

Effect of Salinity and Salmon Pituitary Extract on the Expression of Reproduction and/or Salinity-Related Genes in the Pituitary Cells of Japanese Eel

Seong Hee Mun^{1,2}, † Joon Yeong Kwon¹

¹Department of Aquatic Life Medical Sciences, Sunmoon University, Asan 31460, Korea

²Ecological Risk Research Department, Korea Institute of Ocean Science and Technology, Geoje 53201, Korea



Received: June 29, 2024
Revised: August 8, 2024
Accepted: August 27, 2024

†Corresponding author

Joon Yeong Kwon
Department of Aquatic Life Medical Sciences, Sunmoon University, Asan 31460, Korea.
Tel: +82-41-530-2284
E-mail: jykwon@sunmoon.ac.kr

Copyright © 2024 The Korean Society of Developmental Biology.
This is an Open Access article distributed under the terms of the Creative Commons Attribution Non-Commercial License (<http://creativecommons.org/licenses/by-nc/4.0/>) which permits unrestricted non-commercial use, distribution, and reproduction in any medium, provided the original work is properly cited.

ORCID

Seong Hee Mun
<https://orcid.org/0000-0002-8810-5805>
Joon Yeong Kwon
<https://orcid.org/0000-0001-8485-0878>

Conflict of interests

The authors declare no potential conflict of interest.

Acknowledgements

This research was supported by Basic Science Research Program through the National Research Foundation of Korea (NRF) funded by Ministry of Education (NRF-2020R1A2C1010475).

Authors' contributions

Conceptualization: Kwon JY.
Data curation: Mun SH, Kwon JY.
Formal analysis: Mun SH.
Methodology: Mun SH, Kwon JY.
Software: Mun SH.
Validation: Kwon JY.
Investigation: Mun SH.
Writing-original draft: Mun SH.
Writing-review & editing: Mun SH, Kwon JY.
<https://www.ksdb.org>

Abstract

Artificial sexual maturation of eel (*Anguilla japonica*) involves rearing in seawater and injecting salmon pituitary extract (SPE). The salinity of seawater and components of SPE influence hormonal activities of the eel pituitary, leading to gonad development. This study investigated the direct effects of salinity change and SPE treatment on the eel pituitary gland using primary cell cultures. Pituitary cells were cultured into four experimental groups: control culture (control), SPE-treated culture (SPE), NaCl-treated culture (NaCl) and NaCl+SPE treated culture (NaCl+SPE). We investigated the expression of genes presumably related to reproduction and/or salinity, including luteinizing hormone (*LHβ*), follicle stimulating hormone (*FSHβ*), progesterone receptor-like (*pgrl*), prolactin (*PRL*), dopamine receptor D4 (*drd4*), neuropeptide B/W receptor 2 (*NPBWR2*) and relaxin family peptide receptor 3-2b (*rxfp3-2b*). Gene expression analysis revealed significant upregulation of *LHβ* in SPE and NaCl+SPE groups compared to control and NaCl ($p < 0.05$). *FSHβ* expression did not show any significant changes. *PRL* showed a significant decrease in the NaCl group ($p < 0.05$). *Pgrl*, *NPBWR2*, *drd4*, and *rxfp3-2b* displayed the highest expression in the control group, with downregulation observed in all treatment groups (NaCl, SPE, and NaCl+SPE) ($p < 0.05$). This study demonstrated the direct effects of salinity changes and SPE treatment on the eel pituitary. Results from this study also suggest that salinity change is necessary but work together with SPE to induce reproductive process, and that *LHβ*, *pgrl*, *PRL*, *drd4*, *NPBWR2*, and *rxfp3-2b* genes are obviously associated with reproduction and salinity changes in eels.

Keywords: Eel, Pituitary, Primary cell culture, Sexual maturation, Gene expression

INTRODUCTION

Artificial sexual maturation of eel (*Anguilla japonica*) relies on rearing in seawater and injecting salmon pituitary extract (SPE). Salinity of the seawater and components of the SPE are known to influence hormonal activities of the eel pituitary, the regulatory center for reproduction, consequently resulting in the development of gonad (Kagawa et al., 1998). However, the exact mechanisms by which these external stimuli exert their effects remain unclear. These external stimuli could act either directly

Ethics approval

All fish maintenance and experimental procedures complied with the guidelines approved by the Animal Care and Use Committee of Sunmoon university and were conducted in accordance with established ethical principles for the care and utilization of laboratory animals (SM-2022-09-01).

on the pituitary or indirectly through the hypothalamus with the help of hormonal substances or neurotransmitters.

Direct action of salinity change and SPE treatment on the pituitary can be proved by using the primary culture of pituitary cells. *In vitro* approaches have been successfully used to study gonadotropic hormone (GTH) expression in eel pituitary cells in response to various hormones and factors (Montero et al., 1996; Aroua et al., 2007; Pasquier et al., 2018; Yoon et al., 2023). Furthermore, cell culture technique provides a controlled *in vitro* environment, eliminating the confounding effects of various environmental factors and individual differences often encountered *in vivo* experiments (Ager-Wick et al., 2018).

Among the genes expressed in the pituitary, several genes have been implicated in sexual maturation and/or osmoregulation. GTH genes including luteinizing hormone ($LH\beta$) and follicle stimulating hormone ($FSH\beta$) are definite key genes for reproduction. Progesterone receptor-like (*pgrl*) plays a crucial role in oocyte maturation (Thomas et al., 2002), reflecting the broader influence of progesterone signaling on various female reproductive processes like follicle growth, ovulation, implantation and pregnancy maintenance (Chen et al., 2010). Prolactin (PRL) has been known as a “freshwater adapting hormone” in teleost (Breves et al., 2011), exhibiting diverse activities encompassing hydromineral balance, reproduction, growth and development, etc (Bole-Feysot et al., 1998). Dopamine and its receptors are important regulators of renal natriuresis, which is critical for the adaptation of many animals to changing environmental salinity (Su et al., 2016). Additionally, they exert direct inhibitory control on gonadotropes, counteracting the stimulatory effect of gonadotropin-releasing hormone (GnRH) on gonadotropin release (Dufour et al., 2005). Neuropeptide B/W receptor (NKBWR) is a receptor for Neuropeptide B (NPB) and Neuropeptide W (NPW). Studies in mammals have revealed that NPB/NPW plays a role in regulating various physiological processes, including food intake, energy homeostasis and stress (Mondal et al., 2003; Samson et al., 2004; Levine et al., 2005; Date et al., 2010). Relaxin family peptides and their receptors (*rxfp1*, *rxfp2b*, *rxfp3-2a*, and *rxfp3-2b*) exhibit diverse functions in mammals, including promoting growth, reproduction, and regulating renal and cardiovascular systems (Conrad & Novak, 2004; Sherwood, 2004).

In this study, we investigated the expression of *LH β* , *FSH β* , *pgrl*, *PRL*, dopamine receptor D4 (*drd4*), Neuropeptide B/W receptor 2 (*NPBWR2*) and relaxin family peptide receptor 3-2b (*rxfp3-2b*) genes to prove direct action of salinity change and SPE treatment on the pituitary using the primary culture of eel pituitary cells.

MATERIALS AND METHODS

1. Fish and sampling

Wild female eels (11 fish) were captured with a net in the vicinity of Lake Sapgyo and Lake Asan, Korea and transported to a fish rearing facility in Sunmoon university. Fish were treated with oxytetracycline (DaOne, Seoul, Korea) to prevent any possible bacterial disease transmission and anesthetized using 2-phenoxyethanol (0.5 mL/L freshwater) for subsequent measurements. Body length, body height, body circumference and body weight were recorded for each eel (Table 1). Blood was collected in a 3 mL heparinized syringe and centrifuged (2,000×g, 4°C, 5 min), and the plasma fraction was separated and stored -80°C until analysis. The eels were then dissected to obtain their livers, gonads and pituitaries. Liver weight was used to calculate the hepatosomatic index (HSI), while gonad weight was used for the gonadosomatic index (GSI). Finally, the pituitaries were carefully removed and stored in Hank's Balanced Salt Solution (HBSS; Gibco, Grand Island, NY, USA) for use in cell culture experiments (Fig. 1). All fish maintenance and experimental procedures

Table 1. Morphometric and physiological indices of experimental eels

	Sample
Body length (cm)	64.0±2.6
Body height (cm)	3.4±0.5
Body circumference (cm)	9.5±1.0
Body weight (g)	355.0±82.7
Gonad weight (g)	5.0±2.0
Liver weight (g)	3.2±0.8
GSI	1.4±0.3
HSI	0.9±0.1
No. of sample (n)	11

GSI, gonadosomatic index; HSI, hepatosomatic index.

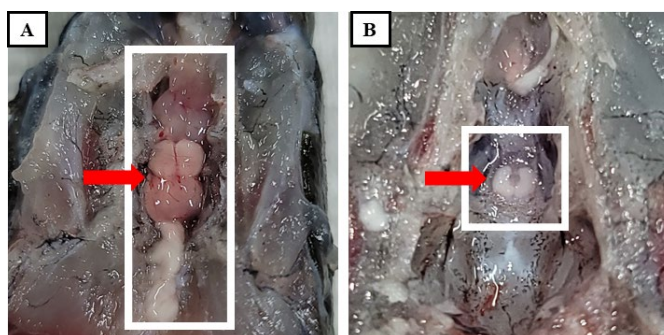


Fig. 1. The pituitary of eel *Anguilla japonica* is found underneath the brain. Arrows indicate the brain (A) and pituitary (B), respectively.

complied with the guidelines approved by the Animal Care and Use Committee of Sunmoon university and were conducted in accordance with established ethical principles for the care and utilization of laboratory animals (SM-2022-09-01).

2. Pituitary cell culture

The primary culture of pituitary cell was performed with reference to Ager-Wick et al. (2018) and Mun et al. (2022). Briefly, the pituitary was removed from eels, washed with HBSS (Gibco) and then minced into small pieces using a razor blade. The chopped pituitaries were treated with 500 μ L of trypsin- ethylenediaminetetraacetic acid (EDTA) solution (Gibco) and incubated at 27°C for 1 h. After incubation, trypsin-EDTA treatment was terminated by adding 50 μ L of fetal bovine serum (FBS; Gibco). The cell suspension was then centrifuged (200 \times g, 4°C, 10 min) to separate the cell pellet from the supernatant, which was discarded. A culture medium containing 89% Leibovitz-15 medium (L-15; Gibco), 10% FBS, and 1% Penicillin-streptomycin (Pen-Strep, Gibco) was prepared, and the pituitary cells were suspended. After thorough pipetting, the number of cells and viability were determined using a hemocytometer and trypan blue, respectively. Poly-L-lysine solution (Sigma-Aldrich, St. Louis, MO, USA) 200 μ L was dispensed into each well of a 24-well plate and evenly coated on the bottom. The coating was performed at room temperature for approximately 2 h. The wells were then washed with sterile distilled water and dried in an incubator at 27°C for about 2 h. Cell suspension (1 mL) in culture medium was then dispensed into each coated well. To monitor cell attachment and stabilization, the cultures were incubated at 27°C for 4 days and observed under an

inverted microscope (CKX53, Olympus, Japan) on days 1, 2, and 4. Subsequently, the cultures were divided into four experimental groups: control culture (control), SPE-treated culture (SPE), NaCl-treated culture (NaCl) and NaCl+SPE treated culture (NaCl+SPE). The culture medium for the NaCl groups (NaCl and NaCl+SPE) were treated with NaCl to reach a final concentration of 20 mM. To prepare the SPE solution for cell culture, 20 mg of SPE was suspended in 2 mL of distilled water. The mixture was then thoroughly homogenized. Following homogenization, the suspension was centrifuged (3,000×g, 4°C, 15 min) to separate the supernatant. Only the resulting supernatant, containing the dissolved SPE, was collected for further use. This supernatant was then mixed with the culture medium for SPE and NaCl+SPE, respectively. The culture medium was replaced with the corresponding treatment for each group and incubated for an additional 6 h at 27°C. Finally, the pituitary cells were collected for total RNA extraction.

3. Measurement of osmolality of plasma and culture medium

Plasma osmolality of eels used to obtain the pituitary was measured using a Vapor Pressure Osmometer (Wescor 5600, Logan, UT, USA). In addition, to ensure keeping different osmolality of the culture medium between treatments during cell culture, the osmolality of the 4-experimental culture media (control, SPE, NaCl, and NaCl+SPE) was also measured at the end of experiment.

4. mRNA expression analysis

Total RNA was isolated from the pituitary cells treated with the different experimental media using Trizol® reagent (Ambion, Austin, TX, USA) according to the manufacturer's instructions. The quantity of the extracted RNA was then determined using a Nanodrop 2000 spectrophotometer (Thermo Scientific, Massachusetts, MA, USA). Subsequently, complementary DNA (cDNA) was synthesized from the purified RNA using TOPscript™RT DryMIX (Enzynomics, Daejeon, Korea). Expression levels of target genes were assessed using quantitative real-time PCR (qRT-PCR) performed on a CFX96 Touch™ Real-Time PCR Detection System (Bio-Rad, Hercules, CA, USA) with Topreal™ qPCR 2X PreMIX SYBR Green (Enzynomics, Daejeon, Korea). For each sample, a 20 µL reaction mixture was prepared to contain 10 µL SYBR Green (Enzynomics), 5 µL cDNA (1:50 dilution) and 3 µL nuclease free water with the appropriate primers. The target genes analyzed were *LHβ*, *FSHβ*, *pgrl*, *PRL*, *drd4*, *NPBWR2*, and *rxfp3-2b* with primer sequences detailed in Table 2. The qRT-PCR reaction program consisted of an initial denaturation step at 95°C for 10 min, followed by 40 cycles of denaturation at 95°C for 15 sec, annealing at 60°C for 30 sec, and extension at 72°C for 30 sec. Transcript levels of target genes were normalized to β-actin expression levels.

5. Statistical analysis

Statistic analyses were performed using the SPSS 18.0 software (Chicago, IL, USA). All data were expressed as means±SE and subjected to one-way analysis of variance (ANOVA) followed by Duncan's test to determine significant difference between treatments ($p < 0.05$).

RESULTS

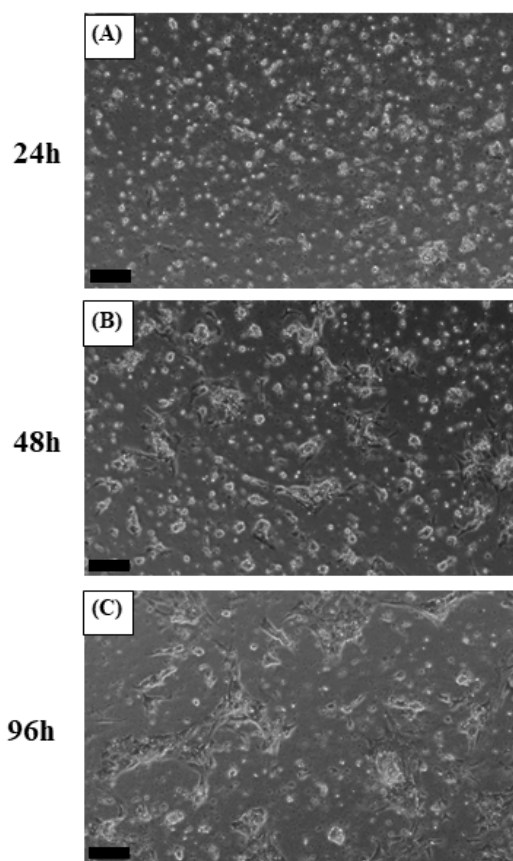
1. Results of pituitary cell culture

The plates were incubated at 27°C for 4 days to allow cell attachment and stabilization. After 24 h, cells were observed to be evenly attached. By 48 h, the cells appeared larger and exhibited a slightly more spread-out morphology. Finally, at 96 h (day 4), cells displayed the largest size and were most extensively attached to the plate, indicating successful stabilization (Fig. 2). Subsequently,

Table 2. Primers used for quantitative real-time PCR (qRT-PCR) for reproduction and/or salinity related genes of eel pituitary cell

Gene		Primer sequence	Product size
<i>β-actin</i>	F	GAGACCTTCAACACCCCAG	95
	R	CCAGAGTCCATCACAATACCAG	
<i>LHβ</i>	F	GATCCCCATGTGACTTTCCC	72
	R	GCAGTCAGACGTGTCCATG	
<i>FSHβ</i>	F	CTCGCCAACATCTCCATCTC	99
	R	AGAATCCTGGGTGAAGCAC	
<i>pgrl</i>	F	GGGTAGTGACAGTGAGATTTGG	116
	R	CAGCCCAAGACAATTTTCGG	
<i>PRL</i>	F	GATCACAAGATTGGCTCCTC	143
	R	TTGTCGATTTTGTGGGAGTC	
<i>drd4</i>	F	CGGATTTGGGACTGTACTTCTG	92
	R	TCGCTTGAGTGATATACGCAC	
<i>NPBWR2</i>	F	AGTTGTATGCCTTCGGTTCC	126
	R	TCAATCCCACGGCACATATG	
<i>rxfp3-2b</i>	F	GTAATCTGTCCGCAACCAAAAAG	102
	R	GACTGACAATAAAGTTCACGGTG	

LHβ, luteinizing hormone; *FSHβ*, follicle stimulating hormone; *pgrl*, progesterone receptor-like; *PRL*, prolactin; *drd4*, dopamine receptor D4; *NPBWR2*, neuropeptide B/W receptor 2; *rxfp3-2b*, relaxin family peptide receptor 3-2b.

**Fig. 2.** Microscopic observation of eel pituitary cell culture. The pituitary cell of eel was cultured for 24 (A), 48 (B) and 96 (C). Scaled bar=100 μm.

the culture medium was replaced in each well-plate to establish the treatment groups. The control group was replaced with a normal culture medium, while the NaCl group with a culture medium containing 20 mM NaCl, the SPE group with a normal culture medium containing SPE and the NaCl+SPE group with a culture medium containing 20 mM NaCl and SPE, respectively. The cells were then further incubated at 27°C for 6 h. Microscopic examination revealed that cells in all four experimental groups displayed a similar spread-out morphology, size, and quantity (Fig. 3). The plasma osmolality of the experimental eels was 305 ± 7.8 mOsm/kg. Osmolality of the culture medium at the end of experiment is control 348 ± 8.1 mOsm/kg, NaCl 384 ± 9.7 mOsm/kg, SPE 308 ± 7.1 mOsm/kg and NaCl+SPE 354 ± 7.6 mOsm/kg.

2. Expression of reproduction and/or salinity-related genes

Expression of reproduction and/or salinity-related genes in the pituitary treated with 4 different culture conditions (control, NaCl, SPE, and NaCl+SPE) were examined. There was no significant difference in the expression level of *LH β* between control and NaCl groups, but significantly higher in the SPE, and NaCl+SPE groups ($p < 0.05$, Fig. 4A). Expression of *FSH β* gene, however, did not significantly differ between treatments although the level in the NaCl+SPE group was higher (Fig. 4B). *Pgr1* gene expression was significantly suppressed in all treatments compared to control group ($p < 0.05$, Fig. 4C). Expression level of prolactin gene, a representative salinity-related gene, was significantly lower in the NaCl group compared to the control and SPE groups ($p < 0.05$, Fig. 5A). We further investigated the expression of several reproduction and salinity related genes (*drd4*, *NPBWR2*, and *rxfp3-2b*) (Fig. 5B, C, and D). Interestingly, the control group displayed significantly higher expression levels of *drd4* and *NPBWR2* compared to the other groups. Expression of *rxfp3-2b* gene was also significantly higher in the control group compared to the SPE group, but not to the NaCl and NaCl+SPE groups.

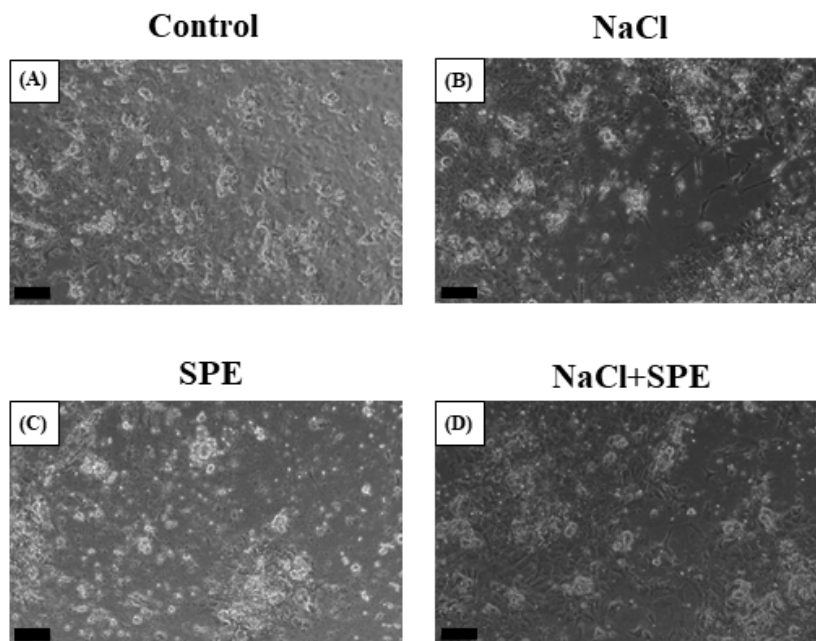


Fig. 3. Microscopic observation of eel pituitary cell culture. The pituitary cell of eel was cultured either in the control (A), NaCl (B), SPE (C) or NaCl+SPE (D) media for 6 hours. Scaled bar=100 μ m. SPE, salmon pituitary extract.

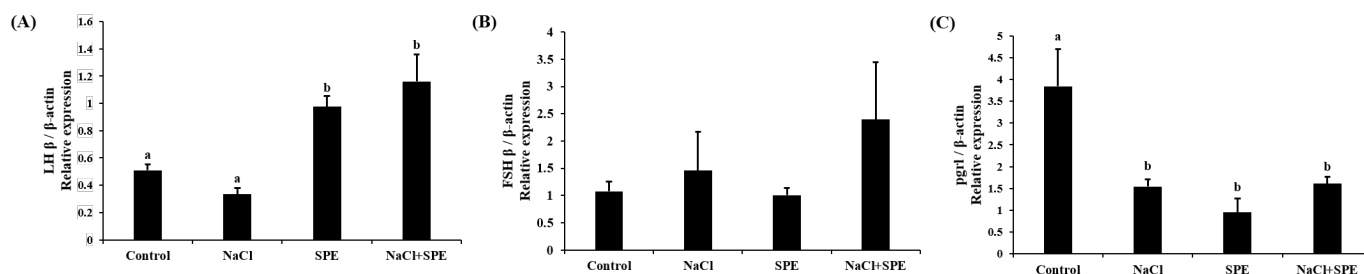


Fig. 4. Expression levels of LH β (A), FSH β (B) and pgrl (C) in the pituitary cells from control, NaCl, SPE, and NaCl+SPE groups. Relative abundance of the mRNA was measured by the comparative threshold cycle method using qRT-PCR and normalized the amount of β -actin mRNA. Results are expressed as means \pm SEM (n=3–4). Different letters above the bars represent significant differences ($p < 0.05$). SPE, salmon pituitary extract; qRT-PCR, quantitative real-time PCR; LH β , luteinizing hormone; FSH β , follicle stimulating hormone; pgrl, progesterone receptor-like.

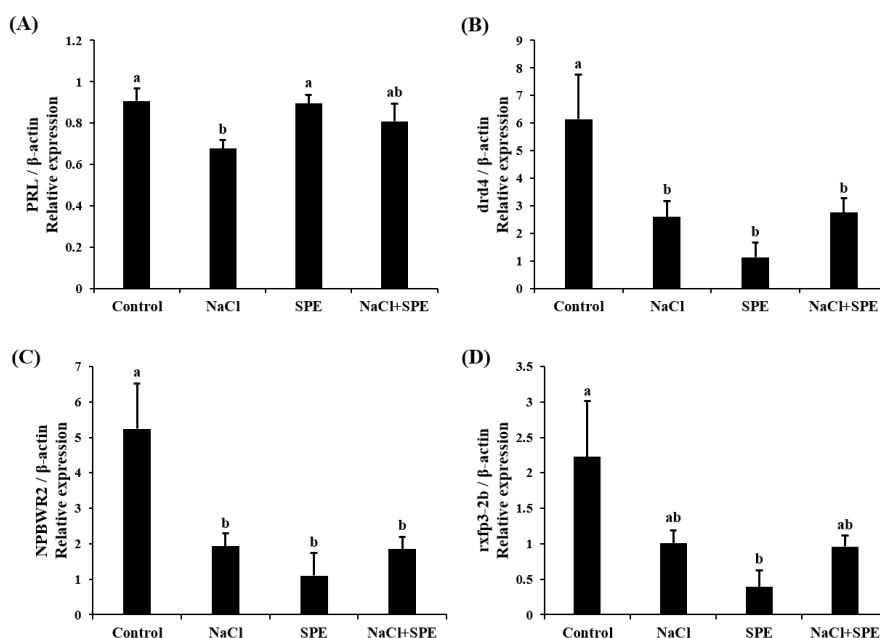


Fig. 5. Expression levels of PRL (A), drd4 (B), NPBWR2 (C) and rxfp3-2b (D) in the pituitary cells from control, NaCl, SPE, and NaCl+SPE groups. Relative abundance of the mRNA was measured by the comparative threshold cycle method using qRT-PCR and normalized the amount of β -actin mRNA. Results are expressed as means \pm SEM (n=3–4). Different letters above the bars represent significant differences ($p < 0.05$). SPE, salmon pituitary extract; qRT-PCR, quantitative real-time PCR; PRL, prolactin; drd4, dopamine receptor D4; NPBWR2, neuropeptide B/W receptor 2; rxfp3-2b, relaxin family peptide receptor 3-2b.

DISCUSSION

In nature, eels are catadromous, migrating from freshwater to seawater for reproduction. Interestingly, seawater rearing seems also necessary in artificially triggering sexual maturity. A study by Kagawa et al. (1998) showed that eels reared in seawater for longer periods required less SPE injections to reach maturity, highlighting seawater's role in enhancing SPE effectiveness. Furthermore, research suggests seawater can trigger early development of egg yolk precursors (vitellogenesis) (Kagawa et al., 1998). Additionally, Sudo et al. (2011) found significantly higher levels of sex steroids in migrating eels compared to freshwater eels, suggesting hormonal changes triggered by seawater exposure.

NaCl treatment to the primary culture of eel pituitary cell altered osmolality of culture medium and increased or decreased the levels of reproduction and/or salinity-related genes in this study, suggesting the direct action of salinity changes on the pituitary cells. Fish exposed to higher salinity showed increased plasma osmolality even after acclimatization to the salinity (Kammerer et al., 2010), indicating the pituitary in the fish could experience higher osmolality and respond to it. Several studies have investigated the effects of osmolality on gene expression in pituitary cells. For example, Fuentes et al. (2010) examined the influence of varying NaCl concentrations in the culture medium on *PRL* and growth hormone (*GH*) gene expression in sea bream (*Sparus auratus*) pituitary cells. A study of pituitary cell cultures treated with NaCl showed that *PRL* release from the pituitary of silver sea bream (*Sparus sarba*) was stimulated by decreased extracellular ion content and osmolality (Kwong et al., 2009).

Freshwater teleost fish typically maintain a blood osmolality range of 250–350 mOsm/kg, while marine teleost fish have a higher range of 350–500 mOsm/kg (Kim et al., 2009). Kim et al. (2008) reported an average plasma osmolality of 311.3 ± 1.5 mOsm/L in the eels (approximately 200 g) acclimated to seawater for 10 days after freshwater rearing. Similarly, Seo et al. (2009) found that eels (approximately 200 g) raised in different salinities for 7 days exhibited the lowest plasma osmolality in freshwater. The plasma osmolality was significantly highest in the seawater group (281–315 mOsm/kg). These studies support that the culture medium used in this study falls within the physiological osmolality range of eels.

The present study proved that the direct action of salinity change on the pituitary. However, salinity change alone seems not strong enough to induce sexual development. Our investigation for *GTH* gene expression revealed that *LH β* mRNA levels were significantly higher in the SPE and NaCl+SPE groups (containing SPE) compared to the control and NaCl groups (without SPE). Increased osmolality by adding NaCl did not strongly affect even with SPE in the case of *FSH β* mRNA expression. These results are similar to those of the Japanese eel artificial sexual maturation *in vivo* experiment and suggest that SPE directly affects pituitary cells, particularly by upregulating *LH β* expression (Saito et al., 2003).

Progesterone play crucial roles in development and reproduction in vertebrates, including teleost. *Pgr1* is known for its role in oocyte maturation (Thomas et al., 2002). However, emerging research suggests its presence and potential function in the fish pituitary gland. Studies have documented *pgr1* expression in zebrafish pituitary (Hanna & Zhu, 2009) and specifically in LH cells of female Nile tilapia (Hollander-Cohen et al., 2021). Intriguingly, this *in vitro* study observed changes in *pgr1* expression, suggesting a potential role for *pgr1* in sexual maturation and reproduction in eel pituitary cells.

Examining prolactin expression, a key indicator of osmolality changes, revealed the lowest levels in the NaCl group. These findings align with the established role of *PRL* as a salinity-responsive hormone in teleost, where expression typically decreases with increasing salinity (Breves et al., 2011; Mohammed-Geba et al., 2017). In this study, the culture medium osmolality of the NaCl-treated group was significantly increased compared to the control group, and the expression of *PRL* in pituitary cells was significantly decreased. Our findings provide further evidence that *PRL* expression is directly influenced by changes in osmolality within the culture medium. *PRL* has been implicated in fish reproductive development and attainment of sexual maturity. For example, *PRL* levels increase alongside gonadotrophins during spawning in the catfish (*Clarius batrachus*) (Singh & Singh, 1981). Similarly, treatment with estradiol-17 β in seabream increased *PRL* mRNA depending on maturity (Cavaco et al., 2003). These findings suggest a potential role of decreased *PRL* in eel sexual maturation. However, further investigation is needed to elucidate the precise relationship between *PRL* and *GTH*, particularly within the context of artificial sexual maturation

in eels, where salinity changes and hormonal manipulations work in concert.

Dopamine is a well-established inhibitor of GnRH and LH action across various vertebrates, including mammals (Thiéry, 1995), amphibians (Sotowska-Brochocka et al., 1994), birds (Contijoch et al., 1992), and teleost (Kah et al., 1987; Vidal et al., 2004; Fontaine et al., 2015). Our study found a decrease in dopamine receptor *drd4* expression across all NaCl, SPE, and NaCl+SPE groups compared to the control. This observation aligns with the established principle that dopamine receptor downregulation leads to increased *GnRH* and *GTH* expression. Kottmann et al. (2020) proposed a complex role for dopamine in eel sexual maturation, suggesting that continuous SPE injection might override the initial inhibitory dopamine response, ultimately leading to sexual development.

NKBWR is a receptor for NPB and NPW, known to regulate food intake, energy homeostasis and stress in mammals (Mondal et al., 2003; Samson et al., 2004; Levine et al., 2005; Date et al., 2010). In chickens, NKBWR2 is highly expressed in the pituitary gland, and NPW can influence the secretion of GH and PRL depending on NKBWR2 levels (Bu et al., 2016). Similarly, NPB has been shown to regulate the secretion of progesterone and estradiol in pigs (Yang et al., 2018). Our *in vitro* study using NaCl and SPE treatments revealed changes in *NKBWR2* expression, suggesting its potential involvement in both osmoregulation and reproductive processes in the eel. This finding warrants further investigation to elucidate the precise role of NKBWR2 in these physiological systems.

Relaxin 3, relaxin family peptide, has shown promise in osmoregulation. Studies in rats demonstrated that intraventricular Relaxin 3 injection stimulated water drinking and LH secretion, suggesting a potential link between nutritional status, reproduction, and osmotic balance (McGowan et al., 2008; Otsubo et al., 2010). In fish, the relaxin family (*rxfp1*, *rxfp2b*, *rxfp3-2a*, and *rxfp3-2b*) appears to be involved in osmoregulation. Three-spined stickleback (*Gasterosteus aculeatus*) studies revealed differential regulation of relaxin family peptide receptor by salinity signals, suggesting their role in this process (Kusakabe et al., 2014). However, research on the relaxin family in eels has yielded mixed results. While Hu et al. (2011) identified the relaxin family in the eel brain, expression levels did not significantly change with seawater acclimation. This discrepancy may be a difference between *in vivo* and *in vitro*. In this study, employing *in vitro* eel pituitary cell culture, we observed a decrease in *rxfp3-2b* expression upon treatment with NaCl and SPE. These findings suggest a potential role for *rxfp3-2b* in osmoregulation or reproduction-related processes in eel pituitary cells.

Altogether, in this study, we have experimentally proved that the direct action of salinity change and SPE on the pituitary of eels. Results from this study also suggest that salinity change is necessary but work together with SPE to induce reproductive process, and that *LHβ*, *pgr1*, *PRL*, *drd4*, *NPBWR2*, and *rxfp3-2b* genes are obviously associated with reproduction and salinity changes in eels. Further studies are required to understand the possible concurrent operation of osmoregulatory and sexual maturation pathways in this species.

REFERENCES

- Ager-Wick E, Hodne K, Fontaine R, von Krogh K, Haug TM, Weltzien FA (2018) Preparation of a high-quality primary cell culture from fish pituitaries. *J Vis Exp* e58159.
- Aroua S, Weltzien FA, Le Belle N, Dufour S (2007) Development of real-time RT-PCR assays for eel gonadotropins and their application to the comparison of *in vivo* and *in vitro* effects of sex steroids. *Gen Comp Endocrinol* 153:333-343.
- Bole-Feysot C, Goffin V, Ederly M, Binart N, Kelly PA (1998) Prolactin (PRL) and its receptor:

- Actions, signal transduction pathways and phenotypes observed in PRL receptor knockout mice. *Endocr Rev* 19:225-268.
- Breves JP, Seale AP, Helms RE, Tipsmark CK, Hirano T, Grau EG (2011) Dynamic gene expression of GH/PRL-family hormone receptors in gill and kidney during freshwater-acclimation of Mozambique tilapia. *Comp Biochem Physiol A Mol Integr Physiol* 158:194-200.
- Bu G, Lin D, Cui L, Huang L, Lv C, Huang S, Wan Y, Fang C, Li J, Wang Y (2016) Characterization of neuropeptide B (NPB), neuropeptide W (NPW), and their receptors in chickens: Evidence for NPW being a novel inhibitor of pituitary GH and prolactin secretion. *Endocrinology* 157:3562-3576.
- Cavaco JEB, Santos CRA, Ingleton PM, Canario AVM, Power DM (2003) Quantification of prolactin (PRL) and PRL receptor messenger RNA in gilthead seabream (*Sparus aurata*) after treatment with estradiol-17 β . *Biol Reprod* 68:588-594.
- Chen SX, Bogerd J, García-López Á, de Jonge H, de Waal PP, Hong WS, Schulz RW (2010) Molecular cloning and functional characterization of a zebrafish nuclear progesterone receptor. *Biol Reprod* 82:171-181.
- Conrad KP, Novak J (2004) Emerging role of relaxin in renal and cardiovascular function. *Am J Physiol Regul Integr Comp Physiol* 287:R250-R261.
- Contijoch AM, Gonzalez C, Singh HN, Malamed S, Troncoso S, Advis JP (1992) Dopaminergic regulation of luteinizing hormone-releasing hormone release at the median eminence level: Immunocytochemical and physiological evidence in hens. *Neuroendocrinology* 55:290-300.
- Date Y, Mondal MS, Kageyama H, Ghamari-Langroudi M, Takenoya F, Yamaguchi H, Shimomura Y, Mori M, Murakami N, Shioda S, Cone RD, Nakazato M (2010) Neuropeptide W: An anorectic peptide regulated by leptin and metabolic state. *Endocrinology* 151:2200-2210.
- Dufour S, Weltzien FA, Sebert ME, Le Belle N, Vidal B, Vernier P, Pasqualini C (2005) Dopaminergic inhibition of reproduction in teleost fishes: Ecophysiological and evolutionary implications. *Ann NY Acad Sci* 1040:9-21.
- Fontaine R, Affaticati P, Bureau C, Colin I, Demarque M, Dufour S, Vernier P, Yamamoto K, Pasqualini C (2015) Dopaminergic neurons controlling anterior pituitary functions: Anatomy and ontogenesis in zebrafish. *Endocrinology* 156:2934-2948.
- Fuentes J, Brinca L, Guerreiro PM, Power DM (2010) PRL and GH synthesis and release from the sea bream (*Sparus auratus* L.) pituitary gland *in vitro* in response to osmotic challenge. *Gen Comp Endocrinol* 168:95-102.
- Hanna RN, Zhu Y (2009) Expression of membrane progesterin receptors in zebrafish (*Danio rerio*) oocytes, testis and pituitary. *Gen Comp Endocrinol* 161:153-157.
- Hollander-Cohen L, Golan M, Levavi-Sivan B (2021) Differential regulation of gonadotropins as revealed by transcriptomes of distinct LH and FSH cells of fish pituitary. *Int J Mol Sci* 22:6478.
- Hu GB, Kusakabe M, Takei Y (2011) Localization of diversified relaxin gene transcripts in the brain of eels. *Gen Comp Endocrinol* 172:430-439.
- Kagawa H, Iinuma N, Tanaka H, Ohta H, Okuzawa K (1998) Effects of rearing period in seawater on induced maturation in female Japanese eel *Anguilla japonica*. *Fish Sci* 64:77-82.
- Kah O, Dulka JG, Dubourg P, Thibault J, Peter RE (1987) Neuroanatomical substrate for the inhibition of gonadotrophin secretion in goldfish: Existence of a dopaminergic preoptico-hypophyseal pathway. *Neuroendocrinology* 45:451-458.
- Kammerer BD, Cech JJ Jr, Kültz D (2010) Rapid changes in plasma cortisol, osmolality, and

- respiration in response to salinity stress in tilapia (*Oreochromis mossambicus*). *Comp Biochem Physiol A Mol Integr Physiol* 157:260-265.
- Kim YS, Do YH, Min BH, Lim HK, Lee BK, Chang YJ (2009) Physiological responses of starry flounder *Platichthys stellatus* during freshwater acclimation with different speeds in salinity change. *J Aquac* 22:28-33.
- Kim YK, Ideuchi H, Watanabe S, Park SI, Huh M, Kaneko T (2008) Rectal water absorption in seawater-adapted Japanese eel *Anguilla japonica*. *Comp Biochem Physiol A Mol Integr Physiol* 151:533-541.
- Kottmann JS, Jørgensen MGP, Bertolini F, Loh A, Tomkiewicz J (2020) Differential impacts of carp and salmon pituitary extracts on induced oogenesis, egg quality, molecular ontogeny and embryonic developmental competence in European eel. *PLOS ONE* 15:e0235617.
- Kusakabe M, Ishikawa A, Kitano J (2014) Relaxin-related gene expression differs between anadromous and stream-resident stickleback (*Gasterosteus aculeatus*) following seawater transfer. *Gen Comp Endocrinol* 205:197-206.
- Kwong AKY, Ng AHY, Leung LY, Man AKY, Woo NYS (2009) Effect of extracellular osmolality and ionic levels on pituitary prolactin release in euryhaline silver sea bream (*Sparus sarba*). *Gen Comp Endocrinol* 160:67-75.
- Levine AS, Winsky-Sommerer R, Huitron-Resendiz S, Grace MK, de Lecea L (2005) Injection of neuropeptide W into paraventricular nucleus of hypothalamus increases food intake. *Am J Physiol Regul Integr Comp Physiol* 288:R1727-R1732.
- McGowan BM, Stanley SA, Donovan J, Thompson EL, Patterson M, Semjonous NM, Gardiner JV, Murphy KG, Ghatei MA, Bloom SR (2008) Relaxin-3 stimulates the hypothalamic-pituitary-gonadal axis. *Am J Physiol Endocrinol Metab* 295:E278-E286.
- Mohammed-Geba K, González AA, Suárez RA, Galal-Khallaf A, Martos-Sitcha JA, Ibrahim HM, Martínez-Rodríguez G, Mancera JM (2017) Molecular performance of Prl and Gh/Igf1 axis in the Mediterranean meager, *Argyrosomus regius*, acclimated to different rearing salinities. *Fish Physiol Biochem* 43:203-216.
- Mondal MS, Yamaguchi H, Date Y, Shimbara T, Toshinai K, Shimomura Y, Mori M, Nakazato M (2003) A role for neuropeptide W in the regulation of feeding behavior. *Endocrinology* 144:4729-4733.
- Montero M, Le Belle N, Vidal B, Dufour S (1996) Primary cultures of dispersed pituitary cells from estradiol-pretreated female silver eels (*Anguilla anguilla* L.): Immunocytochemical characterization of gonadotropic cells and stimulation of gonadotropin release. *Gen Comp Endocrinol* 104:103-115.
- Mun SH, Oh HJ, Kwon JY (2022) Response of pituitary cells and tissues to neurokinin B and F in the Nile tilapia. *Dev Reprod* 26:13-21.
- Otsubo H, Onaka T, Suzuki H, Katoh A, Ohbuchi T, Todoroki M, Kobayashi M, Fujihara H, Yokoyama T, Matsumoto T, Ueta Y (2010) Centrally administered relaxin-3 induces Fos expression in the osmosensitive areas in rat brain and facilitates water intake. *Peptides* 31:1124-1130.
- Pasquier J, Lafont AG, Denis F, Lefranc B, Dubessy C, Moreno-Herrera A, Vaudry H, Leprince J, Dufour S, Rousseau K (2018) Eel kisspeptins: Identification, functional activity, and inhibition on both pituitary LH and GnRH receptor expression. *Front Endocrinol* 8:353.
- Saito K, Lokman PM, Young G, Ozaki Y, Matsubara H, Okumura H, Kazeto Y, Yoshiura Y, Aida K, Adachi S, Yamauchi K (2003) Follicle stimulating hormone β , luteinizing hormone β and glycoprotein hormone α subunit mRNA levels in artificially maturing Japanese eel *Anguilla japonica* and naturally maturing New Zealand longfinned eel *Anguilla dieffenbachii*. *Fish Sci*

- 69:146-153.
- Samson WK, Baker JR, Samson CK, Samson HW, Taylor MM (2004) Central neuropeptide B administration activates stress hormone secretion and stimulates feeding in male rats. *J Neuroendocr* 16:842-849.
- Seo MY, Lee KM, Kaneko T (2009) Morphological changes in gill mitochondria-rich cells in cultured Japanese eel *Anguilla japonica* acclimated to a wide range of environmental salinity. *Fish Sci* 75:1147-1156.
- Sherwood OD (2004) Relaxin's physiological roles and other diverse actions. *Endocr Rev* 25:205-234.
- Singh SP, Singh TP (1981) Prolactin level in relation to gonadotrophin concentration during different phases of annual reproductive cycle in the freshwater catfish, *Clarias batrachus* (Linn.). *Ann Endocrinol* 42:159-168.
- Sotowska-Brochocka J, Martyńska L, Licht P (1994) Dopaminergic inhibition of gonadotropic release in hibernating frogs, *Rana temporaria*. *Gen Comp Endocrinol* 93:192-196.
- Su M, Mu X, Gui L, Zhang P, Zhou J, Ma J, Zhang J (2016) Dopamine regulates renal osmoregulation during hyposaline stress via DRD1 in the spotted scat (*Scatophagus argus*). *Sci Rep* 6:37535.
- Sudo R, Suetake H, Suzuki Y, Utoh T, Tanaka S, Aoyama J, Tsukamoto K (2011) Dynamics of reproductive hormones during downstream migration in females of the Japanese eel, *Anguilla japonica*. *Zool Sci* 28:180-188.
- Thiéry JC, Gayraud V, Le Corre S, Viguié C, Martin GB, Chemineau P, Malpoux B (1995) Dopaminergic control of LH secretion by the A15 nucleus in anoestrous ewes. *J Reprod Fertil Suppl* 49:285-296.
- Thomas P, Zhu Y, Pace M (2002) Progesterin membrane receptors involved in the meiotic maturation of teleost oocytes: A review with some new findings. *Steroids* 67:511-517.
- Yang S, Ma Z, Suo C, Cheng L, Su J, Lei Z (2018) Cloning and mRNA expression of NPB and its effect on hormone secretion of the reproductive cells in the pig. *Gen Comp Endocrinol* 261:97-103.
- Yoon JH, Ha JE, Kim DW, Park BR, Min JH, Mun SH, Kwon JY (2023) Effects of progesterone (P4), 17 β -estradiol (E2), melatonin and serotonin (5-HT) on the mRNA expression of reproduction-related genes in the pituitary cells of eels (*Anguilla japonica*). *J Mar Life Sci* 8:32-42.
- Vidal B, Pasqualini C, Le Belle N, Holland MCH, Sbaihi M, Vernier P, Zohar Y, Dufour S (2004) Dopamine inhibits luteinizing hormone synthesis and release in the juvenile European eel: A neuroendocrine lock for the onset of puberty. *Biol Reprod* 71:1491-1500.