

Review Article

Meta-analysis and trial sequential analysis of pancreatic stump closure using a hand-sewn or stapler technique in distal pancreatectomy

Shahin Hajibandeh^{1,*}, Shahab Hajibandeh^{2,*}, Mohammed Abdallah Hablus^{1,3}, Hassaan Bari¹, Adithya Malolan Pathanki¹, Majid Ali¹, Jawad Ahmad¹, Gabriele Marangoni¹, Saboor Khan¹, For Tai Lam¹

¹Department of Hepatobiliary and Pancreatic Surgery, University Hospital Coventry & Warwickshire, Coventry, UK,

²Department of Hepatobiliary and Pancreatic Surgery, University Hospital of Wales, Cardiff, UK,

³Department of General Surgery, Faculty of Medicine, Tanta University, Tanta, Egypt

This study aimed to compare outcomes of hand-sewn and stapler closure techniques of pancreatic stump in patients undergoing distal pancreatectomy (DP). Impact of stapler closure reinforcement using mesh on outcomes was also evaluated. Literature search was carried out using multiple data sources to identify studies that compared hand-sewn and stapler closure techniques in management of pancreatic stump following DP. Odds ratio (OR) was determined for clinically relevant postoperative pancreatic fistula (POPF) via random-effects modelling. Subsequently, trial sequential analysis was performed. Thirty-two studies with a total of 4,022 patients undergoing DP with hand-sewn ($n = 1,184$) or stapler ($n = 2,838$) closure technique of pancreatic stump were analyzed. Hand-sewn closure significantly increased the risk of clinically relevant POPF compared to stapler closure (OR: 1.56, $p = 0.02$). When stapler closure was considered, staple line reinforcement significantly reduced formation of such POPF (OR: 0.54, $p = 0.002$). When only randomized controlled trials were considered, there was no significant difference in clinically relevant POPF between hand-sewn and stapler closure techniques (OR: 1.20, $p = 0.64$) or between reinforced and standard stapler closure techniques (OR: 0.50, $p = 0.08$). When observational studies were considered, hand-sewn closure was associated with a significantly higher rate of clinically relevant POPF compared to stapler closure (OR: 1.59, $p = 0.03$). Moreover, when stapler closure was considered, staple line reinforcement significantly reduced formation of such POPF (OR: 0.55, $p = 0.02$). Trial sequential analysis detected risk of type 2 error. In conclusion, reinforced stapler closure in DP may reduce risk of clinically relevant POPF compared to hand-sewn closure or stapler closure without reinforcement. Future randomized research is needed to provide stronger evidence.

Key Words: Pancreatic stump; Stapler closure; Hand-sewn closure; Distal pancreatectomy

INTRODUCTION


Distal pancreatectomy (DP) involves a surgical resection of distal pancreas due to malignant or benign lesions located to the left of superior mesenteric vessels [1]. Depending on the nature and anatomical features of the pancreatic lesion, DP can be carried out with or without splenic preservation. The former is usually required for malignant or large-sized lesions while the latter might be carried out for small-sized benign lesions to reduce procedure-related morbidities [2].

Despite advancement of surgical techniques including minimally invasive approaches in DP and more recent compliance to enhanced recovery principles, overall postoperative morbidity after DP remains high, most commonly due to occurrence of

Received: January 17, 2024, **Revised:** February 20, 2024,
Accepted: February 20, 2024, **Published online:** March 25, 2024

Corresponding author: Shahin Hajibandeh, FRCS
Department of Hepatobiliary and Pancreatic Surgery, University Hospital
Coventry & Warwickshire, Coventry CV2 2DX, UK
Tel: +44-7766656058, E-mail: shahin_hajibandeh@yahoo.com
ORCID: <https://orcid.org/0000-0001-6159-1068>

*These authors contributed equally to this study.

 Copyright © The Korean Association of Hepato-Biliary-Pancreatic Surgery
This is an Open Access article distributed under the terms of the Creative Commons Attribution Non-Commercial License (<http://creativecommons.org/licenses/by-nc/4.0>) which permits unrestricted non-commercial use, distribution, and reproduction in any medium, provided the original work is properly cited.

pancreatic stump leak. This can subsequently result in postoperative pancreatic fistula (POPF) [3]. The International Study Group on Pancreatic Fistula (ISGPF) defines POPF grades B and C [4,5] as clinically relevant fistula which complicate between 15% and 26% of DPs [6,7]. Clinically relevant POPF has been demonstrated to be predictive of serious haemorrhagic and infective complications which can significantly prolong length of hospital stay and increase cost [8-10].

Controversies exist regarding the best strategy for closure of pancreatic stump in DP. Several techniques have been introduced to decrease the risk of POPF following DP, including linear stapler closure, hand-sewn suture closure, reinforced stapler closures, use of ultrasonic dissection devices, independent main pancreatic duct ligation, pancreatico-enteric anastomosis, sealing by fibrin glue, use of mesh, seromuscular patch, use of falciform ligament or omental plug, and different combinations of the aforementioned techniques [11]. Nevertheless, most comparisons have been evaluated by small number of rather low-level evidence research. Moreover, available evidence syntheses via meta-analyses are either non-specific with inclusions of several comparisons or lack outcome syntheses with respect to clinically relevant POPF. We believe each comparison in this context deserves an independent evidence synthesis with the main focus on clinically relevant POPF to demonstrate the real advantage of one approach over the other with respect to the best available evidence.

The objective of the current study was to carry out a comprehensive meta-analysis of all existing comparative studies to evaluate the risk of clinically relevant POPF associated with two commonly performed approaches (hand-sewn and stapler closure of pancreatic stump) in patients undergoing DP. This study aimed to investigate the impact of stapler line reinforcement on development of clinically relevant POPF. This study also aimed to conduct a trial sequential analysis to assess whether findings of the conducted meta-analysis of randomized controlled trials (RCTs) (level 1a evidence) were conclusive following evaluation of risk of type 1 or 2 errors.

MATERIALS AND METHODS

Study design and eligibility criteria

Our methodology is outlined in a review protocol. The methodology of this study followed Standards of Preferred Reporting Items for Systematic Reviews and Meta-Analyses (PRISMA) statement [12]. All existing randomized and observational studies that compared hand-sewn closure technique and stapler closure technique for the management of pancreatic stump in patients undergoing DP were considered. Single-arm studies, expert opinions, letters to editors, case reports, and case series were not considered.

Population of interest

All male or female adult patients (age more than 18 years)

who underwent DP for benign, premalignant, or malignant lesions of pancreas were included.

Intervention and comparison of interest

In this study, two comparisons were evaluated: 1) Hand-sewn closure versus stapler closure: Interested intervention was hand-sewn pancreatic stump closure with any suture types. It was compared with stapler closure of pancreatic stump using any types of stapler device. 2) Reinforced stapler closure versus standard stapler closure. The interested intervention was reinforced stapler closure with use of polyglycolic acid (PGA) mesh. It was compared with standard stapler closure of pancreatic stump without any reinforcement.

Outcomes

The primary outcome was POPF grades B and C according to the definition of ISGPF [4,5]. Because a POPF grade A is an asymptomatic biochemical leakage without clinical relevance [5], it was not considered as a complication.

Literature search strategy

A strategy for literature search was formulated and run via MEDLINE, CENTRAL, CINAHL, EMBASE, and Web of Sciences (Appendix 1). Moreover, an independent evaluation of reference lists of identified studies or reviews was carried out by two independent authors. The most recent literature search was performed on December 18th, 2023.

Study selection

An independent evaluation of identified articles was performed by two reviewers. When required, their full-texts were accessed and carefully investigated against our inclusion and exclusion criteria. Studies deemed eligible were selected for inclusion. Discrepancies during this stage were addressed via

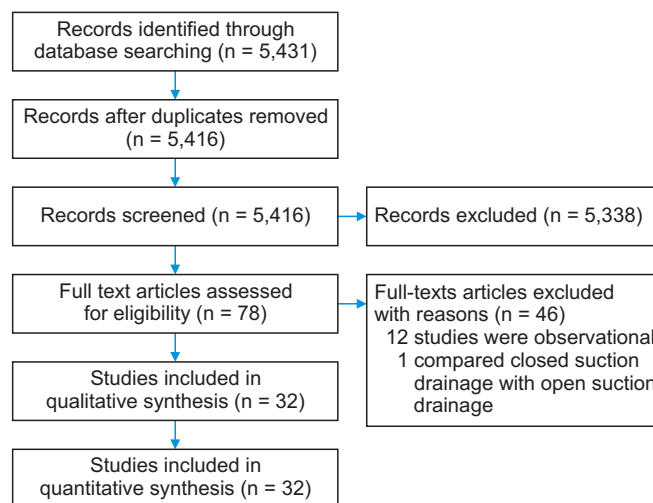


Fig. 1. Study flow diagram.

Table 1. Included studies and related data

Author	Year	Country	Journal	Study design	Comparison
Bassi et al. [15]	1999	Italy	<i>HPB</i>	RCT	Hand-sewn closure vs. Stapler closure
Bilimoria et al. [22]	2003	USA	<i>Br J Surg</i>	Retrospective observational study	Hand-sewn closure vs. Stapler closure, Reinforced stapler closure vs. Standard stapler closure
Balzano et al. [25]	2005	Italy	<i>J Gastrointest Surg</i>	Retrospective observational study	Reinforced stapler closure vs. Standard stapler closure
Goh et al. [23]	2008	Singapore	<i>Arch Surg</i>	Retrospective observational study	Hand-sewn closure vs. Stapler closure, Reinforced stapler closure vs. Standard stapler closure
Ferrone et al. [24]	2008	USA	<i>J Gastrointest Surg</i>	Retrospective observational study	Hand-sewn closure vs. Stapler closure
Finan et al. [26]	2009	USA	<i>Am Surg</i>	Retrospective observational study	Hand-sewn closure vs. Stapler closure Reinforced stapler closure vs. Standard stapler closure
Nathan et al. [28]	2009	USA	<i>Ann Surg</i>	Retrospective observational study	Reinforced stapler closure vs. Standard stapler closure
Harris et al. [27]	2010	USA	<i>J Gastrointest Surg</i>	Retrospective observational study	Reinforced stapler closure vs. Standard stapler closure
Frozanpor et al. [37]	2010	Sweden	<i>JOP</i>	Retrospective observational study	Hand-sewn closure vs. Stapler closure
Kah Heng et al. [39]	2010	Singapore	<i>ANZ J Surg</i>	Retrospective observational study	Hand-sewn closure vs. Stapler closure
Yoshioka et al. [44]	2010	Japan	<i>World J Surg</i>	Retrospective observational study	Hand-sewn closure vs. Stapler closure
Ochia et al. [33]	2010	Japan	<i>J Gastrointest Surg</i>	Retrospective observational study	Reinforced stapler closure vs. Standard stapler closure
Diener et al. [16]	2011	Germany	<i>Lancet</i>	RCT	Hand-sewn closure vs. Stapler closure
Eguchi et al. [36]	2011	Japan	<i>Dig Surg</i>	Retrospective observational study	Hand-sewn closure vs. Stapler closure
Hamilton et al. [17]	2012	USA	<i>Ann Surg</i>	RCT	Reinforced stapler closure vs. Standard stapler closure
Ban et al. [45]	2012	Japan	<i>World J Surg</i>	Retrospective observational study	Hand-sewn closure vs. Stapler closure
Sepesi et al. [31]	2012	USA	<i>J Gastrointest Surg</i>	Retrospective observational study	Hand-sewn closure vs. Stapler closure
Wellner et al. [29]	2012	Germany	<i>World J Gastrointest Surg</i>	Retrospective observational study	Hand-sewn closure vs. Stapler closure
Kawai et al. [38]	2013	Japan	<i>Am J Surg</i>	Retrospective observational study	Hand-sewn closure vs. Stapler closure
Ceppa et al. [30]	2015	USA	<i>J Gastrointest Surg</i>	Retrospective observational study	Hand-sewn closure vs. Stapler closure
Jang et al. [18]	2017	South Korea	<i>JAMA Surg</i>	RCT	Reinforced stapler closure vs. Standard stapler closure
Futagawa et al. [43]	2017	Japan	<i>Anticancer Res</i>	Retrospective observational study	Hand-sewn closure vs. Stapler closure
Tieftrunk et al. [46]	2018	Germany	<i>PLoS One</i>	Retrospective observational study	Hand-sewn closure vs. Stapler closure
Hayashibe and Ogino [32]	2018	Japan	<i>Asian J Surg</i>	Retrospective observational study	Reinforced stapler closure vs. Standard stapler closure
Kondo et al. [19]	2019	Japan	<i>Ann Surg Oncol</i>	RCT	Reinforced stapler closure vs. Standard stapler closure
Kawaida et al. [34]	2019	Japan	<i>Anticancer Res</i>	Retrospective observational study	Reinforced stapler closure vs. Standard stapler closure
Chikhladze et al. [42]	2020	Germany	<i>Asian J Surg</i>	Retrospective observational study	Hand-sewn closure vs. Stapler closure
Wennerblom et al. [20]	2021	Sweden	<i>Br J Surg</i>	RCT	Reinforced stapler closure vs. Standard stapler closure
Merdrignac et al. [21]	2022	France	<i>Ann Surg</i>	RCT	Reinforced stapler closure vs. Standard stapler closure
Tian et al. [35]	2022	China	<i>Front Oncol</i>	Retrospective observational study	Reinforced stapler closure vs. Standard stapler closure
Palmeri et al. [41]	2023	Italy	<i>Int J Med Robot</i>	Retrospective observational study	Hand-sewn closure vs. Stapler closure
Murata et al. [40]	2023	Japan	<i>Surg Laparosc Endosc Percutan Tech</i>	Retrospective observational study	Hand-sewn closure vs. Stapler closure

RCT, randomized controlled trial.

detailed discussion among assessors. If such disagreements remained unresolved, an independent assessor was involved.

Extraction and management of data

A spreadsheet for data extraction was developed. Information about included studies and outcome measures were collected from all eligible studies by two assessors. Disagreements during this stage were also addressed by consultation with an independent assessor.

Evaluation of risk of bias

An independent assessment of the methodology and risk of bias of our eligible studies were performed by two assessors upon criteria outlined by the Cochrane’s tool [13] for RCTs and the Risk Of Bias In Non-randomized Studies of Interventions (ROBINS-I) assessment tool [14] for observational studies. Disagreements following such assessments were addressed via discussion between the assessors. If disagreements persisted, an additional author was involved.

Summary measures and synthesis

Considering that POPF is a dichotomous outcome measure, odds ratio (OR) was calculated as the estimate of effect size. In the comparison of hand-sewn versus stapler closure, the OR was the odds of POPF associated with hand-sewn technique

compared to the stapler technique. An OR < 1 would favour the hand-sewn group. In the comparison of reinforced stapler closure versus standard stapler closure, the OR was the odds of POPF associated with the reinforced stapler compared to the standard stapler. An OR < 1 would favour the reinforced group.

Review Manager 5.4 software [13] was utilised for analyses which involved the use of random-effects modelling. Results of data synthesis for POPF are presented in a forest plot demonstrating 95% confidence intervals (CIs).

We evaluated heterogeneity by calculating I^2 using the Cochran Q test (χ^2). Heterogeneity was subsequently interpreted as follows: $I^2 = 0\%–25\%$, mild heterogeneity; $I^2 = 26\%–75\%$, moderate heterogeneity; and $I^2 = 76\%–100\%$, considerable heterogeneity. Funnel plots were also constructed to investigate publication bias.

We conducted sub-group analysis with respect to randomized and non-randomized studies. To identify contributing factors to heterogeneity, sensitivity analyses were performed. Individual effect of each RCT on outcomes was evaluated using a leave-one-out sensitivity analysis (repeating of outcome synthesis after exclusion of one study at a time).

Trial sequential analysis

We conducted a trial sequential analysis for any outcome measure investigated by at least 5 RCTs via the trial sequential

A Randomized controlled trials

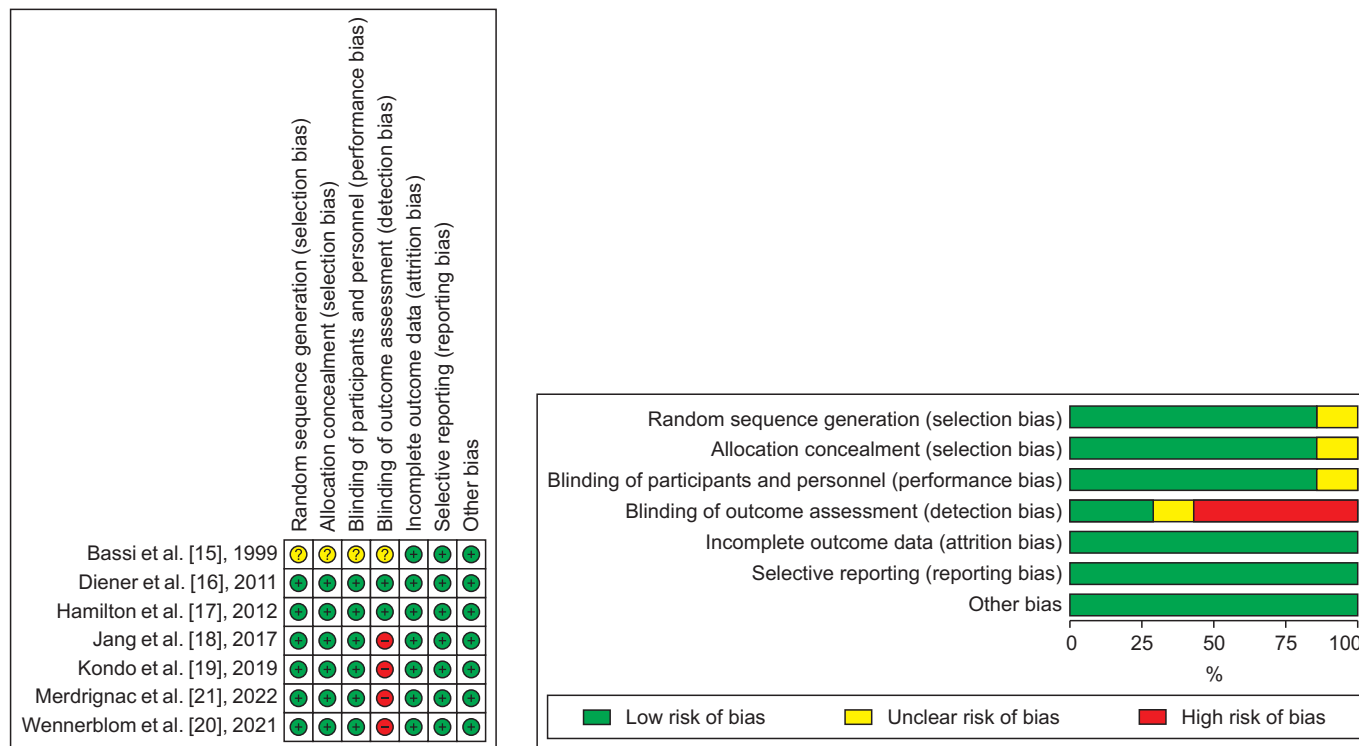


Fig. 2. Risk of bias summary and graph showing authors’ judgments about each risk of bias item for (A) randomized controlled trials, and (B) observational studies.

analysis software 0.9.5.5 Beta (Copenhagen Trial Unit). Using O'Brien-Fleming α -spending function, thresholds for Z-values were adjusted to allow the risk of type I error to be restored to the desired maximum risk. A statistical significance would be achieved if O'Brien-Fleming α -spending boundaries were crossed by a Z-curve. Furthermore, Z values were penalised based on the strength of the available evidence and the number of repeated significance tests. We controlled type 2 error risk using the β -spending function and futility boundaries. Crossing futility boundaries by a Z-curve would suggest that the two approaches did not differ more than the anticipated interven-

tion effect. We considered power of 80% to estimate the information size.

Summary table of findings

A table was made to compile and summarise existing evidence on associated risk of POPF in hand-sewn versus stapler closure of pancreatic stump and reinforced versus standard stapler groups. POPF was deemed the most important outcome parameter necessary for making a decision on inclusion in the summary table of findings. In line with standards highlighted in the system created by the Grading of Recommendation,

B Observational studies

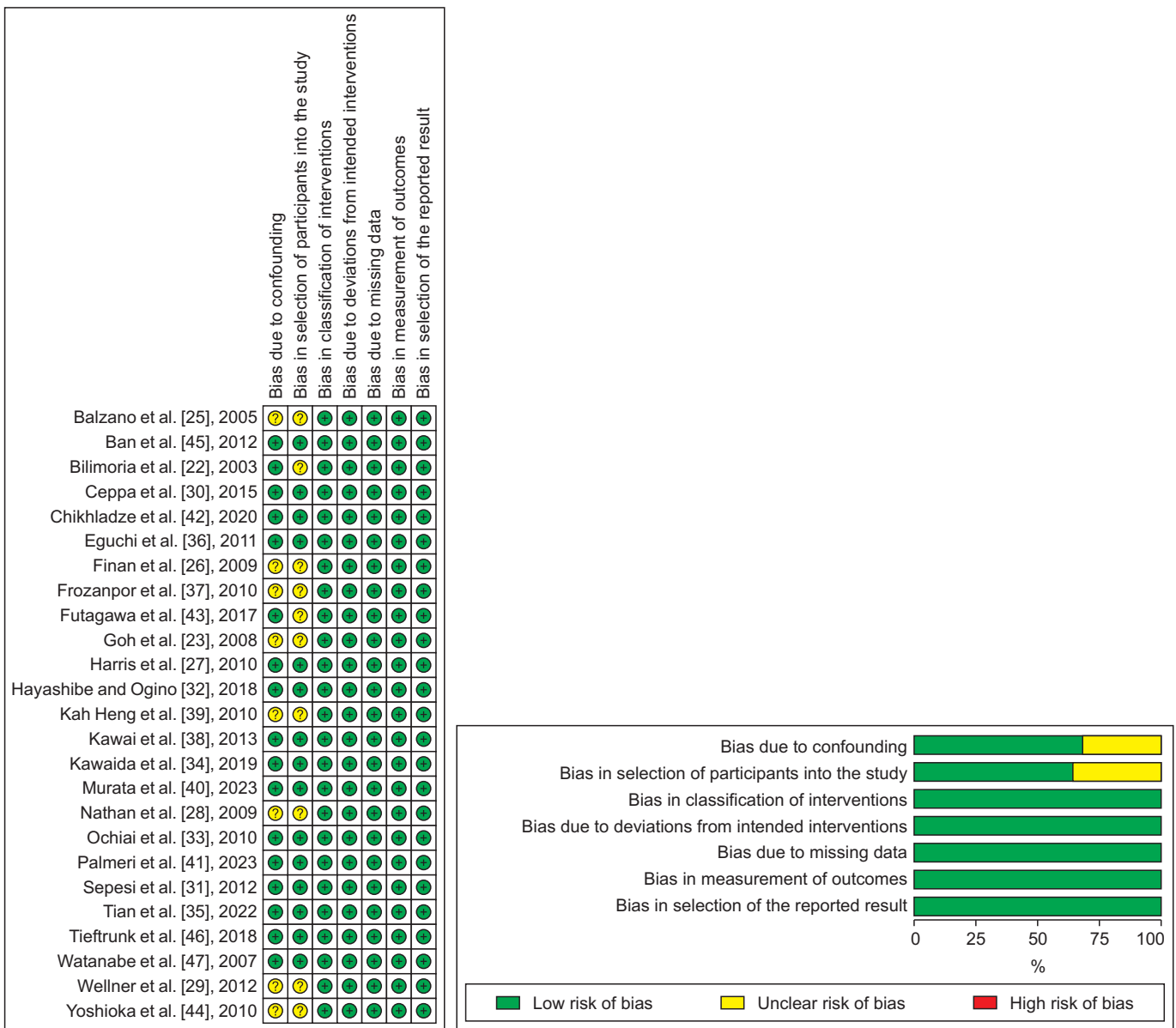


Fig. 2. Continued.

Assessment, Development and Evaluation Working Group (GRADE Working Group), we graded the quality of evidence as high, moderate, low, and very low (Supplementary Table 1).

RESULTS

A total of 5,431 articles were detected following literature search, of which 78 studies were short-listed for further assessment. Another 46 articles were excluded as 24 did not have any comparison group, 9 used other approaches for reinforcement, 8 did not report clinically relevant POPF, and the remaining 5 studies compared pancreatico-enteric anastomosis with either hand-sewn or stapler techniques. Finally, 7 randomized [15-21] and 25 observational studies [22-47] with 4,022 patients were included (1,184 patients had hand-sewn closure of pancreatic stump and the remaining 2,838 patients had stapler closure of pancreatic stump following DP) (Fig. 1). Among those who had stapler closure of pancreatic stump, 914 patients had reinforcement of the stapler line. The remaining 1,924 participants did not have reinforcement of the stapler line. Table 1 outlines included studies and related data.

Methodological appraisal

The risk of bias assessment of eligible RCTs is outlined in Fig. 2A. Six studies were associated with low risk of selection bias. One RCT had an unclear risk of selection bias because of the lack of data about allocation concealment or random sequence generation. Six RCTs were associated with a low risk of performance bias. One RCT was associated with a high risk of performance bias because of lack of blinding of their patients. Two RCTs were associated with a low risk of detection bias. Four RCTs were associated with a high risk of detection bias because of the lack of blinding of assessors. One RCT was associated with an unclear risk of detection bias. All included RCTs were associated with low risks of attrition, reporting, or other bias types.

Fig. 2B outlines the outcome of the risk of bias assessment of included observational studies. Eight studies were associated with an unclear risk of bias due to confounding. The rest of included studies were associated with a low risk of bias due to confounding. The risk of bias due to patient selection was unclear in 9 studies and low in the rest of included studies. Risks of other types of bias were low in all included observational

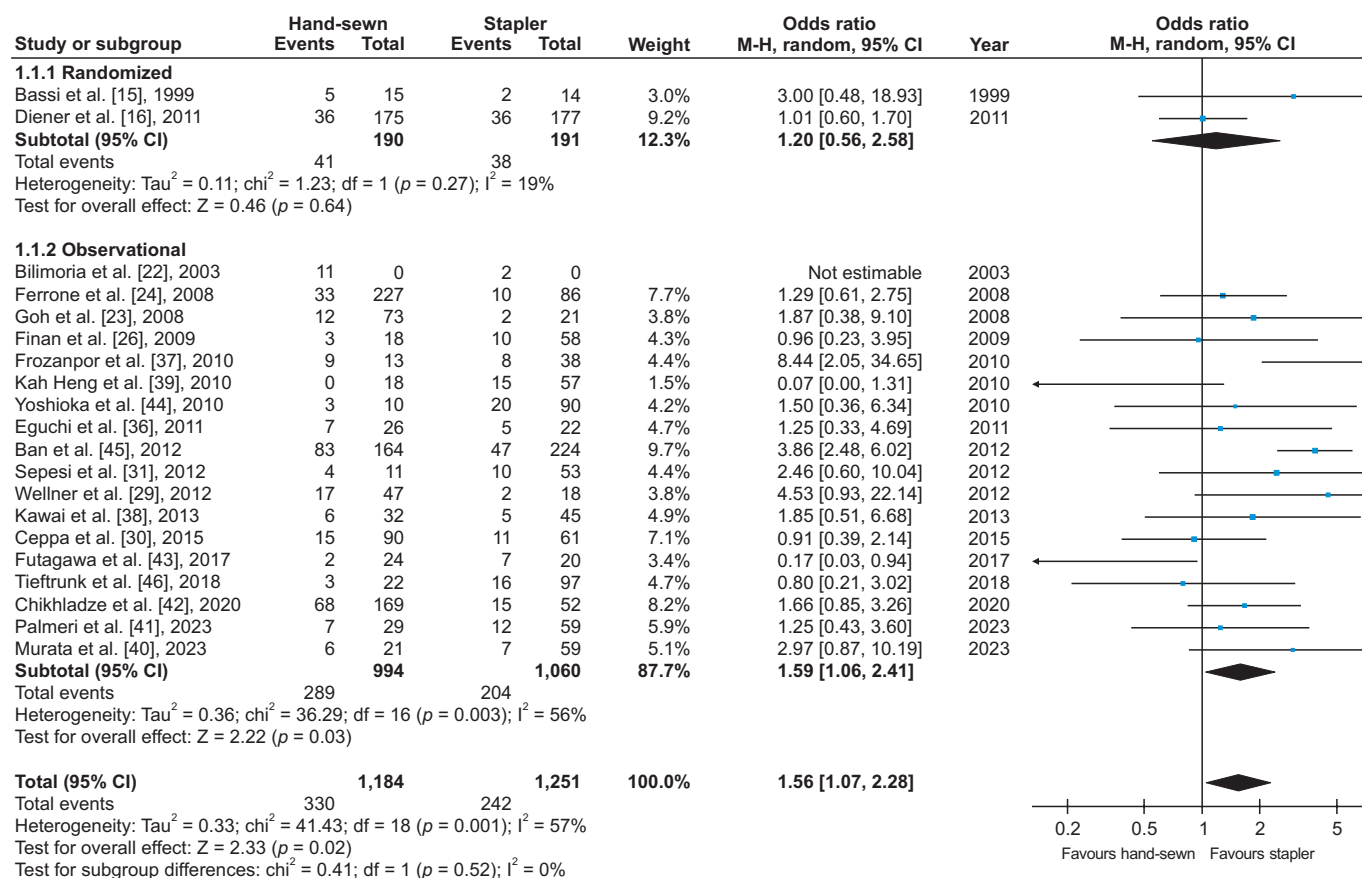


Fig. 3. Forest plots of comparison of hand-sewn versus stapler pancreatic stump on clinically relevant postoperative pancreatic fistula. Solid squares denote odds ratio. Horizontal lines represent 95% CIs. Diamond denotes pooled effect size. M-H, Mantel Haenszel test; CI, confidence interval.

studies.

Synthesis of outcomes

Outcomes are presented in Fig. 3, 4, Supplementary Fig. 1, Supplementary Table 1.

Hand-sewn closure versus stapler closure

Clinically relevant postoperative pancreatic fistula

Twenty studies (2,435 patients) provided information on clinically relevant POPF. Rates of clinically relevant POPF in hand-sewn and stapler groups were 27.6% and 19.3%, respectively. Hand-sewn closure significantly increased the risk of clinically relevant POPF compared to stapler closure (OR: 1.56, 95% CI: 1.07–2.28, $p = 0.02$). There was a moderate degree of heterogeneity among studies ($I^2: 57\%$, $p = 0.001$). There was a moderate certainty of the evidence.

Randomized controlled trials

Two studies (381 patients) provided information on clinically relevant POPF. Rates of clinically relevant POPF in hand-sewn and stapler groups were 21.6% and 19.9%, respectively. No significant difference in risk of POPF was detected between the two cohorts (OR: 1.20, 95% CI: 0.56–2.58, $p = 0.64$). There was a moderate degree of heterogeneity among studies ($I^2: 19\%$, $p = 0.27$). There was a moderate certainty of the evidence.

Observational studies

Eighteen studies (2,054 patients) provided information on clinically relevant POPF. Rates of clinically relevant POPF in hand-sewn and stapler groups were 29.1% and 19.2%, respectively. Hand-sewn closure significantly increased the risk of clinically relevant POPF compared to stapler closure (OR: 1.59, 95% CI: 1.06–2.41, $p = 0.03$). There was a moderate degree of heterogeneity among studies ($I^2: 56\%$, $p = 0.003$). There was a moderate certainty of the evidence.

Reinforced stapler closure versus standard stapler closure

Clinically relevant postoperative pancreatic fistula

Fifteen studies (1,587 patients) provided information on clinically relevant POPF. Rates of clinically relevant POPF in hand-sewn and stapler groups were 12.6% and 20.8%, respectively. Use of reinforced stapler closure was associated with a significantly reduced rate of POPF when compared with standard stapler closure (OR: 0.54, 95% CI: 0.36–0.80, $p = 0.002$). There was a moderate degree of heterogeneity among studies ($I^2: 35\%$, $p = 0.09$). There was a moderate certainty of the evidence.

Randomized controlled trials

Five studies (622 patients) provided information on clinically relevant POPF. Rates of clinically relevant POPF in hand-sewn

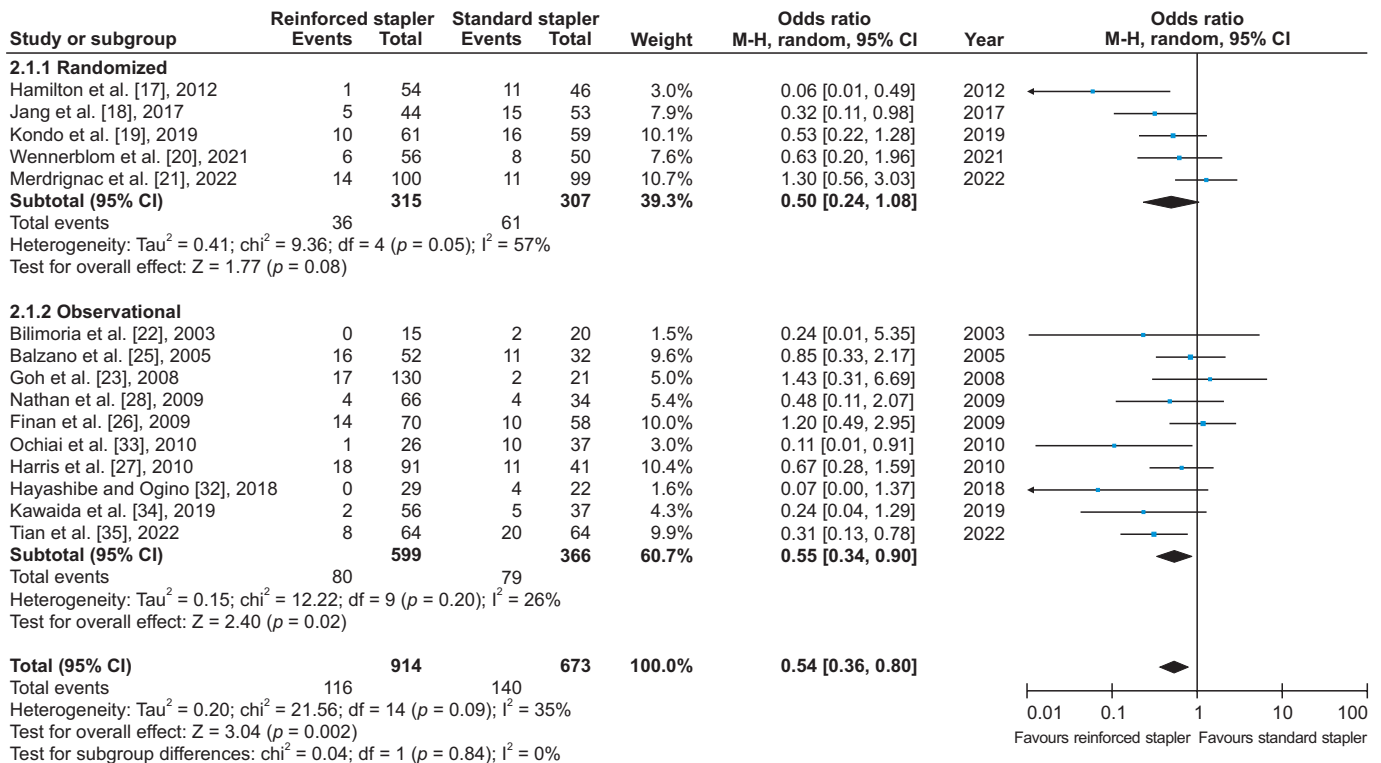


Fig. 4. Forest plots of comparison of reinforced versus standard pancreatic stump on clinically relevant postoperative pancreatic fistula. Solid squares denote odds ratio. Horizontal lines represent 95% CIs. Diamond denotes pooled effect size. M-H, Mantel Haenszel test; CI, confidence interval.

and stapler groups were 11.4% and 20.4%, respectively. Use of reinforced stapler closure was associated with a non-significant reduction in the rate of POPF when compared with standard stapler closure (OR: 0.50, 95% CI: 0.24–1.08, $p = 0.08$). There was a moderate degree of heterogeneity among studies ($I^2: 57%$, $p = 0.05$). There was a moderate certainty of the evidence.

Observational studies

Ten studies (965 patients) provided information on clinically relevant POPF. Rates of clinically relevant POPF in hand-sewn and stapler groups were 13.3% and 21.6%, respectively. Use of reinforced stapler closure was associated with a significantly reduced rate of POPF when compared with standard stapler closure (OR: 0.55, 95% CI: 0.34–0.90, $p = 0.02$). There was a moderate degree of heterogeneity among studies ($I^2: 26%$, $p =$

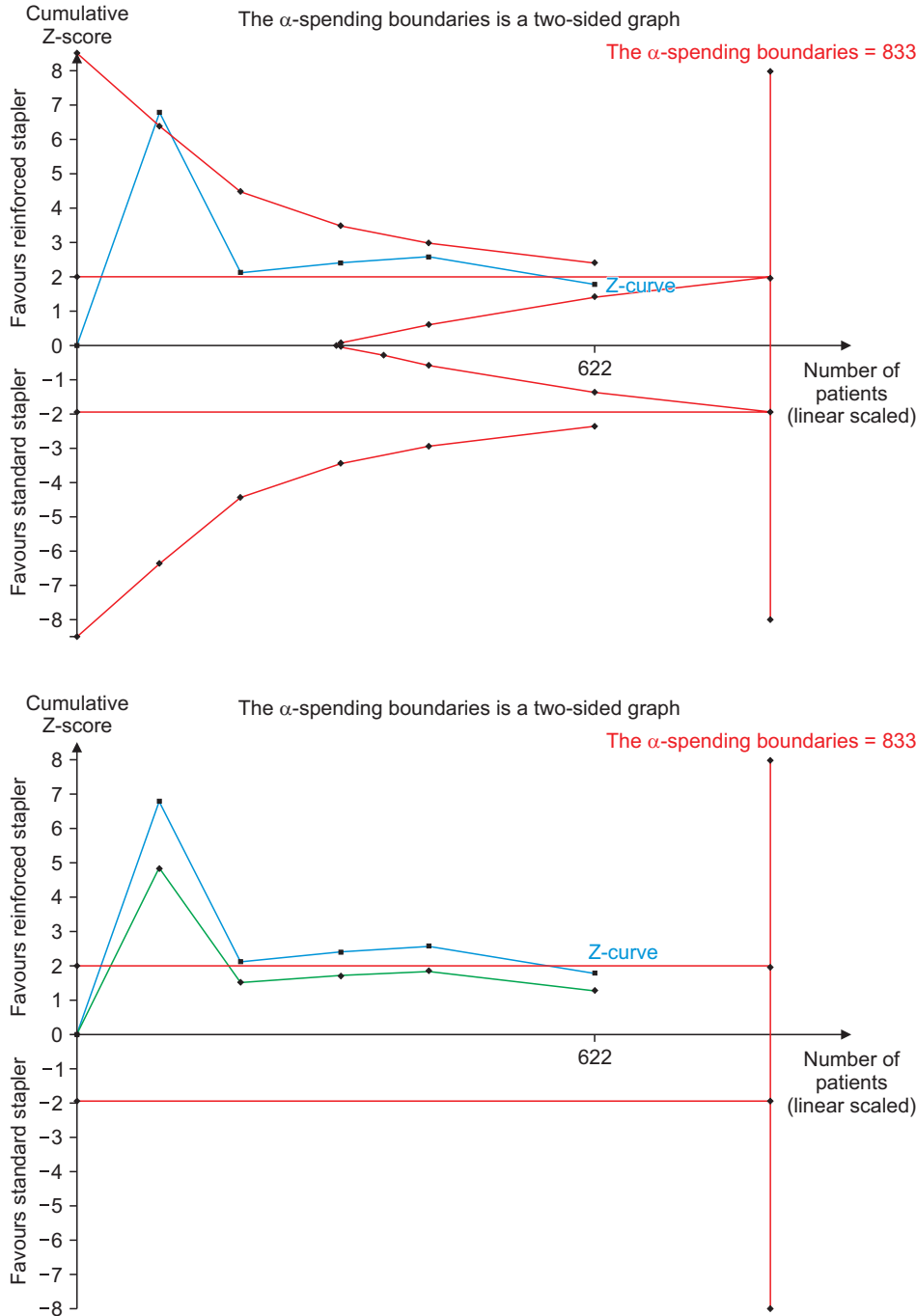


Fig. 5. Results of trial sequential analysis for clinically relevant postoperative pancreatic fistula. Red inward-sloping dashed lines make up trial sequential monitoring boundaries. To the right, outward sloping red dashed lines make up the futility region. Solid blue line is cumulative Z curve. Solid green line presents penalised Z-value.

0.29). There was a moderate certainty of the evidence.

Sensitivity analysis

In the analysis of reinforced stapler versus standard stapler closure, when RCTs were considered, removal of study of Merdrignac et al. [21] changed findings significantly in favour of reinforced stapler ($p = 0.01$) and decreased heterogeneity from 57% to 32%.

Trial sequential analysis

Hand-sewn closure versus stapler closure

Clinically relevant POPF: Since only two RCTs were considered in the analysis of hand-sewn versus stapler closure of pancreatic stump, no trial sequential analysis was possible.

Reinforced stapler closure versus standard stapler closure

Clinically relevant POPF: The calculated information size was 833 patients. There was no crossing of α -spending boundaries by Z-curve. Futility boundaries were reached before the information size. Penalized Z-value remained < 1.96 . This indicated that the meta-analysis was not conclusive and that findings on this outcome measure were associated with type 2 error (Fig. 5).

DISCUSSION

Considering the ongoing debate about the most appropriate approach in closure of pancreatic stump following DP, we performed this comprehensive meta-analysis of all existing comparative research to investigate outcomes associated with hand-sewn and stapler closure of pancreatic stump. We included 7 randomized and 25 observational studies enrolling 4,022 participants undergoing DP, of whom 1,184 underwent hand-sewn closure of pancreatic stump and the remaining 2,838 patients had stapler closure of pancreatic stump. Hand-sewn closure was associated with a significantly higher rate of clinically relevant POPF than stapler closure. Moreover, when stapler closure was considered, staple line reinforcement with PGA mesh significantly reduced formation of such POPF.

When considering only RCTs, no significant difference was found in risk of clinically relevant POPF between the two cohorts. The reduction in POPF rate in favour reinforced stapler closure did not reach statistical significance. When considering observational studies, hand-sewn closure significantly increased the rate of clinically relevant POPF compared to stapler closure. Moreover, when stapler closure was considered, staple line reinforcement significantly decreased the formation of clinically relevant POPF.

For the comparison of hand-sewn versus stapler closure of pancreatic stump, no trial sequential analysis was possible as the minimum number of 5 RCTs was unavailable. Nevertheless, for the comparison of reinforced versus standard stapler closure, the trial sequential analysis showed that results of the

conducted meta-analysis of RCTs were associated with type 2 error because the minimal population size of 833 randomized patients to eliminate such risk could not be achieved. This indicates the need for future adequately powered RCTs to provide stronger evidence in this context.

The reported heterogeneity was moderate in all our outcome syntheses, indicating robustness of our findings regarding most outcomes. Previous meta-analyses have studied outcomes of pancreatic stump closure using variety of techniques. Nevertheless, they were either non-specific with inclusions of several comparisons or lacking outcome syntheses with respect to clinically relevant POPF. Ratnayake et al. [48] have conducted a network meta-analysis of several techniques and concluded that patch coverage following suture or stapler closure is associated with the lowest POPF risk and best results among the existing stump closure techniques after DP. However, the authors only included two studies with low sample sizes for the comparison of suture versus hand-sewn techniques. They missed 5 RCTs that evaluated reinforced stapler technique with PGA mesh. Most importantly, all comparisons in the aforementioned study had less than 5 studies, which questioned the validity and indication for a network-meta-analysis in this context. Tieftrunk et al. [46] have conducted a meta-analysis of all available pancreatic stump closure techniques and concluded that following DP, stapler closure, pancreatico-enteric anastomosis, and seromuscular patches/falciform were associated with lower incidence of POPF in comparison with suture closure alone. Although their meta-analysis was comprehensive, the main conclusion was made based on all types of POPF including type A. Moreover, several more studies have been published after their meta-analysis, which should now be considered for any meta-analysis in this context.

In terms of comparative evidence of hand-sewn and stapler pancreatic stump closure in DP, there were only two available RCTs, of which one was very old. Although randomized trials are considered as highest standard study design for comparative research, in this context, considering that majority of participants are not randomly allocated within trials, some may argue that RCT findings may not present the 'real-world' practice. Nevertheless, there was a robust evidence from a large number of observational studies with a pooled population size of more than 2,000 patients which indicated that stapler closure of pancreatic stump significantly reduced the rate of clinically relevant POPF compared to hand-sewn closure technique.

In view of comparative evidence of reinforced and standard stapler closure technique, although meta-analysis of RCTs demonstrated no statistical significance between two groups in terms of risk development of clinically relevant POPF, we believe that the risk reduction of almost 10% in favour of reinforced stapler is clinically significant. Interestingly, during our one-leave-out sensitivity analysis, removal of one study from the analysis changed findings significantly in favour of reinforced stapler and reduced heterogeneity from 57% to 32%.

Moreover, findings of robust evidence from observational studies further confirmed this conclusion. Furthermore, detection of risk of type 2 error from the conducted trial sequential analysis further supported our conclusion that reinforced stapler closure with PGA mesh had a lower risk of clinically relevant POPF in comparison with standard stapler closure. On the other hand, our conclusions might have overstated such benefits in favour of reinforced stapler closure technique as 3 out of 5 included RCTs reported that reinforced stapler during DP did not reduce the incidence of clinically relevant pancreatic fistula compared to stapler without reinforcement. This dilemma further indicates the need for future RCTs in this context to provide more robust evidence in favour of either treatment strategy.

In order to address the risk of type 2 error detected in our trial sequential analysis, there is a need for further high quality RCTs adequately powered in this context. Elimination of risk of type 2 error can only be achieved by having larger sample sizes. In the analysis of reinforced stapler closure versus standard stapler closure, the minimum pooled population requirement has been estimated to be 833 patients while available studies provided a pooled population size of 622 patients. We do not hesitate to recommend a repeat evidence synthesis attempt in the literature after achieving a total pooled population size of 833 patients provided by future RCTs. With respect to the comparison of hand-sewn closure versus stapler closure techniques, there is a need for at least 3 more RCTs to be able to conduct a trial sequential analysis and estimate a minimum population size and subsequently evaluate the risk of type 2 error.

Considering the existence of several available techniques in pancreatic stump closure after DP, we do not hesitate to discourage network comparison between treatments when evidence synthesis is considered due to the presence of heterogeneous best available level of evidence surrounding existing techniques. We believe that each comparison in this context deserves an independent evidence synthesis with the main focus on clinically relevant POPF to investigate the real advantage of one approach over the other.

Readers of this study should consider limitations of this study when interpreting its findings. Despite the existence of robust level 2 evidence, the number of included RCTs was limited, particularly in the comparison of hand-sewn versus stapler closure technique. Type 2 error risk was evident in both comparisons considered in this meta-analysis. The risk of detection bias and the performance bias were high in one and four studies due to lack of blinding of outcome assessors and patients, respectively. Finally, we were not able to report outcomes with respect to baseline characteristics of included patients, which might have biased our results, particularly when observational studies were considered.

CONCLUSIONS

The best available evidence indicates that reinforced stapler closure of pancreatic remnant after DP may reduce risk of clinically relevant POPF compared to hand-sewn closure or stapler closure without reinforcement. Although the available level 2a evidence is robust, the level 1a evidence is subject to type 2 error. Future adequately powered randomized research is needed to provide stronger evidence.

SUPPLEMENTARY DATA

Supplementary data related to this article can be found at <https://doi.org/10.14701/ahbps.24-015>.

FUNDING

None.

CONFLICT OF INTEREST

No potential conflict of interest relevant to this article was reported.

ORCID

Shahin Hajibandeh, <https://orcid.org/0000-0001-6159-1068>

Shahab Hajibandeh, <https://orcid.org/0000-0002-3294-4335>

Mohammed Abdallah Hablus,

<https://orcid.org/0000-0002-0931-0430>

Hassaan Bari, <https://orcid.org/0000-0001-7098-6942>

Adithya Malolan Pathanki,

<https://orcid.org/0000-0002-9796-1689>

Majid Ali, <https://orcid.org/0000-0002-3243-9638>

Jawad Ahmad, <https://orcid.org/0000-0002-1046-5819>

Gabriele Marangoni, <https://orcid.org/0000-0002-0381-9551>

Saboor Khan, <https://orcid.org/0000-0002-2167-1722>

For Tai Lam, <https://orcid.org/0009-0005-6846-6856>

AUTHOR CONTRIBUTIONS

Conceptualization: Shahin H. Data curation: Shahin H, Shahab H. Methodology: Shahin H, Shahab H. Visualization: All authors. Writing - original draft: Shahin H, Shahab H. Writing - review & editing: All authors.

REFERENCES

1. Dhanireddy KK, Fishbein TM. Distal pancreatectomy. In: Evans SRT, Chahine AA, ed. *Surgical pitfalls e-book: prevention and management*. Saunders, 2008:375-378.
2. Hajibandeh S, Ghassemi N, Hajibandeh S, Romman S, Ghassemi A, Laing RW, et al. Meta-analysis of laparoscopic spleen-preserving dis-

- tal pancreatectomy versus laparoscopic distal pancreatectomy with splenectomy: an insight into confounding by indication. *Surgeon* 2023;22:e13-e25.
3. Xu Y, Jin C, Fu D, Yang F. External validation of fistula risk scores for postoperative pancreatic fistula after distal pancreatectomy. *Surgery* 2023;174:1416-1421.
 4. Bassi C, Dervenis C, Butturini G, Fingerhut A, Yeo C, Izbicki J, et al. Postoperative pancreatic fistula: an international study group (ISGPF) definition. *Surgery* 2005;138:8-13.
 5. Bassi C, Marchegiani G, Dervenis C, Sarr M, Abu Hilal M, Adham M, et al. The 2016 update of the international study group (ISGPS) definition and grading of postoperative pancreatic fistula: 11 years after. *Surgery* 2017;161:584-591.
 6. Bonsdorff A, Ghorbani P, Helanterä I, Tarvainen T, Kontio T, Belfrage H, et al. Development and external validation of DISPAIR fistula risk score for clinically relevant postoperative pancreatic fistula risk after distal pancreatectomy. *Br J Surg* 2022;109:1131-1139.
 7. De Pastena M, van Bodegraven EA, Mungroop TH, Vissers FL, Jones LR, Marchegiani G, et al. Distal pancreatectomy fistula risk score (D-FRS): development and international validation. *Ann Surg* 2023;277:e1099-e1105.
 8. Yang F, Jin C, Hao S, Fu D. Drain contamination after distal pancreatectomy: incidence, risk factors, and association with postoperative pancreatic fistula. *J Gastrointest Surg* 2019;23:2449-2458.
 9. McMillan MT, Christein JD, Callery MP, Behrman SW, Drebin JA, Hollis RH, et al. Comparing the burden of pancreatic fistulas after pancreatoduodenectomy and distal pancreatectomy. *Surgery* 2016;159:1013-1022.
 10. Yang F, Jin C, Li J, Di Y, Zhang J, Fu D. Clinical significance of drain fluid culture after pancreatoduodenectomy. *J Hepatobiliary Pancreat Sci* 2018;25:508-517.
 11. Kollár D, Huszár T, Pohárnok Z, Cselovszky É, Oláh A. A review of techniques for closure of the pancreatic remnant following distal pancreatectomy. *Dig Surg* 2016;33:320-328.
 12. Liberati A, Altman DG, Tetzlaff J, Mulrow C, Gøtzsche PC, Ioannidis JP, et al. The PRISMA statement for reporting systematic reviews and meta-analyses of studies that evaluate healthcare interventions: explanation and elaboration. *BMJ* 2009;339:b2700.
 13. Higgins JPT, Thomas J, Chandler J, Cumpston M, Li T, Page MJ, et al. *Cochrane Handbook for Systematic Reviews of Interventions* version 6.1 (updated September 2020) [Internet]. Cochrane 2020 [cited 2023 Oct 20]. Available from: www.training.cochrane.org/handbook.
 14. Sterne JA, Hernán MA, Reeves BC, Savović J, Berkman ND, Viswanathan M, et al. ROBINS-I: a tool for assessing risk of bias in non-randomised studies of interventions. *BMJ* 2016;355:i4919.
 15. Bassi C, Butturini G, Falconi M, Salvia R, Sartori N, Caldiron E, et al. Prospective randomised pilot study of management of the pancreatic stump following distal resection. *HPB (Oxford)* 1999;1:203-207.
 16. Diener MK, Seiler CM, Rossion I, Kleeff J, Glanemann M, Butturini G, et al. Efficacy of stapler versus hand-sewn closure after distal pancreatectomy (DISPACT): a randomised, controlled multicentre trial. *Lancet* 2011;377:1514-1522.
 17. Hamilton NA, Porembka MR, Johnston FM, Gao F, Strasberg SM, Linehan DC, et al. Mesh reinforcement of pancreatic transection decreases incidence of pancreatic occlusion failure for left pancreatectomy: a single-blinded, randomized controlled trial. *Ann Surg* 2012;255:1037-1042.
 18. Jang JY, Shin YC, Han Y, Park JS, Han HS, Hwang HK, et al. Effect of polyglycolic acid mesh for prevention of pancreatic fistula following distal pancreatectomy: a randomized clinical trial. *JAMA Surg* 2017;152:150-155.
 19. Kondo N, Uemura K, Nakagawa N, Okada K, Kuroda S, Sudo T, et al. A multicenter, randomized, controlled trial comparing reinforced staplers with bare staplers during distal pancreatectomy (HiSCO-07 trial). *Ann Surg Oncol* 2019;26:1519-1527.
 20. Wennerblom J, Ateeb Z, Jönsson C, Björnsson B, Tingstedt B, Williamsson C, et al. Reinforced versus standard stapler transection on postoperative pancreatic fistula in distal pancreatectomy: multicentre randomized clinical trial. *Br J Surg* 2021;108:265-270.
 21. Merdrignac A, Garnier J, Dokmak S, Regenet N, Lesurtel M, Mabrut JY, et al. Effect of the use of reinforced stapling on the occurrence of pancreatic fistula after distal pancreatectomy: results of the REPLAY (REinforcement of the Pancreas in distal pAncreatectomy) multicenter randomized clinical trial. *Ann Surg* 2022;276:769-775.
 22. Bilimoria MM, Cormier JN, Mun Y, Lee JE, Evans DB, Pisters PW. Pancreatic leak after left pancreatectomy is reduced following main pancreatic duct ligation. *Br J Surg* 2003;90:190-196.
 23. Goh BK, Tan YM, Chung YF, Cheow PC, Ong HS, Chan WH, et al. Critical appraisal of 232 consecutive distal pancreatectomies with emphasis on risk factors, outcome, and management of the postoperative pancreatic fistula: a 21-year experience at a single institution. *Arch Surg* 2008;143:956-965.
 24. Ferrone CR, Warshaw AL, Rattner DW, Berger D, Zheng H, Rawal B, et al. Pancreatic fistula rates after 462 distal pancreatectomies: staplers do not decrease fistula rates. *J Gastrointest Surg* 2008;12:1691-1697; discussion 1697-1698.
 25. Balzano G, Zerbi A, Cristallo M, Di Carlo V. The unsolved problem of fistula after left pancreatectomy: the benefit of cautious drain management. *J Gastrointest Surg* 2005;9:837-842.
 26. Finan KR, Cannon EE, Kim EJ, Wesley MM, Arnoletti PJ, Heslin MJ, et al. Laparoscopic and open distal pancreatectomy: a comparison of outcomes. *Am Surg* 2009;75:671-679; discussion 679-680.
 27. Harris LJ, Abdollahi H, Newhook T, Sauter PK, Crawford AG, Chojnacki KA, et al. Optimal technical management of stump closure following distal pancreatectomy: a retrospective review of 215 cases. *J Gastrointest Surg* 2010;14:998-1005.
 28. Nathan H, Cameron JL, Goodwin CR, Seth AK, Edil BH, Wolfgang CL, et al. Risk factors for pancreatic leak after distal pancreatectomy. *Ann Surg* 2009;250:277-281.
 29. Wellner UF, Makowiec F, Sick O, Hopt UT, Keck T. Arguments for an individualized closure of the pancreatic remnant after distal pancreatic resection. *World J Gastrointest Surg* 2012;4:114-120.
 30. Ceppa EP, McCurdy RM, Becerra DC, Kilbane EM, Zyromski NJ, Nakeeb A, et al. Does pancreatic stump closure method influence distal pancreatectomy outcomes? *J Gastrointest Surg* 2015;19:1449-1456.

31. Sepesi B, Moalem J, Galka E, Salzman P, Schoeniger LO. The influence of staple size on fistula formation following distal pancreatectomy. *J Gastrointest Surg* 2012;16:267-274.
32. Hayashibe A, Ogino N. Clinical study for pancreatic fistula after distal pancreatectomy with mesh reinforcement. *Asian J Surg* 2018;41:236-240.
33. Ochiai T, Sonoyama T, Soga K, Inoue K, Ikoma H, Shiozaki A, et al. Application of polyethylene glycolic acid felt with fibrin sealant to prevent postoperative pancreatic fistula in pancreatic surgery. *J Gastrointest Surg* 2010;14:884-890.
34. Kawaida H, Kono H, Amemiya H, Hosomura N, Saito R, Takahashi K, et al. Use of a reinforced triple-row stapler following distal pancreatectomy reduces the incidence of postoperative pancreatic fistula in patients with a high BMI. *Anticancer Res* 2019;39:1013-1018.
35. Tian F, Luo MJ, Sun MQ, Lu J, Huang BW, Guo JC. Staple line lockstitch reinforcement decreases clinically relevant pancreatic fistula following distal pancreatectomy: results of a propensity score matched retrospective analysis. *Front Oncol* 2022;12:999002.
36. Eguchi H, Nagano H, Tanemura M, Takeda Y, Marubashi S, Kobayashi S, et al. A thick pancreas is a risk factor for pancreatic fistula after a distal pancreatectomy: selection of the closure technique according to the thickness. *Dig Surg* 2011;28:50-56.
37. Frozanpor F, Albiin N, Linder S, Segersvärd R, Lundell L, Arnelo U. Impact of pancreatic gland volume on fistula formation after pancreatic tail resection. *JOP* 2010;11:439-443.
38. Kawai M, Tani M, Okada K, Hirono S, Miyazawa M, Shimizu A, et al. Stump closure of a thick pancreas using stapler closure increases pancreatic fistula after distal pancreatectomy. *Am J Surg* 2013;206:352-359.
39. Kah Heng CA, Salleh I, San TS, Ying F, Su-Ming T. Pancreatic fistula after distal pancreatectomy: incidence, risk factors and management. *ANZ J Surg* 2010;80:619-623.
40. Murata Y, Maeda K, Ito T, Gyoten K, Hayasaki A, Iizawa Y, et al. Efficacy of reinforced stapler versus hand-sewn closure of the pancreatic stump during pure laparoscopic distal pancreatectomy to reduce pancreatic fistula. *Surg Laparosc Endosc Percutan Tech* 2023;33:99-107.
41. Palmeri M, Furbetta N, Di Franco G, Gianardi D, Guadagni S, Bianchini M, et al. Comparison of different pancreatic stump management strategies during robot-assisted distal pancreatectomy. *Int J Med Robot* 2023;19:e2470.
42. Chikhladze S, Makowiec F, Küsters S, Riediger H, Sick O, Fichtner-Feigl S, et al. The rate of postoperative pancreatic fistula after distal pancreatectomy is independent of the pancreatic stump closure technique - a retrospective analysis of 284 cases. *Asian J Surg* 2020;43:227-233.
43. Futagawa Y, Takano Y, Furukawa K, Kanehira M, Onda S, Sakamoto T, et al. Comparison of outcomes with hand-sewn versus stapler closure of pancreatic stump in distal pancreatectomy. *Anticancer Res* 2017;37:2515-2521.
44. Yoshioka R, Saiura A, Koga R, Seki M, Kishi Y, Morimura R, et al. Risk factors for clinical pancreatic fistula after distal pancreatectomy: analysis of consecutive 100 patients. *World J Surg* 2010;34:121-125.
45. Ban D, Shimada K, Konishi M, Saiura A, Hashimoto M, Uesaka K. Stapler and nonstapler closure of the pancreatic remnant after distal pancreatectomy: multicenter retrospective analysis of 388 patients. *World J Surg* 2012;36:1866-1873.
46. Tieftrunk E, Demir IE, Schorn S, Sargut M, Scheufele F, Calavrezos L, et al. Pancreatic stump closure techniques and pancreatic fistula formation after distal pancreatectomy: meta-analysis and single-center experience. *PLoS One* 2018;13:e0197553.
47. Watanabe Y, Horiuchi A, Yoshida M, Yamamoto Y, Sugishita M, Sato K, et al. Usefulness of linear stapling device in distal pancreatic resection. *Hepatogastroenterology* 2007;54:1315-1318.
48. Ratnayake CBB, Wells C, Hammond J, French JJ, Windsor JA, Pandanaboyana S. Network meta-analysis comparing techniques and outcomes of stump closure after distal pancreatectomy. *Br J Surg* 2019;106:1580-1589.

Appendix 1. Search strategy

Search no.	Search strategy ^{a)}
#1	MeSH descriptor: [distal pancreatectomy] explode all trees
#2	distal pancreatectomy: TI,AB,KW
#3	MeSH descriptor: [pancreatectomy] explode all trees
#4	Pancreatectomy: TI,AB,KW
#5	#1 OR #2 OR #3 OR #4
#6	MeSH descriptor: [pancreatic stump] explode all trees
#7	pancreatic stump : TI,AB,KW
#8	MeSH descriptor: [closure] explode all trees
#9	closure: TI,AB,KW
#10	stapler: TI,AB,KW
#11	hand-sewn: TI,AB,KW
#12	mesh: TI,AB,KW
#13	#6 OR #7 OR #8 OR #9 OR 10 OR #11 OR #12
#14	#5 AND #13

^{a)}This search strategy was adopted for following databases: MEDLINE, EMBASE, CINAHL, and the Cochrane Central Register of Controlled Trials (CENTRAL).