



Determining the doses of probiotics for application in *Scylla tranquebarica* (Fabricius 1798) larvae to produce crablet

Gunarto Gunarto^{1,*}, Yustian Rovi Alfiansah², Muliani Muliani¹, Bunga Rante Tampangalo¹, Herlinah Herlinah¹, Nurbaya Nurbaya¹, Rosmiati Rosmiati¹

¹ Research Center for Fisheries, National Research and Innovation Agency, Cibinong 16911, Indonesia

² Research Center for Applied Microbiology, National Research and Innovation Agency, Cibinong 16911, Indonesia

Abstract

Mass mortalities of mud crab *Scylla* spp. larvae due to pathogenic *Vibrio* spp. outbreaks have frequently occurred in hatcheries. To overcome this problem, probiotics containing *Bacillus subtilis* bacteria are applied to inhibit pathogenic ones. We tested different doses of probiotic-containing *B. subtilis* (10^8 CFU/g) on the *Scylla tranquebarica* larvae and investigated the microbiota population, including *Vibrio*. Water quality, larvae development, and crablet production were also monitored. The recently hatched larvae were grown in twelve conical fiber tanks filled with 200 L sterile seawater, with a salinity of 30 ppt at a stocking density of 80 ind/L. Four different doses of probiotics were applied in the larvae rearing, namely, A = 2.5 mg/L, B = 5 mg/L, C = 7.5 mg/L, and D = 0 mg/L, with three replicates. Next-generation sequencing analysis was used to obtain the abundance of microbes in the whole body of megalopa and the water media for larvae rearing after applying probiotics. Sixteen Raw Deoxyribonucleic Acid samples (eight from a whole body of megalopa extraction from four treatments of probiotics defined as A, B, C, D, and eight from water media extraction from four treatments of probiotic defined as E, F, G, H) were prepared. Then, they were sent to the Genetics Science Laboratory for NGS analysis. Ammonia, nitrite, total organic matter (TOM), larvae, and crablet production were monitored. Based on the Next-generation sequencing analysis data, the *Vibrio* spp. decreased significantly ($p < 0.05$) than control test (D) in megalopa-applied probiotics at the doses of 2.5 mg/L (A) and 7.5 mg/L (C) and in the water media for megalopa rearing treated with probiotics at the dosage of 5.0 mg/L (F). Ammonia in the zoea stage in B treatment and TOM in the zoea and megalopa stage in B and C treatments were decreased significantly ($p < 0.05$). It impacts the higher number of zoea survival in treatments B and C. Finally, it results in a significantly high crablet production in treatments B and C. Therefore, the dosage of 5 mg/L to 7.5 mg/L improves crablet *S. tranquebarica* production significantly.

Keywords: Crablet, Probiotic, *Vibrio*, Water quality

Received: Sep 17, 2023 Revised: Nov 29, 2023 Accepted: Dec 20, 2023

*Corresponding author: Gunarto Gunarto

Research Center for Fisheries, National Research and Innovation Agency, Cibinong 16911, Indonesia

Tel: +62-081119333632, E-mail: gunartom@yahoo.com

This is an Open Access article distributed under the terms of the Creative Commons Attribution Non-Commercial License (<http://creativecommons.org/licenses/by-nc/4.0/>) which permits unrestricted non-commercial use, distribution, and reproduction in any medium, provided the original work is properly cited.

Copyright © 2024 The Korean Society of Fisheries and Aquatic Science

Introduction

In the Asia Pacific region, mud crab (*Scylla* spp.) has great economic value and becomes a potential candidate for cultured biota in brackish water ponds due to its high growth rate (Gunarto & Herlinah, 2015; Gunarto et al., 2020; Talib et al., 2017). Thus, it is necessary to produce mass mud crab seeds continuously to fulfill the needs of the crab seeds. However, crablet production from hatcheries is still low (Gunarto et al., 2021; Waiho et al., 2018) due to the mass mortality of *Scylla* spp. larvae frequently occur after several days of rearing. The mass mortality of larvae is due mainly to pathogenic bacterial infections. *Vibrio harveyi*, *Vibrio alginolyticus*, and *Vibrio parahaemolyticus* are pathogenic bacteria that have been reported to infect mud crab larvae (Talib et al., 2017). To promote better survival rates of cultured biota, including in larvae of *Scylla* spp. culture, utilization of beneficial bacteria, so-called probiotics, has been performed.

Probiotic bacteria have already been widely applied in aquaculture practices (Kuebutornye et al., 2019). Specific probiotic isolates can generate digestive enzymes that support healthy gut bacterial communities, inhibit harmful bacteria formation, and boost overall immunity. Water quality in hatcheries has reportedly been improved by introducing probiotics directly to the water during larval culture (Ayisi et al., 2017; Buruiană et al., 2014; Hlordzi et al., 2020). There are many *Bacillus* spp. species that have been used as probiotics. As probiotics, *Bacillus subtilis* and *Bacillus pumilus* isolated from crab intestines can control pathogenic Vibrios in mud crab aquaculture (Wu et al., 2014). Furthermore, *Bacillus amyloliquefaciens* was isolated from the digestive tract of freshwater fish *Labeo calbasu* (Kavitha et al., 2018). *Bacillus licheniformis* supplemented feed fed prawns to be competitively excluded pathogenic bacteria, such as *Pseudomonas* spp., *Klebsiella* spp., *Staphylococcus* spp., and *Acinetobacter* spp. in shrimp gut (García-Medel et al., 2020; Sudha et al., 2019). *B. subtilis*, a beneficial bacterium, has been applied in shrimp and fish aquaculture, improving water quality (Hlordzi et al., 2020; Olmos, 2014).

The ideal dose of *B. subtilis* as probiotics for the mud crab *Scylla* spp. larvae rearing in the hatchery, however, is not well understood. Beneficial probiotics application in larvae rearing is expected to reduce the risk of developing various diseases, including Vibriosis caused by *Vibrio* spp. infection and to optimize the larvae growth to the crablet stage. In the present study, we use probiotics containing *B. subtilis*, which was initially isolated from seaweed, *Kapaphycus alvarezii*, that was cultured in the coastal area of Laikang village, Jeneponto regency, South

Sulawesi, Indonesia. Probiotics have also been kept in powder or powder form to make their application easier and shield probiotic organisms from environmental damage. The mechanisms of *Bacillus* spp. to eliminate pathogenic bacteria include one of the ways by the formation of macrophages extracellular traps as the central cell of immune response (Romo-Barrera et al., 2021). Earlier researchers reported that to prove the efficacy of probiotics-fed diets containing *B. subtilis*, the real-time PCR was employed to determine the mRNA levels of prophenoloxidase, peroxinectin, lipopolysaccharide- and b-1,3-glucan-binding protein and serine protein. The expression of all immune-related genes studied could be significantly up-regulated ($p < 0.05$) than control (Zokaeifar et al., 2012).

Probiotics can also alter the gut microbiota of larval, fry, and juvenile intestines to reduce pathogen adherence and colonization. To increase the quantity of good bacteria in the stomach, they are introduced to water or a fish diet (Vaseeharan & Ramasamy, 2003). Due to the small size of megalopa, we were not able to take their intestine for samples of gut microbiota; therefore, the whole body of megalopa and water media for larvae rearing are used for NGS analysis for observation on the effect of different dosages of probiotics *B. subtilis* to the microbiota composition and abundance. Our study aims to study the effect of various doses of probiotics on the mud crab *Scylla tranquebarica* larvae rearing. In addition, we also looked at the number of microbiotas in the megalopa's entire body and the water used for larvae rearing, water quality parameters, larvae development, and crablet production. To generate the best crablets possible in the hatchery, we must also identify the suitable doses of probiotics containing *B. subtilis* to be applied during the rearing of *S. tranquebarica* larvae.

Materials and Methods

Mud crab larvae rearing and water quality monitoring

Seawater at a salinity of 30 ppt was sterilized using 20 mg/L chlorine overnight, then aerated and neutralized with 20 mg/L sodium thiosulfate the following night (Syafaat et al., 2019). Subsequently, the water was filtered using a filter membrane and through Ultraviolet light before being transferred to the 200 L volume of conical fiber tanks used for rearing the larvae. Before the larvae were stocked in the cone fiber tank, 15 mg/L of erythromycin was added, which is equal to three grams in each tank (Gunarto et al., 2021). Antibiotics were applied earlier before larvae stocked aimed to cut the vertical transmission of pathogenic

bacteria from the broodstock to their larval and horizontal transmission from live food to the gut of larvae (usually *Vibrio* spp.), which mainly causes death in mud crab larvae. Furthermore, the tanks were sufficiently aerated to supply oxygen to the larvae. The *S. tranquebarica* larvae, seen swimming on the surface of the water when freshly hatched and in healthy condition, were put into cone fiber tanks at an abundance of 80 ind/L. From the first to the seventh day, rotifers, *Brachionus* spp. at the density of 20 ind/mL enriched with highly unsaturated fatty acids (HUFA) at concentrations of 100 mg/L (DHA Selco, INVE Aquaculture, Salt Lake City, UT, USA). Kotani (2017) was fed to the larvae. Moreover, starting on the seventh day of the rearing, the larvae were fed with *Artemia* nauplii with a density of 0.5 ind/mL enriched with 500 mg/L HUFA for six hours. Conversely, the larvae were exclusively fed *Artemia* nauplii at a density of 1 ind/mL on the tenth day. Finally, the number of *Artemia* nauplii increased to 1–2 ind/mL in the megalopa stage until they developed to the crablet stage. In rearing water, ammonia, nitrites, and total organic matter (TOM) were measured by collecting 300 mL of water from each replication tank. Those parameters were analyzed according to Clesceri et al. (2005). Meanwhile, YSI Pro Plus multiparameter water quality (RoHS CE WEEE C-Tick VCCI FCC IP-67 1-meter drop test Assembled in the USA) is used to measure dissolved oxygen (D.O.), pH, and water temperature.

Probiotic treatment

The probiotic containing *B. subtilis* was produced by the Research Institute for Brackish Water and Fisheries Extension, Maros, where the *B. subtilis* isolated from seaweed, *K. alvarezii*, which grows in the coastal area in Laikang, Jeneponto regency, South Sulawesi, Indonesia. That probiotic is made in powder form with a *B. subtilis* density of 10^8 CFU/g. This probiotic was administered in the mud crab larvae rearing at the following doses A) 2.5 mg/L, B) 5.0 mg/L, C) 7.5 mg/L, and D) 0.0 mg/L (control without probiotic application) by giving the probiotic powder at 0.5, 1.0, 1.5, and 0 g, respectively per 200 L of rearing water. The probiotics need to be activated before being added to the larvae-rearing tank. The probiotic powder was placed in a small basin with a volume of three liters, then filled with two liters of sterile seawater at a salinity of 30 ppt and aerated overnight. On the next day, the aeration stopped. The solution was settled for one hour to let the particle sink. Then, only a clear solution is added to the mud crab larvae cultures. The probiotic administration began on the seventh day of larva rearing and continued with the interval of three days until the larvae

reached the first instar crablet stage (about 24–28 days).

The water exchange is as much as 10% of the total water volume in larvae rearing tanks and is first conducted on 12 days of rearing; furthermore, water exchange is continuous every three days later in the same volume until larvae growth to the megalopa stage. Again, in the megalopa stage, the water exchange was increased to 15% of the total volume every three days until megalopa developed into the crablet stage. The probiotic is also added to maintain probiotics in larval and megalopa rearing tanks as the dosage was determined to treat every after-exchange water in the larval and megalopa rearing tank. The sampling time for profiling the microbiota was conducted when larvae reached the megalopa stage at DOC 21 (first replication) and at DOC 22 (second replication) with the reason that the megalopa stage is the end stage before larvae develop to the crablet stage.

Monitoring of biological and chemical parameters

Sample collection

16S rRNA amplicon sequencing was carried out to elucidate microbial abundances in megalopa and media for larvae rearing treated with probiotics at different doses. The samples for the analysis were prepared as follows: First, megalopa extraction was conducted by taking ten individuals of megalopa from each replication of probiotic treatment and control tank. Then, the megalopas from each treatment were put in each sterile microtube, crushed, and extracted using the cTAB dTAB DNA extraction kit (IQ2000, GeneReach Biotechnology, Taichung, Taiwan). Then, the pelleted DNA was dissolved in 200 mL T.E. buffer (10 mM Tris-HCl, 1 mM EDTA, pH 8.5). The sample extract megalopa from each treatment was determined as A, B, C, and D. Each sample had two replications.

Genomic bacterial DNA from seawater samples was prepared by filtering one liter of water samples from the larvae-rearing tank in each treatment. The water was filtered using plankton net no. 400 with mesh size 37 μ m to eliminate rotifer from the rearing water. The rotifer-free water was then filtered using Whatman filter paper Purabind 045, mesh size 0.45 micrometer, and diameter 47 mm. The filter paper was extracted following the ZymoBiomix DNA miniprep kit extraction procedure. The sample of extract water media for megalopa rearing from each treatment was determined as E, F, G, and H. Each sample had two replications.

PCR and 16S rRNA amplicon sequencing

Genomic DNA from megalopa and water samples were trans-

ported to the Genetics Science Laboratory (Jakarta, Indonesia) for the 16S rRNA amplicon sequencing in a PE250 Illumina sequencing platform. A DNA template with a concentration of 1 ng/ μ L was obtained by diluting the sample with sterile water after monitoring its concentration and purity on 1% agarose gels and measuring it using Nanodrop. The bacterial 16S rRNA gene's V3-V4 region was amplified using primers 341F (5'-CCTAYGGGRBGCASCAG-3') and 806R (5'-GGACTACN-NGGGTATCTAAT-3'; Hjelmsø et al., 2014) with the barcode. The Phusion® High-Fidelity PCR Master Mix (New England Biolabs, Ipswich, MA, USA) was used for all PCR reactions, with a volume of 20 μ L per reaction, under the following conditions: 0.4 μ L TaqHiFi polymerase, 1 μ L template cDNA, 4.0 μ L 5 \times buffer, 0.8 μ L forward and reverse primer (5 μ M), 2 μ L dNTPs (2.5 mM), and 11 μ L sterile water. The following were the amplification conditions: there were 25 cycles following pre-denaturation for two minutes at 95 °C: 30 seconds of denaturation at 95 °C, 30 seconds of annealing at 55 °C, 30 seconds of extension at 72 °C, and 5 minutes of final extension at 72 °C (Sun et al., 2015). Equivalent densities of the PCR products were combined. Before sequencing the 16S rRNA amplicon, the mixed PCR products were purified using the Qiagen Gel Extraction Kit (Qiagen, Hilden, Germany). Then, the library was prepared using the NEBNext® Ultra™ DNA Library Prep Kit for Illumina, and the quantification was done using Qubit and Q-PCR.

Sequence data processing

Samples were assigned paired-end readings based on their distinct barcodes, which were then shortened by removing the primer sequences and barcode. To get raw tags, FLASH version V1.2.7 was used to integrate paired-end reads. To get raw tags, FLASH version V1.2.7 was used to integrate paired-end reads (Magoč & Salzberg, 2011). The raw tags were filtered using QIIME (V1.7.0) to produce clean, high-quality tags (Caporaso et al., 2010). Using the UCHIME technique, the tags were compared with the reference database (gold database; Edgar et al., 2011) to identify sequence chimeras. Next, the chimeric sequences were eliminated to detect chimera sequences (Haas et al., 2011) to get effective tags. Using Uparse version v7.0.1001, comparable operational taxonomic units (OTUs) were assigned to sequences with ≥ 97 percent similarity (Edgar, 2013). For each representative sequence, Mothur software was performed against the SSUrRNA database of SILVA Database (SILVA version 128, <http://www.arb-silva.de/>; Wang et al., 2007) for the annotation of species at each taxonomic rank (species, genus, order, family,

kingdom, phylum, class, threshold: 0.8–1; Quast et al., 2013). The MUSCLE version 3.8.31 was used to determine the phylogenetic relationships of all OTU representative sequences (Edgar, 2004) and was employed to quickly compare several sequences. The OTU abundance data was standardized by assigning a standard sequence number to the sample with the fewest sequences. Based on the output normalized data, further analyses of beta and alpha diversity were carried out. Using indices like Chao1, Shannon, and Simpson, Alpha diversity was used to measure the species diversity complexity for a sample. With QIIME (version 1.7.0), all these indices in our samples were computed, and R software (version 2.15.3) was used to visualize the results including clustering of dissimilarity values of bacterial relative abundance using the complete linkage clustering method. Furthermore, the changes in samples' species complexity, as well as those of individual samples and treatments, were assessed using the beta diversity analysis. QIIME was used to determine the beta diversity on weighted and unweighted Unifrac (version 1.7.0).

Monitoring total bacteria and total *Vibrio* spp.

Bacterial analysis was conducted by observing total bacteria on tryptic soy agar (TSA) media, while the total *Vibrio* test utilized thiosulfate citrate bile salt sucrose agar (TCBSA) media (1). From each replication tank, a 50 mL water sample was taken in a sterile dark bottle for analysis. Subsequently, a 1 mL water sample was mixed with 9 mL saline solution (0.85% (w/v) NaCl) and serially diluted four times (10^{-1} ; 10^{-2} ; 10^{-3} ; 10^{-4}). For the TCBSA plate medium, 100 μ L of the water sample without dilution and with the first dilution (10^{-2}) was spread. The same procedure was followed for sample inoculation in TSA media using the third and fourth dilutions (10^{-3} and 10^{-4}). The samples were evenly spread across the surface with a sterile glass spatula and then incubated for 48 hours. Manual calculations were performed on bacterial colonies grown in TCBSA (total *Vibrio*) and TSA media (total bacteria) using the formula:

$$P = \frac{Q}{T} \times \frac{1}{S} \times \frac{1}{V} \quad (1)$$

P = bacterial population (CFU/mL), Q = total number of bacteria in one dilution level (colony), T = number of plates used, S = dilution rate, V = plate sample volume (0.1 mL; Buller, 2004).

Monitoring of larvae population

Larvae samples were taken on three distinct surfaces in each

replication tank using a 100 mL bowl to monitor the larvae population. The larval population density per liter was calculated from the mean larval number per 100 mL. In each replication tank, the megalopa population was observed using a 1,000 mL bowl placed on three different surfaces. The mean megalopa number per 1,000 mL indicated the megalopa population per liter. The number of crablets produced per replication tank in each treatment was also monitored after the crab was harvested.

Data analysis

Data on the relative abundance of microbiota from the amplicon sequencing in each treatment were made graphically and analyzed descriptively. We performed alpha and beta diversity as well as hierarchical clustering to understand bacterial community composition (BCC) among samples. The larval population and crablet production data in each treatment were subjected to logarithmic transformation. Furthermore, analysis of variance was used to compare and examine the data for the fully randomized design patterns. If there was a difference between the treatments, the least significant difference test (LSD test) was used. The statistical test was conducted using the SPSS (Statistical Product Service Solution) program package 23. In comparison, the data on water quality (ammonia, nitrite, TOM) from each treatment were analyzed descriptively.

Results

Cluster samples and bacterial diversity

Species richness varied in the range of 269 to 1,052 OTUs. Despite relatively high species richness, each replicate within the treatment had twice a different number of species richness (Table 1). A hierarchical clustering for each sample based on the dissimilarity values of bacterial relative abundance showed four clusters (Fig. 1). BCC in water samples from all treatments clustered together. They were also separated from the BCC of megalopa samples at any dose of probiotics. Furthermore, different clustering patterns within similar treatments of replicate samples, except treatment C samples indicated that the replicate samples had relatively high dissimilarity value (> 0.7; Fig. 2).

Bacterial community profile

The heatmap displaying the distribution of the top 35 microbiota genera over megalopa’s entire body and the water media for megalopa rearing after being treated with different dosages of probiotics containing *B. subtilis* is shown in Fig. 3. The

Table 1. Alpha diversity index of the relative abundance of microbiota in megalopa and water for megalopa rearing after being treated with different doses of probiotics (A, B, C, D)

Samples	Observed_species	Chao1	Shannon	Simpson
A1	300	358.882	0.677	0.116
A2	844	1,030.756	1.758	0.323
B1	551	619.578	1.664	0.305
B2	269	290.577	4.876	0.932
C1	535	636.629	1.401	0.267
C2	910	1,051.500	0.959	0.152
D1	937	988.663	6.081	0.946
D2	571	636.317	1.889	0.336
E1	522	752.682	3.951	0.845
E2	1,052	1,286.377	3.922	0.805
F1	461	618.898	3.812	0.842
F2	935	1,188.055	4.173	0.855
G1	469	518.565	4.339	0.882
G2	791	1,045.159	1.863	0.383
H1	527	590.029	4.348	0.889
H2	755	968.481	4.116	0.865

A1 and A2, megalopa in 2.5 mg/L; B1 and B2, megalopa in 5.0 mg/L; C1 and C2, megalopa in 7.5 mg/L; D1 and D2, megalopa in 0.0 mg/L; E1 and E2, water at treatment 2.5 mg/L; F1 and F2, water at treatment 5.0 mg/L; G1 and G2, water at treatment 7.5 mg/L; H1 and H2, water at treatment 0.0 mg/L.

composition of microbiota in megalopa and the water media at the highest abundance is defined as (+3) and at the lowest abundance is described as (-3). The data showed that the highest abundance of microbiota in the whole body of Megalopa with a value between +2 and +3 includes *Raistonia* found in samples of A1, C1, C2, and D2. *Pseudomonas* in a sample of A2, *Megaspaera* found in a sample of B1, and *Enterobacter*, *Corynebacterium*, *Cutibacterium*, *Streptococcus*, *Enhydrobacter*, *Micrococcus* found in a sample of B2. *Oceanospirillum*, *Marinibacter*, *Halomonas*, *Rothia*, *Methylolligellaceae*, *Photobacterium* found in sample of D1. While the lowest abundance of microbiota in the whole body of Megalopa with the value -1 to -2 found in samples of A1, A2, B1, C1, C2, and D2 includes the genera of *Ruegeria*, Saprospiraceae, OM43_clade, *Phaeodactilobacter*, and *Salinhabitants*.

The highest abundance of microbiota in the water media with values of +2 to +3 includes the genera of *Bacillus*, *Lysinibacillus*, and *Acinetobacter* found in samples of G2. While *Pseudohongiella* in a sample of E1, OM43_clade in a sample of E2, *Alteromonas*, OM43_clade in a sample of F1, *Coxiella*, *Ro-*

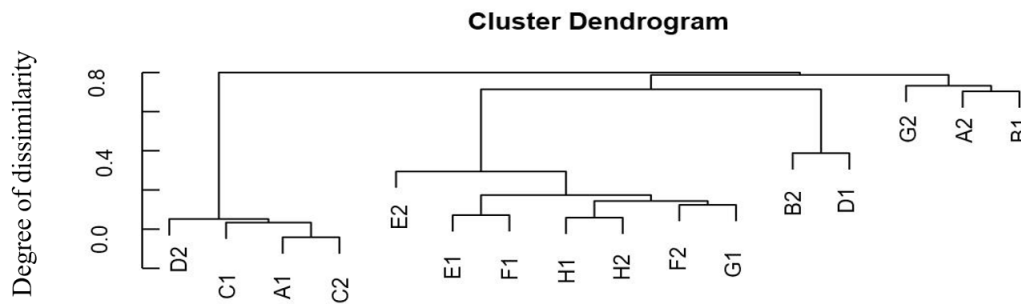


Fig. 1. Cluster dendrogram of the abundance of microbiota in water media for larvae rearing and in megalopa after being treated with different doses of probiotics (A, B, C, D). A1 and A2, megalopa in 2.5 mg/L; B1 and B2, megalopa in 5.0 mg/L; C1 and C2, megalopa in 7.5 mg/L; D1 and D2, megalopa in 0.0 mg/L; E1 and E2, water at treatment 2.5 mg/L; F1 and F2, water at treatment 5.0 mg/L; G1 and G2, water at treatment 7.5 mg/L; H1 and H2, water at treatment 0.0 mg/L.

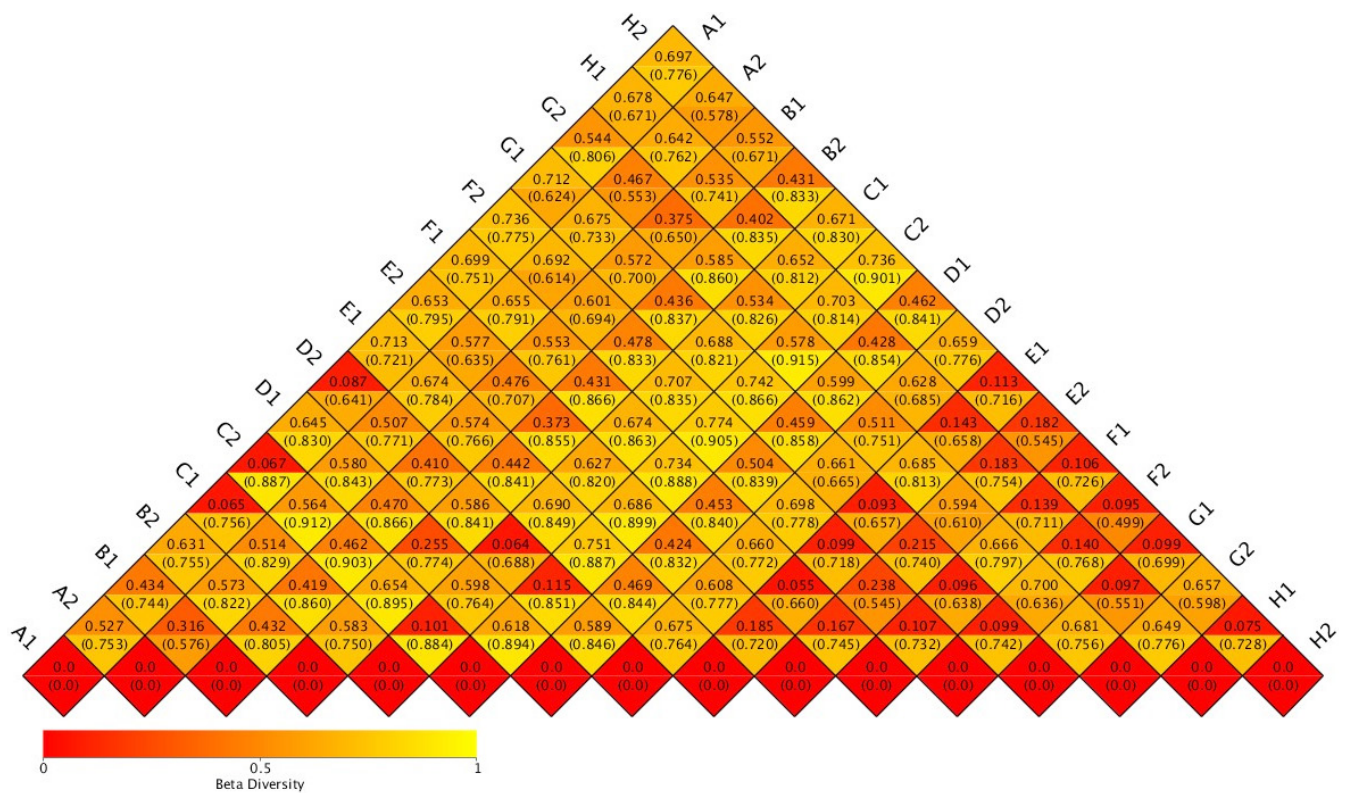


Fig. 2. Heatmap of beta diversity index of the relative abundance of bacteria in megalopa and water media for rearing megalopa after being treated with different doses of probiotic (A, B, C, D). A1 and A2, megalopa in 2.5 mg/L; B1 and B2, megalopa in 5 mg/L; C1 and C2, megalopa in 7.5 mg/L; D1 and D2, megalopa in 0 mg/L; E1 and E2, water at treatment 2.5 mg/L; F1 and F2, water at treatment 5 mg/L; G1 and G2, water at treatment 7.5 mg/L; H1 and H2, water at treatment 0 mg/L.

seibacillus, *Phaeodactylibacter*, *Salinihabitans*, *Pseudohongiella*, and *Halioglobus* in the sample of F1, F2, G1. The *Vibrio* showed low abundance with the value -1 to -2 found in samples of A1, A2, B1, C1, C2, E2, F2, and G2.

Total bacteria and total *Vibrio* spp.

The population of *Vibrio* sp. and the total bacteria in the megalopa stage are shown in Fig. 4. It appears that the lowest *Vibrio* sp. population was found in treatment C (7.5 mg/L), although

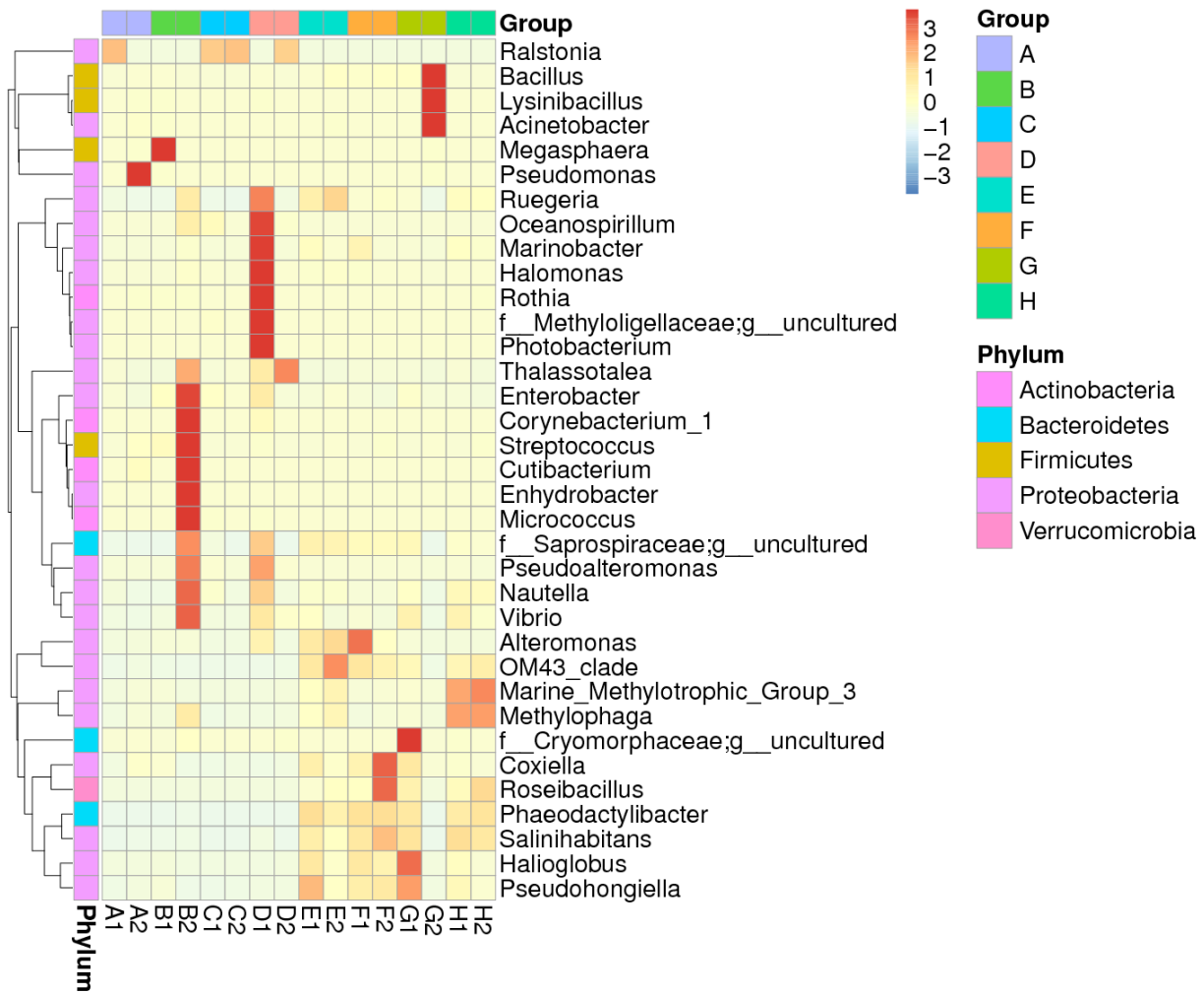


Fig. 3. Heatmap of the abundance of the top 35 genera of microbiota in the whole body of megalopa and in the water media for megalopa rearing after being treated with different doses of probiotics. A1 and A2, megalopa in 2.5 mg/L; B1 and B2, megalopa in 5.0 mg/L; C1 and C2, megalopa in 7.5 mg/L; D1 and D2, megalopa in 0.0 mg/L; E1 and E2, water at treatment 2.5 mg/L; F1 and F2, water at treatment 5.0 mg/L; G1 and G2, water at treatment 7.5 mg/L; H1 and H2, water at treatment 0.0 mg/L.

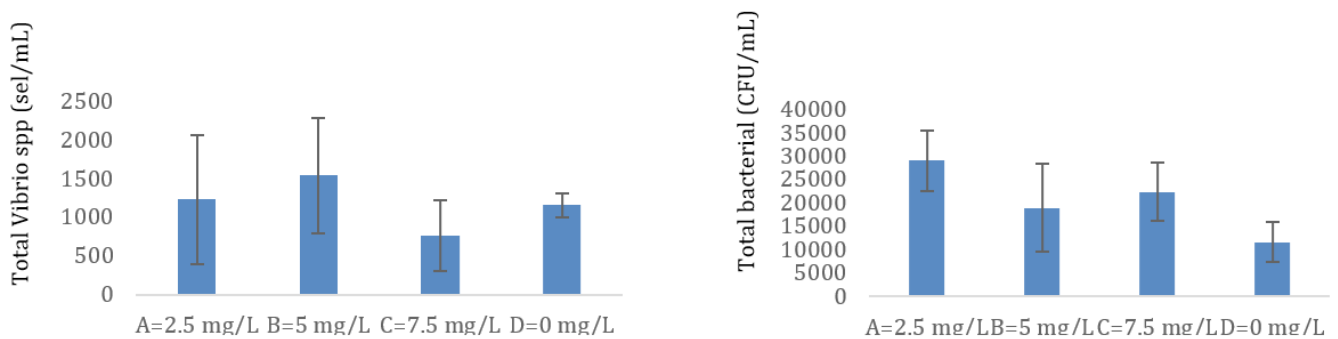


Fig. 4. Total *Vibrio* (A) and total bacteria (B) in the water media for larvae rearing after being treated with different doses of probiotics. A, 2.5 mg/L; B, 5.0 mg/L; C, 7.5 mg/L; D, 0.0 mg/L.

the total bacteria in treatment C was not the highest. The highest total bacteria were in treatment A (2.5 mg/L), and the lowest total *Vibrio* spp. did not occur in treatment A. The lowest total bacteria are in treatment D. The ratio of total *Vibrio* spp. to total bacteria was higher in control (0.1), compared to the treatment tested, namely of 0.035 (treatment C), 0.088235 (treatment B), and 0.033333 (treatment A).

Water quality parameters

The salinity for larval rearing was 30 ppt, D.O. in the range of 5.2 mg/L to 6.7 mg/L, water pH: 8.1 to 8.4, and water temperature in the tank 27.5 °C to 30.2 °C. The ammonia concentration decreased at 10.3% (A), 15.23% (B), and 6.48% (C) compared to control (D) in the zoea stage. In contrast, the ammonia concentration significantly reduced to 3.45% (B) at the megalopa stage compared with the control treatment (Fig. 5A). All treatments' nitrite concentration at the zoea stage was relatively low, reaching 0.01–0.07 mg/L. At the megalopa stage, all treatments' nitrite concentration was increased (Fig. 5B). The TOM in the zoea stage decreased to

23.63% and 19.40% in treatments B and C, while at the megalopa stage, the TOM decreased to 4.34% only in treatment B, compared with the D treatment (control) (Fig. 5C).

Larva and megalopa populations also crablet production

The larvae population declined from zoea-1 to zoea-5. On the seventh and seventeenth days, the larvae in treatment C were significantly larger populations ($p < 0.05$) than those in treatments A and D, while on Day 17, a considerably larger population ($p < 0.05$) for the larvae in treatment B compared to the larvae in the control treatment. On day 23, treatments B and C had more megalops than treatments D. Treatments B and C yielded significantly ($p < 0.05$) more crablets than treatments A and D after crablet harvested from the tanks at the Crablet day 17 (Table 2).

Discussion

The application of different doses of probiotics, containing *B. subtilis* at the doses of 2.5 mg/L, 5 mg/L, 7.5 mg/L, and 0 mg/L

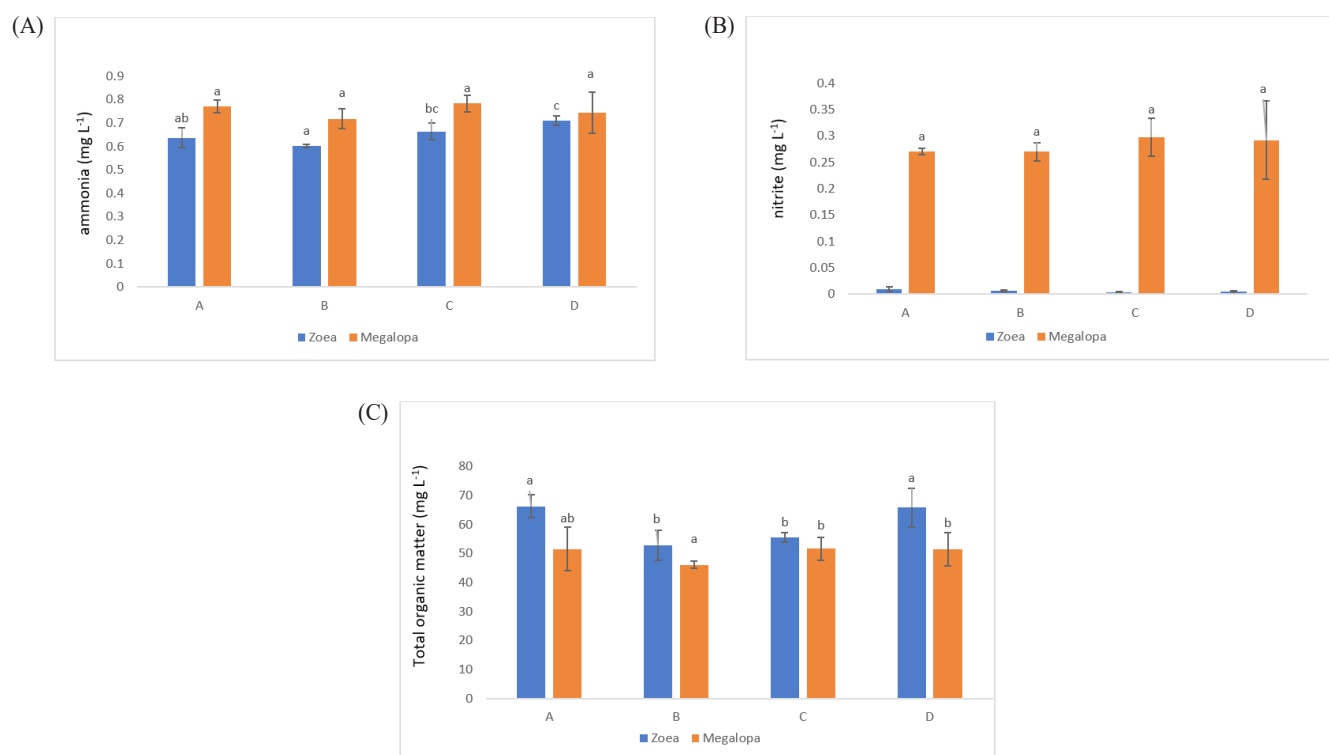


Fig. 5. The ammonia (A), nitrite (B), and total organic matter (TOM) (C) concentration in the water media for larvae rearing when larvae at the zoea and megalopa stage after being treated with different doses of probiotics. A, 2.5 mg/L; B, 5.0 mg/L; C, 7.5 mg/L; D, 0.0 mg/L. Values in the same color column without the same superscript letters are significantly different ($p < 0.05$)

Table 2. Development of mud crab *Scylla tranquebarica* larvae cultured with different doses of probiotics

Treatments (probiotic in mg/L)	Larvae stocking density (individuals/L)	Larvae population and crablet production			
		DOR 7	DOR 17	DOR 23	Crablet D15 prod/tank
A, 2.5	80	46.67 ± 8.02 ^a	14.67 ± 3.51 ^a	Z5:8;M:2	174 ± 1.41 ^a
B, 5.0	80	57.33 ± 8.96 ^{ab}	25.67 ± 4.93 ^b	Z5:8;M:2	225 ± 2.82 ^b
C, 7.5	80	69.34 ± 12.4 ^b	26.00 ± 3.60 ^b	Z5:6;M:4	220 ± 16.97 ^b
D, 0.0	80	46.33 ± 5.51 ^a	14.00 ± 2.64 ^a	Z5:9;M:1	172.5 ± 14.8 ^a

Values in the same column without the same superscript letters are significantly different ($p < 0.05$)
DOR, day of rearing; Z5, zoea-5; M, megalopa.

in this research did not dramatically affect BCC in water samples. It was indicated by a low β -diversity of the bacterial community in the water samples (Table 1). We supposed that the viability and adaptability of the probiotics *B. subtilis* was low as it was shown only one sample (G2) which contained the highest dose of *B. subtilis*. Our finding is similar to Amin et al. (2023). The microbiota, such as *Ralstonia*, highly increases population mostly at the megalopas reared with the addition of probiotics at 2.5 mg/L and 7.5 mg/L and control (Figs. 3 and 4). It was grouped in the first cluster (Fig. 1), where *Ralstonia* spp. is 90% dominant in these megalopas, and it was impacted to the lowest of *Vibrio* spp. population in megalopa. *Ralstonia* is a bacterium that can survive in highly purified water and disinfectant. It can be a used carbon source; therefore, bacteria can be a candidate for bioremediation (Adley et al., 2005). This activity may also cause improved water quality in larvae-rearing tanks. Besides that, *Bacillus* is also highly abundant in water media for megalopa rearing (sample G2) and the lowest of the *Vibrio* spp. population. All of them were impacted to the highest larvae survival in treatment C and ended with higher crablet production in treatment C.

In treatments B and C, applying probiotics at dosages of 5 mg/L and 7.5 mg/L means higher levels of beneficial bacteria were added to the larvae-rearing tank in those treatments. Reducing the growth and proliferation of pathogenic bacteria in the stomach larvae can be achieved by consuming high amounts of specific types of helpful bacteria (Buruiană et al., 2014), such as *B. subtilis* in the present study. That means megalopa in treatments B and C consumed a higher number of *B. subtilis* compared to the megalopa in treatments A and D, since the beginning of probiotic application have seen that the zoea population was higher in treatment B and C compared to treatment A and D and finally resulted in higher crablet production in treatment B and C (Table 2). *Acinetobacter* and *Lysinibacillus* also increased significantly in the water after being treated

with probiotics at 7.5 mg/L. *Phaeodactylibacter*, *Salinhabitans*, *Halioglobus*, and *Pseudohongiella* distributed in all water media for megalopa rearing are applied with different dosages of probiotics (Fig. 3).

The diversity of microbiota populations in crab intestines is dominated by *Bacteroides*, *Tenericutes*, *Cyanobacteria*, and unknown bacteria (Li et al., 2016). Also, it was reported *Firmicutes* are absent in the intestines of sick crabs. However, *Cyanobacteria* is present. Meanwhile, in healthy crabs, *Cyanobacteria* are absent. In crabs from nature, the total content of bacteria in their intestines is more than 3–4 times the amount in sick crabs. In addition, the microbiota associated with crabs, for example, those in their intestines such as *B. subtilis* and *B. pumilus* are potential probiotics and can increase the immunity levels of crabs (Sahandi et al., 2019; Wu et al., 2014). Furthermore, the dominance of microbiota in shrimp, crab, and oyster cultured in ponds in Ganyu, Eastern, China dominated by Phylum *Proteobacteria*, *Chloroflexi*, *Actinobacteria*, *Firmicutes*, and *Acidobacteria* where water comes from the sea (Li et al., 2016). While in the intensive and semi-intensive pond in Indonesia, the halophilic bacteria (*Alteromonas*, *Erythrobacter*, *Halomonas*, *Pseudoalteromonas*, *Salegentibacter*, *Sulfitobacter*, and *Psychrobacter*) is dominant (Alfiansah et al., 2018). In the present study, the water used for larvae rearing was also from the coastal waters in Barru Regency, South Sulawesi, Indonesia. Based on the sequencing analysis, the microbiota in the whole body of megalopa and the water media for megalopa rearing was dominated by *Proteobacteria*, *Actinobacteria*, and small portions of *Firmicutes*, *Bacteroidetes*, and *Verrucomicrobia*. *Gammaproteobacteria* is the primary class in the Phyla of *Proteobacteria* with members including *Aeromonadaceae*, *Pseudomonadaceae*, *Enterobacteriaceae*, and *Xanthomonadaceae* (Li et al., 2016). *B. subtilis* belongs to phylum *Firmicutes*, thus in the water media for megalopa rearing, the population of *Bacillus* spp. was highest due to the application of probiotics at the highest dose (7.5 mg/L).

The efficacy of the bacteria, not their concentration, determines the potency of probiotic bacteria against pathogenic bacteria (Sahandi et al., 2019). In contrast to the present study, dosages of 5 mg/L to 7.5 mg/L resulted in higher crablet production than dosages of 2.5 and 0 mg/L. The higher concentration of probiotic bacteria applied in the larvae-rearing tanks affected the higher crablet production. In *Lactobacillus sakei*, the difference in secreted organic acid concentration determines the possible inhibitory level. The antibacterial activity of *B. subtilis* is mainly influenced by its ability to produce antibiotics, primarily peptides (Olmos, 2014; Stein, 2005).

In both human and veterinary medicine, erythromycin is a commonly used antibiotic that is effective against a broad range of bacteria. Erythromycin is also used in intensive livestock and aquaculture operations to promote growth and feed efficiency (Machado & Soares, 2019). The application of erythromycin in the present study aims to cut vertical transmission of pathogenic bacteria from the mud crab broodstock to their larvae. From our experiences, even though they have used erythromycin on the first rearing day, mass larvae mortality often occurs on days 10–12 caused by bacterial diseases. Therefore, applying probiotics, *B. subtilis*, from the seventh day of rearing could be initiated with the interval probiotic application every three days, which could finally increase the population of *B. subtilis* in the larvae-rearing tank. Hopefully, it can prevent the development of pathogenic bacteria that often cause the larvae to die at day up to 10 days of rearing. Adding probiotic bacteria to the larvae-rearing medium can suppress the growth of *Vibrio anguillarum* in water media for larvae-rearing (Nogami & Maeda, 1992).

Additionally, the *Bacillus* probiotics can prevent the proliferation of pathogenic bacteria in the larval intestine (Buruiană et al., 2014), increase the microbiota population, and influence digestion, feed absorption, and assimilation (Ayisi et al., 2017). Unfortunately, the *B. subtilis* was unseen in the whole body of megalopa and water media by NGS sequencing analysis in the present study. However, the heatmap of the abundance of the top 35 genera of microbiota in the whole body of megalopa and in the water media for megalopa rearing after being treated with various doses of probiotics only showed *Bacillus* spp., which is abundant in water media, G2 at the dose's probiotics application of 7.5 mg/L (Fig. 3). Whereas in other doses of probiotics treatments, the *Bacillus* spp. is lower density detected. The addition of antibiotics such as erythromycin may affect the microbiota composition and density in the whole body of megalopa and

the water media of megalopa rearing in the present research. It was proven that the *Bacillus* spp. only seen a higher population in the water media of G2. However, the highest concentration (7.5 mg/L) of probiotic application was applied in the treatment of G and C (samples of G1, G2, C1, and C2). Therefore, those samples could have a higher density of *Bacillus* spp. Contrary, on G1, C1, and C2 samples unseen of *Bacillus* spp. presence. Furthermore, the most improvement in water quality especially for the ammonia and TOM was found in treatments B and C as a result of probiotics working in those treatments, and it was confirmed that treatments B and C have higher crablet production compared to those treatments A and D. Addition, an application of antibiotics affects reduce to the gut microbial diversity and composition (Patangia et al., 2022). *B. subtilis* will experience competitive stress when antibiotics like erythromycin are present, but they have systems to survive germs that develop resistance (Liu et al., 2018).

V. harveyi, is pathogenic to marine and inland fisheries biota (Alfiansah et al., 2018; Sahandi et al., 2019; Yilmaz et al., 2022), including larvae and adult mud crab (Aftabuddin et al., 2013; Poornima et al., 2012 ; Talib et al., 2017). Earlier researchers reported that *V. harveyi* attacks crab larvae by infecting the hemolymph and hepatopancreas (Poornima et al., 2012). Due to the open circulatory system in the crab, all parts of the body of the crab might have been attached to pathogenic bacteria (Zhang et al., 2020). Therefore, in this study, all parts of the megalopa (the whole body of megalopa) were used to observe the microbiota, including *Vibrio* spp. population by crushing to make raw DNA for sequencing analysis. Furthermore, the accumulation of organic material in the larvae-rearing tanks will trigger the increasing *V. harveyi* population in the water. Therefore, the raw DNA from the water for megalopa rearing was applied with different probiotic doses to observe the microbiota, including *Vibrio* spp. population in the present research. In addition, the *Vibrio* spp. in the present study detected with the NGS analysis showed a high (value +2), it was seen in samples of B2, while in samples of D1, G1, H1, and H2, the value was lower, approximately only +1 (Fig. 3). The other sample unseen the availability of *Vibrio* spp. That means treatments A and C are free from *Vibrio* spp. However, B2 is dense with *Vibrio* spp, but the larvae successfully developed into the crablet stage. It means an outbreak of *Vibrio* spp, which mainly causes larvae mortality in rearing tanks, is not incurred. Bacteria such as *V. harveyi* can change from non-virulent to virulent when they reach a certain density level or a dramatic environmental

change (Zhou et al., 2012). Earlier researchers reported that *B. subtilis* could improve disease resistance, minimizing larval mortality caused by *V. harveyi* infection (Zokaeifar et al., 2012). Thus, applying probiotics containing *B. subtilis* bacteria is essential to eliminate *V. harveyi* infection and support the successful rearing of larvae to develop into the crablet stage.

Probiotics' effectiveness or efficacy in larvae could be due to probiotics' high intestine colonization capability, favorable development conditions, or larval resistance to foreign probiotics (Hlordzi et al., 2020). Therefore, *B. subtilis* supplementation in the current study may impact mud crab larvae's improved immune response and disease resistance. It was confirmed with earlier research that supplementation with *B. subtilis* will enhance growth performance, immune response, and disease resistance to pathogenic bacterial infections (Buruiană et al., 2014). Probiotic bacteria have been proven to promote digestive function by generating digestive enzymes, resulting in better digestion and absorption of food and, as a result, increased feed utilization efficiency (Ghosh et al., 2016). *B. subtilis* is found in the intestines of crabs and can be used as a probiotic. A density of 105 CFU/g will increase immunity against *V. parahaemolyticus* infection in mangrove crab larvae and *Scylla paramamosain* (Wu et al., 2014).

The present research applied the probiotic containing *B. subtilis* at doses of 2.5 mg/L to 7.5 mg/L. Based on the total count of bacteria soluble in the water by TSA media analysis, the density of total bacteria in treatments B and C were found to be 1.85×10^5 CFU/mL to 2.2×10^5 CFU/mL compared to 1.6×10^4 CFU/mL in the control tank. Furthermore, the ratio of total *Vibrio* spp. to total bacteria was lower in the treatment test compared to the control test, which means total bacteria including probiotics bacteria applied in the larvae rearing can suppress the *Vibrio* spp. population in the larvae-rearing tank. The ratio of total *Vibrio* spp. to total bacteria in the shrimp pond during culture can be used as an early warning system to indicate the pond is in a dangerous condition when the ratio value in the treatment pond is up more than 10% of the control value (Susianingsih et al., 2022). In the present study, the ratio of total *Vibrio* spp. to total bacteria in treatment tanks, namely 0.035 (treatment C), 0.088235 (treatment B), and 0.033333 (treatment A), all of them are far smaller compared to the control (0.1). The lowest *Vibrio* spp. population was found in treatment C (7.5 mg/L), although the total bacteria in treatment C was not the highest population. It shows that probiotics in treatment C effectively suppress the population of *Vibrio* spp. While the highest total bacteria were

found in treatment A (2.5 mg/L), unfortunately, the lowest total *Vibrio* spp. did not occur in treatment A. This means that the work of probiotics in treatment A is not as effective as the work of probiotics in treatment C. Other bacteria associated with water and crab larvae in treatment A may be responsible for it. The lowest total bacteria are in treatment D, it is appropriate because in treatment D there is no addition of probiotic bacteria (Fig. 4). Therefore, concentrations of probiotics at 5.0 mg/L to 7.5 mg/L are most effective in preventing the growth of the population of *Vibrio* spp. pathogenic in the larvae-rearing tanks. Treatments B and C produced higher populations of crablet ($p < 0.05$), in the amount of 225 ± 2.82 individuals/tank and 220 ± 16.97 individuals/tank, respectively. It was higher crablet production compared to the previous study, which was only 141.2 ± 34.1 individuals/tank using the application of erythromycin in their larvae rearing (Gunarto et al., 2021). The probiotic containing *B. subtilis*, presumably at a dose of 5.0 mg/L and 7.5 mg/L, produced the highest level capable of fighting harmful bacteria in mud crab larvae rearing, improving digestion in stomach larvae, and improving water quality for larvae rearing. Therefore, higher percentages of larvae successfully develop into the crablet stage.

During the zoea stage, the ammonia concentration in all probiotic treatments was lower concentration between 0.6 and 0.7 mg/L when compared to the control treatment, with the B treatment showing the lowest significance ($p < 0.05$). The ammonia concentration in all treatments was higher in the range of 0.7–0.8 mg/L during the megalopa stage due to the accumulation of organic material and other materials in the tank bottom. As larvae reach the megalopa stage, in other instances, the probiotics containing *B. subtilis* could have also accumulated more due to regular application in every three days. Regretfully, in the megalopa stage, the ammonia concentrations across the treatments did not differ significantly ($p > 0.05$). Because of excessive feed, the metabolism of the larvae, and the death of the rotifer and larvae in the rearing tank, *B. subtilis* works to metabolite ammonia produced from an accumulation of organic material. The first source of nitrogen from animal deaths or waste products is organic matter. *Nitrosomonas* and *Nitrobacter*, which are primarily involved in nitrification and occasionally denitrification, are responsible for nitrogen fixation (Liu et al., 2020). The process known as ammonification involves fungi or bacteria, such as *Bacillus* species, converting this organic nitrogen to ammonium (NH_4^+) and ammonia (NH_3). The process known as nitrification involves the conversion of ammonium to nitrites (NO_2^-) and subsequently to nitrates (NO_3^-), primarily by *Nitro-*

Somonas and *Nitrobacter* species, respectively. Subsequently, nitrate is converted to nitrogen gas (N₂) through a process known as denitrification, which eliminates bioavailable nitrogen and releases it back into the atmosphere (Bernhard, 2010). Through ammonification, nitrification, and denitrification, *Bacillus* species have contributed significantly to the nitrogen cycle. Certain bacteria, such as *B. subtilis*, use various forms of nitrogen, such as total ammonia nitrogen, N-NO₃, N-NO₂, and total Kjeldahl nitrogen, for their metabolism (Martínez-Córdova et al., 2015). This helps remove nitrogen from the water column. As a result, in comparison to a control treatment, the ammonia concentration at the zoea stage in the present study was lowered by 6%–15% (Fig. 5A). It is observed that the probiotic treatment has a lower nitrite concentration than the controlled treatment. They did not, however, differ significantly ($p > 0.05$; Fig. 5B).

The different forms of nitrogen in aquaculture wastewater can be eliminated by *Bacillus* species. Particulate matter and dissolved organic carbon accumulation are decreased by gram-positive bacteria. Both organic and inorganic carbon sources are used by heterotrophic bacteria as growth substrates. Because of this, they play a significant part in both the breakdown of organic matter and the creation of particulate food materials from dissolved organics (Padmavathi et al., 2012). *Bacillus* efficiently transforms organic matter into CO₂, which is then used as a carbon source by β - and γ -proteobacteria. In contrast, other bacteria convert most of the organic matter into slime or bacterial biomass (Mohapatra et al., 2013; Zorriehzahra et al., 2016). As a result of recycling nutrients in the water column and lowering sludge accumulation, *Bacillus* are primarily used in aquaculture to remove the organic matter load (Soltani et al., 2019). Unused food is frequently linked to organic matter loads in aquaculture. However, probiotic *Bacillus* stimulates appetite by raising fish's activity levels of digestive enzymes, which improves feed utilization and reduces waste generation (Hlordzi et al., 2020).

In the present research in comparison to the D treatment, the TOM concentration in the zoea stage was significantly lower ($p < 0.05$) in the B and C probiotic treatments. Additionally, it was lower by 19%–23.6% when compared to the control treatment. B treatment had a significantly lower TOM concentration in the megalopa stage (Fig. 5C). Finally, the probiotics containing *B. subtilis* added during larval rearing have been shown to improve water quality (ammonia, nitrite, and TOM) and have an impact on higher crablet production in treatments B and C. It was conformed with the Kuebutornye et al. (2019) and Olmos

(2014) that probiotics containing *B. subtilis* added in larval rearing could improve water quality.

The LC-50 of unionized ammonia for zoea-1 and zoea-5 was at 4.05 mg/L to 6.64 mg/L after 24 hours (Neil et al., 2005). The nitrite in the zoea stage was in the range of 0.004 mg/L to 0.009 mg/L and increased in the megalopa stage, with the highest concentration at 0.21 mg/L to 0.35 mg/L in treatment D (control). The safe limits of nitrite in the larvae of Z1 to Z5 were in the range of 2.5 mg/L to 6.9 mg/L (Seneriches-Abiera et al., 2007). Thus, ammonia and nitrite concentrations in the present study still support larvae development, which means the value was lower than the limits to support larvae survival.

Conclusion

The application of probiotics containing *B. subtilis* in the mud crab, *S. tranquebarica* larvae rearing at the doses of 5 mg/L to 7.5 mg/L with the application started on day seventh of larval rearing with intervals every three days successfully to suppress *Vibrio* spp. development and improving water quality in larvae rearing, furthermore its impacts to the higher larvae survival rate and finally can improve *S. tranquebarica* crablet production significantly.

Competing interests

No potential conflict of interest relevant to this article was reported.

Funding sources

This research was supported by the Aquaculture Research Program DIPA 2020, MAK 2427.007.001.051.B.524111, Research Institute for Brackish Water Aquaculture and Fisheries Extension, Maros, and Ministry of Marine Affairs and Fisheries of Republic Indonesia.

Acknowledgements

The authors would like to thank the Research Institute for Brackishwater Aquaculture and Fisheries Extension (RIBAFE), the National Research and Innovation Agency, and the Indonesia Endowment Fund for Education (LPDP) of the Ministry of Finance Republic of Indonesia through the RIIM Program Phase 2.

Availability of data and materials

Upon a reasonable request, the datasets of this study can be

available from the corresponding author.

Ethics approval and consent to participate

This study conformed to the guidelines of animal ethical treatment for the care and use of experimental animals. This research has followed the standard operating procedure of the mud crab, *Scylla* spp. experimental of Research Institute for Brackishwater Aquaculture and Fisheries Extension, Marine Fisheries Research and Resources Agency Republic of Indonesia.

ORCID

Gunarto Gunarto <https://orcid.org/0000-0002-3546-5401>
 Yustian Rovi Alfiansah <https://orcid.org/0000-0002-1640-9834>
 Muliani Muliani <https://orcid.org/0000-0001-7646-5494>
 Bunga Rante Tampangalo <https://orcid.org/0000-0002-1999-4039>
 Herlinah Herlinah <https://orcid.org/0000-0002-4037-8142>
 Nurbaya Nurbaya <https://orcid.org/0000-0003-3392-8203>
 Rosmiati Rosmiati <https://orcid.org/0000-0002-3289-389X>

References

- Adeley CC, Ryan MP, Pembroke JT, Saieb FM. *Ralstonia pickettii*: biofilm formation in high-purity water. In: McBain AJ, Allison DG, Pratten J, Spratt DA, Upton M, Verran J, editors. Biofilms: persistence and ubiquity. Cardiff: Biofilm Club; 2005. p. 151-62.
- Aftabuddin S, Sikder MNA, Rahman MA, Zafar M. Antibiotic resistance of *Vibrio* bacteria isolated from mud crab *Scylla serrata* of Chakoria coast, Bangladesh. Res J Pharm Biol Chem Sci. 2013;4:325-34.
- Alfiansah YR, Hassenrück C, Kunzmann A, Taslihan A, Harder J, Gärdes A. Bacterial abundance and community composition in pond water from shrimp aquaculture systems with different stocking densities. Front Microbiol. 2018;9:1-15.
- Amin M, Pramujisunu Y, Lamid M, Cahyoko Y, Odeyemi OA, Ali M, et al. The fate of probiotic species applied in intensive grow-out ponds in rearing water and intestinal tracts of white shrimp, *Litopenaeus vannamei*. Open Agric. 2023;8:1-12.
- Ayisi CL, Apraku A, Afriyie G. A review of probiotics, prebiotics, and synbiotics in crab: present research, problems, and future perspective. J Shellfish Res. 2017;36:799-806.
- Bernhard A. The nitrogen cycle: processes, players, and human impact. Nat Educ Knowl. 2010;3:25.
- Buller NB. Bacteria from fish and other aquatic animals: a practical identification manual. Wallingford: CABI; 2004. p. 83-116.
- Buruiană CT, Profir AG, Vizireanu C. Effects of probiotic *Bacillus* species in aquaculture: an overview. Ann Univ Dunarea Jos Galati Fascicle VI Food Technol. 2014;38:9-17.
- Caporaso JG, Kuczynski J, Stombaugh J, Bittinger K, Bushman FD, Costello EK, et al. QIIME allows analysis of high-throughput community sequencing data. Nat Methods. 2010;7:335-6.
- Clesceri L, Greenberg A, Eaton A. Standard methods for the examination of water and wastewater. Washington, DC: American Public Health Association; 2005.
- Edgar RC. MUSCLE: multiple sequence alignment with high accuracy and high throughput. Nucleic Acids Res. 2004;32:1792-7.
- Edgar RC. UPARSE: highly accurate OTU sequences from microbial amplicon reads. Nat Methods. 2013;10:996-8.
- Edgar RC, Haas BJ, Clemente JC, Quince C, Knight R. UCHIME improves sensitivity and speed of chimera detection. Bioinformatics. 2011;27:2194-200.
- García-Medel DI, Angulo C, Escamilla-Montes R, Fierro-Coronado JA, Diarte-Plata G, Gámez-Jiménez C, et al. *Bacillus licheniformis* BCR 4-3 increases immune response and survival of *Litopenaeus vannamei* challenged with *Vibrio parahaemolyticus* IPNGS16. Aquac Int. 2020;28:2303-18.
- Ghosh AK, Bir J, Azad MAK, Hasanuzzaman AFM, Islam MS, Huq KA. Impact of commercial probiotics application on growth and production of giant freshwater prawn (*Macrobrachium rosenbergii* De Man, 1879). Aquac Rep. 2016;4:112-7.
- Gunarto, Herlinah. Level of crablet production in mangrove crab *Scylla paramamosain* with feeding enrichment using Hufa and vitamin C on larvae stages. J Ilmu Teknol Kelaut Trop. 2015;7:511-20.
- Gunarto, Sulaeman, Herlinah. The effect of limb-removing and placement-depth on the growth rate of mud crab juvenile, *Scylla tranquebarica*. IOP Conf Ser Earth Environ Sci. 2020;521:1-11.
- Gunarto, Tampangalo BR, Muliani. The application of erythromycin, elbayou, and Rica-1 probiotic in the rearing of *Scylla paramamosain* mud crab larvae development into the crablet stage. Thalass Int J Mar Sci. 2021;37:465-75.
- Haas BJ, Gevers D, Earl AM, Feldgarden M, Ward DV, Giannoukos G, et al. Chimeric 16S rRNA sequence formation

- and detection in Sanger and 454-pyrosequenced PCR amplicons. *Genome Res.* 2011;21:494-504.
- Hjelmsø MH, Hansen LH, Bælum J, Feld L, Holben WE, Jacobsen CS. High-resolution melt analysis for rapid comparison of bacterial community compositions. *Appl Environ Microbiol.* 2014;80:3568-75.
- Hlordzi V, Kuebutornye FKA, Afriyie G, Abarike ED, Lu Y, Chi S, et al. The use of *Bacillus* species in maintenance of water quality in aquaculture: a review. *Aquac Rep.* 2020;18:1-12.
- Kavitha M, Raja M, Perumal P. Evaluation of probiotic potential of *Bacillus* spp. isolated from the digestive tract of freshwater fish *Labeo calbasu* (Hamilton, 1822). *Aquac Rep.* 2018;11:59-69.
- Kotani T. Enrichment of rotifers and its effect on the growth and survival of fish larvae. In: Hagiwara A, Yoshinaga T, editors. *Rotifers: aquaculture, ecology, gerontology, and ecotoxicology*. Singapore: Springer; 2017. p. 47-62.
- Kuebutornye FKA, Abarike ED, Lu Y. A review on the application of *Bacillus* as probiotics in aquaculture. *Fish Shellfish Immunol.* 2019;87:820-8.
- Li LT, Yan BL, Li SH, Xu JT, An XH. A comparison of bacterial community structure in seawater pond with shrimp, crab, and shellfish cultures and in non-cultured pond in Ganyu, Eastern China. *Ann Microbiol.* 2016;66:317-28.
- Liu T, He X, Jia G, Xu J, Quan X, You S. Simultaneous nitrification and denitrification process using novel surface-modified suspended carriers for the treatment of real domestic wastewater. *Chemosphere.* 2020;125831.
- Liu Y, Kyle S, Straight PD. Antibiotic stimulation of a *Bacillus subtilis* migratory response. *mSphere.* 2018;3:e00586-17.
- Machado MD, Soares EV. Impact of erythromycin on a non-target organism: cellular effects on the freshwater microalga *Pseudokirchneriella subcapitata*. *Aquat Toxicol.* 2019;208:179-86.
- Magoč T, Salzberg SL. FLASH: fast length adjustment of short reads to improve genome assemblies. *Bioinformatics.* 2011;27:2957-63.
- Martínez-Córdova LR, Emerenciano M, Miranda-Baeza A, Martínez-Porchas M. Microbial-based systems for aquaculture of fish and shrimp: an updated review. *Rev Aquac.* 2015;7:131-48.
- Mohapatra S, Chakraborty T, Kumar V, DeBoeck G, Mohanta KN. Aquaculture and stress management: a review of probiotic intervention. *J Anim Physiol Anim Nutr.* 2013;97:405-30.
- Neil LL, Fotedar R, Shelley CC. Effects of acute and chronic toxicity of unionized ammonia on mud crab, *Scylla serrata* (Forsskål, 1755) larvae. *Aquac Res.* 2005;36:927-32.
- Nogami K, Maeda M. Bacteria as biocontrol agents for rearing larvae of the crab *Portunus trituberculatus*. *Can J Fish Aquat Sci.* 1992;49:2373-6.
- Olmos J. *Bacillus subtilis* a potential probiotic bacterium to formulate functional feeds for aquaculture. *J Microb Biochem Technol.* 2014;6:361-5.
- Padmavathi P, Sunitha K, Veeraiah K. Efficacy of probiotics in improving water quality and bacterial flora in fish ponds. *Afr J Microbiol Res.* 2012;6:7471-8.
- Patangia DV, Anthony Ryan C, Dempsey E, Paul Ross R, Stanton C. Impact of antibiotics on the human microbiome and consequences for host health. *MicrobiologyOpen.* 2022;11:e1260.
- Poornima M, Singaravel R, Rajan JJS, Sivakumar S, Ramakrishnan S, Alavandi SV, et al. *Vibrio harveyi* infection in mud crabs (*Scylla tranquebarica*) infected with white spot syndrome virus. *Int J Res Biol Sci.* 2012;2:1-5.
- Quast C, Pruesse E, Yilmaz P, Gerken J, Schweer T, Yarza P, et al. The SILVA ribosomal RNA gene database project: improved data processing and web-based tools. *Nucleic Acids Res.* 2013;41:D590-6.
- Romo-Barrera CM, Castrillón-Rivera LE, Palma-Ramos A, Castañeda-Sánchez JI, Luna-Herrera J. *Bacillus licheniformis* and *Bacillus subtilis*, probiotics that induce the formation of macrophage extracellular traps. *Microorganisms.* 2021;9:2027.
- Sahandi J, Sorgeloos P, Xiao H, Wang X, Qi Z, Zheng Y, et al. The use of selected bacteria and yeasts to control *Vibrio* spp. in live food. *Antibiotics.* 2019;8:95.
- Seneriches-Abiera ML, Parado-Estepa F, Gonzales GA. Acute toxicity of nitrite to mud crab *Scylla serrata* (Forsskål) larvae. *Aquac Res.* 2007;38:1495-9.
- Soltani M, Ghosh K, Hoseinifar SH, Kumar V, Lymbery AJ, Roy S, et al. Genus *Bacillus*, promising probiotics in aquaculture: aquatic animal origin, bio-active components, bioremediation and efficacy in fish and shellfish. *Rev Fish Sci Aquac.* 2019;27:331-79.
- Stein T. *Bacillus subtilis* antibiotics: structures, syntheses and specific functions. *Mol Microbiol.* 2005;56:845-57.
- Sudha A, Saravana Bhavan P, Manjula T, Kalpana R, Karthik M. *Bacillus licheniformis* as a probiotic bacterium for culture of the prawn *Macrobrachium rosenbergii*. *Res J Life Sci Bioin-*

- form Pharm Chem Sci. 2019;5:44-61.
- Sun Y, Zhou L, Fang L, Su Y, Zhu W. Responses in colonic microbial community and gene expression of pigs to a long-term high resistant starch diet. *Front Microbiol.* 2015;6:1-10.
- Susianingsih E, Muliani, Nurhidayah, Kadriah IAK, Atmomarsono M. Use of probiotics, mangrove leaf extract, and bacterin for alternative disease prevention in tiger shrimp culture. *IOP Conf Ser Earth Environ Sci.* 2022;1119:012062.
- Syafaat MN, Gunarto, Sulaeman, Herlinah, Ma H, Ikhwanuddin M. Effects of different feeding regimes on larvae and crablets of purple mud crab, *Scylla tranquebarica* (Fabricius, 1798). *Aquac Rep.* 2019;15:1-7.
- Talib A, Onn KK, Chowdury MA, Din WMW, Yahya K. The beneficial effects of multispecies *Bacillus* as probiotics in enhancing culture performance for mud crab *Scylla paramamosain* larval culture. *Aquac Int.* 2017;25:849-66.
- Vaseeharan B, Ramasamy P. Control of pathogenic *Vibrio* spp. by *Bacillus subtilis* BT23, a possible probiotic treatment for black tiger shrimp *Penaeus monodon*. *Lett Appl Microbiol.* 2003;36:83-7.
- Waiho K, Fazhan H, Qunitio ET, Baylon JC, Fujaya Y, Azmie G, et al. Larval rearing of mud crab (*Scylla*): what lies ahead. *Aquaculture.* 2018;493:37-50.
- Wang Q, Garrity GM, Tiedje JM, Cole JR. Naïve bayesian classifier for rapid assignment of rRNA sequences into the new bacterial taxonomy. *Appl Environ Microbiol.* 2007;73:5261-7.
- Wu HJ, Sun LB, Li CB, Li ZZ, Zhang Z, Wen XB, et al. Enhancement of the immune response and protection against *Vibrio parahaemolyticus* by indigenous probiotic *Bacillus* strains in mud crab (*Scylla paramamosain*). *Fish Shellfish Immunol.* 2014;41:156-62.
- Yilmaz S, Yilmaz E, Dawood MAO, Ringø E, Ahmadifar E, Abdel-Latif HMR. Probiotics, prebiotics, and synbiotics used to control vibriosis in fish: a review. *Aquaculture.* 2022;547:737514.
- Zhang X, Zhang M, Zheng H, Ye H, Zhang X, Li S. Source of hemolymph microbiota and their roles in the immune system of mud crab. *Dev Comp Immunol.* 2020;102:103470.
- Zhou J, Fang W, Yang X, Zhou S, Hu L, Li X, et al. A nonluminescent and highly virulent *Vibrio harveyi* strain is associated with “bacterial white tail disease” of *Litopenaeus vannamei* shrimp. *PLOS ONE.* 2012;7:e29961.
- Zokaeifar H, Balcázar JL, Saad CR, Kamarudin MS, Sijam K, Arshad A, et al. Effects of *Bacillus subtilis* on the growth performance, digestive enzymes, immune gene expression and disease resistance of white shrimp, *Litopenaeus vannamei*. *Fish Shellfish Immunol.* 2012;33:683-9.
- Zorriehzahra MJ, Delshad ST, Adel M, Tiwari R, Karthik K, Dhama K, et al. Probiotics as beneficial microbes in aquaculture: an update on their multiple modes of action: a review. *Vet Q.* 2016;36:228-41.