



## Erratum to "Bispecific Antibody-Bound T Cells as a Novel Anticancer Immunotherapy" [*Biomol. Ther.* 30 (2022) 418-426]

Jaewon Cho<sup>1,†</sup>, Nara Tae<sup>2,†</sup>, Jae-Hee Ahn<sup>1</sup>, Sun-Young Chang<sup>3</sup>, Hyun-Jeong Ko<sup>1,2,\*</sup> and Dae Hee Kim<sup>1,2,\*</sup>

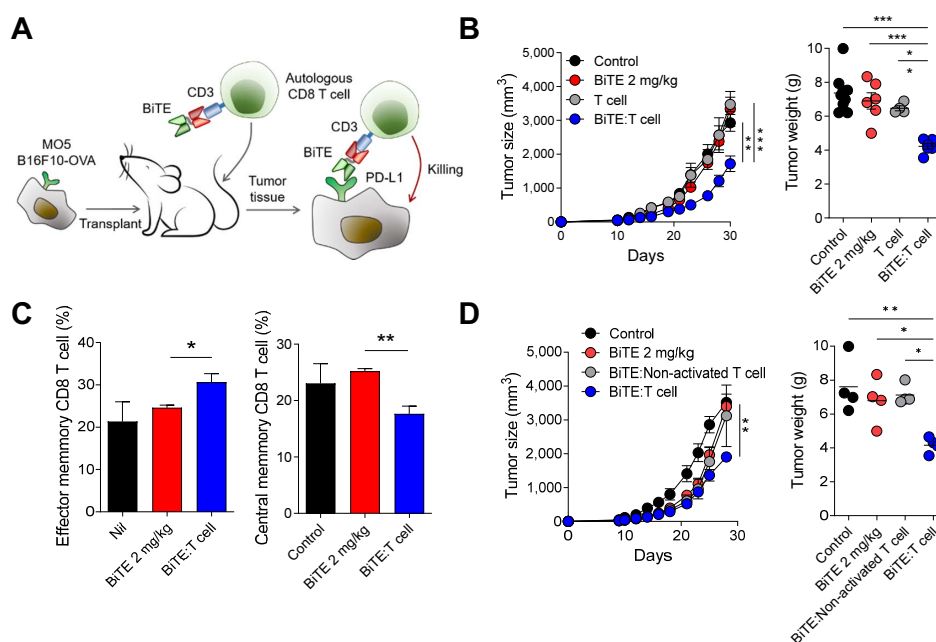
<sup>1</sup>Department of Pharmacy, Kangwon National University, Chuncheon 24341,

<sup>2</sup>Kangwon Institute of Inclusive Technology, Kangwon National University, Chuncheon 24341,

<sup>3</sup>College of Pharmacy, Ajou University, Suwon 16499, Republic of Korea

The authors request the correction of the annotation in Fig. 3B and 3D on page 422, as well as in Fig. 4C on page 423. Due to the modification of the annotation in Fig. 3B and 3D, several sentences will also need to be adjusted accordingly.

In figure legend 3A and 3D on page 422, BiTE (2 µg/kg) should change to BiTE (2 mg/kg).



**Fig. 3.** (Revised)

**Open Access** <https://doi.org/10.4062/biomolther.2024.003>

This is an Open Access article distributed under the terms of the Creative Commons Attribution Non-Commercial License (<http://creativecommons.org/licenses/by-nc/4.0/>) which permits unrestricted non-commercial use, distribution, and reproduction in any medium, provided the original work is properly cited.

DOI of original article : <https://doi.org/10.4062/biomolther.2022.015>

**\*Corresponding Authors**

E-mail: kimdh1@gmail.com (Kim DH), hjko@kangwon.ac.kr (Ko HJ)

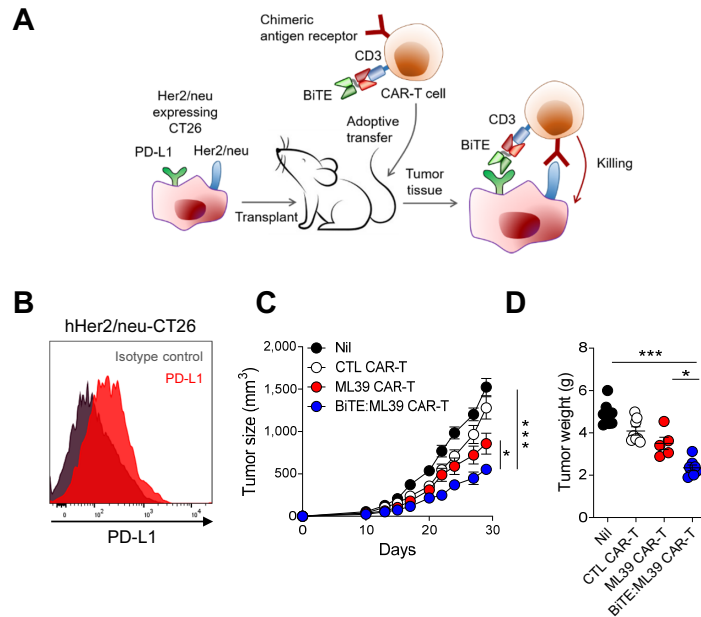
Tel: +82-33-250-8086 (Kim DH), +82-33-250-6923 (Ko HJ)

Fax: +82-33-250-8088 (Kim DH), +82-33-259-5631 (Ko HJ)

<sup>†</sup>The first two authors contributed equally to this work.

In result section subtitle ‘Tumor growth was suppressed after transferring BiTE-bound polyclonal CD8 T cells’, the sentence of ‘Introduced mCD3xPD-L1 BiTE:T cells significantly suppressed tumor growth compared to both 2 µg/kg of BiTE intraperitoneal injection and plain T cell treatment (Fig. 3B)’ need to be changed as ‘Introduced mCD3xPD-L1 BiTE:T cells significantly suppressed tumor growth compared to both 2 mg/kg of BiTE intraperitoneal injection and plain T cell treatment (Fig. 3B)’.

The annotation in Fig. 4C has been revised: the colors of CTL CAR-T and ML39 CAR-T have been altered. CTL CAR-T is now depicted in white, while ML39 CAR-T is represented in red.



**Fig. 4.** (Revised)

During the preparation of the manuscript and figures, the authors inadvertently made a typographical error. This error does not impact the conclusions of the article. Nonetheless, the authors sincerely apologize for any inconvenience caused by this oversight.