

**ARTICLE**

# Oral Administration of *Bifidobacterium lactis* Ameliorates Cognitive Deficits in Mice Intracerebroventricularly Administered Amyloid Beta via Regulation the Activation of Mitogen-activated Protein Kinases

 OPEN ACCESS

**Received** December 28, 2023

**Revised** January 4, 2024

**Accepted** January 5, 2024

 Jong Kyu Choi<sup>1</sup>, Oh Yun Kwon<sup>1,2</sup>, and Seung Ho Lee<sup>1,2,\*</sup>
<sup>1</sup>Department of Nano-Bioengineering, Incheon National University, Incheon 22012, Korea

<sup>2</sup>Institute of New Drug Development, Incheon National University, Incheon 22012, Korea

**\*Corresponding author** : Seung Ho Lee  
 Department of Nano-Bioengineering,  
 Incheon National University, Incheon 22012,  
 Korea  
 Tel: +82-32-835-8260  
 Fax: +82-32-835-0798  
 E-mail: [seungho@inu.ac.kr](mailto:seungho@inu.ac.kr)

**\*ORCID**  
 Jong Kyu Choi  
<https://orcid.org/0000-0002-5795-699X>  
 Oh Yun Kwon  
<https://orcid.org/0000-0002-3783-3220>  
 Seung Ho Lee  
<https://orcid.org/0000-0002-9941-4195>

**Abstract** Probiotics are functional microorganisms that exhibit various biological activities, such as allergic reactions, inflammation, and aging. The aim of this study is to evaluate the effects of *Bifidobacterium lactis* CBT BL3 (BL) on the amyloid beta (A $\beta$ )-mediated cognitive impairments. Oral administration of live BL to intracerebroventricularly A $\beta$ -injected mice significantly attenuated short- and long-term memory loss estimated using the Y-maze and Morris water maze tests. We found that expression of apoptosis-related proteins such as caspase-9, caspase-3, and cleaved poly (ADP-ribose) polymerase was significantly elevated in the brain tissues of A $\beta$ -injected mouse brains when compared to that of the control mouse group. Interestingly, these expression levels were significantly decreased in the brain tissue of mice fed BL for 6 wk. In addition, the abnormal over-phosphorylation of mitogen-activated protein kinases (MAPKs) such as ERK1/2, p38 MAPK, and JNK in the brain tissue of intracerebroventricularly A $\beta$ -injected mice was significantly attenuated by oral administration of BL. Taken together, the results indicate that A $\beta$ -induced cognitive impairment may be ameliorated by the oral administration of BL by controlling the activation of MAPKs/apoptosis in the brain. This study strongly suggests that BL can be developed as a functional probiotic to attenuate A $\beta$ -mediated cognitive deficits.

**Keywords** *Bifidobacterium lactis*, cognitive deficits, Alzheimer's disease, probiotics

## Introduction

Alzheimer's disease (AD) is a neurodegenerative disease accompanied by cognitive impairment and memory loss that interfere with normal social life. AD is the most common cause of dementia, and the number of patients with AD is expected to grow to

13.8 million by 2060 (Sh Lapobersky and Neporent, 1945). Several studies have investigated the causes of AD. Among them, senile plaques composed of excessive accumulation of amyloid beta ( $A\beta$ ) are known to be one of the direct causes of AD development by inducing damage to brain cells (Tiwari et al., 2019). Therefore, the majority of anti-AD drugs have focused on reducing the toxicity of  $A\beta$ , but have mostly shown unfavorable results in clinical studies (Cummings, 2018). Therefore, currently, only drugs such as donepezil, memantine, and rivastigmine, which can improve AD symptoms, are used to cure patients with AD (Livingston et al., 2020; Yiannopoulou and Papageorgiou, 2020).

In the brain tissues of patients with AD, a massive loss of neurons is easily detected, which could be partially caused by apoptosis (Behl, 2000). Neuronal loss in the cerebral cortex and hippocampus is a major cause of cognitive impairment in patients with AD (Lu et al., 2022). Since the damaged brain tissue in these patients cannot be recovered by currently available anti-AD drugs, attenuating the process of apoptosis could be an effective way to prevent AD progression. Studies have revealed the molecular regulators that control the activation of apoptosis-related genes in the AD brain (Sharma et al., 2021). Among them, mitogen-activated protein kinases (MAPKs) have been suggested as master regulators controlling the abnormal expression of apoptosis-related genes, such as caspases and the bcl-2 family in the brain tissue of AD-like animal models (Kwon and Lee, 2020; Kwon and Lee, 2021; Kwon and Lee, 2023). Therefore, ameliorating MAPKs activation induced by  $A\beta$  could be an attractive way to prevent or cure AD progression.

To develop effective drugs for patients with AD, the need to identify new regulators of AD progression is rapidly increasing (Zhang et al., 2021). Recently, the gut microbiota has received much attention as a key regulator of the progression of various diseases, such as diabetes, atopic dermatitis, and neurological disorders (Fang et al., 2021; Homayouni et al., 2020; Socala et al., 2021). Studies using AD-like animal models have shown key regulatory roles of the gut microbiota in improving cognitive impairment, indicating the importance of using functional probiotics to activate the bidirectional interaction between the gut microbiota and the brain (Kwon and Lee, 2022). Therefore, if we find effective and safe microorganisms that can modulate the gut microbiota of patients with AD in a healthy state, we believe that they can be developed as potential microbial-based therapeutic agents that can modulate AD progression.

*Bifidobacteria* are gram-positive anaerobic bacteria that are believed to provide positive benefits to their hosts (Hidalgo-Cantabrana et al., 2017; Picard et al., 2005). Therefore, the use of various *Bifidobacterium* strains as probiotics to treat various diseases, including AD, has been actively studied (Jakubczyk et al., 2020; Kwon and Lee, 2022; Shu et al., 2020; Wieërs et al., 2019). However, to develop *Bifidobacterium*-based drugs for AD, the use of appropriate AD-like animal models and a clear evaluation of their effects on molecular changes in the brain should be accompanied by assessments of each strain. In the present study, we evaluated the regulatory roles of *Bifidobacterium lactis* CBT BL3 (BL) in cognitive deficits and molecular changes in the brain of an AD-like animal model.

## Materials and Methods

### Materials

Rabbit anti-phospho-ERK1/2 (9102S), rabbit anti-ERK1/2 (9101S), rabbit anti-phospho-p38 MAPK (9212S), rabbit anti-p38 MAPK (9211S), rabbit anti-phospho-JNK (9251S), and rabbit anti-JNK (9252S) antibodies were purchased from Cell Signaling Technology (Danvers, MA, USA). Mouse anti-caspase-9 (9508P), rabbit anti-caspase-3, and rabbit anti-cleaved poly (ADP-ribose) polymerase (PARP) antibodies were purchased from Cell Signaling Technology.

## **Probiotics**

BL isolated from infant feces (KCTC 11904BP) was provided by Cell Biotech (Gimpo, Korea) and cultured in BL medium (Difco, Becton Dickinson, Bergen County, NJ, USA) for 24 h at 37°C under anaerobic conditions using a gas pack EZ pouch system (BD Biosciences, Bergen County, NJ, USA). Live BL ( $2 \times 10^9$  CFU/mL) was centrifuged and washed twice with phosphate-buffered saline (PBS) and orally administrated to mice (100  $\mu$ L/mouse/d) for 6 wk.

## **Preparation of amyloid beta peptide solution**

A $\beta$  peptide (A $\beta_{25-35}$ ) was purchased from Abcam (Cambridge, UK) and dissolved in DMSO solution (10%, w/v) and then aggregated in a 37°C shaking incubator (JEIO TECH, Daejon, Korea) for 1 week. Finally, A $\beta$  solution was diluted with PBS (410  $\mu$ mol/5  $\mu$ L) and intracerebroventricularly (ICV) injected into the mouse brains according to a previously described method (Kim et al., 2016).

## **Animal experiments**

C57BL/6 male mice (4 wk old) were obtained from RaonBio (Yongin, Korea). After adaptation (1 week), the mice were divided into three groups (n=10): control, A $\beta$ , and A $\beta$ +BL. The control group was ICV injected with PBS (5  $\mu$ L) and gavaged with PBS (100  $\mu$ L). A $\beta$  group was ICV-injected with A $\beta$  peptide (410  $\mu$ mol/5  $\mu$ L) and gavaged with PBS (100  $\mu$ L). The A $\beta$ +BL group was ICV-injected with A $\beta$  peptide (410  $\mu$ mol/5  $\mu$ L) and gavaged with BL ( $2 \times 10^9$  CFU/mL, 100  $\mu$ L/mouse/d) for 6 wk. Animal experiments were conducted in a room maintained at 22 $\pm$ 3°C with 55 $\pm$ 10% humidity, and a 12-h light/12-h dark cycle. The mice had access to food and water *ad libitum*. Three days after A $\beta$  or PBS ICV injection, the Y-maze and Morris water maze (MWM) tests were sequentially performed.

## **Y-maze test**

To estimate the effects of BL in an AD-like mouse model, the short-term memory deficit of each mouse group was estimated using the Y-maze test according to a previously described method (Kwon and Lee, 2020). Briefly, the mice were introduced to the center of the Y-shaped maze with three white plastic arms and allowed to explore the arms. The number of arm entries for each mouse was counted for 8 min to estimate the percentage of alterations. The rate of alternation (%) was estimated as follows: alternation behavior (%) = (actual alternations) / (possible alternations)  $\times$  100. Possible alterations were calculated as the total number of arm entries – 2. The movements of each mouse were recorded using the SMART 3.0 video-tracking system (Harvard Apparatus, Holliston, MA, USA).

## **Morris water maze test**

The MWM test was performed according to a previously described method (Kwon and Lee, 2023). Briefly, during a training session, mice were allowed to swim three times to escape to a visible platform (30 cm in height and 6 cm in diameter) located in the southwest (SW) zone of the pool. In the MWM test, the mice were gently dropped into three different zones (north, east, and south), and the time taken to reach the submerged platform was in the SW zone. The MWM test was repeated for 4 d. For the probe test (5 d after the MWM test), the mice were allowed to swim for 60 s in a pool without a platform, and the time spent in the SW zone was calculated. All movements were recorded and calculated using the SMART 3.0 video-tracking system (Harvard Apparatus).

## Western blotting

After completing the MWM test, the mouse brain tissue (10 mg) was isolated and homogenized in ice-cold cell lysis buffer (5 mL; Kwon et al., 2020) using a homogenizer (Huanyu Instrument, Zhejiang, China). After centrifugation (13,000×g, 4°C, 10 min), the supernatant was used for western blotting according to a previously described method (You et al., 2022). Briefly, each protein sample (30 µg) was separated by SDS-PAGE and transferred to a nitrocellulose membrane. The membrane was incubated in nonfat milk (5%, w/v) at 4°C for 15 h to block nonspecific binding, and then incubated with the primary antibodies (all 1:2,000) at 4°C for 18 h. After washing three times with Tris-buffered saline (TBS)-T buffer [136 mM NaCl, 20 mM Tris, Tween 20 (0.4%, w/v), pH 7.4], the membrane was incubated with a horseradish peroxidase-conjugated secondary antibody (1:3,000; Abcam). After washing three times with TBS-T, the membrane was incubated with an enhanced chemiluminescence detection reagent (Bio-Rad, Hercules, CA, USA) at room temperature for 5 min and then exposed on an X-ray film (Agfa, Motsel, Belgium). The bands were visualized using a film developer (TAEAHN Machine, Incheon, Korea).

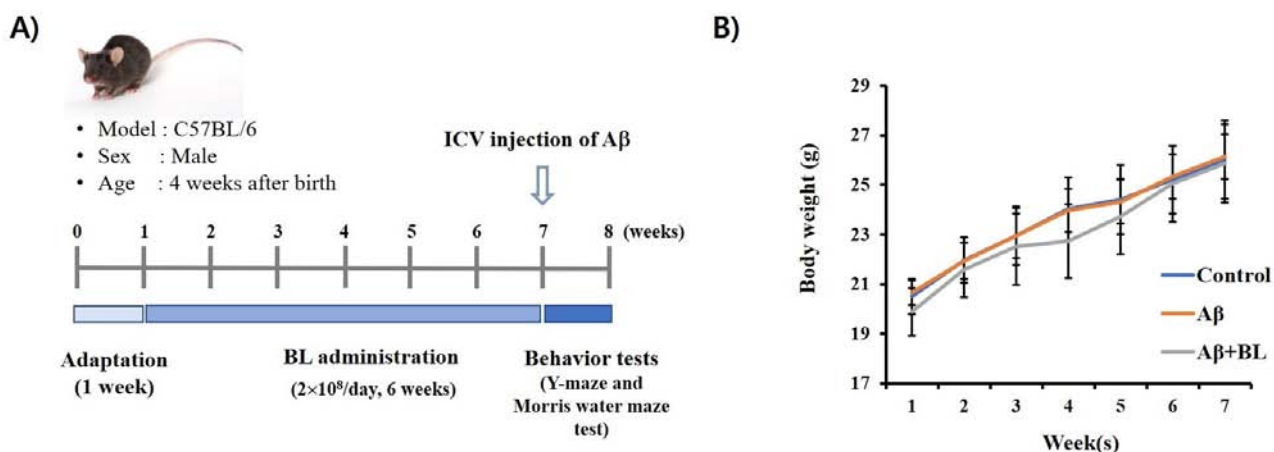
## Statistical analyses

Statistical differences between groups were analyzed using two-way ANOVA, followed by Tukey's post-hoc multiple comparison test. Data were expressed as mean±SEM and GraphPad Prism 5 (GraphPad Software, La Jolla, CA, USA) was used for all statistical analyses.  $p < 0.05$  was considered statistically significant.

## Results

### Administration of *Bifidobacterium lactis* CBT BL3 attenuated loss of short-term memory in Alzheimer's disease-like mouse model

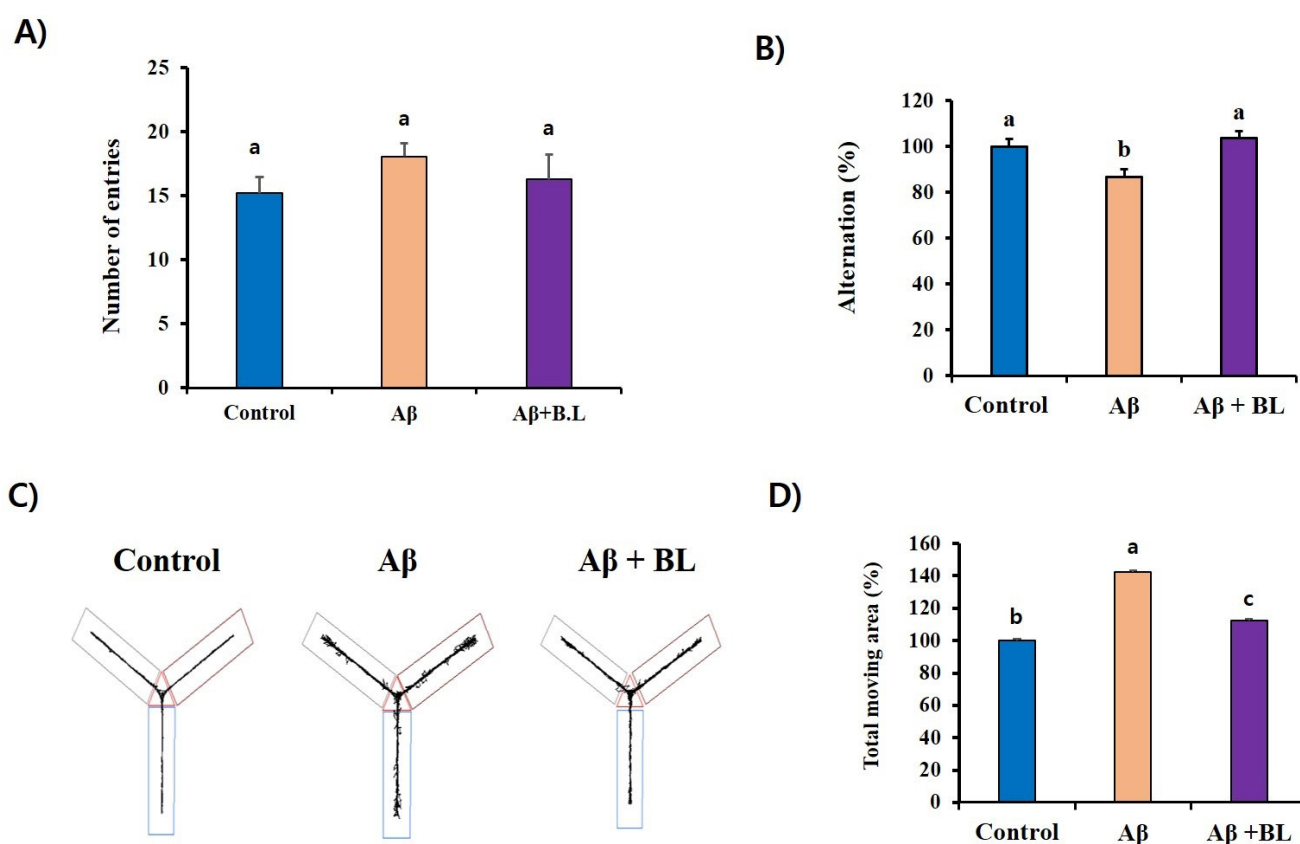
To investigate the effects of BL on AD progression, live BL was orally administered to the mice for 6 wk, and then the A $\beta$  peptide was ICV-injected into the mouse brain (Fig. 1A). We found that changes in mouse body weight did not differ among



**Fig. 1.** Scheme of animal experiments and body weight change of each mouse group. *Bifidobacterium lactis* CBT BL3 (BL;  $2 \times 10^8$ /d/mouse) was orally administrated to C57BL/6 mice for 6 wk. After ICV A $\beta$  injection, Y-maze and Morris water maze tests were sequentially performed (n=10) (A). Change in body weight of each mouse group was calculated during the experiments (B). Data expressed as mean±SEM. ICV, intracerebroventricularly; A $\beta$ , amyloid beta.

the groups ( $p>0.05$ ) during the experiment (Fig. 1B). This suggests that the administration of BL may not have induced toxic effects in the mice in this experiment.

The Y-maze test is a well-known behavioral test used to measure the willingness of mice to explore new environments. Typically, mice prefer to explore new places rather than areas they have visited before. Therefore, when the mouse was placed in the center of the Y-maze, it started to explore the three arms according to its instincts. However, if the mouse brain is damaged enough to impair memory by ICV A $\beta$  injection, the mouse will re-enter the arm of the Y-maze that was previously visited. In our study, although the number of entries was not significantly different among the mouse groups ( $p>0.05$ ; Fig. 2A), the alteration (%) of the A $\beta$  mouse group ( $86.64\pm3.54$ ) in the Y-maze test was significantly ( $p<0.05$ ) lower than that of the control group ( $100\pm3.49$ ). However, it was significantly ( $p<0.05$ ) rescued by the oral administration of BL to ICV A $\beta$  mice ( $103.68\pm3.16$ ; Fig. 2B). These results suggest that the administration of BL effectively ameliorated the A $\beta$ -mediated impairment of short-term memory in mice. Furthermore, imbalanced movement was detected in the A $\beta$  mouse group ( $142.23\pm6.10$ ) compared to the control group ( $100\pm6.66$ ). However, it significantly ( $p<0.05$ ) disappeared in the A $\beta$ +BL mouse group ( $112.43\pm7.84$ ; Figs. 2C and D). These results suggest that impairments in spatial working memory caused by ICV A $\beta$  injection can be prevented by oral administration of BL.



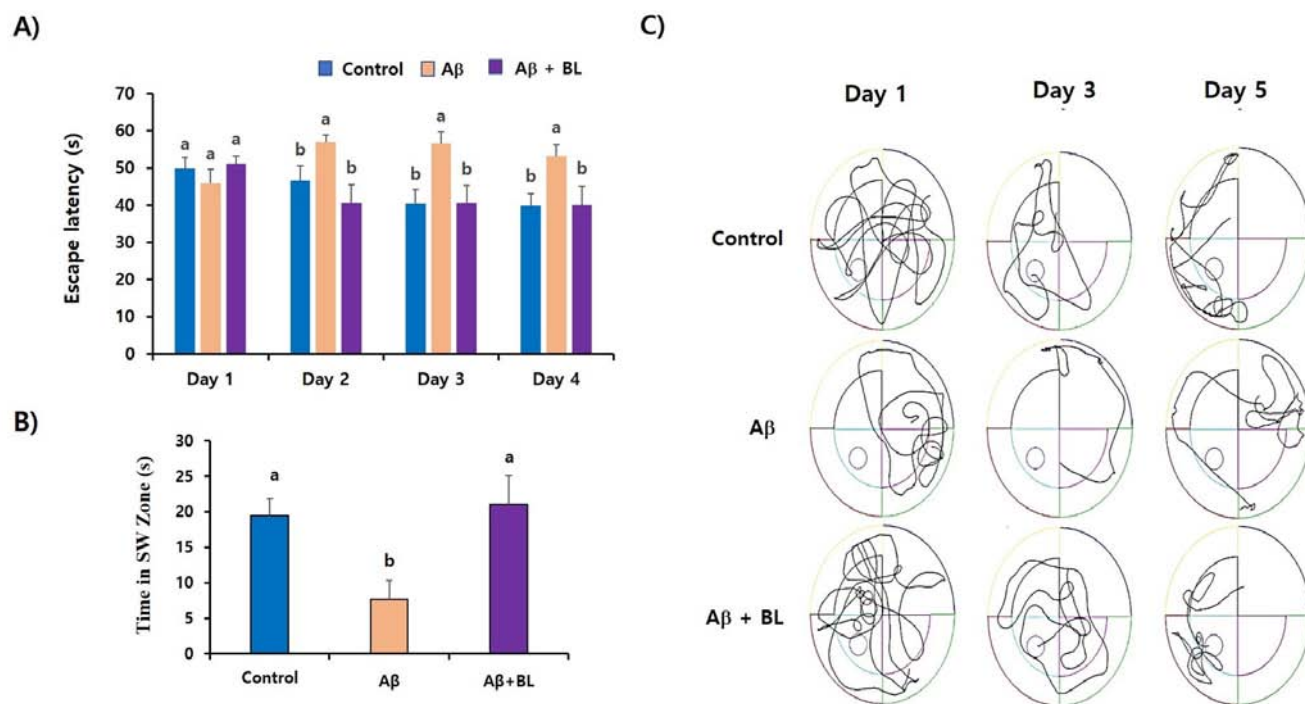
**Fig. 2. *Bifidobacterium lactics* CBT BL3 (BL) prevented A $\beta$ -induced impairment of spatial memory.** Number of entries among mouse groups (A) and spontaneous alteration (%) (B) was calculated. Path tracing (C) of each mouse group was recorded by using SMART 3.0 video-tracking system and total area of path tracing was calculated using Image J (D). Data expressed as mean $\pm$ SEM. <sup>a-c</sup> Different letters indicate significant ( $p<0.05$ ) differences between groups. A $\beta$ , amyloid beta.

### Amyloid beta-mediated impairments in long-term memory was attenuated by *Bifidobacterium lactis* CBT BL3 in Alzheimer's disease-like mouse model

Next, we evaluated the effects of BL on A $\beta$ -induced impairment in long-term memory using the MWM test. The time spent to reach the escape platform (escape latency), which was in the SW zone of the MWM chamber, was calculated for 4 d. As shown in Fig. 3A, the escape latency (s) of the control group gradually decreased, indicating that the control group learned the location of the escape platform. However, the escape latency (s) of the A $\beta$  mouse group was not reduced during the MWM test (4 d) and showed significant ( $p<0.05$ ) differences compared to that of the control group. Interestingly, the BL mouse group showed similar escape latency (s) as the control group from day-2 of the MWM test, indicating that the administration of BL significantly attenuated the loss in long-term memory induced by ICV A $\beta$  injection. The effects of BL on long-term memory impairment were further evaluated by measuring the time spent in the SW region without an escape platform (probe test). As shown in Figs. 3B and C, the A $\beta$  mouse group spent significantly ( $p<0.05$ ) less time ( $7.68\pm 2.65$ ) in the SW region compared to the control group ( $19.46\pm 2.33$ ), suggesting that the AD-like mouse group had problems with long-term memory. The BL mouse group spent as much time ( $21.00\pm 4.10$ ) as the control group in the SW region, indicating that oral administration of BL effectively prevented the loss of long-term memory induced by ICV A $\beta$  injection.

### Expression of apoptosis-related proteins was attenuated by *Bifidobacterium lactis* CBT BL3 administration in Alzheimer's disease-like mouse brain

To evaluate the effects of the oral administration of BL on A $\beta$ -induced apoptosis in the mouse brain, we compared the

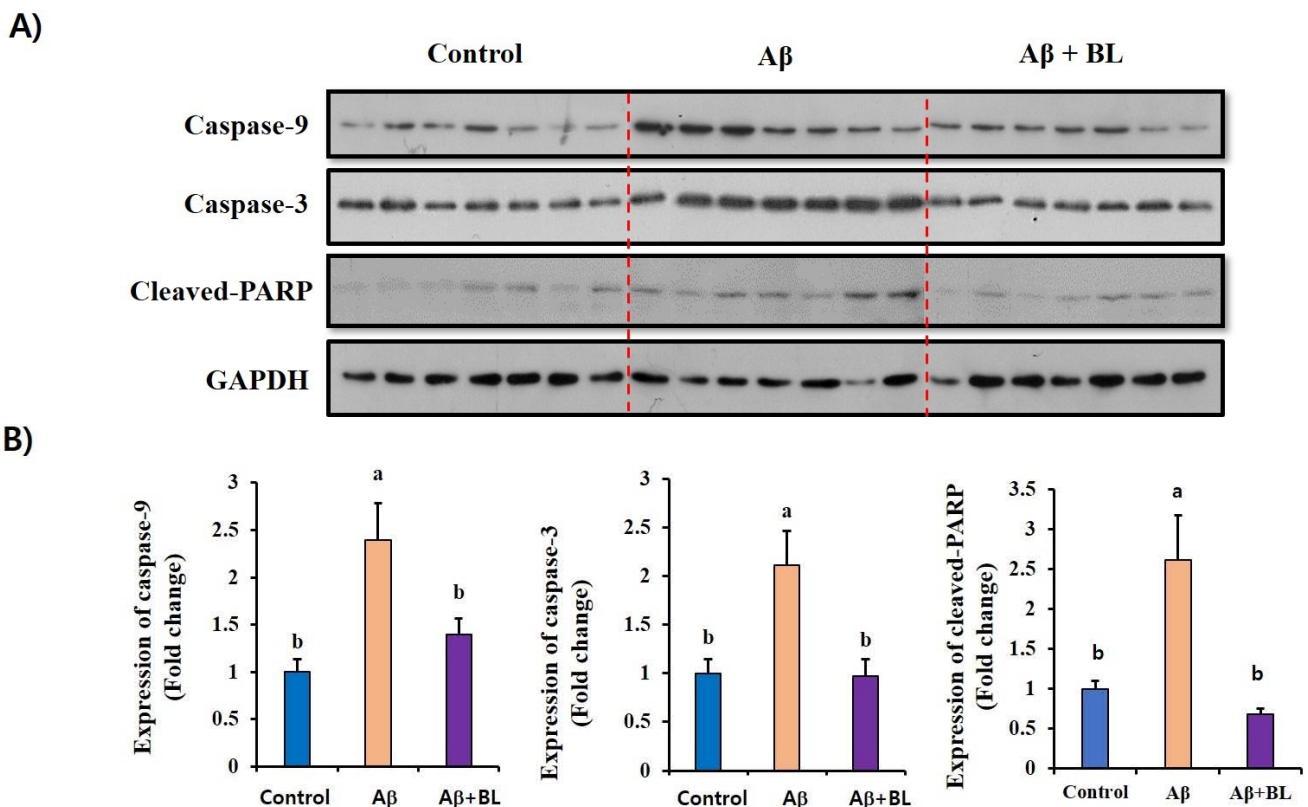


**Fig. 3.** Impairment of long-term memory was estimated by Morris water maze test. Escape latency (s) of each mouse group ( $n=10$ ) was estimated for 4 d (A) and time (s) spent in SW zone at day-5 was estimated (B). Pattern of mouse movements during probe test was recorded and a representative figure is shown (C). Data expressed as mean $\pm$ SEM. <sup>a,b</sup> Different letters indicate significant ( $p<0.05$ ) differences between groups. A $\beta$ , amyloid beta; SW, southwest.

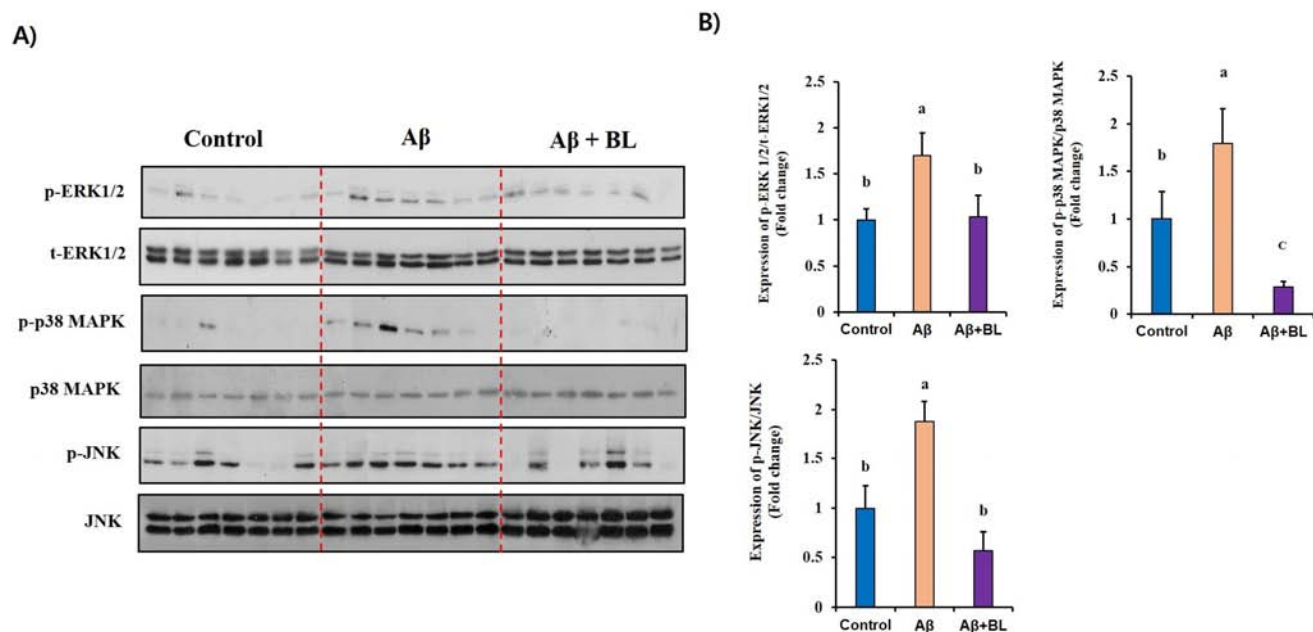
expression of apoptosis-related proteins, such as caspase-9, caspase-3, and cleaved PARP, in the brain tissues of each mouse group using western blotting (Fig. 4A). The relative expression of apoptosis-related proteins in the A $\beta$  mouse group was significantly higher ( $p < 0.05$ ) than that in the control group. However, these increases were significantly ( $p < 0.05$ ) abolished in the brain tissues of BL-fed mice (Fig. 4B). These results strongly suggest that the expression of apoptosis-related proteins that can induce neuronal death can be attenuated by oral administration of BL.

***Bifidobacterium lactis* CBT BL3 attenuated amyloid beta-mediated abnormal activation of mitogen-activated protein kinases in mouse brain**

MAPKs have been suggested to be key intracellular regulators of the abnormal expression of AD-related genes. Therefore, to determine whether MAPK activation is involved in the BL-mediated anti-AD effects, we investigated changes in the activation/phosphorylation of MAPKs in the brain tissues of each mouse group. As shown in Fig. 5, the relative expression of MAPKs (p-ERK1/2/ERK1/2, p-p38 MAPK/p38 MAPK, and p-JNK/JNK) was significantly ( $p < 0.05$ ) upregulated in the brain tissue of the A $\beta$  mouse group compared to that in the control group. Interestingly, we found that MAPK activation/phosphorylation in the brain tissue of the A $\beta$ +BL mouse group was significantly ( $p < 0.05$ ) downregulated compared to that in



**Fig. 4.** A $\beta$ -induced apoptosis in mouse brain was attenuated by oral administration of *Bifidobacterium lactis* CBT BL3 (BL). Brain tissues (n=7) of each mouse group were randomly selected and total protein was extracted to measure degree of cell death in mouse brain. Expression levels of apoptosis-related proteins (caspase-3, caspase-9, and cleaved PARP) were estimated by western blotting (A) and tabulated (B). Band intensity was measured using Image J and normalized to GAPDH. Data expressed as mean $\pm$ SEM. <sup>a,b</sup> Different letters indicate significant ( $p < 0.05$ ) differences between groups. A $\beta$ , amyloid beta; PARP, poly (ADP-ribose) polymerase; GAPDH, glyceraldehyde 3-phosphate dehydrogenase.



**Fig. 5.** A $\beta$ -mediated abnormal phosphorylation on MAPKs in brains of each mouse group was abolished in brain tissues of mouse fed *Bifidobacterium lactis* CBT BL3 (BL). Total protein from randomly selected brain tissues (n=7) of each mouse group was used for estimating activation/phosphorylation of MAPKs by western blotting (A). Band intensity was calculated using Image J and normalized to GAPDH (B). Data expressed as mean $\pm$ SEM. <sup>a-c</sup> Different letters indicate significant ( $p < 0.05$ ) differences between groups. A $\beta$ , amyloid beta; MAPKs, mitogen-activated protein kinases; GAPDH, glyceraldehyde 3-phosphate dehydrogenase.

the A $\beta$  mouse group. These results suggest that the activation/phosphorylation of MAPKs in A $\beta$ -injected mouse brains was ameliorated by the effects of BL in the mouse gut.

## Discussion

AD is a progressive neurodegenerative disease in which dementia symptoms such as memory loss and inappropriate language gradually worsen. Neuronal damage to the brain affects memory, thinking, and language (Jack et al., 2009; Reiman et al., 2012; Villemagne et al., 2013). As AD is a progressive disease, suppressing the increase in damaged neurons is thought to be important for attenuating the progression of AD.

Apoptosis in the AD brain is a common physiological process and considered a major cellular cause of cognitive impairment (Behl, 2000; Reiss et al., 2018; Yankner et al., 1989). Caspases are well-known proteinases that play important roles in the final steps of apoptosis. Once the apoptotic signaling pathway is triggered by A $\beta$ , the expression of caspases such as caspases-9 and caspases-3, increase sequentially, resulting in the cleavage of various cellular proteins (Sahoo et al., 2023; Shimohama, 2000). PARP is a polymerase that plays an important role in maintaining cell stability by repairing DNA (Pascal, 2018). In addition, when the cell death pathway is activated, the cleavage of PARP by caspase-3 is often detected in several neurological diseases, such as AD and Parkinson's disease (Chaitanya et al., 2010; Park et al., 2020). Therefore, the level of cleaved-PARP have is a hallmark of neuronal apoptosis. Therefore, caspase targeting could be a useful strategy for developing efficient anti-AD drugs. Interestingly, we found that administration of BL attenuated the expression of caspase-9 and caspase-3 as well as cleaved PARP in ICV A $\beta$ -injected mouse brains. These results provide direct molecular evidence that increased BL levels in the mouse gut can inhibit the upregulation of apoptosis induced by A $\beta$  accumulation in the mouse



brain. Therefore, the data strongly suggest that BL can be developed as an anti-AD agent to prevent A $\beta$ -induced apoptosis in the brain.

MAPKs are central signaling molecules that control a variety of cellular events such as proliferation, differentiation, apoptosis, and neurodegeneration (Kim and Choi, 2010; Sun et al., 2015). A $\beta$ -induced memory impairment as well as neuronal apoptosis were reported to be closely related with abnormal phosphorylation of MAPKs; therefore, several MAPK inhibitors have received much attention as potent anti-AD drugs (Sharma et al., 2021; Tiwari et al., 2019). In the current study, we found abnormal expression of phosphorylated MAPKs in A $\beta$ -administered mouse brains but this was resolved in the brains of BL-administered mice, suggesting that BL in the mouse gut downregulated the A $\beta$ -induced activation/phosphorylation of MAPKs, which may result in the stimulation of the expression of apoptosis-related genes in the mouse brain. This direct evidence of BL-mediated molecular changes in AD-like brain tissue provides high reliability regarding the anti-AD effects of BL.

BL, isolated from human feces, has shown anti-atopic dermatitis and alcohol tolerance activities (Kim et al., 2019; Lim et al., 2021). In addition, it has been reported that the administration of a probiotic mixture containing BL reduced the manifestations of diarrheal disorders in patients with irritable bowel syndrome (Drozdov et al., 2023). However, to the best of our knowledge, this is the first study to show the ameliorating effect of BL on cognitive impairment. To verify this, we used an ICV A $\beta$ -injected mouse model, which is recognized as an acute AD-like animal model (Kwon and Lee, 2022), and focused on whether oral administration of BL could attenuate A $\beta$ -induced short- and long-term memory loss. We found that oral administration of BL to ICV A $\beta$ -injected mice dramatically restored alternation (%) in the Y-maze test and escape latency (s) in the MWM test to the levels of the control group. These results strongly suggest that impairments in brain function induced by A $\beta$  accumulation are attenuated by the action of BL in the mouse gut. Although the actual mediator that connects BL in the gut and brain of ICV A $\beta$ -injected mice could not be elucidated in this study, BL-derived short-chain fatty acids (SCFAs), such as butyrate, propionic acid, and acetate, may be possible candidates for transmitting the beneficial effects of BL in the mouse gut to the brain. SCFAs produced by the gut microbiota are known to play critical roles in many physiological processes such as metabolism, immunological responses, and intestinal integrity (Quagebeur et al., 2023). In addition, studies have shown that SCFAs produced by the gut microbiota move into the bloodstream and finally reach the brain by penetrating the blood-brain barrier (Kekuda et al., 2013; Oldendorf, 1973). SCFAs are endogenous ligands that regulate gene expression by binding to G protein-coupled receptors (Quagebeur et al., 2023) and attenuating the activity of histone deacetylases (Fischer et al., 2007; Schroeder et al., 2007). Therefore, although the effects of BL on the changes in SCFAs in our animal study were not determined, BL-mediated SCFAs may affect gene regulation related to cognitive impairment in the brain tissue of an AD-like mouse model. A detailed analysis of the BL-induced changes in the gut microbiota and SCFAs will be investigated in our next study to verify the actual mediator that controls BL-mediated anti-AD effects.

## Conclusion

In the present study, we evaluated the *in vivo* efficacy of BL against cognitive impairment using an AD-like mouse model. We found that impairments in short- and long-term memory in ICV A $\beta$ -injected mice were inhibited by the oral administration of BL. Furthermore, the expression of apoptosis-related genes and activation of MAPKs, which are able to upregulate the A $\beta$ -induced neuronal apoptosis, could be attenuated by the oral administration of BL. These results suggest

that BL could be developed as a potent anti-AD agent to ameliorate A $\beta$ -induced cognitive impairment.

## Conflicts of Interest

The authors declare no potential conflicts of interest.

## Acknowledgements

This work was supported by the Post-Doctoral Research Program for the Excellence Institute (2023) of the Incheon National University.

## Author Contributions

Conceptualization: Lee SH. Data curation: Kwon OY. Validation: Choi JK, Kwon OY. Investigation: Choi JK, Kwon OY. Writing - original draft: Lee SH. Writing - review & editing: Choi JK, Kwon OY, Lee SH.

## Ethics Approval

Animal experiments were conducted according to the Incheon National University Guidelines for the Care and Use of Laboratory Animals and approved by the Institutional Animal Care and Use Committee (IACUC) of Incheon National University (INU-ANIM-2919-19).

## References

- Behl C. 2000. Apoptosis and Alzheimer's disease. *J Neural Transm* 107:1325-1344.
- Chaitanya GV, Alexander JS, Babu PP. 2010. Parp-1 cleavage fragments: Signatures of cell-death proteases in neurodegeneration. *Cell Commun Signal* 8:31.
- Cummings J. 2018. Lessons learned from Alzheimer disease: Clinical trials with negative outcomes. *Clin Transl Sci* 11:147-152.
- Drozдов VN, Shikh EV, Astapovskii AA, Khalaidzheva KN, Solovieva SA, Dorogun OB. 2023. Clinical efficacy of a modern probiotic for the correction of intestinal microflora in patients with irritable bowel syndrome with diarrhea and antibiotic-associated diarrhea. *Vopr Pitan* 92:92-103.
- Fang Z, Li L, Zhang H, Zhao J, Lu W, Chen W. 2021. Gut microbiota, probiotics, and their interactions in prevention and treatment of atopic dermatitis: A review. *Front Immunol* 12:720393.
- Fischer A, Sananbenesi F, Wang X, Dobbin M, Tsai LH. 2007. Recovery of learning and memory is associated with chromatin remodelling. *Nature* 447:178-182.
- Hidalgo-Cantabrana C, Delgado S, Ruiz L, Ruas-Madiedo P, Sánchez B, Margolles A. 2017. Bifidobacteria and their health-promoting effects. *Microbiol Spectr* 5:73-98.
- Homayouni A, Bagheri N, Mohammad-Alizadeh-Charandabi S, Kashani N, Mobaraki-Asl N, Mirghafurvand M, Asgharian H, Ansari F, Pourjafar H. 2020. Prevention of gestational diabetes mellitus (GDM) and probiotics: Mechanism of action:

- A review. *Curr Diabetes Rev* 16:538-545.
- Jack CR Jr, Lowe VJ, Weigand SD, Wiste HJ, Senjem ML, Knopman DS, Shiung MM, Gunter JL, Boeve BF, Kemp BJ, Weiner M, Petersen RC, Alzheimer's Disease Neuroimaging Initiative. 2009. Serial PIB and MRI in normal, mild cognitive impairment and Alzheimer's disease: Implications for sequence of pathological events in Alzheimer's disease. *Brain* 132:1355-1365.
- Jakubczyk D, Leszczynska K, Górska S. 2020. The effectiveness of probiotics in the treatment of inflammatory bowel disease (IBD): A critical review. *Nutrients* 12:1973.
- Kekuda R, Manoharan P, Baseler W, Sundaram U. 2013. Monocarboxylate 4 mediated butyrate transport in a rat intestinal epithelial cell line. *Dig Dis Sci* 58:660-667.
- Kim EK, Choi EJ. 2010. Pathological roles of MAPK signaling pathways in human diseases. *Biochim Biophys Acta Mol Basis Dis* 1802:396-405.
- Kim HW, Ju DB, Kye YC, Ju YJ, Kim CG, Lee IK, Park SM, Choi IS, Cho KK, Lee SH, Kim SC, Jung ID, Han SH, Yun CH. 2019. Galectin-9 induced by dietary probiotic mixture regulates immune balance to reduce atopic dermatitis symptoms in mice. *Front Immunol* 10:3063.
- Kim HY, Lee DK, Chung BR, Kim HV, Kim YS. 2016. Intracerebroventricular injection of amyloid- $\beta$  peptides in normal mice to acutely induce Alzheimer-like cognitive deficits. *J Vis Exp* 16:53308.
- Kwon OY, Lee SH. 2020. Ameliorating activity of *Ishige okamurae* on the amyloid beta-induced cognitive deficits and neurotoxicity through regulating ERK, p38 MAPK, and JNK signaling in Alzheimer's disease-like mice model. *Mol Nutr Food Res* 64:1901220.
- Kwon OY, Lee SH. 2021. *Ishige okamurae* suppresses trimethyltin-induced neurodegeneration and glutamate-mediated excitotoxicity by regulating MAPKs/Nrf2/HO-1 antioxidant pathways. *Antioxidants* 10:440.
- Kwon OY, Lee SH. 2022. Animal models of cognitive deficits for probiotic treatment. *Food Sci Anim Resour* 42:981-995.
- Kwon OY, Lee SH. 2023. *Ishige okamurae* attenuates neuroinflammation and cognitive deficits in mice intracerebroventricularly injected with LPS via regulating TLR-4/MyD88-dependent pathways. *Antioxidants* 12:78.
- Kwon OY, Ryu S, Choi JK, Lee SH. 2020. *Smilax glabra* Roxb. Inhibits collagen induced adhesion and migration of PC3 and LNCaP prostate cancer cells through the inhibition of beta 1 integrin expression. *Molecules* 25:3006.
- Lim TJ, Lim S, Yoon JH, Chung MJ. 2021. Effects of multi-species probiotic supplementation on alcohol metabolism in rats. *J Microbiol* 59:417-425.
- Livingston G, Huntley J, Sommerlad A, Ames D, Ballard C, Banerjee S, Brayne C, Burns A, Cohen-Mansfield J, Cooper C, Costafreda SG, Dias A, Fox N, Gitlin LN, Howard R, Kales HC, Kivimäki M, Larson EB, Ogunniyi A, Orgeta V, Ritchie K, Rockwood K, Sampson EL, Samus Q, Schneider LS, Selbaek G, Teri L, Mukadam N. 2020. Dementia prevention, intervention, and care: 2020 Report of the *lancet* commission. *Lancet* 396:413-446.
- Lu Z, Teng Y, Wang L, Jiang Y, Li T, Chen S, Wang B, Li Y, Yang J, Wu X, Cheng W, Cui X, Zhao M. 2022. Abnormalities of hippocampus and frontal lobes in heart failure patients and animal models with cognitive impairment or depression: A systematic review. *PLOS ONE* 17:e0278398.
- Oldendorf WH. 1973. Carrier-mediated blood-brain barrier transport of short-chain monocarboxylic organic acids. *Am J Physiol* 224:1450-1453.
- Park H, Kam TI, Dawson TM, Dawson VL. 2020. Poly (ADP-ribose) (PAR)-dependent cell death in neurodegenerative diseases. *Int Rev Cell Mol Biol* 353:1-29.

- Pascal JM. 2018. The comings and goings of PARP-1 in response to DNA damage. *DNA Repair* 71:177-182.
- Picard C, Fioramonti J, Francois A, Robinson T, Neant F, Matuchansky C. 2005. Review article: Bifidobacteria as probiotic agents: physiological effects and clinical benefits. *Aliment Pharmacol Ther* 22:495-512.
- Quagebeur R, Dalile B, Raes J, Van Oudenhove L, Verbeke K, Vrieze E. 2023. The role of short-chain fatty acids (SCFAs) in regulating stress responses, eating behavior, and nutritional state in anorexia nervosa: Protocol for a randomized controlled trial. *J Eat Disord* 11:191.
- Reiman EM, Quiroz YT, Fleisher AS, Chen K, Velez-Pardo C, Jimenez-Del-Rio M, Fagan AM, Shah AR, Alvarez S, Arbelaez A, Giraldo M, Acosta-Baena N, Sperling RA, Dickerson B, Stern CE, Tirado V, Munoz C, Reiman RA, Huentelman MJ, Alexander GE, Langbaum JB, Kosik KS, Tariot PN, Lopera F. 2012. Brain imaging and fluid biomarker analysis in young adults at genetic risk for autosomal dominant Alzheimer's disease in the presenilin 1 E280A kindred: A case-control study. *Lancet Neurol* 11:1048-1056.
- Reiss AB, Arain HA, Stecker MM, Siegart NM, Kasselmann LJ. 2018. Amyloid toxicity in Alzheimer's disease. *Rev Neurosci* 29:613-627.
- Sahoo G, Samal D, Khandayataray P, Murthy MK. 2023. A review on caspases: Key regulators of biological activities and apoptosis. *Mol Neurobiol* 60:5805-5837.
- Schroeder FA, Lin CL, Crusio WE, Akbarian S. 2007. Antidepressant-like effects of the histone deacetylase inhibitor, sodium butyrate, in the mouse. *Biol Psychiatry* 62:55-64.
- Sh Lapobersky VJ, Neporent MI. 1945. Contribution to the motor function of the small intestine in total resection of the stomach. *Khirurgiia* 1:60-65.
- Sharma VK, Singh TG, Singh S, Garg N, Dhiman S. 2021. Apoptotic pathways and Alzheimer's disease: Probing therapeutic potential. *Neurochem Res* 46:3103-3122.
- Shimohama S. 2000. Apoptosis in Alzheimer's disease: An update. *Apoptosis* 5:9-16.
- Shu Z, Li P, Yu B, Huang S, Chen Y. 2020. The effectiveness of probiotics in prevention and treatment of cancer therapy-induced oral mucositis: A systematic review and *meta*-analysis. *Oral Oncol* 102:104559.
- Soc la K, Doboszewska U, Szopa A, Serefko A, Wlodarczyk M, Zielinska A, Poleszak E, Fichna J, Wlaz P. 2021. The role of microbiota-gut-brain axis in neuropsychiatric and neurological disorders. *Pharmacol Res* 172:105840.
- Sun Y, Liu WZ, Liu T, Feng X, Yang N, Zhou HF. 2015. Signaling pathway of MAPK/ERK in cell proliferation, differentiation, migration, senescence and apoptosis. *J Recept Signal Transduct* 35:600-604.
- Tiwari S, Atluri V, Kaushik A, Yndart A, Nair M. 2019. Alzheimer's disease: Pathogenesis, diagnostics, and therapeutics. *Int J Nanomed* 14:5541-5554.
- Villemagne VL, Burnham S, Bourgeat P, Brown B, Ellis KA, Salvado O, Szoek C, Macaulay SL, Martins R, Maruff P, Ames D, Rowe CC, Masters CL. 2013. Amyloid  $\beta$  deposition, neurodegeneration, and cognitive decline in sporadic Alzheimer's disease: A prospective cohort study. *Lancet Neurol* 12:357-367.
- Wie rs G, Belkhir L, Enaud R, Leclercq S, Philippart de Foy JM, Dequenne I, de Timary P, Cani PD. 2019. How probiotics affect the microbiota. *Front Cell Infect Microbiol* 9:454.
- Yankner BA, Dawes LR, Fisher S, Villa-Komaroff L, Oster-Granite ML, Neve RL. 1989. Neurotoxicity of a fragment of the amyloid precursor associated with Alzheimer's disease. *Science* 245:417-420.
- Yiannopoulou KG, Papageorgiou SG. 2020. Current and future treatments in Alzheimer disease: An update. *J Cent Nerv Syst Dis* 12:1-12.

- You R, Kwon OY, Woo HJ, Lee SH. 2022. Hovenia monofloral honey can attenuate *Enterococcus faecalis* mediated biofilm formation and inflammation. *Food Sci Anim Resour* 42:84-97.
- Zhang F, Zhong R, Cheng C, Li S, Le W. 2021. New therapeutics beyond amyloid- $\beta$  and tau for the treatment of Alzheimer's disease. *Acta Pharmacol Sin* 42:1382-1389.