



Selected Properties of Particleboard Made from Sugar Palm (*Arenga pinnata*) Dregs

Faza AISYADEA¹ · Greitta Kusuma DEWI¹ · Ragil WIDYORINI^{1,†}

ABSTRACT

Dregs from the sugar palm (*Arenga pinnata*) starch industry are considered a waste product of the agricultural industry and have not yet been optimally utilized. Therefore, this study aimed to manufacture particleboards from dregs using different amounts of adhesive and particle size ratios. Sugar palm dregs, which had been separated into fibers and powder/fine particles, were used as raw material for making particleboards. The fiber had an average length of 6.84 ± 3.23 cm, while the fine particles were of a size that passed through size 10 mesh and remained in size 60 mesh. Three ratios of fiber to fine particles (100:0, 75:25, and 50:50 wt%) with three different amounts of sucrose-citric acid adhesive (10, 15, and 20 wt%) were used in this study. Increasing the amount of fine particles and the resin content can improve the physical properties and the internal bond strength of boards made from sugar palm dregs. The fine particles possibly filled the gap between the fibers in the particleboard, while the fibers exhibited a high bending strength. As a result, a high-performance particleboard can be attained by combining the composition ratio of fiber/fine particles and resin content. In this study, particleboards made from fiber/fine particles (75:25 wt%) and adhesive content of 15 wt% and 20 wt% had the mechanical properties that met the requirements of Japanese Industrial Standard (JIS) A 5908 type 18. Sugar palm dregs have the potential to be used as raw materials to create value-added particleboards.

Keywords: sugar palm starch, particle size, dregs, citric acid, sucrose

1. INTRODUCTION

The sugar palm tree (*Arenga pinnata*), a member of the Palmae family, is widespread in Indonesia and other Asian countries and is known as a multi-benefit plant that produces food and non-food products (Ishak *et al.*, 2013; Lim, 2012; Rinawati *et al.*, 2021). In Indonesia, its plantations cover around 64,025 hectares in 29 provinces (Ministry of Agriculture Republic Indonesia, 2021). This tree is a great source of food, beverages,

bioenergy, biofibers, biopolymers, and biocomposites (Ilyas *et al.*, 2020; Mukhtar *et al.*, 2016; Sanyang *et al.*, 2016). Each sugar palm tree has a yield of 1.44 kg/day over four productive months/year (or 172.8 kg/year) for palm sugar and 50–75 kg for starch (Elbersen and Oyen, 2010; Mogeia *et al.*, 1991; Pontoh and Smits, 2015).

Starch is extracted from the inner core of the sugar palm trunk using a grinding process, water pouring, and squeezing technique (Sanyang *et al.*, 2018), in which high-fiber dregs are discarded as organic waste (Agustina

Date Received February 14, 2023, Date Revised April 2, 2023, Date Accepted July 26, 2023

¹ Departments of Forest Product Technology, Faculty of Forestry, Universitas Gadjah Mada, Yogyakarta 55281, Indonesia

[†] Corresponding author: Ragil WIDYORINI (e-mail: rwidyorini@ugm.ac.id, <https://orcid.org/0000-0002-3697-9594>)

© Copyright 2023 The Korean Society of Wood Science & Technology. This is an Open-Access article distributed under the terms of the Creative Commons Attribution Non-Commercial License (<http://creativecommons.org/licenses/by-nc/4.0/>) which permits unrestricted non-commercial use, distribution, and reproduction in any medium, provided the original work is properly cited.

et al., 2022). According to Sudaryono *et al.* (2013) in Hakim *et al.* (2022), material balance in palm sugar industry consists of solid waste/fibre (56%), starch (17%), bark (25%), and others (2%), based on wet conditions. According to Sahari *et al.* (2012), the chemical composition of a sugar palm trunk comprises cellulose (40.56%), holocellulose (61.10%), lignin (46.44%), ash (2.38 %), and extractives (6.30%). On the other hand, the chemical composition of the fiber dregs comprises cellulose (60.61%), hemicellulose (15.74%), and lignin (14.21%; Purnavita and Sriyana, 2013). Sahari *et al.* (2012) evaluated the tensile strength of fibers from sugar palm trunk as 198 N/mm², making it a suitable raw material for particleboard production. Owing to their high fiber content, dregs also appear to be a potential raw material for the manufacturing of particleboard.

Currently, particleboards with natural adhesives are being widely studied and developed owing to the increased public awareness of non-hazardous products as well as governmental regulations. Some natural adhesives/binders have been explored such as lignin, casein, keratin, collagen, wheat gluten, soy-protein, rapeseed-protein, zein-protein, starch, konjac glucomannan, chitosan, sucrose, shellac, gum, rubber, tannin, maltodextrin, gambir, citric acid, and maleic acid, as well as their combinations (Bertaud *et al.*, 2012; Kollmann *et al.*, 1975; Raydan *et al.*, 2021; Sahari *et al.*, 2013; Santoso *et al.*, 2017; Sucipto *et al.*, 2020; Sutiawan *et al.*, 2022; Umemura *et al.*, 2003, 2013; Widyorini *et al.*, 2016a, 2016b, 2018a). Among these adhesives, sucrose/citric acid is promising because of its excellent bonding strength and high availability. This excellent bonding strength is attributed to the esterification reaction between the furan polymer of sucrose dehydration and citric acid, which also forms an esterification reaction with the hydroxyl groups of wood (Ando and Umemura, 2021). The particleboard manufactured using sucrose/citric acid (75/25 wt%) and 30 wt% adhesive content had the properties that met the Japanese Industrial Standard (JIS) A 5908 type 18

(Umemura *et al.*, 2013, 2015). Moreover, the particleboard made from sweet sorghum bagasse with 20 wt% adhesive content at the same sucrose/citric acid ratio had the properties that fulfilled the JIS A 5908 type 18 (Kusumah *et al.*, 2017). In contrast, the properties of the particleboard made from teak wood with the same sucrose/citric acid ratio and pressing conditions satisfied the JIS A 5908 type 8 at 10 wt% adhesive content (Widyorini *et al.*, 2016a). These results showed that the properties of the particleboard were affected by the adhesive content and raw material. Furthermore, increasing the adhesive content tends to improve the mechanical performances of particleboard (Hwang and Oh, 2020a; Maulana *et al.*, 2019).

In addition to the raw material and adhesive content, the size and shape of the particles can affect the properties of particleboard (Sackey *et al.*, 2008). Smaller particles have larger particle surfaces for gluing, a higher number and area of interparticle contact points between adjacent particles, and closer spacing, which in turn can contribute to the overall final panel strength (Gam *et al.*, 2012; Hristov and Vlachopoulos, 2008; Sackey *et al.*, 2008). Owing to their high surface areas, they require more adhesive content for application. Small/fine particles produce higher internal bonding strength, but lower static bending strength than coarse particles (Hwang and Oh, 2021; Karlinasari *et al.*, 2021; Widyorini *et al.*, 2016b). The application of materials with a high length-to-thickness ratio (slenderness ratio) improves the bending properties compared with shorter and thicker materials (Iswanto *et al.*, 2020; Kwon *et al.*, 2013; Rofii *et al.*, 2013, 2016). Hwang and Oh (2020b) and Jamaludin *et al.* (2020) stated that particleboard properties are influenced by the combination ratio of different particle types.

High-quality particleboard properties can be achieved by mixing particles of different shapes and sizes under optimal conditions. This study was conducted to determine the physico-mechanical properties of particleboard

from sugar palm dregs with various ratios of fiber:fine particles (100:0, 75:25, and 50:50 wt%) and amounts of sucrose-citric acid adhesive (10, 15, and 20 wt% based on air-dried particles).

2. MATERIALS and METHODS

2.1. Preparation of materials

Dregs were collected from sugar palm (*A. pinnata*) starch industries in Klaten, Central Java, Indonesia. The dregs were still clumped; therefore, they needed to be separated manually. They were then sieved through a 10-mesh screen. The dregs retained on a 10-mesh screen consisted of fibers with an average length of 6.84 ± 3.23 cm. The particles that passed through the 10 mesh-screen and those retained on the 60-mesh screen were referred to as fine particles, as shown in Fig. 1. All of the materials were then air-dried to a moisture content of approximately 12%. Sucrose (Meade-King Robinson, Liverpool, UK) and citric acid (anhydrous; Weifang Ensign Industry, Weifang, China) were used as adhesives at a 75/25 wt% ratio.

2.2. Chemical composition analysis

The dregs were ground into a powder and prepared for chemical analysis. Ethanol-toluene extractives, cold and hot water extractives, and ash contents were tested according to the American Society for Testing Material (ASTM) standards (ASTM, 2001a, 2001b, 2001c). The lignin content was determined using the Klason method and the holocellulose and alpha-cellulose contents were estimated using Wise's chlorite method (Browning, 1967).

2.3. Manufacture of composite board

The sucrose-citric acid adhesive was sprayed onto the fiber/fine particles at three levels of adhesive contents (10, 15, and 20 wt% based on air-dried particles). The concentration of the adhesive solution was 50 wt%. The fiber/fine particle ratios used in this experiment were 100:0, 75:25, and 50:50 (wt%). The sprayed particles were then oven-dried at 80°C for 4 h to reduce their moisture content (Widyorini *et al.*, 2018b).

The particles were then handformed into a single-layer mat using a forming box. The dimensions of the mat were 25 cm × 25 cm, and the target thickness was

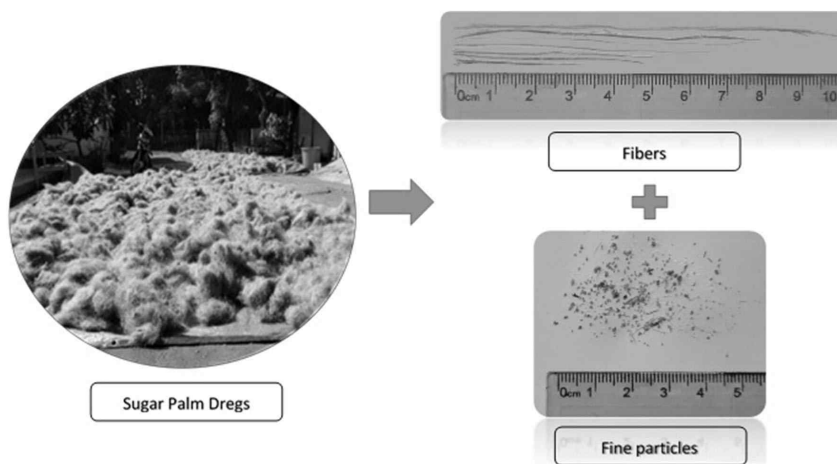


Fig. 1. The dregs of sugar palm industry.

1 cm. The mat was then hot pressed using a three-step method (Widyorini *et al.*, 2018b) with a pressing temperature of 180°C for 10 minutes, respectively. Three replicates for each manufacturing condition were used. All boards were then conditioned under ambient conditions for approximately 7–10 days, prior to the evaluation of the mechanical and physical properties.

2.4. Evaluation of board properties

The boards were evaluated according to the Japanese Industrial Standard for Particleboards (JIS, 2003). The physical properties of the boards included the density, moisture content, thickness swelling (TS), and water absorption (WA). TS and WA were evaluated on a 5 cm × 5 cm × 1 cm specimen from each board after water immersion for 24 h at room temperature. The values were then calculated based on the differences in the thickness and weight of the specimens before and after water immersion.

The bending properties of the boards, *i.e.*, the modulus of rupture (MOR) and modulus of elasticity (MOE), were evaluated by conducting static three-point bending tests on a 200 mm × 50 mm × 10 mm specimen of each board under dry conditions. The effective span and loading speed were set at 150 mm and 10 mm/min, respectively. An internal bond (IB) strength test was conducted using specimens of the same size as those used in the TS test. A universal testing machine (UTM) 3369 (Instron, Norwood, MA, USA) was used to evaluate the mechanical properties. The mechanical properties of the boards were corrected for each target density, based on the specimen densities. Each experiment was performed in triplicate.

Microscopic analysis was performed using a digital microscope (AM413ZT, Dino-Lite, New Taipei City, Taiwan) at 20× magnification. The transverse areas were captured after the IB strength test.

Table 1. Chemical composition of sugar palm starch dregs

| Components | Content (% dry weight) |
|----------------------------|---------------------------|
| Ethanol toluene extractive | 5.15 |
| Cold water extractive | 11.55 |
| Hot water extractive | 13.13 |
| Holocellulose | 75.91 ¹⁾ |
| Hemicellulose | 32.20 ¹⁾ |
| α -Cellulose | 43.71 ¹⁾ |
| Lignin | 26.33 ¹⁾ |
| Ash | 2.03 |

¹⁾ Percentage based on free extractive.

3. RESULTS and DISCUSSION

Table 1 lists the chemical composition of the sugar palm dregs. The results showed that the water extractive was still high, with values of 11.55% for cold water extractive and 13.15% for hot water extractive. The dregs comprised 75.9% holocellulose, 43.7% α -cellulose, 32.2% hemicellulose, and 26% lignin. These results are similar to those for the chemical components of the sugar palm trunk (Sahari *et al.*, 2012). As reported by Sanyang *et al.* (2016), the high cellulose content of sugar palm fibers from the trunk provides better mechanical strength, making them potential material for particleboard applications.

The results showed that the particleboards made from the sugar palm dregs had density values that ranged from 0.73 to 0.75 g/cm³. The densities of the particleboards were lower than the target density because of the board widening after hot pressing. In addition, the moisture content of the particleboards were in the range 7.88%–8.78%, which met the JIS (2003).

The TS and WA have been considered important parameters in describing dimensional stability of the

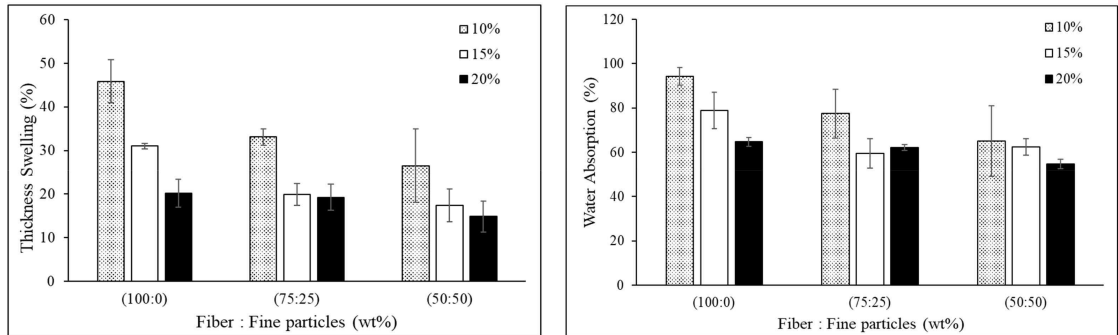


Fig. 2. Thickness swelling and water absorption of particleboard made from the dregs of the sugar palm starch industry. Error bars indicate the SD.

boards. Fig. 2 shows TS and the WA of the particleboard. The range of the WA of the boards was 47.0%–98.7%, whereas the range of the TS of the boards was 12.4%–49.3%, respectively. None of the TS values of the particleboards met the requirements of JIS A 5908. The TS and WA of particleboards made from teak with the same adhesive, pressing temperature, and time were approximately 15% and 40%, respectively (Widyorini *et al.*, 2016a), whereas those of particleboards made from softwood were approximately 50% and 70%, respectively (Umemura *et al.*, 2015). These findings suggest that differences in the properties of the raw materials also affect how adhesives and materials adhere to one another.

This shows that the increase in fine particles caused a decrease in the TS and WA values. This possibly occurred because the fine particles provide a larger contact area among the particles compared to the fiber, thereby resulting in stronger bonding of the particleboard, as also reported by Okuda and Sato (2004). The fine particles were in powder form; therefore, it was easy to fill the gaps between the fibers in the particleboard, as shown in Fig. 3. The results showed that fine particles provided more compact contact between particles [Fig. 3(b) and (c)] than fibers only [Fig. 3(a)]. Therefore, water may not easily break the bonds between

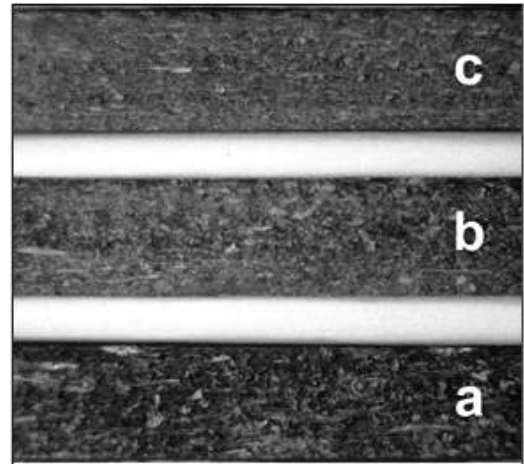


Fig. 3. The side view of particleboards with different particles ratios. (a) (fiber:fine particle) 100:0 wt%; (b) (fiber:fine particle) 75:25 wt%; (c) (fiber:fine particle) 50:50 wt%.

the fibers and particles. However, the TS and WA values of the particleboard made of only coarse particles were better than those made of only fine bamboo particles (Karlinsari *et al.*, 2021).

In addition, as shown in Fig. 2, increasing the resin content of the adhesive also had a significant effect on TS and WA, as reported by Widyorini *et al.* (2016b). Increasing the resin content made the particles more compact, resulting in higher bonding between them and

lowering the TS and WA values. Generally, the main factors influencing the TS were the compressibility of the board, type of adhesive, and resin content. An increase in the resin content led to a decrease in the number of particles. A decrease in the reaction force of the compressed particles and the adhesive coating of the

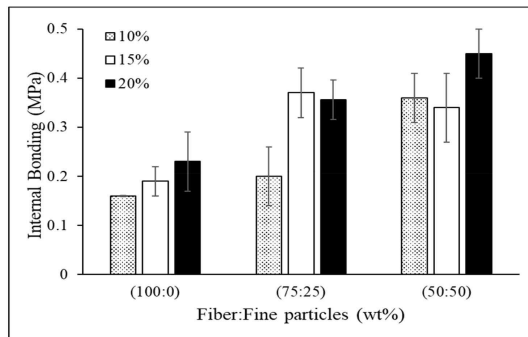


Fig. 4. Internal bonding strength of particleboards made from the dregs of sugar palm starch processing. Error bars indicate the SD.

particles resulted in a reduction in TS (Umemura *et al.*, 2013).

Fig. 4 shows that the value of IB strength of boards had values in the range 0.16–0.49 MPa. All the particleboards met the requirements of the eight types of JIS (2003), and several even met the requirements of all 18 types. The IB strength of teak particleboards was approximately 0.17 MPa (Widyorini *et al.*, 2016a) and that of softwood particleboards was approximately 1 MPa (Umemura *et al.*, 2015) with the same adhesive, pressing temperature and time. Compared with this study, the IB of softwood particleboards was relatively high, which might also be due to the resin content being 30 wt% (Umemura *et al.*, 2015). Adhesiveness was developed by ester linkages formed from the reaction between citric acid and wood components with hydroxyl groups and furan polymers from sucrose dehydration during heat treatment (Ando and Umemura, 2021; Umemura *et al.*, 2015; Widyorini *et al.*, 2016a). Fig. 4 shows that increasing the resin content significantly increases the

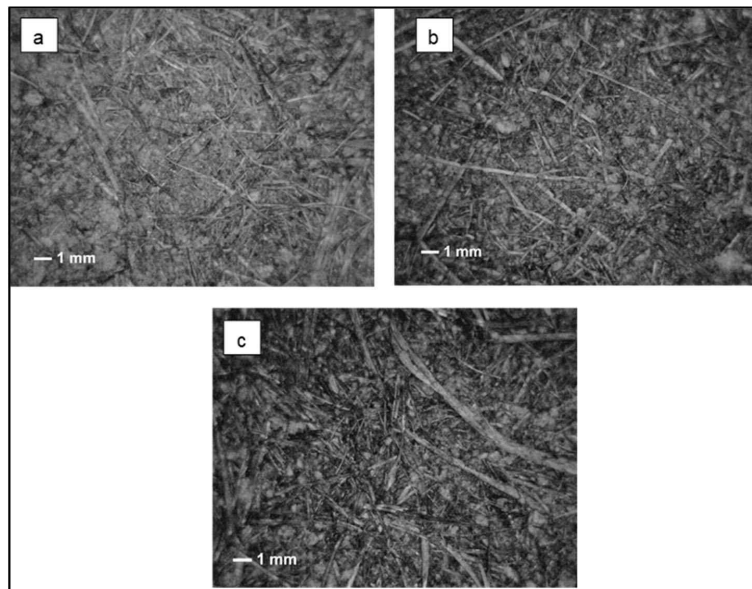


Fig. 5. The transversal area of the 50/50 wt% particleboard with varying adhesive content. (a) 10 wt%, (b) 15 wt%, and (c) 20 wt%.

IB. As shown in Fig. 5, the transverse area of the particleboard with 50/50 wt% (fiber/particle) and 20 wt% resin content was more compact than that with 10 wt%, resulting in a higher IB value.

After mixing with the fine particles, the IB of the particleboard increased. At the same resin content (10 wt%), the particleboard that was made from particle ratio of fiber/particle (50/50 wt%) had an IB value more than twice compared to particleboard that was made from 100% only fibers. Interestingly, the addition of fine particles increased the bonding properties, even at a low resin content. This is probably because the fine particles fill the gaps between the fibers, resulting in a more compact and larger bonding contact area, as shown in Figs. 3 and 6. Karlinasari *et al.* (2021) found that boards made with coarse particles had lower IB values than those made with fine particles. It is well known that the particle size and geometry play a significant role in determining the properties of the boards. As mentioned by Umemura *et al.* (2015), IB strength is influenced by

the adhesiveness of the inner layer of the board. In addition, fine particles that provide large surface areas are important for obtaining high internal bonding strength. This also indicates that the combination of surface area and resin content affected the properties of the board.

Fig. 7 shows the MOR and MOE values of the particleboard made from sugar palm dregs with various fiber/fine particle ratios and resin contents. The MOR values were in the range 13.6–25.2 MPa, while the MOE values were in the range 2.5–4.7 GPa. The results showed that the bending strength of the particleboard increased with increasing fiber and resin content, as mentioned by Iswanto *et al.* (2020) and Widyorini *et al.* (2016b). All boards meet the requirements for Type 13 (min. 13 MPa for the MOR and 2.5 GPa for MOE) of JIS (2003). In addition, some boards with fiber/fine particle ratio (75:25) with 15% and 20% adhesive contents, as well as the board with fiber/fine particle ratio (100:0) with 20% adhesive content, met the JIS A 5908 requirement of type 18 (min. 18 MPa for MOR and 3 GPa for MOE).

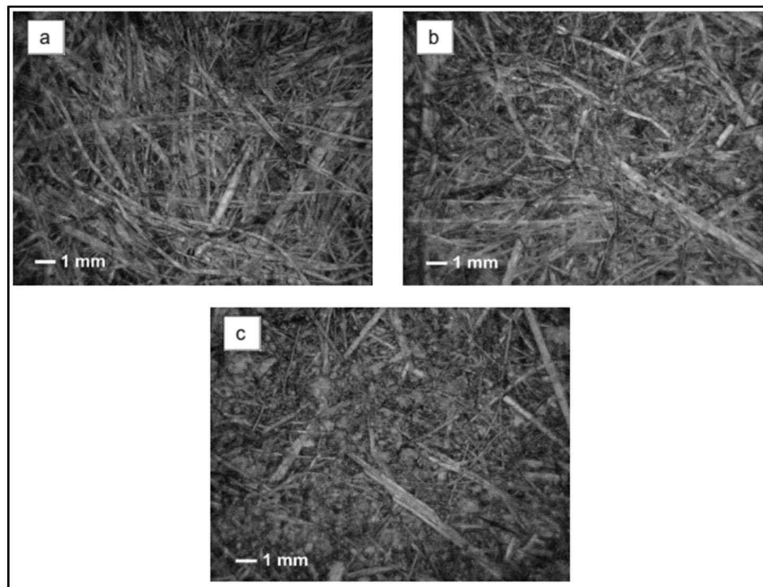


Fig. 6. The transversal area of particleboards with different particles ratios. (a) (fiber:particle) 100:0 wt%; (b) (fiber:particle) 75:25 wt%; (c) (fiber:particle) 50:50 wt%.

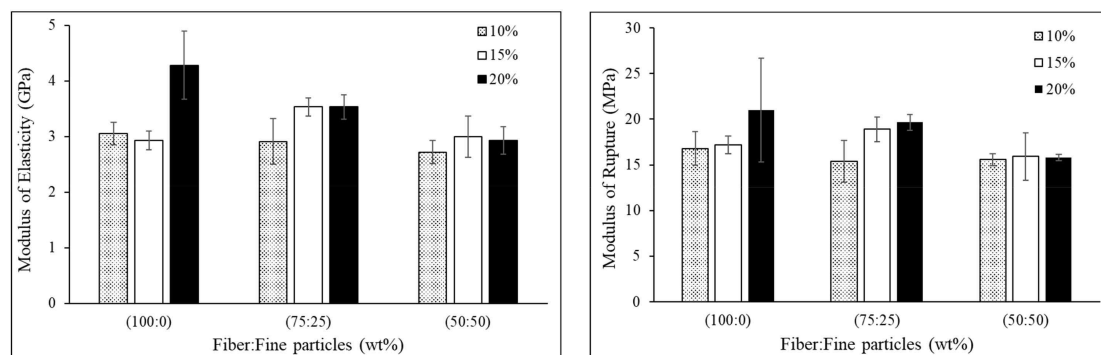


Fig. 7. Modulus of rupture and modulus of elasticity of particleboards made from the dregs of sugar palm starch processing. Error bars indicate the SD.

Under the same adhesive and pressing conditions, these boards had higher bending strengths than teak particleboards (Widyorini *et al.*, 2016a), and were similar to softwood particleboards (Umemura *et al.*, 2015). The MOR and MOE values of teak particleboards were around 10 MPa and 2.5 GPa, respectively, while that of softwood particleboards were around 20 MPa and 4.5 GPa, respectively (Umemura *et al.*, 2015; Widyorini *et al.*, 2016a). The MOR and MOE values for the isocyanate-bonded boards made from bamboo particles (Karlinasari *et al.*, 2021) were also lower than those obtained in this study. This indicated that the dregs of *A. pinnata* starch industry could be a prospective material for particleboard.

4. CONCLUSIONS

In this study, sugar palm dregs were used as the material for creating particleboard. The dregs consisted of short fibers and powder/fine particles. The properties of particleboards made from different compositions of fiber and fine particles, as well as different resin contents, were evaluated. Increasing the fine particle and resin content could reduce the TS and WA values and increase the IB strength of boards made from sugar palm dregs. The fine particles appeared to fill the gaps between the

fibers in the particleboard, resulting in good compatibility. However, the fibers exhibited a higher bending strength than the fine particles. Therefore, a high-performance particleboard can be produced by combining the composition ratio of fiber/fine particles and resin content. In this study, particleboards made from fiber/fine particles (75:25 wt%) and adhesive content of 15 wt% and 20 wt% had mechanical properties that met the requirements of JIS A 5908 type 18.

CONFLICT of INTEREST

No potential conflict of interest relevant to this article was reported.

ACKNOWLEDGMENT

The authors are grateful to the Universitas Gadjah Mada Republic of Indonesia for funding this project under the Final Task Recognition 2021 research grant scheme.

REFERENCES

- Agustina, W., Aditiawati, P., Kusumah, S.S. 2022. Myco-briquettes from sugar palm dregs fibre, cassa-

- va dregs and coconut shell charcoal with solid substrate fermentation technology. IOP Conference Series: Earth and Environmental Science 963: 012016.
- Ando, D., Umemura, K. 2021. Chemical structures of adhesive and interphase parts in sucrose/citric acid type adhesive wood-based molding derived from Japanese cedar (*Cryptomeria japonica*). *Polymers* 13(23): 4224.
- American Society for Testing and Materials [ASTM]. 2001a. Standard Test Method for Ash in Wood. ASTM D1102-84. ASTM International, West Conshohocken, PA, USA.
- American Society for Testing and Materials [ASTM]. 2001b. Standard Test Method for Ethanol-Toluene Solubility of Wood. ASTM D1107-96. ASTM International, West Conshohocken, PA, USA.
- American Society for Testing and Materials [ASTM]. 2001c. Standard Test Methods for Water Solubility of Wood. ASTM D1110-84. ASTM International, West Conshohocken, PA, USA.
- Bertaud, F., Tapin-Lingua, S., Pizzi, A., Navarrete, P., Petit-Conil, M. 2012. Development of green adhesives for fibreboard manufacturing, using tannins and lignin from pulp mill residues. *Cellulose Chemistry and Technology* 46(7-8): 449-455.
- Browning, B.L. 1967. *Methods of Wood Chemistry*. Interscience, New York, NY, USA.
- Elbersen, W., Oyen, L. 2010. Sugar Palm (*Arenga pinnata*): Potential of Sugar Palm for Bio-ethanol Production. FACT-Foundation, Wageningen, Netherlands.
- Gam, S., Meth, J.S., Zane, S.G., Chi, C., Wood, B.A., Winey, K.I., Clarke, N., Composto, R.J. 2012. Polymer diffusion in a polymer nanocomposite: Effect of nanoparticle size and polydispersity. *Soft Matter* 8(24): 6512-6520.
- Hakim, H.M.A., Supartono, W., Ainuri, M., Karyadi, J.N.W. 2022. Hydrothermal pretreatment optimization of hemicellulose dissolution of sugar palm starch industrial waste. IOP Conference Series: Earth and Environmental Science 1116: 012077.
- Hristov, V., Vlachopoulos, J. 2008. Effects of polymer molecular weight and filler particle size on flow behavior of wood polymer composites. *Polymer Composites* 29(8): 831-839.
- Hwang, J.W., Oh, S.W. 2020a. Mechanical performances of boards made from carbonized rice husk and sawdust: The effect of resin and sawdust addition ratio. *Journal of the Korean Wood Science and Technology* 48(5): 696-709.
- Hwang, J.W., Oh, S.W. 2020b. Properties of board manufactured from sawdust, ricehusk and charcoal. *Journal of the Korean Wood Science and Technology* 48(1): 61-75.
- Hwang, J.W., Oh, S.W. 2021. Bending strength of board manufactured from sawdust, rice husk and charcoal. *Journal of the Korean Wood Science and Technology* 49(4): 315-327.
- Ilyas, R.A., Sapuan, S.M., Kadier, A., Krishnan, S., Atikah, M.S.N., Ibrahim, R., Nazrin, A., Syafiq, R., Misri, S., Huzaifah, M.R.M., Hazrol, M.D. 2020. Mechanical Testing of Sugar Palm Fiber Reinforced Sugar Palm Biopolymer Composites. In: *Advanced Processing, Properties, and Applications of Starch and Other Bio-Based Polymers*, Ed. by Al-Oqla, F.M. and Sapuan, S.M. Elsevier, Amsterdam, Netherlands.
- Ishak, M.R., Sapuan, S.M., Leman, Z., Rahman, M.Z.A., Anwar, U.M.K., Siregar, J.P. 2013. Sugar palm (*Arenga pinnata*): Its fibres, polymers and composites. *Carbohydrate Polymers* 91(2): 699-710.
- Iswanto, A.H., Hakim, A.R., Azhar, I., Wirjosentono, B., Prabuningrum, D.S. 2020. The physical, mechanical, and sound absorption properties of sandwich particleboard (SPb). *Journal of the Korean Wood Science and Technology* 48(1): 32-40.
- Jamaludin, M.A., Bahari, S.A., Zakaria, M.N., Saipolbahri,

- N.S. 2020. Influence of rice straw, bagasse, and their combination on the properties of binderless particleboard. *Journal of the Korean Wood Science and Technology* 48(1): 22-31.
- Japanese Industrial Standard [JIS]. 2003. Particleboards. JIS A 5908. Japanese Standard Association, Tokyo, Japan.
- Karlinasari, L., Sejati, P.S., Adzkiya, U., Arinana, A., Hiziroglu, S. 2021. Some of the physical and mechanical properties of particleboard made from betung bamboo (*Dendrocalamus asper*). *Applied Sciences* 11(8): 3682.
- Kollmann, F.F.P., Kuenzi, E.W., Stamm, A.J. 1975. *Principles of Wood Science and Technology: II. Wood based Materials*. Springer, New York, NY, USA.
- Kusumah, S., Arinana, A., Hadi, Y., Guswenrivo, I., Yoshimura, T., Umemura, K., Tanaka, S., Kanayama, K. 2017. Utilization of sweet sorghum bagasse and citric acid in the manufacturing of particleboard. III: Influence of adding sucrose on the properties of particleboard. *BioResources* 12(4): 7498-7514.
- Kwon, J.H., Ayrlimis, N., Han, T.H. 2013. Enhancement of flexural properties and dimensional stability of rice husk particleboard using wood strands in face layers. *Composites Part B: Engineering* 44(1): 728-732.
- Lim, T.K. 2012. *Edible Medicinal and Non-Medicinal Plants: Volume 1, Fruits*. Springer, New York, NY, USA.
- Maulana, S., Gumelar, Y., Fatrawana, A., Maulana, M.I., Hidayat, W., Sumardi, I., Wistara, N.J., Lee, S.H., Kim, N.H., Febrianto, F. 2019. Destructive and non-destructive tests of bamboo oriented strand board under various shelling ratios and resin contents. *Journal of the Korean Wood Science and Technology* 47(4): 519-532.
- Ministry of Agriculture Republic Indonesia. 2021. *Statistical of National Non Leading Estate Crops Commodity 2020–2022*. Ministry of Agriculture Republic Indonesia, Jakarta, Indonesia.
- Mogea, J., Seibert, B., Smits, W. 1991. Multipurpose palms: The sugar palm (*Arenga pinnata* (Wurmb Merr.). *Agroforestry Systems* 13: 111-129.
- Mukhtar, I., Leman, Z., Ishak, M.R., Zainudin, E.S. 2016. Sugar palm fibre and its composites: A review of recent developments. *BioResources* 11(4): 10756-10782.
- Okuda, N., Sato, M. 2004. Manufacture and mechanical properties of binderless boards from kenaf core. *Journal of Wood Science* 50: 53-61.
- Pontoh, J., Smits, W.T.M. 2015. Some aspects of carbohydrate physiology in sugar palm (*Arenga pinnata* Merr.). *IOSR Journal of Agriculture and Veterinary Science* 8(8): 13-20.
- Purnavita, S., Sriyana, H.Y. 2013. Production of bio-ethanol from Palm (*Arenga pinnata*) starch solid waste enzymatically using cellulose-extract termite. *Jurnal Teknologi Pangan dan Hasil Pertanian* 8(2): 54-60.
- Raydan, N.D.V., Leroyer, L., Charrier, B., Robles, E. 2021. Recent advances on the development of protein-based adhesives for wood composite materials: A review. *Molecules* 26(24): 7617.
- Rinawati, D.Y., Reflinur, Dinarti, D., Sudarsono. 2021. Genetic diversity of sugar palm (*Arenga pinnata*) derived from nine regions in Indonesia based on SSR markers. *Biodiversitas* 22(9): 3749-3755.
- Rofii, M.N., Prayitno, T.A., Suzuki, S. 2016. Dynamic modulus of three-layer boards with different furnish and shelling ratio. *Journal of the Korean Wood Science and Technology* 44(2): 274-282.
- Rofii, M.N., Yumigeta, S., Suzuki, S., Prayitno, T.A. 2013. Effects of shelling ratio and particle characteristic on physical properties of three-layered particleboard made from different wood species. *Wood Research Journal* 4(1): 25-30.
- Sackey, E.K., Semple, K.E., Oh, S.W., Smith, G.D.

2008. Improving core bond strength of particleboard through particle size redistribution. *Wood and Fiber Science* 40(2): 214-224.
- Sahari, J., Sapuan, S.M., Zainudin, E.S., Maleque, M.A. 2012. Sugar palm tree: A versatile plant and novel source for biofibres, biomatrices, and biocomposites. *Polymers from Renewable Resources* 3(2): 61-78.
- Sahari, J., Sapuan, S.M., Zainudin, E.S., Maleque, M.A. 2013. Mechanical and thermal properties of environmentally friendly composites derived from sugar palm tree. *Materials & Design* 49: 285-289.
- Santoso, M., Widyorini, R., Prayitno, T.A., Sulisty, J. 2017. Bonding performance of maltodextrin and citric acid for particleboard made from nipa fronds. *Journal of the Korean Wood Science and Technology* 45(4): 432-443.
- Sanyang, M.L., Ilyas, R.A., Sapuan, S.M., Jumaidin, R. 2018. Sugar Palm Starch-Based Composites for Packaging Applications. In: *Bionanocomposites for Packaging Applications*, Ed. by Jawaid, M. and Swain, S.K. Springer, Cham, Switzerland.
- Sanyang, M.L., Sapuan, S.M., Jawaid, M., Ishak, M.R., Sahari, J. 2016. Recent developments in sugar palm (*Arenga pinnata*) based biocomposites and their potential industrial applications: A review. *Renewable and Sustainable Energy Reviews* 54: 533-549.
- Sucipto, T., Widyorini, R., Prayitno, T.A., Lukmandaru, G. 2020. Properties of a new adhesive composed of gambir-sucrose. *Journal of the Korean Wood Science and Technology* 48(3): 303-314.
- Sutiawan, J., Hadi, Y.S., Nawawi, D.S., Abdillah, I.B., Zulfiana, D., Lubis, M.A.R., Nugroho, S., Astuti, D., Zhao, Z., Handayani, M., Lisak, G., Kusumah, S.S., Hermawan, D. 2022. The properties of particleboard composites made from three sorghum (*Sorghum bicolor*) accessions using maleic acid adhesive. *Chemosphere* 290: 133163.
- Umemura, K., Inoue, A., Kawai, S. 2003. Development of new natural polymer-based wood adhesives I: Dry bond strength and water resistance of konjac glucomannan, chitosan, and their composites. *Journal of Wood Science* 49: 221-226.
- Umemura, K., Sugihara, O., Kawai, S. 2013. Investigation of a new natural adhesive composed of citric acid and sucrose for particleboard. *Journal of Wood Science* 59: 203-208.
- Umemura, K., Sugihara, O., Kawai, S. 2015. Investigation of a new natural adhesive composed of citric acid and sucrose for particleboard II: Effects of board density and pressing temperature. *Journal of Wood Science* 61: 40-44.
- Widyorini, R., Dewi, G.K., Nugroho, W.D., Prayitno, T.A., Jati, A.S., Tejolaksono, M.N. 2018a. Properties of citric acid-bonded composite board from elephant dung fibers. *Journal of the Korean Wood Science and Technology* 46(2): 132-142.
- Widyorini, R., Nugraha, P.A., Rahman, M.Z.A., Prayitno, T.A. 2016a. Bonding ability of a new adhesive composed of citric acid-sucrose for particleboard. *BioResources* 11(2): 4526-4535.
- Widyorini, R., Umemura, K., Isnain, R., Putra, D.R., Awaludin, A., Prayitno, T.A. 2016b. Manufacture and properties of citric acid-bonded particleboard made from bamboo materials. *European Journal of Wood and Wood Product* 74: 57-65.
- Widyorini, R., Umemura, K., Septiano, A., Soraya, D.K., Dewi, G.K., Nugroho, W.D. 2018b. Manufacture and properties of citric acid-bonded composite board made from salacca frond: Effects of maltodextrin addition, pressing temperature, and pressing method. *BioResources* 13(4): 8662-8676.