

TECHNICAL REPORT

Measuring Glutathione Regeneration Capacity in Stem Cells

Jihye Kim^{1,*}, Yi-Xi Gong^{1,2,*}, Eui Man Jeong^{1,2}

¹*Department of Pharmacy, College of Pharmacy, Jeju Research Institute of Pharmaceutical Sciences, Jeju National University, Jeju, Korea*

²*Interdisciplinary Graduate Program in Advanced Convergence Technology and Science, Bio-Health Materials Core-Facility Center and Practical Translational Research Center, Jeju National University, Jeju, Korea*

Glutathione (GSH) is a chief cellular antioxidant, affecting stem cell functions. The cellular GSH level is dynamically altered by the redox buffering system and transcription factors, including NRF2. Additionally, GSH is differentially regulated in each organelle. We previously reported a protocol for monitoring the real-time GSH levels in live stem cells using the reversible GSH sensor FreSHtracer. However, GSH-based stem cell analysis needs to be comprehensive and organelle-specific. Hence, in this study, we demonstrate a detailed protocol to measure the GSH regeneration capacity (GRC) in living stem cells by measuring the intensities of the FreSHtracer and the mitochondrial GSH sensor MitoFreSHtracer using a high-content screening confocal microscope. This protocol typically analyses the GRC in approximately 4 h following the seeding of the cells onto plates. This protocol is simple and quantitative. With some minor modifications, it can be employed flexibly to measure the GRC for the whole-cell area or just the mitochondria in all adherent mammalian stem cells.

Keywords: Glutathione, Stem cells, FreSHtracer, Glutathione regeneration capacity

Introduction

Glutathione (GSH) is a major thiol-based cellular antioxidant that indicates cellular redox equilibrium (1, 2). Recently, we reported that GSH levels determine stem cell functions and therapeutic efficacy in asthma and graft-versus-host diseases (3-5). Thus, monitoring GSH levels is

crucial for the development of therapeutic stem cells. However, cellular GSH levels change dynamically based on culture conditions such as confluence and passage number (3). GSH is consumed by oxidants and immediately regenerated through the redox buffering system by glutathione reductase and NADPH (1). Stem cells defective in GSH regeneration exhibit reduced functional activity and therapeutic effects (3).

GSH is synthesized by glutamate-cysteine ligase and glutathione synthetase, which are expressed by transcription factors (such as NRF2) under oxidative stress. GSH is synthesized in the cytosol and distributed in subcellular organelles such as nucleus, mitochondria, endoplasmic reticulum, and Golgi apparatus where it functions differentially in each organelle. For example, mitochondrial GSH (mGSH) plays crucial roles in cell death and human diseases (6, 7). Therefore, the comprehensive and organelle-specific GSH assay methods need to be developed for monitoring GSH levels in stem cells.

For the first time, we have developed Fluorescent real-time thiol tracer (FreSHtracer) for real-time monitoring

Received: April 20, 2023, Revised: April 25, 2023,
Accepted: May 6, 2023, Published online: June 30, 2023

Correspondence to **Eui Man Jeong**

Department of Pharmacy, College of Pharmacy, Jeju Research Institute of Pharmaceutical Sciences, Jeju National University, 102 Jejudaehak-ro, Jeju 63243, Korea

Tel: +82-64-754-8197, Fax: +82-64-755-6263

E-mail: emjeong@jejunu.ac.kr

*These authors contributed equally to this work.

© This is an open-access article distributed under the terms of the Creative Commons Attribution Non-Commercial License (<http://creativecommons.org/licenses/by-nc/4.0/>), which permits unrestricted non-commercial use, distribution, and reproduction in any medium, provided the original work is properly cited.

Copyright © 2023 by the Korean Society for Stem Cell Research

of GSH in living cells (3, 8, 9). FreSHtracer is a ratio-metric probe that reversibly and rapidly reacts with GSH (Fig. 1a). Since it is cellular membrane permeable, FreSH-tracer-based GSH monitoring of living cells is feasible (Fig. 1b). FreSHtracer is modifiable and can be used for monitoring of organelle-specific GSH such as MitoFreSH-tracer for mGSH (3, 9). Thus, FreSHtracer-based monitoring is an ideal GSH-monitoring system suitable for living cells.

In this report, we describe a method for quantifying the GSH regeneration capacity (GRC) in cultured stem cells using FreSHtracer and MitoFreSHtracer. This protocol has been devised to measure GRC levels in human umbilical cord-derived mesenchymal stem cells (hUC-MSCs) and human bone marrow-derived mesenchymal stem cells (hBM-MSCs). Furthermore, we believe that with minor modifications detailed here, this protocol can be applied to all adherent cultured mammalian cells.

Materials and Methods

Reagents

- FreSHtracer (cat. No. F-402, Cell2in, Korea).
- MitoFreSHtracer (cat. No. M-377, Cell2in).
- Cells of interest: hUC-MSCs (10) and hBM-MSCs (cat. No. PT-2501, Lonza).

CAUTION: These cells need to be regularly monitored

- to ensure that they are free of *Mycoplasma* infection.
- Minimum Essential Medium (MEM) Alpha (cat. No. 12561056, Gibco).
- Fetal bovine serum (FBS; cat. No. 16000044, Gibco).
- Penicillin/streptomycin, 100× (cat. No. 15140122, Gibco).
- Mesenchymal stem cell basal medium (MSCBM; cat. No. PT-3238, Lonza).
- MSCGM SingleQuats (cat. No. PT-4105, Lonza).
- Hanks' Balanced Salt Solution (HBSS; cat. No. LB 003-02, WELGENE).
- Dimethyl sulfoxide (DMSO; cat. No. 1.02931.1000, Merk Millipore).
- Dulbecco's Phosphate buffered saline (PBS) 1× sterile solution (DPBS, pH 7.4; cat. No. LB 001-02, WELGENE).
- HEPES (cat. No. 25-060-Cl, CORNING).
- TrypLE™ Express Enzyme, 1×, no phenol red (cat. No. 12604-013, Gibco).
- Trypan blue (cat. No. T8154, Sigma Aldrich).
- Diamide (DA; cat. No. D3648, Sigma-Aldrich).
- Water, Ultra Pure (cat. No. W2006, Biosesang).
- Happy cell (incubator water; cat. No. BHC002, Biomax).
- N-Ethylmaleimide (NEM; cat. No. E1271, Sigma-Aldrich).

Equipment

- High-content screening (HCS) microscopy (Operetta,

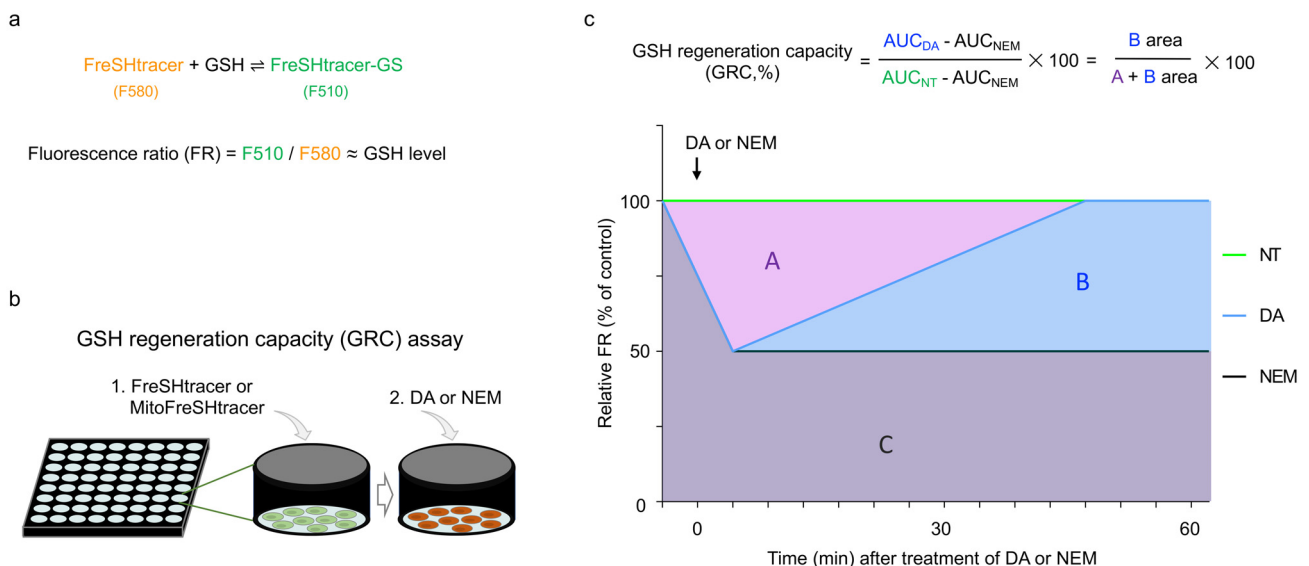


Fig. 1. FreSHtracer-based glutathione regeneration capacity (GRC) assay. (a) A reaction equation for FreSHtracer and glutathione (GSH). F510 (Ex430-510), GSH unbound signal; F580 (Ex520-Em580), GSH bound signal. Fluorescence ratio of FreSHtracer (FR, F510/F580) is proportional to GSH level. (b) Experimental overview for quantifying GRC using FreSHtracer or MitoFreSHtracer. Cells loaded with FreSHtracer or MitoFreSHtracer are observed after treatment with diamide (DA) or N-ethylmaleimide (NEM). (c) GRC was quantified on the basis of the area under the curves (AUC) after non-treatment (A+B+C area), treatment of DA (for GRC, B+C area) and NEM (for the basal thiol level in cells, C area). The ratio of B area and A plus B area is assumed to be GRC.

PerkinElmer) was performed using the Harmony High-Content Imaging and Analysis Software (PerkinElmer).

- Centrifuge (Eppendorf, cat. No. 5810R).
- Centrifuge tube (15 ml; cat. No. 50015, SPL).
- Centrifuge tube (50 ml; cat. No. 50050, SPL).
- Cell culture dish (100 mm; cat. No. 430167, Corning).
- A Pipet-Aid XP (cat. No. 4-000-201-E, Drummond Scientific Co., Ltd.).
- Serological pipette (cat. No. 91005, 91010, 91025; SPL).
- Micropipettes (cat. No. 4641060, 4641080, 4641100; Thermo Scientific).
- Multi Channel Pipettors, 10~100 μ l (cat. No. 312200 0043, Eppendorf).
- Micropipette tips (cat. No. 15730, 10040, Sorenson).
- Reservoir (cat. No. 23050, SPL).
- 0.2 μ m syringe filter (cat. No. STI16534-K, Sartorius).
- 96-well flat bottom black polystyrene cell culture plate (cat. No. 655090, Greiner Bio-One).
- Hemocytometer (cat. No. 0610039094, Marienfeld).
- Aspiration pump (cat. No. JSBS-5000, JRS).
- Fluorescence-activated cell sorting (FACS) tubes (5 ml Polystyrene Round-Bottom Tube, 12 \times 75 mm; cat. No. 352054, FALCON).
- FACS filter tubes (5 ml, polystyrene round-bottomed tube with cell-strainer cap; cat. No. 352235, FALCON).
- Flow cytometer (BD FACS LSRFortessa).

Reagent setup

FreSHtracer and MitoFreSHtracer: The stock solutions were prepared as described previously (10).

Culture medium: hUC-MSCs were cultured in MEM Alpha supplemented with 10% FBS, 100 U/ml penicillin, and 100 μ g/ml streptomycin. The hBM-MSCs were incubated in MSCBM supplemented with MSCGM SingleQuats. The medium need to be stored at 4°C until expiration.

FACS solution: For flow cytometry, the cells were suspended and analyzed in DPBS containing 2% FBS.

Equipment setup

HCS microscopy system for measuring GRC: The confocal imaging system consists of Operetta High-Content Imaging System with \times 200 or \times 400 magnifications. Fluorescence images were detected at emission (Em) wavelengths in the range of 500~540 and 560~630 nm and excitation (Ex) wavelengths in the range of 410~430 and 490~510 nm. These measurements were used to obtain the fluorescence ratio (F510/F580, FR) for FreSHtracer or MitoFreSHtracer (4, 9). The HCS instrument was prewarmed for at least 30 min.

Software for GRC analysis: The fluorescence intensities were determined using Harmony High-Content

Imaging and Analysis Software 4.1. The FR values per well were calculated by dividing the F510 (Ex410~430, Em460~540) by the F580 (Ex490~510, Em560~630) intensities. The area under the curve (AUC) values over time were determined using GraphPad Prism 8.0 software (GraphPad Software). The GRC was calculated using the formula shown in Fig. 1c.

Flow cytometry: A flow cytometry system was used to obtain the FR values, as previously described (9). Briefly, the cells were loaded with 5 μ M of FreSHtracer or MitoFreSHtracer and subjected to analysis using the two channels of F510 (Ex405, Em475~575) and F580 (Ex488, Em550~600 or Ex561, Em567~597) and gating with forward scatter area and side scatter area/height/width. The mean and heterogeneity of the FR values were evaluated by applying the geometric mean and robust coefficient of variation, respectively, using the FlowJo program.

Statistical analysis

The data were analyzed using a two-sided t-test for single pairwise comparison and a nonparametric Mann-Whitney U test or analysis of variance (ANOVA) (one- or two-way) with a Bonferroni post hoc test for multiple comparisons. All statistical analyses were performed using GraphPad Prism software (version 8.0; GraphPad Software, San Diego, CA, USA).

Procedure

GRC measurement in living stem cells using HCS microscopy

- 1 | The cells of interest were plated on the 96-well flat bottom black polystyrene cell culture plates.
 - ▲ CRITICAL STEP: Adjusting the cell seeding number is critical because confluency regulates the intracellular GSH levels (3). In the case of the hUC-MSCs and hBM-MSCs, they were seeded onto the plates at a density of $3\sim 4\times 10^3$ cells/well in 100 μ l culture medium in each well for 1 day.
- 2 | FreSHtracer (option A) or MitoFreSHtracer (option B) was added onto the cells, as previously described (10). Briefly, (A) the cells are incubated with 5 μ M of FreSHtracer for 1.5 h at 37°C and 5% CO₂. Then, the GRC was measured. (B) The cells were incubated with 10 μ M MitoFreSHtracer for 1.5 h at 37°C and 5% CO₂. The cells were washed twice with HBSS, and 2 ml of a new medium without MitoFreSHtracer was added.
- 3 | An HBSS-based solution containing 10 mM HEPES was prepared for performing HCS microscopy. (A) (i) A dilution solution containing 5 μ M FreSH-

tracer in the HBSS-based solution was used.
 (ii) Oxidant solutions contained 0.1 mM NEM or various concentrations of DA in the dilution solution were used.
 (B) (i) The HBSS-based solution was used as the washing and dilution solutions.
 (ii) Either a 0.1 mM NEM or various concentrations of DA in the HBSS-based solution were used as oxidant solutions.

▲ **CRITICAL STEP:** As NEM vapor can affect the quality of the other solutions used for cellular GSH measurements, the NEM working solution was prepared separately from the other solutions.

● **WARNING:** As continuous inhalation of NEM vapor may cause corrosive injuries to the upper airways and lungs, caution must be exercised when handling the NEM solution.

- 4 | All solutions were poured into the reservoirs or new 96-well plates to enable easy handling of the multi Channel pipettors.
- 5 | The F510 and F580 intensities in each well were examined using HCS microscopy.
 - ▲ **CRITICAL STEP:** The fluorescence intensities that generally represent cell count/well should not be differ among the wells.
- 6 | The culture media were suctioned out of the wells using vacuum generated by an aspiration pump.

(B) The cells were washed twice with HBSS.

- 7 | Next, 40 μ l of oxidant solution/well was added immediately using multi Channel pipettors. The cells were incubated for 10 min at 37°C.
- 8 | Following incubation, 160 μ l of dilution solution was added per well.
- 9 | The F510 and F580 intensities/well were measured using HCS microscopy every 3 min for 1 h.

Timing

- Step 1, cell plating: 1 day
- Step 2, loading probes into cells: 1.5 h
- Steps 3~9, measuring GRC in living cells: <2 h

Results

Establishment of GRC assay

hUC-MSCs were used for establishing the GRC assay. FreSHtracer-stained cells were treated with the indicated concentrations of DA or NEM (0.1 mM), and the fluorescence intensities of the cells were observed using confocal microscopy (Fig. 2a and 2b). As NEM is irreversibly incorporated into thiols in cells, the NEM-treated group was used to estimate the cellular basal FR values. The FR values were plotted over time for approximately 1 h (Fig. 2c and 2d). The GRC was determined by dividing the difference of the AUCs of the non-treated group and 0.1 mM

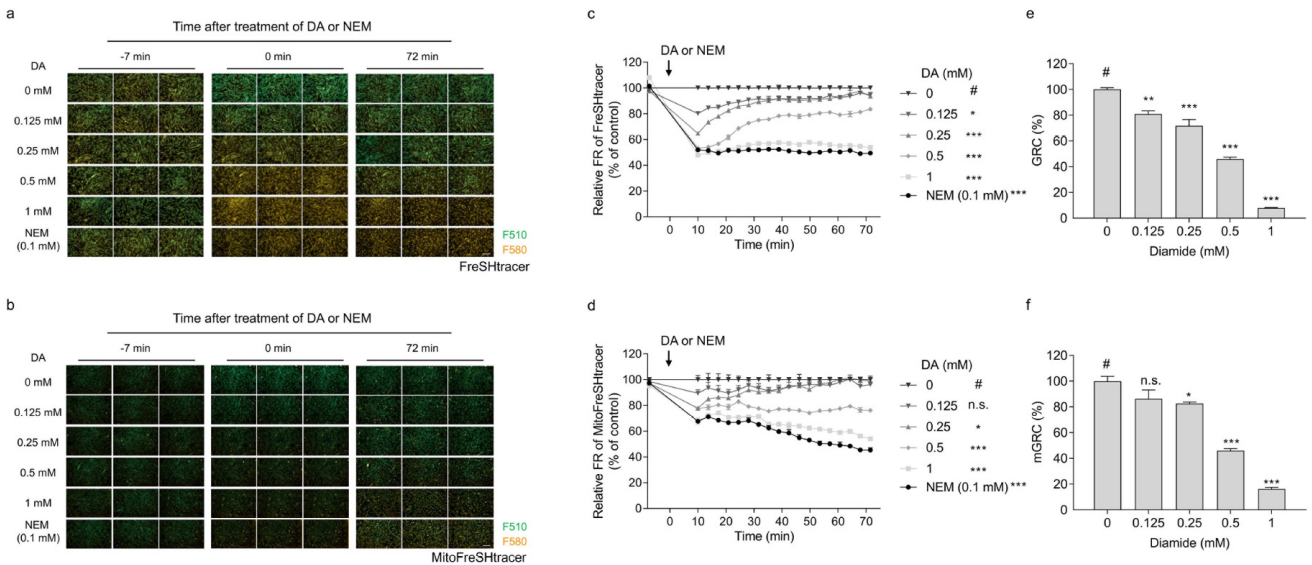


Fig. 2. GRC assay for hUC-MSC using FreSHtracer and MitoFreSHtracer. (a~c) FreSHtracer- or (d~f) MitoFreSHtracer- loaded hUC-MSCs were treated with 0, 0.125, 0.25, 0.5, and 1 mM of diamide (DA) or 0.1 mM *N*-ethylmaleimide (NEM), and analyzed using fluorescence confocal microscopy. (a, b) Representative images of confocal microscopy are shown with $\times 100$ magnification. Scale bars=100 μ m. (c, d) Kinetics of the FR levels (F510/F580 ratio) were plotted over time. (e, f) The GRC levels were calculated. Error bars represent means \pm SEM. n.s.: not significant, #: control group. * $p < 0.05$, ** $p < 0.01$, *** $p < 0.001$.

NEM-treated group by the difference of the AUCs of the DA-treated group and 0.1 mM NEM-treated group (Fig. 1c). The GRC levels in hUC-MSCs decreased in a dose-dependent manner following treatment with DA (Fig. 2e and 2f), implying that the GRC assay is applicable to hUC-MSCs.

Analyzing GSH levels of whole cellular and mitochondrial areas using flow cytometry

Previously, we showed that GSH levels decreased and GSH heterogeneity increased in hBM-MSCs as the passage number increased (3). We used this finding to analyze the mean and heterogeneity of the GSH levels pertaining to

the whole-cell and mitochondria in hBM-MSCs with different passage numbers (P4 and P9) using flow cytometry. P4 hBM-MSCs exhibited significantly higher FR mean values and lower FR robust coefficient of variation (rCV) values than those at P9 (Fig. 3). Interestingly, the rCV levels for MitoFreSHtracer were approximately 4.7 times different between the P4 and P9 cells. This indicates that the rCV values of MitoFreSHtracer were more sensitive to the passage-dependent conditions of hBM-MSCs than those of FreSHtracer, which stains GSH in the entire cell.

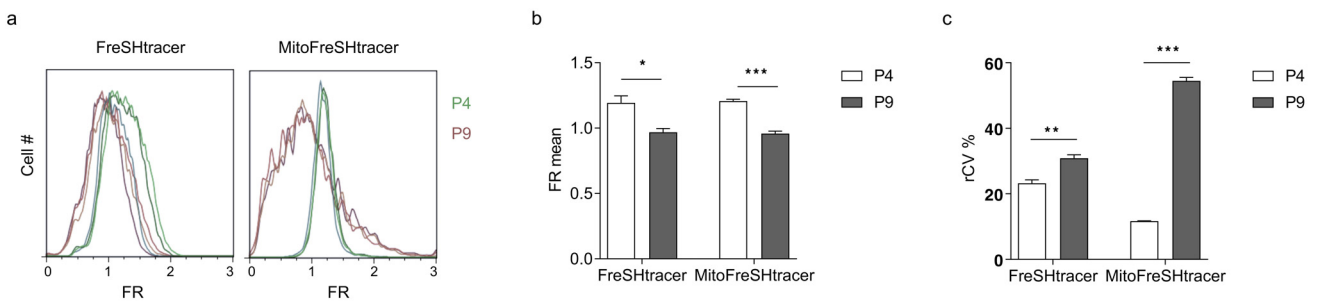


Fig. 3. Analysis of means and heterogeneity of GSH levels in the whole-cellular and mitochondria of hBM-MSCs. (a~c) hBM-MSCs from different passages P4 and P9 were stained with FreSHtracer or MitoFreSHtracer and analyzed using flow cytometry. Flow cytometric analysis of the FR levels (F510/F580 ratio) from FreSHtracer (left) and MitoFreSHtracer (right) in P4 and P9 hBM-MSCs (a). The mean (b) and robust coefficient of variation (rCV, c) values plotted based on the FR levels. rCV is assumed as heterogeneity of the FR levels. Error bars represent means ± SEM. *p < 0.05, **p < 0.01, ***p < 0.001.

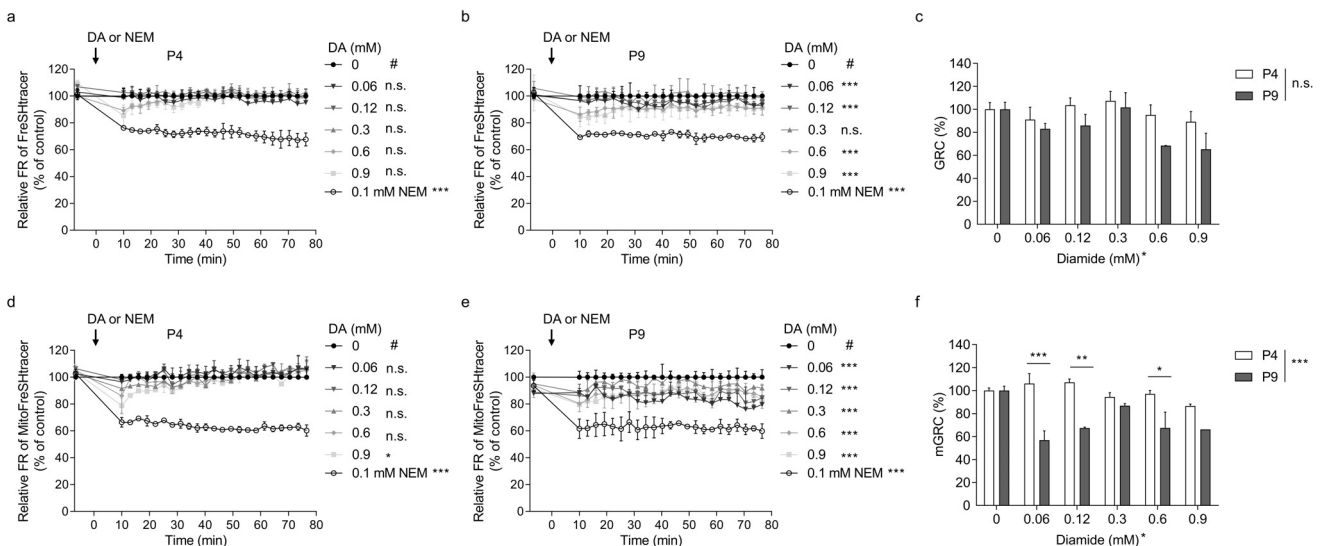


Fig. 4. Comparing the GRC data of hBM-MSCs with different passages. hBM-MSCs passaged to P4 and P9 were loaded with (a~c) FreSHtracer or (d~f) MitoFreSHtracer, treated with 0, 0.06, 0.12, 0.3, 0.6, and 0.9 mM of diamide (DA) or 0.1 mM N-ethylmaleimide (NEM), and were analyzed using fluorescence confocal microscopy. The FR (F510/F580 ratio) levels were plotted over time in (a, d) P4 and (b, e) P9 hBM-MSCs, respectively. The GRC and mGRC levels of both cells loaded (c) FreSHtracer and (f) MitoFreSHtracer, respectively were calculated based on the FR kinetics. Error bars represent means ± SEM. #: control group. *p < 0.05, **p < 0.001, ***p < 0.001.

Measuring GRC of whole cellular and mitochondrial areas using HCS microscopy

The P4 and P9 hBM-MSCs were used for the GRC assay. The GRC levels for the whole cellular and mitochondrial areas were analyzed using FreSHtracer and MitoFreSHtracer, respectively. Whereas P4 cells showed no significant kinetic changes in the FR of the whole cell area, P9 cells exhibited significant changes at all DA concentrations except at 0.3 mM (Fig. 4a and 4b). The GRC values were calculated based on the FR kinetics. However, the values were not significantly different between P4 and P9 cells (Fig. 4c).

Investigation of the mitochondrial GRC in hBM-MSCs showed that the FR kinetics of the P4 cells were significantly altered only in the cells treated with 0.9 mM DA (Fig. 4d), whereas those of P9 cells were significantly altered at all DA concentrations (Fig. 4e). Furthermore, the GRC values were significantly different between both cells at all treatments except for the 0.3 mM DA-treated groups (Fig. 4f).

Discussion

In this study, we developed a method to quantify the GRC in mesenchymal stem cells using a FreSHtracer-based HCS microscopy system. The GRC assay is typically performed within 4 h of cell seeding. We could significantly distinguish the P4 and P9 hBM-MSCs by measuring the mitochondrial GRC (mGRC), but not the whole-cell GRC. Thus, this protocol is simple, rapid, and reliable. It is a promising tool for enhancing the efficacy of therapeutic stem cells.

Previously, we had reported a GRC assay based on the GSH recovery slope and initial GSH levels using FreSHtracer (4). We have upgraded the current methodology by including the area under the curve analysis and MitoFreSHtracer probe to the protocol to obtain a more comprehensive and reliable GRC quantification data compared with that obtained using the previous method.

DA is a thiol-specific oxidant that decreased the GRC levels in hBM-MSCs under most conditions. Interestingly, the decrease in GRC caused by DA treatment was not always concentration-dependent. For example, the mGRC of the P9 cells treated with 0.06 mM DA, which was the lowest treatment concentration, showed the most effective decrease in the GRC value (Fig. 4f). Moreover, the mGRC values of the P9 cells gradually increased in a dose dependent manner as the DA-treatment concentration increased from 0.06 to 0.3 mM. This can probably be attributed to the threshold at which the expression of genes re-

lated to the cellular redox buffering system is activated by the KEAP1-NRF2 signaling pathway; however, further study is required to confirm this hypothesis.

GSH is synthesized in the cytosol and transferred to other organelles, including the nucleus, mitochondria, endoplasmic reticulum, and Golgi complex. Given that the mitochondria generate reactive oxygen species during oxidative phosphorylation to generate ATP, mGSH is critically involved in reducing lipid peroxidation and regulating cell death (6). The present study showed that the mGRC and heterogeneity of mGSH were highly sensitive to the passage-dependent conditions of MSCs (Fig. 3c and 4f), implying that the mGSH redox buffering capacity might be crucially related to stem cell quality. Future studies are necessary to investigate whether this GRC assay can identify other critical culture factors that impact stem cell efficacy such as hypoxia and donor age. Further studies need to be performed to determine if this GRC assay may be applied to other stem cells and ascertain the sensitivity of other organelles to the stem cell quality. Thus, the GRC may be a good index for evaluating stem cell quality.

Acknowledgments

We thank all Cell2in members for their assistance with this study. This work was supported by a Jeju National University research grant in 2021.

Potential Conflict of Interest

E.M.J. is the cofounder of Cell2in— a company that develops FreSHtracer-based cell therapy.

References

1. Lu SC. Glutathione synthesis. *Biochim Biophys Acta* 2013; 1830:3143-3153
2. Winterbourn CC, Hampton MB. Thiol chemistry and specificity in redox signaling. *Free Radic Biol Med* 2008;45: 549-561
3. Jeong EM, Yoon JH, Lim J, Shin JW, Cho AY, Heo J, Lee KB, Lee JH, Lee WJ, Kim HJ, Son YH, Lee SJ, Cho SY, Shin DM, Choi K, Kim IG. Real-time monitoring of glutathione in living cells reveals that high glutathione levels are required to maintain stem cell function. *Stem Cell Reports* 2018;10:600-614
4. Lim J, Heo J, Ju H, Shin JW, Kim Y, Lee S, Yu HY, Ryu CM, Yun H, Song S, Hong KS, Chung HM, Kim HR, Roe JS, Choi K, Kim IG, Jeong EM, Shin DM. Glutathione dynamics determine the therapeutic efficacy of mesenchymal stem cells for graft-versus-host disease via CREB1-NRF2 pathway. *Sci Adv* 2020;6:eaba1334
5. Lim J, Heo J, Yu HY, Yun H, Lee S, Ju H, Nam YJ, Jeong SM, Lee J, Cho YS, Choo MS, Jeong EM, Ryu CM, Shin

- DM. Small-sized mesenchymal stem cells with high glutathione dynamics show improved therapeutic potency in graft-versus-host disease. *Clin Transl Med* 2021;11:e476
6. Ribas V, García-Ruiz C, Fernández-Checa JC. Glutathione and mitochondria. *Front Pharmacol* 2014;5:151
 7. Marí M, Morales A, Colell A, García-Ruiz C, Kaplowitz N, Fernández-Checa JC. Mitochondrial glutathione: features, regulation and role in disease. *Biochim Biophys Acta* 2013; 1830:3317-3328
 8. Cho AY, Choi K. A coumarin-based fluorescence sensor for the reversible detection of thiols. *Chem Lett* 2012;41:1611-1612
 9. Jeong EM, Shin JW, Lim J, Kim JH, Kang H, Yin Y, Kim HM, Kim Y, Kim SG, Kang HS, Shin DM, Choi K, Kim IG. Monitoring glutathione dynamics and heterogeneity in living stem cells. *Int J Stem Cells* 2019;12:367-379
 10. Porcelli AM, Ghelli A, Zanna C, Pinton P, Rizzuto R, Rugolo M. pH difference across the outer mitochondrial membrane measured with a green fluorescent protein mutant. *Biochem Biophys Res Commun* 2005;326:799-804