

# *Echinococcus granulosus* Protoscolex DM9 Protein Shows High Potential for Serodiagnosis of Alveolar Echinococcosis

Jeong-Geun Kim<sup>1</sup> , Xiumin Han<sup>2</sup> , Yoon Kong<sup>1,\*</sup> 

<sup>1</sup>Department of Molecular Parasitology, Samsung Medical Center, Sungkyunkwan University School of Medicine, Suwon 16419, Korea;

<sup>2</sup>Clinical Research Institute of Hydatid Disease, Qinghai Provincial People's Hospital, Xining 810007, China

**Abstract:** Alveolar echinococcosis (AE) caused by infection with *E. multilocularis* metacestode, represents one of the most fatal helminthic diseases. AE is principally manifested with infiltrative, proliferating hepatic mass, resembling primary hepatocellular carcinoma. Sometimes metastatic lesions are found in nearby or remote tissue. AE diagnosis largely depends on imaging studies, but atypical findings of imaging features frequently require differential diagnosis from other hepatic lesions. Serological tests may provide further evidence, while obtaining reliable AE materials is not easy. In this study, alternative antigens, specific to AE were identified by analyzing *E. granulosus* protoscolex proteins. An immunoblot analysis of *E. granulosus* protoscolex showed that a group of low-molecular-weight proteins in the range from 14 kDa to 16 kDa exhibited a sensitive and specific immune response to AE patient sera. Partial purification and proteomic analysis indicated that this protein group contained myosin, tubulin polymerization promoting protein, fatty-acid binding protein, uncharacterized DM9, heat shock protein 90 cochaperone tebp P-23, and antigen S. When the serological applicability of recombinant forms of these proteins was assessed using enzyme-linked immunosorbent assay, DM9 protein (rEgDM9) showed 90.1% sensitivity (73/81 sera tested) and 94.5% specificity (172/181 sera tested), respectively. rEgDM9 showed weak cross-reactions with patient sera from the transitional and chronic stages of cystic echinococcosis (3 to 5 stages). rEgDM9 would serve as a useful alternative antigen for serodiagnosis of both early- and advanced-stage AE cases.

**Key words:** Alveolar echinococcosis, *Echinococcus granulosus* protoscolex, proteome, specific antigen, serodiagnosis

## INTRODUCTION

*Echinococcus multilocularis* metacestode infection causes alveolar echinococcosis (AE), a major zoonotic helminthiasis. AE is widely distributed in alpine areas in Europe, Central Asia, northwestern China, the northern part of Japan, and North America [1,2]. Humans are infected by incidental contraction with eggs expelled from canine definitive hosts. When humans become infected with eggs, they are activated in the small intestine (oncosphere), released into the bloodstream, end up lodged in the liver, and grow slowly to form multivesicular cystic masses, in which brood capsules, primary cells, and protoscolices develop [3].

AE lesion is typically manifested with infiltrative hepatic

mass. Sometimes metastatic AE lesions are found in the distinct tissues/organs other than the liver [3]. Patients may complain of abdominal pain, jaundice, hepatomegaly, and weight loss during infection. However, most infections are asymptomatic, usually taking 10 to 15 years after infection, until the mass causes a space-occupying effect or metastatic lesions develop [4]. Patients mostly suffer from non-operable lesions or chronic liver failure when symptoms appear, requiring continuous treatment and monitoring. Early diagnosis and radical treatment may contribute to reducing the disability-adjusted life years and even death [4].

Diagnosis of AE largely depends on a combination of imaging and serological tests [5-7]. However, imaging studies including ultrasonography (US), computed tomography (CT), and/or magnetic resonance (MR) examinations often require a differential diagnosis from other hepatic space-occupying lesions, even for experienced physicians due to their atypical findings. Serological tests may provide additional evidence for AE [5]. A bundle of proteins was searched for AE serodiagnosis. A recombinant II/3 antigen was isolated by screening *E.*

•Received 2 February 2022, revised 9 February 2022, accepted 10 February 2022.

\*Corresponding author (kongy@skku.edu)

© 2022, Korean Society for Parasitology and Tropical Medicine

This is an Open Access article distributed under the terms of the Creative Commons Attribution Non-Commercial License (<https://creativecommons.org/licenses/by-nc/4.0>) which permits unrestricted non-commercial use, distribution, and reproduction in any medium, provided the original work is properly cited.

*multilocularis* cDNA library with pooled serum of patients with AE [8]. Another 54 kDa mucin-containing glycoprotein Em2, localized in the laminated layer of *E. multilocularis* vesicle, was purified by immunoaffinity chromatography by filtering cross-reactive components with cystic echinococcosis (CE) patients' sera [9,10]. However, since the immunodominant epitope of Em2 protein is composed of trisaccharides (Gal $\alpha$ 1-4Gal $\beta$ 1-3GalNAc), widely distributed in several trematodes, the protein caused cross-reaction against sera of other helminthic infections [11]. Another study isolated a 65 kDa Em10 protein (EmII/3) by cDNA library screening using pooled AE patient sera [12]. Two *E. multilocularis* protoscolex proteins at 16 kDa and 18 kDa (Em16/18) were reported to have a sensitivity and specificity of approximately 85%, but these molecules only react with serum samples from active stage AE [13,14]. Moreover, these proteins are partial fragments of ezrin-like protein, derived from the ezrin-radixin-moesin family. These proteins bear same epitope, which is hard to detect diverse polyclonal antibodies circulating in infected individuals [15]. The identification and characterization of novel serodiagnostic biomarkers for AE may be beneficial for diagnosing AE in various clinical settings [16].

In an effort to seek an alternative antigen available for AE, we analyzed diagnostic applicability of *E. granulosus* protoscolex proteins. A protein designated as uncharacterized DM9 of *E. granulosus* (EgDM9; CDJ22470) was found to have high diagnostic performance. We assessed the diagnostic feasibility of bacterially expressed recombinant EgDM9 (rEgDM9) in serological diagnosis of AE patients.

## MATERIALS AND METHODS

### Parasite and serum samples

*E. granulosus* protoscolex and hydatid fluid (CE2 stage) were collected from the sheep livers at a slaughterhouse in Xining, Qinghai, China. The *E. multilocularis* protoscolex was a generous gift from Dr. Wang (Qinghai Centers for Diseases Control and Prevention). The protoscolices were washed with physiological saline containing protease inhibitor cocktail (1 tablet/25 ml, Complete, Roche, Swiss), homogenized with a Teflon-pestle crusher, and centrifuged at 20,000 g for 1 hr at 4°C. Hydatid fluid was cleared at 500 g for 2 min, followed by centrifuged at 20,000 g for 1 hr at 4°C. The supernatants were stored at -80°C. Total RNA was isolated from fresh *E. granulosus* protoscolex using an RNA extraction kit (iNtRON, Seong-

nam, Korea). cDNA was reverse transcribed using a first-strand cDNA synthesis kit (Invitrogen, Carlsbad, California, USA).

The sera of patients with AE and CE cases stored at Qinghai Provincial People's Hospital was used. The patients were diagnosed based on clinical features and US examination [17,18]. We categorized the patients into early and advanced stages according to their US images. The patients whose US could not be reviewed by corresponding author were regarded as stage not-defined. We used 81 AE sera (each of 25 cases of early- and advanced-stage and 31 sera with stage not-defined). A total of 97 sera, which included CE1 (18 sera), CE2 (15 sera), CE3 (21 sera), CE4 (25 cases), and CE5 (18 cases), respectively, was examined. We also tested 33 sera from cysticercosis patients and 51 sera from normal controls, who denied any possible infection to helminths and protozoans. Informed consent was obtained from the patients and donors. The study protocol and use of serum samples were approved by the Institutional Review Board of Qinghai Provincial People's Hospital, Xining, China (2017-7-29).

### Electrophoresis and immunoblotting

For SDS-PAGE, protein samples were separated on 15% gels under reducing conditions and stained with Coomassie Brilliant Blue G-250 (CBB). Two-dimensional electrophoresis (2-DE) was done as previously described [17]. In brief, samples mixed with rehydration buffer were focused on IPG strips pH 3-10 or pH 4-7 (GE healthcare, Piscataway, New Jersey, USA) and processed with 15% SDS-PAGE. Proteins separated by SDS-PAGE or 2-DE were electroblotted to nitrocellulose membranes (Santa Cruz, Dallas, Texas, USA). The membranes were blocked with Tris-buffered saline (100 mM, pH 8.0) containing 3% skim milk and 0.1% Tween-20 for 1 hr. The blots were incubated with individual and/or pooled serum overnight (1:200 or 1:1,000 dilution) at 4°C and sequentially with horse radish peroxidase (HRP)-conjugated anti-human IgG (heavy- and light-chain specific, Cappel, Solon, Ohio, USA) for 2 hr (1:2,000-1:4,000 dilution). Immunoreactive signals were detected by either 4-chloro-1-naphthol chromogen (4C1N; Sigma-Aldrich, St. Louis, Missouri, USA) supplemented with 0.03% H<sub>2</sub>O<sub>2</sub> for 10 min or SuperSignal Chemiluminescence (ECL; GE Healthcare) after 2 min exposure.

### Immunoprecipitation

*E. granulosus* protoscolex (Egpsc) or *E. multilocularis* protoscolex (Empsc) (500  $\mu$ g each) was mixed with 10 pooled pa-

tient serum (15 µl) of AE, CE, or cysticercosis and incubated overnight at 4°C, after which Protein A/G agarose beads (30 µl, Santa Cruz) was added, and incubated for 24 hr at 4°C. The pellet was recovered by brief centrifugation and washed 3 times with wash buffer (20 mM Tris HCl [pH 8.0], 137 mM NaCl, 1% Triton X-100, and 2 mM EDTA). The pellets were separated by 15% SDS-PAGE and processed to immunoblot probed with pooled serum of AE or CE patient (each  $n = 10$ ).

#### Column chromatography

Egpc proteins (30 mg/1 ml) were eluted by a 1.6×80 cm-long Superdex 200 pre-grade fast performance liquid chromatography (FPLC) equilibrated with 20 mM Tris-HCl (pH 8.0) containing 150 mM NaCl (flow rate: 1 ml/min). A total of 80 fractions (3 ml/fraction) were collected. The proteins were concentrated using an Amicon Ultra Centrifugal Filter (molecular limit: 3 kDa, MilliporeSigma) and analyzed by 15% SDS-PAGE or 2-DE.

#### Nano-liquid chromatography-electrospray ionization/multi-stage MS (nano-LC-ESI-MS/MS)

Protein spots were cut and sliced into fragments from independent gels, reduced with DTT (10 mM), and processed for LC-MS/MS analysis [17]. The analysis was performed using a nanoflow system (Model 1200, Agilent Technologies, Palo Alto, California, USA) connected to a LTQ linear ion trap mass spectrometer (Thermo Electron, San Jose, California, USA). The 12 cm-long reversed phase capillary column with 75 µm inner diameter and in-house packed with 5 µm 200 Å pore-sized Magic C18AQ beads was applied (Michrom BioResources, Auburn, California, USA). The peptides were eluted in a linear gradient from 10% to 40% acetonitrile over 65 min. MS survey was scanned for 300-2,000  $m/z$  with 3 data-dependent MS/MS scans of isolation width (1.5  $m/z$ ), normalized collision energy (25%), and dynamic exclusion duration (180 sec). MS data were generated in RAW file format (Thermo Scientific) using the Xcalibur 1.4 with Tune 1.0. Peptide peaks were introduced into MS/MS ions search within a Mascot server (<http://www.matrixscience.com/>). Mass values were selected using monoisotopic masses. Peptide and MS/MS tolerances were  $\pm 1.2$  and  $\pm 0.6$  Da, respectively. Protein identification of individual ions scores  $> 43$  was considered significant or demonstrate extensive homology ( $P < 0.05$ ). Cysteine carbamidomethylation and methionine oxidation were considered. MS database search was performed on the NCBI database ([\[www.ncbi.nlm.nih.gov/\]\(http://www.ncbi.nlm.nih.gov/\)\).](http://</a></p>
</div>
<div data-bbox=)

#### PCR, cloning, and expression of recombinant proteins

The candidate proteins were searched from nonredundant and expressed sequence tag (EST) against the NCBI database (<http://blast.ncbi.nlm.nih.gov/>) and gene/protein database of *E. granulosus* (<http://www.gendb.org/Homepage/>). Each primer containing BamHI and HindIII restriction sites was prepared (Supplementary Table S1). The genes were amplified from the *E. granulosus* cDNA library by PCR: 35 cycles for 5 min at 94°C, 45 sec at 94°C, 1 min at 58°C, 45 sec at 72°C, 1 min at 72°C, with final extension for 10 min at 72°C [19]. The amplicons were purified by QIAquick Gel extraction kit (Qiagen, Hilden, Germany). The plasmids were ligated to pET-28a or pGEX-6p-1 vector and transformed into *Escherichia coli* DH5α (Takara, Shiga, Japan).

Recombinant plasmids were transformed into *E. coli* BL21 (DE3) and cultured in the Luria-Bertani medium supplemented with antibiotics (50 µg/ml). Recombinant proteins were induced with 1 mM isopropyl-β-D-thiogalactopyranoside for 4 hr at 37°C. The cells were lysed and centrifuged at 20,000 g for 1 hr. Recombinant proteins were purified using nickel-nitrilotriacetic acid (Ni-NTA) agarose chromatography (Qiagen) or Glutathione Sepharose 4B affinity column (GE healthcare).

#### Enzyme-linked immunosorbent assay (ELISA)

After a checkerboard titration, 100 µl of EgDM9 (2.5 µg/ml suspended in 100 mM carbonate-bicarbonate buffer, pH 9.6) was coated to the wells of a flat-bottom 96-well microplate (Greiner Bio-One, Kremsmuenster, Austria) overnight at 4°C. One hundred microliters of serum samples (1:200 dilution in phosphate buffered saline containing 0.05% Tween 20 [PBS/T]) were incubated for 2 hr at 37°C, subsequently 1:2,000 diluted HRP-conjugated anti-human IgG antibody (100 µl, Cappel) was incubated for 2 hr at 37°C. Color reactions were developed with 100 µl of 1% *o*-phenylenediamine (Sigma-Aldrich) supplemented with 0.03% H<sub>2</sub>O<sub>2</sub> for 20 min in the dark. Reactions were stopped using 2 N H<sub>2</sub>SO<sub>4</sub> (50 µl, Sigma-Aldrich). The absorbance was measured at 450 nm on a NEO microplate reader (Biotek, Winooski, Vermont, USA). Sera from healthy donors and PBS/T were used as negative and blank controls, respectively. Results were determined after correction with appropriate blank.

### Statistical analysis

Positive/negative values were used to normalize the different batches of ELISA results. GraphPad Prism9 software (GraphPad, San Diego, California, USA) and SPSS statistical package (ver25, IBM, Armonk, New York, USA) were used for the analysis of variance. All data are expressed as the mean  $\pm$  standard deviation (SD) of at least 3 independent assays. A *P*-value of  $< 0.05$  with a 2-sided hypothesis was employed. Sensitivity, specificity, positive/negative predictive values (PPV/NPV), positive/negative likelihood ratios (PLR/NLR), and 95% confidence intervals (CIs) were calculated. The receiver operating characteristic (ROC) curve was created by plotting sensitivity versus 1-specificity. The area under the ROC curve (AUC) was used to compare the diagnostic performance pairwise. ROC analysis determined cutoff values defined as the positive and negative values that gave the highest sum of sensitivity and specificity totals.

## RESULTS

### Egpsc low-molecular-weight proteins revealed specific immune responses against AE patient sera

The immunoreactivity profile of *E. granulosus* and *E. multilocularis* metacestode proteins was screened against patient sera with echinococcoses. Immunoblot analysis of individual anatomical compartments of *E. granulosus* and *E. multilocularis* metacestodes probed with the pooled serum of patients with AE and CE revealed that proteins with molecular weights  $> 25$  kDa showed a similar reactive pattern against both patient sera (Fig. 1A). However, 3–5 proteins in the 14–16 kDa range exhibited strong antibody responses against AE patient sera, while showing minimal antibody reactions against CE sera (dotted box). The reaction profile of Egpsc and Empsc was further observed by immunoprecipitation. Egpsc proteins immunologically precipitated with the pooled serum of AE patients exhibited specific bands at around 14–16 kDa, whereas those from CE or cysticercosis patients revealed negligible reactions. Empsc proteins immunoprecipitated with sera of patients with AE also showed immunoreactive bands at around 14–16 kDa, but their immunoreactive signal was weaker than those of Egpsc (dotted box, Fig. 1B). When the antibody capturing activity was assessed by immunoblotting, this protein group showed overall diagnostic sensitivity and specificity of about 85–90% in diagnosing patients with AE (Fig. 1C, D).

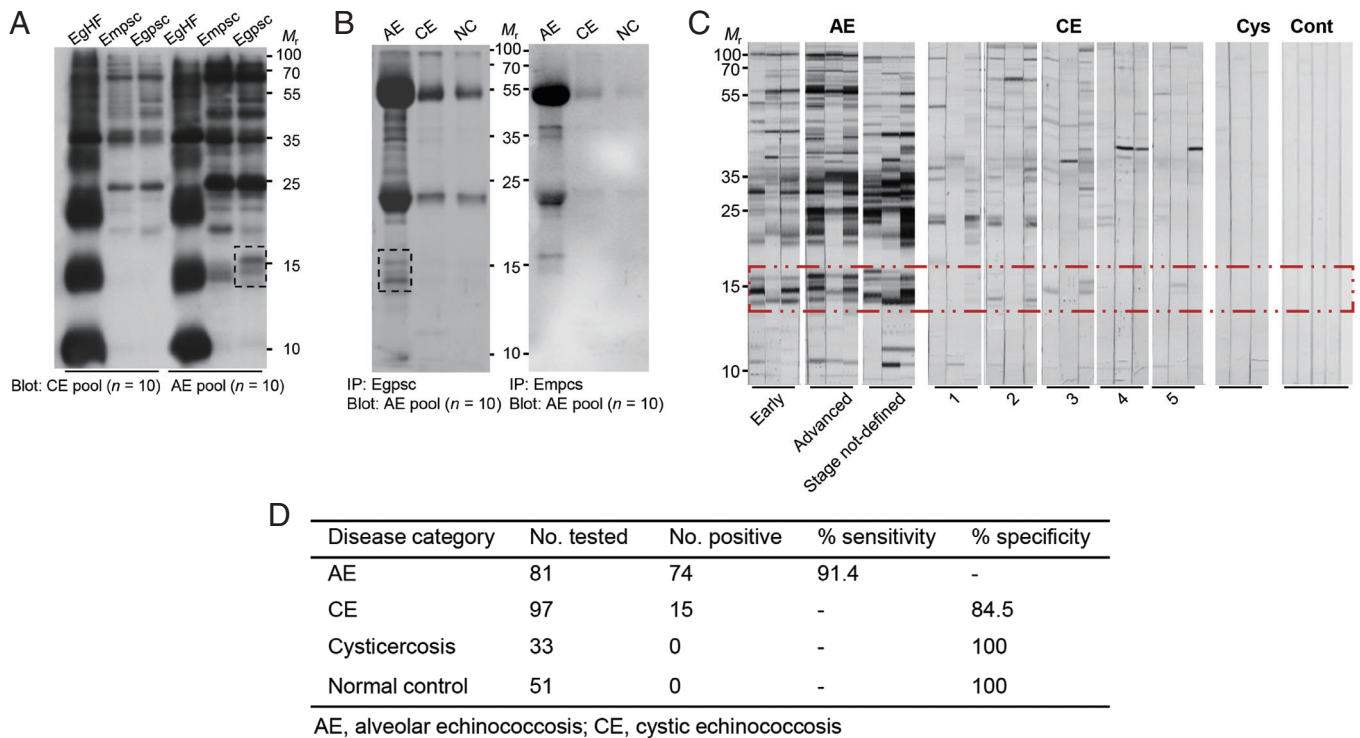
### Identification of Egpsc low-molecular-weight proteins

Egpsc low-molecular-weight proteins were enriched using FPLC. Proteins eluted in the fractions 54–58 contained target molecules (gel filtration profile not shown, Fig. 2A). These proteins were separated using 2-DE and processed with immunoblotting probed with pooled serum of patients with AE and CE. As shown in Fig. 2B, proteins with molecular weights ca. 14–16 kDa with *pI* values ranging between 4.5–6.5 showed specific antibody reactions against the sera of AE patients, but not against CE sera. This result demonstrated that Egpsc low-molecular-weight proteins at 14–16 kDa might be good candidates for the serodiagnosis of patients with AE. These spots were eluted from the 2-DE gels, concentrated, and separated by 15% SDS-PAGE. A broadband between 14 and 16 kDa was observed (Fig. 2C). When this band was subjected to LC-MS/MS analysis, the proteins were identified to be myosin, tubulin polymerization promoting protein, fatty acid binding protein 2, hsp90 cochaperone P-23, DM9, expressed protein, and antigen S. Fig. 2D summarizes the identification result. Those candidate molecules were procaryotically expressed by generation of recombinant plasmids via PCR amplification. We did not express antigen S and cyclophilin because antigen S was a fragment of *E. granulosus* endophilin B1, which shows strong antibody responses to patient sera infected with Taeniidae parasites [20]. The cyclophilin has been implicated with leukocyte chemotaxis rather than priming antigen presenting cells [21]. When the immunoreactivity profile of these proteins was evaluated, all recombinant proteins except for EgDM9 did not show specific antibody reactions (Supplementary Fig. S1).

### Molecular properties of EgDM9

The DM9 protein was selected as a target biomarker. Searches in GeneDB (<http://www.gendb.org/Homepage/>) and GenBank (<http://www.ncbi.nlm.nih.gov/>) yielded one gene each encoding *E. granulosus* DM9 (EgrG\_000127000, CDJ22470) and *E. multilocularis* DM9 (EmuJ\_000127000, CDI97494), respectively. Both genes were coded for 139 amino acids. EgDM9 and EmDM9 proteins showed 97.8% sequence identity each other, while other platyhelminth members revealed 42.4–67.6% identity. The deduced amino acid sequences of these genes contained 13  $\beta$ -strand secondary structures based on the Hidden Markov Model. Three mannose-binding residues were identified at Lys116, Try119, and Glu26 [22]. Interestingly, EgDM9 and EmDM9 proteins tightly conserved the same epitope sequences at the same positions (Gly45-Val51,





**Fig. 1.** Identification of immunoreactive proteins of *E. granulosus* protoscolex against patient sera of alveolar echinococcosis (AE) and cystic echinococcosis (CE). (A) Immunoblotting of different anatomical compartments of *E. granulosus* and *E. multilocularis* probed with pooled serum ( $n=10$ ) of patients with AE and CE patients. EgHF, *E. granulosus* hydatid fluid; Empsc, *E. multilocularis* protoscolex; EmHF, *E. multilocularis* hydatid fluid; Egpsc, *E. granulosus* protoscolex. (B) Immunoprecipitation of Egpsc and Empsc with pooled serum ( $n=10$ ) of patients with AE, CE, and cysticercosis. All blots were probed with 1:2,000 diluted pooled serum and 1:4,000 diluted HRP-conjugated anti-human IgG antibodies. Immunoreactive signals were detected using ECL after 2-min exposure. (C) Immunoblotting of Egpsc against serum samples from AE, CE, and cysticercosis (Cys), and those from healthy donors (Cont). Dotted box shows a low-molecular-weight proteins showing specific immunoreactivity.  $M_r$ , molecular weights in kDa. (D) Assessment of diagnostic performance of low-molecular-weight proteins of Egpsc.

Thr60-Ala67, Ala73-Lys81, and Gly125-Glu130) using Bepipred Linear Epitope Prediction 2.0 analysis (Supplementary Fig. S2).

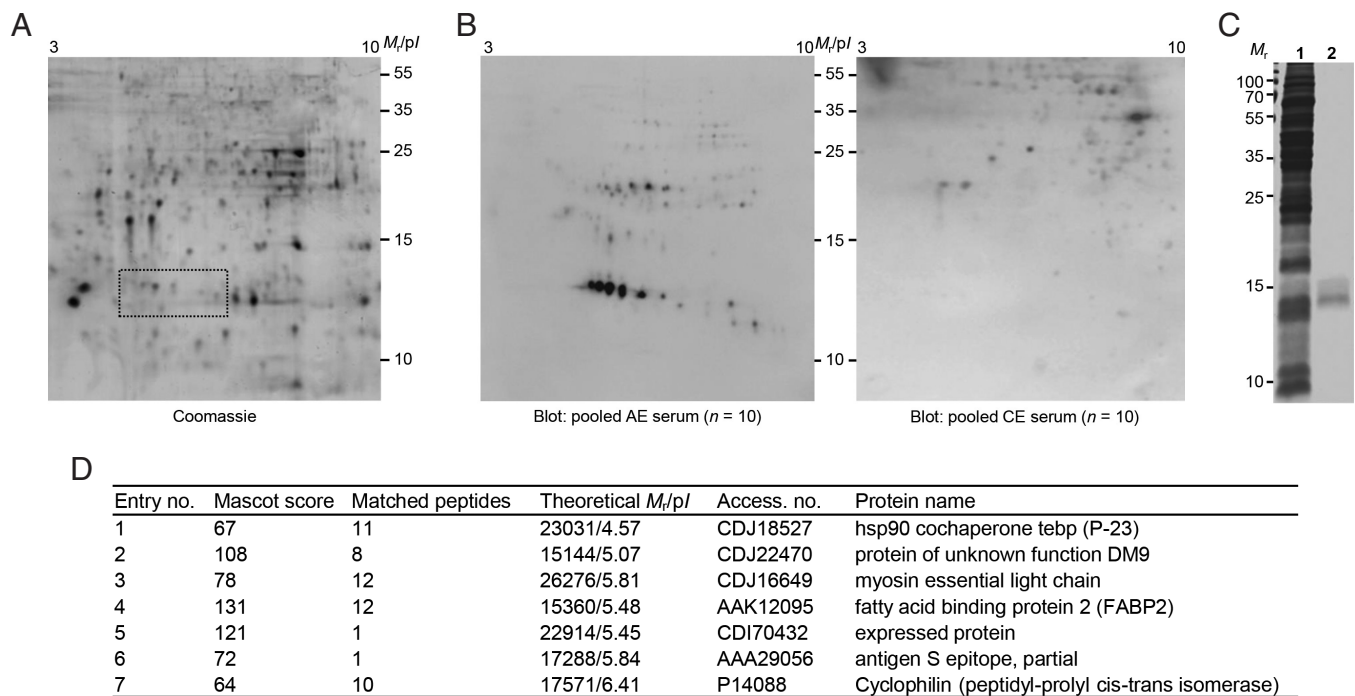
#### Diagnostic performance of rEgDM9

The specific IgG antibody levels of 262 sera from AE ( $n=81$ ), CE ( $n=97$ ), and cysticercosis ( $n=33$ ) patients were determined, as well as those from healthy controls ( $n=51$ ) against rEgDM9 with purity greater than 98.5% using densitometric analysis of SDS-PAGE gel image (inset, Fig. 3A). Serum samples from patients with AE, regardless of disease stages, exhibited significantly higher levels of anti-rEgDM9-specific IgG antibodies compared to other infection groups ( $0.44 \pm 0.16$  vs  $0.16 \pm 0.04$ ,  $P < 0.0001$ , Fig. 3A; Table 1). No significant differences in specific IgG antibody levels against rEgDM9 were observed between early- and advanced-stage of AE ( $P > 0.05$ ). The AUC for rEgDM9 was  $0.9820 \pm 0.0062$  (Fig. 3B). The ROC

curve demonstrated that optimal cutoff abs. of 0.28 distinguished the positive and negative reactions with 95% CIs of 0.9699-0.9940. PPV and NPV of the test were 88.0% and 95.5%, respectively. In addition, PLR and NLR were 16.31 and 0.10, respectively. Table 1 summarized important variables. rEgDM9 showed weak cross-reactions against patient sera from the transitional stage (CE3) and chronic stages (CE4 and CE5), while those from early CE1 and CE2 stages did not show positive responses. Sera from patients with cysticercosis and healthy donors did not react positively (Fig. 3A; Table 1). The diagnostic sensitivity and specificity of rEgDM9-based ELISA were 90.1% and 94.5%, respectively.

## DISCUSSION

This study investigated the diagnostic feasibility of rEgDM9 using serum samples from hepatic AE cases. rEgDM9 exhibited



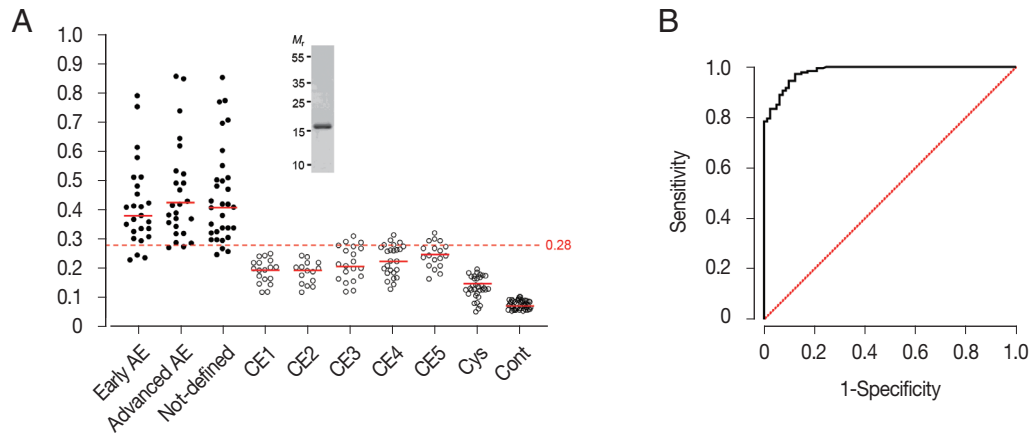
**Fig. 2.** (A) 2-DE profiles of partially purified *E. granulosus* protoscoleces. The proteins eluted through FPLC (fractions 54-59) were pooled, dialyzed, and concentrated. The proteins were electrofocused on the IPGstrip (pH 3-10), separated on 15% SDS-PAGE, and stained with CBB G-250. Proteins showing specific immunoreactivity against AE patient sera are marked by dotted box. (B) 2-D immunoblots probed with the pooled serum of AE and CE patients ( $n = 10$ ).  $M_r$ , molecular weights in kDa;  $pI$ , isoelectric point. (C) SDS-PAGE of partially purified low-molecular-weight proteins. The gels marked by a dotted box in A were sliced and proteins were eluted using Ez-Way Protein Elution Kit. The proteins were dialyzed, concentrated, and separated by 15% reducing SDS-PAGE. 1, crude Egpsc; 2, partially purified proteins.  $M_r$ , molecular weights in kDa. (D) Protein identification by LC-MS/MS.

diagnostic sensitivity of 90.1%. Analysis of patient sera infected with phylogenetically closed Taeniidae parasites, such as *E. granulosus* metacestode and *Taenia solium* metacestode, as well as sera from healthy controls demonstrated an overall specificity of 94.5%. The results suggest that rEgDM9 has diagnostic potential for serodiagnosis of AE as an alternative biomarker (Table 1).

The most reliable antigens for AE serodiagnosis may be derived from the homologous parasite. However, limited parasite resources often hamper obtaining reliable materials in sufficient quantities, especially in AE cases. Several efforts have been made to overcome this shortcoming; *E. multilocularis* vesicles have been cultured in vitro or infected in severely combined immunodeficient mice [23,24]. However, *E. multilocularis* vesicles obtained under these conditions demonstrated different protein expression profiles compared to those obtained from naturally infected hosts. More importantly, these proteins showed different immune recognition patterns against infection sera [25,26]. It remains a challenge to obtain

reliable antigens in sufficient amounts available for AE serodiagnosis, and further investigation is needed to identify and isolate a well-defined antigenic molecule that shows reproducible diagnostic performance [13].

In this study, we asked whether Egpsc contained proteins specifically reactive with sera with AE patient because these 2 phylogenetically close cestode parasites shared lots of biochemical and molecular biological singularities [27,28]. We observed that the high immunoreactivity of the low-molecular-weight protein group ranged from 14–16 kDa in Egpsc. These molecules were identified using proteomic analysis and recombinant forms of candidate proteins, such as hsp90, EgDM9, myosin, FABP2, and uncharacterized expressed protein were generated. However, the immunoblot experiment of these molecules showed no significant diagnostic applicability other than rEgDM9 (Supplementary Fig. S1). We therefore focused our interest to assess the diagnostic potential of rDgDM9 using a panel of patient sera infected with Taeniid members. We found that rEgDM9 showed a sensitive and specific



**Fig. 3.** (A) Specific IgG antibody levels in sera of patients with alveolar echinococcosis (AE), cystic echinococcosis (CE), and cysticercosis (Cys) against rEgDM9. The y-axis shows the absorbance values of the detected sera. The x-axis indicates the following sera groups: Early AE, early-stage AE patients whose ultrasonogram demonstrated multiple small hailstorm-like cysts without a solid component ( $n=25$ ); Advanced AE, advanced-stage AE cases who revealed an irregular cystic area associated with central necrosis surrounded by peripheral non-homogenous echogenicity ( $n=25$ ); Not-defined, AE patients whose disease stages could not be determined by ultrasonography ( $n=31$ ). CE1 ( $n=18$ ); CE2 ( $n=15$ ); CE3 ( $n=21$ ); CE4 ( $n=25$ ); CE5 ( $n=18$ ); Cys, cysticercosis ( $n=33$ ); Cont, healthy controls ( $n=51$ ). Inset demonstrates a homogeneity of tag-cleaved rEgDM9 shown by 15% reducing SDS-PAGE.  $M_r$ , molecular weights in kDa (B) Analysis of receiver operating characteristic (ROC) curve depicts the plot of sensitivity versus 1-specificity. The diagonal reference line is also shown. ROC curve was used to determine the cutoff values and area under the curve (AUC) for rEgDM9 in AE serum samples ( $n=81$ ) by ELISA.

**Table 1.** Evaluation of recombinant DM9 for serodiagnosis of alveolar echinococcosis

Disease category <sup>a</sup>	No. of tested	No. of positive	Sensitivity (%)	Specificity (%)	Specific antibody levels
AE	81	73	90.1		$0.44 \pm 0.16$
Early AE	25	22	88.0		$0.42 \pm 0.14$
Advanced AE	25	23	92.0		$0.46 \pm 0.17$
Stage not-defined	31	28	90.3		$0.49 \pm 0.16$
Overall <sup>b</sup>	181	9		94.5	$0.16 \pm 0.04$
CE	97	9		89.7	$0.21 \pm 0.05$
CE1	18	0		100	$0.19 \pm 0.04$
CE2	15	0		100	$0.18 \pm 0.04$
CE3	21	3		85.7	$0.21 \pm 0.06$
CE4	25	3		88.0	$0.23 \pm 0.05$
CE5	18	4		77.8	$0.25 \pm 0.04$
NC	33	0		100	$0.15 \pm 0.09$
Healthy controls	51	0		100	$0.03 \pm 0.01$
PLR		16.31			
NLR		0.1			
PPV (%)		88			
NPV (%)		95.5			
AUC $\pm$ SE		$0.9820 \pm 0.0062$			
95% CIs		0.9699 to 0.9940			
Cut-off <sup>c</sup>		0.28			

<sup>a</sup>AE, alveolar echinococcosis; CE, cystic echinococcosis; NC, neurocysticercosis.

<sup>b</sup>Overall specificity was calculated using sera from 130 patients with CE ( $n=97$ ), NC ( $n=33$ ) and those from 51 healthy controls.

<sup>c</sup>Cut-off values were determined by the analysis of ROC curves.

antibody reactivity against serum samples from AE cases (Fig. 3). Since we were unable to express the recombinant EmDM9 due to unavailability of *E. multilocularis* cDNAs, we analyzed

epitopes shared between EgDM9 and EmDM9 using computer-aided simulation. We recognized that these closely related molecules (sequence identity of 97.8%) harbored the same

epitope sequences at the same regions. This result suggests that EgDM9 and EmDM9 might have common epitopes and that EgDM9 protein can be used as a substitute antigen for EmDM9. The carbohydrate-binding property of DM9 protein might potentiate antibody capturing activity [22].

Various proteins, lipids, carbohydrates, and small RNAs packaged within extracellular vesicles are secreted into the host. *E. granulosus* metacestode might directly secrete extracellular vesicles from their syncytial tegument. Some of these proteins released into the host might interact with the host immune system to prime naïve immune cells in the local environment, resulting in production of specific antibodies [29-31]. Proteins packaged in extracellular vesicles have been identified among the antigens used for immunodiagnosis of echinococcosis and cysticercosis [32]. We assumed that EgDM9 protein might be secreted as an extracellular vesicle and induced antibody responses. This hypothesis awaits further elucidation.

In this study, we observed that the antigenicity of native EmDM9 protein was not high compared to that of EgDM9 (Fig. 1). We surmise that the low antigenicity might be attributable to the low expression levels of EmDM9. The low antigenicity of native protein due to low expression levels might be significantly increased when a recombinant protein is used. The native form of *E. granulosus* antigen B2 (EgAgB2) did not exhibit significant antibody responses against the sera of patients with CE, but recombinant EgAgB2 was one of the most reliable antigens for serodiagnosis of CE patients [19,33]. Since *E. multilocularis* vesicles showed differential expression of diverse proteins during the developmental period [34], expressional regulation of EmDM9 protein should be elucidated in the future.

As CE progressed to chronic stages, the immune responses might be lowered with the regression of the CE cyst [19]. However, it was interestingly observed that patient sera from the transitional and chronic stages of CE cases exhibited cross-reactions with rEgDM9 to some extent, while rEgDM9 showed negligible antibody responses against active stage CE sera (Table 1; Fig. 3). Lots of compositional changes occurred within the CE cyst during involution. When the cysts regressed to CE3-CE5 stages, almost all the hydatid fluids were absorbed, and only degenerative protoscolices remain in the cyst. The antibody responses to several isoforms of antigen B, which constituted the major components of hydatid fluid, might be substantially declined. Conversely, specific antibodies against

EgDM9 might be persistently remain to some extent because EgDM9 protein is continuously synthesized in the protoscolex.

In conclusion, rEgDM9 protein demonstrated a sensitive and specific antibody responses against AE patient sera. rEgDM9 would be a good candidate for serodiagnosis of AE cases.

## ACKNOWLEDGMENTS

The authors are grateful to Dr. Wang H, Qinghai Centers for Diseases Control and Prevention for his gift of *E. multilocularis* protoscolex collected from experimentally infected mouse. This work was supported in part by the Korea Research Foundation (2019R111A1A01058525).

## CONFLICT OF INTEREST

The authors declare no conflict of interest related to this study.

## REFERENCES

- Eckert J, Conraths FJ, Tackmann K. Echinococcosis: an emerging or re-emerging zoonosis? *Int J Parasitol* 2000; 30: 1283-1294. [https://doi.org/10.1016/s0020-7519\(00\)00130-2](https://doi.org/10.1016/s0020-7519(00)00130-2)
- Craig PS, Li T, Qiu J, Zhen R, Wang Q, Giraudoux P, Ito A, Heath D, Warnock B, Schantz P, Yang W. Echinococcosis and Tibetan communities. *Emerg Infect Dis* 2008; 14: 1674-1675. <https://doi.org/10.3201/eid1410.071636>
- Spiliotis M, Lechner S, Tappe D, Scheller C, Krohne G, Brehm K. Transient transfection of *Echinococcus multilocularis* primary cells and complete in vitro regeneration of metacestode vesicles. *Int J Parasitol* 2008; 38: 1025-1039. <https://doi.org/10.1016/j.ijpara.2007.11.002>
- Piarroux M, Piarroux R, Giorgi R, Knapp J, Bardonnnet K, Sudre B, Watelet J, Dumortier J, Gérard A, Beytout J, Abergel A, Mantion G, Vuitton DA, Bresson-Hadni S. Clinical features and evolution of alveolar echinococcosis in France from 1982 to 2007: results of a survey in 387 patients. *J Hepatol* 2011; 55: 1025-1033. <https://doi.org/10.1016/j.jhep.2011.02.018>
- Brunetti E, Kern P, Vuitton DA, Writing Panel for the WHO-IWGE. Expert consensus for the diagnosis and treatment of cystic and alveolar echinococcosis in humans. *Acta Trop* 2010; 114:1-16. <https://doi.org/10.1016/j.actatropica.2009.11.001>
- Kantarci M, Bayraktutan U, Karabulut N, Aydinli B, Ogul H, Yuce I, Calik M, Eren S, Atamanalp SS, Oto A. Alveolar echinococcosis: spectrum of findings at cross-sectional imaging. *Radiographics* 2012; 32: 2053-2070. <https://doi.org/10.1148/rg.327125708>
- Bellanger AP, Wang J, Gbaguidi-Haore H, Barrera C, Bresson-Had-



- ni S, Zlobec I, Lachenmayer A, Richou C, Turco C, Gottstein B, Millon L, Beldi G. Investigating new serological and tissue markers for the follow-up of patients operated for alveolar echinococcosis. *Parasite Immunol* 2021;43: e12827. <https://doi.org/10.1111/pim.12827>
8. Vogel M, Gottstein B, Müller N, Seebeck T. Production of a recombinant antigen of *Echinococcus multilocularis* with high immunodiagnostic sensitivity and specificity. *Mol Biochem Parasitol* 1988; 31: 117-125. [https://doi.org/10.1016/0166-6851\(88\)90162-4](https://doi.org/10.1016/0166-6851(88)90162-4)
  9. Deplazes P, Gottstein B. A monoclonal antibody against *Echinococcus multilocularis* Em2 antigen. *Parasitology* 1991; 103: 41-49. <https://doi.org/10.1017/s0031182000059278>
  10. Hülsmeier AJ, Gehrig PM, Geyer R, Sack R, Gottstein B, Deplazes P, Köhler P. A major *Echinococcus multilocularis* antigen is a mucin type glycoprotein. *J Biol Chem* 2002; 277: 5742-5748. <https://doi.org/10.1074/jbc.M107161200>
  11. Yamano K, Koizumi A, Takeda T, Kiuchi F, Hada N. Gal $\alpha$ 1-4Gal $\beta$ 1-3GalNAc is the dominant epitope of Em2 antigen, the mucin-type glycoprotein from *Echinococcus multilocularis*. *Parasitol Res* 2012; 111: 795-805. <https://doi.org/10.1007/s00436-012-2902-1>
  12. Frosch PM, Frosch M, Pfister T, Schaad V, Bitter-Suermann D. Cloning and characterisation of an immunodominant major surface antigen of *Echinococcus multilocularis*. *Mol Biochem Parasitol* 1991; 48: 121-130. [https://doi.org/10.1016/0166-6851\(91\)90108-i](https://doi.org/10.1016/0166-6851(91)90108-i)
  13. Carmena D, Benito A, Eraso E. The immunodiagnosis of *Echinococcus multilocularis* infection. *Clin Microbiol Infect* 2007; 13: 460-475. <https://doi.org/10.1111/j.1469-0691.2007.01665.x>
  14. Ishikawa Y, Sako Y, Itoh S, Ohtake T, Kohgo Y, Matsuno T, Ohsaki Y, Miyokawa N, Nakao M, Nakaya K, Ito A. Serological monitoring of progression of alveolar echinococcosis with multiorgan involvement by use of recombinant Em18. *J Clin Microbiol* 2009; 47: 3191-3196. <https://doi.org/10.1128/JCM.01111-09>
  15. Sako Y, Nakao M, Nakaya K, Yamasaki H, Gottstein B, Lightowers MW, Schantz PM, Ito A. Alveolar echinococcosis: characterization of diagnostic antigen Em18 and serological evaluation of recombinant Em18. *J Clin Microbiol* 2002; 40: 2760-2765. <https://doi.org/10.1128/JCM.40.8.2760-2765.2002>
  16. Kem P. Clinical features and treatment of alveolar echinococcosis. *Curr Opin Infect Dis* 2010; 23: 505-512. <https://doi.org/10.1097/QCO.0b013e32833d7516>
  17. Ahn CS, Cai H, Kim JG, Han X, Ma X, Bae YA, Yang HJ, Kang I, Wang H, Kong Y. An *Echinococcus multilocularis* antigen B3 proteoform that shows specific antibody responses to active-stage alveolar echinococcosis. *J Clin Microbiol* 2015; 53: 3310-3317. <https://doi.org/10.1128/JCM.01362-15>
  18. Sulima M, Nahorski W, Gorycki T, Wołyniec W, Wąz P, Felczak-Korzybska I, Szostakowska B, Sikorska K. Ultrasound images in hepatic alveolar echinococcosis and clinical stage of the disease. *Adv Med Sci* 2019; 64: 324-330. <https://doi.org/10.1016/j.advms.2019.04.002>
  19. Han X, Kim JG, Wang H, Cai H, Ma X, Duong DH, Ahn CS, Kang I, Kong Y. Survey of echinococcoses in southeastern Qinghai Province, China, and serodiagnostic insights of recombinant *Echinococcus granulosus* antigen B isoforms. *Parasite Vectors* 2019; 12: 323. <https://doi.org/10.1186/s13071-019-3569-6>
  20. Ahn CS, Bae YA, Kim SH, Kim JG, Yu JR, Yang HJ, Eom KS, Wang H, Kang I, Yang Y, Kong Y. Spatiotemporal expression patterns and antibody reactivity of Taeniidae endophilin B1. *J Clin Microbiol* 2016; 54: 2553-2562. <https://doi.org/10.1128/JCM.01135-16>
  21. Dawar FU, Xiong Y, Khattak MNK, Li J, Lin L, Mei J. Potential role of cyclophilin A in regulating cytokine secretion. *J Leukoc Biol* 2017; 102: 989-992. <https://doi.org/10.1189/jlb.3RU0317-090RR>
  22. Unno H, Matsuyama K, Tsuji Y, Goda S, Hiemori K, Tateno H, Hirabayashi J, Hatakeyama T. Identification, characterization, and X-ray crystallographic analysis of a novel type of mannose-specific lectin CGL1 from the pacific oyster *Crassostrea gigas*. *Sci Rep* 2016; 6: 29135. <https://doi.org/10.1038/srep29135>
  23. Nakaya K, Mamuti W, Xiao N, Sato MO, Wandra T, Nakao M, Sako Y, Yamasaki H, Ishikawa Y, Craig PS, Schantz PM, Ito A. Usefulness of severe combined immunodeficiency (scid) and inbred mice for studies of cysticercosis and echinococcosis. *Parasitol Int* 2006; 55 (suppl): 91-97. <https://doi.org/10.1016/j.parint.2005.11.014>
  24. Müller N, Frei E, Nuñez S, Gottstein B. Improved serodiagnosis of alveolar echinococcosis of humans using an in vitro-produced *Echinococcus multilocularis* antigen. *Parasitology* 2007; 134: 879-888. <https://doi.org/10.1017/S0031182006002083>
  25. Hemphill A, Gottstein B. Immunology and morphology studies on the proliferation of in vitro cultivated *Echinococcus multilocularis* metacestodes. *Parasitol Res* 1995; 81: 605-614. <https://doi.org/10.1007/BF00932028>
  26. Matsumoto J, Kouguchi H, Oku Y, Yagi K. Primary alveolar echinococcosis: course of larval development and antibody responses in intermediate host rodents with different genetic backgrounds after oral infection with eggs of *Echinococcus multilocularis*. *Parasitol Int* 2010; 59: 435-444. <https://doi.org/10.1016/j.parint.2010.06.003>
  27. Tsai IJ, Zarowiecki M, Holroyd N, Garciarubio A, Sánchez-Flores A, Brooks KL, Tracey A, Bobes RJ, Fragoso G, Scitutto E, Aslett M, Beasley H, Bennett HM, Cai X, Camicia F, Clark R, Cucher M, De Silva N, Day TA, Deplazes P, Estrada K, Fernández C, Holland PWH, Hou J, Hu S, Huckvale T, Hung SS, Kamenetzky L, Keane JA, Kiss E, Koziol U, Lambert O, Liu K, Luo X, Luo Y, Macchiaroli N, Nichol S, Paps J, Parkinson J, Pouchkina-Stantcheva N, Riddiford N, Rosenzvit M, Salinas G, Wasmuth JD, Zamanian M, Zheng Y; Taenia solium Genome Consortium, Cai J, Soberón X, Olson PD, Lactette JP, Brehm K, Berriman M. The genomes of four tapeworm species reveal adaptations to parasitism. *Nature* 2013; 496: 57-63. <https://doi.org/10.1038/nature12031>
  28. Ahn CS, Kim JG, Han X, Kang I, Kong Y. Comparison of *Echinococcus multilocularis* and *Echinococcus granulosus* hydatid fluid proteome provides molecular strategies for specialized host-parasite

- interactions. *Oncotarget* 2017; 8: 97009-97024. <https://doi.org/10.18632/oncotarget.20761>
29. Twu O, Johnson PJ. Parasite extracellular vesicles: mediators of intercellular communication. *PLoS Pathog* 2014; 10: e1004289. <https://doi.org/10.1371/journal.ppat.1004289>
30. Nicolao MC, Rodriguez Rodrigues C, Cumino AC. Extracellular vesicles from *Echinococcus granulosus* larval stage: isolation, characterization and uptake by dendritic cells. *PLoS Negl Trop Dis* 2019; 13: e0007032. <https://doi.org/10.1371/journal.pntd.0007032>
31. Drurey C, Maizels RM. Helminth extracellular vesicles: interactions with the host immune system. *Mol Immunol* 2021; 137: 124-133. <https://doi.org/10.1016/j.molimm.2021.06.017>
32. Ancarola ME, Marcilla A, Herz M, Macchiaroli N, Pérez M, Asurmendi S, Brehm K, Poncini C, Rosenzvit M, Cucher M. Cestode parasites release extracellular vesicles with microRNAs and immunodiagnostic protein cargo. *Int J Parasitol* 2017; 47: 675-686. <https://doi.org/10.1016/j.ijpara.2017.05.003>
33. Hernández-González A, Santivañez S, García HH, Rodríguez S, Muñoz S, Ramos G, Orduña A, Siles-Lucas M. Improved serodiagnosis of cystic echinococcosis using the new recombinant 2B2t antigen. *PLoS Negl Trop Dis* 2012; 6: e1714. <https://doi.org/10.1371/journal.pntd.0001714>
34. Ahn CS, Kim JG, Han X, Bae YA, Park WJ, Kang I, Wang H, Kong Y. Biochemical characterization of *Echinococcus multilocularis* antigen B3 reveals insight into adaptation and maintenance of parasitic homeostasis at the host-parasite interface. *J Proteome Res* 2017; 16: 806-823. <https://doi.org/10.1021/acs.jproteome.6b00799>