

# A genome-wide association study (GWAS) for pH value in the meat of Berkshire pigs

Jun Park<sup>#</sup>, Sang-Min Lee<sup>#</sup>, Ja-Yeon Park and Chong-Sam Na<sup>\*</sup>

*Department of Animal Biotechnology, Jeonbuk National University, Jeonju 54896, Korea*



Received: Aug 7, 2020  
 Revised: Oct 28, 2020  
 Accepted: Nov 10, 2020

<sup>#</sup>These authors contributed equally to this work.

#### \*Corresponding author

Chong-Sam Na  
 Department of Animal Biotechnology,  
 Jeonbuk National University, Jeonju  
 54896, Korea.  
 Tel: +82-63-270-2607  
 E-mail: csna@jbnu.ac.kr

Copyright © 2021 Korean Society of Animal Sciences and Technology. This is an Open Access article distributed under the terms of the Creative Commons Attribution Non-Commercial License (<http://creativecommons.org/licenses/by-nc/4.0/>) which permits unrestricted non-commercial use, distribution, and reproduction in any medium, provided the original work is properly cited.

#### ORCID

Jun Park  
<https://orcid.org/0000-0003-2682-5177>  
 Sang-Min Lee  
<https://orcid.org/0000-0001-8549-879X>  
 Ja-Yeon Park  
<https://orcid.org/0000-0002-7013-4683>  
 Chong-Sam Na  
<https://orcid.org/0000-0002-8979-5633>

#### Competing interests

No potential conflict of interest relevant to this article was reported.

#### Funding sources

Not applicable.

#### Acknowledgements

This research was supported by Basic Science Research Program through the National Research Foundation of Korea(NRF) funded by the Ministry of

#### Abstract

The purpose of this study is to estimate the single nucleotide polymorphism (SNP) effect for pH values affecting Berkshire meat quality. A total of 39,603 SNPs from 1,978 heads after quality control and 882 pH values were used estimate SNP effect by single step genomic best linear unbiased prediction (ssGBLUP) method. The average physical distance between adjacent SNP pairs was 61.7kbp and the number and proportion of SNPs whose minor allele frequency was below 10% were 9,573 and 24.2%, respectively. The average of observed heterozygosity and polymorphic information content was  $0.32 \pm 0.16$  and  $0.26 \pm 0.11$ , respectively and the estimate for average linkage disequilibrium was 0.40. The heritability of pH45m and pH24h were 0.10 and 0.15 respectively. SNPs with an absolute value more than 4 standard deviations from the mean were selected as threshold markers, among the selected SNPs, protein-coding genes of pH45m and pH24h were detected in 6 and 4 SNPs, respectively. The distribution of coding genes <RFX8, CREG2, TBC1D8, EXOC6B> were detected at pH45m and <C12orf49, LOC106506010, BICC1, ANK3> were detected at pH24h.

**Keywords:** Berkshire, pH value, Heritability, Linkage disequilibrium, Genome-wide association study

## INTRODUCTION

pH value in the meat of pigs is associated with meat color, drip loss and moisture holding capacity; as pH increases, drip loss and cooking loss decrease, but moisture holding capacity increases, thereby affecting meat quality [1]. Meat pH value in pigs has been a subject of extensive research [2–5] it is well known that changes in pH after slaughter are of great importance in protein denaturation and drip loss in post mortem changes in muscle [6].

Investigating genetic characteristics related to meat pH value in domestic pigs is currently a priority because it involves basic stages in genomic selection using accumulated genomic information. If a reference population that increases selection accuracy can be established in the future, it would be possible to improve the accuracy of estimate breeding values for the various selection traits, by using genomic information and phenotypic data in addition to pedigree information [7].

Through a genome-wide association study (GWAS) among populations using linkage disequilibrium (LD), it is possible to detect the relationships between single nucleotide polymorphisms (SNPs) that affect economic traits, while quantitative trait loci (QTL) can be excavated and tagging

Education, Korea(NRF-2020R111A3072920). We would also like to express our gratitude to the editors of the Writing Center at Jeonbuk National University for their skilled English-language assistance.

#### Availability of data and material

Upon reasonable request, the datasets of this study can be available from the corresponding author.

#### Authors' contributions

Conceptualization: Park J, Na CS.  
Data curation: Park J, Lee SM.  
Formal analysis: Park J, Lee SM.  
Methodology: Park J, Lee SM, Na CS.  
Software: Park J, Lee SM.  
Validation: Na CS.  
Investigation: Lee SM, Park JY.  
Writing - original draft: Park J, Lee SM, Park JY.  
Writing - review & editing: Park J, Lee SM, Na CS.

#### Ethics approval and consent to participate

This article does not require IRB/IACUC approval because there are no human and animal participants.

SNPs selected. Since its first used by [8], polymorphic information content (PIC) had become the most widely applied method for genetic studies to measure the information content of molecular markers. The PIC value of marker is defined as the expected fraction of informative offspring from pedigree [9]. Heterozygosity refers to the ratio of heterozygote in the locus, and observed heterozygosity (OHE) was investigated to analyze the actual heterozygosity degree of each marker for the population. Through the single-step genomic best linear unbiased prediction (ssGBLUP) using an algorithm that combines existing pedigree information with genomic information, expected breeding value (EBV) and genomic expected breeding value (GEBV) can be estimated simultaneously, while through the Back solution, SNPs effects can be estimated [10,11].

For the pigs, studies on the excavation of quantitative traits for economic traits have been performed continually, primarily using GWAS [12–14]. The present experiment was conducted to estimate the SNP effects that affect pH value in the meat of Berkshire pigs.

## MATERIALS AND METHODS

### SNP data and quality control

A total of 2,037 heads were genotyped using Porcine SNP60k v2 Beadchip (Illumina, San Diego, CA, USA) and 61,565 SNPs were collected. To ensure the quality of the genotypic data, the following SNP types were excluded from the analysis: SNP on sex chromosomes (1,458); SNP without information on chromosomes (7,849); SNP with missing rate higher than 10%; SNP without polymorphism (all homo or hetero); SNP with minor allele frequency lower than 1%; SNP with Hardy-Weinberg disequilibrium chi-squared value greater than 23.93 ( $p < 10^{-6}$ ); and animals with SNP missing rate higher than 10%. 59 heads were found to have an SNP missing rate higher than 10%. Therefore, the number of animals and SNPs included after quality control was 1,978 and 39,603, respectively (Table 1).

### pH value data

Data on pH values were collected from 882 heads of pigs slaughtered at Namwon Jeil Food between 2015 and 2018. A pH\*21K meter (NWK-Binär GmbH., Buchloe, Germany) was inserted into the sirloin muscle and pH values were measured 3 times each at 45 min (pH45m) and at 24

**Table 1. Quality control of the single nucleotide polymorphism (SNP) dataset**

Description	No. of heads and SNPs
Total number of animals	2,037
Animals with missing SNPs over 0.10%	59
Selected animals	1,978
Total number of SNPs	61,565
SNPs with unknown position	7,849
SNPs on sex chromosome (X, Y)	1,458
Number of SNPs on autosome (1–18)	52,258
Selected (useful) SNPs:	39,603
Outlier SNPs	12,669
- All homo SNPs	4,280
- All hetero SNPs	2
- SNPs with missing > 10%	510
- SNPs with minor allele frequency < 1%	6,786
- SNPs with Hardy-Weinberg equilibrium test > 23.93	1,091

hours (pH24h) after slaughter, and the average values were recorded.

### Statistical model

**Variance Components:** Using the multiple traits animal model, we estimated the variance component and genetic parameters of the pH values, and the equation is as follows:

$$y_{ijkl} = \mu + YM_{it} + s_{jt} + a_{ik} + e_{ijkl}$$

Where,  $y_{ijkl}$  is observed values of  $t$  th trait,  $\mu$  is overall mean,  $YM_{it}$  is the  $i$ th fixed effect of slaughter year-month,  $s_{jt}$  is the  $j$  th fixed effect of sex,  $a_{ik}$  is the  $k$  th additive genetic effect,  $e_{ijkl}$  is the residual random effects. We used VCE ver. 6.0 [15] to estimated variance components with pH45m and pH24h.

**Estimation of genomic breeding values:** The slaughter year-month (YM) and sex were included as fixed effects in a statistical analysis that used the following model:

$$y_i = X_i b_i + Z_i a_i + e_i$$

Where,  $y_i$  is the vector of observation in  $i$  th trait,  $b_i$  is the vector of fixed effect,  $a_i$  is the vector of additive genetic random effect,  $e_i$  is the vector of residual effect,  $X_i$  and  $Z_i$  were known incidence matrix corresponding to  $b_i$  and  $a_i$  respectively. Mixed model equation was as follows:

$$\begin{bmatrix} X'X & X'Z \\ Z'X & Z'Z + \alpha H^{-1} \end{bmatrix} \begin{bmatrix} \hat{b} \\ \hat{a} \end{bmatrix} = \begin{bmatrix} X'y \\ Z'y \end{bmatrix}$$

Where,  $\alpha = \sigma_e^2 / \sigma_a^2$ ,  $H^{-1} = A^{-1} + \begin{bmatrix} 0 & 0 \\ 0 & G^{-1} - A_{22}^{-1} \end{bmatrix}$ ,  $A^{-1}$  is the inverse matrix of numerator relationship matrix,  $G^{-1}$  is the inverse matrix of genomic relationship matrix,  $A_{22}^{-1}$  is the inverse matrix of numerator relationship matrix of pigs with genomic information.

**SNP effect:** The SNP effect of each marker was estimated through reverse operation method of GEBVs and equation was as follows:

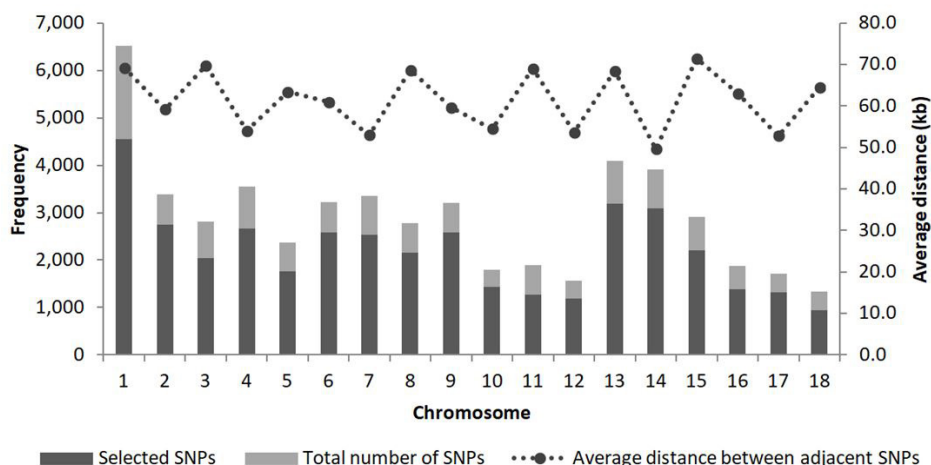
$$\hat{u} = \lambda DZ'G^{*-1}\hat{a}_g = DZ'(ZDZ)^{-1}\hat{a}_g$$

Where,  $\hat{u}$  is the vector of SNP effect,  $\hat{a}_g$  is the vector of GEBV,  $Z$  is the coefficient matrix of SNP,  $D$  is the weighted vector [16,17]. We used BLUPF90 family program [18] to estimated SNP effects with pH45m and pH24h.

## RESULTS AND DISCUSSION

### Genetic characteristics

The average physical distance between adjacent SNP pairs was 61.7 kbp (Fig. 1). The number and proportion of SNPs whose minor allele frequency (MAF) was below 10% were 9,573 and 24.2%, respectively, while those for which it was higher than 40% were 7,343 and 18.5%. The number and proportion of SNPs for which the physical distance between adjacent SNP pairs was less than 1 kbp were 415 and 1.0%, respectively, while those for which it was in the range between 10 kbp and



**Fig. 1.** Total number of SNPs, selected SNPs and average distance between adjacent SNP pairs in each chromosome. SNP, single nucleotide polymorphism.

100 kbp were 30,345 and 76.6%, respectively (Table 2).

OHE was  $0.32 \pm 0.16$  on average, and in most chromosomes was within the range of 0.31–0.33; it was highest in chromosome 8 (0.36) and lowest in chromosome 15 (0.25). PIC was  $0.26 \pm 0.11$  on average, within the range of 0.22–0.28 (Table 3).

Lee et al. [19] have reported that OHE estimates in Berkshire, Landrace, and Yorkshire were  $0.33 \pm 0.15$ ,  $0.36 \pm 0.14$  and  $0.36 \pm 0.14$ , respectively while estimates for the PIC were on average  $0.26 \pm 0.11$ ,  $0.28 \pm 0.10$  and  $0.29 \pm 0.10$ , respectively. Compared with the results from this experiment with our own, the OHE estimates obtained from our experiment were slightly lower but similar, while PIC estimates were similar.

The estimate for average LD ( $r^2$ ) was 0.40, which was high in the order of chromosomes 1 (0.45), 14 (0.44), 15, and 18 (0.42) (Table 4).

Clearly markers with greater numbers of alleles tend to have higher PIC values and thus are more informative [9]. In the results of this study, it can be seen that the values of MAF, OHE, and PIC tend to be low. This seems to be a result of high immobilization of Berkshire breed used in the study.

### pH value

Estimates for pH45m and pH24h values were on average 6.40 ( $\pm 0.20$ ) and 5.90 ( $\pm 0.12$ ), respectively (Table 5). Ryu et al. [20] have reported that in the Berkshire breed the average pH45m

**Table 2.** Minor allele frequency (MAF) and the distance between adjacent SNP pairs (kbp) and percentage (%)

MAF		Distance between adjacent SNP pairs (kbp)	
Criteria	Frequency (%)	Criteria	Frequency (%)
MAF < 0.1	9,573 (24.2)	ADAM < 1	415 (1.0)
0.1 ≤ MAF < 0.2	7,787 (19.7)	1 ≤ ADAM < 10	2,599 (6.6)
0.2 ≤ MAF < 0.3	7,899 (19.9)	10 ≤ ADAM < 100	3,0345 (76.6)
0.3 ≤ MAF < 0.4	7,001 (17.7)	100 ≤ ADAM < 1,000	6,217 (15.7)
0.4 ≤ MAF	7,343 (18.5)	1,000 ≤ ADAM	27 (0.1)

SNP, single nucleotide polymorphism; ADAM, average distance between adjacent SNP pairs.

**Table 3.** The number of SNPs, means ( $\pm$  SD) of minor allele frequency (MAF), the observed heterozygosity (OHE) and the polymorphic information content (PIC) by chromosome

Chr. No.	SNPs	MAF	OHE	PIC
1	4,552	0.23 $\pm$ 0.14	0.32 $\pm$ 0.15	0.26 $\pm$ 0.11
2	2,744	0.23 $\pm$ 0.14	0.31 $\pm$ 0.16	0.25 $\pm$ 0.11
3	2,045	0.23 $\pm$ 0.15	0.32 $\pm$ 0.16	0.25 $\pm$ 0.11
4	2,657	0.25 $\pm$ 0.16	0.33 $\pm$ 0.16	0.26 $\pm$ 0.11
5	1,756	0.22 $\pm$ 0.14	0.31 $\pm$ 0.16	0.25 $\pm$ 0.11
6	2,582	0.26 $\pm$ 0.15	0.35 $\pm$ 0.15	0.27 $\pm$ 0.11
7	2,535	0.25 $\pm$ 0.15	0.34 $\pm$ 0.16	0.26 $\pm$ 0.11
8	2,156	0.27 $\pm$ 0.15	0.36 $\pm$ 0.16	0.28 $\pm$ 0.11
9	2,575	0.23 $\pm$ 0.15	0.32 $\pm$ 0.16	0.25 $\pm$ 0.11
10	1,426	0.22 $\pm$ 0.15	0.31 $\pm$ 0.17	0.24 $\pm$ 0.12
11	1,271	0.22 $\pm$ 0.15	0.31 $\pm$ 0.17	0.24 $\pm$ 0.12
12	1,184	0.24 $\pm$ 0.15	0.33 $\pm$ 0.16	0.26 $\pm$ 0.11
13	3,186	0.24 $\pm$ 0.15	0.33 $\pm$ 0.16	0.26 $\pm$ 0.11
14	3,095	0.23 $\pm$ 0.15	0.33 $\pm$ 0.16	0.25 $\pm$ 0.11
15	2,201	0.20 $\pm$ 0.15	0.28 $\pm$ 0.17	0.22 $\pm$ 0.12
16	1,378	0.23 $\pm$ 0.14	0.33 $\pm$ 0.15	0.26 $\pm$ 0.11
17	1,314	0.23 $\pm$ 0.14	0.32 $\pm$ 0.15	0.25 $\pm$ 0.10
18	946	0.25 $\pm$ 0.15	0.34 $\pm$ 0.15	0.27 $\pm$ 0.11
Overall	39,603	0.24 $\pm$ 0.15	0.32 $\pm$ 0.16	0.26 $\pm$ 0.11

SNP, single nucleotide polymorphism.

**Table 4.** Linkage disequilibrium ( $r^2$ ) by chromosome

Chromosome no	No. of SNPs	No. of SNP pairs	Linkage disequilibrium ( $r^2$ )	
			All pairs	Adjacent pairs
1	4,552	10,358,076	0.04	0.45
2	2,744	3,763,396	0.03	0.39
3	2,045	2,089,990	0.03	0.41
4	2,657	3,528,496	0.03	0.40
5	1,756	1,540,890	0.03	0.37
6	2,582	3,332,071	0.03	0.39
7	2,535	3,211,845	0.03	0.40
8	2,156	2,323,090	0.04	0.41
9	2,575	3,314,025	0.03	0.37
10	1,426	1,016,025	0.02	0.35
11	1,271	807,085	0.03	0.39
12	1,184	700,336	0.03	0.41
13	3,186	5,073,705	0.03	0.40
14	3,095	4,787,965	0.04	0.44
15	2,201	2,421,100	0.03	0.42
16	1,378	948,753	0.03	0.38
17	1,314	862,641	0.04	0.40
18	946	446,985	0.04	0.42
Overall	39,603	50,526,474	0.03	0.40

SNP, single nucleotide polymorphism.

**Table 5.** Means and SD, minimum (Min), maximum (Max) and skewness for traits (n = 882 heads)

Traits	Mean $\pm$ SD	Min	Max	Skewness
pH value after 45 minutes	6.40 $\pm$ 0.20	5.94	7.09	0.22
pH value after 24 hours	5.90 $\pm$ 0.12	5.58	6.63	0.73

estimates in females and males were 6.26 ( $\pm$  0.08) and 6.15 ( $\pm$  0.05), respectively, while for pH24h they were 5.61 ( $\pm$  0.02) and 5.69 ( $\pm$  0.01) for female and male pigs, respectively. The same study also has reported that pH45m estimates for in females and males were 5.80 ( $\pm$  0.04) and 5.92 ( $\pm$  0.05), respectively, in Landrace and 6.05 ( $\pm$  0.02), 5.98 ( $\pm$  0.03), respectively, in Yorkshire while for pH24h estimates were 5.49 ( $\pm$  0.01) and 5.51 ( $\pm$  0.02) in in Landrace females and males and 5.56 ( $\pm$  0.01), and 5.56 ( $\pm$  0.01) in Yorkshire pigs. In view of these results, average pH values in the Berkshire breed appear to be higher than in other breeds.

### Genetic parameters

The genetic parameters of pH45m and pH24h were estimated using VCE6.0 software. Heritability estimates for pH45m and pH24h were 0.10 and 0.15, respectively, while for the phenotypic and genetic correlation between 2 traits they were 0.05 and 0.27, respectively (Table 6). Lee et al. [21] have reported that in the domestic Berkshire breed heritability estimates for pH45m and pH24h were 0.48 and 0.15, respectively. When compare with pH45m and pH24h in this study, the heritability estimates for pH45m obtained from this experiment were lower, while those for the pH24h were similar.

### Genome-wide association study

Estimates of SNP effects for pH45m and pH24h were within the ranges of  $-0.00011536$  to  $0.00011866$  and  $-0.00009704$  to  $0.00009562$ , respectively (Fig. 2). Suitability for normal distribution of SNP effects was tested by 3 methods, but the SNP effects were not normally distributed (Table 7). Absolute values were taken for estimated SNP effects and when expressed as the gamma distribution, most values were near zero, with only a few SNPs having larger effects (Fig. 3).

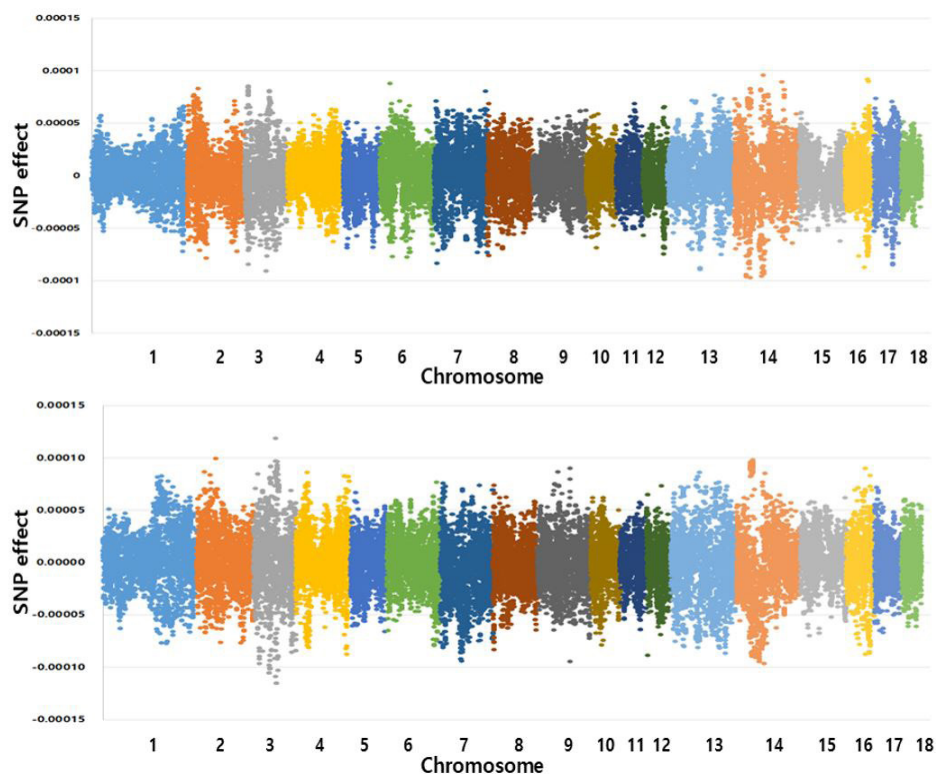
After standardizing estimates for SNP effects, absolute values were taken and were expressed as a Manhattan plot compared to their relative sizes (Fig. 4).

In normal distribution, values within 3 standard deviations of the mean account for approximately 99.74% of the data set. Therefore, SNPs with an absolute value more than 4 standard deviations from the mean were selected as threshold markers. Although the number of SNPs with an absolute value of more than 4 standard deviations was 12 for pH45m and 23 for pH24h (Tables 8 and 9), no significant SNP effects were observed. This may be due to the small number of animals used in the analysis in relation to the number of SNPs.

**Table 6.** Additive ( $\sigma_a^2$ ), residual ( $\sigma_e^2$ ) variance components, heritabilities ( $h^2$ )  $\pm$  SE, genetic and phenotypic correlations

Trait	$\sigma_a^2$	$\sigma_e^2$	$h^2 \pm$ SE	Correlation <sup>1)</sup>	
				1	2
pH45m	0.0039	0.0351	0.10 $\pm$ 0.04	-	0.05
pH24h	0.0021	0.0117	0.15 $\pm$ 0.07	0.27	-

<sup>1)</sup>Upper triangle: phenotypic, lower triangle: genetic correlation  
pH45m, pH value after 45 minutes; pH24h, pH value after 24 hours.

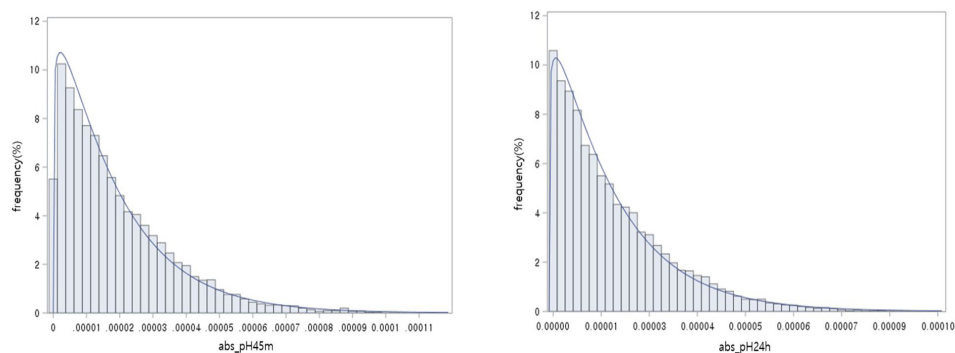


**Fig. 2.** The Manhattan plots of SNP effects for pH45m (top) and pH24h (bottom). SNP, single nucleotide polymorphism; pH45m, pH value after 45 minutes; pH24h, pH value after 24 hours.

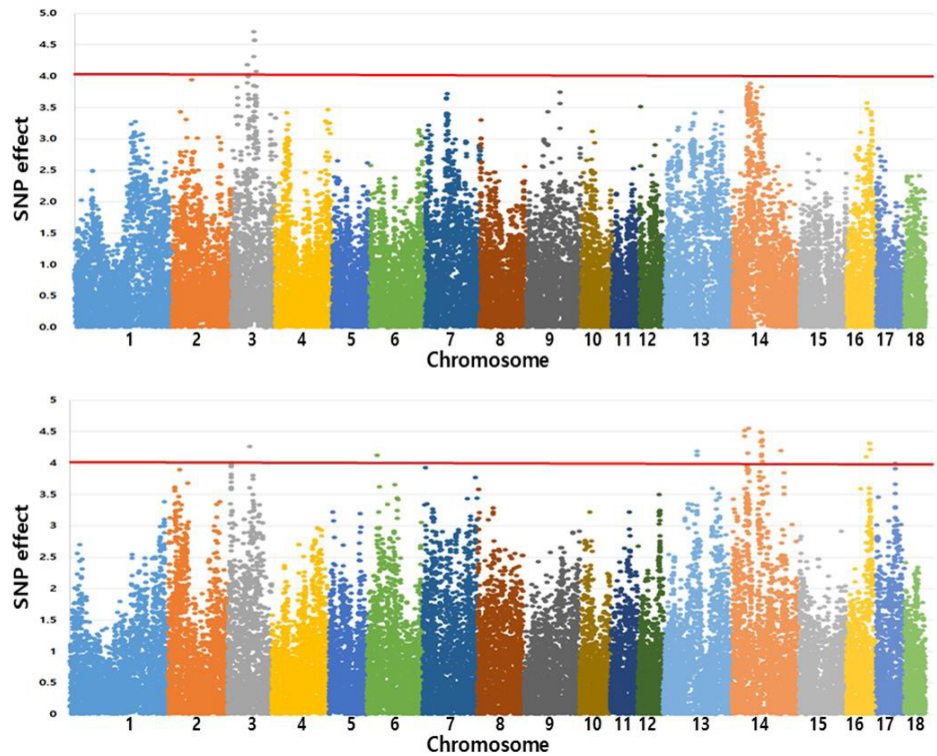
**Table 7.** Goodness-of-fit tests for gamma distribution of estimated single nucleotide polymorphism effects for pH45m and pH24h

Test method	pH45m		pH24h	
	Statistics	p-value	Statistics	p-value
Kolmogorov-Smirnov (D)	0.0438	< 0.010	0.0470	< 0.010
Cramer-von Mises (W-Sq)	24.2362	< 0.005	26.4829	< 0.005
Anderson-Darling (A-Sq)	131.9259	< 0.005	142.2137	< 0.005

pH45m, pH value after 45 minutes; pH24h, pH value after 24 hours.



**Fig. 3.** Distribution of the estimated SNP effects for pH45m and pH24h (from left to right). SNP, single nucleotide polymorphism; pH45m, pH value after 45 minutes; pH24h, pH value after 24 hours.



**Fig. 4.** The Manhattan plots of SNP effects for pH45m (top) and pH24h (bottom). SNP, single nucleotide polymorphism; pH45m, pH value after 45 minutes; pH24h, pH value after 24 hours.

**Table 8.** Single nucleotide polymorphism (SNP) name, chromosome number, position, SNP effect, and the absolute standardized SNP effect of more than 4.0 SD value for pH45m

SNP name	Chromosome no.	Position	SNP effect	SD value	Gene
ALGA0018913	3	52,341,746	-0.00010541	4.18	-
ASGA0014539	3	52,364,937	-0.00010541	4.18	-
MARC0058854	3	52,395,385	-0.00010541	4.18	-
MARC0113402	3	55,440,515	-0.00010137	4.02	RFX8
MARC0100326	3	55,496,228	-0.00010137	4.02	CREG2
MARC0065978	3	55,717,402	-0.00010129	4.02	TBC1D8
ALGA0109549	3	70,398,391	0.00011866	4.71	-
ALGA0123349	3	71,272,011	-0.00010881	4.32	-
ALGA0115738	3	73,401,689	-0.00011512	4.57	EXOC6B
ASGA0015062	3	73,620,620	-0.00011536	4.58	EXOC6B
ASGA0015063	3	73,655,252	-0.00011512	4.57	EXOC6B
ASGA0015149	3	77,918,476	-0.00010268	4.07	-

pH45m, pH value after 45 minutes.

Six markers (MARC0113402, MARC0100326, MARC0065978, ALGA0115738, ASGA0015062, and ASGA0015063) that had similar effects nearby markers with significant effects due to LD were detected in chromosome 3 for pH45m, while for pH24h 9 markers were detected (ASGA0063851, MARC0002354, ALGA0078206, ALGA0078209, H3GA0040626, MARC0035949, ALGA0078332, ASGA0064086, and DRGA0013964) in chromosome 14,



**Table 9.** Single nucleotide polymorphism (SNP) name, chromosome number, position, SNP effect, and the absolute standardized SNP effect of more than 4.0 SD value for pH24h

SNP name	Chromosome no.	Position	SNP effect	SD value	Gene
ALGA0103420	3	12,391,759	0.00008524	4.00	-
DRGA0003994	3	68,872,452	-0.00009083	4.26	-
ALGA0034886	6	22,138,877	0.00008788	4.13	-
ASGA0058278	13	87,630,099	-0.00008789	4.13	-
ALGA0071104	13	87,673,969	-0.00008789	4.13	-
ALGA0071112	13	87,817,848	-0.00008923	4.19	-
ALGA0076523	14	28,452,469	-0.00009619	4.52	-
ASGA0062369	14	28,514,480	-0.00009427	4.43	-
ALGA0076795	14	35,337,304	-0.00008852	4.16	-
ALGA0076917	14	37,944,008	-0.00009704	4.56	C12orf49
ASGA0063851	14	64,162,095	-0.00009575	4.50	-
MARC0002354	14	65,759,779	-0.00009236	4.34	LOC106506010
ALGA0078206	14	66,049,762	-0.00009236	4.34	-
ALGA0078209	14	66,064,581	-0.00008742	4.10	-
H3GA0040626	14	66,104,353	-0.00008825	4.14	-
MARC0035949	14	66,720,501	0.00009562	4.49	BICC1
ALGA0078332	14	68,085,933	-0.00008572	4.03	-
ASGA0064086	14	68,391,390	-0.00009314	4.37	-
DRGA0013964	14	68,757,221	-0.00009105	4.28	ANK3
ASGA0065748	14	112,580,639	0.00008940	4.20	-
ASGA0073613	16	60,183,758	-0.00008739	4.10	-
MARC0005838	16	70,524,616	0.00009182	4.31	-
ALGA0110277	16	71,292,574	0.00008973	4.21	-

pH24h, pH value after 24 hours.

whose SNPs were in the LD blocks.

Among the SNPs with an absolute value of more than 4 standard deviations, for pH45m and pH24h protein-coding genes were detected in 6 and 4 SNPs, respectively.

For distribution of protein coding genes, a total of 4 genes, <RFX8 (MARC0113402), CREG2 (MARC0100326), TBC1D8 (MARC0065978), and EXOC6B (ALGA0115738, ASGA0015062, ASGA0015063)> were detected in chromosome 3 for pH45m, while for pH24h C12orf49 (ALGA0076917), LOC106506010 (MARC0002354), BICC1 (MARC0035949) and ANK3 (DRGA0013964) were detected in chromosome 14.

Edwards et al. [22] have reported that QTL were discovered for 45-min pH and pH decline on SSC 3 and this QTL region affecting pH on SSC 3 was in a similar location to a pH QTL reported by [23]. When compare with this study, since the markers that we detected in the SSC 3 region are close to or belong to the previously investigated QTL region, it is necessary to study whether they can potentially affect the pH.

## REFERENCES

1. Huff-Lonergan E, Baas TJ, Malek M, Dekkers JCM, Prusa K, Rothschild MF. Correlations among selected pork quality traits. *J Anim Sci.* 2002;80:617-27. <https://doi.org/10.2527/2002.803617x>

2. Choi YI, Kim YT, Lee CL, Han IK. Carcass and pork quality characteristics by sex and marketing day. *Korean J Anim Sci.* 2000;42:933-40.
3. Lee J, Joo Y, Shin W, Cho K, Lee J, Lee J, et al. Comparison of carcass and pork physical characteristics by market weight and gender of Berkshire. *Korean J Food Sci Anim Resour.* 2004;24:108-14.
4. Hah KH, Kim IS, Jin SK, Nam YW, Cho JH. Proximate composition and physico-chemical characteristics of Berkshire pork by gender. *Korean J Food Sci Anim Res.* 2007;27:137-41. <https://doi.org/10.5851/kosfa.2007.27.2.137>
5. Park BY, Cho SH, Kim JH, Seong PN, Kang GH, Jeong D, et al. Comparison of pork quality by different Berkshire line. *Korean J Food Sci Anim Res.* 2010;30:867-71. <https://doi.org/10.5851/kosfa.2010.30.5.867>
6. Bendall J. Postmortem changes in muscle. In: Bourne GH, editor. *The structure and function of muscle: structure.* New York, NY: Academic Press; 1973. p. 243-309.
7. Hayes BJ, Bowman PJ, Chamberlain AJ, Goddard ME. Invited review: genomic selection in dairy cattle: progress and challenges. *J Dairy Sci.* 2009;92:433-43. <https://doi.org/10.3168/jds.2008-1646>
8. Botstein D, White RL, Skolnick M, Davis RW. Construction of a genetic linkage map in man using restriction fragment length polymorphisms. *Am J Hum Genet.* 1980;32:314-31.
9. Hildebrand CE, David C, Torney C, Wagner RP. Informativeness of polymorphic DNA markers. *Los Alamos Sci.* 1994;20:100-2.
10. Legarra A, Aguilar I, Misztal I. A relationship matrix including full pedigree and genomic information. *J Dairy Sci.* 2009;92:4656-63. <https://doi.org/10.3168/jds.2009-2061>
11. VanRaden PM. Efficient methods to compute genomic predictions. *J Dairy Sci.* 2008;91:4414-23. <https://doi.org/10.3168/jds.2007-0980>
12. Knol EF, Nielsen B, Knap PW. Genomic selection in commercial pig breeding. *Anim Front.* 2016;6:15-22. <https://doi.org/10.2527/af.2016-0003>
13. Puig-Oliveras A, Folch A, Ballester D. Genetic dissection of growth and meat quality traits in pigs. Barcelona, Spain: Universitat Autònoma de Barcelona; 2015.
14. Qiao R, Gao J, Zhang Z, Li L, Xie X, Fan Y, et al. Genome-wide association analyses reveal significant loci and strong candidate genes for growth and fatness traits in two pig populations. *Genet Sel Evol.* 2015;47:17. <https://doi.org/10.1186/s12711-015-0089-5>
15. Groeneveld E, Kovac M, Mielenz N. *VCE user's guide and reference manual, ver. 6.0.* Neustadt, Germany: Institute of Farm Animal Genetics, Friedrich Loeffler Institute (FLI); 2008.
16. Christensen OF, Madsen P, Nielsen B, Ostersen T, Su G. Single-step methods for genomic evaluation in pigs. *Animal.* 2012;6:1565-71. <https://doi.org/10.1017/s1751731112000742>
17. Wang HY, Misztal I, Aguilar I, Legarra A, Fernando RL, Vitezica Z, et al. Genome-wide association mapping including phenotypes from relatives without genotypes in a single-step (ssGWAS) for 6-week body weight in broiler chickens. *Front Genet.* 2014;5:134. <https://doi.org/10.3389/fgene.2014.00134>
18. Misztal I, Tsuruta S, Lourenco D, Aguilar I, Legarra A, Vitezica Z. *Manual for BLUPF90 family of programs.* Athens, GA: University of Georgia. 2014.
19. Lee SM, Oh JD, Park KD, Do KT. Analysis of genetic characteristics of pig breeds using information on single nucleotide polymorphisms. *Asian-Australas J Anim Sci.* 2019;32:485-93. <https://doi.org/10.5713/ajas.18.0304>
20. Ryu YC, Choi YM, Lee SH, Shin HG, Choe JH, Kim JM, et al. Comparing the histochemical characteristics and meat quality traits of different pig breeds. *Meat Sci.* 2008;80:363-9. <https://doi.org/10.1016/j.meatsci.2008.05.011>

[doi.org/10.1016/j.meatsci.2007.12.020](https://doi.org/10.1016/j.meatsci.2007.12.020)

21. Lee JH, Song KD, Lee HK, Cho KH, Park HC, Park KD. Genetic parameters of reproductive and meat quality traits in Korean berkshire pigs. *Asian-Australas J Anim Sci.* 2015;28:1388-93. <https://doi.org/10.5713/ajas.15.0097>
22. Edwards DB, Ernst CW, Raney NE, Doumit ME, Hoge MD, Bates RO. Quantitative trait locus mapping in an F2 Duroc × Pietrain resource population: II. carcass and meat quality traits. *J Anim Sci.* 2008;86:254-66. <https://doi.org/10.2527/jas.2006-626>
23. Beeckmann P, Schröffel J, Moser G, Bartenschlager H, Reiner G, Geldermann H. Linkage and QTL mapping for *Sus scrofa* chromosome 3. *J Anim Breed Genet.* 2003;120:20-7. <https://doi.org/10.1046/j.0931-2668.2003.00420.x>