



# Optimized Image-Based Surrogate Endpoints in Targeted Therapies for Glioblastoma: A Systematic Review and Meta-Analysis of Phase III Randomized Controlled Trials

Chong Hyun Suh, MD, Ho Sung Kim, MD, PhD, Seung Chai Jung, MD, PhD, Choong Gon Choi, MD, PhD, Sang Joon Kim, MD, PhD, Kyung Won Kim, MD, PhD

All authors: Department of Radiology and Research Institute of Radiology, University of Ulsan College of Medicine, Asan Medical Center, Seoul, Korea

**Objective:** We aimed to determine the optimized image-based surrogate endpoints (IBSEs) in targeted therapies for glioblastoma through a systematic review and meta-analysis of phase III randomized controlled trials (RCTs).

**Materials and Methods:** A systematic search of OVID-MEDLINE and EMBASE for phase III RCTs on glioblastoma was performed in December 2017. Data on overall survival (OS) and IBSEs, including progression-free survival (PFS), 6-month PFS (6moPFS), 12-month PFS (12moPFS), median PFS, and objective response rate (ORR) were extracted. Weighted linear regression analysis for the hazard ratio for OS and the hazard ratios or odds ratios for IBSEs was performed. The associations between IBSEs and OS were evaluated. Subgroup analyses according to disease stage (newly diagnosed glioblastoma versus recurrent glioblastoma), types of test treatment, and types of response assessment criteria were performed.

**Results:** Twenty-three phase III RCTs published between 2000 and 2017, including 8387 patients, met the inclusion criteria. OS showed strong correlations with PFS (standardized  $\beta$  coefficient [R] = 0.719), 6moPFS (R = 0.647), and 12moPFS (R = 0.638). OS showed no correlations with median PFS and ORR. In subgroup analysis according to types of therapies, PFS showed the highest correlations with OS in targeted therapies for cell cycle pathways (R = 0.913) and growth factor receptors and their downstream pathways (R = 0.962). 12moPFS showed the highest correlation with OS in antiangiogenic therapy (R = 0.821). The response assessment in neuro-oncology criteria provided higher correlation coefficients between OS and IBSEs than the Macdonald criteria.

**Conclusion:** Overall, PFS is an optimized IBSE in targeted therapies for glioblastoma; however, 12moPFS is optimal in antiangiogenic therapy.

**Keywords:** Glioblastoma; Randomized controlled trial; Biomarkers; Molecular targeted therapy

## INTRODUCTION

The efficacy of new cancer treatments is determined by their ability to improve overall survival (OS) in phase III randomized controlled trials (RCTs). Therefore, late-stage and pivotal trials should be based on improving OS. However, the use of OS as the primary endpoint requires a

long follow-up period and a large number of patients, which translate to large trial expenses. Furthermore, OS is often influenced by confounding factors, such as more effective subsequent therapies and a crossover study design. On the contrary, image-based surrogate endpoints (IBSEs), such as progression-free survival (PFS), can provide more rapid measures of treatment efficacy and are not influenced

Received November 9, 2019; accepted after revision December 19, 2019.

This research was supported by the Basic Science Research Program through the National Research Foundation of Korea (NRF) funded by the Ministry of Education, Science and Technology (grant number: NRF-2017R1A2A2A05001217).

**Corresponding author:** Ho Sung Kim, MD, PhD, Department of Radiology and Research Institute of Radiology, University of Ulsan College of Medicine, Asan Medical Center, 88 Olympic-ro 43-gil, Songpa-gu, Seoul 05505, Korea.

• Tel: (822) 3010-5682 • Fax: (822) 476-0090 • E-mail: radhskim@gmail.com

This is an Open Access article distributed under the terms of the Creative Commons Attribution Non-Commercial License (<https://creativecommons.org/licenses/by-nc/4.0>) which permits unrestricted non-commercial use, distribution, and reproduction in any medium, provided the original work is properly cited.

by subsequent therapies. Developing such endpoints will also be crucial for evaluating therapies targeting small subpopulations of patients with tumors based on specific molecular aberrations (1). However, the use of IBSEs is controversial because the association between IBSEs and OS remains unknown in many tumor types. Treatment efficacy can be overestimated when the IBSEs used in a study do not correlate with OS. Therefore, the true relationship of IBSEs to OS should be validated in phase III RCTs (2).

In glioblastoma research, a trial design is particularly challenging because of the rarity of the disease and the heterogeneity related to specific genetic mutations, which are the subject of many studies on targeted therapies. IBSEs, including PFS, 6-month PFS (6moPFS), 12-month PFS (12moPFS), median PFS, and objective response rate (ORR), are gaining popularity as primary or secondary endpoints in phase III RCTs on glioblastomas (3-25), although the current data only support their use in screening for effective drugs in phase II trials on glioblastomas. In addition, glioblastoma is subject to the unique phenomenon of pseudoprogression, which affects response assessment (26, 27). Pseudoprogression in newly diagnosed glioblastoma refers to treatment-associated tumor changes that mimic progressive signs although the tumor actually remains stable or regresses on follow-up. Conversely, the term pseudoresponse refers to the phenomenon in which a tumor appears to respond to a treatment, such as an antiangiogenic agent, although it actually remains stable or progresses. These phenomena may weaken the association between IBSEs and OS.

The quality of efficacy reporting in glioblastoma phase III RCTs using IBSEs is also of major importance. The bias in efficacy reporting when using IBSEs is not negligible and can influence the reader's interpretation of the treatment efficacy, eventually harming medical decision making. To more efficiently validate promising candidate therapies for glioblastoma, we assessed the relationship between IBSEs and OS as primary or secondary endpoints for variable targeted therapies at the phase III trial level (28). Here, we determined the optimized IBSEs in targeted therapies for glioblastoma through a systematic review and meta-analysis of phase III RCTs.

## MATERIALS AND METHODS

### Identification of Eligible Trials

OID-MEDLINE and EMBASE were searched to identify all

published phase III RCTs on newly diagnosed or recurrent glioblastoma. The following search terms were used: ((glioblastoma) OR (GBM)) AND (("overall survival" OR (OS) OR ("progression free survival" OR ("progression-free survival" OR (PFS)) AND (("phase 3" OR ("phase III")))).

Trials evaluating targeted therapies for cell cycle pathways, antiangiogenic therapy, targeted therapies for growth factor receptors and their downstream pathways, or immunotherapy in at least one arm were eligible for inclusion (29). The eligible trials should have a control group receiving a placebo or standard treatment (temozolomide or bevacizumab). The search start date was not predefined, and the cutoff date was December 2017. The search was not limited by sample size, study design, selected endpoints, type of control, line of treatment, or blinding. There were also no limits on the geographic origin of the trial, language of publication, or sponsorship. Meeting abstracts without published original articles were not considered eligible for this study. Trials subsequently reported in full were excluded.

Phase III RCTs involving anaplastic astrocytomas or anaplastic oligodendrogliomas were excluded because of the distinct biological characteristics of these tumors and the different treatment planning for these diseases. Review articles, meta-analyses, systematic reviews, phase I and II trials, nonrandomized trials, observational studies, and case reports were also excluded.

### Data Extraction

A standardized predesigned data extraction form was utilized. The data were independently extracted from each eligible trial by two authors, and included publication year, sample size, newly diagnosed glioblastoma versus recurrent glioblastoma, line of treatment, treatment categorization, response assessment criteria, whether the primary endpoint was defined, and other endpoints. If the primary endpoint was not explicitly reported, the primary endpoint was selected on the basis of the reported endpoints, methods described in the study objectives, statistical analysis, or sample size calculation. The presence of intent-to-treat (ITT) analysis and sponsorship were also assessed. The data retrieved from all trials were crosschecked. In cases of unclear definitions, a third author was consulted for consensus.

The IBSEs included PFS and ORR. For the definition of IBSEs, OS, which is a direct measure of clinical benefit to a patient, was defined as the time from randomization

to death of any cause. PFS was defined as the time from randomization until the first evidence of tumor progression or until death of any cause, whichever comes first. The 6moPFS and 12moPFS are the PFS at 6 and 12 months after randomization, respectively. ORR was defined as the proportion of patients with reduction in tumor burden of a predefined amount. For OS and PFS, the median values, hazard ratios (HRs), confidence intervals (CIs), and *p* values were extracted. The 6moPFS and 12moPFS data were extracted from the articles on the basis of the reported Kaplan-Meier estimates. When unreported, 6moPFS and 12moPFS were estimated from Kaplan-Meier PFS curves using Plot Digitizer 2.6.8 (plotdigitizer.sourceforge.net).

### Statistical Analysis

Data are reported as medians or means. Odds ratios (ORs) and 95% CIs were calculated for 6moPFS, 12moPFS, median PFS, and ORR. Associations between IBSEs and OS were investigated using linear regression weighted by the study sample size for the HR for OS; HR for PFS; and ORs for 6moPFS, 12moPFS, median PFS, and ORR. The strength of a correlation was determined by the standardized  $\beta$  coefficient and defined according to the criteria of Burnand et al. (30). A correlation coefficient of  $> 0.6$  was considered to indicate a strong association; 0.45–0.6, substantial association; 0.3–0.45, minimal association; and 0–0.3, no association. Multiple regression analysis was conducted to address the potential effect on OS of disease entity, a specific target of test treatment, and response assessment

criteria. Multiple subgroup analyses were also conducted according to disease entity, types of targeted therapies (29), and response assessment criteria (Macdonald criteria versus response assessment in neuro-oncology [RANO] criteria). For the presence of ITT analysis and sponsorship, trends over time were assessed using logistic regression for binary outcomes by comparing early publication years (2000–2011) and late publication years (2012–2017).

All statistical tests were two sided, and statistical significance was defined as  $p < 0.05$ . No corrections were made for multiple testing.

### RESULTS

The search identified 204 articles. Full-text reviews of 28 potentially eligible articles were performed, and 5 articles were excluded for reporting subsets of other clinical trials ( $n = 3$ ) (31–33) and having no surrogate endpoint ( $n = 2$ ) (34, 35). Finally, 23 phase III RCTs published between 2000 and 2017 were identified (Fig. 1) (3–25). The eligible trials included 8387 patients, and there was no overlap in these patients included in 23 phase III RCTs (Tables 1, 2).

Eighteen trials (78%) included newly diagnosed glioblastoma (4, 5, 7–19, 21–23) and five trials included recurrent glioblastoma (3, 6, 20, 24, 25). Thirteen trials (57%) evaluated targeted therapies for cell cycle pathways (4, 8, 9, 11–16, 18–20, 23), whereas the other trials evaluated antiangiogenic therapy ( $n = 5$ ) (3, 5, 7, 17, 24), targeted therapies for growth factor receptors and

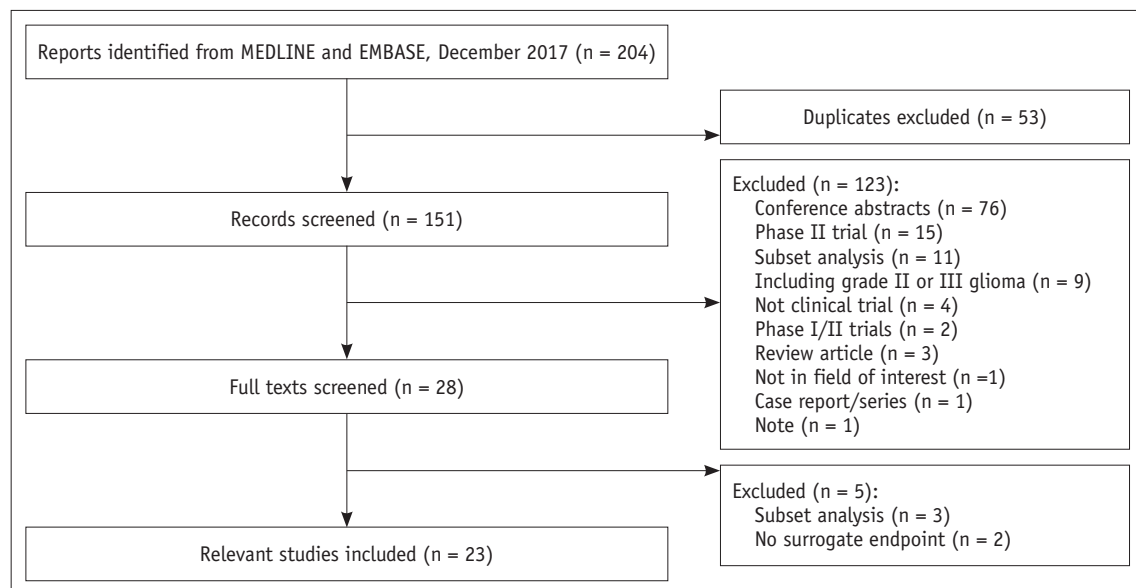


Fig. 1. Study flow diagram.

**Table 1. Characteristics of Included Trials**

Source	Publication Year	Tumor Type	Drug	Drug Categorization	Study Design	No. of Patients	Response Assessment	Primary Endpoint	Surrogate Endpoint	Clinical Endpoint
Kong et al. (10)	2017	GBM	CIK cell immunotherapy	Immunotherapy	Phase 3 RCT	180	Macdonald criteria	PFS	PFS, ORR	OS
Perry et al. (13)	2017	GBM	Temozolomide plus short-course RT	Targeted therapies for cell cycle pathways	Phase 3 RCT	562	RANO	OS	PFS	OS
Weller et al. (21)	2017	GBM	Rindopepimut	Targeted therapies for growth factor receptors and their downstream pathways	Phase 3 RCT	405	RANO	OS	PFS, ORR	OS
Wick et al. (24)	2017	rGBM	Lomustine plus bevacizumab	Antiangiogenic therapy	Phase 3 RCT	437	RANO	OS	PFS	OS
Blumenthal et al. (4)	2015	GBM	O6-BG plus BCNU plus RT	Targeted therapies for cell cycle pathways	Phase 3 RCT	179	Macdonald criteria	OS	PFS	OS
Roa et al. (16)	2015	GBM	Short course RT	Targeted therapies for cell cycle pathways	Phase 3 RCT	93	Unclear	Unclear	PFS	OS
Stupp et al. (19)	2015	GBM	TTFIELDS	Targeted therapies for cell cycle pathways	Phase 3 RCT	695	Macdonald criteria	PFS	PFS	OS
Westphal et al. (22)	2015	GBM	Nimotuzumab	Targeted therapies for growth factor receptors and their downstream pathways	Phase 3 RCT	142	Macdonald criteria	PFS, 12moPFS	PFS, 12moPFS	OS
Chinot et al. (5)	2014	GBM	CCRT plus bevacizumab	Antiangiogenic therapy	Phase 3 RCT	921	Adapted Macdonald response criteria	PFS, OS	PFS	OS
Gilbert et al. (7)	2014	GBM	CCRT plus bevacizumab	Antiangiogenic therapy	Phase 3 RCT	621	Macdonald criteria	PFS, OS	PFS	OS
Stupp et al. (17)	2014	GBM	Cilengitide	Antiangiogenic therapy	Phase 3 RCT	545	Macdonald criteria	OS	PFS	OS
Batchelor et al. (3)	2013	rGBM	Cediranib	Antiangiogenic therapy	Phase 3 RCT	196	RANO	PFS	PFS, ORR	OS
Gilbert et al. (8)	2013	GBM	Dose-dense temozolomide	Targeted therapies for cell cycle pathways	Phase 3 RCT	833	Macdonald criteria	OS	PFS	OS
Westphal et al. (23)	2013	GBM	Vaccination	Targeted therapies for cell cycle pathways	Phase 3 RCT	236	RANO	Time to death or re-intervention	Time to death or re-intervention	OS
Malmström et al. (12)	2012	GBM	Hypofractionated RT	Targeted therapies for cell cycle pathways	Phase 3 RCT	193	Unclear	OS	12moOS	OS
Stupp et al. (20)	2012	rGBM	NovoTTF-100A	Targeted therapies for cell cycle pathways	Phase 3 RCT	237	Macdonald criteria	OS	PFS, 6moPFS, 12moOS, ORR	OS
Kim et al. (9)	2011	GBM	ACNU-CDDP	Targeted therapies for cell cycle pathways	Phase 3 RCT	82	Unclear	OS	PFS	OS

**Table 1. Characteristics of Included Trials (Continued)**

Source	Publication Year	Tumor Type	Drug	Drug Categorization	Study Design	No. of Patients	Response Assessment	Primary Endpoint	Surrogate Endpoint	Clinical Endpoint
Dresemann et al. (6)	2010	rGBM	Imatinib	Targeted therapies for growth factor receptors and their downstream pathways	Phase 3 RCT	240	Macdonald criteria	PFS	PFS, 6moPFS, 12moPFS, ORR	OS
Wick et al. (25)	2010	rGBM	Enzastaurin	Targeted therapies for growth factor receptors and their downstream pathways	Phase 3 RCT	266	Modified Levin's criteria	PFS	PFS, 6moPFS	OS
Stupp et al. (18)	2005	GBM	CCRT	Targeted therapies for cell cycle pathways	Phase 3 RCT	573	Macdonald criteria	OS	PFS	OS
Prados et al. (14)	2001	GBM	DFMO	Targeted therapies for cell cycle pathways	Phase 3 RCT	231	Unclear	PFS, OS	PFS	OS
Levin et al. (11)	2000	GBM	DFMO-PCV	Targeted therapies for cell cycle pathways	Phase 3 RCT	272	Macdonald criteria	PFS, OS	PFS	OS
Rainov (15)	2000	GBM	Gene therapy	Targeted therapies for cell cycle pathways	Phase 3 RCT	248	Unclear	Unclear	Time to progression	OS

ACNU-CDDP = nimustine plus cisplatin, BCNU = carmustine, CCRT = concurrent chemoradiotherapy, CIK = cytokine-induced killer, DFMO = difluoromethylornithine, GBM = glioblastoma, ORR = objective response rate, OS = overall survival, O6-BG = O6-benzylguanine, PCV = procarbazine, lomustine, and vincristine, PFS = progression-free survival, RANO = response assessment in neuro-oncology, RCT = randomized controlled trial, rGBM = recurrent GBM, RT = radiation therapy, TTFIELDS = tumor-treating fields, 6moPFS = 6-month PFS, 12moOS = 12-month OS, 12moPFS = 12-month PFS

their downstream pathways (n = 4) (6, 21, 22, 25), or immunotherapy (n = 1) (10). Twelve trials (52%) used the Macdonald criteria (36) as response assessment criteria (4-8, 10, 11, 17-20, 22), five trials used the RANO (37) criteria (3, 13, 21, 23, 24), one trial used modified Levin's criteria (25), and five trials did not report the exact response assessment criteria (9, 12, 14-16). The primary and secondary endpoints are described in Supplementary Materials.

Nineteen trials (83%) included ITT analysis (3-6, 8-10, 12, 13, 15-21, 23-25) and one trial used a per-protocol analysis (22), whereas three trials did not explicitly report the analysis (7, 11, 14). There was no statistical difference in the use of ITT-based analysis over time (OR, 0.935 [95% CI, 0.728-1.200]; *p* = 0.598). Sponsorship was reported in 21 trials (91%), among which 11 (48%) were sponsored by industry (3, 5, 8, 10, 17, 19-23, 25), 6 (26%) were sponsored by a cooperative group or an institution (4, 7, 9, 11, 14, 16), and 4 received combined funding (12, 13, 18, 24). Compared with trials published between 2000 and 2011, those published between 2012 and 2017 were more

likely to be supported by industry (29% versus 81%; OR, 10.833 [95% CI, 1.374-85.440]; *p* = 0.024).

#### Association between IBSEs and OS

Our analysis of the use of surrogate endpoints only included those trials reporting the HR for OS, and either the HR for PFS or data allowing the calculation of the OR for 6moPFS, 12moPFS, median PFS, or ORR. Eighteen HR pairs for OS and PFS were available from 18 trials with 7729 patients (3-8, 10, 11, 13, 14, 17-22, 24, 25). Binary proportions for 6moPFS were reported in 12 trials and estimated from Kaplan-Meier PFS curves in 5 trials, whereas 12moPFS values were reported in 14 trials and estimated from Kaplan-Meier PFS curves in 3 trials. Binary proportions of median PFS were reported in 18 trials; however, ORR was reported in only 5 trials.

The standardized  $\beta$  coefficients for the weighted linear regression of OS with IBSEs are listed in Table 3. The standardized  $\beta$  coefficient (R) for the relationship between the HR for OS and the HR for PFS was 0.719, indicating a

**Table 2. Study Characteristics**

Study Characteristics	No. of Trials (%)
Overall	23 (100)
Inclusion criteria for tumor type	
Newly diagnosed GBM	18 (78)
Recurrent GBM	5 (22)
Treatment categorization	
Targeted therapies for cell cycle pathways	13 (57)
Antiangiogenic therapy	5 (22)
Targeted therapies for growth factor receptors and their downstream pathways	4 (17)
Immunotherapy	1 (4)
Response assessment criteria	
Macdonald criteria	12 (52)
RANO criteria	5 (22)
Modified Levin's criteria	1 (4)
Not specified	5 (22)
Primary endpoint	
OS	10 (43)
PFS	5 (22)
OS and PFS	4 (17)
12moPFS and PFS	1 (4)
Time to death or re-intervention	1 (4)
Not specified	2 (9)
Intention to treat analysis included	
Yes	19 (83)
No	1 (4)
Not specified	3 (13)
Sponsorship	
Industry	11 (48)
Cooperative/institution	6 (26)
Combined industry/cooperative	4 (17)
Not specified	2 (9)

**Table 3. Surrogacy of Imaging-Based Endpoints with OS**

Surrogate Endpoint	Correlation Coefficient with OS
HR for PFS	0.719
OR for 6moPFS	0.647
OR for 12moPFS	0.638
OR for median PFS	0.341

HR = hazard ratio, OR = odds ratio

strong correlation between OS and PFS (Fig. 2). OS also showed a strong correlation with 6moPFS and 12moPFS; however, there was only a minimal correlation between OS and median PFS and there was no correlation between OS and ORR. The correlation between the HR for OS and the HR for PFS did not seem to be influenced by disease entity ( $R = -0.222$ ,  $p = 0.282$ ), types of targeted therapies ( $R = -0.160$ ,  $p = 0.458$ ), or response assessment criteria ( $R = -0.172$ ,  $p = 0.404$ ).

### Optimal Choice of IBSEs Depending on Disease Entity, Types of Targeted Therapies, and Response Assessment Criteria

In multiple subgroup analyses according to disease entity, a specific target of test treatment, and response assessment criteria, consistent strong correlations between OS and PFS were observed ( $R = 0.612$ – $0.975$ ) (Figs. 2, 3). The subgroup analysis according to disease entity revealed strong correlations between OS and 6moPFS and between OS and 12moPFS, in both newly diagnosed and recurrent glioblastoma (Table 4). However, there was only a minimal correlation between OS and median PFS in both patient groups. In recurrent glioblastoma, 12moPFS showed the highest correlation with OS ( $R = 0.963$ ).

Targeted therapies for cell cycle pathways showed strong correlations between OS and 6moPFS, 12moPFS, and median PFS. PFS showed the highest correlation with OS ( $R = 0.913$ ) (Fig. 2). In antiangiogenic therapy, 12moPFS showed the highest correlation with OS ( $R = 0.821$ ). Targeted therapies for growth factor receptors and their downstream pathways showed strong correlations between OS and 6moPFS and between OS and median PFS, whereas there was only a minimal correlation between OS and 12moPFS. Among them, PFS showed the highest correlation with OS ( $R = 0.962$ ).

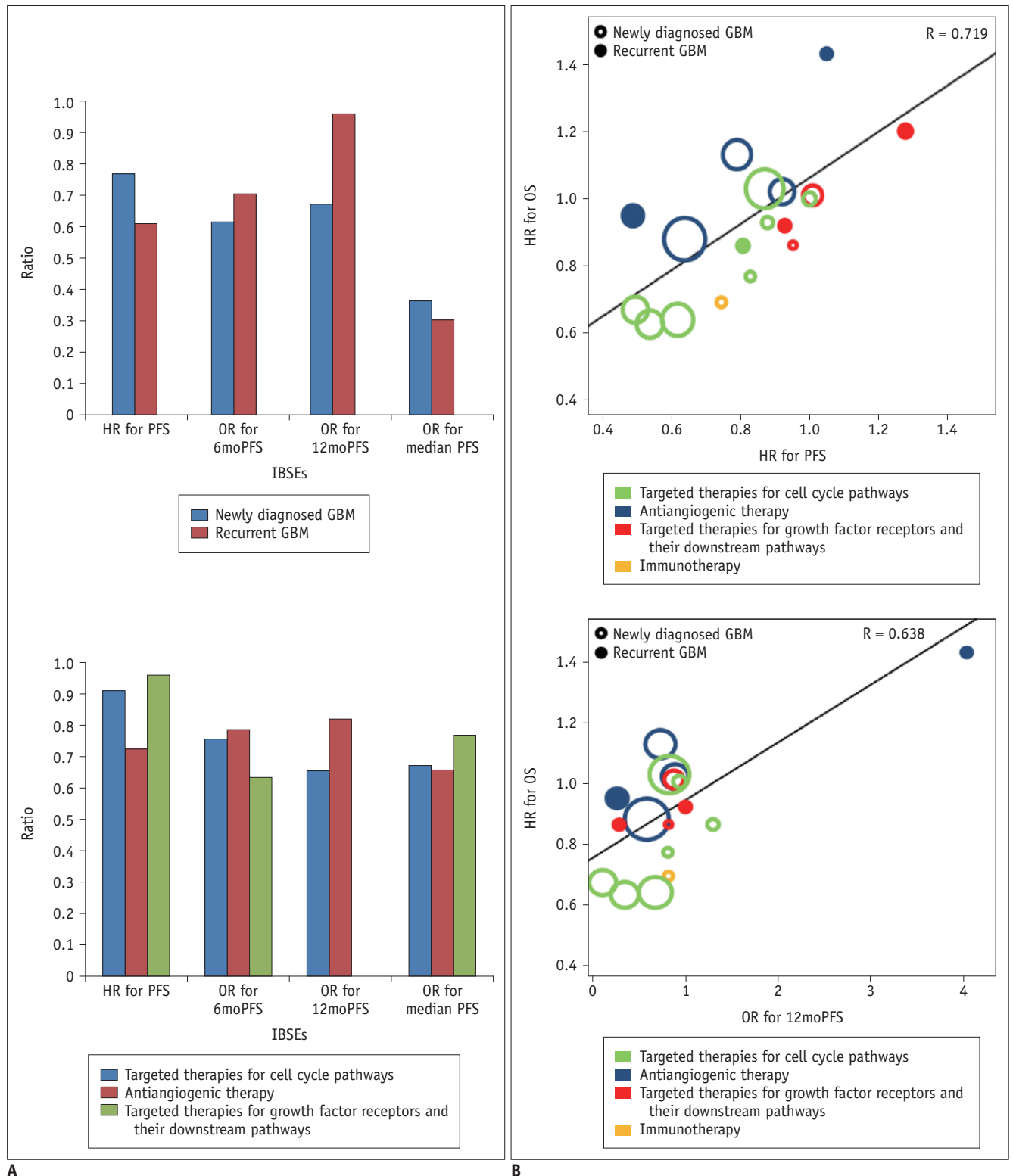
The RANO criteria showed higher standardized  $\beta$  coefficients between OS and 6moPFS, 12moPFS, and median PFS than the Macdonald criteria (Fig. 3). Both 6moPFS and 12moPFS showed a strong correlation with OS ( $R = 0.961$  and  $0.885$ , respectively).

### Quality of Reporting and Interpretation of Results

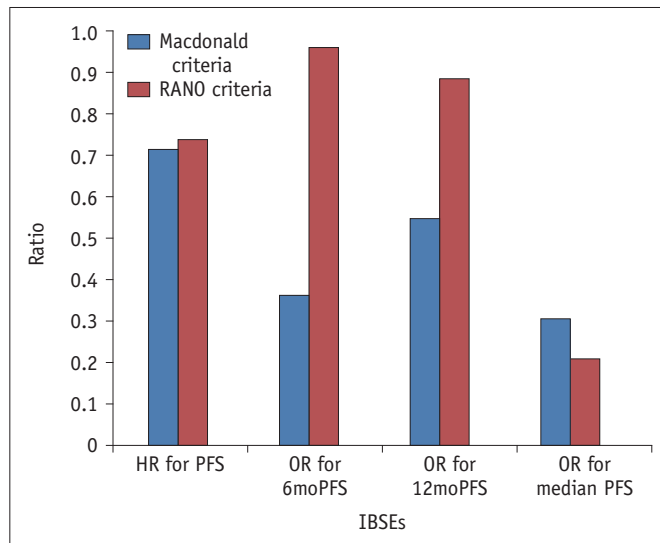
Eight trials reported positive results (5, 7, 10, 12, 13, 18, 19, 23). Among them, four trials used PFS as the primary endpoint (5, 7, 10, 19). Four trials were supported by industry (5, 10, 19, 23).

## DISCUSSION

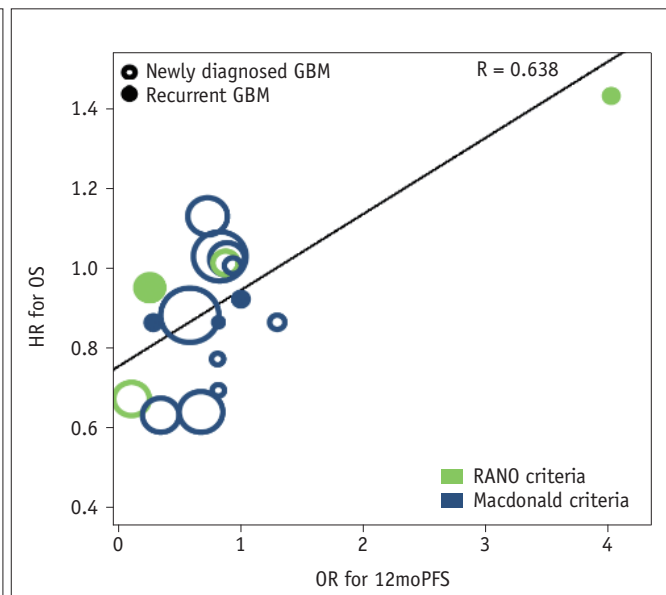
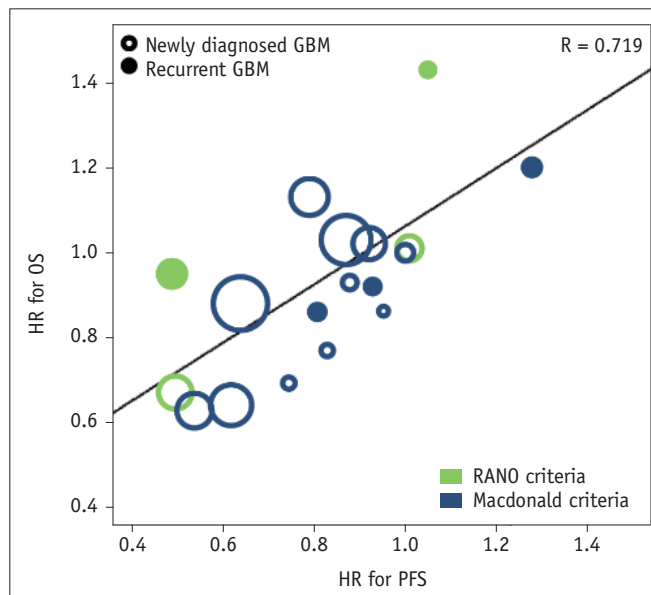
Glioblastoma is a rare tumor with heterogeneous genetic and epigenetic profiles, and with variable responses to systemic treatments. The rarity of glioblastoma is often considered a major barrier in recruiting patients to phase III RCTs, and a justification for enrolling a heterogeneous patient population with respect to genetic and epigenetic profiles. This leads to reduced statistical power in the determination of treatment benefits. In view of the difficulties in performing large phase III RCTs on



**Fig. 2. Correlation of PFS with OS according to disease entity and types of targeted treatment.**  
**A.** Bar charts show correlation coefficients according to disease entity and types of targeted treatment. **B.** Plots show correlation of HR for PFS with HR for OS and that of OR for 12moPFS and HR for OS according to disease entity and types of targeted treatment. GBM = glioblastoma, HR = hazard ratio, IBSEs = image-based surrogate endpoints, OR = odds ratio, OS = overall survival, PFS = progression-free survival, 6moPFS = 6-month PFS, 12moPFS = 12-month PFS



A



B

**Fig. 3. Correlation of PFS with OS according to disease entity and response assessment criteria.**

**A.** Bar chart shows correlation coefficients according to response assessment criteria. **B.** Plots show correlation of HR for PFS with HR for OS and that of OR for 12moPFS and HR for OS according to disease entity and response assessment criteria. RANO = response assessment in neuro-oncology

glioblastoma, collecting currently available phase III RCTs on glioblastoma is important to allow research into drug activity specific to genetic mutations or epigenetic profiles.

Overall, the quality of reporting of the included trials was high. We found high proportions of clearly defined primary endpoints (91%) and ITT analyses (83%) in phase III RCTs on glioblastoma. OS, which is considered the most definitive endpoint, was used as the primary endpoint in 43% of the trials, with PFS also being used in 43%. The first phase III RCT on glioblastoma was published in the 2000, and 20

(87%) phase III RCTs were published after 2010. We believe that this may have influenced the quality of reporting compared with other studies (38). We also found that trials published between 2012 and 2017 were more likely to be supported by industry than trials published between 2000 and 2011. This is probably inevitable owing to the high costs of developing and accessing new anticancer agents in clinical trials. Similar increases in the number of sponsored clinical trials on solid tumors have been reported (38, 39).

To validate surrogate endpoints at a trial level, we



**Table 4. Correlation of Imaging-Based Endpoints with OS according to Subgroup Analyses**

Surrogate Endpoint	Correlation Coefficient with OS
<b>Newly diagnosed GBM</b>	
HR for PFS	0.771
OR for 6moPFS	0.617
OR for 12moPFS	0.675
OR for median PFS	0.366
<b>Recurrent GBM</b>	
HR for PFS	0.612
OR for 6moPFS	0.707
OR for 12moPFS	0.963
OR for median PFS	0.305
<b>Targeted therapies for cell cycle pathways</b>	
HR for PFS	0.913
OR for 6moPFS	0.759
OR for 12moPFS	0.658
OR for median PFS	0.673
<b>Antiangiogenic therapy</b>	
HR for PFS	0.726
OR for 6moPFS	0.789
OR for 12moPFS	0.821
OR for median PFS	0.660
<b>Targeted therapies for growth factor receptors and their downstream pathways</b>	
HR for PFS	0.962
OR for 6moPFS	0.636
OR for 12moPFS	NA*
OR for median PFS	0.772
<b>Macdonald criteria</b>	
HR for PFS	0.715
OR for 6moPFS	0.362
OR for 12moPFS	0.548
OR for median PFS	0.307
<b>RANO criteria</b>	
HR for PFS	0.740
OR for 6moPFS	0.961
OR for 12moPFS	0.885
OR for median PFS	0.210

\*NA due to small number of studies. NA = not available

evaluated the correlation coefficient between the treatment effects determined by PFS and OS (28). The correlation coefficient was close to 1, indicating a strong correlation between treatment effects determined by PFS and treatment effects determined by OS at the trial level. Trials in other tumor types have shown variable degrees of correlation between PFS and OS, ranging from strong correlations in soft tissue sarcoma (38) and small-cell lung cancer (40) to

poor correlation in metastatic breast cancer (41). However, these studies included only a small number of trials (10-12). For a successful validation of trial-level surrogate endpoints, the effective sample size (number of trials) should be sufficiently large to permit a reliable estimate of the correlation coefficient between the estimated treatment effects of the surrogate endpoints and the clinical endpoints (28). We included 18 trials reporting HR pairs for PFS and OS, and observed a strong correlation between PFS and OS with a high correlation coefficient of 0.719, which is consistent with that reported in a previous meta-analysis of phase II trials (42). Moreover, the correlation between PFS and OS did not seem to be influenced by disease entity, a specific target of test treatment, or response assessment criteria. For validation of trial-level surrogate endpoints, the HR incorporates all data from all patients and is considered to be the most appropriate measure for time-to-event outcomes (28). Therefore, these results support the use of PFS as a primary endpoint in phase III RCTs on glioblastoma.

We also observed strong correlations between 6moPFS and OS ( $R = 0.647$ ) and between 12moPFS and OS ( $R = 0.638$ ). However, only one trial included 12moPFS as a primary endpoint (22), and no trial included 6moPFS as a primary endpoint. A previous meta-analysis of phase II trials also showed 6moPFS to be a strong predictor of survival for recurrent high-grade gliomas (43). However, we observed only a minimal correlation between OS and median PFS. Usually, time-to-event outcomes are evaluated at a single time point (6moPFS or 12moPFS), as the median value of time-to-event outcomes (median PFS) is subject to the following problems: 1) it is likely to be affected by the choice of time point; 2) it does not consider censoring; 3) it has the possibility to be misleading if survival curves are erratic; and 4) it may not correspond well with the HR of PFS (44). There have been only five trials reporting ORR, and we found no correlation between OS and ORR. Further large-scale analyses will be needed to determine the potential correlation between ORR and OS, preferably using the RANO criteria (43). Therefore, we recommend using 6moPFS and 12moPFS as surrogate endpoints in glioblastoma trials; however, caution must be taken in using median PFS and ORR as surrogate endpoints.

The use of PFS as a surrogate endpoint offers several advantages. First, the period of time without progression is usually clinically meaningful and generally reflects treatment effects. Second, PFS is not influenced by subsequent

treatments. Third, studies using PFS as a primary endpoint are usually completed in a shorter time than studies using OS as a primary endpoint. Last, but not least, studies using PFS may require a smaller sample size, as the treatment effect is often greater on PFS than on OS (45).

Recent understanding of the molecular pathways that induce glioblastoma development has led to the development of various investigational treatments specifically targeting tumor cells and the tumor microenvironment (29). Developing surrogate endpoints will be crucial for evaluating therapies targeting small subpopulations of patients with glioblastoma based on specific molecular aberrations. Random assignment in such small populations may not be feasible within the biomarker-defined group. Therefore, appropriate validation and selection of such surrogate endpoints according to a specific target of test treatment is essential to achieve success in clinical trials. Furthermore, the decision to move from early signs of efficacy based on surrogate endpoints to late-stage randomized trials is crucial because there is a high potential of overestimating efficacy by using surrogate endpoints that do not correlate with OS or through selection bias and population drift by comparison with historical controls.

In our subgroup analysis according to types of targeted therapies, PFS showed the highest correlations with OS in trials using targeted therapies for cell cycle pathways ( $R = 0.913$ ) and targeted therapies for growth factor receptors and their downstream pathways ( $R = 0.962$ ). In antiangiogenic therapy, 12moPFS showed the highest correlation with OS ( $R = 0.821$ ). Therefore, we recommend using PFS as a surrogate endpoint in trials with targeted therapies for cell cycle pathways and targeted therapies for growth factor receptors and their downstream pathways, and using 12moPFS in trials with antiangiogenic therapy.

In the subgroup analysis according to disease entity, OS showed consistent strong correlations with PFS, 6moPFS, and 12moPFS. Particularly, PFS showed the highest correlation with OS ( $R = 0.771$ ) in newly diagnosed glioblastoma, whereas 12moPFS showed the highest correlation with OS ( $R = 0.963$ ) in recurrent glioblastoma. In the subgroup analysis according to response assessment criteria, trials using the RANO criteria showed higher correlation coefficients between OS and PFS, 6moPFS, and 12moPFS than trials using the Macdonald criteria. Compared with the Macdonald criteria (36), the RANO criteria included the concepts of pseudoprogression and pseudoresponse

(27, 37). After the RANO criteria were published in 2010, trials published from 2013 started to use these criteria. We strongly recommend using 6moPFS and 12moPFS as surrogate endpoints in glioblastoma trials using the RANO criteria.

Our study had several limitations. First, in an effort to overcome the paucity of phase III RCTs on glioblastoma, we conducted an exhaustive systematic search and included all published phase III RCTs on glioblastoma, which covered a variety of different treatments and thereby included data from trials with variable sample sizes. This could have potentially increased the level of bias, although our statistical analysis was weighted for sample size. Second, the number of trials included in each subgroup, particularly for each specific target of test treatment, was low. Therefore, the results of the subgroup analyses should be interpreted with caution, and further large studies are needed.

In conclusion, the types of targeted therapies and response assessment criteria should be carefully considered for the optimal choice of IBSEs in clinical studies on glioblastoma. PFS is an optimized IBSE in targeted therapies for glioblastoma; however, 12moPFS is optimal in antiangiogenic therapy.

## Supplementary Materials

The Data Supplement is available with this article at <https://doi.org/10.3348/kjr.2019.0839>.

## Conflicts of Interest

The authors have no potential conflicts of interest to disclose.

## ORCID iDs

Ho Sung Kim

<https://orcid.org/0000-0002-9477-7421>

Chong Hyun Suh

<https://orcid.org/0000-0002-4737-0530>

Seung Chai Jung

<https://orcid.org/0000-0001-5559-7973>

Choong Gon Choi

<https://orcid.org/0000-0002-2251-1915>

Sang Joon Kim

<https://orcid.org/0000-0001-7070-7333>

Kyung Won Kim

<https://orcid.org/0000-0002-1532-5970>

## REFERENCES

- Barchana M, Margaliot M, Liphshitz I. Changes in brain glioma incidence and laterality correlates with use of mobile phones—a nationwide population based study in Israel. *Asian Pac J Cancer Prev* 2012;13:5857-5863
- Martell RE, Sermer D, Getz K, Kaitin KI. Oncology drug development and approval of systemic anticancer therapy by the U.S. Food and Drug Administration. *Oncologist* 2013;18:104-111
- Batchelor TT, Mulholland P, Neyns B, Nabors LB, Campone M, Wick A, et al. Phase III randomized trial comparing the efficacy of cediranib as monotherapy, and in combination with lomustine, versus lomustine alone in patients with recurrent glioblastoma. *J Clin Oncol* 2013;31:3212-3218
- Blumenthal DT, Rankin C, Stelzer KJ, Spence AM, Sloan AE, Moore DF Jr, et al. A Phase III study of radiation therapy (RT) and O<sup>6</sup>-benzylguanine + BCNU versus RT and BCNU alone and methylation status in newly diagnosed glioblastoma and gliosarcoma: Southwest Oncology Group (SWOG) study S0001. *Int J Clin Oncol* 2015;20:650-658
- Chinot OL, Wick W, Mason W, Henriksson R, Saran F, Nishikawa R, et al. Bevacizumab plus radiotherapy-temozolomide for newly diagnosed glioblastoma. *N Engl J Med* 2014;370:709-722
- Dresemann G, Weller M, Rosenthal MA, Wedding U, Wagner W, Engel E, et al. Imatinib in combination with hydroxyurea versus hydroxyurea alone as oral therapy in patients with progressive pretreated glioblastoma resistant to standard dose temozolomide. *J Neurooncol* 2010;96:393-402
- Gilbert MR, Dignam JJ, Armstrong TS, Wefel JS, Blumenthal DT, Vogelbaum MA, et al. A randomized trial of bevacizumab for newly diagnosed glioblastoma. *N Engl J Med* 2014;370:699-708
- Gilbert MR, Wang M, Aldape KD, Stupp R, Hegi ME, Jaeckle KA, et al. Dose-dense temozolomide for newly diagnosed glioblastoma: a randomized phase III clinical trial. *J Clin Oncol* 2013;31:4085-4091
- Kim IH, Park CK, Heo DS, Kim CY, Rhee CH, Nam DH, et al. Radiotherapy followed by adjuvant temozolomide with or without neoadjuvant ACNU-CDDP chemotherapy in newly diagnosed glioblastomas: a prospective randomized controlled multicenter phase III trial. *J Neurooncol* 2011;103:595-602
- Kong DS, Nam DH, Kang SH, Lee JW, Chang JH, Kim JH, et al. Phase III randomized trial of autologous cytokine-induced killer cell immunotherapy for newly diagnosed glioblastoma in Korea. *Oncotarget* 2017;8:7003-7013
- Levin VA, Uhm JH, Jaeckle KA, Choucair A, Flynn PJ, Yung WKA, et al. Phase III randomized study of postradiotherapy chemotherapy with alpha-difluoromethylornithine-procarbazine, N-(2-chloroethyl)-N'-cyclohexyl-N-nitrosurea, vincristine (DFMO-PCV) versus PCV for glioblastoma multiforme. *Clin Cancer Res* 2000;6:3878-3884
- Malmström A, Grønberg BH, Marosi C, Stupp R, Frappaz D, Schultz H, et al. Temozolomide versus standard 6-week radiotherapy versus hypofractionated radiotherapy in patients older than 60 years with glioblastoma: the Nordic randomised, phase 3 trial. *Lancet Oncol* 2012;13:916-926
- Perry JR, Laperriere N, O'Callaghan CJ, Brandes AA, Menten J, Phillips C, et al. Short-course radiation plus temozolomide in elderly patients with glioblastoma. *N Engl J Med* 2017;376:1027-1037
- Prados MD, Wara WM, Sneed PK, McDermott M, Chang SM, Rabbitt J, et al. Phase III trial of accelerated hyperfractionation with or without difluoromethylornithine (DFMO) versus standard fractionated radiotherapy with or without DFMO for newly diagnosed patients with glioblastoma multiforme. *Int J Radiat Oncol Biol Phys* 2001;49:71-77
- Rainov NG. A phase III clinical evaluation of herpes simplex virus type 1 thymidine kinase and ganciclovir gene therapy as an adjuvant to surgical resection and radiation in adults with previously untreated glioblastoma multiforme. *Hum Gene Ther* 2000;11:2389-2401
- Roa W, Kepka L, Kumar N, Sinaika V, Matiello J, Lomidze D, et al. International Atomic Energy Agency randomized phase III study of radiation therapy in elderly and/or frail patients with newly diagnosed glioblastoma multiforme. *J Clin Oncol* 2015;33:4145-4150
- Stupp R, Hegi ME, Gorlia T, Erridge SC, Perry J, Hong YK, et al. Cilengitide combined with standard treatment for patients with newly diagnosed glioblastoma with methylated MGMT promoter (CENTRIC EORTC 26071-22072 study): a multicentre, randomised, open-label, phase 3 trial. *Lancet Oncol* 2014;15:1100-1108
- Stupp R, Mason WP, van den Bent MJ, Weller M, Fisher B, Taphoorn MJ, et al. Radiotherapy plus concomitant and adjuvant temozolomide for glioblastoma. *N Engl J Med* 2005;352:987-996
- Stupp R, Taillibert S, Kanner AA, Kesari S, Steinberg DM, Toms SA, et al. Maintenance therapy with tumor-treating fields plus temozolomide vs temozolomide alone for glioblastoma: a randomized clinical trial. *JAMA* 2015;314:2535-2543
- Stupp R, Wong ET, Kanner AA, Steinberg D, Engelhard H, Heidecke V, et al. NovoTTF-100A versus physician's choice chemotherapy in recurrent glioblastoma: a randomised phase III trial of a novel treatment modality. *Eur J Cancer* 2012;48:2192-2202
- Weller M, Butowski N, Tran DD, Recht LD, Lim M, Hirte H, et al. Rindopepimut with temozolomide for patients with newly diagnosed, EGFRvIII-expressing glioblastoma (ACT IV): a randomised, double-blind, international phase 3 trial. *Lancet Oncol* 2017;18:1373-1385
- Westphal M, Heese O, Steinbach JP, Schnell O, Schackert G, Mehdorn M, et al. A randomised, open label phase III trial with nimotuzumab, an anti-epidermal growth factor receptor monoclonal antibody in the treatment of newly diagnosed adult glioblastoma. *Eur J Cancer* 2015;51:522-532
- Westphal M, Ylä-Herttua S, Martin J, Warnke P, Menei P,

- Eckland D, et al. Adenovirus-mediated gene therapy with sitimagene ceradenovec followed by intravenous ganciclovir for patients with operable high-grade glioma (ASPECT): a randomised, open-label, phase 3 trial. *Lancet Oncol* 2013;14:823-833
24. Wick W, Gorlia T, Bendszus M, Taphoorn M, Sahm F, Harting I, et al. Lomustine and bevacizumab in progressive glioblastoma. *N Engl J Med* 2017;377:1954-1963
  25. Wick W, Puduvalli VK, Chamberlain MC, van den Bent MJ, Carpentier AF, Cher LM, et al. Phase III study of enzastaurin compared with lomustine in the treatment of recurrent intracranial glioblastoma. *J Clin Oncol* 2010;28:1168-1174
  26. Brandsma D, van den Bent MJ. Pseudoprogression and pseudoresponse in the treatment of gliomas. *Curr Opin Neurol* 2009;22:633-638
  27. Wen PY, Chang SM, Van den Bent MJ, Vogelbaum MA, Macdonald DR, Lee EQ. Response assessment in neuro-oncology clinical trials. *J Clin Oncol* 2017;35:2439-2449
  28. Zhao F. Surrogate end points and their validation in oncology clinical trials. *J Clin Oncol* 2016;34:1436-1437
  29. Touat M, Idbah A, Sanson M, Ligon KL. Glioblastoma targeted therapy: updated approaches from recent biological insights. *Ann Oncol* 2017;28:1457-1472
  30. Burnand B, Kernan WN, Feinstein AR. Indexes and boundaries for "quantitative significance" in statistical decisions. *J Clin Epidemiol* 1990;43:1273-1284
  31. Armstrong TS, Wefel JS, Wang M, Gilbert MR, Won M, Bottomley A, et al. Net clinical benefit analysis of radiation therapy oncology group 0525: a phase III trial comparing conventional adjuvant temozolomide with dose-intensive temozolomide in patients with newly diagnosed glioblastoma. *J Clin Oncol* 2013;31:4076-4084
  32. Mirimanoff RO, Gorlia T, Mason W, Van den Bent MJ, Kortmann RD, Fisher B, et al. Radiotherapy and temozolomide for newly diagnosed glioblastoma: recursive partitioning analysis of the EORTC 26981/22981-NCIC CE3 phase III randomized trial. *J Clin Oncol* 2006;24:2563-2569
  33. Taphoorn MJ, Henriksson R, Bottomley A, Cloughesy T, Wick W, Mason WP, et al. Health-related quality of life in a randomized phase III study of bevacizumab, temozolomide, and radiotherapy in newly diagnosed glioblastoma. *J Clin Oncol* 2015;33:2166-2175
  34. Kunwar S, Chang S, Westphal M, Vogelbaum M, Sampson J, Barnett G, et al. Phase III randomized trial of CED of IL13-PE38QQR vs Gliadel wafers for recurrent glioblastoma. *Neuro Oncol* 2010;12:871-881
  35. Stupp R, Hegi ME, Mason WP, van den Bent MJ, Taphoorn MJ, Janzer RC, et al. Effects of radiotherapy with concomitant and adjuvant temozolomide versus radiotherapy alone on survival in glioblastoma in a randomised phase III study: 5-year analysis of the EORTC-NCIC trial. *Lancet Oncol* 2009;10:459-466
  36. Macdonald DR, Cascino TL, Schold SC Jr, Cairncross JG. Response criteria for phase II studies of supratentorial malignant glioma. *J Clin Oncol* 1990;8:1277-1280
  37. Wen PY, Macdonald DR, Reardon DA, Cloughesy TF, Sorensen AG, Galanis E, et al. Updated response assessment criteria for high-grade gliomas: response assessment in neuro-oncology working group. *J Clin Oncol* 2010;28:1963-1972
  38. Zer A, Prince RM, Amir E, Abdul Razak A. Evolution of randomized trials in advanced/metastatic soft tissue sarcoma: end point selection, surrogacy, and quality of reporting. *J Clin Oncol* 2016;34:1469-1475
  39. Booth CM, Cescon DW, Wang L, Tannock IF, Krzyzanowska MK. Evolution of the randomized controlled trial in oncology over three decades. *J Clin Oncol* 2008;26:5458-5464
  40. Foster NR, Renfro LA, Schild SE, Redman MW, Wang XF, Dahlberg SE, et al. Multitrial evaluation of progression-free survival as a surrogate end point for overall survival in first-line extensive-stage small-cell lung cancer. *J Thorac Oncol* 2015;10:1099-1106
  41. Burzykowski T, Buyse M, Piccart-Gebhart MJ, Sledge G, Carmichael J, Lück HJ, et al. Evaluation of tumor response, disease control, progression-free survival, and time to progression as potential surrogate end points in metastatic breast cancer. *J Clin Oncol* 2008;26:1987-1992
  42. Ballman KV, Buckner JC, Brown PD, Giannini C, Flynn PJ, LaPlant BR, et al. The relationship between six-month progression-free survival and 12-month overall survival end points for phase II trials in patients with glioblastoma multiforme. *Neuro Oncol* 2007;9:29-38
  43. Lamborn KR, Yung WK, Chang SM, Wen PY, Cloughesy TF, DeAngelis LM, et al. Progression-free survival: an important end point in evaluating therapy for recurrent high-grade gliomas. *Neuro Oncol* 2008;10:162-170
  44. Michiels S, Piedbois P, Burdett S, Syz N, Stewart L, Pignon JP. Meta-analysis when only the median survival times are known: a comparison with individual patient data results. *Int J Technol Assess Health Care* 2005;21:119-125
  45. Reardon DA, Galanis E, DeGroot JF, Cloughesy TF, Wefel JS, Lamborn KR, et al. Clinical trial end points for high-grade glioma: the evolving landscape. *Neuro Oncol* 2011;13:353-361