



# Application of Three Dimensional Printed Models in Congenital Heart Surgery: Surgeon's Perspective

선천성 심기형의 수술에 있어서 삼차원 프린팅 모델의 적용: 심장외과 의사의 관점

Hyungtae Kim, MD<sup>1</sup> , Ki Seok Choo, MD<sup>2\*</sup> , Si Chan Sung, MD<sup>1</sup> , Kwang Ho Choi, MD<sup>1</sup> , Hyoung Doo Lee, MD<sup>3</sup> , Hoon Ko, MD<sup>3</sup> , Joung-Hee Byun, MD<sup>3</sup> , Byung Hee Cho, MS<sup>4</sup>

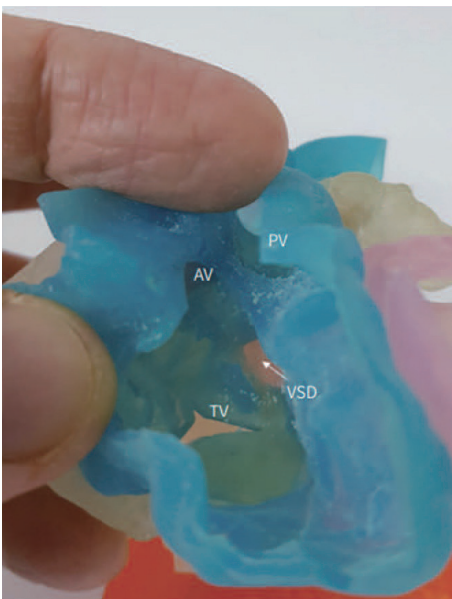
Departments of <sup>1</sup>Thoracic and Cardiovascular Surgery, <sup>2</sup>Radiology, <sup>3</sup>Pediatrics, Research Institute for Convergence of Biomedical Science and Technology, Pusan National University Yangsan Hospital, Pusan National University School of Medicine, Yangsan, Korea  
<sup>4</sup>DMS Co., Ltd., Gyeongsan, Korea

**ORCID iDs**

- Hyungtae Kim   
https://  
orcid.org/0000-0003-3972-456X
- Ki Seok Choo   
https://  
orcid.org/0000-0001-5072-4259
- Si Chan Sung   
https://  
orcid.org/0000-0001-9310-3831
- Kwang Ho Choi   
https://  
orcid.org/0000-0003-4407-2746
- Hyoung Doo Lee   
https://  
orcid.org/0000-0002-6125-187X
- Hoon Ko   
https://  
orcid.org/0000-0002-5834-0900
- Joung-Hee Byun   
https://  
orcid.org/0000-0003-2088-4029
- Byung Hee Cho   
https://  
orcid.org/0000-0003-3690-1647

J Korean Soc Radiol 2020;81(2):310-323  
https://doi.org/10.3348/jksr.2020.81.2.310

In the published article, The author finds errors in the printed version and asks for correction.  
The abbreviation for 'PV' in Figs. 1, 2, and 3 is 'pulmonary valve,' and modifies the placement of text in Fig. 2.



**Fig. 2.** Three-dimensional printed model of the heart of a patient with double-outlet right ventricle patient (arrow, VSD).  
AV = aortic valve, PV = pulmonary valve, TV = tricuspid valve, VSD = ventricular septal defect