

Reply to the Comments on “Case Series: Successful Resuscitation of Severe Facial Injuries Caused by a Chainsaw”

Han Joo Choi, M.D., Ph.D.

Department of Emergency Medicine, Dankook University Hospital, Cheonan, Korea

Received: March 16, 2020

Accepted: March 16, 2020

I would like to sincerely thank you for your interest in my previous study, and to answer the questions that you asked in your comments published in JTI [1].

For case 1, I can present several radiographs comparing between preoperative and postoperative status of the bony structures of the mandible (Fig. 1). There are no pictures of the mouth gag being applied to the patient.

Correspondence to

Han Joo Choi, M.D., Ph.D.

Department of Emergency Medicine,
Dankook University Hospital,
201 Manghyang-ro, Dongnam-gu,
Cheonan 31116, Korea
Tel: +82-41-550-6840
Fax: +82-41-556-0524
E-mail: iqtus@hanmail.net

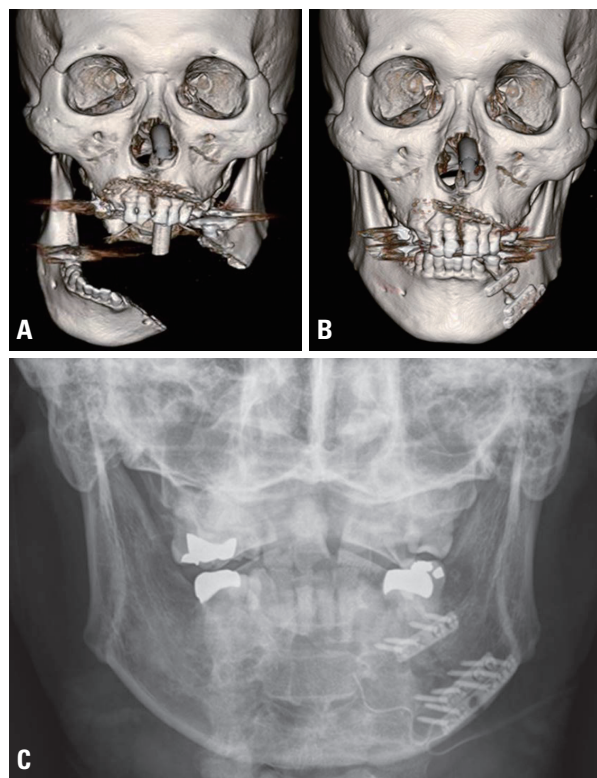


Fig. 1. Three-dimensional reconstructed computed tomography images of the patient in case 1, (A) before and (B) after the reconstructive operation. (C) A simple X-ray series of the mandible shows successful end-to-end restoration of the bony structures.

In case 2, fortunately, there was no evidence of lacrimal canalicular injury before and after the operation. The patient described in case 2 recovered well, without neurological complications.

As mentioned in my previous paper, there are no accurate data about the incidence and injury patterns of chainsaw-related injuries in South Korea. In Europe (including Serbia), the most common site of injuries caused by chainsaw-related accidents was found to be the head (34.8%). On the contrary, the hands and knees were reported to be the most frequent sites in the United States [2,3]. With the goal of providing optimal care, I agree with your suggestion that early involvement of a plastic surgeon is essential.

REFERENCES

1. Hwang K. Comments on “case series: successful resuscitation of severe facial injuries caused by a chainsaw”. *J Trauma Inj* 2019;32:258-9.
2. Cividino SRS, Gubiani R, Pergher G, Dell’Antonia D, Maroncelli E. Accident investigation related to the use of chainsaw. *J Agric Eng* 2013;44:686-9.
3. Hammig B, Jones C. Epidemiology of chain saw related injuries, United States: 2009 through 2013. *Advances in Emergency Medicine* 2015;2015:459697.