

## Case Report



# Endoscopic Management of Pancreaticopleural Fistula in a Child with Hereditary Pancreatitis

Dahye Lee <sup>1</sup>, Eun Joo Lee <sup>1</sup>, Ju Whi Kim <sup>1</sup>, Jin Soo Moon <sup>1</sup>, Yong-Tae Kim <sup>2</sup>, and Jae Sung Ko <sup>1</sup>

<sup>1</sup>Department of Pediatrics, Seoul National University College of Medicine, Seoul, Korea

<sup>2</sup>Department of Internal Medicine, Seoul National University College of Medicine, Seoul, Korea

## OPEN ACCESS

Received: Aug 31, 2018

Revised: Sep 21, 2018

Accepted: Sep 29, 2018

### Correspondence to

Jae Sung Ko

Department of Pediatrics, Seoul National University College of Medicine, 101 Daehak-ro, Jongno-gu, Seoul 03080, Korea.  
E-mail: kojs@snu.ac.kr

Copyright © 2019 by The Korean Society of Pediatric Gastroenterology, Hepatology and Nutrition

This is an open-access article distributed under the terms of the Creative Commons Attribution Non-Commercial License (<https://creativecommons.org/licenses/by-nc/4.0/>) which permits unrestricted non-commercial use, distribution, and reproduction in any medium, provided the original work is properly cited.

### ORCID iDs

Dahye Lee

<https://orcid.org/0000-0002-4768-4468>

Eun Joo Lee

<https://orcid.org/0000-0001-6016-2333>

Ju Whi Kim

<https://orcid.org/0000-0001-8011-3547>

Jin Soo Moon

<https://orcid.org/0000-0001-9760-297X>

Yong-Tae Kim

<https://orcid.org/0000-0002-4842-6874>

Jae Sung Ko

<https://orcid.org/0000-0002-3064-2974>

### Funding

This study did not receive grants by any funding agency in the government, private, and not-for-profit sectors.

## ABSTRACT

Pancreaticopleural fistula (PPF) a fistulous connection between the pancreas and pleural space due to prolonged chronic pancreatitis (CP). PPF is a very rare complication which presents in 0.4% of chronic pancreatitis cases, especially among children. We report a case involving a 3-year-old boy who presented with pleural effusion caused by a PPF, a complication of hereditary pancreatitis, which was, for the first time in Korea, successfully managed with endoscopic treatment. Chest radiography and computed tomography showed massive pleural effusion. Percutaneous catheter drainage was performed. High amylase levels were observed in the pleural fluid and serum, suggesting PPF. The patient was managed with bowel rest and octreotide infusion. Endoscopic retrograde cholangiopancreatography revealed CP, and pleural effusion was successfully managed with stent placement. *PRSS1* genetic screening revealed R122H mutation.

**Keywords:** Pancreaticopleural fistula; Endoscopic retrograde cholangiopancreatography; Chronic pancreatitis; Pancreatic fistula; Pleural effusion

## INTRODUCTION

Pancreaticopleural fistula (PPF) is a fistulous connection between the pancreas and pleural space due to prolonged chronic pancreatitis (CP). PPF is a very rare complication which presents in 0.4% of CP cases. PPF is known to occur mostly (~95%) among adults between 20 and 60 years of age and is rarely seen in pediatric pancreatitis, possibly due to the fact that CP is rare among pediatric pancreatitis [1,2]. PPF in adolescence has previously been reported, but most reports were adult cases [3,4]. Reports of PPF cases in children, especially before adolescence, are extremely rare.

Initial presentation of PPF is usually nonspecific chest symptoms, making it difficult to diagnose PPF and the underlying pancreatitis. While elevated serum amylase and lipase are important for diagnosis of pancreatitis, pleural fluid amylase level is important for PPF diagnosis. Differential diagnosis of elevated pleural fluid amylase includes esophageal perforation and neoplasm, but can usually be distinguished from clinical settings and imaging studies [5].

**Conflict of Interest**

The authors have no financial conflicts of interest.

PPF can be treated with medical, endoscopic, and surgical management. Treatment of childhood PPF with surgical intervention has already been reported [3]. We report the first case of PPF, which was successfully managed with endoscopic stent placement, in a child with hereditary pancreatitis (HP) in Korea.

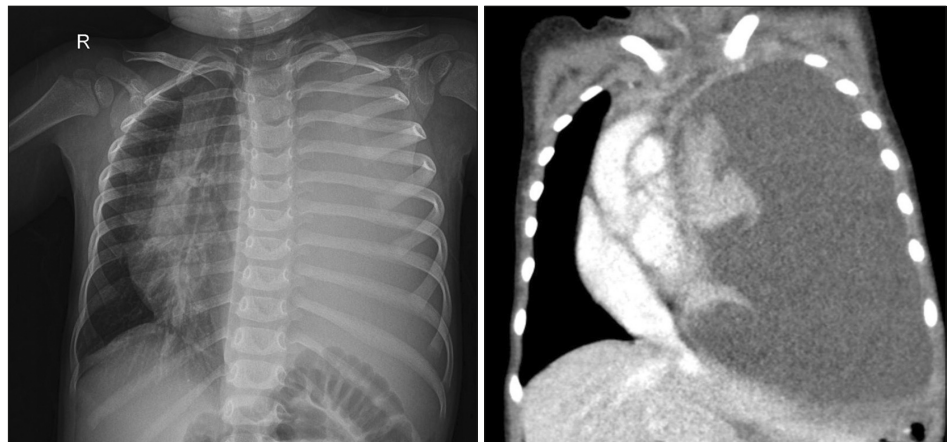
**CASE REPORT**

A 38-month-old boy was brought to the Seoul National University Children's Hospital due to a sudden onset of respiratory difficulty. The patient had no perinatal problems but began to develop intermittent alcoholic stool at 1 year of age. Beginning at 2 years of age, the patient suffered from frequent abdominal cramps. The patient presented with dyspnea and tachypnea but did not show signs of fever, cough, cyanosis, chest pain, vomiting, or abdominal pain.

The patient's height and weight were 95.6 cm (25–50th percentile) and 13.3 kg (10–25th percentile), respectively. His vital signs were as follows: blood pressure, 123/72 mmHg; pulse rate, 152 beats/min; respiratory rate, 36 breaths/min; and body temperature, 36.9°C. The chest wall expanded symmetrically with chest retraction. Decreased breathing sound was heard in the left lung field.

Chest radiography and computed tomography (CT) showed massive left pleural effusion (**Fig. 1**). Percutaneous catheter drainage (PCD) was conducted and pleural effusion was drained. Pleural fluid revealed elevated amylase levels of 25,460 U/L and lipase levels of >6,000 U/L. Serum results also revealed elevated amylase levels of 888 U/L and lipase levels of 1,067 U/L, which was suggestive of acute pancreatitis.

Abdomen CT showed retroperitoneal fluid collection, diffuse pancreatic ductal dilatation, and atrophy in the pancreatic body and tail parenchyma, which was suggestive of CP. Although the abdomen CT did not reveal a definite PPF tract, the elevated amylase and lipase levels from the pleural fluid were suggestive of a fistula tract between the pancreas and pleura. Magnetic resonance cholangiopancreatography (MRCP) revealed suspicious luminal

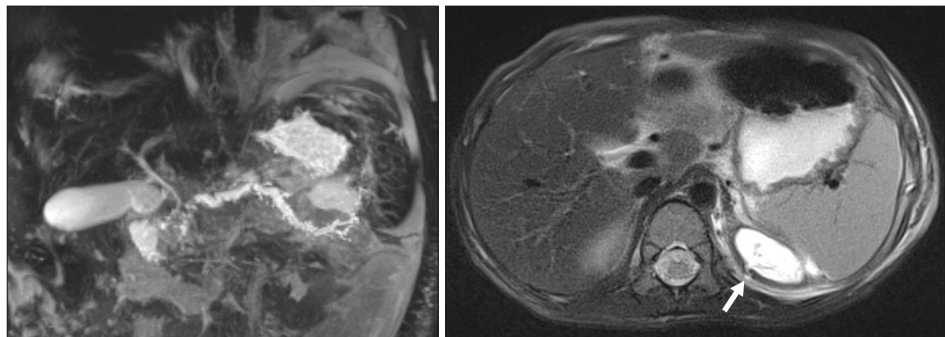


**Fig. 1.** Chest radiography (left) and computed tomography (right) images showing massive left-sided pleural effusion.

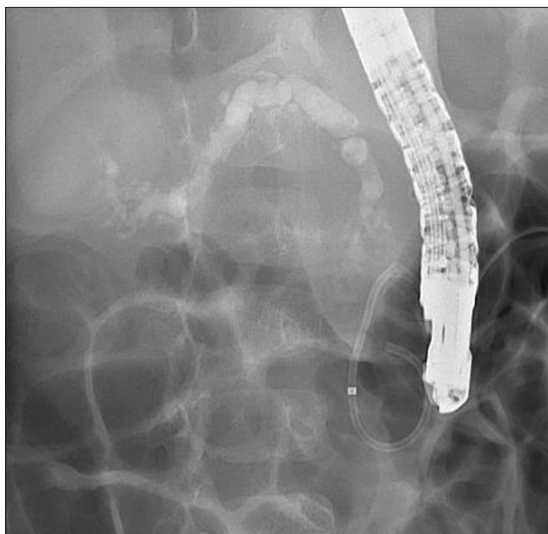
narrowing of the pancreatic duct, with probable pancreatic duct stone and sludge. A tract near the left diaphragm is thought to be the fistula that connects to the pleural cavity (**Fig. 2**).

The patient was kept under fasting conditions with massive intravenous hydration, and octreotide continuous infusion and total parenteral nutrition were initiated. Endoscopic retrograde cholangiopancreatography (ERCP) was performed to further clarify the possible duct anomaly and subsequent treatment. The pancreatic duct was tortuous and dilated, and there was a filling defect due to the pancreaticolith (**Fig. 3**). A single pigtail plastic stent was inserted at the pancreatic duct and some white stones and protein plugs were removed. After symptoms improved, the PCD was removed and octreotide was tapered.

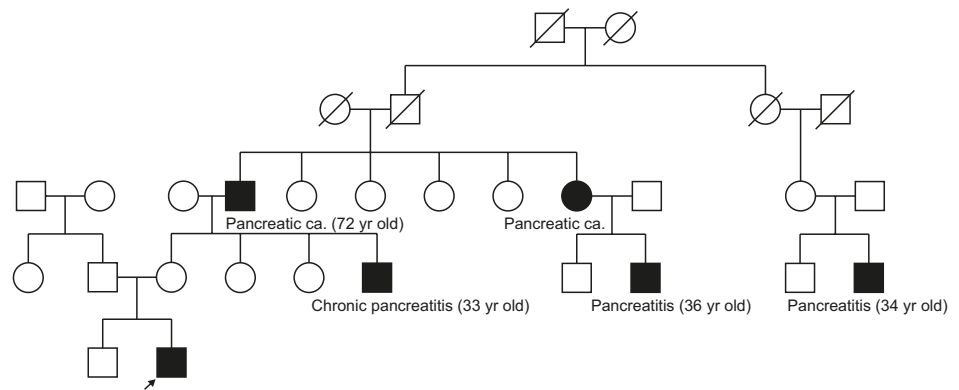
The pancreatic stent was removed spontaneously via defecation 8 days after stent insertion. After 3 days, a fever of up to 39.4°C developed and left pleural effusion increased. Serum amylase and lipase levels were elevated to 285 U/L and 527 U/L, respectively. Medical treatment, including fasting and octreotide continuous infusion, was restarted, and PCD insertion was conducted again. A second ERCP was done, and the stent was placed at the minor papilla through the major papilla. The pleural drain was removed after a week of post-



**Fig. 2.** Magnetic resonance cholangiopancreatography image showing suspicious narrowing of the proximal main pancreatic duct, probably due to a stone or sludge. A tract near the left diaphragm is thought to be the fistula that connects to the pleural cavity (arrow).



**Fig. 3.** Endoscopic retrograde cholangiopancreatography image showing a tortured pancreatic duct stricture due to chronic pancreatitis. A single pigtail plastic stent (5 Fr, 5 cm) was inserted through the minor papilla.



**Fig. 4.** Family pedigree of the patient. The patient's uncle underwent 80% distal pancreatectomy due to chronic pancreatitis with multiple stones, and the grandfather had pancreatic cancer. The great-aunt and first cousin also had pancreatic diseases.

stent insertion with no recurrence or effusion. The patient was discharged at hospital day 32. The stent was removed after 3 months. The patient is being followed-up regularly for exocrine dysfunction and recurrence of pancreatitis by monitoring fecal elastase, and serum amylase and lipase levels, respectively.

This patient had a family history of pancreatic diseases (**Fig. 4**). The patient's uncle underwent 80% distal pancreatectomy due to CP with multiple stones, and the grandfather had pancreatic cancer. The great-aunt and first cousin also had pancreatic diseases. The patient and his family underwent genetic tests, which revealed that the patient, mother, uncle, and grandfather were R122H heterozygotes for *PRSSI* gene which encodes cationic trypsinogen. His father and brother had negative results.

## DISCUSSION

CP can be diagnosed when there is irreversible change to the structure of the pancreas such as sclerosis, destruction, pancreatic duct obstruction with elevated serum lipase or amylase levels, and exocrine/endocrine pancreatic insufficiency. The incidence of CP was 9.62 cases per 100,000 person-years and mortality from CP was 0.09 per 100,000 person-years [6]. There is no research on the epidemiology of pediatric-specific CP. In studies comparing incidence rates by age from 0–34 years and <20 years, it was reported as low as 0.5 per 100,000 people [7]. The incidence rate is proportional to age and the rate in adults is 4–9 times higher than in pediatrics [8].

In contrast with adult CP, in which smoking and alcohol are important risk factors, genetic predisposition is a major cause of CP in children [9]. If pediatric pancreatitis recurs or appears to be chronic, a thorough family history should be conducted and the possibility of HP should be considered [2]. If there are three or more patients with pancreatitis in the second generation of the same household, it is necessary to suspect HP and perform genetic screening. Mutations such as the *PRSSI* gene, CF transmembrane regulator (*CFTR*) gene, serine peptidase inhibitor Kazal type 1 (*SPINK1*) gene, and chymotrypsin C (*CTRC*) gene are well-known to cause HP [10]. The most representative of these are mutations of R122H and N291 in exon 3 and exon 2, respectively, of the *PRSSI* gene. Shin et al. [11] reported N291 mutations in HP for the first time in Korea. This case also had a family history of pancreatic

disease, and an R122H mutation of the *PRSS1* gene was revealed. Although the patient's mother also had a *PRSS1* gene mutation, she did not show any symptoms because the *PRSS1* penetrance is about 78% [12]. Regular outpatient clinic follow-up is recommended as HP patients have higher incidences of exocrine and endocrine failure, diabetes mellitus, and pancreatic cancer [13].

PPF is developed through the leakage of pancreatic fluid as a result of pancreatic duct disruption [1]. When a pancreatic duct or pseudocyst is connected to the pleural cavity, PPF forms [14]. This could result in massive pleural effusion, which may initially present as respiratory symptoms such as dyspnea.

Diagnosis of PPF is established by thoracentesis and ascertaining the elevation of amylase in the pleural fluid. However, pleural effusion due to PPF is rare. The most common cause of amylase-elevated pleural effusion is malignancy, such as lung cancer, leukemia, and metastatic tumors. In addition, liver cirrhosis, tuberculosis, and hydronephrosis also need to be distinguished [4]. Imaging techniques such as CT, MRCP, and ERCP can be used to confirm the fistulous tract between the pancreas and pleural space [15]. Since MRCP is more sensitive than CT and less invasive than ERCP, it is used as the imaging technique of choice [16]. MRCP also found the tract estimated to be the fistula in our case.

PPF treatment can be divided into medical, endoscopic, and surgical methods. Due to the scarcity of PPF, there is no randomized study on treatment comparison. Therefore, there is not a consensus about which treatment is superior. If there is no anomaly of the pancreatic duct or the anomaly is mild, medical treatment is recommended initially. The medical approach consists of fasting and total parenteral nutrition for 2–3 weeks, and octreotide administration to suppress pancreas exocrine function. These allow the pancreas to rest and close the fistulous tract [5]. If there is a large amount of pleural effusion and symptoms, drainage via the chest tube is helpful. In 30–60% of cases, medical treatment is successful, but endoscopic and surgical treatment can also be attempted. In the presence of ductal stenosis, an endoscopic approach can be used initially by placing a stent or balloon dilatation, due to its minimal morbidity and mortality. Stent insertion reduces intraductal pressure and leakage. Endoscopic intervention is generally known to close the fistula within 2–3 weeks in 48% of patients, and the stent usually lasts from 4 weeks to 6 months [1,4]. Although the outcomes of the endoscopic approach are not often reported, one study reported that initial resolution of the duct disruption was achieved in 88% of patients and that fluid collection was reduced by 85% [17]. If stent placement is not possible due to severe duct obstruction or a distally located fistula, or if there is no response to medical management for 3–4 weeks, surgery such as distal pancreatectomy or pancreaticojejunostomy can be considered [9,18]. Operative mortality is less than 5%, and recurrence is about 11%. Long-term prognosis of PPF is known to be good in 80–95% of cases. The total mortality of PPF is about 5% [19].

We described the case of a 3-year-old child who presented with massive pleural effusion due to PPF, which was successfully managed with endoscopic and conservative management for the first time in Korea. Although CP is scarce in children, the patient had a genetic predisposition towards CP, ultimately leading to PPF. Obtaining a detailed history, including family history and accompanying symptoms, in patients with pleural effusion is important in reducing misdiagnosis. In addition, if a child with CP has a family history of pancreatitis, genetic screening (including *PRSS1*) should be performed. PPF should be suspected when

fluid amylase levels are high in patients with pleural effusion and can be treated successfully by conservative and endoscopic treatment.

## REFERENCES

1. Dhebri AR, Ferran N. Nonsurgical management of pancreaticopleural fistula. *JOP* 2005;6:152-61.  
[PUBMED](#)
2. Hastier P, Rouquier P, Buckley M, Simler JM, Dumas R, Delmont JP. Endoscopic treatment of wirsungocysto-pleural fistula. *Eur J Gastroenterol Hepatol* 1998;10:527-9.  
[PUBMED](#) | [CROSSREF](#)
3. Ranuh R, Ditchfield M, Clarnette T, Aldist A, Oliver MR. Surgical management of a pancreaticopleural fistula in a child with chronic pancreatitis. *J Pediatr Surg* 2005;40:1810-2.  
[PUBMED](#) | [CROSSREF](#)
4. Altasan T, Aljehani Y, Almalki A, Algamdi S, Talag A, Alkattan K. Pancreaticopleural fistula: an overlooked entity. *Asian Cardiovasc Thorac Ann* 2014;22:98-101.  
[PUBMED](#) | [CROSSREF](#)
5. Rockey DC, Cello JP. Pancreaticopleural fistula. Report of 7 patients and review of the literature. *Medicine (Baltimore)* 1990;69:332-44.  
[PUBMED](#) | [CROSSREF](#)
6. Xiao AY, Tan ML, Wu LM, Asrani VM, Windsor JA, Yadav D, et al. Global incidence and mortality of pancreatic diseases: a systematic review, meta-analysis, and meta-regression of population-based cohort studies. *Lancet Gastroenterol Hepatol* 2016;1:45-55.  
[PUBMED](#) | [CROSSREF](#)
7. Yadav D, Timmons L, Benson JT, Dierkhising RA, Chari ST. Incidence, prevalence, and survival of chronic pancreatitis: a population-based study. *Am J Gastroenterol* 2011;106:2192-9.  
[PUBMED](#) | [CROSSREF](#)
8. Spanier B, Bruno MJ, Dijkgraaf MG. Incidence and mortality of acute and chronic pancreatitis in the Netherlands: a nationwide record-linked cohort study for the years 1995-2005. *World J Gastroenterol* 2013;19:3018-26.  
[PUBMED](#) | [CROSSREF](#)
9. Vue PM, McFann K, Narkewicz MR. Genetic mutations in pediatric pancreatitis. *Pancreas* 2016;45:992-6.  
[PUBMED](#) | [CROSSREF](#)
10. Garipey CE, Heyman MB, Lowe ME, Pohl JE, Werlin SL, Wilschanski M, et al. Causal evaluation of acute recurrent and chronic pancreatitis in children: consensus from the INSPPIRE group. *J Pediatr Gastroenterol Nutr* 2017;64:95-103.  
[PUBMED](#) | [CROSSREF](#)
11. Shin JY, Oh DS, Rhee JM, Shim JO, Park JS, Ko JS, et al. A case of hereditary pancreatitis with a N29I mutation in the cationic trypsinogen gene. *Korean J Pediatr* 2006;49:1111-5.  
[CROSSREF](#)
12. Keim V, Bauer N, Teich N, Simon P, Lerch MM, Mössner J. Clinical characterization of patients with hereditary pancreatitis and mutations in the cationic trypsinogen gene. *Am J Med* 2001;111:622-6.  
[PUBMED](#) | [CROSSREF](#)
13. Howes N, Lerch MM, Greenhalf W, Stocken DD, Ellis I, Simon P, et al.; European Registry of Hereditary Pancreatitis and Pancreatic Cancer (EUROPAC). Clinical and genetic characteristics of hereditary pancreatitis in Europe. *Clin Gastroenterol Hepatol* 2004;2:252-61.  
[PUBMED](#) | [CROSSREF](#)
14. Cazzo E, Apodaca-Rueda M, Gestic MA, Chaim FHM, Saito HPA, Utrini MP, et al. Management of pancreaticopleural fistulas secondary to chronic pancreatitis. *Arq Bras Cir Dig* 2017;30:225-8.  
[PUBMED](#) | [CROSSREF](#)
15. Francisco E, Mendes M, Vale S, Ferreira J. Pancreaticopleural fistula: an unusual complication of pancreatitis. *BMJ Case Rep* 2015;2015:bcr2014208814.  
[PUBMED](#) | [CROSSREF](#)
16. Ali T, Srinivasan N, Le V, Chimpiri AR, Tierney WM. Pancreaticopleural fistula. *Pancreas* 2009;38:e26-31.  
[PUBMED](#) | [CROSSREF](#)
17. Neher JR, Brady PG, Pinkas H, Ramos M. Pancreaticopleural fistula in chronic pancreatitis: resolution with endoscopic therapy. *Gastrointest Endosc* 2000;52:416-8.  
[PUBMED](#) | [CROSSREF](#)



18. Wronski M, Slodkowski M, Cebulski W, Moronczyk D, Krasnodebski IW. Optimizing management of pancreaticopleural fistulas. *World J Gastroenterol* 2011;17:4696-703.  
[PUBMED](#) | [CROSSREF](#)
19. Wakefield S, Tutty B, Britton J. Pancreaticopleural fistula: a rare complication of chronic pancreatitis. *Postgrad Med J* 1996;72:115-6.  
[PUBMED](#) | [CROSSREF](#)