



Update on Transarterial Chemoembolization with Drug-Eluting Microspheres for Hepatocellular Carcinoma

Yasir M. Nouri, MD, PhD, Jin Hyoung Kim, MD, PhD, Hyun-Ki Yoon, MD, PhD, Heung-Kyu Ko, MD, PhD, Ji Hoon Shin, MD, PhD, Dong Il Gwon, MD, PhD

All authors: Department of Radiology and Research Institute of Radiology, Asan Liver Center, Asan Medical Center, University of Ulsan College of Medicine, Seoul, Korea

Conventional transcatheter arterial chemoembolization (c-TACE) is a widely used first-line palliative treatment for patients with unresectable hepatocellular carcinoma (HCC). Despite the effectiveness of c-TACE, to date, technique and procedure scheduling has not yet been standardized. Drug-eluting microspheres (DEMs) were therefore introduced to ensure more sustained and tumor-selective drug delivery for permanent embolization. These DEMs can load various drugs and release them in a sustained manner over a prolonged period. This approach ensures the delivery of high concentrations of chemotherapeutic agents to tumors, without increasing systemic concentrations, and promote tumor ischemia and necrosis. This review summarizes the recent advances in the use of DEM-TACE to treat HCC.

Keywords: DEB-TACE; DEM-TACE; Chemoembolization; HCC; Liver; Review

INTRODUCTION

Drug-eluting microspheres (DEMs), also called drug-eluting beads (DEBs), are a type of drug delivery system that was introduced in 2006 for the treatment of hepatocellular carcinoma (HCC) (1). Although conventional transcatheter arterial chemoembolization (c-TACE) is considered the first-line palliative treatment for patients with unresectable HCC (2), it has important technical and scheduling drawbacks that have not yet been standardized. Moreover, lipiodol oil used in c-TACE may cause severe pain in some patients. DEM-transcatheter arterial chemoembolization (DEM-TACE) was produced to overcome these drawbacks and ensure

sustained and tumor-selective drug delivery while delivering permanent embolization (1). The microspheres can load a variety of drugs through mechanisms such as ion exchange or absorption (1, 3, 4), and when infused directly into target tumors through catheters or microcatheters, can release chemotherapeutic agents in a sustained manner over a prolonged period (1, 3).

Chemotherapeutic agents delivered through this approach are not only cytotoxic to tumor cells but also cause ischemia and tumor necrosis. Moreover, DEM-TACE results in high concentrations of chemotherapeutic agents being delivered to tumors without elevating systemic concentrations. Therefore, the typical adverse effects associated with c-TACE may be reduced by using DEM-TACE. In this review, recent advances in the use of DEM-TACE for the treatment of HCC are summarized.

Types of Microspheres, Chemotherapeutic Drugs, and Pharmacokinetics

Many types of microspheres are commercially available (Table 1) (5, 6). The microspheres most commonly used in clinical practice are DC Bead® (BTG, London, UK)

Received February 7, 2018; accepted after revision July 24, 2018.

Corresponding author: Jin Hyoung Kim, MD, PhD, Department of Radiology and Research Institute of Radiology, Asan Liver Center, Asan Medical Center, University of Ulsan College of Medicine, 88 Olympic-ro 43-gil, Songpa-gu, Seoul 05505, Korea.

• Tel: (822) 3010-4384 • Fax: (822) 476-0090

• E-mail: jhkimrad@amc.seoul.kr

This is an Open Access article distributed under the terms of the Creative Commons Attribution Non-Commercial License (<https://creativecommons.org/licenses/by-nc/4.0>) which permits unrestricted non-commercial use, distribution, and reproduction in any medium, provided the original work is properly cited.

DEM-TACE for HCC

and HepaSphere™ (Merit Medical, South Jordan, UT, USA). Other microspheres include Oncozene™ TANDEM® (CeloNova BioSciences, Inc., San Antonio, TX, USA) and LifePearl® (Terumo European Interventional Systems, Leuven, Belgium). All are negatively charged and allow the uploading of different types of chemotherapeutic agents. Doxorubicin is most frequently used in DEM-TACE, and *in vitro*, more than 99% of a solution can be loaded into any of the previous four microspheretypes within 1 hour (5). However, other microsphere characteristics differ by product, and some can efficiently load doxorubicin concentrations as high as 45 mg/mL, regardless of the bead size (7) (Fig. 1).

Many preclinical *in vivo* studies have shown the sustained release of pharmacologically active concentrations of doxorubicin into target cancerous tissues over several weeks, with drug diffusion of over 600 μm from the circumference of the beads (8, 9). The local delivery of

doxorubicin in HCC explants was compared among patients embolized receiving DEBs with histological modifications. The results revealed that the distribution of the beads in

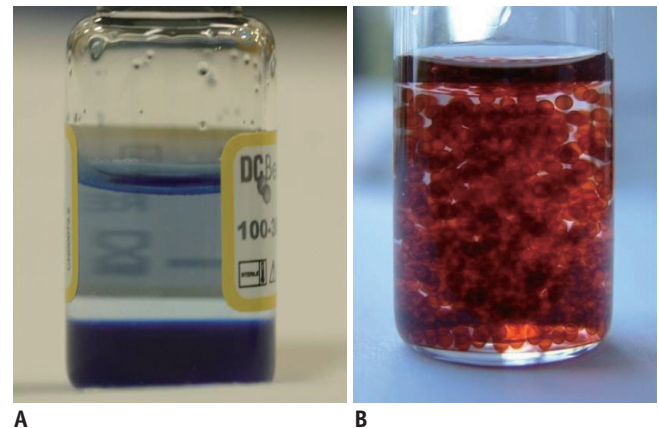


Fig. 1. DC Bead® (BTG).

A. Bottle of DC Bead® (100–300 μm) before loading. **B.** Bottle of DC Bead® (100–300 μm) loaded with doxorubicin.

Table 1. Types and Sizes of Microspheres

Types	Company	Structure	Available Sizes (μm)
DC Bead or LC Bead	BTG, London, UK	Polyvinyl alcohol hydrogel modified with sulfonate groups	70–150
			100–300
			300–500
			500–700
HepaSphere or QuadraSphere	Merit Medical, South Jordan, UT, USA	Poly (vinyl alcohol-co-sodium acrylate) hydrogel	Dry state
			30–60
			50–100
			100–150
			Hydrated state
			120–240
			200–400
Oncozene or Embozene TANDEM	CeloNova BioSciences, Inc., San Antonio, TX, USA	Hydrogel core made of sodium poly (methacrylate) and outer biocompatible shell of poly (bis [trifluoroethoxy] phosphazene)	400–600
			600–800
			Oncozene
			40 ± 10
			75 ± 15
			100 ± 25
			Embozene
			40
			75
			100
250			
LifePearl	Terumo European Interventional Systems, Leuven, Belgium	Hydrogel network of poly (ethylene glycol) and 3-sulfopropyl acrylate	400
			500
			700
			900
LifePearl	Terumo European Interventional Systems, Leuven, Belgium	Hydrogel network of poly (ethylene glycol) and 3-sulfopropyl acrylate	100 ± 25
			200 ± 50
			400 ± 50

the cancerous and surrounding tissue vasculature could be controlled. Indeed, drug release started within the first few hours of bead infusion and was maintained for at least 1 month, with effective necrosis of the target tissue (10).

It has also been reported that peak serum doxorubicin concentrations are significantly lower after DEB-TACE than after c-TACE (11-13). This suggests that the interaction time between the chemotherapeutic agent and tumor cells is increased, while the plasma concentration of the agent is decreased, resulting in more effective treatment and fewer systemic complications (14).

Drug-eluting microspheres are available in different sizes (Table 1). Although large-caliber microspheres (> 300 μm) can cause ischemia, they may be associated with premature embolization of the feeding artery before the chemotherapeutic agent can be completely effective (15). Premature arterial embolization may damage the blood vessel, prevent subsequent tumor-directed treatment (16), and cause hypoxia-induced neoangiogenesis (17, 18). Infusion of 100–300- μm microspheres in an animal model of liver cancer resulted in the delivery of these microspheres into the tumor or near its margins, justifying their use for precise drug delivery or embolization (19). Although many institutions in Korea suggest using 100–300- μm microspheres in the procedure (20), the choice of microsphere size depends on many factors, including tumor size, feeding artery diameter, personal preference and experience, and the presence or absence of an arteriovenous shunt that increases the risk of pulmonary complications (21).

Indications and Contraindications

In general, the indications and contraindications for DEM-TACE are similar to those for c-TACE (Tables 2, 3). Its use depends on the size and vascularity of the tumor, the number of tumors, whether the lesion is infiltrative, and whether the lesion extends to surrounding vessels. Other factors associated with the use of DEM-TACE are the results of liver function tests and possibility of cure. The guidelines of the European Association for the Study of the Liver-European Organisation for Research and Treatment of Cancer recommend TACE as a first-line treatment for asymptomatic patients with preserved liver function who have multinodular lesions but show no evidence of vascular invasion or extrahepatic spread (intermediate stage, or stage B in the Barcelona Clinic Liver Cancer [BCLC] staging system) (22-24). TACE is also an appropriate palliative treatment for patients who require curative treatment but are not suitable for surgery or percutaneous ablation (25). Moreover, DEM-TACE is considered a better option than c-TACE for patients with more advanced disease or cardiac failure, and for those expected to have severe post-embolic toxicity (26).

Although liver transplantation is a curative treatment for appropriately selected patients with HCC, a donor liver may not be immediately available, requiring the candidate to wait. By inducing ischemic tumor necrosis and inhibiting tumor progression, both c-TACE and DEM-TACE can extend the period, during which the patient meets the morphologic criteria for liver transplantation, as well as increasing the

Table 2. Indications for DEM-TACE

Intermediate stage patients, BCLC-B (asymptomatic, multinodular tumors without vascular invasion or extrahepatic spread)
Patients indicated for curative treatment but not eligible for this treatment
Disease recurrence after curative treatment
Extending period during which patient fulfills criteria for liver transplantation
Downstaging disease to fulfill criteria for liver transplantation
Patients indicated for c-TACE but with cardiac failure or expected to have severe post-embolic toxicity

BCLC = Barcelona Clinic Liver Cancer, c-TACE = conventional transcatheter arterial chemoembolization, DEM-TACE = drug-eluting microsphere transcatheter arterial chemoembolization

Table 3. Contraindications for DEM-TACE

Absolute Contraindications	Relative Contraindications
Decompensated baseline liver function	Tumor size \geq 10 cm
Extensive tumor involving both lobes of liver, infiltrative HCC	Comorbidities involving compromised organ function
Technical contraindications (e.g., untreatable arteriovenous fistula)	Untreated varices at high risk of bleeding
Contraindications related to chemotherapeutic drug	Bile duct occlusion or incompetent papilla due to stent or surgery
Renal insufficiency	Contraindications related to contrast

HCC = hepatocellular carcinoma

potential for curative treatment (27, 28). The reduction of active tumor tissue in such a setting would suggest that patients initially not fulfilling the morphologic criteria may ultimately be shown to benefit from liver transplantation (29).

Drug-eluting microsphere transcatheter arterial chemoembolization is contraindicated in patients with decompensated baseline liver function, massive arteriovenous shunts, or infiltrative HCC (21, 30, 31). While portal vein thrombosis was previously considered a contraindication for transarterial therapy (32), it has not been shown to affect survival after DEM-TACE or c-TACE adversely (33-35). Other contraindications are related to the chemotherapeutic drugs and angiographic procedures, such as hypersensitivity to contrast media, renal insufficiency, uncorrectable coagulopathy, and peripheral vascular disease preventing arterial access.

Technique

The principle of DEM-TACE is to standardize targeted

chemotherapeutic agent delivery to ensure a good ischemic effect on tumors and to overcome the drawbacks associated with c-TACE. Although, Lencioni et al. (36) previously described a technique that they proposed as a general guideline for DEM-TACE use (Table 4), there are some approaches that consider each patient and tumor characteristic. DEM agents can be applied to the extrahepatic arteries supplying the tumors (20); however, to the best of our knowledge, no studies have focused on the safety and efficacy of DEM-TACE in this context.

Imaging

An appropriate planning of DEM-TACE requires hepatic tri-phasic dynamic computed tomography (CT) or magnetic resonance imaging to optimize a microsphere delivery of a chemotherapeutic drug to a lesion. Cone-beam CT is considered a useful imaging tool for determining vascular anatomy and anatomical variants, facilitating better tumor targeting and the avoidance of non-target embolization, as well as predicting the efficacy of DEM-TACE (Fig. 2) (37, 38).

Table 4. Summary of Technique

Preparatory imaging
Tri-phasic dynamic CT or MRI
Periprocedural medication
Analgesics
Antibiotics for patients with increased risk of infection
Loading of chemotherapeutic drug
Microspheres are mixed with chemotherapeutic drug for at least 2 hours
After loading, 5–10 mL of nonionic contrast should be per 1 mL of DC Bead® (BTG)
Doses of chemotherapeutic drugs
Each single treatment for patients within Milan criteria consists of 50–75 mg of doxorubicin loaded into one vial containing 2 mL of microspheres
Each single treatment for patients who exceed Milan criteria consists of up to 150 mg of doxorubicin loaded into two vials of microspheres
Treatment of patients with large tumors or tumors involving both lobes usually requires two separate sessions 2–4 weeks apart
Super-selection of HCC tumors
Following initial diagnostic visceral arteriography of superior mesenteric artery, celiac trunk, and common hepatic artery, vascular anatomy, possible feeding arteries and any variants are assessed, as are portal vein status
Microsphere injection
Proper positioning of microcatheter in which it should not be wedged
Microspheres are injected slowly until endpoint near stasis is attained
If endpoint near stasis is not reached after complete injection of all loaded microspheres, another session should be scheduled to repeat treatment
Follow-up and repeat procedures
CT or MRI is done at 1, 3, and 6 months after procedure and at 3 month intervals thereafter
If viable tumors are observed, repeated cycles of DEM-TACE are recommended at 2–3-month intervals
Criteria for stopping treatment include disease progression, failure to achieve targeted objective response, patient deterioration, and persistent hepatic decompensation

CT = computed tomography, MRI = magnetic resonance imaging

Recent literature has indicated that it should be considered a standard technique, particularly in cases of difficult lesion access, such as when lesions are present in the caudate lobe or when they have extrahepatic collateral arteries (39).

Periprocedural Antibiotics

Although a meta-analysis has shown that routine antibiotics may be unnecessary, the judicious use of antibiotics is appropriate for patients at an increased risk of infection (40). Risk factors include old age, larger nodules, bilioenteric anastomosis, biliary stent implantation, compromised hepatic function, hypoalbuminemia, portal vein cancer embolus, and diabetes mellitus (41, 42). The antibiotics used should cover gram-positive and gram-negative aerobic and anaerobic organisms, according to previous reports (40).

Super-Selection of HCCs

Arterial super-selection at the segmental, subsegmental,

and tumor-feeding artery levels was previously considered a favorable prognostic factor for disease-free survival among patients with HCC undergoing c-TACE (43). This was supported by animal studies showing the retention and sustained release of doxorubicin after DC Bead® embolization for up to 90 days after liver embolization (44). Hence, the ischemic effect due to DC Bead® reflux may continue for more than 3 months and be more severe than that produced by c-TACE (44). Recently, a case of multi-organ ischemia was described as a consequence of DC Bead® reflux into the gastroduodenal, right gastric, right gastroepiploic, left gastric, and splenic arteries (45). Therefore, it is preferable for all tumor-feeding arteries to be super-selected to prevent non-target embolization (Fig. 3).

Tumor Response to DEM-TACE

Initial clinical studies confirmed an association between favorable pharmacokinetic profiles of microspheres and good

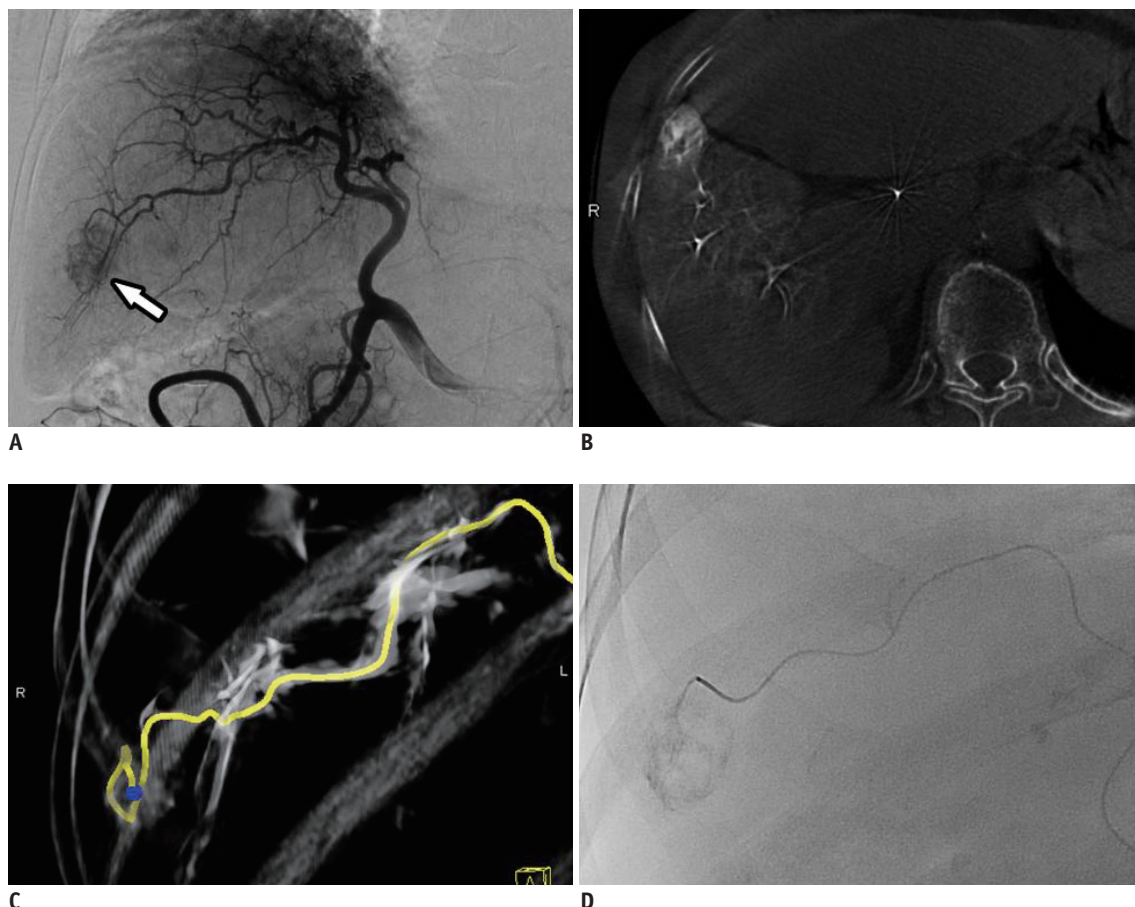


Fig. 2. Technique of HepaSphere™ (Merit Medical) TACE.

A. Hepatic angiography showing single tumor blush (arrow). **B, C.** Cone-beam CT angiography precisely delineating single tumor feeder (yellow line). **D.** HepaSphere™ (30–60 μm) loaded with doxorubicin is slowly injected. CT = computed tomography, TACE = transcatheter arterial chemoembolization

tumor response (Table 5). Objective response rates, defined as the percentages of patients who achieve complete or partial response according to the modified Response Evaluation Criteria in Solid Tumors (RECIST) guidelines, have been found to range from 66.6% to 76.8% (Fig. 4) (1, 46,

47). Since the initial reports, multiple clinical trials have reinforced the use of DEM-TACE in patients with HCC (20, 28, 48, 49). However, clinical results depended on many factors, including cancer stage, number of patients, type and size of microsphere, and follow-up duration.

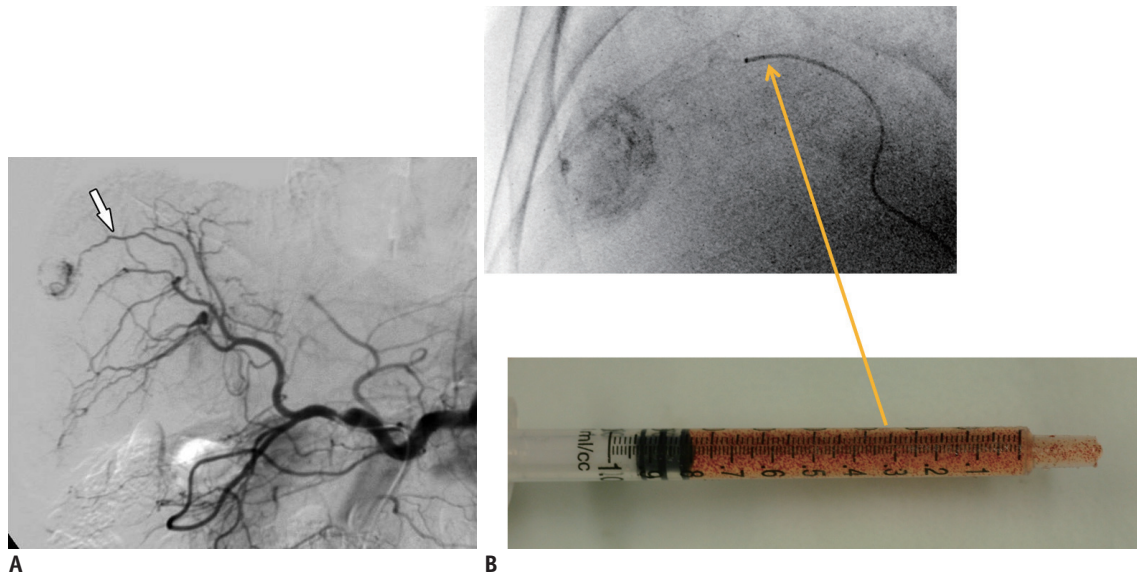


Fig. 3. Technique of DC Bead® (BTG) TACE.

A. Celiac angiography showing single small tumor blush and tumor feeder (arrow). **B.** After selection of tumor feeder using microcatheter, DC Bead® (100–300 μm) loaded with doxorubicin/nonionic contrast suspension are slowly injected, usually over 1 minute for 1 mL injection.

Table 5. Summary of Initial and Recent Clinical Study Showing Response Rate

	Type	Numbers	Child-Pugh	BCLC	Microsphere (μm)	Criteria	Response Rate	Region
Varela et al. 2007 (1)	P	27	A	B	Beads 500–700	RECIST, EASL	6 m: OR 44.4% RECIST OR 66.6% EASL	Spain
Poon et al. 2007 (46)	P	35	A	A, B	Beads 500–700	RECIST, mRECIST	1 m: OR 50% RECIST OR 70% mRECIST 4 m: OR 35.7% RECIST OR 42.9% mRECIST	China
Grosso et al. 2008 (47)	P	50	A, B	N/A	Microspheres 50–100	EASL	1 m: OR 84% 6 m: OR 67%	Italy
Kalva et al. 2011 (48)	R	54	A, B, C	N/A	Beads 300–500	RECIST	1 m: OR 14.8% 3 m: OR 35%	USA
Manini et al. 2015 (49)	P	55	A, B	A	Beads 100–300	mRECIST	1 m: OR 84%	USA
Yu et al. 2016 (28)	R	60	N/A	N/A	Beads 100–300 300–500	mRECIST	1m: OR 73.3%	Taiwan
Lee et al. 2017 (20)	P	152	A, B	A, B, C	Beads 100–300 300–500	mRECIST	1 m: OR 91% 6 m: OR 55.4%	Korea
Sandow et al. 2018 (50)	R	93	A, B, C	A	Beads 100–300	mRECIST	Initial 1 m: OR 76% Final (before transplant mean 179 days): OR 82%	USA

EASL = European Association for Study of Liver, mRECIST = modified Response Evaluation Criteria in Solid Tumors, N/A = non-applicable, OR = objective response, P = prospective, R = retrospective, RECIST = Response Evaluation Criteria in Solid Tumors

In a recent Korean prospective multicenter clinical trial using DEB-TACE among 152 patients, 103 (67.8%) had a Child-Pugh class of A5, 114 (75.0%) had a performance status of 0, and 77 (50.7%) had stage A disease according to the BCLC classification (20). One month after treatment with doxorubicin-loaded DC Bead[®], the complete and objective response rates were 40.1% and 91.4%, respectively. Among the 121 patients who were analyzed at 6 months, the complete and objective response rates were 43.0% and 55.4%, respectively (20).

Yu et al. (28) conducted a prospective study of the effects of DEB-TACE in 60 patients with HCC who were evaluated before liver transplantation. Following initial DEB-TACE with DC Bead[®], 40% achieved complete response and 33.3% achieved partial response according to the modified RECIST guidelines; among these, 15% had stable disease and 11.7% had progressive disease (Fig. 5). No patient experienced major complications or hepatic failure after the procedure. Of the 23 patients who initially did not meet the University of California San Francisco criteria for liver transplantation, 17 (73.9%) were successfully downstaged following DEB-TACE. The high percentage of patients who experienced tumor necrosis with minimal discomfort and without major complications suggests that DEB-TACE may be a safe and effective bridge therapy to liver transplantation in patients with HCC and poor liver function (28).

A retrospective single-center cohort analysis was conducted among 93 consecutive patients between 2011 to 2016 who underwent DEB-TACE using 100–300 μm LC Bead[®] (BTG) before liver transplantation (50). This showed a favorable long-term treatment response in 87% of patients with histologically low-grade tumors (grades 0–2),

including complete and partial response rates of 49% and 38%, respectively. In contrast, only 33% of patients with histologically high-grade tumors (grades 3–4) responded, with complete and partial response rates of 0% and 33%, respectively ($p = 0.001$) (50).

Complications, Safety, and Survival

Drug-eluting microsphere transcatheter arterial chemoembolization is a safe procedure for patients with HCC, with reports showing low rates of serious complications (1.6–7.2%) (20, 51). These complications included hepatic insufficiency or infarction, liver abscess, tumor rupture, bile duct injury, cholecystitis, upper gastrointestinal bleeding, pleural effusion, pulmonary embolism, splenic infarction, and spinal embolization. In contrast, minor procedural complications are more frequent, most being associated with the post-embolic syndrome. These complications are observed in 30.2–67.6% of patients and include fever, nausea and vomiting, and abdominal pain (20, 52). In addition, the incidence of bile duct injury has been reported to be higher in patients with HCC treated with DEM-TACE than in those treated with c-TACE (53). This biliary complication may be due to stasis of the microspheres when there is complete embolization of the feeding artery (20).

Although chemotherapeutic drugs are typically accompanied by systemic complications, including fatigue, fever, gastrointestinal symptoms, neurological injury, pulmonary edema, bone marrow suppression, pulmonary edema, and cardiomyopathy, these are rarely observed in patients treated with DEM-TACE (20, 26). Indeed, it seems that the characteristic pharmacokinetics of DEM-TACE result

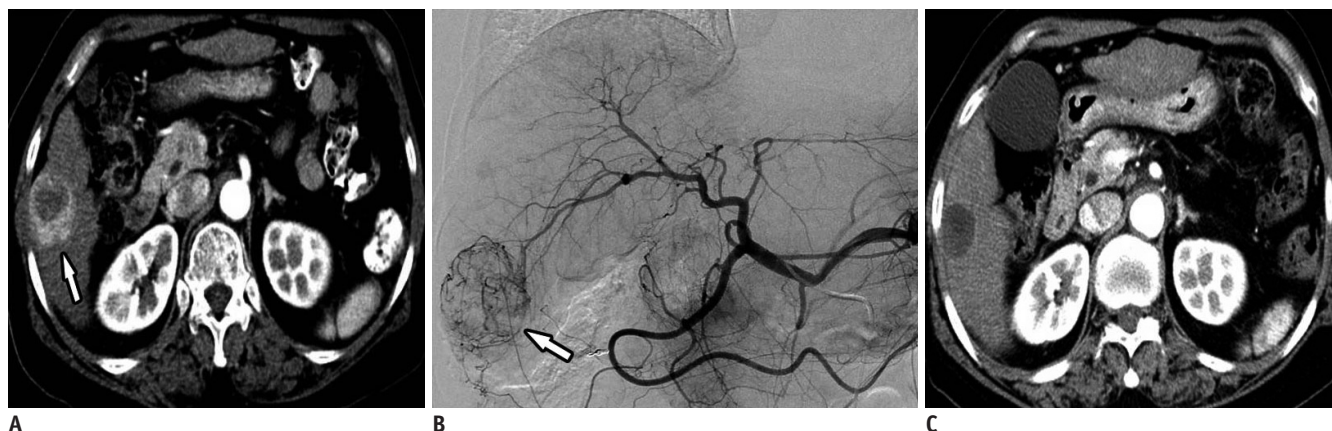


Fig. 4. 70-year-old woman with single, intermediate-size HCC (4.3 cm in diameter).

A. Axial contrast-enhanced CT in arterial phase showing 4.3 cm HCC (arrow) in segment 6. **B.** Hepatic angiography showing single small tumor blush (arrow). **C.** Axial contrast-enhanced CT image one month after HepaSphere[™] (Merit Medical) TACE demonstrating complete response. HCC = hepatocellular carcinoma



Fig. 5. DC Bead® (BTG) TACE as bridge to liver transplantation.

A. Axial contrast-enhanced CT image in arterial phase showing multiple HCCs (beyond Milan criteria) (arrows) in caudate lobe. **B, C.** Arteriography obtained at caudate branch (arrowhead) showing tumor blushes (arrows) in caudate lobe. **D.** Axial contrast-enhanced CT image one month after DC Bead® TACE showing complete response.

in much lower systemic concentrations of doxorubicin compared with c-TACE (1, 3, 5-7).

Notably, according to recently published studies, the 30-day mortality rates in patients treated with DEM-TACE ranged from 0% to 1.2% (54, 55). Whereas the median overall survival periods were 43.8–54 months, the 1-, 2-, 3-, 4-, and 5-year survival rates were 88.2–93.6%, 83.8%, 62.0–67.8%, 41.04–54.2%, and 33.9–39.4%, respectively (54, 56-59).

C-TACE Versus DEB-TACE

Since DEB-TACE first became commercially available in 2006, many clinical trials have shown its efficacy

in patients with HCC and its ability to overcome the drawbacks of c-TACE (Table 6) (26, 33, 59-68). DEB-TACE has, therefore, been used in some institutions as a first-line treatment in addition to c-TACE for the treatment of HCC in patients who are ineligible for curative treatment.

In the original research, DEB-TACE produced major tumor necrosis while reducing the side effects of chemotherapy due to the reduced passage of chemotherapeutic agents into the systemic circulation. Although good results were obtained with a mean doxorubicin dose of 128 mg (range, 47–150 mg), the systemic concentrations of doxorubicin were significantly lower in patients treated with DEB-TACE than in those treated with c-TACE (1). Similarly, a prospective single-blind, randomized phase II study of 30 patients with

Table 6. Summary of Comparison Study between DEM-TACE vs. c-TACE

	Type	DEM-TACE/c-TACE Numbers	Child-Pugh A/B/C (%)	BCLC A/B/C (%)	Criteria	OR (%)	Median/Mean Survival Time in Month	Survival Rate
Lammer et al. 2010 (26)	P	93 vs. 108	82.8/17.2/0 vs. 82.4/17.6/0	25.8/74.2/0 vs. 26.9/73.1/0	EASL	51.6 vs. 43.5	N/A	N/A
Dhanasekaran et al. 2010 (33)	R	45 vs. 26	48.9/24.4/26.7 vs. 42.3/42.3/15.4	N/A	N/A	N/A	20.3/0 vs. 13.4/0	N/A
Ferrer Puchol et al. 2011 (60)	P	47 vs. 25	Both group 87.5/12.5/0	N/A	RECIST	36.1 vs. 15.3	22.4/25.5 vs. 23.6/22.9	N/A
Song et al. 2012 (59)	R	60 vs. 69	93.3/6.7/0 vs. 89.9/10.1/0	45/55/0 vs. 40.6/59.4/0	mRECIST	81.6 vs. 49.4	0/32.2 vs. 0/24.7	1 y 88% vs. 67%
Kloeckner et al. 2015 (61)	R	76 vs. 174	67.1/28.9/3.9 vs. 59.2/36.8/4	10.5/44.7/ 39.5/5.3 vs. 17.2/33.9/ 44.3/4.6	N/A	N/A	12.3/0 vs. 13.6/0	N/A
Kucukay et al. 2015 (62)	R	53 vs. 73	N/A	54.7/35.8/9.6 vs. 39.7/54.8/5.5	N/A	N/A	0/37.4 vs. 0/39	1 y 95.9% vs. 84.9% 2 y 92.3% vs. 74.6%
Arabi et al. 2015 (63)	R	35 vs. 25	68/32/0 vs. 88/12/0	N/A	mRECIST	35 vs. 36	N/A	2 y 58% vs. 60%
Megias Vericat et al. 2015 (64)	R	30 vs. 30	46.7/53.3/0 vs. 66.7/33.3/0	N/A	N/A	N/A	N/A	5 y 20% vs. 30%
Rahman et al. 2016 (65)	R	45 vs. 34	N/A	20/80/0 vs. 32/68/0	mRECIST	39 vs. 29	8.3/0 vs. 4.9/0	N/A
Baur et al. 2016 (66)	R	14 vs. 18	78.6/21.4/0 vs. 58.8/29.7/11.8	N/A	N/A	N/A	9.2/0 vs. 10.8/0	N/A
Massani et al. 2017 (67)	R	28 vs. 54	85.7/14.3/0 vs. 83.3/16.7/0	10.7/14.3/75 vs. 18.5/50/31.5	N/A	N/A	22.7/29.4 vs. 21.8/27	N/A
Lee et al. 2017 (68)	R	106 vs. 144	80.2/19.8/0 vs. 66.0/34.0/0	18.9/72.6/8.5 vs. 34/50.7/15.3	mRECIST	86.8 vs. 78.3	46.6/0 vs. 44.9/0	N/A

y = year

unresectable HCC treated with c-TACE or doxorubicin-eluting HepaSphere™ microspheres showed that the latter had a superior toxicity profile to c-TACE (12). The multicenter, prospective, randomized, single-blind, phase II PRECISION V trial of 212 patients reported objective response rates of 51.6% with DC Bead® and 43.5% with c-TACE (26). However, the overall rates of treatment-emergent complications and serious liver toxicity after embolization were lower among patients treated with DC Bead® than in those treated with c-TACE. These findings indicate that, although the two methods did not significantly differ in efficacy, DEB-TACE was better tolerated and allowed treatment to be repeated in these more vulnerable patients (26).

A retrospective study involving 71 patients reported that DEB-TACE provided a survival advantage over c-TACE,

with subgroup analysis showing clear survival benefits in patients with Okuda stage I tumors, Child-Pugh classes A and B disease, and a Cancer of Liver Italian Program score of ≥ 3 (33). However, the safety profiles of the two modalities were similar (33). In another retrospective study involving 129 patients, DEB-TACE with DC Bead® resulted in superior treatment response and delayed tumor progression compared with c-TACE; however, there were no significant differences in treatment-related hepatic toxicities (59).

Liu et al. (69) also showed high safety and efficacy profiles for DEB-TACE compared with c-TACE. In a retrospective study involving 158 patients with HCC, 64 (40.5%) received TACE with lipiodol-doxorubicin and gelatin sponges (Group A), 41 (25.9%) received TACE with lipiodol-doxorubicin and microspheres (Group B), and 53 (33.5%)

received TACE with doxorubicin-loaded DEBs (Group C). The study found that more patients in Group C (32.1%) achieved complete response than did those in either Group A (6.3%) or Group B (2.4%) ($p < 0.001$). Minor complications were also more common in Group A (54.7%) and Group B (34.1%) than in Group C (5.7%) (69).

In contrast to these data, a meta-analysis of seven studies ($n = 693$ patients) comparing the efficacy of DEB-TACE and c-TACE revealed that tumor response did not differ significantly among methods (70). However, it was conceded that additional large-scale, randomized, controlled studies are required (70). More recent meta-analyses have included multiple randomized controlled trials, prospective studies, and retrospective studies have also shown conflicting results. In a meta-analysis of seven clinical studies ($n = 700$ patients), Huang et al. (71) showed that tumor response was significantly better, and that the 1- and 2-year survival rates were significantly higher for DEB-TACE than for c-TACE. Xie et al. (72) also performed a meta-analysis of four randomized controlled trials, one uncontrolled prospective study, and one prospective case-control study ($n = 652$ patients). They reported similar overall survival rates between c-TACE and DEB-TACE, but that the latter was associated with a significantly higher objective response rate and a slightly lower incidence of complications (72). Chen et al. (73) performed a large meta-analysis of 1832 patients and found that DEB-TACE had higher 1-, 2-, and 3-year overall survival rates, and higher 1- and 2-year relapse-free survival rates. Finally, a meta-analysis involving 1449 patients found no significant differences in the 1-, 2-, and 3-year overall survival and complications rates between c-TACE and DEB-TACE (74).

A recent retrospective study included 82 non-surgical patients with HCC who underwent c-TACE or DEB-TACE and performed follow-up for a minimum of 12 months (67). In the DEB-TACE group, they used beads measuring 100–300 μm in diameter that were loaded with 50 mg of doxorubicin. Although the two methods showed similar efficacy, DEB-TACE was better tolerated, with survival mainly affected by preserved liver function (67). Another retrospective study comparing the clinical outcomes of DEB-TACE and c-TACE in 250 consecutive patients showed comparable treatment outcomes (68). Moreover, it not only failed to identify clinical factors that could help when choosing between these treatment modalities but also showed that tumor size was not associated with treatment outcomes in either group. However, because DEB-TACE showed a better

safety profile when used to treat large carcinomas, it was recommended that its role should be further examined in patients with HCC at risk of aggravated liver function after treatment with c-TACE (68).

A retrospective comparison of survival outcomes was recently performed in 313 patients with unresectable HCC treated with two different TACE regimens: a c-TACE regimen with three drugs and a DEB-TACE regimen with a single drug (75). Interestingly, it showed no significant difference in survival between the two, though patients who underwent DEB-TACE had shorter hospital stays (75).

Together, these conflicting findings indicate that the comparative efficacy, safety, and survival rates of DEB-TACE and c-TACE remain unclear. However, DEB-TACE has consistently been shown to have superior pharmacokinetic properties and lower rates of systemic chemotherapy-associated toxicity, making it the more tolerable option when compared to c-TACE. Based on the current evidence, DEB-TACE may be the superior option when treating patients who are vulnerable or in whom we anticipate deterioration after locoregional chemotherapy.

Strategies for Improving DEM-TACE

Small-Sized Microspheres

Smaller caliber microspheres ($< 100 \mu\text{m}$) may provide better outcomes, with evidence that they show greater distal penetration and more effective embolization than larger microspheres, without influencing patient safety. An animal study of distal embolization showed that occlusion was more distal and that microsphere distribution in the embolized territory was denser when using 30–60- μm rather than 50–100- μm HepaSphere™ microspheres (76). Moreover, the tissue concentration of doxorubicin was higher after embolization with the smaller beads, while the plasma concentration remained very low (76). HepaSphere™ microspheres of dry caliber 30–60- μm are loadable and expand to 120–240 μm in saline and to 96–192 μm after loading with doxorubicin (76). Use of such microspheres in 45 patients who had intermediate stage HCC or who were ineligible for curative treatment produced a local objective response rate of 68.9% in patients who received an intended doxorubicin dosage of 50–100 mg, with an overall complete response rate of 17.8% (Fig. 6) (13). That study also showed very low complication rates, with no deaths or grade 5 complications at 30 days (13). In contrast, the use of larger HepaSphere™ microspheres resulted in lower



Fig. 6. Use of 30–60- μ m HepaSphere™ (Merit Medical) TACE for Multinodular HCCs.

A. Axial contrast-enhanced CT image in arterial phase showing multiple HCCs (arrows) in right lobe of liver. **B, C.** Axial contrast-enhanced CT images in arterial phase after 1 and 6 months, respectively, showing complete response with no recurrence.

objective and complete response rates (56% and 12.6%, respectively) (77). Moreover, the complication rates were lower than previously reported for periprocedural mortality (3%) and post-embolic syndrome (18.54%) with other DEMs (47).

An animal study found that beads ranging in diameter from 70 μ m to 150 μ m are associated with greater tumor coverage, more distal penetration, and higher doxorubicin concentrations in the tumor, without increasing systemic exposure, than is c-TACE (78). An evaluation of the efficacy of 70–150- μ m DEBs (M1 DEB) in 45 patients with HCC who were undergoing TACE as either a primary therapy or as a bridge to liver transplantation reported an objective response rate of 77.7% and a median time to best response of 3 months (95% confidence interval: 2–4 months) (Fig. 7) (79). In 13 patients, DEB-TACE served as an effective bridge, downstaging the tumor to make it eligible for liver transplantation or surgery. Pathological examination also revealed more than 90% necrosis in 10 of the 28 nodules. The most common mild complications (grade 1 or 2) were post-embolic syndrome and abdominal pain, each of which occurred in 4.4% of patients. The only serious complication (grade 3) was bleeding from esophageal varices, which was observed in a patient after portal hypertension worsened; however, this patient was treated conservatively and recovered fully within 1 month (79).

A recent retrospective study involving 421 patients with HCC who underwent DEB-TACE using 70–150 μ m DC Bead® (M1) showed that the overall objective response rates were 94.5% and 99.5% at 3 and 6 months, respectively (55). These rates were higher than those in a previous multicenter randomized controlled trial (26) using DEB-TACE particles of 300–500 μ m and 500–700 μ m in diameter, where the objective response rate was 52% at 6 months. No

patient experienced treatment-related bleeding, pulmonary complications, or death (55). However, embolization with larger particles has been associated with a 30-day mortality rate of 1.2% (2 of 173 patients died due to procedure-related liver abscess or sepsis) (54) and 10 major complications among 104 patients (3 abscesses and 1 death) (56).

Microcatheter Super-Selection

A successful delivery of loaded microspheres to tumors, while minimizing complications, requires super-selection of the feeding artery to avoid damage of non-targeted arteries. Several recently developed techniques have sought to achieve this goal.

In one report, detachable microcoils were used to divert blood flow temporarily in a patient who was undergoing DEB-TACE for a recurrent HCC in segments 8 and 4 after previously undergoing left hepatectomy (80). The recurrent tumor had a small feeding artery arising at an acute angle from the proximal right hepatic artery. Two microcatheters were inserted: the first in the right hepatic artery distal to the opening of the branch vessel supplying the residual tumor and the second in the proximal right hepatic artery, proximal to the ostium of the feeding artery. A 5-mm detachable coil was subsequently loaded through the distal catheter and deployed in the right hepatic artery, followed by the infusion of DC Bead® (80).

Similarly, a double-lumen microballoon catheter with a side hole at the leading end of the balloon was used to infuse chemotherapy during c-TACE in the treatment of HCC, although without super-selective catheterization of the target artery (81). This technique enabled prompt infusion of chemotherapeutic agents into the target artery via distal occlusion of the parent artery, with the distal occlusion

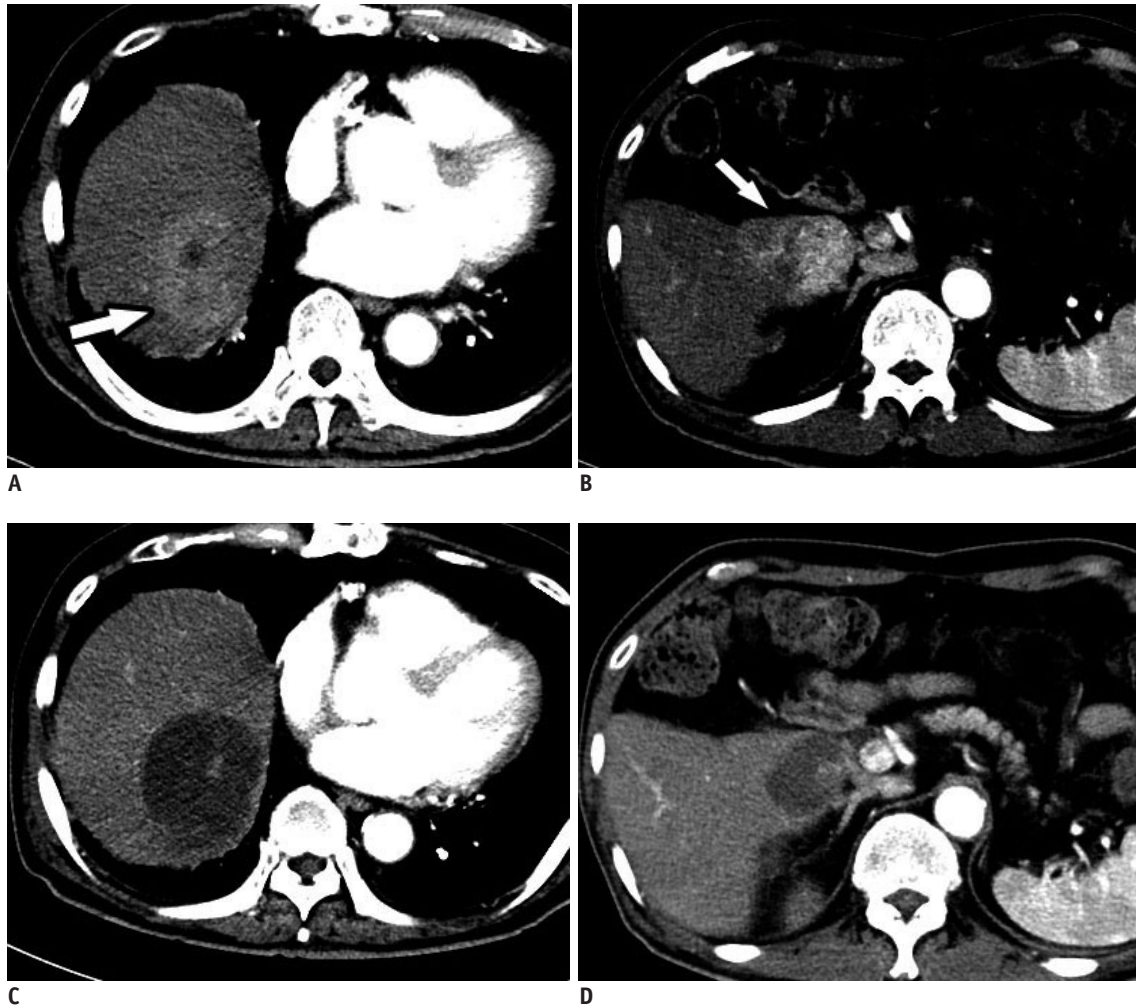


Fig. 7. Use of 70–150- μm DC Bead[®] (BTG) TACE for Multinodular HCCs.

A, B. Axial contrast-enhanced CT images in arterial phase showing multiple HCCs (arrows) in right lobe of liver. **C, D.** Axial contrast-enhanced CT images in arterial phase after 1 month showing only partial response.

ensuring the preservation of a broad area of normal hepatocytes.

Radio-Opaque Microspheres

Mixing nonionic contrast with loaded beads is essential for direct fluoroscopic monitoring and is typically achieved using drug-eluting radio-opaque beads (82, 83). LC Bead LUMI[™] microspheres are sulfonate-modified polyvinyl alcohol hydrogel micro-beads that measure 70–150 μm in diameter and contain covalently bound iodine (83). Their radio-opacity allows for the real-time assessment of their deposition in the target tumor. Theoretically, the density and distribution of the radio-opaque beads can provide additional information to refine the embolization endpoint and the degree of flow stasis. This allows a better prospective visualization of non-target reflux and small

branch feeders. Moreover, contrast retained by DEBs in dense vessels is typically washed out within minutes of the procedures, ensuring a lack of peripheral contrast retention, which has been reported to be a risk factor for treatment failure (84). Performing non-enhanced CT scan immediately to assess contrast retention after embolization may provide important information about treatment (85). The visibility of radio-opaque beads may also provide additional information about the expected effects of treatment, follow-up, and planning for the next session, as required.

CONCLUSION

Most patients with HCC are diagnosed with intermediate stage tumors, making curative treatment unavailable. Although c-TACE has been considered the treatment of

choice for these patients, it has several limitations. DEM-TACE, was therefore, developed to overcome the drawbacks typically associated with c-TACE. Although studies comparing the safety and effectiveness of these methods have failed to show statistically significant superiority with the use of DEM-TACE, this method is considered more tolerable because it eliminates the toxicity associated with systemic chemotherapy. Further improvements in embolization techniques and microsphere types, including a better delineation of the optimal size, are needed to improve the efficacy of DEM-TACE and to widen its applications.

Conflicts of Interest

The authors have no financial conflicts of interest.

ORCID

Jin Hyoung Kim

<https://orcid.org/0000-0002-7300-6396>

Yasir M. Nouri

<https://orcid.org/0000-0002-1067-0724>

REFERENCES

- Varela M, Real MI, Burrell M, Forner A, Sala M, Brunet M, et al. Chemoembolization of hepatocellular carcinoma with drug eluting beads: efficacy and doxorubicin pharmacokinetics. *J Hepatol* 2007;46:474-481
- Forner A, Reig ME, de Lope CR, Bruix J. Current strategy for staging and treatment: the BCLC update and future prospects. *Semin Liver Dis* 2010;30:61-74
- Sottani C, Poggi G, Quaretti P, Regazzi M, Montagna B, Quaquerani E, et al. Serum pharmacokinetics in patients treated with transarterial chemoembolization (TACE) using two types of epirubicin-loaded microspheres. *Anticancer Res* 2012;32:1769-1774
- Jiaqi Y, Hori S, Minamitani K, Hashimoto T, Yoshimura H, Nomura N, et al. [A new embolic material: super absorbent polymer (SAP) microsphere and its embolic effects]. *Nihon Igaku Hoshasen Gakkai Zasshi* 1996;56:19-24
- de Baere T, Plotkin S, Yu R, Sutter A, Wu Y, Cruise GM. An in vitro evaluation of four types of drug-eluting microspheres loaded with doxorubicin. *J Vasc Interv Radiol* 2016;27:1425-1431
- Pereira PL, Plotkin S, Yu R, Sutter A, Wu Y, Sommer CM, et al. An in-vitro evaluation of three types of drug-eluting microspheres loaded with irinotecan. *Anticancer Drugs* 2016;27:873-878
- Lewis AL, Gonzalez MV, Lloyd AW, Hall B, Tang Y, Willis SL, et al. DC bead: in vitro characterization of a drug-delivery device for transarterial chemoembolization. *J Vasc Interv Radiol* 2006;17(2 Pt 1):335-342
- Namur J, Wassef M, Millot JM, Lewis AL, Manfait M, Laurent A. Drug-eluting beads for liver embolization: concentration of doxorubicin in tissue and in beads in a pig model. *J Vasc Interv Radiol* 2010;21:259-267
- Hong K, Khwaja A, Liapi E, Torbenson MS, Georgiades CS, Geschwind JF. New intra-arterial drug delivery system for the treatment of liver cancer: preclinical assessment in a rabbit model of liver cancer. *Clin Cancer Res* 2006;12:2563-2567
- Namur J, Citron SJ, Sellers MT, Dupuis MH, Wassef M, Manfait M, et al. Embolization of hepatocellular carcinoma with drug-eluting beads: doxorubicin tissue concentration and distribution in patient liver explants. *J Hepatol* 2011;55:1332-1338
- Varela M, Sala M, Llovet JM, Bruix J. Treatment of hepatocellular carcinoma: is there an optimal strategy? *Cancer Treat Rev* 2003;29:99-104
- van Malenstein H, Maleux G, Vandecaveye V, Heye S, Laleman W, van Pelt J, et al. A randomized phase II study of drug-eluting beads versus transarterial chemoembolization for unresectable hepatocellular carcinoma. *Onkologie* 2011;34:368-376
- Malagari K, Pomoni M, Moschouris H, Kelekis A, Charokopakis A, Bouma E, et al. Chemoembolization of hepatocellular carcinoma with HepaSphere 30-60 µm. Safety and efficacy study. *Cardiovasc Intervent Radiol* 2014;37:165-175
- Emerich DF, Snodgrass P, Lafreniere D, Dean RL, Salzberg H, Marsh J, et al. Sustained release chemotherapeutic microspheres provide superior efficacy over systemic therapy and local bolus infusions. *Pharm Res* 2002;19:1052-1060
- Lewis AL, Dreher MR, O'Byrne V, Grey D, Caine M, Dunn A, et al. DC BeadM1™: towards an optimal transcatheter hepatic tumour therapy. *J Mater Sci Mater Med* 2016;27:13
- Lee S, Kim KM, Lee SJ, Lee KH, Lee DY, Kim MD, et al. Hepatic arterial damage after transarterial chemoembolization for the treatment of hepatocellular carcinoma: comparison of drug-eluting bead and conventional chemoembolization in a retrospective controlled study. *Acta Radiol* 2017;58:131-139
- Kobayashi N, Ishii M, Ueno Y, Kisara N, Chida N, Iwasaki T, et al. Co-expression of Bcl-2 protein and vascular endothelial growth factor in hepatocellular carcinomas treated by chemoembolization. *Liver* 1999;19:25-31
- Wang B, Xu H, Gao ZQ, Ning HF, Sun YQ, Cao GW. Increased expression of vascular endothelial growth factor in hepatocellular carcinoma after transcatheter arterial chemoembolization. *Acta Radiol* 2008;49:523-529
- Lee KH, Liapi E, Vossen JA, Buijs M, Ventura VP, Georgiades C, et al. Distribution of iron oxide-containing Embosphere particles after transcatheter arterial embolization in an animal model of liver cancer: evaluation with MR imaging and implication for therapy. *J Vasc Interv Radiol* 2008;19:1490-1496
- Lee M, Chung JW, Lee KH, Won JY, Chun HJ, Lee HC, et

- al. Korean multicenter registry of transcatheter arterial chemoembolization with drug-eluting embolic agents for nodular hepatocellular carcinomas: six-month outcome analysis. *J Vasc Interv Radiol* 2017;28:502-512
21. Lee JH, Won JH, Park SI, Won JY, Lee DY, Kang BC. Transcatheter arterial chemoembolization of hepatocellular carcinoma with hepatic arteriovenous shunt after temporary balloon occlusion of hepatic vein. *J Vasc Interv Radiol* 2007;18:377-382
 22. European Association for Study of Liver; European Organisation for Research and Treatment of Cancer. EASL-EORTC clinical practice guidelines: management of hepatocellular carcinoma. *Eur J Cancer* 2012;48:599-641
 23. Bruix J, Llovet JM. Prognostic prediction and treatment strategy in hepatocellular carcinoma. *Hepatology* 2002;35:519-524
 24. Kim JH, Shim JH, Lee HC, Sung KB, Ko HK, Ko GY, et al. New intermediate-stage subclassification for patients with hepatocellular carcinoma treated with transarterial chemoembolization. *Liver Int* 2017;37:1861-1868
 25. Han K, Kim JH. Transarterial chemoembolization in hepatocellular carcinoma treatment: Barcelona clinic liver cancer staging system. *World J Gastroenterol* 2015;21:10327-10335
 26. Lammer J, Malagari K, Vogl T, Pilleul F, Denys A, Watkinson A, et al.; PRECISION V Investigators. Prospective randomized study of doxorubicin-eluting-bead embolization in the treatment of hepatocellular carcinoma: results of the PRECISION V study. *Cardiovasc Intervent Radiol* 2010;33:41-52
 27. Hołowko W, Wróblewski T, Wojtaszek M, Grąt M, Kobryń K, Ziarkiewicz-Wróblewska B, et al. Transarterial chemoembolization prior to liver transplantation in patients with hepatocellular carcinoma. *Ann Transplant* 2015;20:764-768
 28. Yu CY, Ou HY, Weng CC, Huang TL, Chen TY, Leung-Chit L, et al. Drug-eluting bead transarterial chemoembolization as bridge therapy for hepatocellular carcinoma before living-donor liver transplantation. *Transplant Proc* 2016;48:1045-1048
 29. Clavien PA, Lesurtel M, Bossuyt PM, Gores GJ, Langer B, Perrier A; OLT for HCC Consensus Group. Recommendations for liver transplantation for hepatocellular carcinoma: an international consensus conference report. *Lancet Oncol* 2012;13:e11-e22
 30. Charmsangavej C. Chemoembolization of liver tumors. *Semin Intervent Radiol* 1993;10:150-160
 31. Sellers MT, Huggins S, Kegley K, Pollinger HS, Shrestha R, Johnson MW, et al. Multivariate analysis of prognostic factors for survival following doxorubicin-eluting bead transarterial chemoembolization for hepatocellular carcinoma. *J Vasc Interv Radiol* 2013;24:647-654
 32. Lladó L, Virgili J, Figueras J, Valls C, Dominguez J, Rafecas A, et al. A prognostic index of the survival of patients with unresectable hepatocellular carcinoma after transcatheter arterial chemoembolization. *Cancer* 2000;88:50-57
 33. Dhanasekaran R, Kooby DA, Staley CA, Kauh JS, Khanna V, Kim HS. Prognostic factors for survival in patients with unresectable hepatocellular carcinoma undergoing chemoembolization with doxorubicin drug-eluting beads: a preliminary study. *HPB (Oxford)* 2010;12:174-180
 34. Fan J, Wu ZQ, Tang ZY, Zhou J, Qiu SJ, Ma ZC, et al. Multimodality treatment in hepatocellular carcinoma patients with tumor thrombi in portal vein. *World J Gastroenterol* 2001;7:28-32
 35. Kim JH, Shim JH, Yoon HK, Ko HK, Kim JW, Gwon DI. Chemoembolization related to good survival for selected patients with hepatocellular carcinoma invading segmental portal vein. *Liver Int* 2018;38:1646-1654
 36. Lencioni R, de Baere T, Burrel M, Caridi JG, Lammer J, Malagari K, et al. Transcatheter treatment of hepatocellular carcinoma with doxorubicin-loaded DC Bead (DEBDOX): technical recommendations. *Cardiovasc Intervent Radiol* 2012;35:980-985
 37. Kim HC. Role of C-arm cone-beam CT in chemoembolization for hepatocellular carcinoma. *Korean J Radiol* 2015;16:114-124
 38. Tacher V, Radaelli A, Lin M, Geschwind JF. How I do it: cone-beam CT during transarterial chemoembolization for liver cancer. *Radiology* 2015;274:320-334
 39. Choi JW, Kim HC, Lee JH, Yu SJ, Cho EJ, Kim MU, et al. Cone beam CT-guided chemoembolization of probable hepatocellular carcinomas smaller than 1 cm in patients at high risk of hepatocellular carcinoma. *J Vasc Interv Radiol* 2017;28:795-803.e1
 40. Wang J, He XD, Zhang YC. Antibiotic prophylaxis in transarterial therapy of hepatocellular carcinoma: a meta-analysis. *Can J Gastroenterol* 2012;26:85-91
 41. Lv WF, Lu D, He YS, Xiao JK, Zhou CZ, Cheng DL. Liver abscess formation following transarterial chemoembolization: clinical features, risk factors, bacteria spectrum, and percutaneous catheter drainage. *Medicine (Baltimore)* 2016;95:e3503
 42. Woo S, Chung JW, Hur S, Joo SM, Kim HC, Jae HJ, et al. Liver abscess after transarterial chemoembolization in patients with bilioenteric anastomosis: frequency and risk factors. *AJR Am J Roentgenol* 2013;200:1370-1377
 43. Ji SK, Cho YK, Ahn YS, Kim MY, Park YO, Kim JK, et al. Multivariate analysis of the predictors of survival for patients with hepatocellular carcinoma undergoing transarterial chemoembolization: focusing on superselective chemoembolization. *Korean J Radiol* 2008;9:534-540
 44. Lewis AL, Taylor RR, Hall B, Gonzalez MV, Willis SL, Stratford PW. Pharmacokinetic and safety study of doxorubicin-eluting beads in a porcine model of hepatic arterial embolization. *J Vasc Interv Radiol* 2006;17:1335-1343
 45. Kim YW, Kwon JH, Nam SW, Jang JW, Jung HS, Shin YR, et al. Sustained multiple organ ischaemia after transarterial chemoembolization with drug-eluting beads for hepatocellular carcinoma. *Exp Ther Med* 2018;15:1479-1483

46. Poon RT, Tso WK, Pang RW, Ng KK, Woo R, Tai KS, et al. A phase I/II trial of chemoembolization for hepatocellular carcinoma using a novel intra-arterial drug-eluting bead. *Clin Gastroenterol Hepatol* 2007;5:1100-1108
47. Grosso M, Vignali C, Quaretti P, Nicolini A, Melchiorre F, Gallarato G, et al. Transarterial chemoembolization for hepatocellular carcinoma with drug-eluting microspheres: preliminary results from an Italian multicentre study. *Cardiovasc Intervent Radiol* 2008;31:1141-1149
48. Kalva SP, Iqbal SI, Yeddula K, Blazskowsky LS, Akbar A, Wicky S, et al. Transarterial chemoembolization with doxorubicin-eluting microspheres for inoperable hepatocellular carcinoma. *Gastrointest Cancer Res* 2011;4:2-8
49. Manini MA, Sangiovanni A, Martinetti L, Viganò D, La Mura V, Aghemo A, et al. Transarterial chemoembolization with drug-eluting beads is effective for the maintenance of the Milan-in status in patients with a small hepatocellular carcinoma. *Liver Transpl* 2015;21:1259-1269
50. Sandow TA, Arndt SE, Albar AA, DeVun DA, Kirsch DS, Gimenez JM, et al. Assessment of response to transcatheter arterial chemoembolization with doxorubicin-eluting microspheres: tumor biology and hepatocellular carcinoma recurrence in a 5-year transplant cohort. *Radiology* 2018;286:1072-1083
51. Popovic P, Stabuc B, Jansa R, Garbajs M. Survival of patients with intermediate stage hepatocellular carcinoma treated with superselective transarterial chemoembolization using doxorubicin-loaded DC Bead under cone-beam computed tomography control. *Radiol Oncol* 2016;50:418-426
52. Prajapati HJ, Dhanasekaran R, El-Rayes BF, Kauh JS, Maithel SK, Chen Z, et al. Safety and efficacy of doxorubicin drug-eluting bead transarterial chemoembolization in patients with advanced hepatocellular carcinoma. *J Vasc Interv Radiol* 2013;24:307-315
53. Guiu B, Deschamps F, Aho S, Munck F, Dromain C, Boige V, et al. Liver/biliary injuries following chemoembolisation of endocrine tumours and hepatocellular carcinoma: lipiodol vs. drug-eluting beads. *J Hepatol* 2012;56:609-617
54. Malagari K, Pomoni M, Moschouris H, Bouma E, Koskinas J, Stefaniotou A, et al. Chemoembolization with doxorubicin-eluting beads for unresectable hepatocellular carcinoma: five-year survival analysis. *Cardiovasc Intervent Radiol* 2012;35:1119-1128
55. Aliberti C, Carandina R, Lonardi S, Dadduzio V, Vitale A, Gringeri E, et al. Transarterial chemoembolization with small drug-eluting beads in patients with hepatocellular carcinoma: experience from a cohort of 421 patients at an Italian center. *J Vasc Interv Radiol* 2017;28:1495-1502
56. Burrel M, Reig M, Forner A, Barrufet M, de Lope CR, Tremosini S, et al. Survival of patients with hepatocellular carcinoma treated by transarterial chemoembolisation (TACE) using drug eluting beads. Implications for clinical practice and trial design. *J Hepatol* 2012;56:1330-1335
57. Luz JH, Luz PM, Martin HS, Gouveia HR, Levigard RB, Nogueira FD, et al. DEB TACE for intermediate and advanced HCC - Initial experience in a Brazilian Cancer Center. *Cancer Imaging* 2017;17:5
58. Kalva SP, Pectasides M, Liu R, Rachamreddy N, Surakanti S, Yeddula K, et al. Safety and effectiveness of chemoembolization with drug-eluting beads for advanced-stage hepatocellular carcinoma. *Cardiovasc Intervent Radiol* 2014;37:381-387
59. Song MJ, Chun HJ, Song DS, Kim HY, Yoo SH, Park CH, et al. Comparative study between doxorubicin-eluting beads and conventional transarterial chemoembolization for treatment of hepatocellular carcinoma. *J Hepatol* 2012;57:1244-1250
60. Ferrer Puchol MD, la Parra C, Esteban E, Vaño M, Forment M, Vera A, et al. [Comparison of doxorubicin-eluting bead transarterial chemoembolization (DEB-TACE) with conventional transarterial chemoembolization (TACE) for the treatment of hepatocellular carcinoma]. *Radiologia* 2011;53:246-253
61. Kloeckner R, Weinmann A, Prinz F, Pinto dos Santos D, Ruckes C, Dueber C, et al. Conventional transarterial chemoembolization versus drug-eluting bead transarterial chemoembolization for the treatment of hepatocellular carcinoma. *BMC Cancer* 2015;15:465
62. Kucukay F, Badem S, Karan A, Ozdemir M, Okten RS, Ozbulbul NI, et al. A single-center retrospective comparison of doxorubicin-loaded HepaSphere transarterial chemoembolization with conventional transarterial chemoembolization for patients with unresectable hepatocellular carcinoma. *J Vasc Interv Radiol* 2015;26:1622-1629
63. Arabi M, BenMousa A, Bzeizi K, Garad F, Ahmed I, Al-Otaibi M. Doxorubicin-loaded drug-eluting beads versus conventional transarterial chemoembolization for nonresectable hepatocellular carcinoma. *Saudi J Gastroenterol* 2015;21:175-180
64. Megías Vericat JE, García Marcos R, López Briz E, Gómez Muñoz F, Ramos Ruiz J, Martínez Rodrigo JJ, et al. Transarterial chemoembolization with doxorubicin-eluting particles versus conventional trans-arterial chemoembolization in unresectable hepatocellular carcinoma: a study of effectiveness, safety and costs. *Radiologia* 2015;57:496-504
65. Rahman FA, Naidu J, Ngiu CS, Yaakob Y, Mohamed Z, Othman H, et al. Conventional versus doxorubicin-eluting beads transarterial chemoembolization for unresectable hepatocellular carcinoma: a tertiary medical centre experience in Malaysia. *Asian Pac J Cancer Prev* 2016;17:4037-4041
66. Baur J, Ritter CO, Germer CT, Klein I, Kickuth R, Steger U. Transarterial chemoembolization with drug-eluting beads versus conventional transarterial chemoembolization in locally advanced hepatocellular carcinoma. *Hepat Med* 2016;8:69-74
67. Massani M, Stecca T, Ruffolo C, Bassi N. Should we routinely use DEBTACE for unresectable HCC? cTACE versus DEBTACE: a single-center survival analysis. *Updates Surg* 2017;69:67-73
68. Lee YK, Jung KS, Kim DY, Choi JY, Kim BK, Kim SU, et al. Conventional versus drug-eluting beads chemoembolization for hepatocellular carcinoma: emphasis on the impact of

- tumor size. *J Gastroenterol Hepatol* 2017;32:487-496
69. Liu YS, Ou MC, Tsai YS, Lin XZ, Wang CK, Tsai HM, et al. Transarterial chemoembolization using gelatin sponges or microspheres plus lipiodol-doxorubicin versus doxorubicin-loaded beads for the treatment of hepatocellular carcinoma. *Korean J Radiol* 2015;16:125-132
 70. Gao S, Yang Z, Zheng Z, Yao J, Deng M, Xie H, et al. Doxorubicin-eluting bead versus conventional TACE for unresectable hepatocellular carcinoma: a meta-analysis. *Hepatogastroenterology* 2013;60:813-820
 71. Huang K, Zhou Q, Wang R, Cheng D, Ma Y. Doxorubicin-eluting beads versus conventional transarterial chemoembolization for the treatment of hepatocellular carcinoma. *J Gastroenterol Hepatol* 2014;29:920-925
 72. Xie ZB, Wang XB, Peng YC, Zhu SL, Ma L, Xiang BD, et al. Systematic review comparing the safety and efficacy of conventional and drug-eluting bead transarterial chemoembolization for inoperable hepatocellular carcinoma. *Hepatol Res* 2015;45:190-200
 73. Chen P, Yuan P, Chen B, Sun J, Shen H, Qian Y. Evaluation of drug-eluting beads versus conventional transcatheter arterial chemoembolization in patients with unresectable hepatocellular carcinoma: a systematic review and meta-analysis. *Clin Res Hepatol Gastroenterol* 2017;41:75-85
 74. Facciorusso A, Di Maso M, Muscatiello N. Drug-eluting beads versus conventional chemoembolization for the treatment of unresectable hepatocellular carcinoma: a meta-analysis. *Dig Liver Dis* 2016;48:571-577
 75. Gomes AS, Monteleone PA, Sayre JW, Finn RS, Sadeghi S, Tong MJ, et al. Comparison of triple-drug transcatheter arterial chemoembolization (TACE) with single-drug TACE using doxorubicin-eluting beads: long-term survival in 313 patients. *AJR Am J Roentgenol* 2017;209:722-732
 76. Dinca H, Pelage JP, Baylatry MT, Ghegediban SH, Pascale F, Manfait M, et al. *Why do small size doxorubicin-eluting microspheres induce more tissue necrosis than larger ones? A comparative study in healthy pig liver (oral communication 2206-2)*. CIRSE Annual meeting;2012 September, 15-19;Lisbon, Portugal
 77. Seki A, Hori S, Kobayashi K, Narumiya S. Transcatheter arterial chemoembolization with epirubicin-loaded superabsorbent polymer microspheres for 135 hepatocellular carcinoma patients: single-center experience. *Cardiovasc Intervent Radiol* 2011;34:557-565
 78. Dreher MR, Sharma KV, Woods DL, Reddy G, Tang Y, Pritchard WF, et al. Radiopaque drug-eluting beads for transcatheter embolotherapy: experimental study of drug penetration and coverage in swine. *J Vasc Interv Radiol* 2012;23:257-264.e4
 79. Spreafico C, Cascella T, Facciorusso A, Sposito C, Rodolfo L, Morosi C, et al. Transarterial chemoembolization for hepatocellular carcinoma with a new generation of beads: clinical-radiological outcomes and safety profile. *Cardiovasc Intervent Radiol* 2015;38:129-134
 80. Pua U. "Deploy and retrieve" technique using detachable micro-coil for temporary occlusion during drug-eluting beads chemoembolization. *Cardiovasc Intervent Radiol* 2015;38:1359-1362
 81. Todoroki W, Hirakawa M, Nagao E, Soeda H, Tsuruta S, Honda H. Transarterial chemoembolization for hepatocellular carcinoma using a new double-lumen microballoon catheter with a side hole. *J Vasc Interv Radiol* 2014;25:1485-1486
 82. Levy EB, Krishnasamy VP, Lewis AL, Willis S, Macfarlane C, Anderson V, et al. First human experience with directly imageable iodinated embolization microbeads. *Cardiovasc Intervent Radiol* 2016;39:1177-1186
 83. Aliberti C, Carandina R, Sarti D, Pizzirani E, Ramondo G, Cillo U, et al. Transarterial chemoembolization with DC Bead LUMI™ radiopaque beads for primary liver cancer treatment: preliminary experience. *Future Oncol* 2017;13:2243-2252
 84. Suk Oh J, Jong Chun H, Gil Choi B, Giu Lee H. Transarterial chemoembolization with drug-eluting beads in hepatocellular carcinoma: usefulness of contrast saturation features on cone-beam computed tomography imaging for predicting short-term tumor response. *J Vasc Interv Radiol* 2013;24:483-489
 85. Golowa YS, Cynamon J, Reinus JF, Kinkhabwala M, Abrams M, Jagust M, et al. Value of noncontrast CT immediately after transarterial chemoembolization of hepatocellular carcinoma with drug-eluting beads. *J Vasc Interv Radiol* 2012;23:1031-1035