



Development and Validation of HPLC-PDA Method and Pattern Recognition Analyses Using Eight Marker Compounds for the Quality Control Between the Seeds of *Cuscuta chinensis* Lam. and *Cuscuta japonica* Choisy

Duc Hung Nguyen^{1,2}, Bing Tian Zhao^{1,3}, Duc Dat Le^{1,4,5}, Eun Sook Ma¹, Byung Sun Min¹, and Mi Hee Woo^{1,*}

¹College of Pharmacy, Drug Research and Development Center, Daegu Catholic University, Gyeongsan 38430, Republic of Korea

²Faculty of Medicine and Pharmacy, Thanh Dong University, Hai Duong city, Viet Na.

³School of Chemical and Material Engineering, Jiangnan University, Wuxi 214122, China

⁴Division of Computational Physics, Institute for Computational Science, Ton Duc Thang University, Ho Chi Minh City, Vietnam.

⁵Faculty of Pharmacy, Ton Duc Thang University, Ho Chi Minh City, Vietnam.

Abstract – *Cuscuta chinensis* Lam. and *Cuscuta japonica* Choisy are parasitic plants. *C. chinensis* seeds were traditionally used for treatment of kidney and liver deficiencies. *C. japonica* seeds were used as tonic medicine to improve liver function and strengthen kidneys, treatment of high blood pressure, chronic diarrhea, and sore eyes. Cuscutae Semen are seeds of only *C. chinensis* in Korean Herbal Pharmacopoeia (K.H.P.). The developed HPLC-PDA method easily, accurately, and sensitively quantified using eight marker compounds [hyperoside (1), astragaloside (2), quercetin (3), kaempferol (4), chlorogenic acid (5), 3,4-di-*O*-caffeoylquinic acid (6), 1,5-di-*O*-caffeoylquinic acid (7), and 4,5-di-*O*-caffeoylquinic acid (8)]. In addition, the method may be used to distinguish seeds between *C. chinensis* Lam. and *C. japonica* Choisy. Furthermore, the result from the current study was applied to clarify samples between steam processed and unprocessed samples of *C. chinensis* by pattern analysis.

Keywords – *Cuscuta chinensis*, *Cuscuta japonica*, Flavonoids, Caffeoylquinic acid, HPLC-PDA

Introduction

Cuscuta chinensis Lam. is a parasitic plant belonging to the Convolvulaceae family. It is widely distributed in Korea, China, Japan, and Africa.¹ Stems are yellow and thin. Seeds were pale brown, ovoid, scabrous, and diameter of 1 - 3 mm. It was traditionally used as a medicine for the treatment of kidney and liver deficiency.² In addition, pastes of this plant are used to treat chronic ulcer, wounds, painful inflammation, sore head, and inflamed eyes.¹ In Korea and Vietnam, seeds of *C. chinensis* are applied for sexual function, health, and back pain.³ Several studies reported that *C. chinensis* possesses various biological activities such as hepatoprotective, anti-osteoporotic,⁴ neuroprotection,⁵ antioxidant,⁶ anti-aging,⁷ anti-cancer, and anti-diabetic activities.⁸ Chemical constituents of *C. chinensis* are reported as flavonoids, alkaloids, steroids, fatty acid, volatile oils, lignans, quinic acid

derivatives and polysaccharides.⁹ Flavonoids, a large group in natural products, reveal various pharmacological activities. Some flavonoids in this plant such as kaempferol, hyperoside, astragaloside, and quercetin relate to the mechanism of clinical effects. Therefore, main flavonoid components in this plant would be interesting in determining its quality evaluation.

C. japonica Choisy is a typical dodder with yellowish vines or purplish spots, lightly tout. Seeds were brown with ovoid capsule and 3 - 5 mm in diameter. They were used as tonic medicine to improve liver function and strengthen kidneys, treatment of high blood pressure, chronic diarrhea, and sore eyes. In the Korean herb market, there are confused uses of seeds of *C. japonica* as Cuscutae Semen because it is difficult to distinguish dried seed specimens between *C. chinensis* and *C. japonica*. However, Cuscutae Semen in K.H.P. are seeds of only *C. chinensis*. Different species, environmental conditions, and locations lead to differences in chemical constituents and pharmacological properties.¹⁰ Therefore, an effective characterization method for quality control of seeds between *C. chinensis* and *C. japonica* is desirable. Until

*Author for correspondence

Mi Hee Woo, College of Pharmacy, Drug Research and Development Center, Daegu Catholic University, Gyeongsan 38430, Republic of Korea

Tel: +82-53-850-3620; Email: woomh@cu.ac.kr

now, there are few studies on quantitative constituents in *C. chinensis* as well as *C. japonica*. Therefore, in this study, we describe development of the analysis method to simultaneously determine eight marker compounds with simple, rapid, and accurate analysis by reversed phase liquid chromatography in *C. chinensis* and *C. japonica* samples.

Experimental

Chemicals and reagents – Unless specified, all reagents used were of analytical grade. The standards were purchased from Sigma-Aldrich Chemical Co. (St. Louis, MO, USA). The standard compound structures are shown in Fig. 1. Acetonitrile (ACN) was purchased from Fisher Scientific Korea Ltd. Water was purified using a Milli-Q system (Millipore, Bedford, USA).

Plant material collection – The seeds of *C. chinensis* (C01 to C06) and *C. japonica* (J07 to J12) were identified and authenticated by Prof. Byung Sun Min. The voucher specimens (C.2017001 to C.2017012) of the samples were deposited in Herbarium at College of Pharmacy,

Daegu Catholic University, Korea.

Standard solution – Standard stock solutions were prepared separately for each analytical standard and an internal standard (IS) in 2 mL MeOH at 1000 µg/mL and diluted with MeOH to obtain appropriate concentrations for content determination. The solutions were transferred to 10 mL amber glass vials, sealed using elastic plastic film (Parafilm, Chicago, IL, USA) and stored in a refrigerator (4 °C) for analysis.

Sample preparation – The dried seeds of *C. chinensis* was pulverized and passed through a 180 mesh sieve. About 1 g of the powder, accurately weighed, were added to 40 mL of 75% methanol containing an internal standard (IS: 20 ppm caffeic acid) by sonication for 60 minutes. After extraction, each sample solution was adjusted to the original volume and filtered through 0.45 µm membrane, and an aliquot (10 µL) of the filtrate was injected into HPLC.

HPLC analyses – The HPLC experiments were performed using a Waters Alliance system (Waters, Houston, TX, USA) equipped with a vacuum degasser, PDA detector and an Aegispak C18-L (250 mm × 4.6 mm, 5

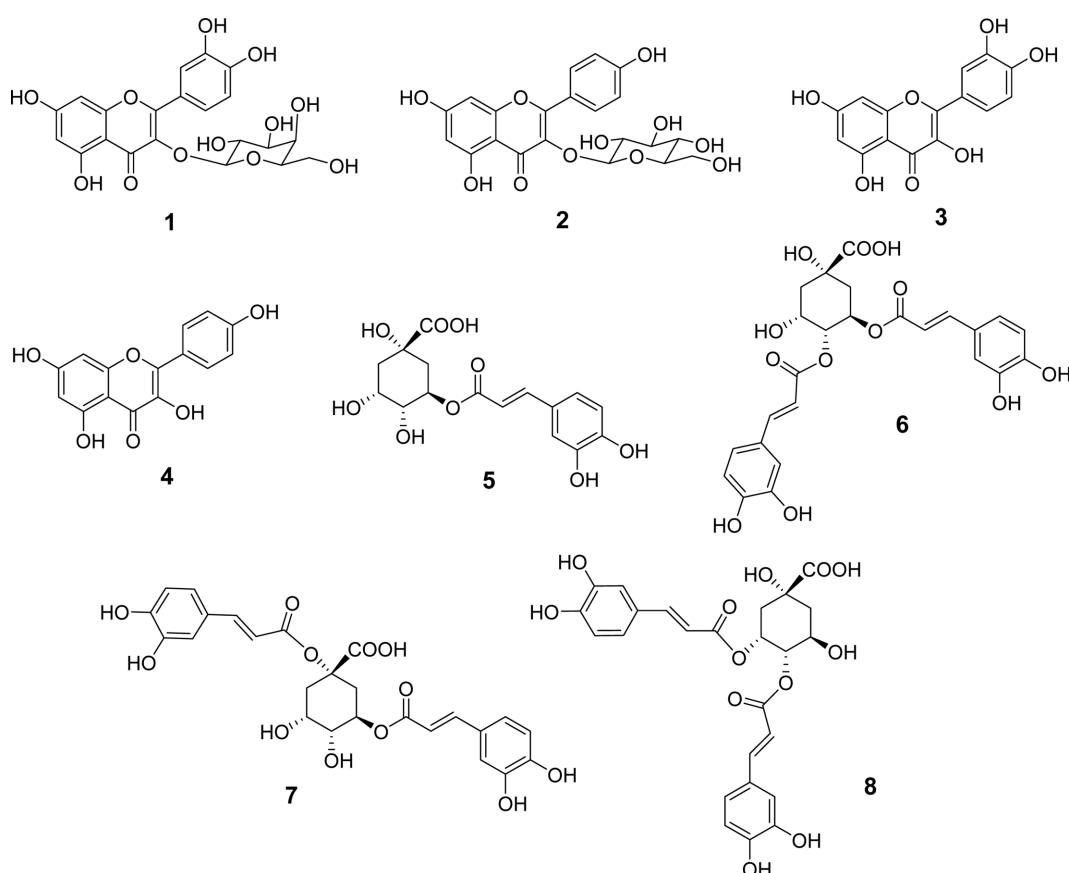


Fig. 1. The structures of marker compounds (1 - 8) of *C. chinensis* and *C. japonica* samples.

μm) column. Data handling was managed by Empower v.3.0 software.

HPLC instrument and chromatographic conditions – HPLC-PDA analyses were performed on a Waters (Houston, TX, USA) equipped with an autosampler, degasser, quaternary solvent pump, and PDA detector (Waters 2998) scanning in the wavelength range of 190–400 nm. Separation was carried out on an Aegispak C18-L column (4.6×250 mm, $5 \mu\text{m}$ particle size; Young JinBiochrom, Korea). UV detection was recorded at the wavelengths of 349 nm. The mobile phase consisted of solvent A (H_2O containing 0.3% formic acid) and solvent B (acetonitrile), and gradient elution profile was conducted as follows: 0–30 min, 17% B; 30–50 min, 17–55% B. The flow rate for mobile phase was set at 1 mL/min and the injection volumes were 10 μL .

Method validation – The analytical method for the seeds of *C. chinensis* was validated by the determination of linearity, limit of detection (LOD) and limit of quantitation (LOQ), accuracy, precision, stability, and robustness.¹¹

Linearity – Eight marker compounds were accurately weighed and dissolved in methanol 1000 $\mu\text{g/mL}$ as stock solutions. The stock solutions were then diluted to produce different concentrations for each marker. Linearity was determined by plotting the measurements of area peak ratios (analyte/IS) versus concentrations of analytical standards. The sensitivity was expressed by the LOD and LOQ. The LOD represents the lowest concentration that can be reliably determined at a signal-to-noise (S/N) ratio of 3. The estimate for the LOQ was calculated using S/N ratio of 10.

Accuracy and Precision – Intra-day ($n=5$) and inter-day ($n=5$) precisions and accuracies were evaluated by analyzing sets of five independent samples at the low, mid, and high concentration levels. The precision was expressed as RSD% and the accuracy was expressed as bias. The stability of marker compounds was analyzed by the sample solution of aerial parts of *C. chinensis* through storing extract solution in the dark at 4°C and at room temperature (25°C). The two samples were analyzed in triplicate at 0, 1, 3, 7, 15, and 30 days separation.¹²

Pattern recognition analysis – The determination of the phytotaxonomic or phytochemical relationship of 12 samples [six *C. chinensis* Lam. (C01–C06) and six *C. japonica* Choisy (J07–J12)], pattern recognition analysis was conducted using software IBM SPSS Statistics Version 22.

Optimized method – A gradient RP-C18 HPLC system was performed for the simultaneous quantitative

determination of eight compounds: hyperoside (**1**), astragaloside (**2**), quercetin (**3**), kaempferol (**4**), chlorogenic acid (**5**), 3,4-di-*O*-caffeoylquinic acid (**6**), 1,5-di-*O*-caffeoylquinic acid (**7**), and 4,5-di-*O*-caffeoylquinic acid (**8**) in extracts from *C. chinensis* and *C. japonica* seeds. These compounds showed a high UV absorption at 360 nm, therefore this wavelength was used for their quantitative determination. Mixtures of ACN (B) and water containing 0.3% formic acid (A) were examined as the mobile phases, with different ratios as well as a gradient elution system were optimized. The most suitable gradient elution system was 0–30 min, 17% (B); 30–50 min, 17–55% (B), v/v. The chromatographic peaks of the markers in the sample solution were determined by comparing their retention times with those of the individual standards, and were confirmed by spiking the samples with the individual compounds. Compounds (**1–4**) appeared in the chromatograms of *C. chinensis* samples, meanwhile compound (**5–8**) appeared in those of *C. japonica* samples (Fig. 2). The resolutions of all marker compounds in this chromatogram are much better and clearer than the previous report.¹³

Optimized extract – Extraction process was optimized by using methanol-water and ethanol-water with different ratios. In this study, the seeds of *C. chinensis* and *C. japonica* were grinded for 5 min and were then sieved through a $250 \mu\text{m}^2$ sieve.¹² The various solvent systems of ethanol-water mixtures (95%, 75%, 50%, 25%) and methanol-water (100%, 75%, 50%, 25%) were used to analysis of the *C. chinensis* and *C. japonica* samples to maximize recovery of all markers. The *C. chinensis* and *C. japonica* samples (each sample, 1.0 g) were extracted with 40 mL of above solvents for 60 min at room temperature in an ultrasonic bath. As a result, 75% aqueous methanol was selected as extract solvent system for *C. chinensis* and *C. japonica* samples due to the greatest peak areas of the markers **1–4** and **5–8** in their extraction, respectively. Similarly, the ultra-sonication was selected due to their higher area peaks in ultra-sonication than those of the reflux. To evaluate the optimized extraction times, five period times (30, 45, 60, 75, and 90 min) were examined in 75% methanol *via* sonication at room temperature. The results showed that each area peak of analytes was not increased from 60 min. Therefore, the extraction time was optimized as 60 min.

Analytical method validation – The linearity was evaluated by using seven different concentrations of each analyte (0.625, 6.25, 12.5, 25, 50, 100, and 200 $\mu\text{g/mL}$) for *C. chinensis* sample and (0.625, 6.25, 12.5, 25, 50, 100, 200, and 500 $\mu\text{g/mL}$) for *C. japonica* sample and in

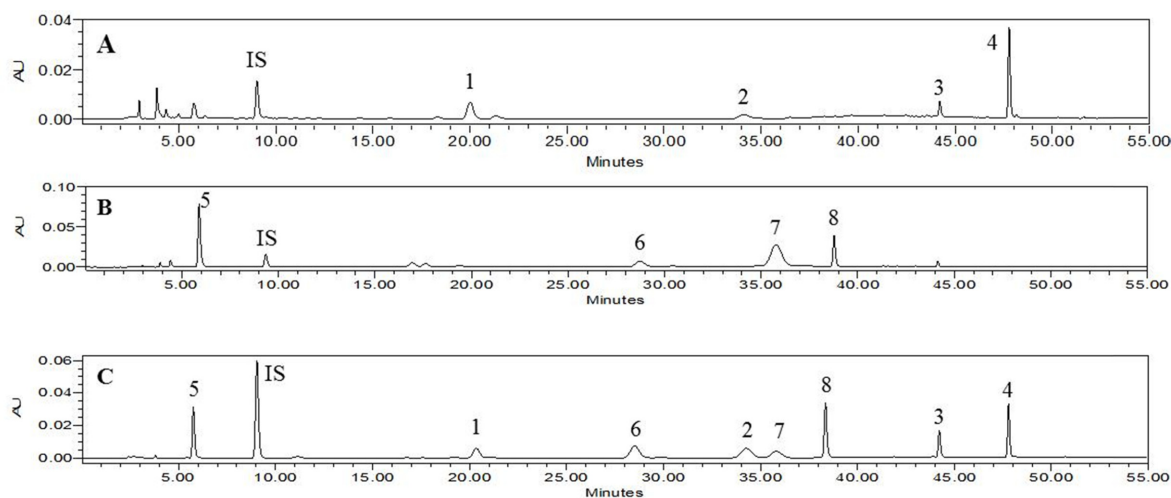


Fig. 2. The HPLC chromatograms of *C. chinensis* (A) and *C. japonica* (B) samples and the standard mixture (C). Hyperoside (1), astragalalin (2), quercetin (3), kaempferol (4), chlorogenic acid (5), 3,4-di-*O*-caffeoylquinic acid (6), 1,5-di-*O*-caffeoylquinic acid (7), 4,5-di-*O*-caffeoylquinic acid (8), and an internal standard (IS, caffeic acid).

Table 1. The linearity, linear range, LOD, and LOQ

Analytes	Linear range (µg/mL)	Slope	Intercept	Correlation coefficient (r^2)	LOD (µg/mL)	LOQ (µg/mL)
1	0.625 - 200	0.0931	0.3222	0.9991	0.015	0.051
2	0.625 - 200	0.0705	0.1806	0.9991	0.020	0.069
3	0.625 - 200	0.1181	0.2140	0.9994	0.013	0.043
4	0.625 - 200	0.1957	0.2824	0.9998	0.006	0.023
5	0.625 - 500	0.0297	0.0750	0.9994	0.057	0.190
6	0.625 - 500	0.0301	0.0763	0.9994	0.086	0.288
7	0.625 - 500	0.0381	0.0594	0.9996	0.045	0.151
8	0.625 - 500	0.0585	0.1204	0.9991	0.031	0.104

triplicate analysis. The calibration curves of each analyte showed excellent linearity over the tested range ($r^2 > 0.9991$) (Table 1). The LOD of each analyte was determined to be 0.006 to 0.086 µg/mL and the LOQ was 0.023 to 0.288 µg/mL indicating that the developed method for the seeds of *C. chinensis* and *C. japonica* exhibited good sensitivity for determination of these marker compounds. The accuracy of the developed HPLC method was determined by analyzing the known amounts at the three different concentrations (each analyte: 1, 50, and 200 µg/mL) of analytes spiked into 75% methanol extract solution of the seeds of *C. chinensis* (marker compounds: 1 - 4) and *C. japonica* (marker compounds: 5 - 8). After addition of known amounts of each analyte to the previous 75% methanol extract solution, recovery studies were carried out. The results were listed in Table 2. In *C. chinensis* and *C. japonica* samples, the precisions for marker compounds (1 - 8) were less than 12.61% in intra-day and 13.25% in inter-day. The accuracies of the

method were in the range 87.82 - 107.48% in intra-day and 87.02 - 111.13% in inter-day. With above data, the method developed was precise, accurate, and reliable for quantitation analysis of the two species (*C. chinensis* and *C. japonica*).

Stability of marker compounds – To evaluate the stability of the analytes, the 75% methanol extract solution of *C. chinensis* and *C. japonica* samples at room temperature (25 °C) and 4 °C were measured at 0, 1, 3, 7, 15, and 30 days. As the results, the marker compounds (1 - 8) showed stable with recovery ranging from 98.1 to 101.6% (Table 3).

Quantitation of eight marker compounds (1 - 8) in 75% methanol extract of *C. chinensis* Lam. and *C. japonica* Choisy – The contents of each analyte present in each sample (*C. chinensis* and *C. japonica*) were listed in Table 4, in which C01 - C03 samples of *C. chinensis* samples were steam processed. Two main analytes, compounds 1 and 4, were found in *C. chinensis* samples

Table 2. Intra- and inter-day precisions of the eight marker compounds in 75% MeOH extract of *C. chinensis* (1 - 4) and *C. japonica* (5 - 8)

Analyte	Fortified conc. (µg/mL)	Sample conc. (µg/mL)	Intra-day (n = 5)				Sample conc. (µg/mL)	Inter-day (n = 5)			
			Observed (µg/mL)	SD	Accuracy (%)	Precision (%)		Observed (µg/mL)	SD	Accuracy (%)	Precision (%)
1	1	7.39	8.47	0.15	107.48	7.30	7.39	8.42	0.11	103.63	10.96
	50	7.39	58.18	0.80	101.58	1.61	7.39	57.55	1.01	100.33	2.04
	200	7.39	208.53	1.92	100.57	0.96	7.39	209.89	2.23	101.25	1.11
2	1	3.72	4.70	0.15	97.85	5.36	3.72	4.81	0.10	109.10	8.35
	50	3.72	53.20	0.56	98.95	1.12	3.72	53.06	0.30	98.67	0.60
	200	3.72	200.20	2.81	98.24	1.12	3.72	203.64	2.21	99.96	1.11
3	1	1.70	2.56	0.14	96.00	10.96	1.70	2.53	0.12	87.02	12.64
	50	1.70	51.65	2.16	99.90	4.32	1.70	52.36	1.59	101.40	3.18
	200	1.70	201.62	2.54	99.65	1.27	1.70	200.84	2.72	99.59	1.35
4	1	7.15	8.37	0.23	89.16	10.96	7.15	8.23	0.18	107.66	13.25
	50	7.15	53.11	2.23	99.77	4.45	7.15	57.24	1.39	100.17	2.78
	200	7.15	201.85	3.47	99.54	1.73	7.15	208.33	1.40	100.59	0.70
5	1	95.11	96.10	0.13	99.54	11.59	95.11	96.05	0.18	94.24	12.19
	50	95.11	144.72	1.49	99.22	2.99	95.11	145.05	1.46	99.87	2.91
	200	95.11	296.58	1.55	100.73	0.77	95.11	296.18	1.53	100.53	0.76
6	1	10.78	11.66	0.19	87.82	12.61	10.78	11.80	0.12	101.57	11.71
	50	10.78	60.71	1.23	99.86	2.47	10.78	59.88	0.78	98.19	1.55
	200	10.78	211.44	3.23	100.33	1.61	10.78	210.51	4.78	99.86	2.38
7	1	120.32	121.56	0.08	98.52	8.47	120.32	121.66	0.27	104.37	2.11
	50	120.32	171.10	1.81	101.56	3.62	120.32	170.72	1.77	100.79	3.53
	200	120.32	320.95	1.43	100.31	0.71	120.32	321.31	2.07	100.49	1.03
8	1	13.80	14.98	0.13	111.91	8.04	13.80	15.31	0.26	111.13	8.62
	50	13.80	64.52	0.44	101.44	0.87	13.80	64.58	0.62	101.54	1.24
	200	13.80	212.91	1.63	99.55	0.81	13.80	212.72	1.63	99.45	0.81

Table 3. Stability of marker compounds (1 - 8) in *C. chinensis* and *C. japonica* samples

Compound	Temperature (°C)	Day (%)						Mean	RSD (%)
		0	1	3	7	15	30		
1	4	100	100.1	101.2	101.2	97.7	99.4	99.9	1.4
	25	100	100.6	100.2	100.5	99.8	99.0	100.0	0.6
2	4	100	103.4	100.9	100.4	99.3	98.8	100.6	1.8
	25	100	104.4	105.8	98.6	100.5	98.7	101.6	3.3
3	4	100	101.2	98.9	99.6	98.4	97.1	99.04	1.5
	25	100	97.9	98.6	99.8	100.6	98.6	99.1	1.1
4	4	100	100.3	100.7	98.6	96.5	98.1	98.8	1.7
	25	100	99.2	98.3	100.6	97.6	96.5	98.4	1.6
5	4	100	99.2	101.3	99.6	98.5	98.4	99.4	1.1
	25	100	99.6	99.0	100.2	98.5	97.0	98.7	1.2
6	4	100	100.1	98.1	100.7	99.9	99.6	99.7	1.0
	25	100	100.7	99.6	98.1	100.1	99.7	99.6	0.9
7	4	100	100.5	99.5	99.8	99.8	99.8	99.9	0.4
	25	100	100.1	99.9	99.9	98.8	98.6	99.5	0.7
8	4	100	95.9	101.3	99.3	97.0	97.0	98.1	2.2
	25	100	97.5	100.7	97.2	97.6	96.4	97.9	1.6

with the average values of 0.0138 and 0.039% on dry weight basis, respectively. Meanwhile, compounds **5** - **8** were not shown in their chromatogram (Fig. 2). The peak of compound **3** appeared in the chromatogram of steam processed samples C01 - C03. But, it was not detected in that of not-steamed samples C04 - C06. The contents of hyperoside in steam processed *C. chinensis* samples C01 - C03 (0.0153 - 0.0295%) were much greater than those of unprocessed samples C04 and C05 (0.0029 and 0.0065%) (Table 4).

Results and Discussion

A gradient RP-C18 HPLC system was conducted for simultaneous quantitative determination of eight compounds: hyperoside (**1**), astragalins (**2**), quercetin (**3**), kaempferol (**4**), chlorogenic acid (**5**), 3,4-di-*O*-caffeoylquinic acid (**6**), 1,5-di-*O*-caffeoylquinic acid (**7**), and 4,5-di-*O*-caffeoylquinic acid (**8**) in extracts from *C. chinensis* and *C. japonica* seeds. Contents of each analyte present in each sample (*C. chinensis* and *C. japonica*) were listed in Table S5. Samples C01 - C03 from *C. chinensis* were steam processed. Two main analytes, compounds **1** and **4**, were in *C. chinensis* samples with average values of 0.0138 and 0.039% on dry weight basis, respectively. Meanwhile, compounds **5** - **8** were not in their chromatogram. Content of hyperoside in steamed *C. chinensis* samples C01 - C03 (0.0153-0.0295%) was much greater than those of conventional samples C04 and C05 (0.0029 - 0.0065%). A gradient RP-C18 HPLC system was performed

for the simultaneous quantitative determination of eight compounds: hyperoside (**1**), astragalins (**2**), quercetin (**3**), kaempferol (**4**), chlorogenic acid (**5**), 3,4-di-*O*-caffeoylquinic acid (**6**), 1,5-di-*O*-caffeoylquinic acid (**7**), and 4,5-di-*O*-caffeoylquinic acid (**8**) in the extracts from *C. chinensis* and *C. japonica* seeds.

The contents of each analyte present in each sample (*C. chinensis* and *C. japonica*) were listed in Table 4. Samples C01 - C03 from *C. chinensis* were steam processed. Two main analytes, compounds **1** and **4**, were found in *C. chinensis* samples with the average values of 0.0138 and 0.039% on dry weight basis, respectively. Meanwhile, compounds **5** - **8** were not shown in their chromatogram (Fig. 2). The content of hyperoside in steam processed samples of *C. chinensis* C01 - C03 (0.0153 - 0.0295%) were much greater than those of unprocessed samples C04 and C05 (0.0029 and 0.0065%) (Table 4). In *C. japonica* samples, compounds **5** and **7** were major constituents with average values of 0.3274 and 0.2563% (w/w), respectively. Interestingly, compounds **1** - **4** were not revealed in their chromatogram. Therefore, this developed method may be easily and accurately used to distinguish between *C. chinensis* and *C. japonica*. Cluster analysis of 12 samples was conducted on SPSS software using contents of seven marker components [hyperoside (**1**), astragalins (**2**), quercetin (**3**), kaempferol (**4**), chlorogenic acid (**5**), 3,4-di-*O*-caffeoylquinic acid (**6**), 1,5-di-*O*-caffeoylquinic acid (**7**), 4,5-di-*O*-caffeoylquinic acid (**8**)]. Two species of *C. chinensis* Lam. and *C. japonica* Choisy were unambiguously distinguished by two different

Table 4. The contents (wt%) of **1** - **8** in *C. chinensis* (C01 - C06) and *C. japonica* (J07 - J12) samples

Samples	Compounds								Species
	1	2	3	4	5	6	7	8	
C01 ^a	0.0295	0.0148	0.0034	0.0286	ND	ND	ND	ND	<i>C. chinensis</i> samples
C02 ^a	0.0153	0.0171	0.0007	0.0183	ND	ND	ND	ND	
C03 ^a	0.0244	0.0336	0.0028	0.0354	ND	ND	ND	ND	
C04	0.0029	0.1261	ND	0.0278	ND	ND	ND	ND	
C05	0.0065	0.0340	ND	0.0021	ND	ND	ND	ND	
C06	0.0045	0.0085	ND	0.0000	ND	ND	ND	ND	
Average	0.0138	0.039	0.0012	0.0187					
J07	ND	ND	ND	ND	0.3801	0.0422	0.3242	0.0552	<i>C. japonica</i> samples
J08	ND	ND	ND	ND	0.5736	0.1770	0.4514	0.1323	
J09	ND	ND	ND	ND	0.1087	0.0487	0.0315	0.0495	
J10	ND	ND	ND	ND	0.4317	0.1277	0.3573	0.1103	
J11	ND	ND	ND	ND	0.1230	0.0501	0.0551	0.0591	
J12	ND	ND	ND	ND	0.3474	0.0730	0.3183	0.0655	
Average					0.3274	0.0864	0.2563	0.0786	

^aC01 - C03 samples were steam processed.

ND: not detect.

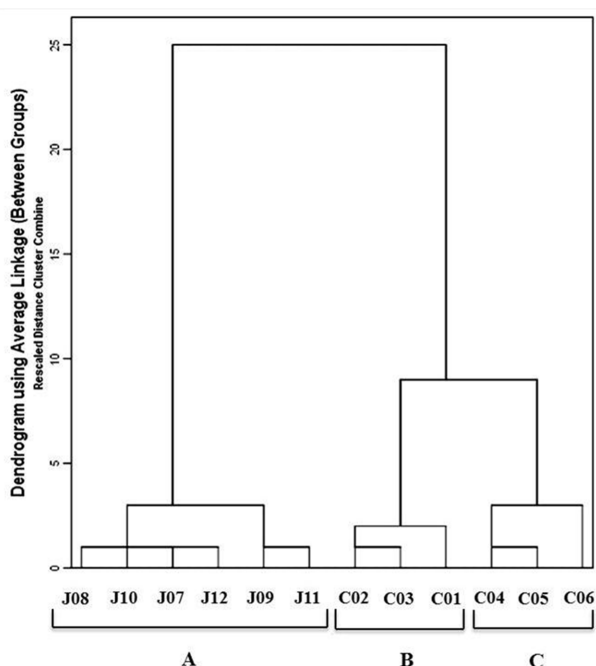


Fig. 3. The cluster analysis of *C. chinensis* and *C. japonica* seed samples using the contents of eight marker compounds (1 - 8). *C. japonica* seed samples (J07 - J12, **A**), *C. chinensis* steam processed (C01 - C03, **B**) and *C. chinensis* unprocessed seed samples (C04 - C06, **C**).

groups. In addition, two clusters of *C. chinensis* steam processed (C01–C03) and unprocessed samples (C04–C06) were also separated by the dendrogram (Fig. 3).

In conclusion, eight marker compounds (1 - 8) were identified in the *C. chinensis* and *C. japonica* samples. Particularly, development of the reliable HPLC-PDA method simultaneously quantitate eight marker compounds [hyperoside (1), astragalin, (2), quercetin (3), kaempferol (4), chlorogenic acid (5), 3,4-di-*O*-caffeoylquinic acid (6), 1,5-di-*O*-caffeoylquinic acid (7), 4,5-di-*O*-caffeoylquinic acid luteolin (8), an internal standard (caffeic acid). Results indicated that the method was applied for the quality evaluation of seeds between the *C. chinensis* and *C. japonica*.

Acknowledgments

This work was supported by the sabbatical research grant from Daegu Catholic University in 2018.

Conflict of Interest – The authors declare no conflict of interest.

References

- (1) Donnapee, S.; Li, J.; Yang, X.; Ge, A. H.; Donkor, P. O.; Gao, X. M.; Chang, Y. X. *J. Ethnopharmacol.* **2014**, *157*, 292-308.
- (2) He, X. H.; Yang, W. Z.; Meng, A. H.; He, W. N.; Guo, D. A.; Ye, M. *J. Asian. Nat. Prod. Res.* **2010**, *12*, 934-939.
- (3) Sam, H. V.; Baas, P.; Kebler, P. J. A. *Blumea* **2008**, *53*, 569-601.
- (4) Zhen, G. H.; Jiang, B.; Bao, Y. M.; Li, D. X.; An, L. J. *J. Chin. Med. Mat.* **2006**, *29*, 1051-1055.
- (5) Liu, J.; Jiang, B.; Bao, Y.; An, L. *Int. J. Dev. Neurosci.* **2003**, *21*, 277-281.
- (6) Yen, F. L.; Wu, T. H.; Lin, L. T.; Lin, C. C. *J. Ethnopharmacol.* **2007**, *111*, 123-128.
- (7) Yao, C. H.; Tsai, H. M.; Chen, Y. S.; Liu, B. S. *J. Biomed. Mater. Res. B. Appl. Biomater.* **2005**, *75B*, 277-288.
- (8) Chauhan, A.; Sharma, P. K.; Srivastava, P.; Kumar, N.; Dudhe, R. *Pharm. Lett.* **2010**, *2*, 369-387.
- (9) Cheng, P.; Shi, J.; Du, P.; Liu, D.; Cao, X.; Wen, X. *Academic Periodical of Farm Products Processing.* **2013**, *8*, 116-118.
- (10) Liao, G. I.; Chen, M. Y.; Kuoh, C. S. *Bot. Bull. Acad. Sin.* **2005**, *46*, 75-81.
- (11) Araujo P. *J. Chromatogr. B Analyt. Technol. Biomed. Life Sci.* **2009**, *877*, 2224-2234.
- (12) Le, D. D.; Nguyen, D. H.; Zhao, B. T.; Min, B. S.; Song, S. W.; Woo, M. H. *Nat. Prod. Sci.* **2019**, *25*, 122-129.
- (13) Hajimehdipoor, H.; kondori, B. M.; Amin, G. R.; Adib, N.; Rastegar, H.; Shekarchi, M. *Daru.* **2012**, *20*, 57-63.

Received July 18, 2019

Revised October 24, 2019

Accepted October 25, 2019