

Identification of Differentially Expressed Genes by cDNA-AFLP in *Magnaporthe oryzae*

*Corresponding author

Tel: +82-61-750-3868

Fax: +82-61-750-3868

E-mail: spark@scnu.ac.kr

ORCID

<https://orcid.org/0000-0003-1267-1111>

Myoung-Hwan Chi¹ and Sook-Young Park^{2*} 

¹Plant Biology Division, Noble Research Institute, Ardmore, OK 73401, USA

²Department of Plant Medicine, Sunchon National University, Suncheon 57922, Korea

Received November 24, 2019

Revised December 10, 2019

Accepted December 10, 2019

Analysis of differentially expressed genes has assisted discovery of gene sets involved in particular biological processes. The purpose of this study was to identify genes involved in appressorium formation in the rice blast fungus *Magnaporthe oryzae* via analysis of cDNA-amplified fragment length polymorphisms. Amplification of appressorial and vegetative mycelial cDNAs using 28 primer combinations generated over 200 differentially expressed transcript-derived fragments (TDFs). TDFs were excised from gels, re-amplified by PCR, cloned, and sequenced. Forty-four of 52 clones analyzed corresponded to 42 genes. Quantitative real-time PCR showed that expression of 23 genes was up-regulated during appressorium formation, one of which was the *MCK1* gene that had been shown to be involved in appressorium formation. This study will be providing valuable resources for identifying the genes such as pathogenicity-related genes in *M. oryzae*.

Keywords: Appressorium formation, cDNA-AFLP, Gene expression, *Magnaporthe oryzae*, qRT-PCR

Rice blast, caused by *Magnaporthe oryzae*, is the most devastating disease in rice worldwide (Ebbole, 2007) and destroys 10–30% of rice production annually (Talbot, 2003). As over half of the global human population depends on rice as staple food (Strange and Scott, 2005), intensive research has been conducted to understand its mechanism of pathogenicity towards the goal of developing effective control strategies for the rice blast.

The infection of rice by *M. oryzae* is initiated by conidial attachment on host surfaces followed by conidial germination. Via recognition of physical cues on the rice surface, such as hydrophobicity and surface hardness, emerging germ tubes initiate formation of a specialized infection structure, called the appressorium, within 4–6 hours (Hamer and Talbot, 1998; Howard and Valent, 1996). The appressorium is a dome-shaped cell that enables the fungus to penetrate the

rice leaf surface. Enormous turgor pressure (8 MPa) builds up inside the melanized appressorium due to high glycerol concentration, which drives penetration of the plant surface. After successful infection of plant tissues, visible symptoms appear rapidly. Over two decades of research has unequivocally established the involvement of several signaling pathways, including the cyclic AMP-dependent (Adachi and Hamer, 1998; Lee and Dean, 1993; Mitchell and Dean, 1995; Xu and Hamer, 1996), calcium-dependent (Choi et al., 2009a, 2009b; Liu and Kolattukudy, 1999; Nguyen et al., 2008), and mitogen-activated protein (MAP) kinase signaling pathways (Hamer and Talbot, 1998; Jeon et al., 2008; Soanes et al., 2012; Thines et al., 2000; Xu and Hamer, 1996) in appressorium differentiation.

One notable advantage that has facilitated studies on appressorium differentiation is the possibility to induce appressorium formation on artificial hydrophobic surface as well as hydrophilic surfaces in the presence of cAMP (Lee and Dean, 1993). Multiple approaches have been deployed to identify genes important in *M. oryzae* appressorium devel-

Research in Plant Disease

pISSN 1598-2262, eISSN 2233-9191

www.online-rpd.org

opment, including suppression subtractive hybridization (Lu et al., 2005), super serial analysis of gene expression (Irie et al., 2003; Soanes et al., 2012), expressed sequence tag analysis (Oh et al., 2008), and RNA-sequencing (Soanes et al., 2012). Identification of genes expressed in appressoria via such approaches and subsequent functional analysis of identified genes via mutagenesis have helped understand the molecular mechanism underpinning the initiation and maturation of *M. oryzae* appressorium. Even though a large number of genes involved in appressorium differentiation have been identified via functional validation, many more genes likely remain to be identified.

In this study, we applied cDNA-amplified fragment length polymorphisms (cDNA-AFLP) analysis (Park et al., 2009) to identify and characterize the function of selected genes using the previously constructed ATMT mutant library (Jeon et al., 2007).

M. oryzae strain KJ201 (wild-type) was obtained from the Centre for Fungal Genetic Resources at Seoul National University, Seoul, Korea. All fungal isolates were grown on V8-juice agar (8% V8 juice, pH 6.8) or oatmeal agar (5% oatmeal [w/v], 2% agar [w/v]) at 25°C under constant light to promote conidial production. The wild-type and ATMT mutants were cultured on complete agar medium, minimal agar medium, C starvation medium, and N starvation medium to observe mycelial growth and colony characteristics (Talbot et al., 1997).

Total RNA was isolated from appressoria, formed on hydrophobic glass for 4–6 hr, and mycelia cultured in complete liquid medium. Extracted RNA (5 µg) was used to produce random primed cDNA with the Prom-III Reverse Transcription System (Promega, Madison, WI, USA). Three independent experiments were performed.

This analysis was performed as previously described (Park et al., 2009). cDNA (200 ng) was digested with *EcoRI* and *MspI* and ligated to *EcoRI* and *MspI* double strand adapters (Park et al., 2009). The products were diluted (50×) with TE buffer and 5 µl were used for selective amplification, using 36 cycles that include 13 touchdown cycles comprising a reduction of the annealing temperature from 65°C to 56°C in 0.7°C steps, which were subsequently maintained for 23 cycles. A total of 28 primer combinations (Table 1) were used for selective amplification as previously described (Park et al., 2009).

Bands of interest were selected, excised from the gel, and re-amplified as previously described (Park et al., 2009). PCR

Table 1. Primers used for cDNA-AFLP

Selective primer	5'-3'
<i>EcoRI</i> -0	GAC TGC GTA CCA ATT C
<i>EcoRI</i> -AGG	GAC TGC GTA CCA ATT CAG G
<i>EcoRI</i> -CAC	GAC TGC GTA CCA ATT CCA C
<i>EcoRI</i> -CAG	GAC TGC GTA CCA ATT CCA G
<i>MspI</i> -0	GAT GAG TCC TGA GCG G
<i>MspI</i> -C	GAT GAG TCC TGA GCG GC
<i>MspI</i> -CT	GAT GAG TCC TGA GCG GCT
<i>MspI</i> -CTC	GAT GAG TCC TGA GCG GCT C
<i>MspI</i> -CTCA	GAT GAG TCC TGA GCG GCT CA
<i>MspI</i> -CTG	GAT GAG TCC TGA GCG GCT G
<i>MspI</i> -CTGC	GAT GAG TCC TGA GCG GCT GC

cDNA-AFLP, cDNA-amplified fragment length polymorphisms.

products were confirmed on 1.0% agarose gels. The amplified transcript-derived fragments (TDFs) were cloned into the plasmid pGEM-T Easy vector system I (Promega). Sequencing of cloned TDFs was conducted on an Applied Biosystems sequencer (ABI3700, Applied Biosystems, Foster City, CA, USA).

Database searches were performed using the BLAST Network Service (NCBI, National Center for Biotechnology Information) and the Magnaporthe genome database (<http://www.broad.mit.edu/annotation/fungi/magnaporthe/>). To determine whether the genes derived from TDFs were orphan genes or had orthologs in other organisms, the BLAST Matrix program incorporated in CFGP (Park et al., 2008) and InParanoid algorithms (Remm et al., 2001) were used. We applied the cutoff e-value of less than 10^{-50} for protein similarity in BLAST Matrix searches and the InParanoid default parameters.

Quantitative real-time RT-PCR (qRT-PCR) was applied to measure transcript levels using specific primers (Table 2) and the conditions described previously (Park et al., 2013). All reactions were performed with three biological and three technical replicates for each sample. The *β-tubulin* gene was used as the internal control for normalization. All amplification curves were analyzed with a normalized reporter threshold of 0.1 to obtain the threshold cycle (Ct) values. The comparative $\Delta\Delta$ Ct method was applied to evaluate relative quantities of each amplified sample product. Fold changes were

calculated as $2^{-\Delta\Delta Ct}$ (Livak and Schmittgen, 2001). We applied a fold-change cutoff of ≥ 1.5 for up-regulation and ≤ 0.5 for down-regulation.

Isolation of differentially expressed TDFs. To isolate TDFs corresponding to differentially expressed genes during appressorium development in *M. oryzae*, cDNA-AFLP analysis was performed using RNAs extracted from appressorium-forming conidia on hydrophobic glass and vegetatively grown mycelia in complete liquid medium.

A total of 28 primer combinations were used (Table 1). Resulting fragments were ranged in size from 50 to 1,200 bp. Over 200 TDFs that appeared to be differentially expressed genes were detected. Each band was directly excised from the gel, eluted, and re-amplified using the same primer set. Among the 200 TDFs, 52 were successfully cloned and sequenced. In order to obtain more up-regulated or differentially expressed genes during appressorium development, additional primer combinations for cDNA-AFLP could be helpful.

Identification of up-regulated genes during appressorium formation. The GenBank nucleotide sequence database (<http://blast.ncbi.nlm.nih.gov/Blast>) and Magnaporthe database (<http://www.broad.mit.edu/annotation/fungi/magnaporthe/>) were queried using sequences of the 52 TDFs via the BLAST (Basic Local Alignment Search Tool) program. The majority (44 TDFs) matched to *M. oryzae* genes (Table 3). Based on blast search, we identified 42 independent genes that are likely associated with appressorium development. Among 44 TDFs, 2 TDFs are identical sequence to two TDFs which identified as MGG_01117T0 and MGG_15150T0, respectively.

The genes up-regulated during appressorium development included the following: homologues of the dynactin Arp1 P62 subunit RO2 (MGG_00222T0) (Lee et al., 2001), which regulates the activity of cytoplasmic dynein (a microtubule-associated motor); a gene encoding mitogen activated protein kinase kinase kinase3, *MCK1* (MGG_00883T0) (Jeon et al., 2008), which is an integral component of the MAP kinase signaling pathway that regulates cell wall integrity in *Saccharomyces cerevisiae* (Levin, 2005) and *M. oryzae* (Jeon et al., 2008); a gene homologous to *S. cerevisiae* *Git1* (MGG_00464T0), which encodes a permease involved in glycerophosphoinositol uptake (Patton-Vogt and Henry,

1998); beta-hexosaminidase (MGG_00621T0) homologue; a homologue of glycosylphosphatidylinositol-anchored extracellular cell wall glucanase *Crf1* of *Aspergillus fumigatus* (MGG_10431T0) (Arroyo et al., 2007); and a pp-loop family protein (MGG_17376T0) homologue (Table 3).

The genes specifically expressed during appressorium development also included a gene putatively encoding acetylglutamate synthase (MGG_01507T0), a gene involved in autophagy; ATG6 (MGG_03694T0), which encodes a protein that forms a membrane-associated complex with ATG14p in *S. cerevisiae* and is critical for *M. oryzae* pathogenicity; protein phosphatase 1K (MGG_03918T0); L-ornithine 5-monooxygenase *OMO1* (MGG_04212T0); cation efflux family protein (MGG_04407T0); potassium-activated aldehyde dehydrogenase (MGG_05814T0); nuclear cap-binding protein subunit2 (MGG_06296T0); transport protein SEC23 (MGG_06910T0); CCR4-NOT transcription complex (MGG_08101T0); XPG N-terminal domain-containing protein (MGG_08303T0); cystathionine gamma-lyase (MGG_10380T0); ceramide glucosyltransferase (MGG_10668T0); and DUF124 domain protein (MGG_11494) (Table 3).

Among the 42 genes, only seven (MGG_00222T0, MGG_00464T0, MGG_03694T0, MGG_04538T0, MGG_10380T0, MGG_11809T0, and MGG_15282T0) had already been identified in a previous study (Soanes et al., 2012). The remaining 35 genes were not previously captured in appressorial transcriptome studies in *M. oryzae* (Oh et al., 2008; Soanes et al., 2012). This low redundancy level compare to other previous transcriptome analysis (Oh et al., 2008; Soanes et al., 2012) might be due to one or more of the following differences among these experiments: (1) differences in experimental methods; (2) inductive surface and treatments for appressorium development; (3) time points for sample collection; (4) differences between strains used; and (5) *Magnaporthe* genome versions used.

To determine whether the 42 genes have orthologs in other species, we applied BLAST Matrix (<http://cftp.snu.ac.kr>) and InParanoid (Remm et al., 2001) to detect orthologs (Fig. 1). We found 5 genes (MGG_14593T0, MGG_15150 T0, MGG_14683 T0, MGG_14684 T0, and MGG_14741 T0) were *M. oryzae*-specific, based on the absence of orthologs in other species (BLAST $E < 10^{-50}$ and InParanoid) (Fig. 1). Further examination is needed to determine whether these genes play an important role during *M. oryzae* appressorium devel-

Table 2. Primers used for quantitative real-time PCR

Gene locus	Forward primer (5'-3')	Reverse primer (5'-3')
MGG_00204T0	GTCAAACATTTACCTCGCGC	CATAAAGATTGAACCGCCAG
MGG_00222T0	CACCATCTACTCAAACCCCTC	TCGAATTGTGGACAGACAAAG
MGG_00464T0	TCCTCTTACCAACAGCATG	GACCAGAGGAAATACGACACC
MGG_00621T0	TGTGACCTTGTGCTCTTGTG	GACGTGCAACCTCTTTTCATG
MGG_00752T0	CTTTGTGCGGTGTTTCCTCAG	GCAGCGGAACGAATTTGAAG
<i>MCK1</i>	GGTTTTATGCCGATTTGAGC	TCTGTGGGAGCATTGACTG
MGG_01117T0	TCCCAGAAAGTGACCATCAAG	GGTCCAAGAACTGAGTGAAGG
MGG_01507T0	ATGCCGTCAGAAGCTTATCG	CTGCCATTTTCTTATCTCTTTCCG
MGG_02313T0	ACAGTATTTCTCCGCCTCAAG	TGCCAATATTCGCTGTGTCC
MGG_03178T0	GCCAAGATCATACTAGACGAG	AATCTAACTTGGCTGTCGGG
MGG_03531T0	TGGCTTTGATACTGGAACGAG	TGAGTGGTTCATGAGGGTTG
MGG_03694T0	CCACGATCAGAACAGGAAGG	CAGGATAAAGGACATGGAGCTG
MGG_03918T0	TCAGCGAATAACAAGGACACG	CTCTTGGTGATACTGAAGTGGG
MGG_04121T0	TTGTCTCGTATGGCTTCAGTG	TTCTTAAGTCTCGCCCAAG
MGG_04212T0	CAATGGCACAACCGTACAG	CAAACCCACGCAAATCAG
MGG_04407T0	GTCTGTTGAGAAGCTGTTGC	GGACTAGAGCTTGAACCTGGG
MGG_04538T0	AGATGTGCCATATTTGCCCC	TGACTGTAGCGTTCTCCAAAG
MGG_05592T0	AGCTCATCGACTTTGCCTAC	GGGTTTCGGTCTCGTAGAAG
MGG_05814T0	ATCTTGGTCAACTCGCTCATC	AGTGAAAGTACTGGATGACGC
MGG_06296T0	CCAACTCGACAACGCTCTATG	ACGAAGCAGAAACCGCAG
MGG_06910T0	TGCCAGGTTGATGTTCTGTG	CCGTGATGTCCTTGTAGTGAG
MGG_06999T0	TCCAAAAGTCTCAGTGTGCG	AATCTGCCCCTGAAACGG
MGG_08101T0	CAAATGGAGAGGTTCAAAGCG	TGTCGATCATGTTCCCAAGG
MGG_08114T0	AGCCATGTTAAGGAGATGCAG	TTCAGTCCATTCATCCACG
MGG_08303T0	ATGTGGCGATGAAGGTCTG	GATTTGAGTTTGTCTCCGTG
MGG_10035T0	CATAGTCATTCTTGTCCCACCC	ATGAGCTTGTCTCGGTGCG
MGG_10380T0	TGACCTTTAGCCACGACATTG	TCAATCCAGATGAGCTTGGTG
MGG_10431T0	AAACCAAACAATGCAGCCG	CCCCATGTACTGTAGCAGTAG
MGG_10668T0	ACTACCTAAAGAAACGGCGAC	CCAGATCGCCAAATACTAGACC
MGG_11494T0	AGTGGACAACGGGCATTTAG	GCAACACCAGACACTATACCTC
MGG_11809T0	CATCACACTTGGCTTTTGGG	TCCCTTCATTGTCCCCTTTG
MGG_13902T0	TCATCGACCTTTTCAGCCG	AAACAAGTCTCCAGGTTCC
MGG_14593T0	GAGGCCGAATGTTTAGAGCTAG	GGCATGACTTTTGTTCGTTG
MGG_14683T0	GCACITTCACATCTTTCTCGG	TTGAGCGTCTGAGTTTGGG
MGG_14684T0	GTGATCAGCTCGTACCTCAG	ATCTGCGCTGTATCCCATG
MGG_14741T0	AGCAGGTAAGGCCAACTAATG	GAGTACTTGGACATCGGAATCG
MGG_15150T0	TCACGAAAACCCATCTCATG	TGATGTTGAAGGAGCGAGTG
MGG_15282T0	TTCGAGTCATTGGGATCTTGG	AGGAACTTGGTCGGCATATC
MGG_16167T0	CTTGCCATCAAACCTGACAAC	TTCTGTGGTATGTGGGTTGG
MGG_16535T0	CAGATAGAGCAACAGAGGCAG	GTCCATGGTCTGCATTTTG
MGG_17376T0	GCCGATGCTTGATTACCAAC	CAGAGTATGAGGTGCTGTAGTG
MGG_17847T0	CTTGCCATCAAACCTGACAAC	TTCTGTGGTATGTGGGTTGG
<i>β-Tubulin</i>	ACAACCTCGTCTTCGGTCAG	GTGATCTGGAAACCTGGAG

Table 3. List of 44 transcript-derived fragments corresponding to 42 genes and the relative abundance of their transcripts during appressorium development

Locus	a. a. length	Putative function
MGG_00204T0	515	Hypothetical protein
MGG_00222T0	652	Dynactin Arp1 p62 subunit RO2
MGG_00464T0	516	MFS phospholipid transporter Git1
MGG_00621T0	948	Beta-hexosaminidase
MGG_00752T0	197	Hypothetical protein
MGG_00883T0	1,528	Mitogen activated protein kinase kinase kinase3
MGG_01117T0	740	Conserved hypothetical protein
MGG_01507T0	694	Acetylglutamate synthase
MGG_02313T0	3,298	Conserved hypothetical protein
MGG_03178T0	229	Conserved hypothetical protein
MGG_03531T0	571	Conserved hypothetical protein
MGG_03694T0	503	Beclin-1
MGG_03918T0	696	Protein phosphatase 1K, mitochondrial precursor
MGG_04121T0	249	Hypothetical protein
MGG_04212T0	563	L-ornithine 5-monooxygenase (<i>OMO1</i>)
MGG_04407T0	481	Cation efflux family protein
MGG_04538T0	584	Conserved hypothetical protein
MGG_05592T0	541	Conserved hypothetical protein
MGG_05814T0	470	Potassium-activated aldehyde dehydrogenase
MGG_06296T0	185	Nuclear cap-binding protein subunit 2
MGG_06910T0	770	Transport protein SEC23
MGG_06999T0	514	Hypothetical protein
MGG_08101T0	665	CCR4-NOT transcription complex
MGG_08114T0	855	Hypothetical protein
MGG_08303T0	734	XPG N-terminal domain-containing protein
MGG_10035T0	299	Conserved hypothetical protein
MGG_10380T0	426	Cystathionine gamma-lyase
MGG_10431T0	793	Extracellular cell wall glucanase Crf1
MGG_10668T0	494	Ceramide glucosyltransferase
MGG_11494T0	478	DUF124 domain protein
MGG_11809T0	740	Hypothetical protein
MGG_13902T0	802	Conserved hypothetical protein
MGG_14593T0	312	Hypothetical protein
MGG_14683T0	594	Hypothetical protein
MGG_14684T0	60	Hypothetical protein
MGG_14741T0	245	Predicted protein
MGG_15150T0	108	Conserved hypothetical protein
MGG_15282T0	619	Conserved hypothetical protein
MGG_16167T0	535	Hypothetical protein
MGG_16535T0	224	Hypothetical protein
MGG_17376T0	83	PP-loop family protein
MGG_17847T0	728	Hypothetical protein

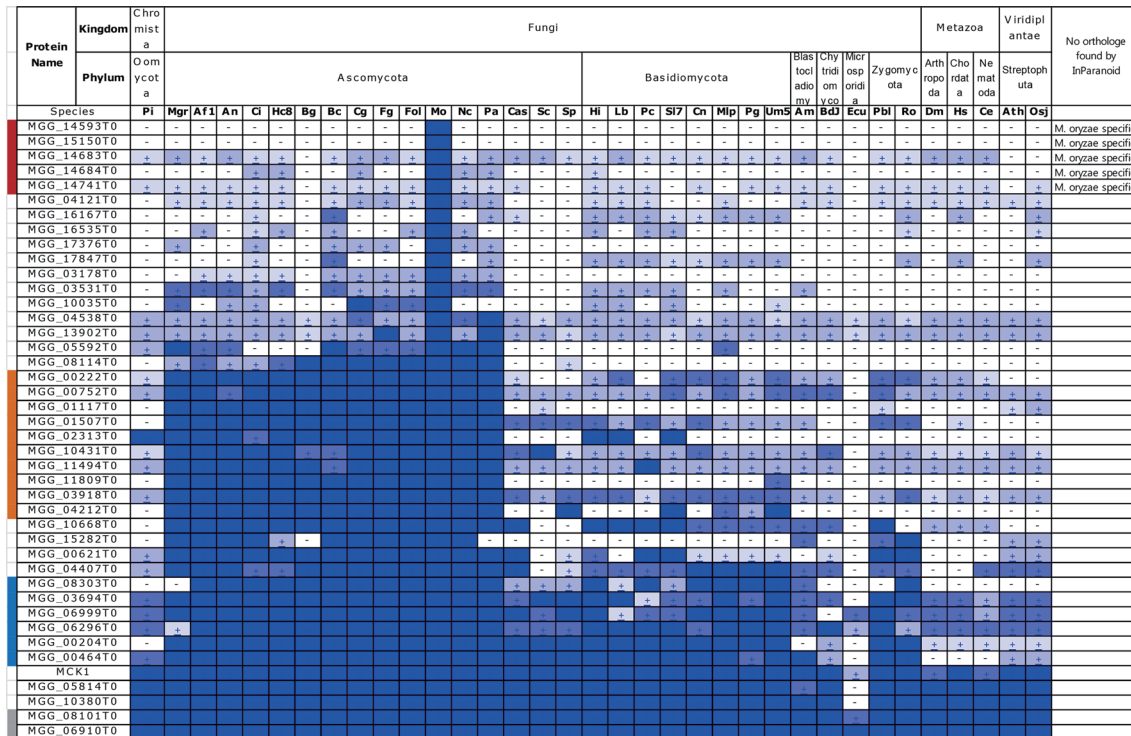


Fig. 1. Distribution of 42 appressorium-specific genes analyzed using BLAST Matrix and InParanoid algorithm. Abbreviation for fungal species and other organisms: Pi, *Phytophthora infestans*; Mgr, *Mycosphaerella graminicola*; Af1, *Aspergillus fumigatus* Af293; An, *Aspergillus nidulans*; Ci, *Coccidioides immitis*; Hc8, *Histoplasma capsulatum* H88; Bg, *Blumeria graminis* f. sp. *hordei*; Bc, *Botrytis cinerea*; Cg, *Colletotrichum graminicola* M1.001; Fg, *Fusarium graminearum*; Fol, *Fusarium oxysporum*; Mo, *Magnaporthe oryzae* 70-15; Nc, *Neurospora crassa*; Pa, *Podospora anserina*; Cas, *Candida albicans* SC5314; Sc, *Saccharomyces cerevisiae* S288C; Sp, *Schizosaccharomyces pombe*; Hi, *Heterobasidion irregulare* TC32-1; Lb, *Laccaria bicolor*; Pc, *Phanerochaete chrysosporium*; Sl7, *Serpula lacrymans* S7.3; Ecu, *Encephalitozoon cuniculi* JAM81; Pbl, *Phycomyces blakesleeanus*; Ro, *Rhizopus oryzae*; Dm, *Dorosophila melanogaster*; Hs, *Homo sapiens*; Ce, *Caenorhabditis elegans*; Ath, *Arabidopsis thaliana*; Osj, *Oryza sativa japonica*. Red bar, *M. oryzae*-specific; orange bar, Ascomycota-specific; blue bar, fungal-specific; gray bar, conserved in whole organisms that we used in this study.

opment and/or pathogenesis.

We also found that 10 genes (MGG_00222T0, MGG_00752T0, MGG_01117T0, MGG_01507T0, MGG_02313T0, MGG_10431T0, MGG_11494T0, MGG_11809T0, MGG_03918T0, and MGG_04212T0) were Ascomycota-specific (particularly in Pezizomycotina), 6 additional genes (MGG_08303T0, MGG_03694T0, MGG_06999T0, MGG_06296T0, MGG_00204T0, and MGG_00464T0) were fungal-specific, and 2 genes (MGG_08101T0 and MGG_06910T0) were conserved in all organisms included in the analysis (Fig. 1).

Validation of expression patterns by qRT-PCR. To validate gene expression patterns suggested by cDNA-AFLP analysis, qRT-PCR analysis was conducted. A total of 23 genes (54.8%) were up-regulated, 9 genes (21.4%) were down-

regulated, and 10 genes (23.8%) were not differentially expressed (Fig. 2).

MGG_04212T0 encodes an L-ornithine 5-monooxygenase (*OMO1*), which is the key precursor for all hydroxamate siderophore biosynthesis in fungi (Eisendle et al., 2003; Schrettl et al., 2007). The siderophore is known to be required for virulence in *A. fumigatus* (Schrettl et al., 2007). We found that *OMO1* expression was significantly up-regulated during appressorium formation (Fig. 1). Previous studies revealed that overcoming host-driven oxidative stress was a prerequisite for full pathogenicity in rice blast fungus (Chi et al., 2009; Huang et al., 2011). We previously showed homeostatic regulation of ferrous ion might serve an important role in pathogenicity via overcoming oxidative stress (Chi et al., 2009).

Similarly, MGG_04407T0, which encodes a putative cation efflux protein, and is also required for regulation of metal ion

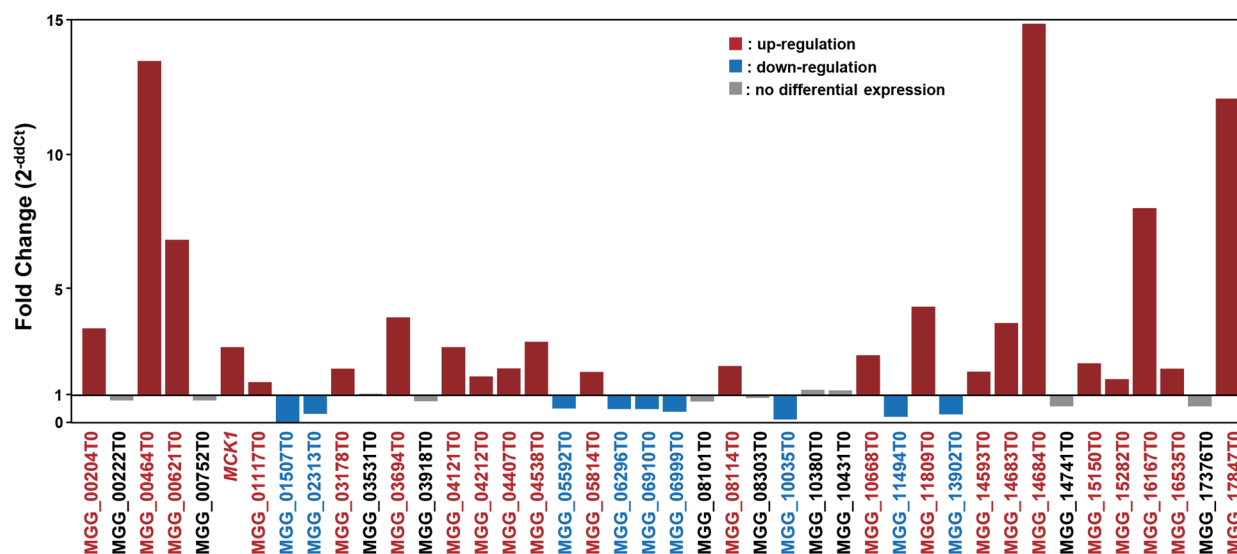


Fig. 2. Quantitative real-time PCR analysis of gene expression during appressorium development. Up-regulated genes (more than 2 fold) are indicated by red bars, down-regulated genes (less than 0.5 fold) are marked by blue bars. The genes did not show differentially expression are noted in black.

concentration. Further investigation is required to elucidate the roles of MGG_04212T0 and MGG_04407T0 in *M. oryzae* pathogenicity and metal ion regulation.

cDNA-AFLP, sequencing and qRT-PCR can be combined for effective identification of differentially expressed genes under specific conditions. Using these approaches, we have identified and confirmed differentially expressed genes during appressorium formation in *M. oryzae*. Subsequent expression, bioinformatics, and functional validation revealed interesting pathogenicity-related genes in *M. oryzae*. Further gene knock-out analysis would determine the role of these genes in appressorium development and/or pathogenicity.

Conflicts of Interest

No potential conflict of interest relevant to this article was reported.

Acknowledgments

The authors grateful to Jongbum Jeon for assistance in analysis of overall data. This work was supported by the National Research Foundation of Korea grant funded by the Korean government (NRF-2017R1D1A1B04035888).

References

- Adachi, K. and Hamer, J. E. 1998. Divergent cAMP signaling pathways regulate growth and pathogenesis in the rice blast fungus *Magnaporthe grisea*. *Plant Cell* 10: 1361-1374.
- Arroyo, J., Sarfati, J., Baixench, M. T., Ragni, E., Guillén, M., Rodríguez-Peña, J. M. et al. 2007. The GPI-anchored gas and Crh families are fungal antigens. *Yeast* 24: 289-296.
- Chi, M.-H., Park, S.-Y., Kim, S. and Lee, Y.-H. 2009. A novel pathogenicity gene is required in the rice blast fungus to suppress the basal defenses of the host. *PLoS Pathog.* 5: e1000401.
- Choi, J., Kim, Y., Kim, S., Park, J. and Lee, Y.-H. 2009a. MoCRZ1, a gene encoding a calcineurin-responsive transcription factor, regulates fungal growth and pathogenicity of *Magnaporthe oryzae*. *Fungal Genet. Biol.* 46: 243-254.
- Choi, J. H., Kim, Y. and Lee, Y.-H. 2009b. Functional analysis of MCNA, a gene encoding a catalytic subunit of calcineurin, in the rice blast fungus *Magnaporthe oryzae*. *J. Microbiol. Biotechnol.* 19: 11-16.
- Ebbole, D. J. 2007. *Magnaporthe* as a model for understanding host-pathogen interactions. *Annu. Rev. Phytopathol.* 45: 437-456.
- Eisendle, M., Oberegger, H., Zadra, I. and Haas, H. 2003. The siderophore system is essential for viability of *Aspergillus nidulans*: functional analysis of two genes encoding l-ornithine N 5-monooxygenase (sidA) and a non-ribosomal peptide synthetase (sidC). *Mol. Microbiol.* 49: 359-375.
- Hamer, J. E. and Talbot, N. J. 1998. Infection-related development in the rice blast fungus *Magnaporthe grisea*. *Curr. Opin. Microbiol.* 1: 693-697.
- Howard, R. J. and Valent, B. 1996. Breaking and entering: host pen-

- etration by the fungal rice blast pathogen *Magnaporthe grisea*. *Annu. Rev. Microbiol.* 50: 491-512.
- Huang, K., Czymbek, K. J., Caplan, J. L., Sweigard, J. A. and Donofrio, N. M. 2011. *HYR1*-mediated detoxification of reactive oxygen species is required for full virulence in the rice blast fungus. *PLoS Pathog.* 7: e1001335.
- Irie, T., Matsumura, H., Terauchi, R. and Saitoh, H. 2003. Serial Analysis of Gene Expression (SAGE) of *Magnaporthe grisea*: genes involved in appressorium formation. *Mol. Genet. Genomics* 270: 181-189.
- Jeon, J., Goh, J., Yoo, S., Chi, M.-H., Choi, J., Rho, H.-S. et al. 2008. A putative MAP kinase kinase kinase, *MCK1*, is required for cell wall integrity and pathogenicity of the rice blast fungus, *Magnaporthe oryzae*. *Mol. Plant Microbe Interact.* 21: 525-534.
- Jeon, J., Park, S.-Y., Chi, M.-H., Choi, J., Park, J., Rho, H.-S. et al. 2007. Genome-wide functional analysis of pathogenicity genes in the rice blast fungus. *Nat. Genet.* 39: 561-565.
- Lee, I. H., Kumar, S. and Plamann, M. 2001. Null mutants of the neurospora actin-related protein 1 pointed-end complex show distinct phenotypes. *Mol. Biol. Cell* 12: 2195-2206.
- Lee, Y.-H. and Dean, R. A. 1993. cAMP regulates infection structure formation in the plant pathogenic fungus *Magnaporthe grisea*. *Plant Cell* 5: 693-700.
- Levin, D. E. 2005. Cell wall integrity signaling in *Saccharomyces cerevisiae*. *Microbiol. Mol. Biol. Rev.* 69: 262-291.
- Liu, Z.-M. and Kolattukudy, P. E. 1999. Early expression of the calmodulin gene, which precedes appressorium formation in *Magnaporthe grisea*, is inhibited by self-inhibitors and requires surface attachment. *J. Bacteriol.* 181: 3571-3577.
- Livak, K. J. and Schmittgen, T. D. 2001. Analysis of relative gene expression data using real-time quantitative PCR and the 2(-Delta Delta C(T)) method. *Methods* 25: 402-408.
- Lu, J.-P., Liu, T.-B. and Lin, F.-C. 2005. Identification of mature appressorium-enriched transcripts in *Magnaporthe grisea*, the rice blast fungus, using suppression subtractive hybridization. *FEMS Microbiol. Lett.* 245: 131-137.
- Mitchell, T. K. and Dean, R. A. 1995. The cAMP-dependent protein kinase catalytic subunit is required for appressorium formation and pathogenesis by the rice blast pathogen *Magnaporthe grisea*. *Plant Cell* 7: 1869-1878.
- Nguyen, Q. B., Kadotani, N., Kasahara, S., Tosa, Y., Mayama, S. and Nakayashiki, H. 2008. Systematic functional analysis of calcium-signalling proteins in the genome of the rice-blast fungus, *Magnaporthe oryzae*, using a high-throughput RNA-silencing system. *Mol. Microbiol.* 68: 1348-1365.
- Oh, Y., Donofrio, N., Pan, H., Coughlan, S., Brown, D. E., Meng, S. et al. 2008. Transcriptome analysis reveals new insight into appressorium formation and function in the rice blast fungus *Magnaporthe oryzae*. *Genome Biol.* 9: R85.
- Park, J., Park, B., Jung, K., Jang, S., Yu, K., Choi, J. et al. 2008. CFGP: a web-based, comparative fungal genomics platform. *Nucleic Acids Res.* 36: D562-D571.
- Park, S.-Y., Choi, J., Lim, S.-E., Lee, G.-W., Park, J., Kim, Y. et al. 2013. Global expression profiling of transcription factor genes provides new insights into pathogenicity and stress responses in the rice blast fungus. *PLoS Pathog.* 9: e1003350.
- Park, S.-Y., Jwa, N.-S., Chi, M.-H. and Lee, Y.-H. 2009. A fluorescence-based cDNA-AFLP method for identification of differentially expressed genes. *Plant Pathol. J.* 25: 184-188.
- Patton-Vogt, J. L. and Henry, S. A. 1998. *Git1*, a gene encoding a novel transporter for glycerophosphoinositol in *Saccharomyces cerevisiae*. *Genetics* 149: 1707-1715.
- Remm, M., Storm, C. E. V. and Sonnhammer, E. L. L. 2001. Automatic clustering of orthologs and in-paralogs from pairwise species comparisons. *J. Mol. Biol.* 314: 1041-1052.
- Schrettl, M., Bignell, E., Kragl, C., Sabiha, Y., Loss, O., Eisendle, M. et al. 2007. Distinct roles for intra- and extracellular siderophores during *Aspergillus fumigatus* infection. *PLoS Pathog.* 3: 1195-1207.
- Soanes, D. M., Chakrabarti, A., Paszkiewicz, K. H., Dawe, A. L. and Talbot, N. J. 2012. Genome-wide transcriptional profiling of appressorium development by the rice blast fungus *Magnaporthe oryzae*. *PLoS Pathog.* 8: e1002514.
- Strange, R. N. and Scott, P. R. 2005. Plant disease: a threat to global food security. *Annu. Rev. Phytopathol.* 43: 83-116.
- Talbot, N. J. 2003. On the trail of a cereal killer: exploring the biology of *Magnaporthe grisea*. *Annu. Rev. Microbiol.* 57: 177-202.
- Talbot, N. J., Mccafferty, H. R. K., Ma, M., Koore, K. and Hamer, J. E. 1997. Nitrogen starvation of the rice blast fungus *Magnaporthe grisea* may act as an environmental cue for disease symptom expression. *Physiol. Mol. Plant Pathol.* 50: 179-195.
- Thines, E., Weber, R. W. S. and Talbot, N. J. 2000. MAP kinase and protein kinase A-dependent mobilization of triacylglycerol and glycogen during appressorium turgor generation by *Magnaporthe grisea*. *Plant Cell* 12: 1703-1718.
- Xu, J.-R. and Hamer, J. E. 1996. MAP kinase and cAMP signaling regulate infection structure formation and pathogenic growth in the rice blast fungus *Magnaporthe grisea*. *Genes Dev.* 10: 2696-2706.