



Color comparison between non-vital and vital teeth

Delia Cristina Greta¹, Horațiu Alexandru Colosi^{2*}, Cristina Gasparik¹, Diana Ducea¹

¹Department of Prosthetic Dentistry and Dental Materials, Division of Dental Propaedeutics and Esthetic Dentistry, Faculty of Dentistry, Iuliu Hațieganu University of Medicine and Pharmacy, Cluj-Napoca, Romania

²Department of Medical Education, Division of Medical Informatics and Biostatistics, Faculty of Medicine, Iuliu Hațieganu University of Medicine and Pharmacy, Cluj-Napoca, Romania

PURPOSE. The aim of this study was to define a color space of non-vital teeth and to compare it with the color space of matched vital teeth, recorded in the same patients. **MATERIALS AND METHODS.** In a group of 218 patients, with the age range from 17 to 70, the middle third of the buccal surface of 359 devitalized teeth was measured using a clinical spectrophotometer (Vita Easyshade Advance). Lightness (L*), chromatic parameters (a*, b*), chroma (C*), hue angle (h) and the closest Vita shade in Classical and 3D Master codifications were recorded. For each patient, the same data were recorded in a vital reference tooth. The measurements were performed by the same operator with the same spectrophotometer, using a standardized protocol for color evaluation. **RESULTS.** The color coordinates of non-vital teeth varied as follows: lightness L*: 52.83–92.93, C*: 8.23–58.90, h: 51.20–101.53, a*: -2.53–24.80, b*: 8.10–53.43. For the reference vital teeth, the ranges of color parameters were: L*: 60.90–97.16, C*: 8.43–39.23, h: 75.30–101.13, a*: -2.36–9.60, b*: 8.36–39.23. The color differences between vital and non-vital teeth depended on tooth group, but not on patient age. **CONCLUSION.** Non-vital teeth had a wider color space than vital ones. Non-vital teeth were darker (decreased lightness), more saturated (increased chroma), and with an increased range of the hue interval. An increased tendency towards positive values on the a* and b* axes suggested redder and yellower non-vital teeth compared to vital ones.

[J Adv Prosthodont 2018;10:218-26]

KEYWORDS: Dental color; Non-vital tooth; Instrumental measurement; Color parameter; Dyschromia

INTRODUCTION

Research on dental color and studies of tooth discoloration are important topics, with significant practical implications.¹⁻³ Dental clinicians and researchers in the field of esthetic dentistry are challenged to understand the optical properties of

teeth and their application in everyday practice. Dental color evaluation is a critical component of esthetic dentistry. It requires knowledge on the dimensions of tooth color and on the available tools used for their assessment, as well as clinical experience and technical skills to transfer these parameters towards a natural outcome of dental restorations.

Every direct or indirect restoration is evaluated in terms of color, shape, and texture.⁴ However, color appears to be the most important factor for most patients.⁵

An adequate definition of color was published in 2001 by the Commission Internationale de l'Eclairage (C.I.E.), as being a “characteristic of the visual perception that can be described by the attributes of hue, value, and chroma”. Used almost exclusively in color research, the CIE L*a*b* system describes color as being the product of blending three color coordinates: L* (Luminance or lightness value), a* (color coordinate on the red-green axis), and b* (color

Corresponding author:

Horațiu A. Colosi

Department of Medical Education, Discipline of Medical Informatics and Biostatistics, Faculty of Medicine, Iuliu Hațieganu University of Medicine and Pharmacy, 6 Louis Pasteur Street, Cluj-Napoca, 400349, Romania
Tel. +40264597256; e-mail, hcolosi@umfcluj.ro

Received July 26, 2017 / Last Revision December 16, 2017 / Accepted February 27, 2018

© 2018 The Korean Academy of Prosthodontics

This is an Open Access article distributed under the terms of the Creative Commons Attribution Non-Commercial License (<http://creativecommons.org/licenses/by-nc/3.0>) which permits unrestricted non-commercial use, distribution, and reproduction in any medium, provided the original work is properly cited.

coordinate on the yellow-blue axis). By specifying these three numerical values, the CIE $L^*a^*b^*$ system is able to locate the color of an object in a three-dimensional (3D) color space.⁶

Hue is the angular component of a polar representation of the CIE $L^*a^*b^*$ color space, in which chroma is its radial component. The hue angle (h), defined as $h = \arctg(b^*/a^*)$ and measured in degrees, is the dimension of color related to the perceived light wavelengths. Teeth have been described as having their hue in the range of yellow-brown, with different degrees of saturation.

Value (L^*) is thought to be the most important dimension of color in dentistry.⁷ A color's L^* is defined by the amount of black and white within the scale, which is related to lightness/darkness, whilst chroma (C^*) represents the degree of saturation of a color.^{6,8}

In previous studies,^{9,10} variations of color coordinates have been reported for human teeth in the range of $L^* = 60 - 95$ (where 0 = black and 100 = white), $b^* = 8 - 25$ (positive values designate colors towards yellow, negative values designate colors towards blue), and $a^* = -2$ to $+10$ (negative values designate colors towards green, positive values designate colors towards red). The CIE $L^*a^*b^*$ color space is also used to characterize changes in tooth color. For example, when teeth are whitened with hydrogen peroxide, they become brighter (L^* increases), less red (a^* increases in positive values), and less yellow (b^* increases in positive values).¹¹⁻¹³

The evaluation of tooth shades may be a very difficult task for every clinician.¹⁴ It can be achieved either by visual comparison of the target tooth with tabs from commercial shade guides, or by measuring the color coordinates with devices based on colorimetry, spectrophotometry, spectroradiometry, or digital imaging. Instrumental shade matching techniques have been introduced and advocated to reduce the subjectivity of visual shade selection.⁸ Compared to conventional visual shade assessment, spectrophotometric analyses were determined to be more reproducible.^{8,15}

Pathology consisting in the loss of tooth vitality has various and complex etiologies and, in addition to other consequences, it can also influence dental color. Changes in the initial hue, saturation, and lightness value, which appear after the loss of tooth vitality, immediately or in time, are also influenced by the endodontic treatment protocol, materials and irrigants used, and by the quality of the coronal reconstruction.^{2,3} Quite often, the first clue suggesting the need for further investigation is dental color, which is perceived as being different, compared to a corresponding vital tooth.

Numerous studies have focused on the evaluation of dental color parameters, either *in vivo* or on extracted teeth, with the aim to define a natural tooth color space, within a population.^{9,16,17} The measurements involved the whole visible tooth surface, or different dental areas^{18,19} and they were interpreted in respect to age, sex, or skin color,^{15,20,21} as well as the position of the tooth in the dental arch.^{22,23}

However, although these studies concluded on the val-

ues of dental color parameters, no attempts have been made to differentiate tooth colors that characterize vital teeth, in comparison to the color parameters of non-vital ones. Moreover, although the modifications in dental color due to the loss of tooth vitality are well known, less information is available regarding the degree of tooth discoloration and the difference between the color of non-vital teeth and that of their corresponding vital teeth.

The aim of this study was to define a tooth color-space for non-vital teeth and to compare it with the color-space of their corresponding vital teeth. The null hypothesis was that no significant differences may be found between the values of L^* , a^* , b^* , C^* , h in non-vital teeth, compared to the corresponding values in matched vital teeth of the same patients.

MATERIALS AND METHODS

The study targeted patients with non-vital teeth from Cluj-Napoca, Romania. It included 218 consecutive patients with non-vital teeth, who addressed the Department of Propaedeutics and Esthetic Dentistry at the Faculty of Dentistry of the Iuliu Hatieganu University of Medicine and Pharmacy, in Cluj-Napoca, Romania, as well as a private dental office from Cluj-Napoca, Romania.

The studied sample included 359 non-vital and 286 vital teeth from these 218 patients (130 female, F and 88 male, M), with the age range between 17 and 70.

All participants were provided with information on the study protocol and signed an informed consent, approved by the Research Ethics Committee of the Iuliu Hatieganu University of Medicine and Pharmacy, Cluj-Napoca.

The color parameters of the 359 non-vital teeth, 91 anterior teeth (55 central, and 36 lateral incisors), 24 canines, and 244 posterior teeth (119 premolars, and 125 molars) were measured with a clinical spectrophotometer (Vita Easyshade Advance, Vita Zahnfabrik). Lightness (L^*), chromatic parameters (a^* , b^*), chroma (C^*), hue angle (h) and the closest Vita Shade in both Classical and 3D Master codifications were recorded.

The contact probe tip with the protective shield was held at 90° to the tooth surface, in its middle third, the area that best illustrates tooth shade.⁹ A custom made acrylic positioning device was used to adapt the probe tip on the tooth surface, in order to measure similar tooth areas and to avoid variations of the probe tip angulation. Three readings were recorded for each measurement in Single Tooth mode. An average of the three measurements was used for further analysis, in every case.

For every patient, the same color parameters were also recorded for a vital reference tooth. Therefore, the same measurement protocol has been applied to a total of 286 vital reference teeth, 86 anterior teeth (56 central incisors, 30 lateral incisors, 26 canines) and 174 posterior teeth (110 premolars and 64 molars). Whenever possible, the matching contralateral vital tooth was measured as reference, in order to provide the best possible matching for comparing dental

color parameters of vital and non-vital teeth. In patients with several non-vital measured teeth, the same vital reference tooth was used as reference.

The inclusion criteria of the measured teeth were: intact crowns or with limited composite resin reconstructions, not affecting the buccal surface of the tooth, thereby allowing a correct positioning of the measuring device. Teeth with extensive fillings or prosthetic reconstructions of the buccal surface, teeth with untreated caries and temporary fillings were excluded from both the vital and the non-vital teeth group. Participants who reported tooth bleaching within the previous 6 months were also excluded. If the corresponding tooth was absent or non-vital or did not meet the inclusion criteria due to extensive fillings, crowns, or veneers, the closest sound vital tooth was measured and used as reference.

The measurements were performed by the same operator, with the same spectrophotometer, using the standardized protocol for color evaluation described above. The characteristics of the artificial illuminants were identical in both dental offices (ceiling fluorescent tube lighting OSRAM LumiluxDeluxe 36W/965 5500K).

The measured teeth were grouped in: Group 1 = vital incisors (VI) - central and lateral incisors, Group 2 = vital canines (VC), Group 3 = vital posterior teeth (VP) - premolars and molars, Group 4 = non-vital incisors (NVI), Group 5 = nonvital canines (NVC), Group 6 = non-vital posterior teeth (NVP).

Color differences between vital and non-vital teeth were calculated using the CIEDE2000 color-difference formula (ΔE_{00}), which includes lightness, chroma, and hue weighting functions, as well as a scaling factor for a^* and a rotation function (R_T) between chroma and hue differences, in order to improve the formula performance for grey and blue colors:²⁴

$$\Delta E_{00} = \sqrt{\left(\frac{\Delta L'}{K_L S_L}\right)^2 + \left(\frac{\Delta C'}{K_C S_C}\right)^2 + \left(\frac{\Delta H'}{K_H S_H}\right)^2 + R_T \left(\frac{\Delta C'}{K_C S_C}\right) \left(\frac{\Delta H'}{K_H S_H}\right)}$$

Since the lighting conditions in this study were standardized, the parametric correction factors, K_L , K_C , and K_H were set at values of 1.

All color parameters (L^* , a^* , b^* , C^* , h) have been compared between vital and non-vital teeth, using Wilcoxon tests for paired samples. A Bonferroni correction from $\alpha = 0.05$ down to $\alpha = 0.01$ has been used as a statistical significance threshold level, in order to account for these multiple comparisons.

For the pairs of vital-nonvital contralateral teeth (for instance, vital maxillary canine in one quadrant vs non-vital maxillary canine in the other quadrant), the color difference, ΔE , was calculated according to the CIEDE2000 color difference formula for each of the three groups of teeth (VI vs NVI, VC vs NVC, VP vs NVP). These computed color differences were then compared among incisors, canines, and posteriors, as well as among patients from different age groups, using a Kruskal-Wallis rank sum test, followed by U

Mann-Whitney rank sum tests with continuity correction and a Bonferroni correction of the statistical significance threshold level down to $\alpha = 0.017$, for post-hoc testing.

Only the 332 matching pairs of vital and non-vital teeth were included in the ΔE comparisons. The remaining 27 pairs of teeth, belonging to different groups, due to unavailable same-group vital reference teeth (for instance, lateral non-vital tooth vs frontal reference tooth), were only included in the overall comparison of color parameters (L^* , a^* , b^* , C^* , h) between vital and non-vital teeth.

Data analysis has been performed using Microsoft Excel 2010 (Microsoft, Redmond, WA, USA), R 3.1.1. (R Foundation for Statistical Computing, Vienna, Austria) and OriginPro 8.0724 (OriginLab, Northampton, MA, USA).

RESULTS

Most included patients (59.63%) were female and belonged to the middle aged group (55.04%). Patient distribution based on age and sex is presented in Table 1.

In non-vital teeth, L^* values were lower, compared to vital teeth. C^* values exhibited higher values, while the hue (h) interval was wider for non-vital teeth compared to vital ones. The color coordinates of non-vital teeth varied as follows: lightness L^* : 52.83 – 92.93, C^* : 8.23 – 58.90, h : 51.20 – 101.53, a^* : -2.53 – 24.80, b^* : 8.10 – 53.43. For the reference vital teeth, the ranges of color parameters were: L^* : 60.90 – 97.16, C^* : 8.43 – 39.23, h : 75.30 – 101.13, a^* : -2.36 – 9.60, b^* : 8.36 – 39.23.

Table 2 presents the main descriptive statistics of color coordinates for vital and non-vital teeth.

All color parameters (L^* , a^* , b^* , C^* , h) differed significantly between vital and non-vital teeth ($P < .0001$ - Wilcoxon test for paired samples). The chromatic color coordinates (a^* and b^*) displayed a wider range for non-vital teeth compared to vital teeth, being especially grouped towards positive values.

The CIE L^* , a^* , b^* color space of vital versus non-vital teeth is illustrated in Fig. 1. The lightness was concentrated in a low-value area for the non-vital teeth and in a higher-value area for vital teeth. The corresponding grouping pattern of a^* and b^* chromatic parameters in vital versus non-vital teeth is also presented in Fig. 2. An increased tendency towards positive values on the a^* and b^* axes of non-vital teeth has been observed, indicating redder and yellower non-vital teeth in comparison with vital ones.

Table 1. Age and sex distribution in the studied sample

	17 - 30 years No. (%)	31 - 50 years No. (%)	51 - 70 years No. (%)	Total (%)
Female	52 (68.42)	67 (55.83)	11 (50)	130 (59.63)
Male	24 (31.58)	53 (44.17)	11 (50)	88 (40.37)
Total (%)	76 (100)	120 (100)	22 (100)	218 (100)

Table 2. Descriptive statistics of color parameters for vital and non-vital teeth in the studied sample

	L*	a*	b*	C*	h
All Vital Teeth					
Mean	85.06	-0.29	24.66	24.70	91.33
SD	5.22	1.55	6.17	6.16	3.85
Median	85.83	-0.53	24.90	24.93	91.20
Minimum	60.90	-2.63	8.36	8.43	75.30
Maximum	97.16	9.60	39.23	39.23	101.13
All Non-vital Teeth					
Mean	76.41	2.96	27.39	27.76	84.53
SD	6.53	3.43	6.72	7.00	6.34
Median	77.00	2.20	26.93	27.20	85.23
Minimum	52.83	-2.53	8.10	8.23	51.20
Maximum	92.93	24.80	53.43	58.90	101.53

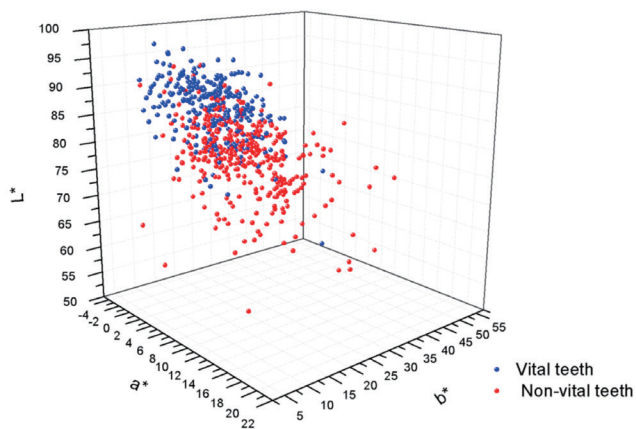
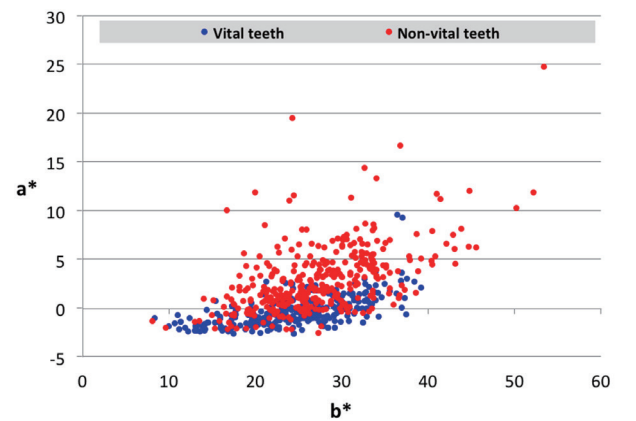
**Fig. 1.** The CIE L*, a*, b* color space of vital versus non-vital teeth.**Fig. 2.** Distribution of chromatic parameters (a* and b*) in non-vital and vital teeth.

Table 3 contains the color coordinates of each group of teeth (Vital incisors VI, Vital canines VC, Vital posterior teeth VP, Non-Vital incisors NVI, Non-Vital canines NVC, Non-Vital posterior teeth NVP). The highest lightness and lowest chroma were found for VI, while the lowest lightness and most increased chroma were found for NVP. The highest a* and b* values were found in NVP and the lowest in VI.

The three most frequent values found using the Vita Classical shade guide were B3 (25.63%), A4 (25.07%), and A3,5 (12.53%), for non-vital teeth, and B3 (25.07%), A3 (22.01%), and A1 (15.04%), for vital teeth. Using the 3D Master shade guide, the three most frequently recorded shades for non-vital teeth were 2M3 (18.66%), 3M3 (15.6%), and 2R2.5 (11.98%), while vital teeth were most frequently

recorded as having 2M3 (23.68%), 2M2 (22.01%), and 1M2 (14.76%) shades. Table 4 and Table 5 illustrate the distribution of color shade in vital and non-vital teeth.

This study found color differences between vital and non-vital teeth (CIEDE2000 color difference formula) ranging between $\Delta E_{00} = 0.42 - 27.20$, with a median $\Delta E_{00} = 7.10$. Three out of the 332 ΔE values between matching pairs of vital and non-vital teeth fell under the perceptibility threshold of $\Delta E_{00} = 0.8$,²⁵ and 11 fell under the acceptability threshold of $\Delta E_{00} = 1.8$.²⁵ Among the 27 non-matching pairs of vital and non-vital teeth, one more ΔE value fell below the acceptability threshold of $\Delta E_{00} = 1.8$. Therefore, from a total of 359 ΔE_{00} values, 12 were in the acceptable and 3 were in the non-perceptible range.

Table 3. Descriptive statistics of color parameters in the vital and non-vital teeth groups

	L*	a*	b*	C*	h
Vital Incisors (VI)					
Mean	86.20	-0.98	18.87	18.88	93.96
SD	5.18	1.51	5.23	5.20	4.23
Median	86.73	-1.30	19.35	19.20	93.92
Minimum	72.30	-2.63	8.36	8.43	75.93
Maximum	97.16	9.26	37.03	38.20	101.13
Non-vital Incisors (NVI)					
Mean	79.81	1.46	23.17	23.59	87.16
SD	6.17	2.94	4.99	5.74	6.49
Median	79.93	0.90	22.76	22.76	87.66
Minimum	61.10	-2.20	9.63	9.83	51.20
Maximum	92.93	19.53	38.66	48.50	101.53
Vital Canines (VC)					
Mean	84.57	0.44	25.86	26.09	89.30
SD	3.47	1.23	4.45	4.17	2.81
Median	84.43	0.16	26.43	26.46	89.56
Minimum	73.73	-1.90	15.96	15.96	85.20
Maximum	91.90	2.50	34.23	34.26	95.50
Non-vital Canines (NVC)					
Mean	77.33	3.29	26.92	27.16	84.24
SD	3.93	3.33	4.29	4.34	4.94
Median	77.78	3.01	27.60	27.75	84.68
Minimum	66.73	-0.76	14.95	15.00	72.43
Maximum	85.66	14.36	33.70	34.76	92.70
Vital Posteriors (VP)					
Mean	84.61	-0.07	27.19	27.22	90.39
SD	5.37	1.51	4.85	4.86	3.13
Median	85.30	-0.30	26.93	26.95	90.75
Minimum	60.90	-2.60	16.00	16.13	75.30
Maximum	95.56	9.60	39.23	39.23	97.06
Non-vital Posteriors (NVP)					
Mean	75.05	3.49	29.01	29.37	83.58
SD	6.40	3.46	6.81	7.01	6.14
Median	75.82	3.18	28.85	29.00	83.93
Minimum	52.83	-2.53	8.10	8.23	59.03
Maximum	88.50	24.80	53.43	58.90	99.30

Fig. 3 illustrates the frequency distribution of ΔE_{00} color differences between the 332 matching pairs of vital and non-vital teeth.

Delta E_{00} between vital and non-vital teeth differed significantly ($P = .013$ - Kruskal-Wallis test) between Incisors (median $\Delta E_{00} = 6.015$), Canines (median $\Delta E_{00} = 6.374$) and Posterior teeth (median $\Delta E_{00} = 7.452$).

In post-hoc testing, the color difference ΔE_{00} of Incisors (VI vs NVI) differed significantly from the ΔE_{00} of Posteriors (VP vs NVP) ($P = .010$ - U Mann-Whitney test), while ΔE_{00} of Canines vs. ΔE_{00} of Posterior teeth did not reach statistical significance ($P = .067$ - U Mann-Whitney test). Nevertheless, there was a clear difference in respect of ΔE_{00} between anterior teeth (Incisors & Canines) and posterior teeth ($P =$

.0035 - U Mann-Whitney test).

No significant differences in respect to ΔE_{00} between vital and non-vital teeth were found, neither among young, middle-aged, and elderly patients ($P = .286$ - Kruskal-Wallis test) nor between sexes ($P = .217$ - U Mann-Whitney test).

Table 4. Distribution of measured Vita Classic shades in vital and non-vital teeth

VITA classic color	No. of vital teeth (%)	No. of non-vital teeth (%)
A1	54 (15.04)	9 (2.51)
A2	28 (7.8)	24 (6.69)
A3	79 (22.01)	35 (9.75)
A3.5	32 (8.91)	45 (12.53)
A4	5 (1.39)	90 (25.07)
B1	17 (4.74)	1 (0.28)
B2	49 (13.65)	10 (2.79)
B3	90 (25.07)	92 (25.63)
B4	3 (0.84)	8 (2.23)
C1	1 (0.28)	4 (1.11)
C2	0 (0)	1 (0.28)
C3	0 (0)	4 (1.11)
C4	1 (0.28)	22 (6.13)
D3	0 (0)	10 (2.79)
D4	0 (0)	4 (1.11)
Total	359* (100)	359 (100)

* Note: 73 vital teeth were recorded as reference more than once, in patients with several non-vital teeth

Table 5. Distribution of measured Vita 3D Master shades in vital and non-vital teeth

VITA 3D color	No. of vital teeth (%)	No. of non-vital teeth (%)
1M1	20 (5.57)	2 (0.56)
1M2	53 (14.76)	5 (1.39)
2L1.5	5 (1.39)	3 (0.84)
2L2.5	21 (5.85)	5 (1.39)
2M1	11 (3.06)	1 (0.28)
2M2	79 (22.01)	28 (7.8)
2M3	85 (23.68)	67 (18.66)
2R1.5	3 (0.84)	6 (1.67)
2R2.5	27 (7.52)	43 (11.98)
3L1.5	0 (0)	3 (0.84)
3L2.5	5 (1.39)	2 (0.56)
3M1	0 (0)	2 (0.56)
3M2	2 (0.56)	21 (5.85)
3M3	29 (8.08)	56 (15.6)
3R2.5	0 (0)	15 (4.18)
4L1.5	1 (0.28)	1 (0.28)
4L2.5	0 (0)	1 (0.28)
4M1	0 (0)	1 (0.28)
4M2	0 (0)	4 (1.11)
4M3	5 (1.39)	41 (11.42)
4R1.5	1 (0.28)	7 (1.95)
4R2.5	0 (0)	19 (5.29)
5M1	0 (0)	7 (1.95)
5M2	0 (0)	6 (1.67)
5M3	1 (0.28)	11 (3.06)
OM2	1 (0.28)	1 (0.28)
OM3	10 (2.79)	1 (0.28)
Total	359* (100)	359 (100)

* Note: 73 vital teeth were recorded as reference more than once, in patients with several non-vital teeth

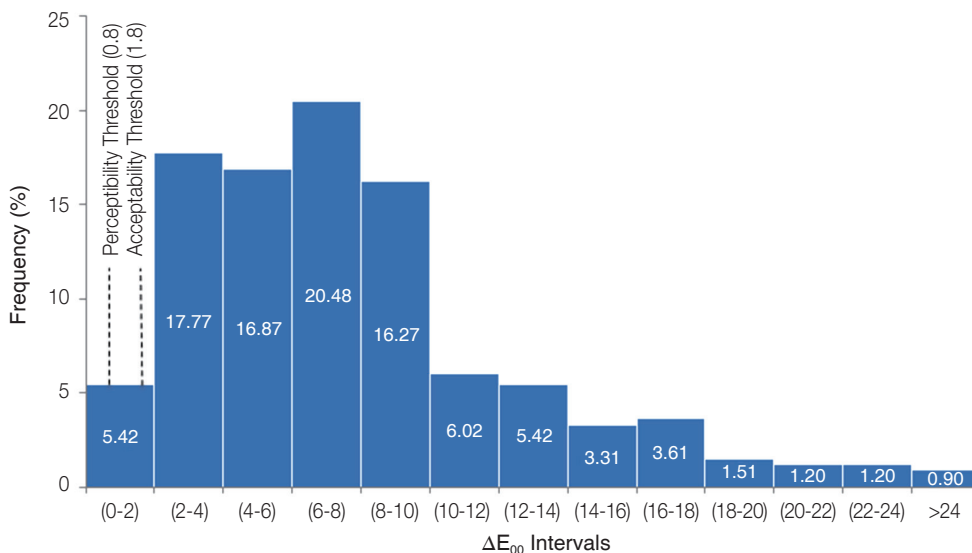


Fig. 3. Frequency distribution of ΔE_{00} for the 332 matching pairs of vital and non-vital teeth.

DISCUSSION

The null hypotheses of the study was rejected, after finding highly significant differences among all color coordinates of investigated vital versus non-vital teeth. The color space of vital teeth was partially within the color space of non-vital teeth, but the color space of non-vital teeth was wider.

The a^* and b^* coordinates of non-vital teeth extended farther on the positive axis (red and yellow) and less on the negative axis (green and blue), confirming non vital teeth to be more chromatic than vital teeth (redder and yellower). Another finding was that lightness (L^*) of non-vital teeth exhibited smaller values compared to vital teeth, while their chroma (C^*) shifted towards values of higher color saturation. As previously suggested in literature,³ such findings can be explained by endodontic pathology, treatment protocol, or dental materials. In these cases, chromogen agents, originating from the dental pulp or endodontic materials that impregnate the dental structure can be responsible for changes in dental color. However, the evaluation of dental color in saturated, darker teeth is more difficult, compared to lighter teeth.¹⁶

In the present study, the Vita Classic B3 shade was found to be most frequent in both non-vital and vital groups. This can be explained by the higher prevalence of posterior non-vital teeth in the studied sample, along with their matching vital teeth (a total of 418 posterior versus only 177 frontal teeth). These results were in agreement with other published literature, in which B3 has been reported as being the most frequent shade of posterior vital teeth.²²

For both vital and non-vital teeth, 2M3 was the most frequent Vita 3D Master shade. This was in agreement with studies that evaluated both frontal and posterior vital teeth.²² The results of the current study differed from those of other researchers, who reported 2M1 (Yuan *et al.*¹⁶), A3 and 3M1 (Gómez *et al.*¹⁵), A3 and 1M2 (Elamin *et al.*²⁰) and 2R2.5 (Rodrigues *et al.*²¹) as the most frequently measured shade; however, the evaluated teeth in these studies were only vital central incisors.

In 2015, Paravina *et al.*²⁵ reported a clinical perceptibility threshold (50:50%) of $\Delta E_{00} = 0.8$ and an acceptability threshold of $\Delta E_{00} = 1.8$. Most ΔE_{00} color differences between vital and non-vital teeth found in the current study (N = 347) exceeded the acceptability threshold²⁴ of $\Delta E_{00} = 1.8$. Only 12 of all 359 ΔE_{00} values fell below the acceptability threshold²⁵ of $\Delta E_{00} = 1.8$, including three values that also fell below the perceptibility threshold²⁵ of $\Delta E_{00} = 0.8$. This confirmed the need to improve the color of the non-vital teeth, to match the vital correspondent ones, as a clinically important outcome.

No difference based on age-group or gender was found in our study regarding the color difference between vital and non-vital teeth. This suggests that the progression of dental color in non-vital teeth is probably not influenced by general factors such as age and gender.

Vita Easyshade is a widespread shade measuring device, extremely accurate both for *in vivo* and *in vitro* studies.^{26,27} A

limitation of this device may derive from the edge loss phenomenon, due to the incongruence between the two surfaces set in contact (tooth and probe). To avoid probe angulation, a custom made acrylic tray was used for every measurement. The middle third of the tooth was chosen as measurement site because it is generally flatter, and it is the most representative for tooth color.^{16,21} The incisal area is too translucent and it allows light to be transmitted, rather than reflected to the spectrophotometer.^{16,28}

Another limitation of the current study may have been the relatively higher prevalence of posterior non-vital teeth in the studied sample, compared to anterior ones (244 posteriors, 91 incisors, and 24 canines, non-vital teeth). This may have been responsible for the concentration of measured shades in the Vita Classic B3 shade, for both vital and non-vital teeth, as the tooth color of posterior teeth has decreased lightness and increased saturation.²³ Nevertheless, given that the current study has included consecutive patients with non-vital teeth who addressed both a private dental office and a University clinic of the same city, this frequency distribution may in fact represent a close estimate of the actual prevalence distribution of non-vital teeth in the target population of the current study.

Non-vital teeth that met the inclusion and exclusion criteria of this study have been analyzed in order to define their color space. Moreover, the same vital reference tooth was used more than once in patients who had more than one non-vital tooth, whenever the other matching vital tooth did not meet the defined inclusion criteria.

The current study defined a color space for non-vital teeth that only partially overlapped on the space color of the matching vital reference teeth. Previous studies^{9,18,19} have also tried to demonstrate that currently available shade guides are insufficient to cover the natural tooth color space. However, these comparisons have been performed either between available shade guides and vital tooth measurements, or, without accounting for the vital or non-vital status of the studied teeth.

Tooth color of vital teeth has been clinically measured by other researchers in order to establish a tooth color space. Different devices have been used (colorimeters, spectrophotometers, spectroradiometers) and large variations of L^* , a^* and b^* have been reported. Odioso *et al.*²⁹ reported mean values of $L^* = 69.3$, $a^* = 5.4$, and $b^* = 18.7$. Hasegawa *et al.*¹⁸ reported mean values of 73.1 for L^* , 3.4 for a^* , and 16.4 for b^* . Zhu *et al.*⁹ conducted a study on vital frontal teeth, both maxillary and mandibular, and reported a large range for L^* (21.89 - 83.75), and intervals between -8.07 - 9.21 for a^* and -6.53 - 59.89 for b^* . Tooth color was measured with a dental spectrophotometer in all three studies. For vital central incisors, Gozalo-Diaz *et al.*³⁰ reported that L^* ranged between 38.0 and 89.5, a^* between 0.3 - 12.2 and b^* between 5.7 - 35.7. In their study, the device for color measurements was a colorimeter. Results can vary a lot when using different devices for tooth color measurements due to their different sensitivities, as exemplified by the study of Cho *et al.*³¹

Compared to previously published findings, a larger range of color coordinates (L^* , a^* , b^*) was found in the current study. This fact can be explained by the large number of both vital and non-vital, incisors, canines and posterior teeth included in this study. When considered separately, a very high mean value of L^* values was found in the current study for vital teeth (85.6) and a very large range for chromatic parameters a^* and b^* in non-vital teeth: -2.53 – 24.80 for a^* and 8.10 – 53.43 for b^* . These findings suggest that non vital teeth have a broader color space compared to vital teeth. Further research may be necessary to verify these findings and to expand the currently accepted color range of natural teeth.

Defining a tooth color space is a very challenging theme for dental researchers. Direct and indirect restoration of non-vital teeth must be considered in terms of both esthetics and biomechanical appearance. Regardless of the great variety of existing dental shades, color of non-vital teeth has a great impact on the final restoration. When it comes to treatment needs, if the color difference between vital and non-vital teeth exceeds the perceptibility and acceptability thresholds, a requirement for corrective therapy can be expected.

CONCLUSION

Within the limitations of the present study, we can conclude that non-vital teeth have a wider color space than vital ones.

Differences have been found between the spectra covered by color coordinates of non-vital teeth compared to the matching vital teeth used as reference. Non-vital teeth appear to be darker (decreased lightness) and more saturated (increased chroma), and have an increased hue interval, compared to their vital counterparts. There was an increased tendency towards positive values on both the a^* and the b^* axes, suggesting more reddish and yellowish non-vital teeth compared to vital ones. The color differences between vital and non-vital teeth depended on tooth group (more important in posterior teeth) but not on patient age. In most investigated pairs, ΔE_{00} between vital and non-vital teeth exceeded the perceptibility and acceptability thresholds.

REFERENCES

1. Chu SJ, Trushkowsky RD, Paravina RD. Dental color matching instruments and systems. Review of clinical and research aspects. *J Dent* 2010;38:e2-16.
2. Tour Savadkouhi S, Fazlyab M. Discoloration potential of endodontic sealers: A brief review. *Iran Endod J* 2016;11: 250-4.
3. Ioannidis K, Beltes P, Lambrianidis T, Kapagiannidis D, Karagiannis V. Crown discoloration induced by endodontic sealers: spectrophotometric measurement of Commission Internationale de l'Eclairage's L^* , a^* , b^* chromatic parameters. *Oper Dent* 2013;38:E1-12.
4. Mayekar SM. Shades of a color. Illusion or reality? *Dent Clin North Am* 2001;45:155-72, vii.
5. Rimmer SE, Mellor AC. Patients' perceptions of esthetics and technical quality in crowns and fixed partial dentures. *Quintessence Int* 1996;27:155-62.
6. Commission Internationale de l'Eclairage. CIE Technical Report: Colorimetry. Available from: <https://www.cdvplus.cz/file/3-publikace-cie15-2004/>
7. Manauta J, Salat A. Out. In: Manauta J, Salat A, editors. *Layers: An atlas of composite resin stratification*. Milan: Quintessenza Edizioni; 2012. Available from: <http://www.dentalbooks.bg/PDF/Layers%20Stratification%20MANAUTA.pdf>
8. Rubiño M, Garcia JA, Jiménez del Barco L, Romero J. Colour measurement of human teeth and evaluation of a colour guide. *Color Res Appl* 1994;19:19-22.
9. Zhu H, Lei Y, Liao N. Color measurements of 1,944 anterior teeth of people in southwest of China-discreption. *Zhonghua Kou Qiang Yi Xue Za Zhi* 2001;36:285-8.
10. Joiner A, Hopkinson I, Deng Y, Westland S. A review of tooth colour and whiteness. *J Dent* 2008;36:S2-7.
11. Gerlach RW, Barker ML, Sagel PA. Objective and subjective whitening response of two self-directed bleaching systems. *Am J Dent* 2002;15:7A-12A.
12. Xu Y. Research on the designing method of a special shade guide for tooth whitening. *Hua Xi Kou Qiang Yi Xue Za Zhi* 2015;33:478-83.
13. Gehrke P, Riekeberg U, Fackler O, Dhom G. Comparison of in vivo visual, spectrophotometric and colorimetric shade determination of teeth and implant-supported crowns. *Int J Comput Dent* 2009;12:247-63.
14. Da Silva JD, Park SE, Weber HP, Ishikawa-Nagai S. Clinical performance of a newly developed spectrophotometric system on tooth color reproduction. *J Prosthet Dent* 2008;99: 361-8.
15. Gómez-Polo C, Gómez-Polo M, Martínez Vázquez de Parga JA, Celemín Viñuela A. Study of the most frequent natural tooth colors in the Spanish population using spectrophotometry. *J Adv Prosthodont* 2015;7:413-22.
16. Yuan JC, Brewer JD, Monaco EA Jr, Davis EL. Defining a natural tooth color space based on a 3-dimensional shade system. *J Prosthet Dent* 2007;98:110-9.
17. O'Brien WJ, Hemmendinger H, Boenke KM, Linger JB, Groh CL. Color distribution of three regions of extracted human teeth. *Dent Mater* 1997;13:179-85.
18. Hasegawa A, Ikeda I, Kawaguchi S. Color and translucency of in vivo natural central incisors. *J Prosthet Dent* 2000;83: 418-23.
19. Ahmad Rana N, Farid H, Saad Shinwari M, Anwar A. Identification of tooth shade in various age groups of Pakistani population using Vita Easyshade. *J Khyber Coll Dent* 2014;5:25-8.
20. Elamin HO, Abubakr NH, Ibrahim YE. Identifying the tooth shade in group of patients using Vita Easyshade. *Eur J Dent* 2015;9:213-7.
21. Rodrigues S, Shetty SR, Prithviraj DR. An evaluation of shade differences between natural anterior teeth in different age groups and gender using commercially available shade guides. *J Indian Prosthodont Soc* 2012;12:222-30.

22. Pop-Ciutřila IS, Ghinea R, Perez Gomez MDM, Colosi HA, Dudea D, Badea M. Dentine scattering, absorption, transmittance and light reflectivity in human incisors, canines and molars. *J Dent* 2015;43:1116-24.
23. Goodkind RJ, Schwabacher WB. Use of a fiber-optic colorimeter for in vivo color measurements of 2830 anterior teeth. *J Prosthet Dent* 1987;58:535-42.
24. Ghinea R, Pérez MM, Herrera LJ, Rivas MJ, Yebra A, Paravina RD. Color difference thresholds in dental ceramics. *J Dent* 2010;38:e57-64.
25. Paravina RD, Ghinea R, Herrera LJ, Bona AD, Igiel C, Linninger M, Sakai M, Takahashi H, Tashkandi E, Perez Mdel M. Color difference thresholds in dentistry. *J Esthet Restor Dent* 2015;27:S1-9.
26. Gómez-Polo C, Gómez-Polo M, Celemin-Viñuela A, Martínez Vázquez De Parga JA. Differences between the human eye and the spectrophotometer in the shade matching of tooth colour. *J Dent* 2014;42:742-5.
27. Olms C, Setz JM. The repeatability of digital shade measurement-a clinical study. *Clin Oral Investig* 2013;17:1161-6.
28. Klaff D. Blending incremental and stratified layering techniques to produce an esthetic posterior composite resin restoration with a predictable prognosis. *J Esthet Restor Dent* 2001;13:101-13.
29. Odioso LL, Gibb RD, Gerlach RW. Impact of demographic, behavioral, and dental care utilization parameters on tooth color and personal satisfaction. *Compend Contin Educ Dent Suppl* 2000;;S35-41.
30. Gozalo-Diaz DJ, Lindsey DT, Johnston WM, Wee AG. Measurement of color for craniofacial structures using a 45/0-degree optical configuration. *J Prosthet Dent* 2007;97:45-53.
31. Cho BH, Lim YK, Lee YK. Comparison of the color of natural teeth measured by a colorimeter and Shade Vision System. *Dent Mater* 2007;23:1307-12.