

## Original Article



# The Fibrinogen to Mean Platelet Volume Ratio Can Predict Overall Survival of Patients with Non-Metastatic Gastric Cancer

Shubin Song , Xiliang Cong , Fengke Li , Yingwei Xue

Department of Gastrointestinal Surgery, Harbin Medical University Cancer Hospital, Harbin, China

## OPEN ACCESS

Received: Aug 15, 2018

Revised: Nov 21, 2018

Accepted: Nov 22, 2018

### Correspondence to

Yingwei Xue

Department of Gastrointestinal Surgery,  
Harbin Medical University Cancer Hospital,  
Haping Road, Harbin 150081, China.  
E-mail: xyw801@163.com

Copyright © 2018. Korean Gastric Cancer Association

This is an Open Access article distributed under the terms of the Creative Commons Attribution Non-Commercial License (<https://creativecommons.org/licenses/by-nc/4.0>) which permits unrestricted noncommercial use, distribution, and reproduction in any medium, provided the original work is properly cited.

### ORCID iDs

Shubin Song

<https://orcid.org/0000-0002-6701-9668>

Xiliang Cong

<https://orcid.org/0000-0001-7761-6514>

Fengke Li

<https://orcid.org/0000-0002-0700-8422>

Yingwei Xue

<https://orcid.org/0000-0001-5434-2696>

### Funding

Work on this article was supported by the Harbin Science and Technology Bureau Research and Development Project of Applied Technology (2017RAXXJ054) and Nn10 program of Harbin Medical University Cancer Hospital.

## ABSTRACT

**Purpose:** Fibrinogen and platelets have been reported to play important roles in tumorigenesis and cancer progression. The aim of this research was to investigate the combination of functions of fibrinogen, platelets, and mean platelet volume (MPV) in predicting the survival of patients with gastric cancer (GC).

**Materials and Methods:** A retrospective study was conducted with 1,946 patients with GC and 299 patients with benign gastric tumor to analyze their fibrinogen, platelet, and MPV levels, and other clinicopathological characteristics along with their prognoses. Several indicators were evaluated along with fibrinogen, platelets, and MPV and their prognostic abilities were assessed. Univariate and multivariate survival analyses were conducted to determine the independent risk factors for overall survival.

**Results:** Increased levels of fibrinogen, platelets, and MPV were observed with the progress of the GC stages. Elevated fibrinogen, platelets, and the combined indicators, including fibrinogen\*MPV (FM), platelet\*fibrinogen\*MPV (PFM), fibrinogen/MPV (FMR), platelet\*fibrinogen (PF), platelet\*fibrinogen/MPV (PFMR), platelet\*MPV (PM), and platelet/MPV (PMR), foreboded poor prognosis. Meanwhile fibrinogen and FMR can be considered as independent risk factors for overall survival in patients with non-metastatic GC. But these indicators can hardly predict survival of patients in stage IV.

**Conclusions:** Elevated fibrinogen, platelets, and MPV levels were in accordance with advanced stages, and fibrinogen, platelet, and MPV, in combination, can be used to predict survival of patients with non-metastatic GC. FMR was an independent prognostic factor for overall survival of patients with GC.

**Keywords:** Gastric cancer; Fibrinogen; Platelets; Mean platelet volume

## INTRODUCTION

Although the cancer-related death rate has significantly dropped since 1991, and led to more than 1.7 million deaths by the year 2012, it is still the leading cause of death [1]. Gastric cancer (GC) represents the men's third and the women's fourth leading cancer diagnosed and the third leading cause of death among both men and women in China [2]. With great progress in the diagnoses and treatments, the prognosis of GC has greatly improved, while the 5-year survival rate is still very poor

**Author Contributions**

Conceptualization: S.S.; Data curation: S.S., C.X.; Formal analysis: L.F.; Funding acquisition: X.Y.; Investigation: X.Y., C.X., L.F.; Methodology: L.F.; Project administration: X.Y.; Resources: X.Y.; Software: S.S.; Supervision: X.Y.; Validation: S.S., X.Y.; Visualization: C.X.; Writing - original draft: S.S.; Writing - review & editing: S.S.

**Conflict of Interest**

No potential conflict of interest relevant to this article was reported.

in individuals with advanced GC [3]. Conventional biomarkers, such as carcinoembryonic antigen (CEA) and carbohydrate antigen (CA) 19-9, have been inefficient because of their low sensitivity and specificity that can hardly predict overall survival accurately [4]. Therefore, novel biomarkers are needed for early diagnoses and determining accurate prognoses.

Fibrinogen and platelets play complex and varied roles in tumor formation and progression. Previous studies have reported that platelets and fibrinogen facilitate each other in protecting tumor cells from natural killer cells [5]. Satoshi Takagi reported that platelets can promote tumor growth and metastasis via direct interaction between aggrus/podoplanin and clec-2 [6]. Moreover, in our previous study, we found that serum fibrinogen levels were positively correlated with advanced tumor stage and poor survival in patients with gastric cancer undergoing gastrectomy [7]. Lian et al. [8] reported that mean platelet volume (MPV) predicted chemotherapy responses and prognoses in patients with unresectable gastric cancer. For these reasons, we conducted this study to investigate the combination of functions of fibrinogen, platelets, and MPV for predicting survival of patients with GC.

## MATERIALS AND METHODS

**Patient selection**

For the study, 1,946 consecutive histologically proven GC patients, aged from 19 to 88 (mean age: 62 years), that underwent gastrectomy between January 2007 and December 2011, and 299 patients with benign gastric tumor (BGT) between January 2000 and June 2018 at the Harbin Medical University Cancer Hospital (Heilongjiang, China) were recruited. All of these patients signed the informed consents for the use of their data for future study when admitted to our hospital and this research obtained the approval and support of the Medical Ethics Committee (approval number SHGC-1029) of Harbin Medical University Cancer Hospital.

The inclusion criteria of GC patients were as follows: all of these patients 1) underwent total or subtotal gastrectomy; 2) never received chemotherapy, radiotherapy, or other anticancer treatments; 3) survived for more than two months and none died in perioperative period; 4) never received transfusions or other blood products before blood examination; 5) died from GC or related diseases. BGT included gastric polyps, gastric leiomyoma, gastric neurofibroma, and others. Blood examinations were conducted immediately or the second day after being admitted to our hospital to assess platelet count ( $10^9/L$ ), fibrinogen (g/L), MPV (fL), CEA (ng/mL), and CA 19-9 (U/mL). The pathological staging was based on the 7<sup>th</sup> edition of the TNM-classification (for the “Tumor-Nodes-Metastases” system) by the Union for International Cancer Control/American Joint Committee on Cancer (UICC/AJCC).

For our convenience, we used the following terms: fibrinogen\*MPV (FM), platelet count\*fibrinogen\*MPV (PFM), fibrinogen count/MPV ratio (FMR), platelet count\*fibrinogen (PF), (platelet count\*fibrinogen)/MPV ratio (PFMR), platelet count\*MPV (PM), platelet count/MPV ratio (PMR).

**Patient follow-up**

These GC patients were followed-up every 3 months for the first 2 years and every 6 months in the following several years until death or June 2016. The follow-up time varied from 3 months to 9 years with an average duration of 37 months, and the overall survival time was evaluated from surgery to death.

### Statistical analysis

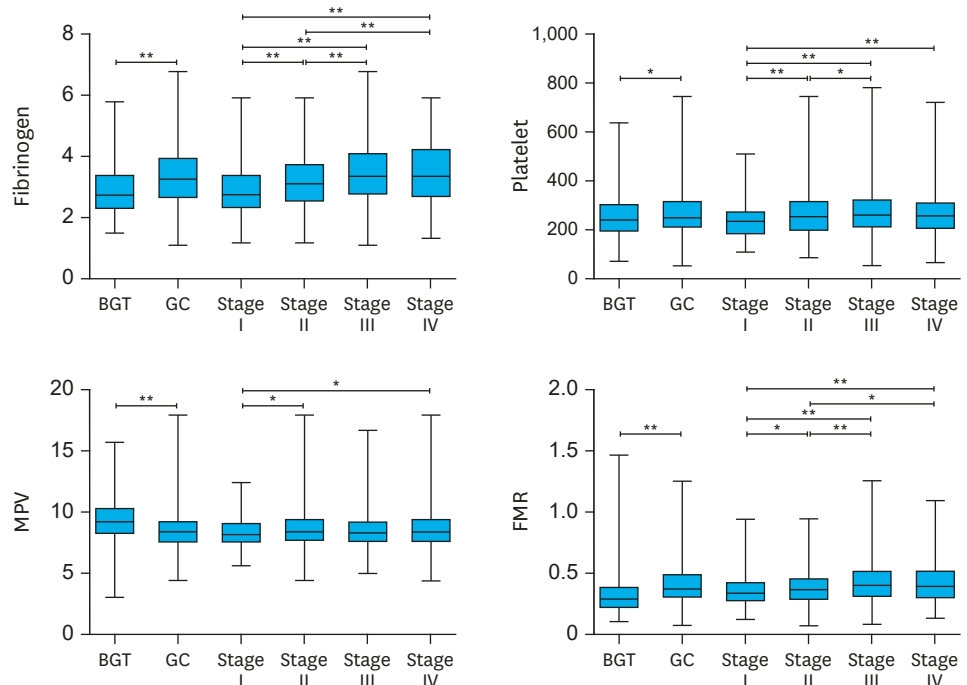
The Student's t-test was used to compare the levels of fibrinogen, platelets, MPV, and FMR among different stages. The optimal cut-off levels for fibrinogen, platelet, MPV, FMR, and PMR were determined by receiver operating curve (ROC) analysis [9]. Chi-square test was used to compare and assess the association of platelets with fibrinogen and clinicopathological characteristics. Survival curves were calculated by Kaplan-Meier survival analysis along with log-rank test. Multivariate analysis was evaluated by Cox proportional hazardous model, and all of the significant factors in the univariate analysis were used in multivariate analysis.  $P < 0.05$  was considered statistically significant. All of the statistical analyses were performed using SPSS version 17.0 (SPSS, Inc., Chicago, IL, USA).

## RESULTS

### The relationship between clinicopathological characteristics, prognosis, and biomarkers

After comparison of fibrinogen, platelet, and MPV levels at different stages, we found that the differences were significant for fibrinogen in BGT vs. GC, I vs. II, I vs. III, I vs. IV, II vs. III, and II vs. IV; platelet in BGT vs. GC, I vs. II, I vs. III, I vs. IV, and II vs. III; and MPV in BGT vs. GC, I vs. II, and I vs. IV (Fig. 1). No other significant differences were observed between any other stages. In general, the levels of fibrinogen, platelets, and MPV were increased along with stages developed.

The ROC curves and cut-off points for fibrinogen, platelet, MPV, FM, PFM, FMR, PF, PFMR, PM, and PMR of GC patients are shown in Fig. 2 and Table 1. As the cut-off point for MPV was

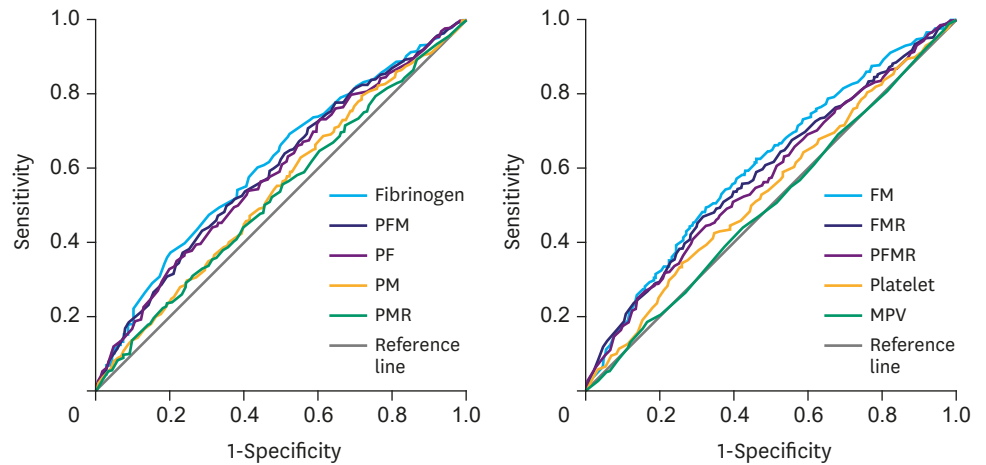


**Fig. 1.** Comparison of fibrinogen, platelet, MPV, and FMR between different stages. Data represents averages and standard deviation of plasma fibrinogen, platelet, MPV, and FMR levels in peripheral blood.

MPV = mean platelet volume; FMR = fibrinogen to mean platelet volume ratio.

\* $P < 0.05$ ; \*\* $P < 0.001$ .

Prognostic Value of Fibrinogen to MPV Ratio



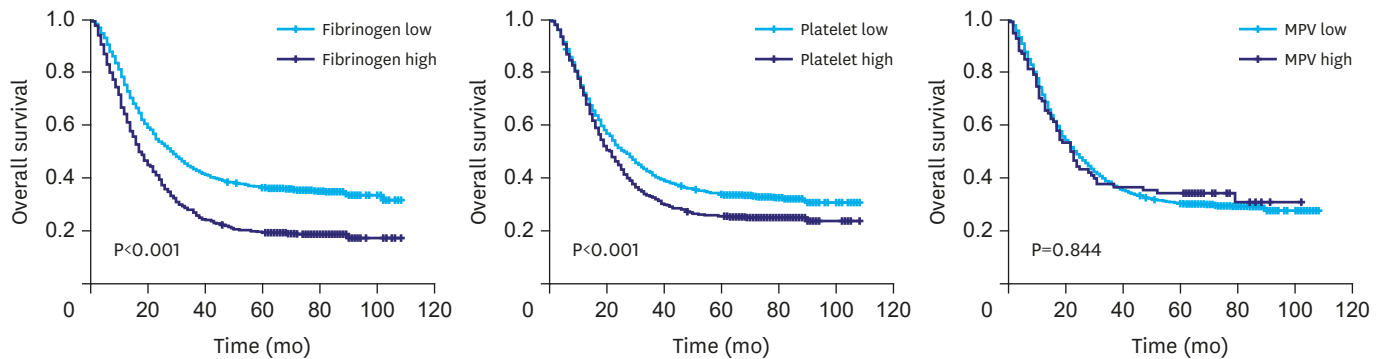
**Fig. 2.** Optimal cut-off points for these indexes were on with ROC curves. ROC = receiver operating curve; PFM = platelet\*fibrinogen\*mean platelet volume; PF = platelet\*fibrinogen; PM = platelet\*mean platelet volume; PMR = platelet to mean platelet volume ratio; FM = fibrinogen\*mean platelet volume; FMR = fibrinogen to mean platelet volume ratio; PFMR = (platelet\*fibrinogen) to mean platelet volume ratio; MPV = mean platelet volume.

**Table 1.** The optimal cut-off point for overall survival

Variables	AUC	Cut-off point	P-value
Fibrinogen	0.612	3.75	<0.001
FM	0.608	29.14	<0.001
PFM	0.594	7,965.51	<0.001
FMR	0.589	0.41	<0.001
PF	0.586	1,057.53	<0.001
PFMR	0.574	117.87	<0.001
PM	0.541	1,722.40	0.004
Platelet	0.538	290.50	0.007
PMR	0.529	28.88	0.042
MPV	0.502	-	0.910

FM = fibrinogen\*mean platelet volume; PFM = platelet\*fibrinogen\*mean platelet volume; FMR = fibrinogen to mean platelet volume ratio; PF = platelet\*fibrinogen; PFMR = (platelet\*fibrinogen) to mean platelet volume ratio; PM = platelet\*mean platelet volume; PMR = platelet to mean platelet volume ratio; MPV = mean platelet volume; AUC = area under curve.

not significant, we took the upper limit of normal level 11.0 to divide MPV. Next, in univariate survival analyses, patients with low fibrinogen and platelet levels had better prognoses, but no significant differences in MPV levels were observed (Fig. 3). So, we investigated the



**Fig. 3.** Kaplan-Meier curves for overall survival based on levels of fibrinogen, platelet, and MPV. MPV = mean platelet volume.

## Prognostic Value of Fibrinogen to MPV Ratio

**Table 2.** Relationship between clinicopathological features and fibrinogen and platelets

Variables	Fibrinogen level (g/L)				Platelet level (10 <sup>9</sup> /L)			
	≤3.75	>3.75	χ <sup>2</sup>	P	≤290.5	>290.5	χ <sup>2</sup>	P
Sex			3.102	0.078			13.798	<0.001
Female	370	141			311	200		
Male	979	456			1,002	433		
Age (yr)			21.692	<0.001			7.349	0.007
≤62	708	245			615	338		
>62	641	352			698	295		
Tumor depth			35.968	<0.001			35.315	<0.001
T1	110	13			103	20		
T2	142	41			141	42		
T3	347	153			352	148		
T4	750	390			717	423		
Lymph nodes			29.992	<0.001			14.086	0.003
N0	349	103			326	126		
N1	250	84			242	92		
N2	286	153			286	153		
N3	464	257			459	262		
Metastasis			6.654	0.01			0.133	0.715
M0	1,223	518			1,177	564		
M1	126	79			136	69		
AJCC stage			46.961	<0.001			25.595	<0.001
I	136	23			134	25		
II	360	108			324	144		
III	727	387			719	395		
IV	126	79			136	69		
Radicality			55.321	<0.001			9.564	0.002
R0	1,062	374			997	439		
R1 or R2	287	223			316	194		
Tumor size (cm)			60.413	<0.001			45.91	<0.001
≤6.16	951	312			919	344		
>6.16	398	285			394	289		
MLNR*			612.386	<0.001			6.115	0.013
≤31.5%	1,035	100			791	344		
>31.5%	314	497			522	289		
Differentiation†			0.087	0.767			0.98	0.322
Differentiated	176	139			205	110		
Undifferentiated	926	705			1,108	523		
CA 19-9 (U/mL)			14.739	<0.001			35.334	<0.001
≤37	1,085	436			1,077	444		
>37	264	161			236	189		
CEA (ng/mL)			4.573	0.032			45.491	<0.001
≤5	1,052	439			1,065	426		
>5	297	158			248	207		

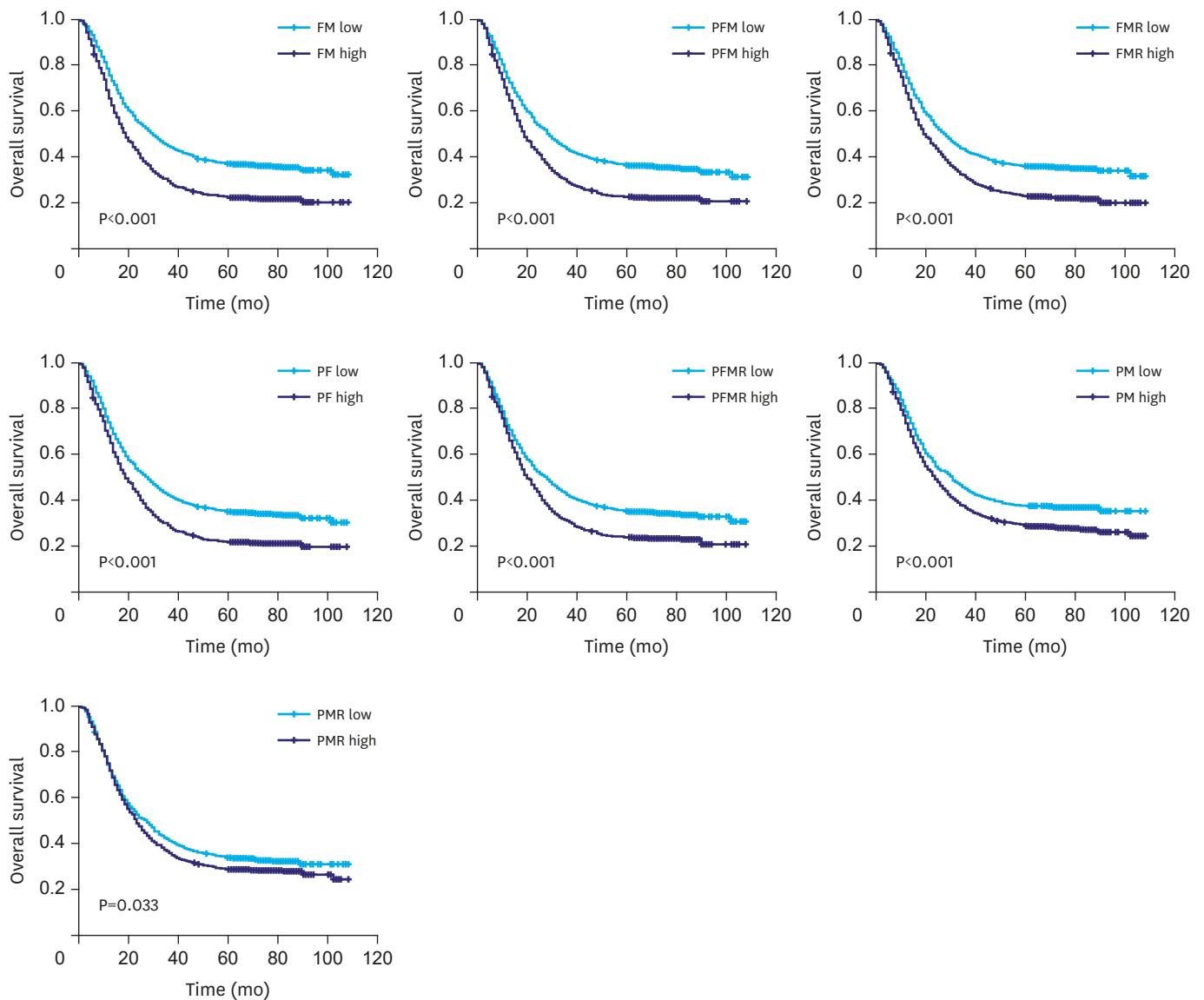
AJCC = The American Joint Committee on Cancer; MLNR = metastasis lymph node rate; CA = carbohydrate antigen; CEA = carcinoembryonic antigen.

\*The average MLNR was 31.5%; †Grades 1 and 2 were differentiated, and grades 3 and 4 were undifferentiated.

relationships between fibrinogen and platelets and clinicopathological features (**Table 2**). The patients were divided into 2 groups based on the mean age (62 years), the mean value of maximum diameter of the tumor (6.16 cm), and the mean value of MLNR (31.5%). Fibrinogen level was significantly associated with age, tumor depth (T), lymph node metastasis (N), distant metastasis (M), AJCC stage (TNM), radicality, tumor size, metastasis lymph node rate (MLNR), CA19-9, and CEA ( $P_{\text{all}} < 0.05$ ). Platelet level was significantly associated with sex, age, T, N, TNM, radicality, tumor size, MLNR, CA 19-9, and CEA ( $P_{\text{all}} < 0.05$ ), and was not significant for distant metastasis ( $P = 0.715$ ).

**The relationship between indexes, clinicopathological characteristics, and clinical prognosis**

In the univariate survival analyses, we found that patients with low FM, PFM, FMR, PF, PFMR, PM, and PMR exhibited better prognoses and longer overall survival times ( $P_{all} < 0.05$ ) (Fig. 4, Table 3). Additionally, age, T, N, M, TNM stage, radicality, tumor size, MLNR differentiation, CA 19-9, and CEA were all associated with overall survival times. When we included age, T, N, M, TNM stage, radicality, tumor size, MLNR, differentiation, CA19-9, CEA, fibrinogen and FMR into multivariate analysis, the results showed that T, N, M, TNM stage, radicality, tumor size, MLNR, fibrinogen, and FMR were all independent risk factors affecting patient survival ( $P_{all} < 0.05$ ).



**Fig. 4.** Kaplan-Meier curves for overall survival based on FM, PFM, FMR, PF, PFMR, PM, and PMR. FM = fibrinogen\*mean platelet volume; PFM = platelet\*fibrinogen\*mean platelet volume; FMR = fibrinogen to mean platelet volume ratio; PF = platelet\*fibrinogen; PFMR = (platelet\*fibrinogen) to mean platelet volume ratio; PM = platelet\*mean platelet volume; PMR = platelet to mean platelet volume ratio.

**Table 3.** Univariate and multivariate analysis of factors for overall survival

Factors	Univariate K-M	Multivariate Cox	
	P-value	HR (95% CI)	P-value
Sex	0.655		
Age (yr)	0.018	1.098 (0.985–1.224)	0.091
Tumor depth	<0.001	1.221 (1.101–1.355)	<0.001
Lymph nodes	<0.001	1.250 (1.136–1.377)	<0.001
Distant metastasis	<0.001	0.665 (0.553–0.878)	0.004
AJCC stage	<0.001	2.088 (1.687–2.585)	<0.001
Radicality	<0.001	2.096 (1.820–2.414)	<0.001
Tumor size (cm)	<0.001	1.305 (1.160–1.468)	<0.001
MLNR	<0.001	1.291 (1.101–1.514)	0.002
Differentiation	<0.001	1.156 (0.988–1.351)	0.070
CA 19-9 (U/mL)	0.019	0.993 (0.873–1.131)	0.919
CEA (ng/mL)	0.002	1.125 (0.993–1.274)	0.065
Fibrinogen	<0.001	1.290 (1.100–1.513)	0.002
FM	<0.001		
PFM	<0.001		
FMR	<0.001	0.842 (0.723–0.981)	0.027
PF	<0.001		
PFMR	<0.001		
PM	<0.001		
Platelet	<0.001		
PMR	0.035		

HR = hazard ratio; CI = confidence interval; AJCC = The American Joint Committee on Cancer; MLNR = metastasis lymph node rate; CA = carbohydrate antigen; CEA = carcinoembryonic antigen; FM = fibrinogen\*mean platelet volume; PFM = platelet\*fibrinogen\*mean platelet volume, FMR = fibrinogen to mean platelet volume ratio; PF = platelet\*fibrinogen; PFMR = (platelet\*fibrinogen) to mean platelet volume ratio; PM = platelet\*mean platelet volume; PMR = platelet to mean platelet volume ratio.

**Table 4.** Univariate analysis of factors for overall survival at different stages

Factors	P-value			
	I	II	III	IV
Fibrinogen	0.053	0.072	<0.001	0.932
FM	0.700	0.247	<0.001	0.145
PFM	0.502	0.545	0.001	0.695
PF	0.186	0.130	0.022	0.846
PFMR	0.766	0.121	0.253	0.069
PM	0.787	0.759	0.371	0.958
Platelet	0.888	0.272	0.448	0.500
PMR	0.864	0.766	0.861	0.044
FMR	0.010	0.036	0.018	0.145

FM = fibrinogen\*mean platelet volume; PFM = platelet\*fibrinogen\*mean platelet volume; PF = platelet\*fibrinogen; PFMR = (platelet\*fibrinogen) to mean platelet volume ratio; PM = platelet\*mean platelet volume; PMR = platelet to mean platelet volume ratio; FMR = fibrinogen to mean platelet volume ratio.

Finally, we examined the value of these indicators for different stages (**Table 4**). Fibrinogen, FM, PFM, and PF were all significant at stage III and PMR was significant at stage IV. Only FMR was significant at stages I, II, and III. Kaplan-Meier survival curves are shown in **Fig. 5**. The comparisons between BGT and GC and their stages were shown in **Fig. 1** and the comparisons were significant in BGT vs. GC, I vs. II, I vs. III, I vs. IV, II vs. III, and II vs. IV.

## DISCUSSION

In this study, we found that plasma levels of fibrinogen and platelets were significantly different at various stages and played important influence on prognosis, and this corroborated with previous reports [6,10]. Fibrinogen and platelets had crucial effect on the

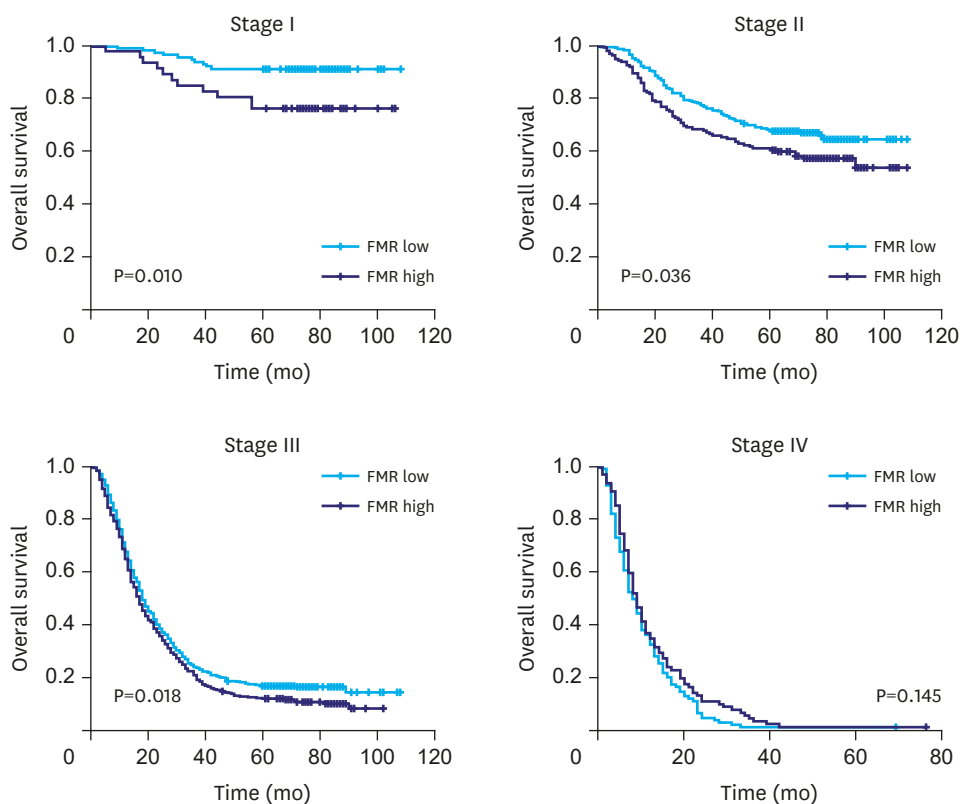


Fig. 5. Kaplan-Meier curves for overall survival based on FMR in different stages. FMR = fibrinogen to mean platelet volume ratio.

tumorigenesis, tumor progression, and prognosis. In our previous study, we had found that platelet level was closely associated with tumor-induced systemic inflammatory response (SIR) and prognosis of patients with advanced GC [11]. As a main indicator of platelet activation status, MPV has also been reported to be associated with prognosis of malignant diseases [12,13]. Therefore, it is essential to combine fibrinogen, platelet, and MPV together to reveal their combined prognostic significance. This investigation was the first successful attempt to appraise the prognosis of patients with GC based on so many indicators obtained by evaluation of fibrinogen, platelet, and MPV levels.

As a major acute reactive phase protein produced by liver, fibrinogen levels increase in the event of malignancies or SIR [14], and its level would decrease after surgery and increase again at the time of recurrence [10]. The hyperfibrinogenemia was also reported to affect prognosis in many other malignancies, such as non-small-cell lung cancer [15], esophageal cancer [16], and breast cancer [17]. Fibrinogen promoted lymph node metastasis by interacting with IL-6 and platelets [18]. Mikami et al. [19] reported that platelets can promote the proliferation of gastric cancer cells, which, in turn, can be inhibited by antiplatelet antibodies, meanwhile mir-4670-5p might be involved in this process. Goel et al.'s [20] experiments also showed that the degree of aspirin-inhibited colon cancer cells was dependent on the mismatch repair (MMR) status. Tumor cells could release high-mobility group box1 protein, and when they escape from the primary tumor, could hang together with fibrinogen and platelets and cluster around to dodge the innate immune systems, especially NK cells, and then, the tumor cells could reside in the vasculature of distant organ [21-23]. The level of MPV, an intimation of platelet size, reflected the activity of the platelets, and the increase in MPV



was reported in myocardial infarction and cancers [24,25]. But in our study, we found that the MPV was significantly higher in BGT than that in GC and it increased further along with cancer progression. The exact mechanisms of how fibrinogen and platelets promote tumor progression were still controversial.

In the univariate analysis, fibrinogen, platelet, FM, PFM, FMR, PF, PFMR, PM, and PMR were all significant prognostic factors. When incorporated into Cox multivariate analysis, fibrinogen, PFMR, FM, PMR, and FMR all showed prognostic abilities. This may indicate that fibrinogen, platelet, and MPV can be used in combination as indicators of prognosis. But when we divided these patients according to the AJCC TNM stage, FMR showed prognostic ability only in stages I, II, and III; PMR showed prognostic ability only in stage IV; and fibrinogen, FM, PFM, and PF showed prognostic ability only in stage III. This indicated that FMR may be a superior biomarker for predicting survival of patients with GC. In addition, although fibrinogen and platelet facilitated infiltration and migration of tumor cells, we speculated that whether distant metastasis would develop didn't depend on the level of fibrinogen and platelet. These indicators may be more suitable to predict survival in non-metastasis GC patients.

The current study has some unavoidable constraints. First, it is a single-center and retrospective research with some uncertain bias. Secondly, the effect of chemotherapy on survival and the relationships between chemotherapy and these biomarkers were not evaluated in this research. However, within these limitations, our findings still showed the prognostic significance of these biomarkers. Although the principle may still be controversial, with their merits of convenience and attractive price without any additional injuries, these biomarkers should be included in prognostic risk stratification models and clinical applications.

In conclusion, elevated levels of fibrinogen and platelets are associated with advanced stages and poor prognosis, and fibrinogen, platelet, and MPV can be combined together for predicting survival of patients with GC. Meanwhile, fibrinogen and FMR can be considered as independent risk factors for overall survival in non-metastatic GC. This will help clinicians to formulate therapeutic strategies and provide better cure to the patients.

## ACKNOWLEDGMENTS

We thank Xiliang Cong, Sen Li, Yongle Zhang, Li Chen, and Chunfeng Li for data collection and analysis.

## REFERENCES

1. Siegel RL, Miller KD, Jemal A. Cancer statistics, 2016. *CA Cancer J Clin* 2016;66:7-30.  
[PUBMED](#) | [CROSSREF](#)
2. Chen W, Zheng R, Baade PD, Zhang S, Zeng H, Bray F, et al. Cancer statistics in China, 2015. *CA Cancer J Clin* 2016;66:115-132.  
[PUBMED](#) | [CROSSREF](#)
3. Wang WH, Huang JQ, Zheng GF, Lam SK, Karlberg J, Wong BC. Non-steroidal anti-inflammatory drug use and the risk of gastric cancer: a systematic review and meta-analysis. *J Natl Cancer Inst* 2003;95:1784-1791.  
[PUBMED](#) | [CROSSREF](#)

4. Mroczko B, Groblewska M, Łukaszewicz-Zajac M, Bandurski R, Kedra B, Szmitkowski M. Pre-treatment serum and plasma levels of matrix metalloproteinase 9 (MMP-9) and tissue inhibitor of matrix metalloproteinases 1 (TIMP-1) in gastric cancer patients. *Clin Chem Lab Med* 2009;47:1133-1139.  
[PUBMED](#) | [CROSSREF](#)
5. Zheng S, Shen J, Jiao Y, Liu Y, Zhang C, Wei M, et al. Platelets and fibrinogen facilitate each other in protecting tumor cells from natural killer cytotoxicity. *Cancer Sci* 2009;100:859-865.  
[PUBMED](#) | [CROSSREF](#)
6. Takagi S, Sato S, Oh-hara T, Takami M, Koike S, Mishima Y, et al. Platelets promote tumor growth and metastasis via direct interaction between Aggrus/podoplanin and CLEC-2. *PLoS One* 2013;8:e73609.  
[PUBMED](#) | [CROSSREF](#)
7. Yu X, Hu F, Yao Q, Li C, Zhang H, Xue Y. Serum fibrinogen levels are positively correlated with advanced tumor stage and poor survival in patients with gastric cancer undergoing gastrectomy: a large cohort retrospective study. *BMC Cancer* 2016;16:480.  
[PUBMED](#) | [CROSSREF](#)
8. Lian L, Xia YY, Zhou C, Shen XM, Li XL, Han SG, et al. Mean platelet volume predicts chemotherapy response and prognosis in patients with unresectable gastric cancer. *Oncol Lett* 2015;10:3419-3424.  
[PUBMED](#) | [CROSSREF](#)
9. Greiner M, Pfeiffer D, Smith RD. Principles and practical application of the receiver-operating characteristic analysis for diagnostic tests. *Prev Vet Med* 2000;45:23-41.  
[PUBMED](#) | [CROSSREF](#)
10. Suzuki T, Shimada H, Nanami T, Oshima Y, Yajima S, Ito M, et al. Hyperfibrinogenemia is associated with inflammatory mediators and poor prognosis in patients with gastric cancer. *Surg Today* 2016;46:1394-1401.  
[PUBMED](#) | [CROSSREF](#)
11. Song S, Li C, Li S, Gao H, Lan X, Xue Y. Derived neutrophil to lymphocyte ratio and monocyte to lymphocyte ratio may be better biomarkers for predicting overall survival of patients with advanced gastric cancer. *Onco Targets Ther* 2017;10:3145-3154.  
[PUBMED](#) | [CROSSREF](#)
12. Inagaki N, Kibata K, Tamaki T, Shimizu T, Nomura S. Prognostic impact of the mean platelet volume/platelet count ratio in terms of survival in advanced non-small cell lung cancer. *Lung Cancer* 2014;83:97-101.  
[PUBMED](#) | [CROSSREF](#)
13. Kurt M, Onal IK, Sayilir AY, Beyazit Y, Oztas E, Kekilli M, et al. The role of mean platelet volume in the diagnosis of hepatocellular carcinoma in patients with chronic liver disease. *Hepatogastroenterology* 2012;59:1580-1582.  
[PUBMED](#) | [CROSSREF](#)
14. Zhu LR, Li J, Chen P, Jiang Q, Tang XP. Clinical significance of plasma fibrinogen and D-dimer in predicting the chemotherapy efficacy and prognosis for small cell lung cancer patients. *Clin Transl Oncol* 2016;18:178-188.  
[PUBMED](#) | [CROSSREF](#)
15. Sheng L, Luo M, Sun X, Lin N, Mao W, Su D. Serum fibrinogen is an independent prognostic factor in operable nonsmall cell lung cancer. *Int J Cancer* 2013;133:2720-2725.  
[PUBMED](#) | [CROSSREF](#)
16. Matsuda S, Takeuchi H, Kawakubo H, Fukuda K, Nakamura R, Takahashi T, et al. Cumulative prognostic scores based on plasma fibrinogen and serum albumin levels in esophageal cancer patients treated with transthoracic esophagectomy: comparison with the Glasgow prognostic score. *Ann Surg Oncol* 2015;22:302-310.  
[PUBMED](#) | [CROSSREF](#)
17. Mei Y, Zhao S, Lu X, Liu H, Li X, Ma R. Clinical and prognostic significance of preoperative plasma fibrinogen levels in patients with operable breast cancer. *PLoS One* 2016;11:e0146233.  
[PUBMED](#) | [CROSSREF](#)
18. Yamaguchi T, Yamamoto Y, Yokota S, Nakagawa M, Ito M, Ogura T. Involvement of interleukin-6 in the elevation of plasma fibrinogen levels in lung cancer patients. *Jpn J Clin Oncol* 1998;28:740-744.  
[PUBMED](#) | [CROSSREF](#)
19. Mikami J, Kurokawa Y, Takahashi T, Miyazaki Y, Yamasaki M, Miyata H, et al. Antitumor effect of antiplatelet agents in gastric cancer cells: an in vivo and in vitro study. *Gastric Cancer* 2016;19:817-826.  
[PUBMED](#) | [CROSSREF](#)
20. Goel A, Chang DK, Ricciardiello L, Gasche C, Boland CR. A novel mechanism for aspirin-mediated growth inhibition of human colon cancer cells. *Clin Cancer Res* 2003;9:383-390.  
[PUBMED](#)

21. Palumbo JS, Talmage KE, Massari JV, La Jeunesse CM, Flick MJ, Kombrinck KW, et al. Platelets and fibrin(ogen) increase metastatic potential by impeding natural killer cell-mediated elimination of tumor cells. *Blood* 2005;105:178-185.  
[PUBMED](#) | [CROSSREF](#)
22. Gay LJ, Felding-Habermann B. Contribution of platelets to tumour metastasis. *Nat Rev Cancer* 2011;11:123-134.  
[PUBMED](#) | [CROSSREF](#)
23. Yu LX, Yan L, Yang W, Wu FQ, Ling Y, Chen SZ, et al. Platelets promote tumour metastasis via interaction between TLR4 and tumour cell-released high-mobility group box1 protein. *Nat Commun* 2014;5:5256.  
[PUBMED](#) | [CROSSREF](#)
24. Davi G, Patrono C. Platelet activation and atherothrombosis. *N Engl J Med* 2007;357:2482-2494.  
[PUBMED](#) | [CROSSREF](#)
25. Oge T, Yalcin OT, Ozalp SS, Isikli T. Platelet volume as a parameter for platelet activation in patients with endometrial cancer. *J Obstet Gynaecol* 2013;33:301-304.  
[PUBMED](#) | [CROSSREF](#)