



Ceramic molar crown reproducibility by digital workflow manufacturing: An *in vitro* study

Il-Do Jeong¹, Woong-Chul Kim^{2*}, Jinyoung Park², Chong-Myeong Kim², Ji-Hwan Kim²

¹Institute for Health Science, Korea University, Seoul, Republic of Korea

²Department of Dental Laboratory Science and Engineering, Korea University, Seoul, Republic of Korea

PURPOSE. This *in vitro* study aimed to analyze and compare the reproducibility of zirconia and lithium disilicate crowns manufactured by digital workflow. **MATERIALS AND METHODS.** A typodont model with a prepped upper first molar was set in a phantom head, and a digital impression was obtained with a video intraoral scanner (CEREC Omnicam; Sirona GmbH), from which a single crown was designed and manufactured with CAD/CAM into a zirconia crown and lithium disilicate crown (n=12). Reproducibility of each crown was quantitatively retrieved by superimposing the digitized data of the crown in 3D inspection software, and differences were graphically mapped in color. Areas with large differences were analyzed with digital microscopy. Mean quadratic deviations (RMS) quantitatively obtained from each ceramic group were statistically analyzed with Student's t-test ($\alpha=.05$). **RESULTS.** The RMS value of lithium disilicate crown was 29.2 (4.1) μm and 17.6 (5.5) μm on the outer and inner surfaces, respectively, whereas these values were 18.6 (2.0) μm and 20.6 (5.1) μm for the zirconia crown. Reproducibility of zirconia and lithium disilicate crowns had a statistically significant difference only on the outer surface ($P<.001$). The outer surface of lithium disilicate crown showed over-contouring on the buccal surface and under-contouring on the inner occlusal surface. The outer surface of zirconia crown showed both over- and under-contouring on the buccal surface, and the inner surface showed under-contouring in the marginal areas. **CONCLUSION.** Restoration manufacturing by digital workflow will enhance the reproducibility of zirconia single crowns more than that of lithium disilicate single crowns. [*J Adv Prosthodont* 2017;9:252-6]

KEYWORDS: Digital workflow manufacturing; Ceramic crown reproducibility; Lithium disilicate; Zirconia

INTRODUCTION

Current digital workflow technologies for manufacturing dental restorations include both the digital impressions formed by intraoral scanning and the synthesis of 3D objects by additive or subtractive manufacturing. In particular, the process of designing restorations by intraoral scan-

ning (CAD) and subsequent manufacturing with subtractive technologies (CAM)¹ is much more comfortable for patients than conventional impressions, not only allowing easy preparation modification in real time² but also enabling the use of advanced ceramic materials with refined composition and microstructure.³ Furthermore, when using in-house milling units, defective teeth can be restored in a single appointment.⁴

However, despite such improvements of additive manufacturing, subtractive technologies remain the most advanced and common manufacturing process of dental ceramics.⁵ Notably, lithium disilicate and zirconia blanks are common materials for restoration manufacturing processes using subtractive technologies and are widely used by dentists and dental technicians. Lithium disilicate ceramics were problematic because they initially displayed irreparable microcracks, low chemical resistance, and undesirable transparencies,⁶⁻⁹ but current restorations made with lithium disilicate ceramics have many advantages such as high flexural

Corresponding author:

Woong-Chul Kim

Department of Dental Laboratory Science and Engineering, College of Health Science, Korea University

145, Anam-ro, Seongbuk-gu, Seoul 02841, Republic of Korea

Tel. +82232905665; e-mail, kuc2842@korea.ac.kr

Received October 13, 2016 / Last Revision December 20, 2016 /

Accepted March 21, 2017

© 2017 The Korean Academy of Prosthodontics

This is an Open Access article distributed under the terms of the Creative Commons Attribution Non-Commercial License (<http://creativecommons.org/licenses/by-nc/3.0>) which permits unrestricted non-commercial use, distribution, and reproduction in any medium, provided the original work is properly cited.

strength, exceptional aesthetic design, and tolerable wear resistance.¹⁰⁻¹² Furthermore, the status of pre-crystallized lithium disilicate ceramics is receptive to subtractive technologies and is thus very useful.¹³ Zirconia ceramic is mechanically the most desirable ceramic in all dental fields.¹³ Restorations manufactured from zirconia ceramics are made from partially sintered zirconia blanks, soft milled by CAD/CAM technology.¹⁴ The use of partially sintered zirconia blanks ensures quicker and easier milling and also lowers the wear and tear of milling tools.¹³

Restoration manufacturing using CAD/CAM technology partially replaces the currently popular lost-wax technique. In particular, this technology, by subtractive manufacturing, removes the contraction of wax materials, burn outs, deflection during casting, and other factors affecting the proficiency of manufacturing and ultimately restoration reproducibility.⁵ However, restoration manufacturing using CAD/CAM systems still has errors such as inaccuracy, tool wear, and tool transformation.¹⁵ In addition, if digital impressions by intraoral scanning are applied, errors will arise from the variables used to obtain data.¹⁶ Therefore, although digital workflow using CAD/CAM technology has clear advantages over current methods, its restoration reproducibility, which is a measure of fabrication reliability, is still unclear. Moreover, there have been no qualitative or quantitative analyses of the reproducibility of restorations made by digital workflow.

The purpose of this *in vitro* research was to estimate the reproducibility of digitally manufactured ceramic single crowns. This was achieved by analyzing the differences between 3D representations of each crown. The null hypothesis was that there is no significant difference between the reproducibility of single crowns made of lithium disilicate and zirconia blank.

MATERIALS AND METHODS

A maxillary right first molar typodont tooth prepped with a 1.5 mm occlusal height reduction, 1.5 mm axial reduction, and at least 1.0 mm wide deep chamfer was prepared (ANKA-4 V CER; Frasco GmbH, Tettang, Germany). The prepared tooth was mounted on a typodont model, and then the typodont was fixed in a simulated patient position on a phantom head. Digital impressions were obtained using a noncoating video intraoral scanner (CEREC Omnicam; Sirona Dental Systems GmbH, Bensheim, Germany), carried out by a single dentist proficient with the systems; the den-

tist performed scans following the scanning protocols of the manufacturer at a temperature of $23 \pm 2^\circ\text{C}$. Digital impressions obtained were sent by a data upload program (CEREC Connect Software 4.3; Sirona Dental Systems GmbH, Bensheim, Germany) to a dental design software (CEREC inLab software; Sirona Dental Systems GmbH, Bensheim, Germany) used to manufacture restorations.

The ideal direction for inserting a restoration and the preparation margin were established for the abutment tooth of the digital impression by using the dental design software. Subsequently, the parameters provided by the manufacturer for the smallest thickness needed for the anatomical crown shape in the program database were applied, and the CAD design for the restoration was completed. The finished CAD dataset was used for fabricating both lithium disilicate (IPS e.max CAD; Ivoclar Vivadent AG, Schaan, Liechtenstein) and zirconia blank (Sirona inCoris TZI; Sirona Dental Systems GmbH, Bensheim, Germany) single crowns. Four-axis milling machines (inLab MC XL; Sirona Dental Systems GmbH, Bensheim, Germany) were used to fabricate pre-sintered zirconia and pre-crystallized lithium disilicate crowns. After the milling, pre-sintered zirconia crowns were carefully removed from their holders by diamond disks, and the attached areas were ground to a smooth finish with tungsten carbide burs. Pre-crystallized lithium disilicate crowns were also removed from their holders by diamond disks, and the attached areas were ground with fine-grained diamond ($< 60 \mu\text{m}$). Firing schedules for the sintering of pre-sintered zirconia crowns and crystallization of pre-crystallized lithium disilicate crown are listed in Table 1.

All manufactured ceramic crowns were digitized using a reference scanner (Smartscan R5; Breuckmann GmbH, Meersburg, Germany). This apparatus obtained data from two cameras set at nonsymmetric angles such as 10° , 20° , and 30° ; thus the apparatus could measure previously difficult areas and has an accuracy of $7 \mu\text{m}$. Both outer and inner surfaces of all ceramic crowns were computed by the STL dataset format by the reference scanner.

For each digitalized zirconia and lithium disilicate crown dataset, all possible combinations of the two scanned files were chosen, and the files were superimposed (*i.e.*, ${}_{12}C_2$, $n = 66$) on each other (Control; Geomagic GmbH, Rock Hill, SC, USA). For each combination, the root mean square deviation and color-coded difference images were used as quantitative and qualitative dimensional differences between ceramic datasets, respectively. Additionally, areas showing the highest and lowest dimensional difference in 3D analysis

Table 1. Firing schedules of CAD/CAM ceramic materials

Crown material	Furnace	Starting temperature ($^\circ\text{C}$)	Firing temperature ($^\circ\text{C}$)	Heating rate ($^\circ\text{C}/\text{min}$)	Batch number
Lithium disilicate	Programat P310	403	820 and 840	90 and 30	S24491
Zirconia	Sirona inFire HTC	90	1500	12	T01838

were observed using a digital microscope (KH-7700; Hirox, Hackensack, NJ, USA).

The IBM SPSS 21 software package (IBM SPSS Inc., Chicago, IL, USA) was used in calculating the mean (RMS), standard deviations, and 95% confidence intervals of the reproducibility of zirconia and lithium disilicate crowns. Saphiro-Wilk test and Levene's test were used to confirm the normality and homoscedasticity, and independent samples t-test was used to analyze significant differences in the RMS values of zirconia and lithium disilicate crowns. Statistical significance was set at $P < .05$. Power analysis was performed to calculate the sample size needed for the experiment. Among two experimental groups with an effect of 1.25, an alpha of 0.05, and a power of 0.80, 24 samples (12 per group) were needed altogether.

RESULTS

The ceramic crown materials showed no statistically significant difference in the reproducibility on the inner surface, but the difference was statistically significant on the outer surface (Table 2).

The prominent color-coded difference images obtained from the qualitative reproducibility analysis of each crown group (Fig. 1) showed that, on the outer surface of lithium disilicate crown, an over-contouring of +50 to +150 μm occurred primarily on the buccal surface and an under-contouring of -50 to -100 μm on the inner occlusal surface. The outer surface of zirconia crown had both an over-contouring of +50 to +150 μm and an under-contouring of -50 to -150 μm on the buccal surface, whereas the inner surface

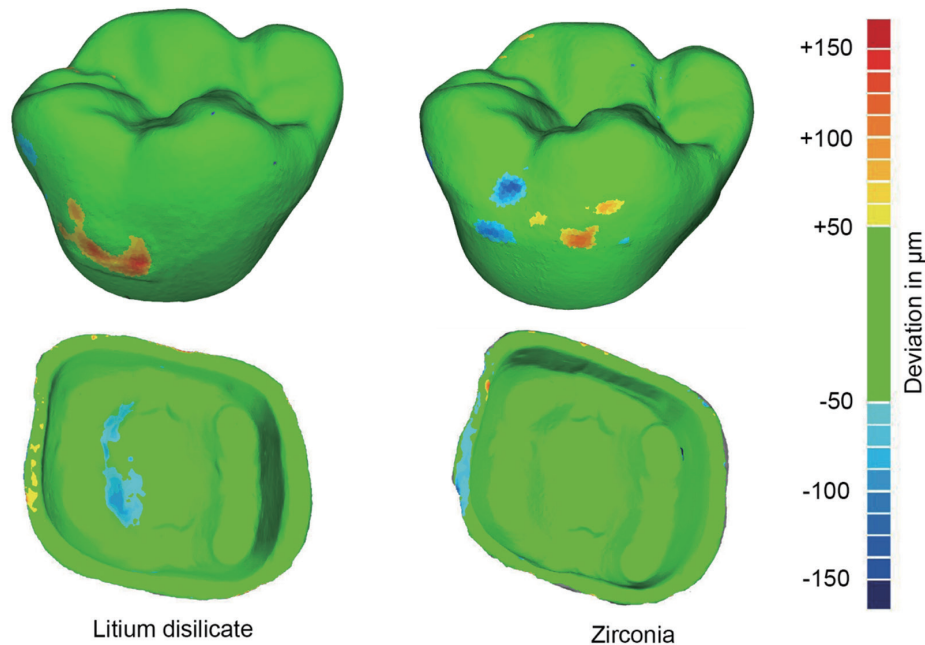


Fig. 1. Color-coded difference images for qualitative reproducibility deviation analysis of inner and outer surfaces.

Table 2. Results of reproducibility RMS for outer and inner surfaces according to crown material (in μm)

Crown material	Outer surface			Inner surface		
	Mean	SD	95% CI	Mean	SD	95% CI
Lithium disilicate	29.2 ^a	4.1	26.2 - 32.1	17.6 ^a	5.5	13.6 - 21.6
Zirconia	18.6 ^b	2.0	17.2 - 20.0	20.6 ^a	5.1	16.9 - 24.2

^{a,b} The superscript letters within each column indicate statistically significant differences ($P < .05$) obtained using the t-test for independent samples; CI: confidence interval, SD: standard deviation

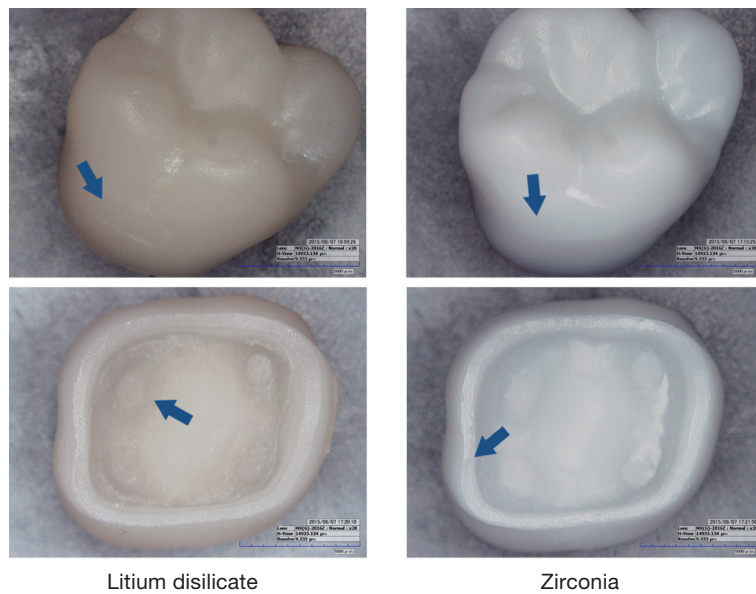


Fig. 2. Digital microscope images of outer and inner surfaces of zirconia and lithium disilicate crowns (blue arrows indicate most significantly different areas in color-coded difference images of Fig. 1).

had an under-contouring of -50 to $-100\ \mu\text{m}$ on the marginal area.

In addition to the qualitative reproducibility analyses of the 3D data of each crown group, the crowns were directly observed using a digital microscope (Fig. 2). Over-contoured and under-contoured areas were observed to be identical to the areas seen in the color-coded difference images.

DISCUSSION

This *in vitro* study provides information about the reproducibility of manufacturing lithium disilicate and zirconia single crowns by digital workflow. Data of the reproducibility of restoration manufacturing were gathered by applying a method for evaluating the accuracy of digitizing devices.^{17,18} The reproducibility of lithium disilicate single crowns and that of zirconia blank single crowns differed in a statistically significant way, thereby disproving the null hypothesis.

In a previous study on the accuracy of restoration manufacturing, the trueness of partial crowns manufactured by chairside CAD/CAM milling processes were also analyzed.¹⁹ The study, similarly to this one, also used digital workflow and intraoral scanning to manufacture restorations using CAD/CAM milling. However, the past study did not analyze the accuracy of the whole digital workflow but only the process of CAD/CAM milling by 3D superposition of the data from digitizing restorations. In addition, the intraoral scanner used to digitize the restorations was imprecise, and errors that occurred in trueness values and precision (reproducibility) due to digitization were not measured. Therefore, this study used a scanner with high precision to reduce errors in digitization, and reproducibility could be inspected

over the whole digital workflow manufacturing process by studying intraoral scanning. Thus, the accuracy of the whole workflow was analyzed.

The intraoral scanner used in this study not only takes continuous images and immediately renders them in three dimensions, but also shows the images using real color because no powders are needed.²⁰ The CAD/CAM milling unit used for milling was used to minimize damage to the ceramic block by an intermittent-touch process using a water-soluble lubricant in an environment of constant water-cooled sprays.²¹ The previously mentioned two procedures are commonly used for chairside CAD/CAM milling processes.

A recent study analyzed the reproducibility of heat-pressed ceramics.²² The study used the lost-wax technique and heat-pressing technique, both of which are commonly used, to manufacture a lithium disilicate partial crown. The crown's marginal reproducibility and internal reproducibility were reported to be $23\ \mu\text{m}$ and $14\ \mu\text{m}$, respectively, and the results were similar to those of the reproducibility values of the inner surface of lithium disilicate crown in this study.

The over-contouring on the outer buccal surface of the lithium disilicate crown where it was attached to the holder (Fig. 1) was presumably caused by errors occurred when the holder was detached. This was confirmed by a microscopic analysis of the real model (Fig. 2). The outer surface of zirconia crown similarly had over- and under-contouring where the holder was affixed (Fig. 1); the cause was again the detachment of the holder, as confirmed by the microscopic analysis (Fig. 2). The detachment of the holder was done by the technician, and therefore these errors produced in the crowns are not attributable to digital workflow. The

under-contouring on the inner occlusal surface of the lithium disilicate crown (Fig. 1) seemed to be a milling error; this was confirmed by the microscopic analysis, which showed clear uneven milling in the real model (Fig. 2). The small errors in the inner marginal area of the zirconia crown (Fig. 1) were attributed by the microscopic analysis to chipping near the acute edges (Fig. 2). This chipping phenomenon of zirconia crown marginal area is thought to originate from the initiation and propagation of cracks and fissures during milling.²³ On the other hand, the marginal area of the lithium disilicate crown is less affected by the ceramic's chipping. Thus, the marginal area of a crown can be recreated more accurately using lithium disilicate.

This study had several limitations. Although the acrylic resin tooth of the typodont model had similar light reflection property as natural dentition, the chemical composition, surface structure, and physical properties differed. Furthermore, the *in vitro* environment in which the impression was obtained was not similar to the actual mouth. Ultimately, only reproducibility, which is a measure of precision of digital workflow, was analyzed, whereas trueness was not.

CONCLUSION

Restoration manufacturing by digital workflow used in this study will have better reproducibility of single crowns made of zirconia blanks than lithium disilicate ones. However, for the margin area, lithium disilicate crowns will have a more detailed structure than zirconia crowns.

ORCID

Il-Do Jeong <https://orcid.org/0000-0001-6245-2967>

Woong-Chul Kim <https://orcid.org/0000-0002-6730-4960>

Jinyoung Park <https://orcid.org/0000-0002-8762-6908>

Ji-Hwan Kim <https://orcid.org/0000-0003-3889-2289>

REFERENCES

1. Beuer F, Schweiger J, Edelhoff D. Digital dentistry: an overview of recent developments for CAD/CAM generated restorations. *Br Dent J* 2008;204:505-11.
2. Henkel GL. A comparison of fixed prostheses generated from conventional vs digitally scanned dental impressions. *Compend Contin Educ Dent* 2007;28:422-4, 426-8, 430-1.
3. Raigrodski AJ. Contemporary materials and technologies for all-ceramic fixed partial dentures: a review of the literature. *J Prosthet Dent* 2004;92:557-62.
4. Schaefer O, Decker M, Wittstock F, Kuepper H, Guentsch A. Impact of digital impression techniques on the adaption of ceramic partial crowns *in vitro*. *J Dent* 2014;42:677-83.
5. Schaefer O, Kuepper H, Thompson GA, Cachovan G, Hefti AF, Guentsch A. Effect of CNC-milling on the marginal and internal fit of dental ceramics: a pilot study. *Dent Mater* 2013; 29:851-8.
6. Stookey SD. Catalyzed crystallization of glass in theory and practice. *Ind Eng Chem* 1959;51:805-8.
7. McMillan PW, Phillips SV, Partridge G. The structure and properties of a lithium zinc silicate glass-ceramic. *J Mater Sci* 1966;1:269-79.
8. Freiman SW, Hench LL. Effect of Crystallization on the Mechanical Properties of Li₂O-SiO₂ Glass-Ceramics. *J Am Ceram Soc* 1972;55:86-90.
9. Anusavice KJ, Zhang NZ, Moorhead JE. Influence of colorants on crystallization and mechanical properties of lithium-based glass-ceramics. *Dent Mater* 1994;10:141-6.
10. Lupu M, Giordano RA. Flexural strength of CAD/CAM ceramic framework materials. *J Dent Res* 2007;88:224.
11. Batson ER, Cooper LF, Duqum I, Mendonça G. Clinical outcomes of three different crown systems with CAD/CAM technology. *J Prosthet Dent* 2014;112:770-7.
12. Coldea A, Swain MV, Thiel N. Hertzian contact response and damage tolerance of dental ceramics. *J Mech Behav Biomed Mater* 2014;34:124-33.
13. Denry I, Holloway JA. Ceramics for dental applications: a review. *Materials* 2010;3:351-68.
14. Filser F, Kocher P, Gauckler LJ. Net-shaping of ceramic components by direct ceramic machining. *Assembly Autom* 2003; 23:382-90.
15. Hamza TA, Ezzat HA, El-Hossary MM, Katamish HA, Shokry TE, Rosenstiel SF. Accuracy of ceramic restorations made with two CAD/CAM systems. *J Prosthet Dent* 2013; 109:83-7.
16. Patzelt SB, Emmanouilidi A, Stampf S, Strub JR, Att W. Accuracy of full-arch scans using intraoral scanners. *Clin Oral Investig* 2014;18:1687-94.
17. International Organization for Standardization. ISO-5725-1. Accuracy (Trueness and Precision) of Measurement Methods and Results ? Part 1: General Principles and Definitions. Geneva: ISO; 1994. Available at: <https://www.iso.org/iso/store.html>
18. International Organization for Standardization. ISO-12836. Digitizing devices for CAD/CAM systems for indirect dental restorations - Test methods for assessing accuracy. Geneva: ISO; 2012. Available at: <https://www.iso.org/iso/store.html>
19. Bosch G, Ender A, Mehl A. A 3-dimensional accuracy analysis of chairside CAD/CAM milling processes. *J Prosthet Dent* 2014;112:1425-31.
20. Wiedhahn K, Schenk O, Fritzsche G. Cerec Omnicam - Intraoralscan 2.0. *Int J Comput Dent* 2012;15:199-205.
21. Poticny DJ, Klim J. CAD/CAM in-office technology: innovations after 25 years for predictable, esthetic outcomes. *J Am Dent Assoc* 2010;141:5S-9S.
22. Schaefer O, Watts DC, Sigusch BW, Kuepper H, Guentsch A. Marginal and internal fit of pressed lithium disilicate partial crowns *in vitro*: a three-dimensional analysis of accuracy and reproducibility. *Dent Mater* 2012;28:320-6.
23. Addison O, Cao X, Sunnar P, Fleming GJ. Machining variability impacts on the strength of a 'chair-side' CAD-CAM ceramic. *Dent Mater* 2012;28:880-7.