

Original Article



OPEN ACCESS

Received: Apr 9, 2017

Revised: May 6, 2017

Accepted: May 8, 2017

Correspondence to

Il Ju Choi

Center for Gastric Cancer, National Cancer Center, 323 Ilsan-ro, Ilsandong-gu, Goyang 10408, Korea.

Tel: +82-31-920-2282

Fax: +82-31-920-2799

E-mail: cij1224@ncc.re.kr

Copyright © 2017. Korean Gastric Cancer Association

This is an Open Access article distributed under the terms of the Creative Commons Attribution Non-Commercial License (<https://creativecommons.org/licenses/by-nc/4.0>) which permits unrestricted noncommercial use, distribution, and reproduction in any medium, provided the original work is properly cited.

ORCID iDs

Young-Il Kim

<https://orcid.org/0000-0002-2614-3419>

Mi-Jung Kim

<https://orcid.org/0000-0002-0721-7590>

Sook Ryun Park

<https://orcid.org/0000-0003-4724-5016>

Jong Yeul Lee

<https://orcid.org/0000-0001-8709-5097>

Chan Gyoo Kim

<https://orcid.org/0000-0002-1651-2559>

Gwang Ha Kim

<https://orcid.org/0000-0001-9721-5734>

Moo In Park

<https://orcid.org/0000-0003-2071-6957>

Il Ju Choi

<https://orcid.org/0000-0002-8339-9824>

<https://jgc-online.org>

Effect of a Proton Pump Inhibitor on Tumor Bleeding Prevention in Unresectable Gastric Cancer Patients: a Double-Blind, Randomized, Placebo-Controlled Trial

Young-Il Kim ¹, Mi-Jung Kim ¹, Sook Ryun Park ^{1,2}, Hark Kyun Kim¹, Soo-Jeong Cho¹, Jong Yeul Lee ¹, Chan Gyoo Kim ¹, Gwang Ha Kim ³, Moo In Park ⁴, Byung-Ho Nam⁵, Young Iee Park¹, Il Ju Choi ¹

¹Center for Gastric Cancer, National Cancer Center, Goyang, Korea

²Department of Oncology, Asan Medical Center, University of Ulsan College of Medicine, Seoul, Korea

³Department of Internal Medicine, Pusan National University School of Medicine and Biomedical Research Institute, Pusan National University Hospital, Busan, Korea

⁴Department of Internal Medicine, Kosin University College of Medicine, Busan, Korea

⁵Biometric Research Branch, Research Institute for National Cancer Control & Evaluation, National Cancer Center, Goyang, Korea

ABSTRACT

Purpose: Tumor bleeding is a major complication in inoperable gastric cancer. The study aim was to investigate the effects of proton pump inhibitor (PPI) treatment for the prevention of gastric tumor bleeding.

Materials and Methods: This study was a prospective double-blind, randomized, placebo-controlled trial. Patients with inoperable gastric cancer were randomly assigned to receive oral lansoprazole (30 mg) or placebo daily. The primary endpoint was the occurrence of tumor bleeding, and the secondary endpoints were transfusion requirement and overall survival (OS).

Results: This study initially planned to enroll 394 patients, but prematurely ended due to low recruitment rate. Overall, 127 patients were included in the analyses: 64 in the lansoprazole group and 63 in the placebo group. During the median follow-up of 6.4 months, tumor bleeding rates were 7.8% and 9.5%, in the lansoprazole and placebo groups, respectively, with the cumulative bleeding incidence not statistically different between the groups ($P=0.515$, Gray's test). However, during the initial 4 months, 4 placebo-treated patients developed tumor bleeding, whereas there were no bleeding events in the lansoprazole-treated patients ($P=0.041$, Gray's test). There was no difference in the proportion of patients who required transfusion between the groups. The OS between the lansoprazole (11.7 months) and the placebo (11.0 months) groups was not statistically different ($P=0.610$). Study drug-related serious adverse event or bleeding-related death did not occur.

Conclusions: Treating patients with inoperable gastric cancer with lansoprazole did not significantly reduce the incidence of tumor bleeding. However, further studies are needed to evaluate whether lansoprazole can prevent tumor bleeding during earlier phases of chemotherapy (ClinicalTrials.gov, identifier No. NCT02150447).

Keywords: Proton pump inhibitors; Stomach neoplasms; Hemorrhage; Primary prevention; Drug therapy

Funding

This work was supported by a grant from the National Cancer Center (Grant No. 1210520).

Conflict of Interest

No potential conflict of interest relevant to this article was reported.

INTRODUCTION

Among patients with upper gastrointestinal (UGI) malignancies, about 5% suffer from acute UGI bleeding (UGIB) [1,2]. Primary gastric cancer is the most common UGI malignancy causing UGIB [1,2]. Recurrent tumor bleeding after initially successful hemostasis using endoscopic therapy occurs in 41%–80% of patients with inoperable gastric cancer [2-4]. Tumor bleeding is a distressing complication because it may delay a predetermined chemotherapy schedule, increase the need for transfusion, and be associated with poor survival [4,5].

Proton pump inhibitors (PPIs) reduce gastric acid secretion by inhibiting H⁺ and K⁺-ATPase in the parietal cells of gastric mucosa, which stabilize blood clots [6]. Pre-endoscopic, intravenous use of a high-dose of the PPI omeprazole reduces the proportion of actively bleeding peptic ulcers and the need for endoscopic therapy [7]. The risk of re-bleeding after endoscopic therapy for peptic ulcer bleeding is also reduced by intravenous omeprazole [8]. Moreover, PPIs reduce recurrent bleeding and adverse ulcer effects in high-risk patients when used concomitantly with a cyclooxygenase-2 (COX-2) inhibitor [9] or regular use of low-dose aspirin [10]. Therefore, current guidelines recommend PPI therapy for management of non-variceal UGIB in patients, both before and after endoscopic therapy, and for the prevention of recurrent bleeding in high-risk patients [11,12].

Although tumor bleeding frequently occurs in patients with inoperable gastric cancer, which may negatively affect their quality of life, effective methods for bleeding prevention have not been established. Therefore, we investigated the efficacy of oral lansoprazole treatment in preventing the occurrence of tumor bleeding in patients with inoperable gastric cancer.

MATERIALS AND METHODS**Study design and patients**

This prospective, double-blind, randomized (1:1 allocation), placebo-controlled trial was conducted at 3 tertiary hospitals (National Cancer Center, Pusan National University Hospital, and Kosin University College of Medicine, Korea) from October 2009 until April 2014. The study protocol was approved by the Institutional Review Board (IRB) at the National Cancer Center (IRB No. NCCCTS09420), and by the IRBs of each participating institution. All patients provided written informed consent. This study was registered at ClinicalTrial.gov (identifier No. NCT02150447).

Eligible patients were ≥18 years of age with pathologically proven primary gastric adenocarcinoma. These patients had a treatment plan including first- or second-line palliative chemotherapy for inoperable, metastatic or locally advanced, unresectable gastric cancers. Patients were required to have an Eastern Cooperative Oncology Group (ECOG) performance status of 0 to 2 and adequate organ function. Patients with any of the following conditions were excluded: significant or uncontrolled gastrointestinal (GI) bleeding within 2 weeks before enrollment; any previous gastrectomy surgery; an inability to take oral medication; a history of allergy to PPIs; a serious concurrent infection or non-malignant disease; inadequate cardiovascular function, ischemic heart disease (unstable angina or myocardial infarction) within the past 6 months; a requirement for therapeutic anticoagulation, including aspirin or non-steroidal anti-inflammatory drugs; a requirement

for therapeutic corticosteroids; and a need for PPI maintenance for uncontrolled reflux esophagitis or an active peptic ulcer. Data were collected, recorded, and managed using the clinical research coordination platform (eVelos system; Velos Inc., Fremont, CA, USA) and electronic case report forms.

Random assignment and intervention procedures

Eligible patients were randomly assigned in a 1:1 ratio to receive oral lansoprazole or placebo once per day. Random allocation numbers were generated interactively using the eVelos system at the National Cancer Center of Korea using permuted block randomization with block sizes of 2, 4, and 6. Stratification was based on the hemoglobin levels of the patients at the time of study enrollment (≥ 10 g/dL vs. < 10 g/dL). Both patients and investigators were blinded to the intervention of the patient, and the randomization sequence was strictly concealed.

After assignment to intervention groups, patients started taking lansoprazole (30 mg) or placebo daily until a bleeding event occurred as defined in the next section. New study drugs were prescribed every 8 weeks (56 pills) after checking the numbers of pills taken by counting the returned pills. The use of study medication was stopped in patients that had a tumor bleeding event, were in poor general health, were transferred for supportive care, or were lost to follow-up.

Study assessment

Patients underwent a baseline history and physical examination, including blood analysis for complete blood cell counts, as well as liver and renal function testing. During the intervention period, the complete blood cell counts of patients were monitored to determine bleeding events every 3 weeks. A patient was determined to have a bleeding event if they presented with melena or hematemesis confirmed by attending medical personnel, if their hemoglobin level decreased more than 2.0 g/dL in 1 week with endoscopic evidence of tumor bleeding, or if their hemoglobin level decreased more than 3.0 g/dL in 3 weeks with endoscopic evidence of tumor bleeding. Endoscopic bleeding evidence upon endoscopic examination included Forrest Ia (spurting hemorrhage), Ib (oozing hemorrhage), IIa (non-bleeding exposed vessel), and IIb (adherent clots), which were defined according to the Forrest classification [13]. Endoscopic examinations were performed if patients had a defined bleeding event or suspected tumor bleeding.

Outcomes

In this study, the primary endpoint was a tumor bleeding event in the intention-to-treat population. Secondary endpoints included a transfusion requirement of packed red blood cells, and overall survival (OS). Patient survival status was obtained from the medical records of patients who had regular follow-up visits or from the claim database of the Korean National Health Insurance Corporation for those who were lost to follow-up.

Statistical analysis

The study sample size was determined on the assumption that the risk of tumor bleeding in inoperable gastric cancer patients who received palliative chemotherapy was 30%, which was based on internal data from the National Cancer Center of Korea. Considering a dropout rate of 15%, an enrollment of 394 patients was calculated to give the study a power of 90% to reduce the tumor bleeding rate to 15% (50% reduction) in the lansoprazole group with a 2-sided alpha level of 0.05. The enrolled patients were followed-up for 2 years, if the patient had no specific causes for discontinuation of the study.

A χ^2 test or Fisher's exact test was used for categorical variables, and a Mann-Whitney U test for continuous variables. Gray's test was used to compare time-to-tumor bleeding events between the lansoprazole and placebo groups after randomization in the intention-to-treat population among patients who took at least one dose of the study medication. The medication had competing risks of death without tumor bleeding events [14]. The Kaplan-Meier method with the log-rank test was used to compare OS curves between both groups. In addition, the Fine-Gray regression model was used to calculate the effect of lansoprazole on tumor bleeding event as compared with that of placebo [15]. All statistical analyses were performed with STATA software (version 13.1; StataCorp., College Station, TX, USA) or SAS software (version 9.3; SAS Institute Inc., Cary, NC, USA). A P-value of <0.05 was considered statistically significant.

RESULTS

Patient baseline characteristics

Patient recruitment started in October 2009; however, this study stopped recruitment prematurely in April 2014 due to a low recruitment rate. During that period, 397 patients were assessed for eligibility. Of those, 130 patients were enrolled; 66 were allocated to the lansoprazole group, and 64, to the placebo group. The enrolled patients were followed up until April 2015. Of those, 3 patients did not receive the allocated treatment; thus, 127 patients were included in the final analyses: 64 in the lansoprazole group and 63 in the placebo group. The detailed study flowchart is illustrated in **Fig. 1**.

The baseline characteristics were not significantly different between the lansoprazole and placebo groups (**Table 1**). Of the total enrolled patients, the median age was 56 years, 78.7% were male, and 20.5% had a baseline hemoglobin level <10.0 g/dL. On the endoscopic examination, proportion of tumors with ulcer findings (ulcerofungating and ulceroinfiltrative mass) was 81.9%. Most of the enrolled patients (98.4%) had metastatic disease. The proportion of patients who had received a concurrent 1st line chemotherapy was not different between the lansoprazole group and the placebo group (84.4% vs. 69.8%; $P=0.059$). The mean duration of medication administration was longer in the lansoprazole group than in the placebo group (204 vs. 158 days; $P=0.252$); however, there were no serious adverse events related to the study medication.

Primary outcome evaluation: tumor bleeding event

During the median follow-up time of 6.4 months (interquartile range, 3.1–12.8 months), the primary outcome (tumor bleeding event) occurred in 5 patients (7.8%) in the lansoprazole group and in 6 patients (9.5%) in the placebo group (**Table 2**). The hazard ratio [HR] in the lansoprazole group was 0.67 and 95% confidence interval [CI] was 0.21 to 2.11 (**Table 3**). There was no significant difference in the tumor bleeding events between the lansoprazole and placebo groups ($P=0.515$ by Gray's test; **Fig. 2**). However, when the follow-up period was censored at 4 months, the cumulative incidence rate of tumor bleeding in the lansoprazole group (0%) was lower than that in the placebo group (8.0%) ($P=0.041$ by Gray's test). Of the 4 patients in the placebo group who had tumor bleeding during initial 4 months follow-up periods, 2 patients received a 1st line chemotherapy and the remaining 2 patients had 2nd line chemotherapy. There were no deaths related to tumor bleeding among the patients who had a bleeding event.

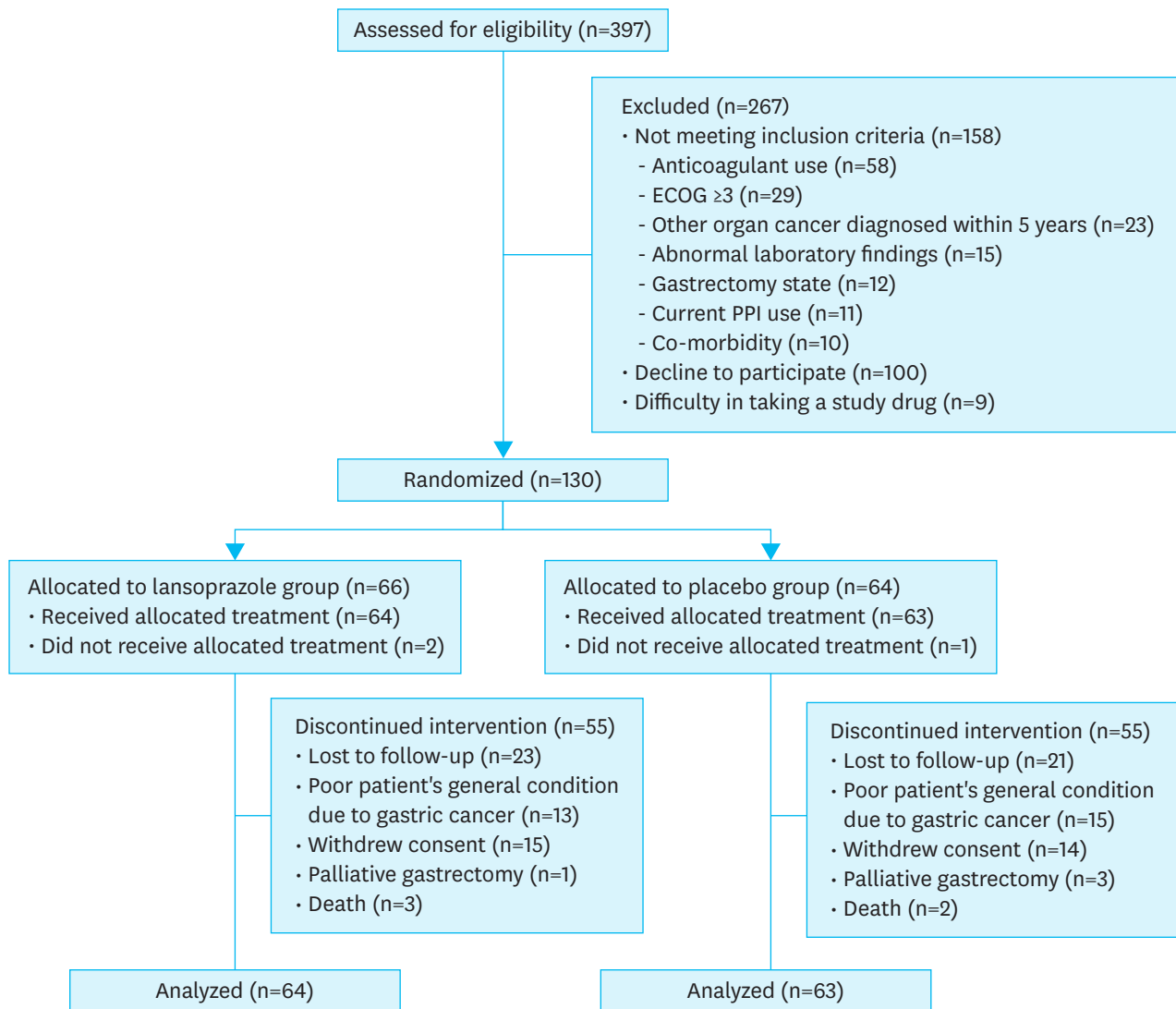


Fig. 1. CONSORT diagram of this study. CONSORT = Consolidated Standards of Reporting Trials; ECOG = Eastern Cooperative Oncology Group; PPI = proton pump inhibitor.

Secondary outcome evaluation: transfusion requirement and OS

During the follow-up period, the proportions of patients who received a transfusion, as well as those who received a transfusion of more than 5 units, were not significantly different between the 2 groups. Seven patients (10.9%) in the lansoprazole group and 9 (14.3%) in the placebo group underwent urgent endoscopy for suspicion of tumor bleeding due to an abrupt decrease in hemoglobin levels ($P=0.570$; **Table 2**). However, the events in these patients did not meet the definition of a tumor bleeding event because endoscopic findings did not show evidence of bleeding. During the follow-up period, there were no patients who underwent palliative surgery due to tumor bleeding.

The median OS after randomization was 11.7 months in the lansoprazole group and 11.2 months in the placebo group, with the OS times not being statistically different between the groups ($P=0.610$ by log-rank test; **Fig. 3**).

Effect of PPI on Tumor Bleeding Prevention

Table 1. Baseline clinical characteristics of the 127 enrolled patients

Characteristics	Lansoprazole (n=64)	Placebo (n=63)	P
Median age (yr)	57 (49–64)	55 (45–62)	0.223
Sex			0.793
Female	13 (20.3)	14 (22.2)	
Male	51 (79.7)	49 (77.8)	
Current smoking	27 (42.2)	31 (49.2)	0.665
Current alcohol drinking	33 (51.6)	35 (55.6)	0.893
Systolic BP (mmHg)	123.2±17.4	120.3±13.6	0.146
Diastolic BP (mmHg)	74.8±10.8	73.9±11.2	0.324
Pulse rate (beats/min)	80.5±13.5	80.7±13.8	0.478
ECOG performance status			1.000
0	2 (3.1)	2 (3.2)	
1	61 (95.3)	61 (96.8)	
2	1 (1.6)	0 (0)	
Concurrent chemotherapy			0.059
1st line	54 (84.4)	44 (69.8)	
2nd line	10 (15.6)	19 (30.2)	
Hemoglobin (g/dL)			0.964
<10.0	13 (20.3)	13 (20.6)	
≥10.0	51 (79.7)	50 (79.4)	
Hematocrit (%)	35.7±4.8	34.8±4.2	0.127
Platelet count (×1,000/mm ³)	272.0±104.9	248.7±96.6	0.099
Tumor size (cm)			0.647
≤5	22 (30.0)	22 (33.9)	
>5	42 (70.0)	41 (66.1)	
Tumor location			0.588
Lower 1/3	29 (45.3)	27 (42.9)	
Middle 1/3	16 (25.0)	14 (22.2)	
Upper 1/3	5 (7.8)	10 (15.9)	
More than half of the stomach	14 (21.9)	12 (19.1)	
Endoscopic findings of tumor type			0.237
Bormann type II (ulcerofungating mass)	8 (12.5)	9 (14.3)	
Bormann type III (ulceroinfiltrative mass)	40 (62.5)	46 (73.0)	
Bormann type IV (linitis plastica)	16 (25.0)	8 (12.7)	
Tumor histology*			0.660
Differentiated type	20 (31.3)	22 (34.9)	
Undifferentiated type	44 (68.8)	41 (65.1)	
Stage			0.151
Locally advanced	0 (0)	2 (3.2)	
Metastatic	64 (100.0)	61 (96.8)	
Duration of allocated medication (day)	204 (60–381)	158 (75–280)	0.252

Values are presented as median (IQR), number (%), or mean±SD.

BP = blood pressure; ECOG = Eastern Cooperative Oncology Group; IQR = interquartile range; SD = standard deviation.

*Differentiated type denotes papillary-, well-, or moderately-differentiated adenocarcinoma, and undifferentiated type denotes poorly differentiated adenocarcinoma or signet ring cell carcinoma.

Table 2. Outcomes of the 127 enrolled patients

Outcomes	Lansoprazole (n=64)	Placebo (n=63)	P
Tumor bleeding event	5 (7.8)	6 (9.5)	0.732
Melena	3	5	
Hematemesis	2	1	
Patients received transfusion	31 (48.4)	28 (44.4)	0.652
Transfusion requirement ≥5 units	17 (26.6)	10 (15.9)	0.141
Urgent endoscopy for suspicion of tumor bleeding	7 (10.9)	9 (14.3)	0.570

Values are presented as number of patients (%).

Table 3. Risk factors associated with tumor bleeding

Characteristics	Univariate analysis		
	cHR	95% CI	P*
Allocated treatment			
Placebo	1.00	-	-
Lansoprazole	0.67	0.21–2.11	0.496
Age (yr)			
<65	1.00	-	-
≥65	0.47	0.06–3.72	0.473
Sex			
Female	1.00	-	-
Male	1.50	0.33–6.74	0.599
Current smoker	1.15	0.32–4.20	0.829
Current alcohol drinking	0.79	0.25–2.55	0.697
Baseline hemoglobin level (g/dL)			
<10.0	1.00	-	-
≥10.0	0.79	0.21–2.95	0.726
ECOG performance status			
0	1.00	-	-
1–2	0.24	0.04–1.44	0.120
Palliative chemotherapy			
1st line	1.00	-	-
2nd line	0.96	0.20–4.65	0.964
Tumor size (cm)			
<5	1.00	-	-
≥5†	NA	NA	NA
Tumor location			
Lower 1/3	1.00	-	-
Middle 1/3	0.70	0.14–3.53	0.664
Upper 1/3	1.51	0.28–8.30	0.632
Endoscopic findings of tumor type			
Borrmann type IV (linitis plastica)	1.00	-	-
Borrmann type II/III (ulcerofungating/ulceroinfiltrative mass)	0.80	0.17–3.72	0.774
Tumor histology‡			
Differentiated type	1.00	-	-
Undifferentiated type	2.66	0.54–12.95	0.227

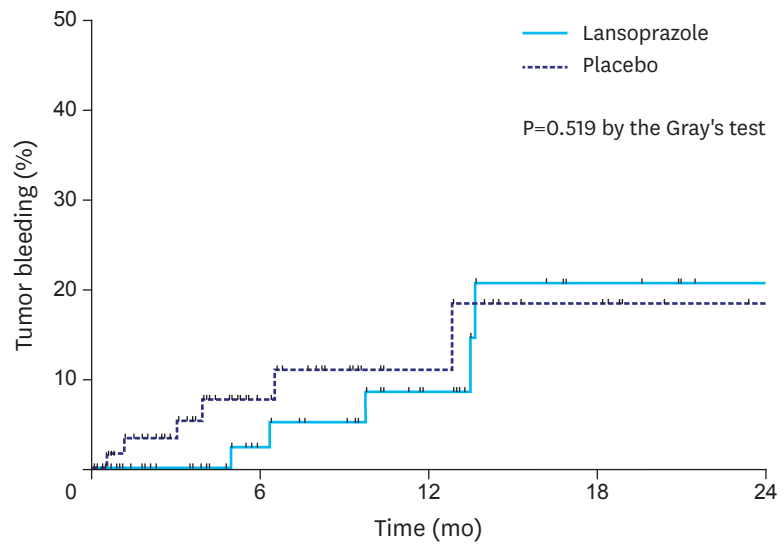
cHR = crude hazard ratio; CI = confidence interval; ECOG = Eastern Cooperative Oncology Group; NA = not applicable.

*Fine-Gray regression model; †cHR could not be estimated because no bleeding events occurred in patients with tumor sizes of less than 5 cm; ‡Differentiated type denotes papillary-, well-, or moderately-differentiated adenocarcinoma, and undifferentiated type denotes poorly differentiated adenocarcinoma or signet ring cell carcinoma.

DISCUSSION

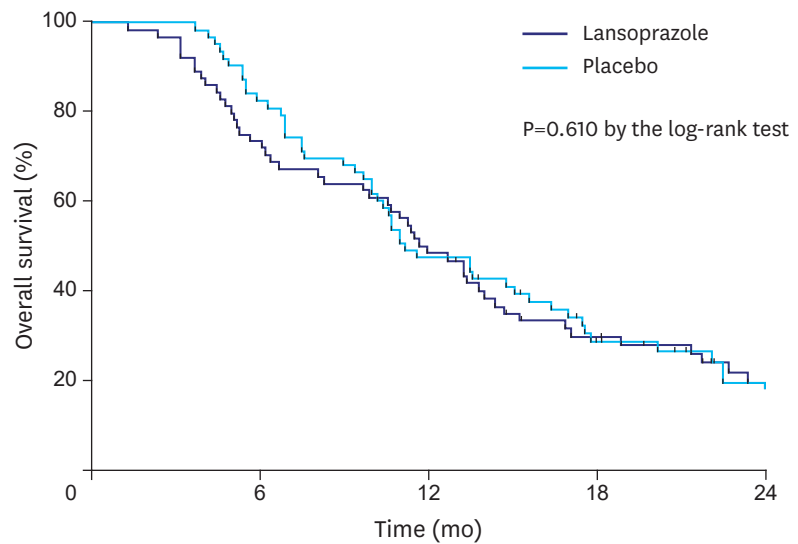
In this trial, the use of lansoprazole, as compared with placebo, did not reduce tumor bleeding in patients with inoperable advanced gastric cancer. Furthermore, transfusion requirements and OS times were not different between the lansoprazole- and placebo-treated patients. However, lansoprazole-treated patients did not have any tumor bleeding events during the first 4 months after randomization, whereas 4 placebo-treated patients had bleeding events during the same period.

The effects of PPI therapy for bleeding have been largely investigated in patients with peptic ulcers. A meta-analysis of 21 randomized controlled trials showed that PPI treatment significantly reduces the risk of re-bleeding and the need for surgery in patients with peptic ulcer bleeding [16]. Furthermore, PPIs reduce ulcer bleeding and associated adverse effects in high-risk patients who use low-dose aspirin, nonsteroidal anti-inflammatory drugs, or COX-2 inhibitors [9,10,17]. Although inoperable advanced gastric cancer patients have a high risk of tumor bleeding [18], there have been no well-designed studies to investigate whether PPI



	No. at risk				
Lansoprazole	64	35	19	10	6
Placebo	63	29	13	7	1

Fig. 2. Cumulative incidence rates of tumor bleeding in lansoprazole and placebo groups.



	No. at risk				
Lansoprazole	64	47	31	17	9
Placebo	63	52	30	16	8

Fig. 3. OS in the lansoprazole and placebo groups. OS = overall survival.

therapy can reduce tumor bleeding. This is the first clinical study to evaluate the effect of PPI treatment on the prevention of gastric cancer bleeding, no definite beneficial effects discovered.

PPI therapy maintains intra-gastric pH ≥ 6.0 [19], which is an adequate pH level for clot formation and stabilization [20]. In addition, PPI therapy can heal the ulcer itself, and as a

consequence, it may be associated with the reduction of bleeding-associated adverse effects in patients with peptic ulcers. These ulcer healing effects were also reported in malignant gastric ulcer patients [21,22]. In this trial, inoperable gastric cancer patients who received lansoprazole had significantly reduced tumor bleeding events compared with those who received placebo until 4 months after the initiation of drug administration; however, the differences between the 2 groups became insignificant after the first 4 months of treatment. One possible explanation might be the increased tumor burden due to cancer progression that occurred during palliative chemotherapy.

In the present trial, lansoprazole therapy did not reduce the requirement for transfusion in inoperable gastric cancer patients. In patients with GI-tract cancers, tumor bleeding occurs with chronic symptoms presenting as dark stool or positive occult blood in stool, rather than presenting with massive UGIB [23]. Moreover, chronic blood loss from the tumor, even without sudden bleeding episodes, can cause chronic anemia, including iron deficiency anemia, in patients with GI-tract cancers [24]. The mucosa of gastric cancer is vulnerable to spontaneous bleeding, and oozing hemorrhage is the most common type of endoscopic bleeding stigmata [18]. Thus, tumor bleeding is not a rare complication in patients with inoperable gastric cancer, and transfusion and diagnostic evaluation is frequently required. In this trial, more than 60% of the enrolled patients had large tumors (>5 cm), and as a result, there was a greater extent of mucosa prone to bleeding. We speculate that oral lansoprazole therapy is not as effective in reducing chronic, low-level blood loss from friable tumor mucosa.

Once a tumor bleeding event occurs, treatment becomes more complicated. Moreover, the re-bleeding rate after successful endoscopic hemostasis has been reported to be as high as 41% [4]. Tumor bleeding may cause a delay in the predetermined chemotherapy schedule or increase the risk of bleeding-related death. In addition, patients whose endoscopic hemostasis fails show shorter than expected OS [4,5]. Therefore, in our study, we evaluated the effect of daily oral PPI treatment on overall mortality of inoperable gastric cancer patients as a secondary outcome. However, daily lansoprazole therapy, as compared with placebo treatment, did not affect OS in our trial. This result may be due to the low bleeding rate and the lack of bleeding-related mortality occurrences in our study.

In the present trial, the placebo group had less tumor bleeding events than would be expected based on the sample size. There are several possible reasons for this discrepancy. First, the palliative chemotherapy may have improved the tumor status of the enrolled patients. Since the 1990s, clinical trials have shown that palliative chemotherapy with various regimens significantly increases tumor response and improves OS [25]. For instance, a recent phase III clinical trial using specific molecular targeting agents reported tumor response rates between 35% and 47% [26,27]. Second, gastric cancer is increasingly diagnosed at earlier stages owing to the national cancer screening program that provides biennial endoscopic screening in Korea. Following initiation of this program, screening rates for gastric cancer have increased annually from 52% in 2004 to 80% in 2013 [28], and the proportion of early-stage gastric cancer has increased in patients who underwent a screening endoscopy between 2006 and 2011 [29]. We speculate that even the patients with stage IV cancer are being diagnosed at smaller sizes or with less prominent ulcers, both of which would lead to fewer bleeding events.

This trial is the first well-designed, randomized controlled trial assessing the effect of PPI therapy on a population of gastric cancer patients, but there are several important

limitations. First, we could not complete the study of the initial 394 recruited patients, as the study was prematurely stopped. This is a consequence of the national cancer screening program, as the proportion of stage IV gastric cancers have been decreasing in Korea, resulting in insufficient study enrollment [30]. Therefore, the study power for the primary outcome is not enough to conclude that daily oral lansoprazole does not reduce the tumor bleeding incidence in patients with inoperable gastric cancer. Second, we only investigated the effect of a once-a-day dose of oral lansoprazole. For patients with inoperable gastric cancer, a higher dosing schedule may be more effective; thus, further studies will be needed to assess the effect of lansoprazole at varying doses. Third, the median follow-up duration was short, and the number of patients who were lost to follow-up was large. Despite the survival benefits associated with first- and second-line chemotherapy, a standard third-line regimen has not yet been investigated for progressed gastric cancer [31]. This may be the cause of the shorter follow-up duration and the increasing number of patients lost to follow-up in the current study. Finally, the placebo group included more patients who received 2nd line chemotherapy than the lansoprazole group, despite no statistical significance. Thus, this may affect tumor bleeding events during early periods in the placebo group, partly because of poor tumor control by the 2nd line chemotherapy.

In conclusion, this study found that maintaining daily oral lansoprazole in inoperable advanced gastric cancer patients did not significantly reduce the incidence of tumor bleeding. However, during the initial 4-month period of lansoprazole therapy, tumor bleeding events were significantly reduced compared with those in placebo-treated patients. Therefore, further studies are needed to evaluate whether PPIs can prevent tumor bleeding during the early phase of chemotherapy for inoperable gastric cancer.

REFERENCES

1. Savides TJ, Jensen DM, Cohen J, Randall GM, Kovacs TO, Pelayo E, et al. Severe upper gastrointestinal tumor bleeding: endoscopic findings, treatment, and outcome. *Endoscopy* 1996;28:244-248.
[PUBMED](#) | [CROSSREF](#)
2. Sheibani S, Kim JJ, Chen B, Park S, Saberi B, Keyashian K, et al. Natural history of acute upper GI bleeding due to tumours: short-term success and long-term recurrence with or without endoscopic therapy. *Aliment Pharmacol Ther* 2013;38:144-150.
[PUBMED](#) | [CROSSREF](#)
3. Loftus EV Jr, Alexander GL, Ahlquist DA, Balm RK. Endoscopic treatment of major bleeding from advanced gastroduodenal malignant lesions. *Mayo Clin Proc* 1994;69:736-740.
[PUBMED](#) | [CROSSREF](#)
4. Kim YI, Choi JJ, Cho SJ, Lee JY, Kim CG, Kim MJ, et al. Outcome of endoscopic therapy for cancer bleeding in patients with unresectable gastric cancer. *J Gastroenterol Hepatol* 2013;28:1489-1495.
[PUBMED](#) | [CROSSREF](#)
5. Koh KH, Kim K, Kwon DH, Chung BS, Sohn JY, Ahn DS, et al. The successful endoscopic hemostasis factors in bleeding from advanced gastric cancer. *Gastric Cancer* 2013;16:397-403.
[PUBMED](#) | [CROSSREF](#)
6. Neumann I, Letelier LM, Rada G, Claro JC, Martin J, Howden CW, et al. Comparison of different regimens of proton pump inhibitors for acute peptic ulcer bleeding. *Cochrane Database Syst Rev* 2013:CD007999.
[PUBMED](#) | [CROSSREF](#)
7. Lau JY, Leung WK, Wu JC, Chan FK, Wong VW, Chiu PW, et al. Omeprazole before endoscopy in patients with gastrointestinal bleeding. *N Engl J Med* 2007;356:1631-1640.
[PUBMED](#) | [CROSSREF](#)
8. Lau JY, Sung JJ, Lee KK, Yung MY, Wong SK, Wu JC, et al. Effect of intravenous omeprazole on recurrent bleeding after endoscopic treatment of bleeding peptic ulcers. *N Engl J Med* 2000;343:310-316.
[PUBMED](#) | [CROSSREF](#)

9. Chan FK, Wong VW, Suen BY, Wu JC, Ching JY, Hung LC, et al. Combination of a cyclo-oxygenase-2 inhibitor and a proton-pump inhibitor for prevention of recurrent ulcer bleeding in patients at very high risk: a double-blind, randomised trial. *Lancet* 2007;369:1621-1626.
[PUBMED](#) | [CROSSREF](#)
10. Lai KC, Lam SK, Chu KM, Wong BC, Hui WM, Hu WH, et al. Lansoprazole for the prevention of recurrences of ulcer complications from long-term low-dose aspirin use. *N Engl J Med* 2002;346:2033-2038.
[PUBMED](#) | [CROSSREF](#)
11. Gralnek IM, Dumonceau JM, Kuipers EJ, Lanas A, Sanders DS, Kurien M, et al. Diagnosis and management of nonvariceal upper gastrointestinal hemorrhage: European Society of Gastrointestinal Endoscopy (ESGE) Guideline. *Endoscopy* 2015;47:a1-a46.
[PUBMED](#) | [CROSSREF](#)
12. Hwang JH, Fisher DA, Ben-Menachem T, Chandrasekhara V, Chathadi K, Decker GA, et al. The role of endoscopy in the management of acute non-variceal upper GI bleeding. *Gastrointest Endosc* 2012;75:1132-1138.
[PUBMED](#) | [CROSSREF](#)
13. Forrest JA, Finlayson ND, Shearman DJ. Endoscopy in gastrointestinal bleeding. *Lancet* 1974;2:394-397.
[PUBMED](#) | [CROSSREF](#)
14. Gray RJ. A class of K-sample tests for comparing the cumulative incidence of a competing risk. *Ann Stat* 1988;16:1141-1154.
[CROSSREF](#)
15. Fine JP, Gray RJ. A proportional hazards model for the subdistribution of a competing risk. *J Am Stat Assoc* 1999;94:496-509.
[CROSSREF](#)
16. Leontiadis GI, Sharma VK, Howden CW. Systematic review and meta-analysis of proton pump inhibitor therapy in peptic ulcer bleeding. *BMJ* 2005;330:568.
[PUBMED](#) | [CROSSREF](#)
17. Lanas A, Garcia-Rodríguez LA, Arroyo MT, Bujanda L, Gomollón F, Forné M, et al. Effect of antisecretory drugs and nitrates on the risk of ulcer bleeding associated with nonsteroidal anti-inflammatory drugs, antiplatelet agents, and anticoagulants. *Am J Gastroenterol* 2007;102:507-515.
[PUBMED](#) | [CROSSREF](#)
18. Kim YI, Choi JJ. Endoscopic management of tumor bleeding from inoperable gastric cancer. *Clin Endosc* 2015;48:121-127.
[PUBMED](#) | [CROSSREF](#)
19. Laine L, Shah A, Bemanian S. Intra-gastric pH with oral vs intravenous bolus plus infusion proton-pump inhibitor therapy in patients with bleeding ulcers. *Gastroenterology* 2008;134:1836-1841.
[PUBMED](#) | [CROSSREF](#)
20. Green FW Jr, Kaplan MM, Curtis LE, Levine PH. Effect of acid and pepsin on blood coagulation and platelet aggregation. A possible contributor prolonged gastroduodenal mucosal hemorrhage. *Gastroenterology* 1978;74:38-43.
[PUBMED](#)
21. Sakita T, Oguro Y, Takasu S, Fukutomi H, Miwa T. Observations on the healing of ulcerations in early gastric cancer. The life cycle of the malignant ulcer. *Gastroenterology* 1971;60:835-839.
[PUBMED](#)
22. Myung YS, Hong SJ, Han JP, Park KW, Ko BM, Lee MS. Effects of administration of a proton pump inhibitor before endoscopic submucosal dissection for differentiated early gastric cancer with ulcer. *Gastric Cancer* 2017;20:200-206.
[PUBMED](#) | [CROSSREF](#)
23. Imbesi JJ, Kurtz RC. A multidisciplinary approach to gastrointestinal bleeding in cancer patients. *J Support Oncol* 2005;3:101-110.
[PUBMED](#)
24. Camaschella C. Iron-deficiency anemia. *N Engl J Med* 2015;372:1832-1843.
[PUBMED](#) | [CROSSREF](#)
25. Wagner AD, Unverzagt S, Grothe W, Kleber G, Grothey A, Haerting J, et al. Chemotherapy for advanced gastric cancer. *Cochrane Database Syst Rev* 2010:CD004064.
[PUBMED](#) | [CROSSREF](#)
26. Bang YJ, Van Cutsem E, Feyereislova A, Chung HC, Shen L, Sawaki A, et al. Trastuzumab in combination with chemotherapy versus chemotherapy alone for treatment of HER2-positive advanced gastric or gastro-oesophageal junction cancer (ToGA): a phase 3, open-label, randomised controlled trial. *Lancet* 2010;376:687-697.
[PUBMED](#) | [CROSSREF](#)

27. Ohtsu A, Shah MA, Van Cutsem E, Rha SY, Sawaki A, Park SR, et al. Bevacizumab in combination with chemotherapy as first-line therapy in advanced gastric cancer: a randomized, double-blind, placebo-controlled phase III study. *J Clin Oncol* 2011;29:3968-3976.
[PUBMED](#) | [CROSSREF](#)
28. Suh M, Choi KS, Park B, Lee YY, Jun JK, Lee DH, et al. Trends in cancer screening rates among Korean men and women: results of the Korean National Cancer Screening Survey, 2004–2013. *Cancer Res Treat* 2016;48:1-10.
[PUBMED](#) | [CROSSREF](#)
29. Kim YG, Kong SH, Oh SY, Lee KG, Suh YS, Yang JY, et al. Effects of screening on gastric cancer management: comparative analysis of the results in 2006 and in 2011. *J Gastric Cancer* 2014;14:129-134.
[PUBMED](#) | [CROSSREF](#)
30. Kim HS, Lee H, Jeung HC, Noh SH, Chung HC, Roh JK, et al. Advanced detection of recent changing trends in gastric cancer survival: up-to-date comparison by period analysis. *Jpn J Clin Oncol* 2011;41:1344-1350.
[PUBMED](#) | [CROSSREF](#)
31. Kim SM, Park SH. Chemotherapy beyond second-line in advanced gastric cancer. *World J Gastroenterol* 2015;21:8811-8816.
[PUBMED](#) | [CROSSREF](#)