



Treatment of BG-1 Ovarian Cancer Cells Expressing Estrogen Receptors with Lambda-cyhalothrin and Cypermethrin Caused a Partial Estrogenicity Via an Estrogen Receptor-dependent Pathway

Cho-Won Kim, Ryeo-Eun Go and Kyung-Chul Choi

Laboratory of Biochemistry and Immunology, College of Veterinary Medicine, Chungbuk National University, Cheongju, Korea

(Received July 18, 2015; Revised September 11, 2015; Accepted December 14, 2015)

Synthetic pyrethroids (SPs) are the most common pesticides which are recently used for indoor pest control. The widespread use of SPs has resulted in the increased exposure to wild animals and humans. Recently, some SPs are suspected as endocrine disrupting chemicals (EDCs) and have been assessed for their potential estrogenicity by adopting various analyzing assays. In this study, we examined the estrogenic effects of lambda-cyhalothrin (LC) and cypermethrin (CP), the most commonly used pesticides in Korea, using BG-1 ovarian cancer cells expressing estrogen receptors (ERs). To evaluate the estrogenic activities of two SPs, LC and CP, we employed MTT assay and reverse-transcription polymerase chain reaction (RT-PCR) in LC or CP treated BG-1 ovarian cancer cells. In MTT assay, LC (10^{-6} M) and CP (10^{-5} M) significantly induced the growth of BG-1 cancer cells. LC or CP-induced cell growth was antagonized by addition of ICI 182,720 (10^{-8} M), an ER antagonist, suggesting that this effect appears to be mediated by an ER-dependent manner. Moreover, RT-PCR results showed that transcriptional level of cyclin D1, a cell cycle-regulating gene, was significantly up-regulated by LC and CP, while these effects were reversed by co-treatment of ICI 182,780. However, p21, a cyclin D-ckd-4 inhibitor gene, was not altered by LC or CP. Moreover, ER α expression was not significantly changed by LC and CP, while down-regulated by E2. Finally, in xenografted mouse model transplanted with human BG-1 ovarian cancer cells, E2 significantly increased the tumor volume compare to a negative control, but LC did not. Taken together, these results suggest that LC and CP may possess estrogenic potentials by stimulating the growth of BG-1 ovarian cancer cells via partially ER signaling pathway associated with cell cycle as did E2, but this estrogenic effect was not found in *in vivo* mouse model.

Key words: Endocrine disruption, Pyrethroids, Lambda-cyhalothrin, Cyperemethrin, Ovarian cancer, Xenograft models

INTRODUCTION

Endocrine disrupting chemicals (EDCs) are environmentally persistent chemicals that interfere with the physiological endocrine systems and abnormally regulated the activation by naturally circulating steroid hormones via those receptors (1-3). In general, EDCs have various chemical structures similar to that of 17β -estradiol (E2), an endogenous

estrogen and they mimic estrogenic or androgenic effects on steroid receptors such as estrogen receptor (ER) or androgen receptor (AR), interfere with the actions of endogenous steroid hormones (1,4,5). Therefore, increasing concern about the environmental effects of EDCs, diverse xenoestrogens has found in natural or artificial environments.

Synthetic pyrethroids (SPs) are the most common pesticides in recent use, which are used as indoor pest control (6,7), especially, lambda-cyhalothrin (LC) and cypermethrin (CP) are the most commonly used in Republic of Korea. The widespread use of SPs has resulted in an increased presence in the wild animals and extensive human exposure (6,8-11). SPs are known to exert their pesticidal actions by altering the sodium permeability of insect neural membranes by adjusting voltage-sensitive sodium channels (12). They were regarded as safe pesticides because of their

Correspondence to: Kyung-Chul Choi, Laboratory of Biochemistry and Immunology, College of Veterinary Medicine, Chungbuk National University, Cheongju, Chungbuk 361-763, Korea
E-mail: kchoi@cbu.ac.kr

This is an Open-Access article distributed under the terms of the Creative Commons Attribution Non-Commercial License (<http://creativecommons.org/licenses/by-nc/3.0>) which permits unrestricted non-commercial use, distribution, and reproduction in any medium, provided the original work is properly cited.

highly selectivity of favorable insect : mammalian toxicity ratio (13).

Although the use of SPs has been promoted by their low toxicities in mammals and birds (14), possible adverse effects on the endocrine system have been observed with several SPs (15). Moreover, some researchers have already included SPs in their lists of possible EDCs (16). Recently, many studies have estimated the estrogenic potential of SPs, LC or CP, by adopting several different analyzing assays such as cell proliferation assay or E-screen assay (11,15,17), reporter gene or binding assay (18,19), ER competitive-binding assay (17), animal reproductive system (20,21). However, yet there is no research on the relationship between the SPs and cell cycle-related genes or as regards in estrogen-responsive cells such as BG-1 human ovarian cancer cell line.

In this study, we examined the estrogenic effects of two pyrethroids, LC and CP, in the mechanism of cell cycle related via ER signaling pathway of BG-1 human ovarian cancer cells expressing ER in cellular levels and xenograft mouse model.

MATERIALS AND METHODS

Chemicals. 17 β -estradiol (E2), fluvestrant (ICI 182,780), lambda-cyhalothrin and cypermethrin were purchased from Sigma-Aldrich Inc. (St. Louis, MO, USA). Chemical structures of the pyrethroids tested in this study were shown in Fig. 1. A final concentration of DMSO that used for vehicle was 0.1% in the culture media.

Cell culture and media. BG-1 human ovarian cancer cells were obtained from Dr. K. S. Korach (National Institute of Environmental Health Sciences, NIH, Research Triangle Park, NC, USA). The cells were cultured in Dulbecco's

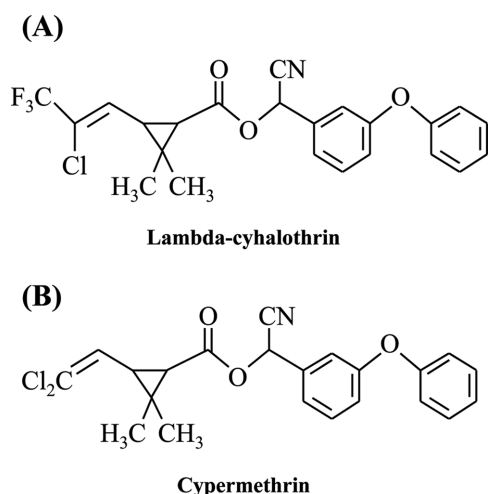


Fig. 1. Chemical structure of two synthetic pyrethroid insecticides.

modified Eagle's medium (DMEM; Hyclone Laboratories, Inc. Logan, UT, USA) supplemented with 10% heat inactivated fetal bovine serum (FBS; Hyclone Laboratories), 1% penicillin-streptomycin (A&E Scientific, Rue de Lekernay, Belgium) at 37°C in a humidified atmosphere of 5% CO₂ containing air. To prevent the estrogenic effects of some components in DMEM and FBS, phenol red-free DMEM (Sigma-Aldrich Inc.) supplemented with 5% charcoal-dextran treated FBS was used for detection of the estrogenicity of EDCs in BG-1 cells. The cells were detached with 0.05% Trypsin-EDTA (Life Technologies Inc., Grand Island, NY, USA).

Cell viability assays (MTT assay). BG-1 cells were seeded at a density of 3×10^3 cells per well of 96-well plates. After 2-day incubation, the culture medium was replaced with new medium containing E2 or two-pesticides and changed every three days, and the cells were incubated for further 9 days. Next, the culture medium was removed and then 3-(4,5-dimethylthiazol-2-yl)-2,5-diphenyltetrazolium bromide (MTT; Sigma-Aldrich Inc.) solution was added for 4 hr. After the culture medium was removed, 200 μ L of DMSO (Junsei Chemical Co., Ltd., Tokyo, Japan) was added per well. The absorbance was measured at 540 nm, using an ELISA reader (Epoch, BioTek Instruments, Inc., VT, USA).

Total RNA extraction and semi-quantitative reverse transcription (RT)-PCR. Total RNA was isolated from cells using TRIzol reagent (Invitrogen Life Technologies, Carlsbad, CA, USA) following the manufacturer's instructions. The total RNA concentration was measured with a microreader (BioTek Instruments) at 260/280 nm. One mg of total RNA was dissolved in 60 mL diethyl pyrocarbonate treated-deionized water (DEPC-DW) for cDNA synthesis. To synthesize cDNA from total RNA for RT-PCR, the PCR mixture consisted of 200 U murine leukemia virus reverse transcriptase (M-MLV RT), 200 pM nonamer random primers, 2.5 mM dNTPs, 0.4 μ L RNA inhibitor, and 5x RT buffer (all from iNtRON Biotechnology, Seongnam, Republic of Korea). cDNA synthesis was performed at 37°C for 1 hr and the enzyme was inactivated at 95°C for 5 min.

To measure the mRNA expression of p21, cyclin D1 and ER α , the genes were amplified using 10 pM of each forward and reverse primer (Bioneer Co., Daejeon, Republic of Korea), 2 units of Taq polymerase (iNtRON Biotechnology), MMLV-RT buffer (iNtRON Biotechnology), 5 pM dNTP mixture, and 1 μ L cDNA as the template. PCR was carried out for 30 cycles of 95°C for 30 s, 58°C for 30 s, and 72°C for 30 s. The following primers were used for this experiment: 5'-AGGCA CCGAG GCACT CAGAG-3' (forward) and 5'-TGACA GGTCC ACATG GTCTT CC-3' (reverse) for p21 (370 bp), 5'-TCTAA GATGA AGGAG ACCATC-3' (forward) and 5'-GCGGT AGTAG GACAG

GAAGT TGTT-3' (reverse) for cyclin D1 (354 bp), 5'-AGACA TGAGA GCTGC CAACC-3' (forward) and 5'-GCCAG GCACA TTCTA GAAGG-3' (reverse) for ER α , and 5'-ATGTT CGTCA TGGGT GTGAA CCA-3' and 5'-TGGCA GGTT TTTCT AGACG GCAG-3' for human GAPDH (351 bp). The housekeeping gene GAPDH was used as the control. The PCR products were separated in a 1.5% agarose gel and size of the bands were estimated relative to SiZerTM-100 bp DNA marker (iNtRON Biotechnology). The gels were scanned and optical density of the bands was quantified using Gel Doc 2000 (Bio-Rad, Laboratories, Inc., Berkeley, CA, USA). Each experiment was carried out in triplicate.

Animal experiments. BALB/c Nude female mice (4 weeks old) were purchased from DAEHAN BioLink (Eumseong, Korea) and the experiments were conducted according to the protocols approved by the Animal Care Committee of Chungbuk National University. The room was kept at 24°C under a 12-hr light-dark cycle. The mice were acclimatized for at least one week prior to the start of experiments. To manufacture animal models xenografted with BG-1 ovarian cancer cells, BG-1 cells (3×10^7) were mixed with Matrigel (BD Biosciences, Bedford, MA, USA) at 1 : 1 volume ratio of Matrigel to PBS in 100 μ L and injected subcutaneously into the back of the mice. Mice were monitored for tumor growth every 10 days and the tumor volumes were measured using a vernier calipers and calculated by length \times width \times height \times 0.5236 (mm^3). Once the tumor reached over 60 mm^3 , the mice were surgically ovariectomized under anesthesia using avertin (diluted in PBS). The mice were divided into three groups and each mouse was injected intraperitoneal every 3-4 days for a period of 80 days with one of the followings: 1% DMSO in PBS as a negative control (n = 3), E2 (n = 3; 20 $\mu\text{g}/\text{kg}$ body weight/day), and lambda-cyhalothrin (n = 3; 40 mg/kg body weight/day). Injection concentration of pesticide was two thousands of acceptable daily intake (ADI) as provided by the Joint FAO/WHO Meeting on Pesticides Residues (JMPR) in 2005 or 2003.

Data analysis. Data are expressed as the mean \pm standard error of the mean. Results were analyzed using a one-way analysis of variance (ANOVA) followed by *post hoc* Dunnett's. *P*-values < 0.05 were considered statistically significant.

RESULTS

Effects of pyrethroids on the cell viability of BG-1 cells. The estimate the effect of pyrethroids on BG-1 cell growth, an estrogen responsive cells, these cells were cultured with a vehicle (0.1% DMSO), E2 (10^{-9} M), CP (10^{-5} - 10^{-8} M), LC (10^{-5} - 10^{-8} M). Each treatment was cultured for

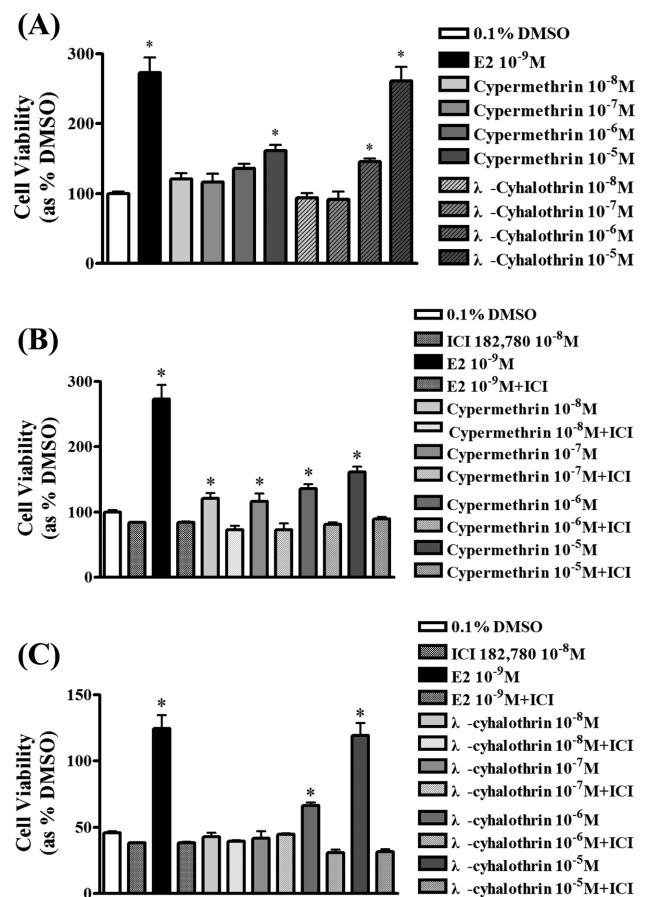


Fig. 2. Cell proliferation of BG-1 ovarian cancer cells following the treatment with E2 or two-pyrethroids. To evaluate the effect of E2 and two-pesticides on cell viability, BG-1 cells were seeded at 96-well plate with 3,000 cells per well in 200 μ L of phenol red-free DMEM with 5% CD-FBS medium. Cells were cultured in phenol red-free DMEM with 0.1% DMSO (control), E2 (10^{-9} M), cypermethrin (10^{-5} - 10^{-8} M) and lambda-cyhalothrin (10^{-5} - 10^{-8} M) in the present (B,C) or absence (A) of ICI 182,780 (10^{-8} M) for 9 days. The cell viability was measured using an MTT assay. Values are the means \pm SD. *: Mean values were significantly different from 0.1% DMSO (control), $p < 0.05$ (Dunnett's multiple comparison test).

9 days. E2 as a positive control markedly increased BG-1 cell proliferation about 2.5 times more compared to 0.1% DMSO (negative control) as shown in Fig. 2A. Two pyrethroids significantly increased BG-1 cell proliferation the most at 10^{-5} M in a dose-dependent manner but CP and LC did not induce BG-1 cell proliferation at 10^{-6} M and 10^{-7} M, respectively, indicating that two pyrethroids have an estrogenic potential even at a much higher concentration. Then, to identify the relevance of ER signaling pathway, ICI 182,780 was used by an ER-antagonist and treated with two pyrethroids. In the co-treatment of ICI 182,780, E2 or two pyrethroids-induced cell growth was reversed to a level of a negative control regardless of the concentration of pyre-

throids (Fig. 2B and C). These findings indicate that two pyrethroids may have estrogenic potential via an ER signaling pathway.

Cyclin D1 gene expression in BG-1 cells treated with pyrethroids. Since the cell growth of BG-1 cells was induced by two pyrethroids, we investigated their effects on the expression of genes associated with cyclin D1, a cell cycle-regulating gene, using by RT-PCR. We treated the

cells with E2, two pyrethroids (10^{-5} M) for 6 and 24 hr, based on results of the cell viability assay. RT-PCR results showed that the expression of cyclin D1 was significantly up-regulated by treatment with E2 and two pyrethroids at each time point, but it was decreased by LC at 24 hr when normalized as GAPDH (Fig. 3A). In parallel, the expression of E2 or pyrethroids induced-cyclin D1 gene was down-regulated by the co-treatment of ICI 182,780 at 6 hr or 24 hr compared to the negative control level (Fig. 3B).

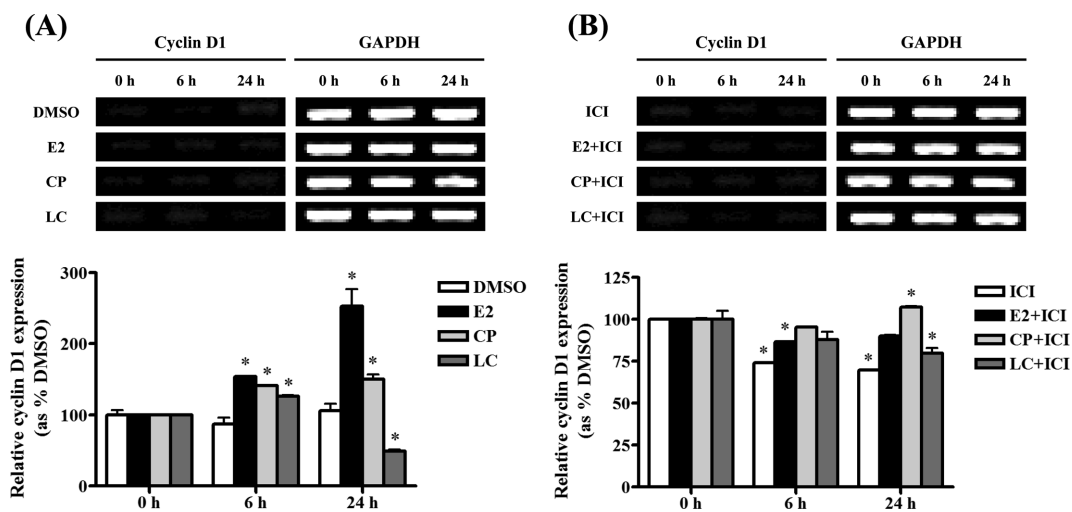


Fig. 3. Effects of pyrethroids on the expression of cyclinD1 mRNA in BG-1 ovarian cancer cells. BG-1 cells were seed in 6-well plate and treated with 0.1% DMSO, cypermethrin (10^{-5} M) and lambda-cyhalothrin (10^{-5} M) in the present (B) or absence (A) of ICI 182,780 in time-dependent manner. Cyclin D1 mRNA levels were determined by RT-PCR using GAPDH (a housekeeping gene) as an internal control. Quantification of gene of cyclin D1 was conducted by scanning the densities of bands on agarose gels using Gel Doc 2000. *: Mean values were significantly different from control (0.1% DMSO), $p < 0.05$ (Dunnett's multiple comparison test).

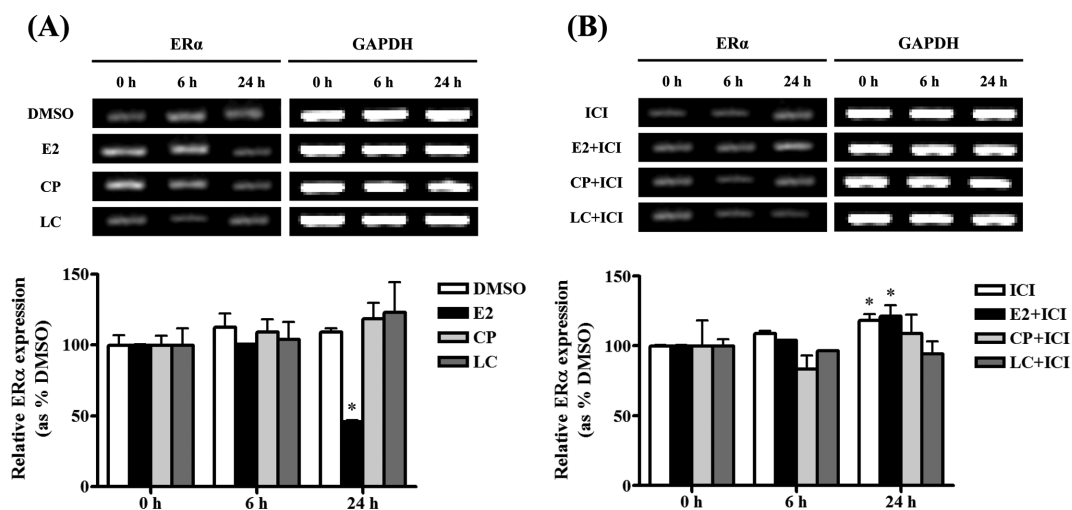


Fig. 4. Effects of pyrethroids on the expression of ERα mRNA in BG-1 ovarian cancer cells. BG-1 cells were seed in 6-well plate and treated with 0.1% DMSO, cypermethrin (10^{-5} M) and lambda-cyhalothrin (10^{-5} M) in the present (B) or absence (A) of ICI 182,780 in time-dependent manner. ERα mRNA levels were determined by RT-PCR using GAPDH (a housekeeping gene) as an internal control. Quantification of gene of ERα was conducted by scanning the densities of bands on agarose gels using Gel Doc 2000. *: Mean values were significantly different from control (0.1% DMSO), $p < 0.05$ (Dunnett's multiple comparison test).

These results indicate that cyclin D1 expression may be induced by E2 or pyrethroids via an ER dependent signaling pathway in BG-1 cells.

ER α gene expression in BG-1 cells treated with pyrethroids. In mRNA level, to identify the potential of relevance of ER-dependent signaling pathway as shown by MTT assay (Fig. 2), we further investigated relationship of ER α and pyrethroids in terms of ER-related cell proliferation using RT-PCR. However, the expression of ER α was not altered by treatment with pyrethroids, while it was reduced by E2 compared to a negative control at all time points (Fig. 4). These results suggested that pyrethroids-induced cell growth may be derived via other signaling pathways that partially involve an ER.

Effects of lambda-cyhalothrin on tumor growth in xenograft mouse model. To assess the potential of ability of lambda-cyhalothrin to stimulate estrogen-responsive tumor growth, the xenograft mice transplanted with BG-1 ovarian cancer cells were injected subcutaneously with DMSO, E2 or LC about every 3-4 days and tumor volumes were measured every 10 days during the experiments period (Fig. 5A). Since LC significantly increased the BG-1 cell proliferation at the higher concentrations of 1,000-10,000

times than that of E2 *in vitro*, we treated the mice with LC at a dose of 40 mg/kg/day, which was also 1,000 times higher than that of E2 (40 μ g/kg/day). The mice injected with 1% DMSO in PBS as a negative control showed slight change, but the mice injected with E2 as a positive control showed increased tumor growth compared to a negative control as shown in Fig. 5B. Although LC increased significantly BG-1 cell growth at 10^{-6} M in *in vitro* study, the tumor growth in xenograft mice model was not significantly increased by LC compared to a negative control. Unlike *in vitro* results, these results indicate that LC may not promote the growth of BG-1 ovarian cancer *in vivo* as shown in Fig. 5.

DISCUSSION

Previous studies reported that EDCs have a significant impact on ER expressing cancer cell proliferation such as BG-1 ovarian cancer via ER-dependent pathways (22-24). Despite many previous studies showed that SPs has weak estrogenicity in various assays, but it still is required to discover estrogenicity of SPs because these caused the estrogen dependent disease such as estrogen responsible cancer of reproductive system in humans or mammals (25).

In the cell viability assay, E2 and two pyrethroids signifi-

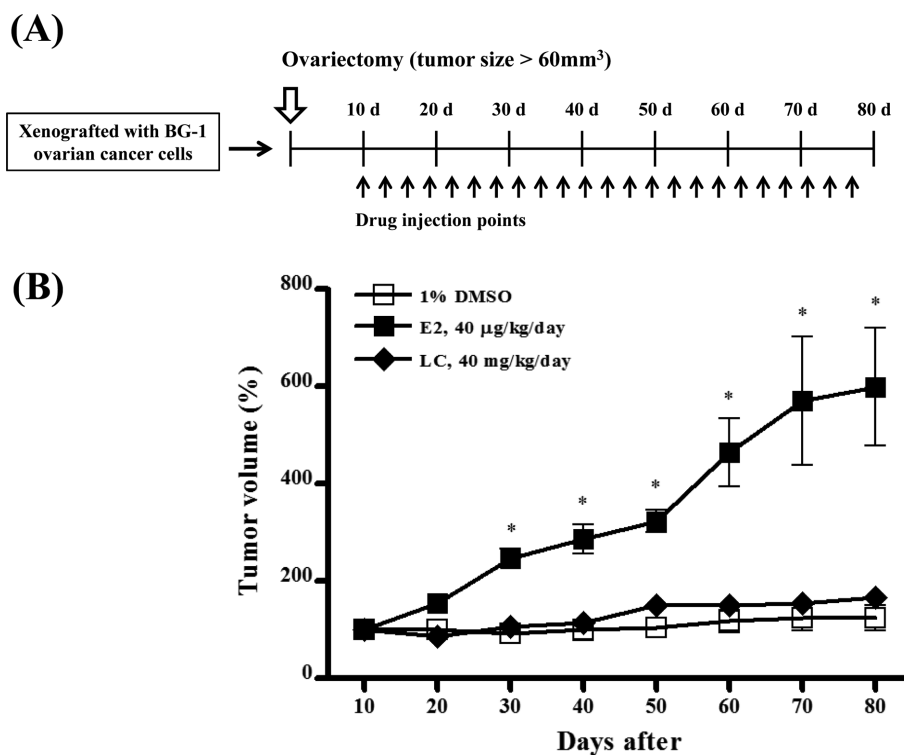


Fig. 5. Effects of lambda-cyhalothrin on the tumor growth in the absence of endogenous estrogen. The mice were injected intraperitoneally with DMSO, E2 and lambda-cyhalothrin every 3-4 days (A) and tumor volumes were measured by length \times width \times height \times 0.5236 (mm³) using a vernier calipers every 10 days during the experiment period of 80 days (B). *: Mean values were significantly different from DMSO (control), $p < 0.05$ (One-way ANOVA).

cantly increased BG-1 cell proliferation than a negative control (0.1% DMSO). And co-treatment of ICI 182,780 with E2 or two pyrethroids reversed this effect to negative control levels. These results suggest that these two-pyrethroids may have estrogenicity related with an ER dependent signaling pathway. Then, based on above cell viability results, we further investigated the expression of cyclin D1, a cell proliferation-inducing gene. RT-PCR results showed that the treatment of E2 or two-pesticides induced the increased expression of cyclin D1, while this effect was reversed by the addition of ICI 182,780, suggesting that two pyrethroids may induce the increased gene expression of cyclin D1 via an ER-dependent signaling pathway in BG-1 ovarian cells.

In the previous study, the cell growth of BG-1 cells was induced by E2 or EDCs mediated by ERs, particularly ER α than ER β (26). Thus, we identified relationship of ER α and pyrethroids that induced estrogen-responsive BG-1 cell proliferation by RT-PCR. In this study ER α was not altered by treatment of CP or LC while E2 down-regulated the expression of this gene in BG-1 cells. These results indicate that two pyrethroids-induced BG-1 cell growth may be not related with ER α expression level.

Unlike cell viability assay results *in vitro*, LC did not significantly induce BG-1 tumor growth compared to a negative control (1% DMSO) in xenograft mouse model. This lack of estrogenic activity of pyrethroids *in vivo* was occasionally shown in some previous studies (7). It is considered that these non-estrogenic effect of LC *in vivo* be caused by properties that SPs are readily metabolized *in vivo* system (13). Therefore, it is difficult to expect identical results obtained in *in vivo* compared to *in vitro* studies. In addition, the immune system to interfere with the tumor growth in live body is even more systematical controlled than *in vitro* model. Since we focused on the growth of estrogen-responsive tumor following the treatment with LC, biological toxicities involved were not considered. According to these previous reports, the reason why LC did not induce BG-1 ovarian tumor growth *in vivo* may be explained by lack of estrogenic activity of pyrethroids *in vivo* due to their easy breakdown in the body. Furthermore, rapid metabolic activity and immunity in the mouse body may contribute to the inhibition of tumor growth by LC. Since there are a lot of systematical factors to be considered in *in vivo* test, it appears to be actually difficult to correlate both *in vitro* and *in vivo* results.

In conclusion, two synthetic pyrethroids, LC and CP, may possess estrogenic potentials by stimulating the proliferation of BG-1 ovarian cancer cells via partially ER signaling pathway associated with cell cycle as E2 did, but these estrogenic effects were not found in *in vivo* xenografted mouse model. In our experiments, it is difficult to fully conclude that these two pyrethroids are EDCs. Based on these results, further studies need to be performed in diverse path-

ways and histochemical analysis of tumor tissues such as protein expression of proliferating cell nuclear antigen (PCNA), 5-bromo-2-deoxyuridine (BrdUrd), cyclin D1 as well as monitoring of tumor size change by treatment of these pyrethroids in BG-1 ovarian cancer cells.

ACKNOWLEDGEMENTS

This work was supported by the research grant of the Chungbuk National University in 2013.

CONFLICT OF INTEREST

Authors declare that there are no conflicts of interest.

REFERENCES

- Choi, K.C. and Jeung, E.B. (2003) The biomarker and endocrine disruptors in mammals. *J. Reprod. Dev.*, **49**, 337-345.
- Diamanti-Kandarakis, E., Bourguignon, J.P., Giudice, L.C., Hauser, R., Prins, G.S., Soto, A.M., Zoeller, R.T. and Gore, A.C. (2009) Endocrine-disrupting chemicals: an Endocrine Society scientific statement. *Endocr. Rev.*, **30**, 293-342.
- Hwang, K.A., Park, S.H., Yi, B.R. and Choi, K.C. (2011) Gene alterations of ovarian cancer cells expressing estrogen receptors by estrogen and bisphenol a using microarray analysis. *Lab. Anim. Res.*, **27**, 99-107.
- Korach, K.S., Chae, K., Gibson, M. and Curtis, S. (1991) Estrogen receptor stereochemistry: ligand binding and hormonal responsiveness. *Steroids*, **56**, 263-270.
- Sun, H., Xu, X.L., Xu, L.C., Song, L., Hong, X., Chen, J.F., Cui, L.B. and Wang, X.R. (2007) Antiandrogenic activity of pyrethroid pesticides and their metabolite in reporter gene assay. *Chemosphere*, **66**, 474-479.
- Garey, J. and Wolff, M.S. (1998) Estrogenic and antiprogesterone activities of pyrethroid insecticides. *Biochem. Biophys. Res. Commun.*, **251**, 855-859.
- Kunimatsu, T., Yamada, T., Ose, K., Sunami, O., Kamita, Y., Okuno, Y., Seki, T. and Nakatsuka, I. (2002) Lack of (anti-) androgenic or estrogenic effects of three pyrethroids (esfenvalerate, fenvalerate, and permethrin) in the Hershberger and uterotrophic assays. *Regul. Toxicol. Pharmacol.*, **35**, 227-237.
- Casida, J.E. (1980) Pyrethrum flowers and pyrethroid insecticides. *Environ. Health Perspect.*, **34**, 189-202.
- Liu, H., Zhao, M., Zhang, C., Ma, Y. and Liu, W. (2008) Enantioselective cytotoxicity of the insecticide bifenthrin on a human amnion epithelial (FL) cell line. *Toxicology*, **253**, 89-96.
- Liu, H., Xu, L., Zhao, M., Liu, W., Zhang, C. and Zhou, S. (2009) Enantiomer-specific, bifenthrin-induced apoptosis mediated by MAPK signalling pathway in Hep G2 cells. *Toxicology*, **261**, 119-125.
- Zhao, M., Zhang, Y., Liu, W., Xu, C., Wang, L. and Gan, J. (2008) Estrogenic activity of lambda-cyhalothrin in the MCF-7 human breast carcinoma cell line. *Environ. Toxicol. Chem.*, **27**, 1194-1200.
- Bloomquist, J.R. (1996) Ion channels as targets for insecti-

- cides. *Annu. Rev. Entomol.*, **41**, 163-190.
13. McCarthy, A.R., Thomson, B.M., Shaw, I.C. and Abell, A.D. (2006) Estrogenicity of pyrethroid insecticide metabolites. *J. Environ. Monit.*, **8**, 197-202.
 14. Glickman, A.H. and Lech, J.J. (1982) Differential toxicity of trans-permethrin in rainbow trout and mice. II. Role of target organ sensitivity. *Toxicol. Appl. Pharmacol.*, **66**, 162-171.
 15. Jin, M., Li, L., Xu, C., Wen, Y. and Zhao, M. (2010) Estrogenic activities of two synthetic pyrethroids and their metabolites. *J. Environ. Sci. (China)*, **22**, 290-296.
 16. Colborn, T., vom Saal, F.S. and Soto, A.M. (1993) Developmental effects of endocrine-disrupting chemicals in wildlife and humans. *Environ. Health Perspect.*, **101**, 378-384.
 17. Kim, I.Y., Shin, J.H., Kim, H.S., Lee, S.J., Kang, I.H., Kim, T.S., Moon, H.J., Choi, K.S., Moon, A. and Han, S.Y. (2004) Assessing estrogenic activity of pyrethroid insecticides using in vitro combination assays. *J. Reprod. Dev.*, **50**, 245-255.
 18. Du, G., Shen, O., Sun, H., Fei, J., Lu, C., Song, L., Xia, Y., Wang, S. and Wang, X. (2010) Assessing hormone receptor activities of pyrethroid insecticides and their metabolites in reporter gene assays. *Toxicol. Sci.*, **116**, 58-66.
 19. Sun, H., Chen, W., Xu, X., Ding, Z., Chen, X. and Wang, X. (2014) Pyrethroid and their metabolite, 3-phenoxybenzoic acid showed similar (anti)estrogenic activity in human and rat estrogen receptor alpha-mediated reporter gene assays. *Environ. Toxicol. Pharmacol.*, **37**, 371-377.
 20. Li, Y.F., Pan, C., Hu, J.X., Li, J. and Xu, L.C. (2013) Effects of cypermethrin on male reproductive system in adult rats. *Biomed. Environ. Sci.*, **26**, 201-208.
 21. Liu, L., Hu, J.X., Wang, H., Chen, B.J., He, Z. and Xu, L.C. (2010) Effects of beta-cypermethrin on male rat reproductive system. *Environ. Toxicol. Pharmacol.*, **30**, 251-256.
 22. Kang, N.H., Hwang, K.A., Kim, T.H., Hyun, S.H., Jeung, E.B. and Choi, K.C. (2012) Induced growth of BG-1 ovarian cancer cells by 17beta-estradiol or various endocrine disrupting chemicals was reversed by resveratrol via downregulation of cell cycle progression. *Mol. Med. Rep.*, **6**, 151-156.
 23. Park, M.A., Hwang, K.A., Lee, H.R., Yi, B.R., Jeung, E.B. and Choi, K.C. (2012) Cell growth of BG-1 ovarian cancer cells is promoted by di-n-butyl phthalate and hexabromocyclododecane via upregulation of the cyclin D and cyclin-dependent kinase-4 genes. *Mol. Med. Rep.*, **5**, 761-766.
 24. Park, M.A., Hwang, K.A., Lee, H.R., Yi, B.R., Jeung, E.B. and Choi, K.C. (2013) Benzophenone-1 stimulated the growth of BG-1 ovarian cancer cells by cell cycle regulation via an estrogen receptor alpha-mediated signaling pathway in cellular and xenograft mouse models. *Toxicology*, **305**, 41-48.
 25. Neubert, D. (1997) Vulnerability of the endocrine system to xenobiotic influence. *Regul. Toxicol. Pharmacol.*, **26**, 9-29.
 26. Hwang, K.A., Kang, N.H., Yi, B.R., Lee, H.R., Park, M.A. and Choi, K.C. (2013) Genistein, a soy phytoestrogen, prevents the growth of BG-1 ovarian cancer cells induced by 17beta-estradiol or bisphenol A via the inhibition of cell cycle progression. *Int. J. Oncol.*, **42**, 733-740.