



Clinical outcome of acute necrotizing encephalopathy in related to involving the brain stem of single institution in Korea

Cha Gon Lee, MD^{1,2}, Ji Hye Kim, MD, PhD³, Munhyang Lee, MD, PhD², Jeehun Lee MD, PhD²

¹Department of Pediatrics, Eulji General Hospital, Seoul, ²Department of Pediatrics, Samsung Medical Center, Sungkyunkwan University School of Medicine, Seoul,

³Department of Radiology and Center for Imaging Science, Samsung Medical Center, Sungkyunkwan University School of Medicine, Seoul, Korea

Purpose: Acute necrotizing encephalopathy (ANE) is a fulminant disease of the brain characterized by bilateral thalamic lesions, and is prevalent among children in East Asia. The prognosis of ANE is usually poor with a high mortality rate and neurological sequelae. This study aimed to delineate the clinical characteristics and prognostic factors of ANE.

Methods: We retrospectively analyzed clinical data of 399 pediatric patients with encephalitis who were admitted to Samsung Medical Center from December 1998 to March 2011. We enrolled ten patients (11 cases) with ANE and analyzed their demographic, clinical, and neuroimaging data. The location and extent of the brain regions were checked based on fluid-attenuated inversion recovery, T1-, and T2-weighted imaging findings; the presence of contrast enhancement, restricted diffusion, and hemorrhage.

Results: Ten patients were identified, including one patient with two episodes. The median age of onset was 1.5 years (0.4–8.4 years). The mortality rate was 40%, and only 30% of patients survived without neurological sequelae. The definite involvement of the brainstem on brain magnetic resonance imaging was significantly correlated with mortality ($P=0.04$).

Conclusion: Broad and extensive brainstem involvement suggested the fulminant course of ANE. Early diagnosis of ANE before brainstem involvement, through careful identification of symptoms of brain dysfunction, may be the best way to achieve better neurological outcomes.

Key words: Acute necrotizing encephalopathy, Pediatrics

Corresponding author: Jeehun Lee, MD, PhD
Department of Pediatrics, Samsung Medical Center, Sungkyunkwan University School of Medicine, 81 Irwon-ro, Gangnam-gu, Seoul 135-710, Korea
Tel: +82-2-3410-3539
Fax: +82-2-3410-0043
E-mail: jhlee0101@skku.edu

Received: 26 June, 2013

Revised: 4 October, 2013

Accepted: 2 February, 2014

Introduction

Acute necrotizing encephalopathy (ANE) is a novel disease entity proposed by Mizuguchi¹⁾ in 1995 characterized by rapid progression of brain dysfunction and disastrous outcome. It occurs in healthy children after a common febrile illness with typically selective symmetric involvement of the thalamus, brain stem, and cerebellum¹⁻³⁾. ANE has been reported worldwide, but the condition seems more prevalent in East Asian countries such as Japan, Taiwan, and Korea⁴⁻⁷⁾. The reported clinical course of ANE is fulminant with rapid deterioration of consciousness, convulsion and brainstem dysfunction. The mortality rate of ANE has been reported to reach about 30%, and most of the affected children die in the first week⁶⁻¹¹⁾. Survivors of ANE suffer from mild to moderate neurologic sequelae, and less than 10% of patients recover completely^{8,12)}.

There have been a few studies regarding prognostic factors of ANE such as early steroid treatment, magnetic resonance imaging (MRI) findings, or involvement of the brain stem^{2,8,12,13)}. However, additional data are still needed to firmly determine prognostic factors of

Copyright © 2014 by The Korean Pediatric Society

This is an open-access article distributed under the terms of the Creative Commons Attribution Non-Commercial License (<http://creativecommons.org/licenses/by-nc/3.0/>) which permits unrestricted non-commercial use, distribution, and reproduction in any medium, provided the original work is properly cited.

ANE. In this study, we analyzed the demographic, clinical, laboratory, and radiologic data of ten Korean children with ANE at a single institution to find out prognostic factors of ANE.

Materials and methods

1. Patients

We reviewed the medical records of 399 pediatric patients (≤ 18 years old) with encephalitis who were admitted to Samsung Medical Center (Seoul, Korea) from December 1998 to March 2011. This study included patients who diagnosed with ANE based on the criteria proposed by Mizuguchi¹⁾, acute encephalopathy following viral disease with rapid deterioration of consciousness, absence of cerebrospinal fluid (CSF) pleocytosis, increase in CSF protein, neuroimaging findings of symmetric brain lesions involving the bilateral thalami, elevated serum aminotransferase to a variable degree, no increased blood ammonia, and clinical absence of other diseases resembling ANE. We exclude other resembling diseases, suggested by that Mizuguchi¹⁾, such as overwhelming bacterial and viral infections, fulminant hepatitis, Reye syndrome, other toxin induced disease, Leigh encephalopathy and related mitochondrial cytopathies, Wernicke encephalopathy, acute disseminated encephalomyelitis or other types of encephalitis, vasculitis, cerebral infarction, and so on.

2. Clinical and radiologic data

In each episode, clinical data were collected based on the retrospective chart review including sex, age, initial clinical manifestations, clinical course, initial laboratory findings, electroencephalography (EEG) findings, causative organism of associated febrile

illness, treatment modalities, and outcome.

Neuroimaging was reviewed by a neuroradiologist. The location and extent of signal abnormalities were checked by brain computed tomography (CT) or MRI with fluid-attenuated inversion recovery (FLAIR), T1-, and T2-weighted images. The presence of contrast enhancement in the lesions was also identified. For differentiation of cytotoxic and vasogenic edema of the lesions, diffusion-weighted imaging (DWI) and apparent diffusion coefficient (ADC) map images were used. Vasogenic edema (interstitial edema) usually shows high-signal intensity on DWI with an increased ADC map. However, cytotoxic edema (cellular swelling) expresses high-signal intensity on DWI and low-signal intensity on ADC maps. Detection of hemorrhage in the lesion was aided using T2- and T1-weighted images and gradient-echo imaging in patients with MRI. Neuroimaging findings were analyzed by the distribution, pattern and presence of hemorrhage. We paid particular attention to the analysis of the extent and signal intensity of brain stem lesions, the midbrain, pons, and medulla oblongata, for the identification of prognostic factors. The findings of brain stem involvement were as follows: diffuse broad hypointensity on CT, broad hyperintensity on T2-weighted/FLAIR MRI, diffusion restriction (cytotoxic edema) on DWI/ADC, and hemorrhage. The brain stem lesions were divided into three groups (none, mild, and definite) based on extent and signal-intensity as followed: none defined as absent involvement, mild defined as extent of involvement in below 2 lesions among midbrain, pons, and medulla oblongata and subtle signal change without diffusion restriction and hemorrhage, and definite defined as broad extent more than three or marked signal change with diffusion restriction or hemorrhage.

Ethical approval for this retrospective study was provided by the Institutional Review Board of Samsung Seoul Medical Center

Table 1. The patients' characteristics and antecedent infections

Case	Pt.	Sex	Median age (yr)	Underline disease	Antecedent viral illness	Confirmed organisms
1	1	M	4.3	Pure red cell aplasia	Vomiting, mild fever (37.8°C)	Parainfluenza virus type 3 ^{†,‡}
2	2	M	0.4	None	Diarrhea, poor oral intake, mild fever (37.5°C)	None
3	3	F	1.2	Neonatal seizure, DD	Vomiting, mild fever (37.5°C),	None
4	4	F	3.4	None	Cough, irritability, vomiting, fever (40°C)	Influenza virus B ^{†,§}
5	5*	M	1.0	None	Rhinorrhea, diarrhea, fever (39°C)	Influenza virus A (H1N1) ^{†,‡}
6	5*	M	1.9	None	Coryza, irritability, fever (40°C)	Influenza A virus ^{‡,**,††}
7	6	F	1.5	Cerebellar ataxia, DD, Leber congenital amaurosis	Cough, irritability, fever (39°C)	None
8	7	F	0.7	None	Cough, vomiting, diarrhea, irritability, fever (38°C)	Parainfluenza virus type 1 ^{†,‡}
9	8	M	3.1	None	Cough, rhinorrhea, mild fever (37.8°C)	None
10	9	M	8.4	Hypogammaglobulinemia	Cough, fever (40°C)	Influenza virus A ^{†,§}
11	10	M	1.1	Right 5th toe polydactyly	Cough, coryza, vomiting	Rotavirus ^{§,††}

DD, developmental delay; CSF, cerebrospinal fluid; PCR, polymerase chain reaction.

*Same patients with recurrent events. [†]Nasopharyngeal aspirates. [‡]Nasal swab/CSF. [§]Stool. ^{||}Respiratory virus PCR. [¶]Respiratory virus culture. ^{**}H1N1 real time PCR.

^{††}Rotavirus antigen test.

in Seoul, Korea (SMC 2011-04-104-002).

Data are presented as median and range. Statistical analysis was performed to identify different factors between death and survival groups with the Fisher exact test. And the predictors of mortality in ANE was estimated using multivariate Cox regression and Mann-Whitney test with PASW Statistics 18.0 (SPSS Inc., Chicago, IL, USA). The statistical significance threshold was set at $P < 0.05$ corrected.

Results

1. Patient characteristics and clinical presentation

Of the 399 pediatric patients, we identified ten patients (male:

female=6:4) with ANE, including a patient with two episodes (Table 1). The median age of onset was 1.5 years (0.4–8.4 years). Family history of ANE was unremarkable in all patients. None had any recent immunization.

The clinical characteristics of the patients and the clinical presentations of viral illness are summarized in Table 1. Prior to the onset of ANE, nine patients showed fever, and all children had symptoms of viral illness; upper respiratory tract infection (n=6), acute gastroenteritis (n=7) and acute pharyngo-tonsillitis (n=2). The median body temperature was 38.5°C (37.5°C–40°C) during the antecedent febrile illness. The first sign of encephalopathy appeared after a median of four days (1–9 days) from the onset of antecedent infection (Table 2). Altered mental status was observed in all cases: drowsiness (n=10, including recurrent case) and confusion (n=1). Nine patients (90%) had seizures (generalized

Table 2. Clinical course and management during admission

Pt.	Viral illness-encephalopathy (day)	Presentation of encephalopathy	Maximum level of mental status deterioration	ICU care (day)	Intubation	Hemodynamic support	Steroid pulse	IVIg	Outcome mortality	Neurologic impairment
1	3	Drowsy, tremor	Coma	230	Done	Done	Used	Used	Dead	
2	4	Drowsy, seizure (GT)	Drowsy	1	Not done	Not done	Used	Used	Alive	
3	2	Drowsy, seizure (CPS)	Coma	14	Done	Done	Not used	Not used	Dead	
4	5	Drowsy, seizure (GTC)	Drowsy	15	Not done	Not done	Used	Not used	Alive	
5*	9	Drowsy	Stupor	3	Not done	Not done	Used	Used	Alive	DLD, epilepsy
5*	9	Drowsy, seizure (PS)	Drowsy	0	Not done	Not done	Used	Used	Alive	DLD, epilepsy
6	4	Drowsy, seizure (CPS)	Confusion	2	Not done	Not done	Not used	Used	Alive	
7	4	Drowsy, seizure (GTC)	Coma	8	Done	Done	Used	Used	Dead	
8	5	Drowsy, seizure (GT)	Confusion	8	Not done	Not done	Used	Used	Alive	
9	1	Confusion, seizure (CPS)	Coma	4	Done	Done	Not used	Not used	Dead	
10	1	Drowsy, seizure (GT)	Coma	13	Done	Not done	Used	Not used	Alive	DLD, motor deficit

ICU, intensive care unit; IVIg, intravenous immunoglobulin; GT, general tonic; CPS, complex partial seizure; GTC, generalized tonic clonic seizure; DLD, developmental language delay; PS, partial seizure.

*Same patients with recurrent events.

Table 3. Radiological characteristics of 11 Episodes

Patient	Image	DWI	ADC map	Involvement	Stem involvement	Result of patient
1	CT			Th, BG, MD, Pons	Definite	Death
2	MRI			Th, BG, MD, Pons, Cbll, SP, WM, IC	Definite	Normal
3	MRI			Th, BG, MD, Pons, MO, IC, EC	Definite	Death
4	MRI	No change	No change	Th, MD, Pons	Mild	Normal
5*	MRI	HIS	LIS	Th, BG, Pons, GM	Mild	DD, epilepsy
5*	MRI	HIS	LIS	Th, BG, WM, GM	None	DLD, transient motor deficit, epilepsy
6	MRI	LIS	HIS	Th (asymmetric), Pons	Mild	Normal
7	MRI	HIS	LIS	Th, WM, GM	None	Death
8	MRI	HIS	LIS	Th, Cbll, WM, IC	None	Normal
9	CT			Th, MD, Pons	Definite	Death
10	MRI			Th, BG, Cbll, EC	None	DLD, motor deficit

DWI, diffusion-weighted image; ADC, apparent diffusion coefficient; CT, computed tomography; MRI, magnetic resonance imaging; Th, thalamus; BG, basal ganglia; MD, midbrain; Cbll, cerebellum; Sp, spines; WM, white matter; IC, internal capsule; MO, medulla oblongata; EC, external capsule; HIS, high-intensity signals; LIS, low-intensity signals; GM, gray matter; DLD, developmental language delay.

*Same patients with recurrent events.

seizure, n=5; complex partial seizure, n=4). They were managed with various anticonvulsants (phenytoin, n=8; phenobarbital, n=5; topiramate, n=1; carbamazepine, n=1; levetiracetam, n=1). The seizures occurred in the initial phase when the deterioration of consciousness appeared. The seizures were well controlled with antiepileptic drugs without recurrence during hospitalization. Progression of encephalopathy to maximum level of mental status deterioration occurred between two to twelve days after the initial viral illness. The lowest level of consciousness ranged from drowsy to coma (Table 2).

2. Neuroimaging

The neuroimaging findings are summarized in Table 3. Eight

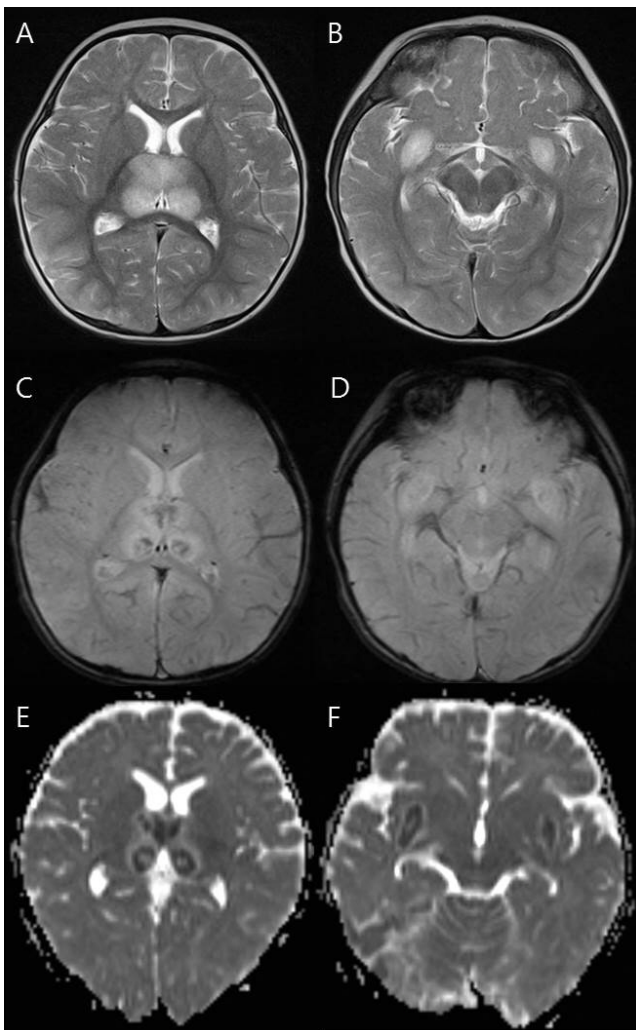


Fig. 1. Magnetic resonance imaging findings of a 9-month-old girl (patient 7) who died. (A, B) T2-weighted axial images show increased signal intensity in the thalami and medial temporal lobe. (C, D) Axial gradient-echo images show decreased signal intensity in the thalami and medial temporal lobe indicating hemorrhage. (E, F) Apparent diffusion coefficient images reveal hypointensity in the thalami and medial temporal lobe.

patients were evaluated with both brain CT and MRI. However, two patients (patients 1 and 9) underwent only brain CT, because they were clinically too unstable to have brain MRI. The abnormalities in brain MRI were most well defined by T2-weighted images and FLAIR sequences (Fig. 1).

Every patient showed symmetric involvement of the thalamus, however, patient 6 showed bilateral but asymmetric (left>right) thalamic involvement (Fig. 2). She had a milder clinical course (confused mental status and intensive care unit [ICU] care for only two days), and completely recovered without neurologic sequelae and no residual lesions on follow-up brain MRI.

Cervical spinal cord lesions were observed in patient 2 (Fig. 3). He had extensive involvement of the brain including the bilateral thalami, basal ganglia, broad brain stem and cerebellum.

Seven cases (63.6%) had brain stem involvement. We analyzed the extent (the midbrain, pons, and medulla oblongata) and signal-intensity of brain stem lesions. The extent and signal-intensity of brain stem lesions were divided into three groups: absent signal change (none, n=4), subtle signal change (mild, n=3), and broad extent and marked signal change (definite, n=4). The findings of brain stem involvement were as follows: diffuse broad hypointensity on CT, broad hyperintensity on T2-weighted/

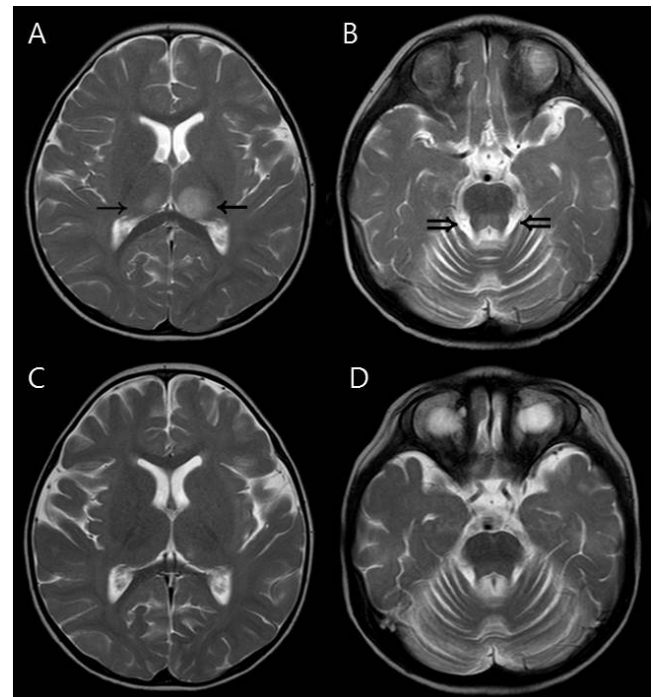


Fig. 2. Magnetic resonance imaging findings of a 19-month-old girl (patient 6) who had asymmetric (left dominant) thalamic involvement and recovered completely. (A, B) Initial T2-weighted axial image showing asymmetric increased signal intensity in the thalami (arrows). The dorsal pons (double arrows) was also involved. (C, D) These abnormal signal intensities disappeared on follow-up magnetic resonance images obtained one week after the initial study.

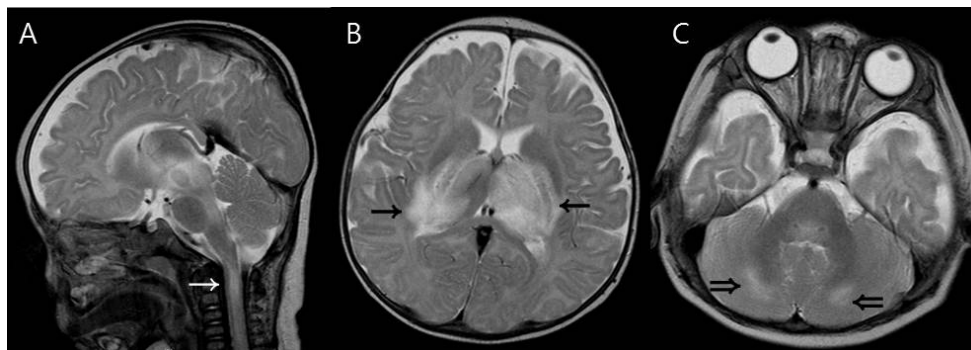


Fig. 3. Magnetic resonance imaging findings of a 5-month-old boy (patient 2) who had upper cervical spinal cord involvement. (A) T2-weighted sagittal image shows a high signal intensity lesion in the upper cervical spinal cord (white arrow). (B, C) T2-weighted axial images show increased signal intensity in the thalami (arrows) and cerebellum (double arrows).

FLAIR MRI, diffusion restriction (cytotoxic edema) on DWI/ADC, and hemorrhage.

3. Electroencephalography

All patients underwent EEG during acute encephalopathic periods. Ten cases (10/11, 91%) initially showed abnormal EEG. The EEG revealed diffuse encephalopathic findings characterized by diffuse background slow activity (n=6) or voltage suppression (n=3) on cerebral background rhythm. In addition, regional intermittent slow (n=1) and focal epileptiform activities (n=3) were observed. EEG seizure was recorded in two patients (patient 3 and 10).

4. Laboratory data

Mild elevation of liver transaminases was found in ten cases. The median level of aspartate aminotransferase was 53 U/L (27–209 U/L), and the median level of alanine aminotransferase was 31 U/L (15–242 U/L). The metabolic tests such as serum amino acid analysis, serum ammonia and lactate/pyruvate level, and urine organic acid analysis were all normal. Lumbar puncture was performed in eight patients (73%); cerebrospinal fluid (CSF) pleocytosis (>5/L) was found in four patients (9–175/μL), and increased CSF protein (>45 mg/dL) was found in five patients (88–246 mg/dL). Pathogens responsible for antecedent infections were identified in 63.6% of cases (7/11) (Table 1).

5. Treatment

The clinical course and management during their hospital admission are summarized in Table 3. All patients were admitted to the pediatric ICU, but patient 5 was cared in the general ward for the second episode. Patient 1 received unusual long term ICU care for 230 days after the diagnosis of brain death, because the parents wanted continuous care until cardiac death. The median duration of ICU stay in nine patients except patient 1 was eight days, from 1 to 15 days. Until the patients were diagnosed as having ANE

with brain imaging and were ruled out of other possible causes, we provided treatment for possible viral encephalitis or bacterial meningitis such as vancomycin, third-generation cephalosporin, or acyclovir. We also prescribed oseltamivir to patients who had positive results for Influenza A or B. Intravenous immunoglobulin (IVIg, total 2 g/kg for 2–5 days) and high-dose steroids (methylprednisolone 15–30 mg/kg/day for 3 or 5 days) were used to treat ANE: both intravenous IVIg and high-dose steroid therapy (n=6), IVIg only therapy (n=1), and high-dose steroid therapy (n=2). These patients started treatment within 24 hours after diagnosis with ANE. Two patients (patient 3 and 9) were not treated with IVIg or high-dose steroid therapy. Patient 3 was transferred to our hospital in a comatose state and was confirmed the diagnosis of brain death the next day. Therefore, we did not try either IVIg or high dose steroids on the patient. The patient died two weeks after conservative management. Patient 9 was also transferred to our hospital in a comatose state, and he was declared brain death on the third day of admission and died on the fifth hospital day.

6. Outcome and prognostic factors

The overall mortality rate was 40% (4/10). Three patients became brain death within three days from the day of mental status change. The median follow-up duration of six survivors was 3.3 years (range, 1.6–5.6 years). Neurological impairments such as motor deficits, developmental language delay and epilepsy were observed in three of six survivors. Definite involvement of the brain stem in brain imaging exhibited a significant statistical association with mortality ($P=0.041$) by multivariate Cox regression and Mann-Whitney test. As stated above, patients had no sooner started the IVIg or high-dose steroid therapy than they diagnosed with ANE. Therefore, the length of time between symptom onset and treatment was almost equal to that from symptom onset to diagnosis. There were no statistical associations between mortality and the factors studied; age, duration from symptom

Table 4. Factors associated with increased mortality

Factor	<i>P</i> value*	<i>P</i> value [†]
Definite involvement of brain stem in brain imaging	0.041	0.088
Presence of minimal brain stem lesion in brain imaging	0.547	1.000
Presence of brain hemorrhage in brain imaging	0.305	0.546
Age	0.102	
Sex	0.431	0.576
Duration from symptom onset to diagnosis/treatment	0.129	0.258 [‡]
Causative agent of antecedent infection	0.608	1.000
Treatment		
Steroid	0.121	0.491
IVIg	0.486	0.576

**P* values by Cox regression. [†]*P* values by Fisher exact test. [‡]*P* values by Mann-Whitney test.

onset to diagnosis and treatment, causative agent of antecedent infection, brain hemorrhage and use of steroids or IVIG (Table 4).

Discussion

This study delineated the clinical characteristics, various disease courses and prognosis of ANE patients at a single institution and revealed that definite involvement of the brain stem noted by brain imaging is a significant prognostic factor of ANE.

ANE in childhood is rare. It is a fulminant and life-threatening neurologic disease that usually occurs in healthy children. The reported mortality rates are as high as 30%^{1,13}. In this study, the mortality rate was 40% which is similar to that of previous studies. Severe neurologic sequelae have been reported in 15%–35% of survivors, such as intention tremor, ataxic gait, hemiparesis, quadriplegia, athetosis, dysarthria, abnormalities of extraocular motility, and mental slowing^{1,6,13}. In the present study, three of six survivors showed neurologic sequelae such as motor deficits and language developmental delay.

There have been many studies to identify prognostic factors associated with ANE. According to previous studies, age, sex, and the presence of causative agent were not significant prognostic factors, which are consistent with the findings in this study^{1,14,15}. In 2009, Okumura et al.¹⁶ evaluated the relation between outcome and treatment with steroids or IVIG in 34 children with ANE. They advocated that IVIG is not correlated with outcome but steroid treatment within 24 hours after the onset was related to the better outcomes in patients without brainstem lesions. In this study, however, steroid treatment within 24 hours of symptom onset was not associated with outcome.

In the present study, definite radiologic involvement of the brain stem was significantly associated with mortality. The relationship between characteristic MRI findings and outcome has also been reported in several previous studies. Kim et al.⁶

reported that the presence of hemorrhage and localized atrophy in MRI is a significant prognostic factor. Moreover, some studies showed that involvement of extra thalamic lesions such as the brain stem is more correlated with poor clinical outcomes¹⁶. Wong et al.⁸ documented positive correlations between: clinical outcome and the MRI score; and the location of brain stem and/or white matter involvement and the presence of hemorrhage and/or cavitation. Unlike previous studies, we evaluated the relationship between the severity and extent of brainstem lesions and mortality. In this context, a broad extent and a definite signal change of brainstem lesions were significantly correlated with mortality. We therefore suggest that involvement of the brainstem is a sign of a profound progression of the disease. Extensive brainstem lesions with extensive damage in the medullar and pons were followed by severe brainstem dysfunction characterized by respiratory insufficiency, sudden cardiopulmonary collapse and neurogenic pulmonary edema, all of which could explain the high mortality rate of this disease. In our study, steroid treatment in those patients with a broad extent and a definite signal change of the brainstem resulted in no improvement in outcome. We did not observe a statistical correlation for treatment start time.

There was a patient with cervical spinal cord involvement (Fig. 3). This patient's brain MRI revealed extensive involvement of the deep cortex, brain stem, cerebellum, and upper cervical cord. The lesion was discrete and confined to the C1 and C2 cervical spine. He showed decreased motor power in both upper extremities. We suspected that spinal cord involvement is possible in children with severe extensive ANE. There has been only one report about spinal cord involvement in ANE¹⁷. That case had clinical symptoms of spinal cord lesions, such as acute urinary retention, but revealed reversible favorable outcome. Contrary to our case, the extent of ANE in that case was limited to the bilateral thalami and frontal periventricular white matter. Evaluation of the spinal cord is recommended for adequate management of patients who show spinal symptoms or extensive cerebral lesions.

Most cases of ANE are sporadic and do not recur. However, familial and recurrent cases have been reported, and some of them were linked to mutations in RAN-binding protein2 (RANBP2)^{13,18,19}. Recurrent or familiar ANE is considered an abnormal immune response, a cytokine storm that is triggered by an environmental stimulus in genetically susceptible individuals. In our study, patient 5 experienced recurrent episodes but not disease relapse. We performed the RANBP2 mutation test on patient 5. However, we did not find any mutations in the coding region of RANBP2²⁰.

This study has a limitation stemming from the rarity of the disease. Patients were treated at a single institution but managed over a long time period, under different clinical situations.

In conclusion, definite involvement of brainstem on brain MRI was associated with the fulminant course of ANE. Early diagnosis

and prompt treatment of ANE before brainstem involvement through the close observation of symptoms of brainstem dysfunction in patients with mental status change after a febrile illness may ensure the better neurological outcome.

Conflict of interest

No potential conflict of interest relevant to this article was reported.

References

1. Mizuguchi M. Acute necrotizing encephalopathy of childhood: a novel form of acute encephalopathy prevalent in Japan and Taiwan. *Brain Dev* 1997;19:81-92.
2. Campistol J, Gassio R, Pineda M, Fernandez-Alvarez E. Acute necrotizing encephalopathy of childhood (infantile bilateral thalamic necrosis): two non-Japanese cases. *Dev Med Child Neurol* 1998;40:771-4.
3. Mizuguchi M, Hayashi M, Nakano I, Kuwashima M, Yoshida K, Nakai Y, et al. Concentric structure of thalamic lesions in acute necrotizing encephalopathy. *Neuroradiology* 2002;44:489-93.
4. Goo HW, Choi CG, Yoon CH, Ko TS. Acute necrotizing encephalopathy: diffusion MR imaging and localized proton MR spectroscopic findings in two infants. *Korean J Radiol* 2003;4:61-5.
5. Kim TK, Eun BL, Cha SH, Chung KB, Kim JH, Kim BH, et al. Moya-moya disease in a child with previous acute necrotizing encephalopathy. *Pediatr Radiol* 2003;33:644-7.
6. Kim JH, Kim IO, Lim MK, Park MS, Choi CG, Kim HW, et al. Acute necrotizing encephalopathy in Korean infants and children: imaging findings and diverse clinical outcome. *Korean J Radiol* 2004;5:171-7.
7. Seo HE, Hwang SK, Choe BH, Cho MH, Park SP, Kwon S. Clinical spectrum and prognostic factors of acute necrotizing encephalopathy in children. *J Korean Med Sci* 2010;25:449-53.
8. Wong AM, Simon EM, Zimmerman RA, Wang HS, Toh CH, Ng SH. Acute necrotizing encephalopathy of childhood: correlation of MR findings and clinical outcome. *AJNR Am J Neuroradiol* 2006;27:1919-23.
9. Mizuguchi M. Acute necrotizing encephalopathy. *Nihon Rinsho* 2011;69:465-70.
10. Davies NW, Sharief MK, Howard RS. Infection-associated encephalopathies: their investigation, diagnosis, and treatment. *J Neurol* 2006;253:833-45.
11. Weitkamp JH, Spring MD, Brogan T, Moses H, Bloch KC, Wright PF. Influenza A virus-associated acute necrotizing encephalopathy in the United States. *Pediatr Infect Dis J* 2004;23:259-63.
12. Huang SM, Chen CC, Chiu PC, Cheng MF, Lai PH, Hsieh KS. Acute necrotizing encephalopathy of childhood associated with influenza type B virus infection in a 3-year-old girl. *J Child Neurol* 2004;19:64-7.
13. Marco EJ, Anderson JE, Neilson DE, Strober JB. Acute necrotizing encephalopathy in 3 brothers. *Pediatrics* 2010;125:e693-8.
14. Wang HS, Huang SC. Acute necrotizing encephalopathy of childhood. *Chang Gung Med J* 2001;24:1-10.
15. Mizuguchi M, Iai M, Takashima S. Acute necrotizing encephalopathy of childhood: recent advances and future prospects. *No To Hattatsu* 1998;30:189-96.
16. Okumura A, Mizuguchi M, Kidokoro H, Tanaka M, Abe S, Hosoya M, et al. Outcome of acute necrotizing encephalopathy in relation to treatment with corticosteroids and gammaglobulin. *Brain Dev* 2009;31:221-7.
17. Weng WC, Peng SS, Lee WT. Acute necrotizing encephalopathy of childhood with spinal cord involvement: a case report. *J Child Neurol* 2010;25:1539-41.
18. Neilson DE, Feiler HS, Wilhelmsen KC, Lynn A, Eiben RM, Kerr DS, et al. Autosomal dominant acute necrotizing encephalopathy maps to 2q12.1-2q13. *Ann Neurol* 2004;55:291-4.
19. Neilson DE, Eiben RM, Waniewski S, Hoppel CL, Varnes ME, Bangert BA, et al. Autosomal dominant acute necrotizing encephalopathy. *Neurology* 2003;61:226-30.
20. Lee JH, Lee M, Lee J. Recurrent acute necrotizing encephalopathy in a Korean child: the first non-Caucasian case. *J Child Neurol* 2012;27:1343-7.