

# A Fatal Case of *Naegleria fowleri* Meningoencephalitis in Taiwan

Mei-Yu Su<sup>1</sup>, Ming-Shih Lee<sup>1,2</sup>, Ling-Yuh Shyu<sup>3</sup>, Wei-Chen Lin<sup>4</sup>, Pei-Ching Hsiao<sup>5</sup>, Chi-Ping Wang<sup>1,2</sup>, Dar-Der Ji<sup>4,6</sup>, Ke-Min Chen<sup>3</sup> and Shih-Chan Lai<sup>3,\*</sup>

<sup>1</sup>Clinical Laboratory, Chung Shan Medical University Hospital, Taichung, Taiwan; <sup>2</sup>Department of Medical laboratory and Biotechnology, Chung Shan Medical University, Taichung, Taiwan; <sup>3</sup>Department of Parasitology, Chung Shan Medical University, Taichung, Taiwan; <sup>4</sup>Center for Research and Diagnostics, Centers for Disease Control, Taipei, Taiwan; <sup>5</sup>Department of Internal Medicine, Chung Shan Medical University Hospital, Taichung, Taiwan; <sup>6</sup>Department of Tropical Medicine, National Yang-Ming University, Taipei, Taiwan

**Abstract:** After bathing at a hot spring resort, a 75-year-old man presented to the emergency department because of seizure-like attack with loss of consciousness. This is the first case of primary amebic meningoencephalitis (PAM) caused by *Naegleria fowleri* in Taiwan. PAM was diagnosed based on detection of actively motile trophozoites in cerebrospinal fluid using a wet-mount smear and the Liu's stain. The amoebae were further confirmed by PCR and gene sequencing. In spite of administering amphotericin B treatment, the patient died 25 days later.

**Key words:** *Naegleria fowleri*, meningoencephalitis, fatal case, amphotericin B, Taiwan

## INTRODUCTION

*Naegleria fowleri*, *Acanthamoeba* spp., and *Balamuthia mandrillaris* have been recognized as etiologic agents of encephalitis [1,2]. *N. fowleri* causes primary amebic meningoencephalitis (PAM), a rapidly fatal disease, while *Acanthamoeba* spp. and *B. mandrillaris* cause chronic granulomatous encephalitis [3]. *N. fowleri* is commonly found in warm freshwater environments such as hot springs, lakes, natural mineral water, and resort spas frequented by tourists [4]. Infection can occur when *N. fowleri* enter the nasal passages, attach to the olfactory mucosa, and migrate along the olfactory nerve tracts, crossing the cribriform plate to the brain [5]. Once *N. fowleri* infects the central nervous system (CNS), it divides rapidly and death can occur within 1 to 2 weeks [1].

## CASE REPORT

A 75-year-old man presented to a local hospital complaining

of headache, fever, and right arm myoclonic seizures. He had mild leukocytosis; however, there was no indication of intracerebral hemorrhage or other obvious abnormalities. He was transferred to Chung Shan Medical University Hospital (Taichung, Taiwan) due to sudden onset of convulsion and right side limbs weakness. The neurologist diagnosed a CNS infection and seizure of unknown etiology and admitted the patient to Coronary Care Unit for further evaluation and treatment.

Laboratory studies showed a total leukocyte count of 12,190/μl (with 94.6% neutrophils, 3.0% lymphocytes, and 2.2% monocytes), and a platelet count of 148,000/μl. The clinical biochemistry data showed blood urea nitrogen at 22.48 mg/dl, a blood sugar (ac) level of 175 mg/dl, a blood sugar (pc) level of 255 mg/dl, and C-reactive protein level of 2.85 mg/dl. The serologic result for HIV was negative. Blood cultures of bacteria and fungi were negative. Magnetic resonance (MR) imaging of the patient's brain showed that sagittal and axial post-gadolinium T1-weighted images revealed diffuse leptomeningeal enhancement along the brain surface, including the brainstem, frontal lobe, and cerebellum. A contrast-enhanced computed tomography (CT) scan showed diffuse leptomeningeal enhancement and subarachnoid and intraventricular hemorrhages.

A lumbar puncture was performed and showed slightly-turbid cerebrospinal fluid (CSF) with 4 mg/dl glucose, 954.1 mg/

•Received 19 June 2012, revised 24 July 2012, accepted 26 July 2012.

\*Corresponding author (shih@csmu.edu.tw)

© 2013, Korean Society for Parasitology and Tropical Medicine

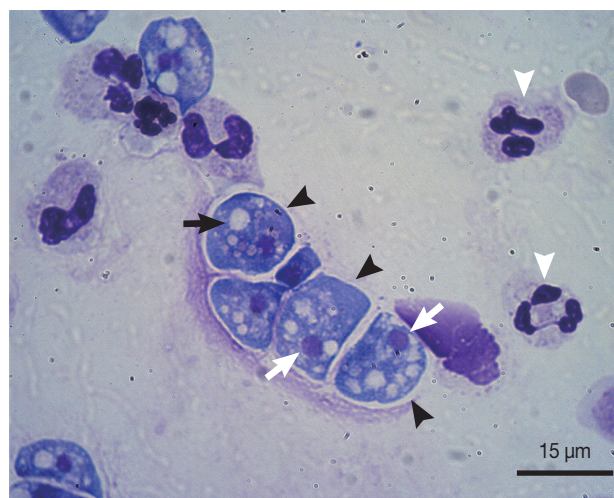
This is an Open Access article distributed under the terms of the Creative Commons Attribution Non-Commercial License (<http://creativecommons.org/licenses/by-nc/3.0>) which permits unrestricted non-commercial use, distribution, and reproduction in any medium, provided the original work is properly cited.

dl protein, and a leukocyte count of 560/ $\mu$ l with 90.5% neutrophils, 5.0% lymphocytes, and 4.5% monocytes. India ink preparations, acid-fast stains and Gram stains for bacteria and fungi were all negative. The CSF was negative for viral detection. Also, CSF cultures for bacteria and fungi were negative.

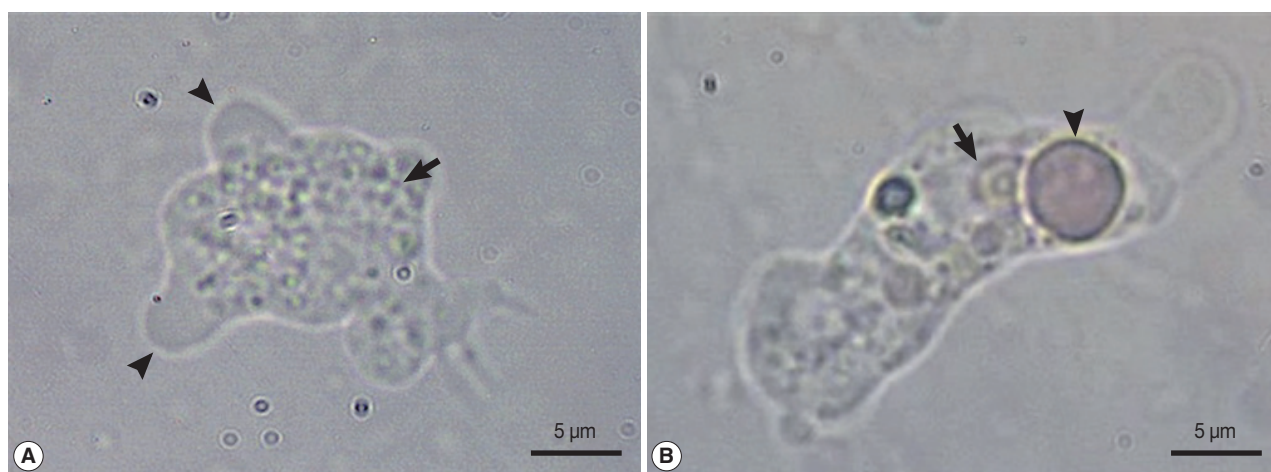
A wet-mount CSF smear revealed numerous trophozoites of approximately 10-25  $\mu$ m size, which moved rapidly and directionally by pseudopodia. The cytoplasm of the trophozoites contained granular, abundant vacuoles. The amoeba was identified as *N. fowleri* (Fig. 1). A cytospin preparation was used to examine the CSF and the CSF sediment preparations were fixed with Liu's stain, which revealed amoebae containing nuclei and numerous cytoplasmic vacuoles (Fig. 2). *N. fowleri* infection was diagnosed and intravenous amphotericin B (50 mg q.d.) was started.

The CSF specimen obtained during hospitalization was examined at the Centers for Disease Control (CDC) of Taiwan. *N. fowleri* infection was confirmed by PCR analysis using the primers Nae3-F (5'-CAA ACA CCG TTA TGA CAG GG-3') and Nae3-R (5'-CTG GTT TCC CTC ACC TTA CG-3') to amplify fragments of a 183-bp product [6]. For the detection of *Acanthamoeba* spp., primers AcantF900 (5'-CCC AGA TCG TTT ACC GTG AA-3') and AcantR1100 (5'-TAA ATA TTA ATG CCC CCA ACT ATC C-3') were used to amplify fragments of a 180 bp product [7]. *N. fowleri* Carter strain (American Type Culture Collection; ATCC no. 22758, Manassas, Virginia, USA) and *A. castellanii* Neff strain (ATCC 30010) were used as positive controls. The PCR products (Fig. 3) were visualized after electrophoresis on 2% agarose gels, where only a 183 bp amplicon

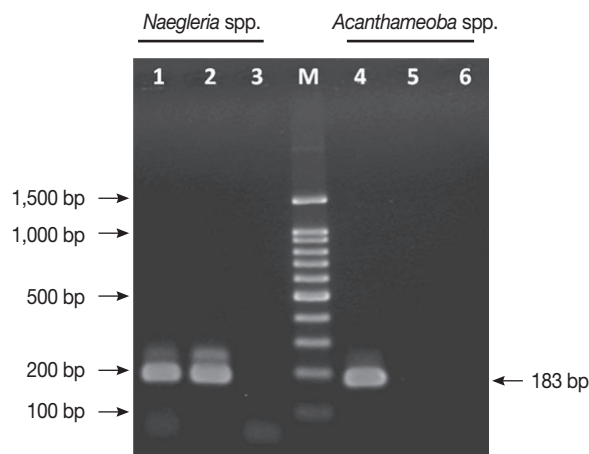
of *Naegleria* spp. was detected in the CSF specimen, but no band for *Acanthamoeba* spp. was detected. For further confirmation, the PCR product was subjected to DNA sequencing to identify the species. The 183 bp PCR product showing higher similarity percentage to *N. fowleri* using the BLAST algorithm at the National Center for Biotechnology Information (NCBI) website (<http://blast.ncbi.nlm.nih.gov/>). Although amphotericin B treatment was started immediately, the patient fell into coma. After 21 days of hospitalization, his health condition showed unstable hemodynamics and brain death. At 25 days post-treatment (beginning of treatment), the patient sustained



**Fig. 2.** Liu's stain of a cerebrospinal fluid specimen. Microscopic examination revealed numerous *Naegleria fowleri* trophozoites (black arrowheads) containing nuclei (blank arrows) and numerous cytoplasmic vacuoles (black arrow). Blank arrowheads indicate leukocytes.



**Fig. 1.** Motile forms of *Naegleria fowleri* trophozoites in cerebrospinal fluid. (A) A motile *N. fowleri*, showing directional movements by means of blunt, bulbous pseudopodia (arrowheads), with granular cytoplasm (arrow). (B) The trophozoite is characterized by a nucleus (arrow) and phagocytizing an erythrocyte (arrowhead).



**Fig. 3.** Identification of *Naegleria fowleri* by PCR. Lane 1. Positive control for *Naegleria* spp. Lane 2. DNA from the patient CSF for *Naegleria* spp. Lane 3. Negative control for *Naegleria* spp. Lane 4. Positive control for *Acanthamoeba* spp. Lane 5. DNA from the patient CSF for *Acanthamoeba* spp. Lane 6. Negative control for *Acanthamoeba* spp. M; 100-bp DNA ladder.

to suffer from severe shock, followed by PAM and multiple organ failure leading to the patient's death.

## DISCUSSION

*N. fowleri* is a thermophilic amoeba that grows well in tropical and subtropical climates and can tolerate temperatures up to 45°C [1,8]. Warm fresh water coupled with a bacterial food supply is an ideal habitat for amoebae. *N. fowleri* has a tendency to live in naturally or artificially heated water in spas, hot springs, warm rivers, ponds, lakes, saunas and indoor swimming pools [1,9]. In this case, the CDC of Taiwan analyzed the hot springs and confirmed the water contained *N. fowleri*. Thus, the hot springs were possibly the source of infection. Based on these results, hot spring water may be a threat to human health, and exposure to warm fresh water should be considered a possible causative agent of amoebic meningoencephalitis. Also, it is important to rapidly detect thermotolerant amoebae in hot springs where people swim and bathe because of the possible impact on human health.

Based on clinical and laboratory diagnoses, *N. fowleri* causes PAM, which is difficult to distinguish from bacterial meningoencephalitis. Therefore, it usually leads to an incorrect diagnosis. Once the CSF analysis indicates purulent meningitis without bacteria, PAM should be suspected [2,3]. The diagnosis is confirmed by further examination of CSF wet mounts for motile trophozoites. However, failure to visualize the amoeba

does not exclude PAM, and the diagnosis is often missed when *Naegleria* organisms are mistaken for atypical mononucleocytes or lymphocytes in the CSF.

CT and MR imaging may be normal in early PAM, with subsequent evidence of brain edema and basilar meningeal enhancement. However, PAM imaging features are non-specific [10,11]. Recently, a triplex real-time TaqMan PCR assay was developed as a rapid laboratory diagnostic tool for simultaneous identification of *Acanthamoeba* spp., *B. mandriallaris*, and *N. fowleri* [7]. This approach may provide a relatively rapid means of detection to enhance identification of amoebae that are not easily distinguished by conventional cultivation and microscopic methods. PCR methodology for specific amplification of *N. fowleri* DNA can identify amoeba in CSF. This method is sufficiently sensitive to detect individual amoeba and is often employed as a confirmatory test for *N. fowleri* identification.

PAM is an acute disease, in which *N. fowleri* can grow to large numbers by feeding on bacteria. Thus, early diagnosis is essential in order to initiate appropriate antimicrobial therapy before the amoebae do extensive damage [1]. *N. fowleri* is highly sensitive to the antifungal drug amphotericin B; however, PAM survival rate is low and few patients survive [13]. In our case, amphotericin B was ineffective possibly due to 1) high infectious dose, 2) rapid onset of disease, 3) delay in diagnosis, or 4) patient's immune system may have been compromised. In our case, PAM developed within several days following exposure to contaminated water, and caused death on day 25 after beginning of the chemotherapy. Therefore, we propose that critical points in determining PAM survival case include early diagnosis and treatment initiation, the infectious dose of amoebae, the virulence of the infecting strain, and the health status of the patient.

This is the first PAM case that occurred in Taiwan following bathing in hot spring. Rapid diagnosis was made by microscopic examination to visualize motile amoebae, and the diagnosis was further confirmed by PCR and sequencing. In spite of amphotericin B treatment, the patient passed away on day 25 after beginning of the treatment. The presence of *N. fowleri* in hot spring water poses a threat to human health. Thus, the relationship between public hygiene and the quality of hot spring water is worthy of future investigations.

## REFERENCES

1. Schuster FL, Visvesvara GS. Free-living amoebae as opportunistic

- and non-opportunistic pathogens of humans and animals. *Int J Parasitol* 2004; 34: 1001-1027.
2. Visvesvara GS, Moura H, Schuster FL. Pathogenic and opportunistic free-living amoebae: *Acanthamoeba* spp., *Balamuthia mandrillaris*, *Naegleria fowleri*, and *Sappinia diploidea*. *FEMS Immunol Med Microbiol* 2007; 50: 1-26.
  3. da Rocha-Azevedo B, Tanowitz HB, Marciano-Cabral F. Diagnosis of infections caused by pathogenic free-living amoebae. *Interdiscip Perspect Infect Dis* 2009; 251406: 1-14.
  4. Heggie TW. Swimming with death: *Naegleria fowleri* infections in recreational waters. *Travel Med Infect Dis* 2010; 8: 201-206.
  5. Martinez AJ, Visvesvara GS. Free-living, amphizoic and opportunistic amebas. *Brain Pathol* 1997; 7: 583-598.
  6. Schild M, Gianinazzi C, Gottstein B, Müller N. PCR-based diagnosis of *Naegleria* sp. infection in formalin-fixed and paraffin-embedded brain sections. *J Clin Microbiol* 2007; 45: 564-567.
  7. Qvarnstrom Y, Visvesvara GS, Sriram R, da Silva AJ. Multiplex real-time PCR assay for simultaneous detection of *Acanthamoeba* spp., *Balamuthia mandrillaris*, and *Naegleria fowleri*. *J Clin Microbiol* 2006; 44: 3589-3595.
  8. de Jonckheere J, Voorde H. The distribution of *Naegleria fowleri* in man-made thermal waters. *Am J Trop Med Hyg* 1977; 26: 10-15.
  9. Tyndall RL, Ironside KS, Metler PL, Tan EL, Hazen TC, Fliermans CB. Effect of thermal additions on the density and distribution of thermophilic amoebae and pathogenic *Naegleria fowleri* in a newly created cooling lake. *Appl Environ Microbiol* 1989; 55: 722-732.
  10. Kidney DD, Kim SH. CNS infections with free-living amebas: neuroimaging findings. *AJR Am J Roentgenol* 1998; 171: 809-812.
  11. Schumacher DJ, Tien RD, Lane K. Neuroimaging findings in rare amebic infections of the central nervous system. *AJNR Am J Neuroradiol* 1995; 16: 930-935.
  12. Carter RF. Sensitivity to amphotericin B of a *Naegleria* sp. isolated from a case of primary amoebic meningoencephalitis. *J Clin Pathol* 1969; 22: 470-474.
  13. Vargas-Zepeda J, Gómez-Alcalá AV, Vásquez-Morales JA, Licea-Amaya L, De Jonckheere JF, Lares-Villa E. Successful treatment of *Naegleria fowleri* meningoencephalitis by using intravenous amphotericin B, fluconazole and rifampicin. *Arch Med Res* 2005; 36: 83-86.