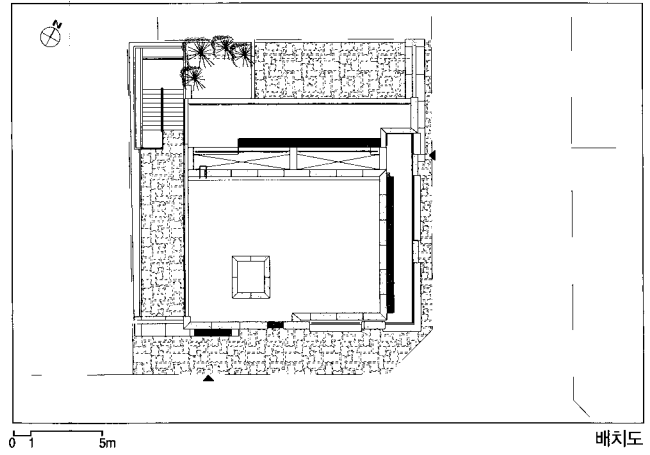


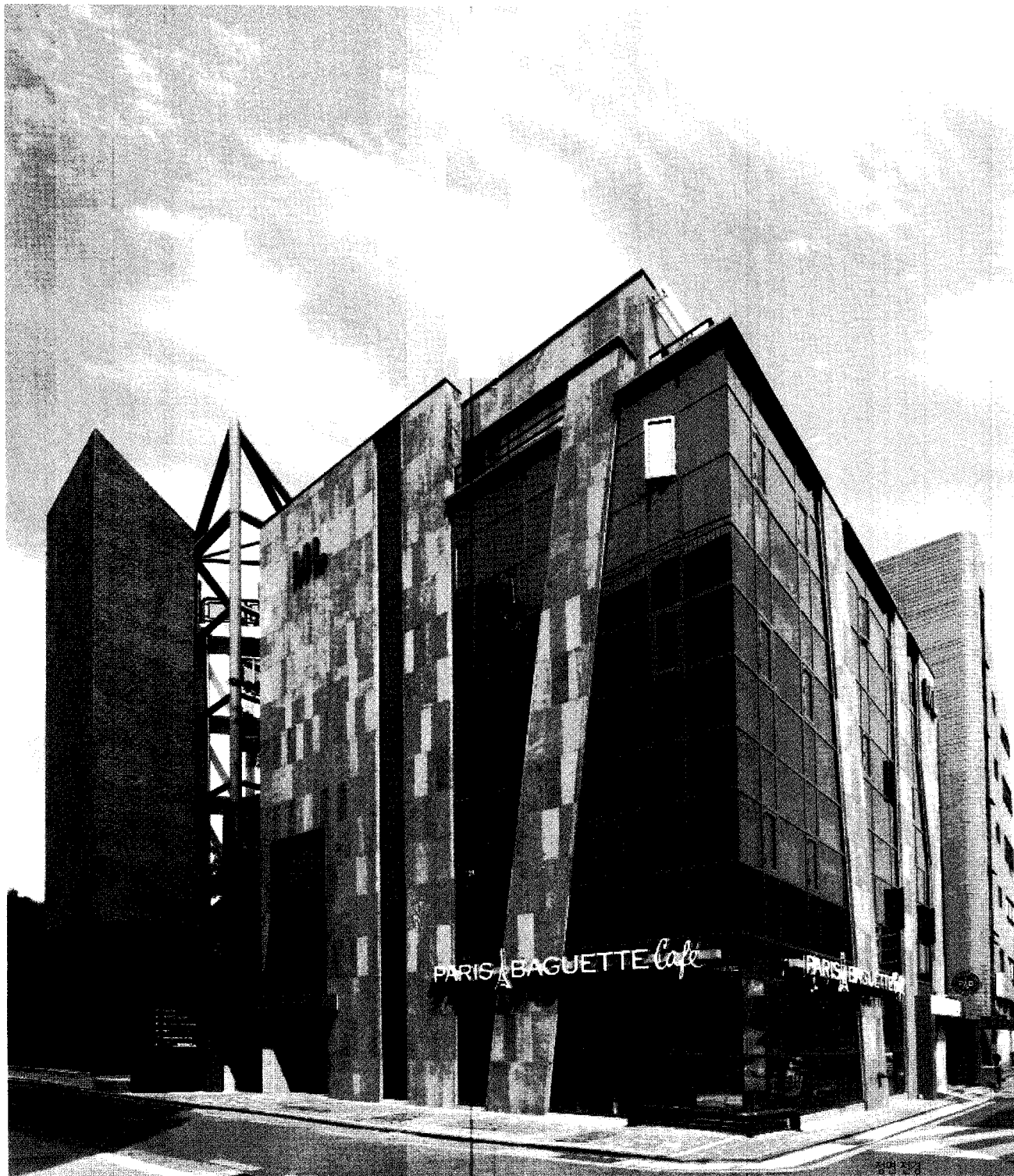
Secho-dong M.L Building

서초동 M.L 빌딩

Project team | not disclosed
 Client | Milips Trading Co., Ltd
 Location | Seoul Seocho-gu Seocho-dong 1343-5
 Site Area | 320.70m² Building Area | 163.68m²
 Gross Floor Area | 936.37m²
 Building to Land Ratio | 51.04%
 Floor Area Ratio | 223.22% Structure | R.C
 Structural Engineer | DSK Architects & Engineering Co., Ltd
 HVAC Engineer | Kun Yang Engineering
 Electrical Engineer | Kun Chang Engineering Consultants Co., Ltd
 General Contractor | not disclosed
 Building Scope | B1-5F
 Finishing Materials | T30 Jeju Stone / T150 AL Curtain Wall
 Photographer | not disclosed Cost | not disclosed



김영수 | 정혜원 (주)미르종합건축사사무소
 Architects — Kim, Young-soo, KIRA



대지의 조건이 8차선의 효령로에 면한 이면도로의 모퉁이에 위치하고 있으며 주변이 오래된 중, 소규모의 사무실과 주거지로 밀집된 지역으로써 도자기 작가의 작업실 및 음식점 용도로 사용되고 있었고, 오래전 증축의 영향으로 무질서한 내부공간과 콘크리트 옹벽에 창이 없는 구조로 이루어진 기존 건물의 외부형태는 다소 답답함과 음습한 느낌으로 대지가 갖고있는 특성을 잘 살리지 못하고 있었다.

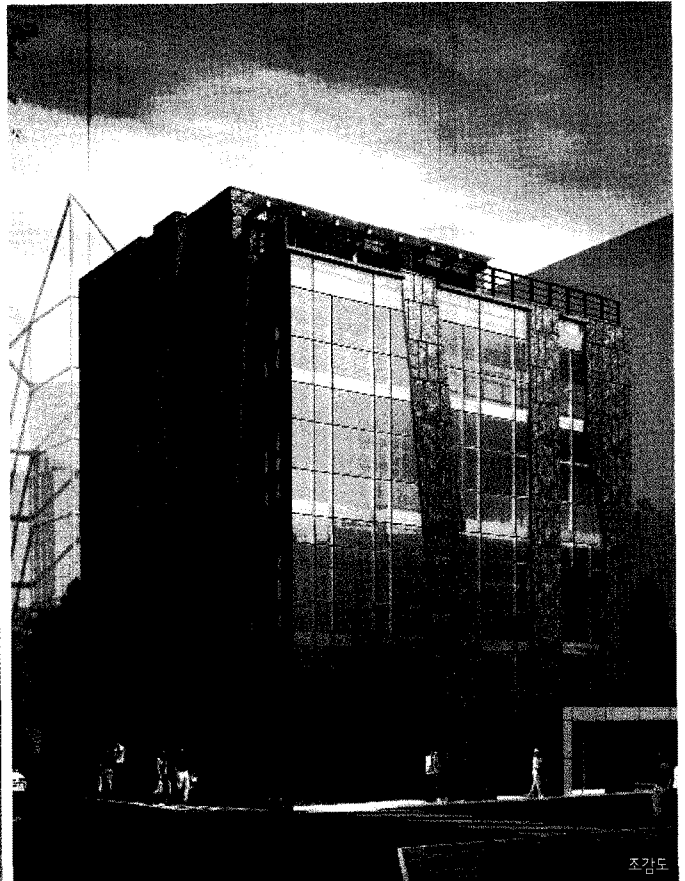
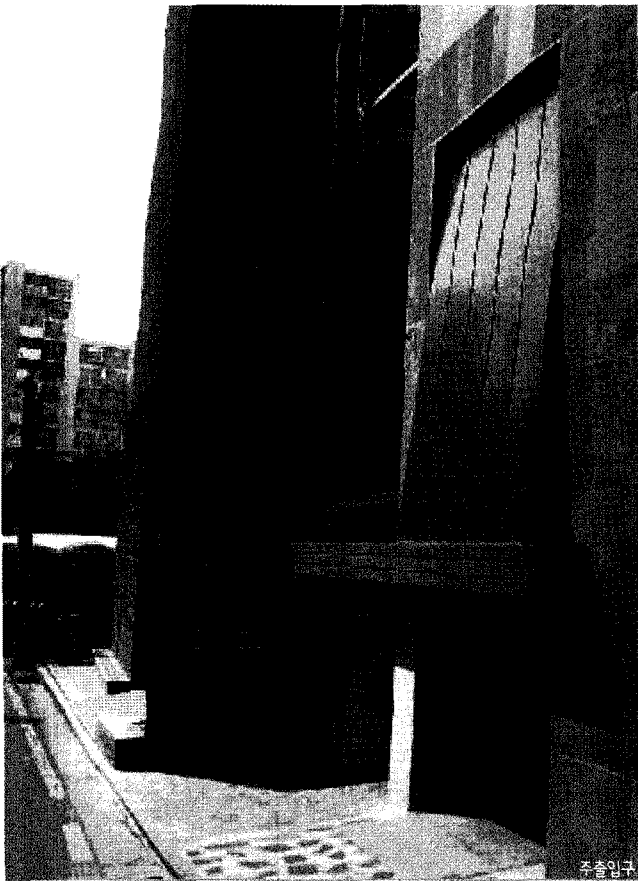
이러한 부정적이고 폐쇄적인 요소들을 해결하기 위한 방안으로 첫째, 도로 쪽에 면해있는 콘크리트옹벽을 최소한의 벽면을 남기고 과감하게 철거한 후, 제주돌과 알루미늄 커튼월을 사용하여 폐쇄적 공간을 개방적 공간으로 변화를 주고 동시에 커튼월의 단점인 수직과 수평적 단조로움을 피하기 위해 외벽을 경사형태로 디자인하여 내부 사용자와 외부의 통행자 및 관람자들에게 우리의 옛 돌담에서 느낄 수 있는 편안함을 느낄 수 있도록 하였다.

둘째, 주출입구의 형태는 일반적인 개념의 캐노피를 지양하고 2층에서부터 시작되는 경사형태로 철판위에 볼수지오장으로 처리하여 새로운 입면과 조화를 이루도록 하였다.

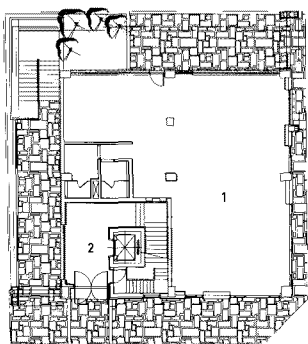
셋째, 내부공간의 불규칙하게 구성된 설비공간을 한곳으로 집중, 배치하여 각종의 내부공간을 극대화 하였다.

The Land is located at the corner on the second road from Hyo-Ryung Main Road with eight-lane, as region surrounded with offices of small and Medium Size and residential districts. Before remodeling this Building, it was used as Restaurants and Workplace of ceramist, was too old building, consisted in disordered inter-space and concrete wall without any Windows, the exterior of building had very oppressive atmosphere, was not made the most of characteristics as this location

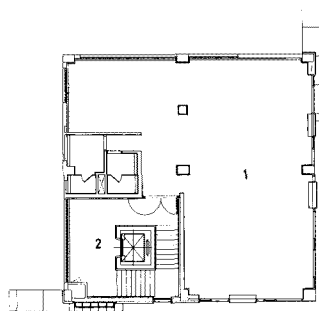
We had an eye to followings, to improve such negatives and closures for this Building
 1. Change to Open Space and comfortable.
 After dismantling Concrete wall without Window, we layed out remaining minimum wall, to avoid monotonous of Vertical and Horizontal from, designed as inclined from with granite of Jeju Stone and AL Curtain Wall, and so as for Users and Lookers have comfortable like as feeling from our traditional stone wall.
 2. Renewed concept and Harmony.
 We designed main entrance and Exit by inclined steels coated with Fluorine resin painting from the Second Floor, it is as to Sublate general Canopy concept, will make renewed concept and Harmony in the sense of Sight.
 3. Maximized inter-Space
 We layed out maximzed inter-Space, to do so, made Scattered and irregular HVAC spaces centralized displayed to one place. ■



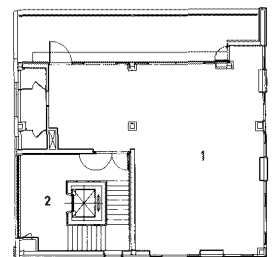
01_ 근린생활시설
 02_ ELVE 홀



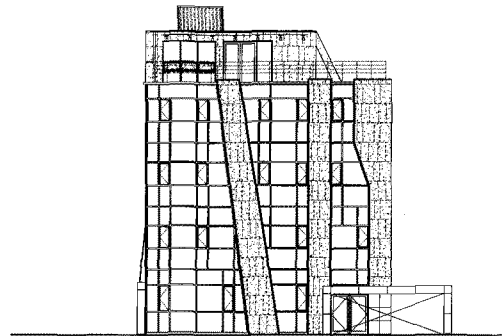
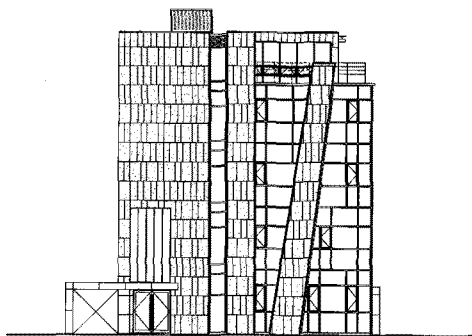
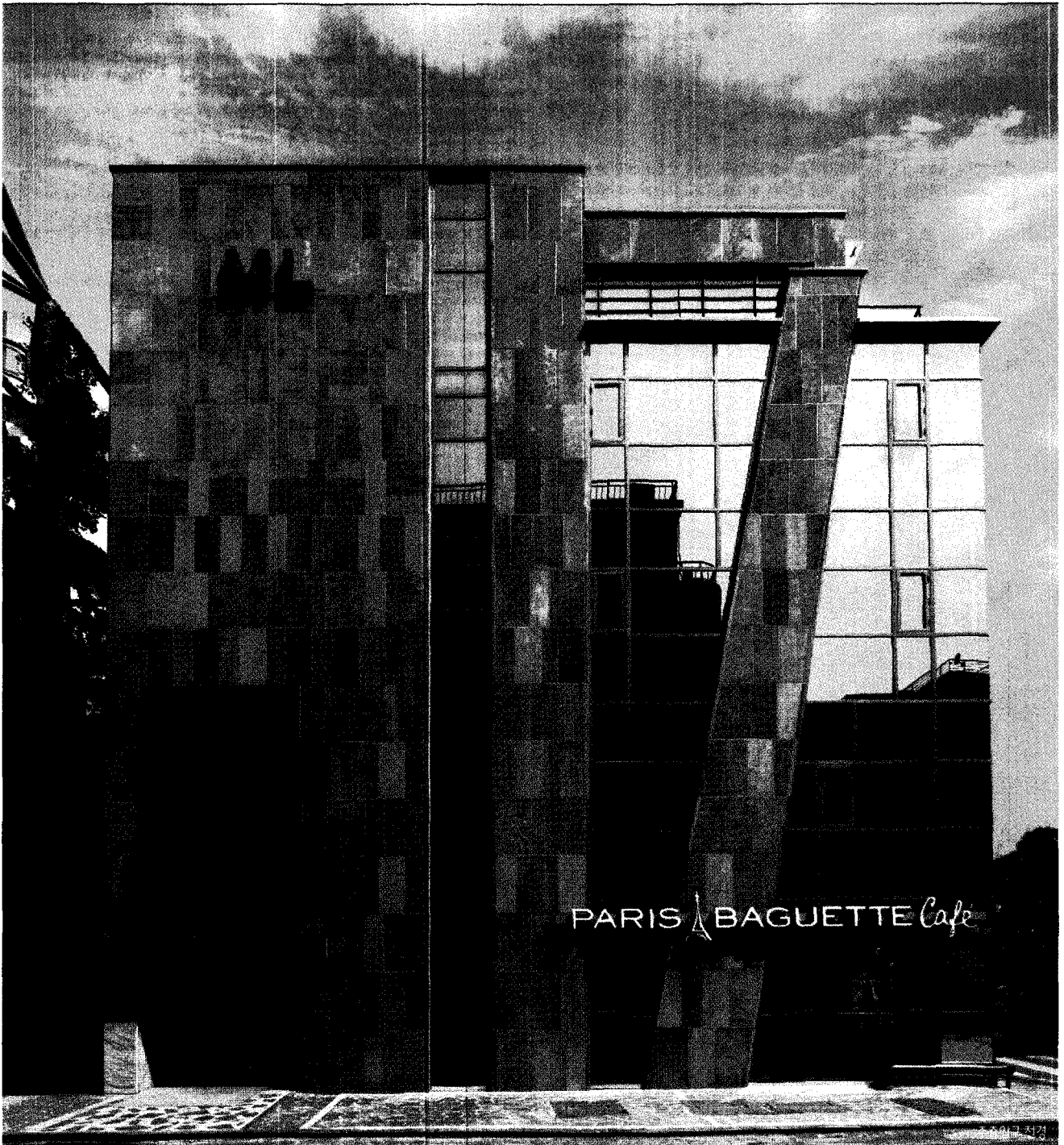
0 1 5m 1층 평면도



2층 평면도



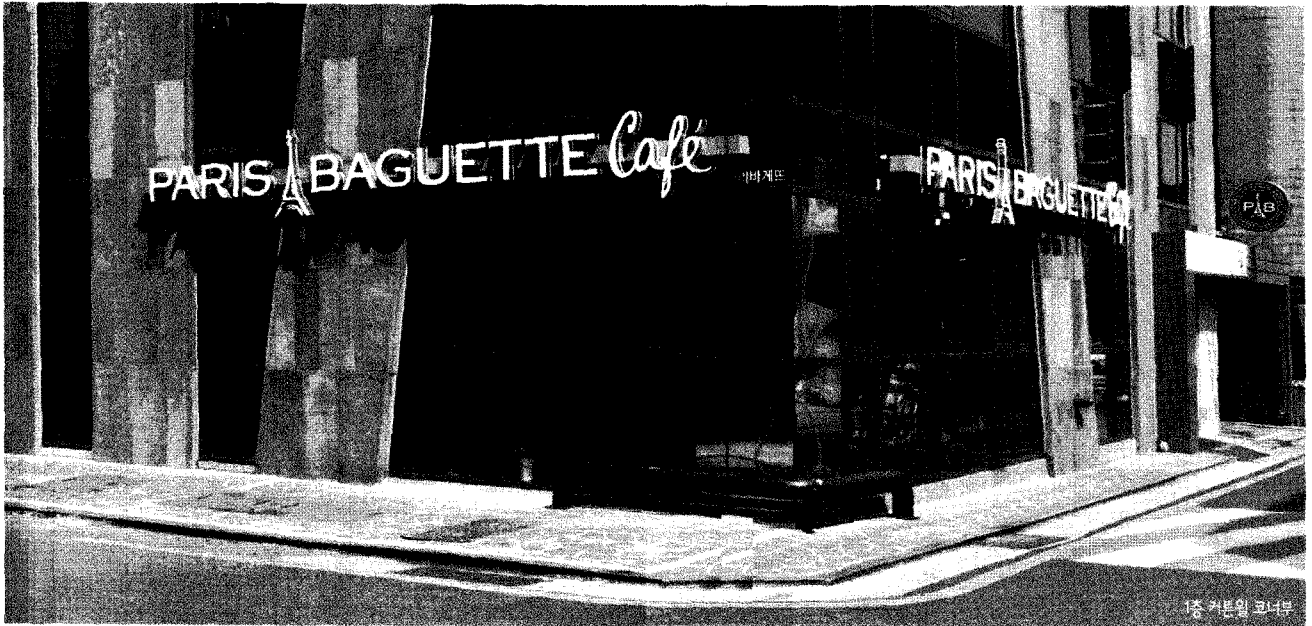
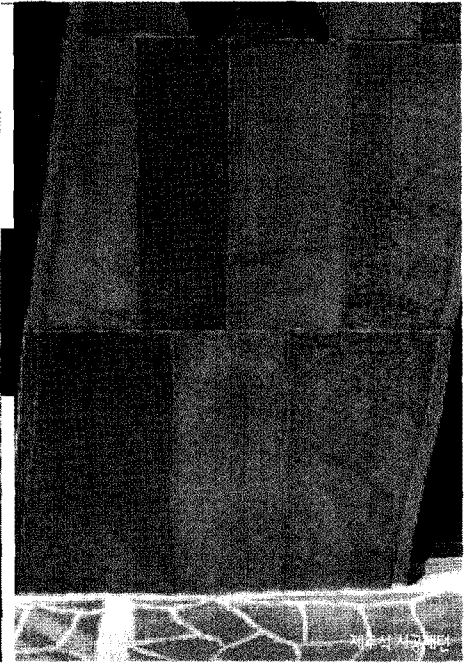
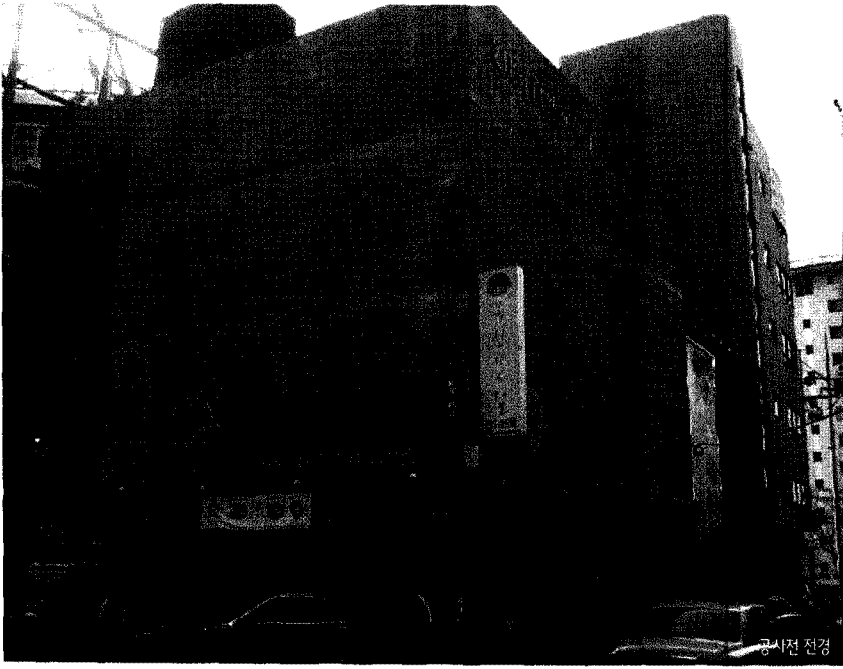
4층 평면도



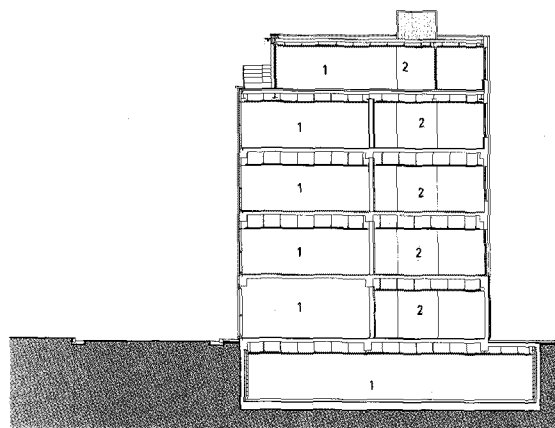
0 1 3m

남측면도

동측면도

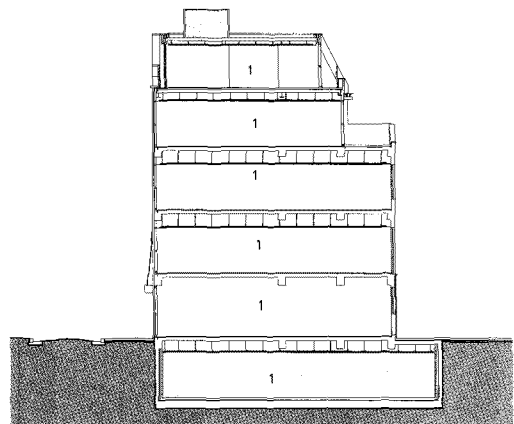


01_ 근린생활시설
02_ ELEV.중



0 1 5m

중단면도



횡단면도