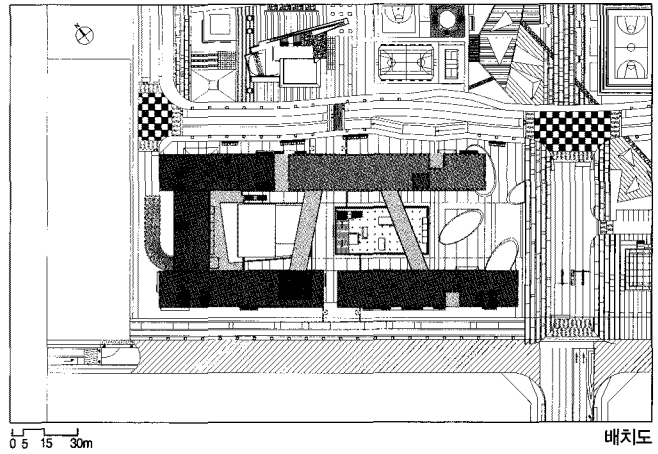
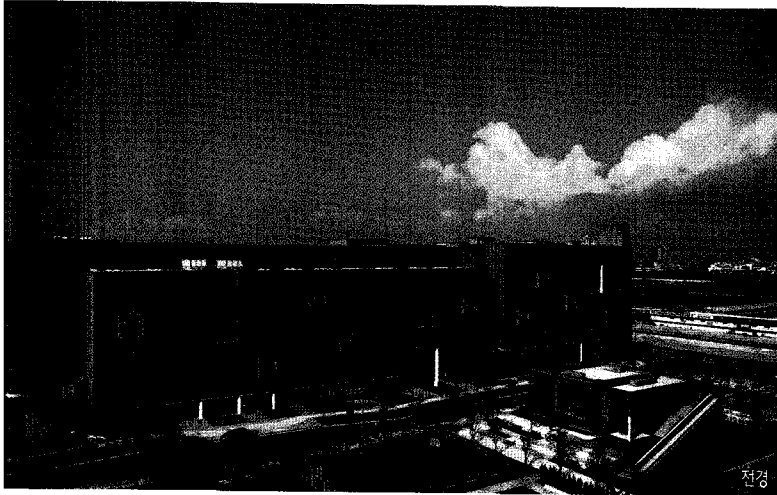


연세대학교 국제캠퍼스 제1기숙사  
YONSEI International Campus Residence Hall #1

Project team | Huh, Sung-wook·Lee, Jung-it·Yang, Seung-tae·Lee, In-sim·Choi, Eun-young·Jung, Ju-yeon  
 Client | Songdo Global Complex Development Co. Ltd (SGCD)  
 Location | Incheon Yeonsu-gu Songdo-dong 162-1  
 Site Area | 614,654.9m<sup>2</sup> Building Area | 7,525.32m<sup>2</sup>  
 Gross Floor Area | 57,771.63m<sup>2</sup>  
 Structure | R.C  
 Structural Engineer | MOA, Sung Yeong Oh  
 HVAC Engineer | Hankook Consulting Structural Engineers  
 General Contractor | Hyundai Engineering & Construction (Hyundai E&C)  
 Building Scope | B1, 10F  
 Finishing Materials | THK 24 Double Glazing Panels, Ceramic Bricks, THK30 Flamed Granite Stones, THK 3.0 Aluminum Sheets  
 Photographer | Park, Young-chaee Cost | not disclosed



이근홍 · 이관표 · 이민 — 정현원(주)공간트레이징건축사사무소  
 Architects — Yi, Kun-chang·Yi, Kwan-pyo·Lee, Min, KIRA



연세대학교 송도 캠퍼스는 입지적 특성과 시대적 상황에 맞추어 Residential College로 기획되었다. Residential College의 개념은 대학생활의 목표를 학습에만 두지 않고 기숙사에 학생과 교수가 함께 거주하며 멘토링을 통해 생활지도까지 하는 전인교육 시스템을 말한다. 과거 우리의 성균관과 서원에서도 시행되었던 제도인데, 타의에 의한 근대화로 과거와 단절된 우리에게서 생소한 개념이 되고 말았다.

수차례에 걸친 해외 대학 답사와 실제 경험자들의 체험을 통한 간접경험을 토대로 Residential College의 핵심시설인 기숙사의 하드웨어와 소프트웨어를 만들 수 있었다.

5층의 저층형 기숙사로 실시설계가 완료되고 파일 공사를 마무리할 쯤 기숙사 수용인원을 1,000명에서 2,000명으로, 2배 늘려달라는 설계변경 요구가 있었다.

새로운 안을 만들어 내는 것도 어려운 일이지만 기존 설계안의 큰 틀을 유지하며 변경된 프로그램 수용한다는 것은 더욱 어려운 일이라는 것을 새삼 깨달았다.

2배 인원을 수용하기 위해 커지고 높아진 매스의 중압감을 완화시키기 위해 매스를 분절하고 서로를 관입시켰고 층수도 변화감 있게 구성했다. 솔리드와 보이드의 대비와 매스 돌출을 통해 적벽돌 건물의 단조로움을 극복하고 현대적 감각을 심으려 했다.

중정 부분 지하와 1층 사이에 위치한 식당은 기둥이 없는 대공간으로 만들고 지하층과 1층 연결 부분을 객석형태로 처리해 식사뿐만 아니라 공연과 모임 등 다양한 활동이 이루어질 수 있도록 하였다. 매립지 송도의 단조로운 지형에 변화를 주고 심어 식당의 상부는 입체적으로 처리해 레벨 변화 있는 인공지형을 만들었다.

또한 각 동을 연결하는 2개의 브릿지는 동간 연결 기능뿐만 아니라 세미나룸이나 클럽룸 등의 공용시설이 배치돼 학생들 간의 교류가 이루어지는 곳이고 브릿지의 Mass는 중정의 장소성과 공간감을 강화시키는데 일조할 수 있도록 했다.

중정 중심에 위치한 선문은 지하 부대시설에 자연채광과 환기를 제공할뿐더러 새롭게 구성되는 지형을 더욱 입체적으로 만들어 주는 역할을 하도록 했다.

원공까지 어려움이 여러 번 있었지만 포기하지 않고 주장해 세워진 이곳이 학생들이 대학생활을 즐겁고 건강하게 보낼 수 있는데 도움이 되길 바란다.

Based on the feature of its location and the situation of the time, Yonsei University, Songdo Campus has been planned as a Residential College. The concept of a Residential College focuses its goal of college life on a mentoring system between the professor and the students where guidance counseling is part of the educational system. This system was implemented in the past on our Sung Kyun Kwan, but due to unexpected modernization which has detached us from the past, this concept has become unfamiliar to us.

With the numerous research and investigation of colleges overseas and the experiences of the associated people, we were able to create the hardware and software for the dormitory which is the core of the Residential College.

When the five story low-rise dormitory building's execution drawing was finished and the piling was about to be completed, a change in design was requested so that the number of persons to be accommodated would increase from 1,000 to 2,000.


To plan out a new design was hard, but we realized that maintaining the main outline while accepting the changed program was even more difficult.

To ease the oppression of the expanded size of mass due to the increase of amount of accommodated people, the mass was segmented and each part was interpenetrated. The number of stories was also constructed considerably. By using the contrast of solids and voids along with the projected masses, the monotonous feeling of the red-bricked building was overcome, and a modern feeling was applied.

The cafeteria located in the courtyard between the basement and the first floor was planned as a large area without columns, and this area was arranged into an auditorium form so that it would not only be a place for dining, but could also be used as a place for performances of various activities. Change was sought to be applied to the reclaimed grounds of Songdo, thus the upper area of the cafeteria was made into a solid artificial topography.

Also, the two bridges connecting each of the complexes hold a public area which may be used as a seminar room or an extracurricular activity area. This area may be used by the students to interchange with each other, and the mass of the bridge will reinforce the space impression and the location of the courtyard.

The sunken which is located in the center of the courtyard will not only provide the subsidiary facilities with natural lighting and ventilation but will also make the newly constructed area more solid.

Although many hardships were faced on the way to completion, this project, which was built on determination and insistence, will hopefully become of assistance to the enjoyable and sound college life of the students who attend Yonsei University, Songdo Campus. 

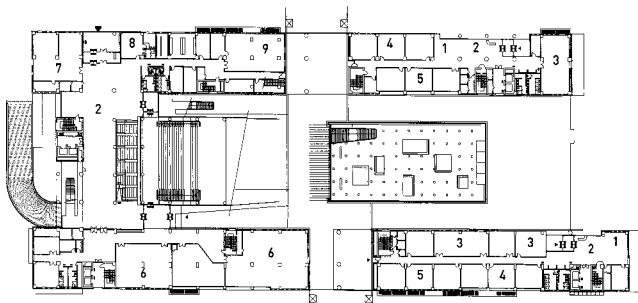
복층전경



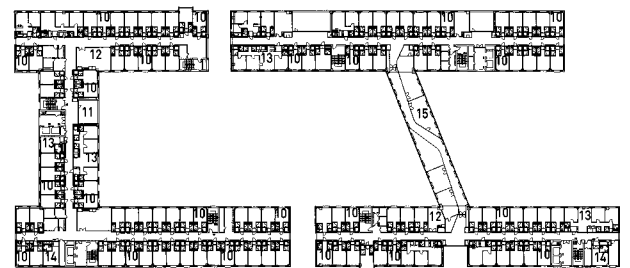


중정

- |         |             |           |             |
|---------|-------------|-----------|-------------|
| 01_라운지  | 05_취미실      | 09_행정/관리  | 13_6인실      |
| 02_로비   | 06_열람실      | 10_2인실    | 14_장애우 기숙사실 |
| 03_세미나룸 | 07_멀티미디어실   | 11_휴게 발코니 | 15_스터디룸     |
| 04_클럽룸  | 08_강의/관리사무실 | 12_커뮤니티룸  |             |



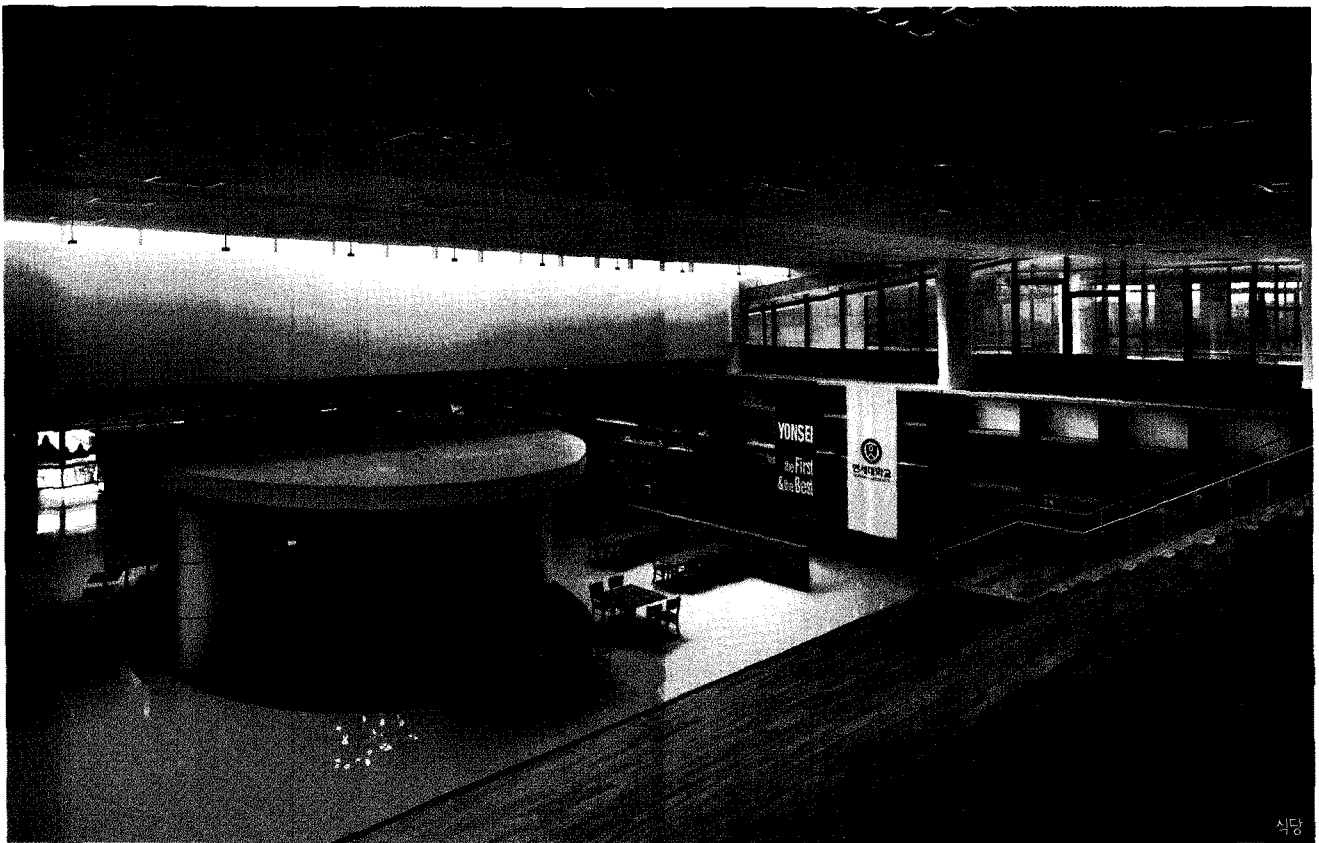
1층 평면도



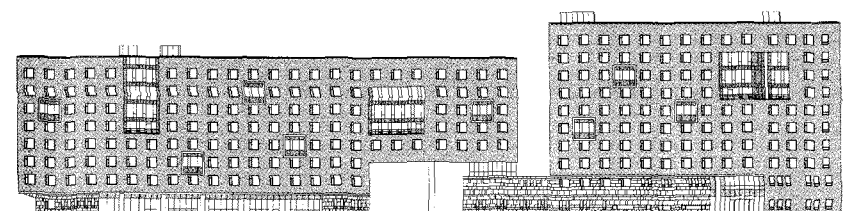
5층 평면도



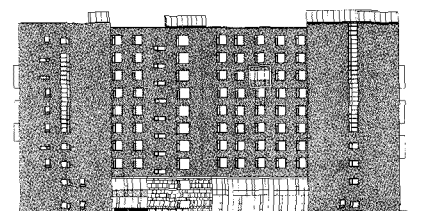
진입부 전경



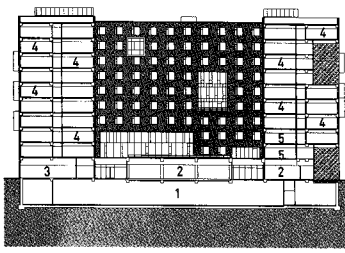
식당



정면도



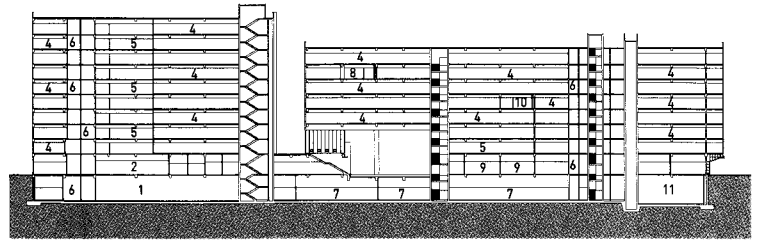
좌측면도



0 5 15 30m

중단면도

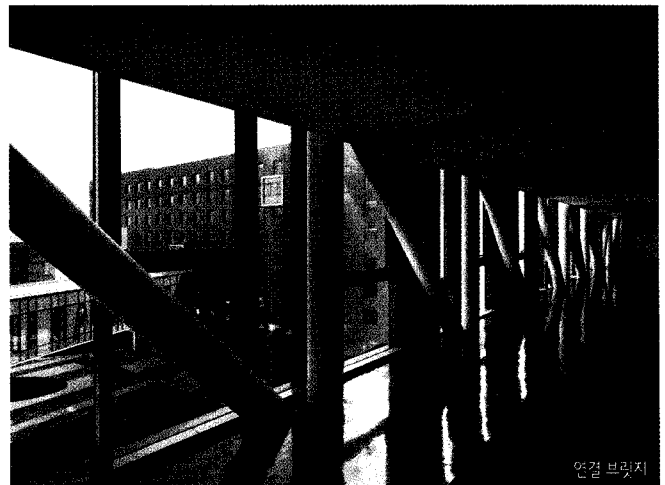
- 01\_ 주차장
- 02\_ 로비
- 03\_ 열람실
- 04\_ 기숙실
- 05\_ 커뮤니티룸
- 06\_ TPS, EPS, PS
- 07\_ 편의시설
- 08\_ 세미나실
- 09\_ 취미실
- 10\_ 클럽룸
- 11\_ 기계실



횡단면도



신큰기둥



연결 브릿지



층 라운지