

Detection of Extracellular Enzyme Activities in *Ganoderma neo-japonicum*

Woo-Sik Jo^{1*}, Ha-Na Park¹, Doo-Hyun Cho¹, Young-Bok Yoo² and Seung-Chun Park³

¹Department of Agricultural Environment, Gyeongbuk Agricultural Technology Administration, Daegu 702-320, Korea

²Mushroom Research Division, Department of Herbal Crop Research, National Institute of Horticultural & Herbal Science, Rural Development Administration, Suwon 404-707, Korea

³College of Veterinary Medicine, Kyungpook National University, Daegu 702-701, Korea

(Received December 16, 2010. Accepted May 13, 2011)

The ability of *Ganoderma* to produce extracellular enzymes, including β -glucosidase, cellulase, avicelase, pectinase, xylanase, protease, amylase, and ligninase was tested in chromogenic media. β -glucosidase showed the highest activity, among the eight tested enzymes. In particular, *Ganoderma neo-japonicum* showed significantly stronger activity for β -glucosidase than that of the other enzymes. Two *Ganoderma lucidum* isolates showed moderate activity for avicelase; however, *Ganoderma neo-japonicum* showed the strongest activity. Moderate ligninase activity was only observed in *Ganoderma neo-japonicum*. In contrast, pectinase, amylase, protease, and cellulase were not present in *Ganoderma*. The results show that the degree of activity of the tested enzymes varied depending on the *Ganoderma* species tested.

KEYWORDS : Chromogenic media, Extracellular enzymes, *Ganoderma neo-japonicum*

Numerous studies have isolated and purified high-quality enzymes from fungi [1]. Mushrooms, like all other fungi, lack chlorophyll and are nongreen organisms. Thus, they cannot convert solar energy by photosynthesis to organic matter as in green plants, but they do produce an extensive array of enzymes that degrade lignocellulosic materials for growth and fruiting [2]. The genus *Ganoderma* is a fungi famous as a tonic in traditional Asian medicines because of its characteristics and biological activities and is also a very important genus economically [3]. *Ganoderma* species grow on wood and are classified as wood-decaying fungi. Wood-decaying fungi degrade cellulose, hemicellulose, and lignin, the wood cell wall substrate, by secreting cellulase, hemicellulase, and ligninase [4, 5].

Hong *et al.* [6] extracted a cellulase from *Pleurotus sajor-caju*, and Hashimoto [7] isolated a carboxymethyl cellulase from *Pholiota nameko*. Ro [8] and Min *et al.* [9] produced and purified a protease from *Fomes fomentarius* (Fr.) Kicky and *Pleurotus cornucopiae*, respectively. Additionally, laccase was produced from *Flammulina velutipes* by Lee and Suh [10]. These results suggest that *Ganoderma* may have a variety of extracellular enzymes such as cellulases, ligninases, and proteases. However, little information on the activity of extracellular enzymes in *Ganoderma* has been reported. Therefore, we chose *Ganoderma neo-japonicum* and *Ganoderma lucidum* to test for enzyme activity. We used a method based on a dye coupled to a

polysaccharide to detect the extracellular enzymes secreted from the fungi [11, 12].

Three *Ganoderma* species were prepared from the Korean Agricultural Culture Collection (Suwon, Korea) and from our laboratory. All cultures were precultured on potato dextrose agar (Difco, Franklin Lakes, NJ, USA) at 25°C for 5 days, and the precultures were transferred to chromogenic media [13]. A 0.1% yeast nitrogen base (Difco) as a nitrogen source and 1.5% agar powder were used as the basic media substrate. Congo Red (0.5%; Sigma, St. Louis, MO, USA) was used as the chromogenic dye, media pH was adjusted to 7.0, and the incubation temperature was controlled at 25°C. One of the following substrates was included as a carbon source in the basic media: 0.5% CM-cellulose (Sigma) for CM-cellulase, Avicel (Fluka, Arklow, Ireland) for avicelase, D-cellobiose (Sigma) for β -glucosidase, xylan from birchwood (Sigma) for xylanase, polygalacturonic acid (MP Biomedical, Vannes, France) for pectinase, lignin (Sigma) for ligninase, starch from potato (Duchefa, Haarlem, The Netherlands) for amylase, and skim milk (Fluka) for protease. To correctly identify extracellular enzyme activity, the cellulolytic fungi *Trichoderma* was used as a positive control, and *Saccharomyces* was used as a negative control.

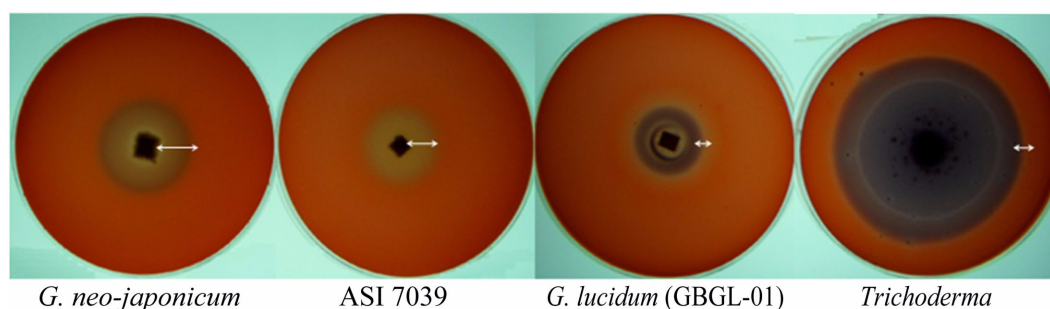
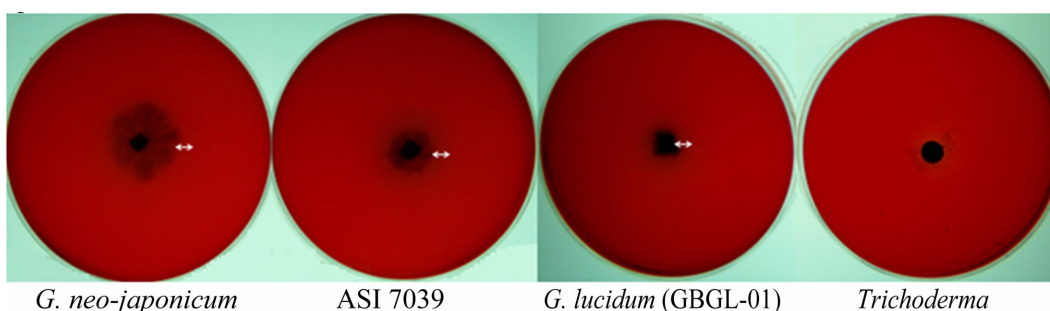
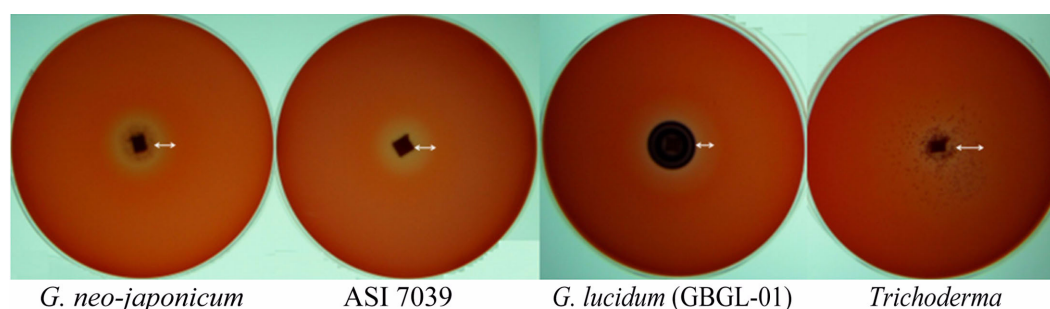
After a 5 day incubation at 25°C, the activity of each enzyme was estimated by observing the clear zone formed around the fungal colony resulting from the reaction between

*Corresponding author <E-mail : jws67@korea.kr>

Table 1. Detection of extracellular enzyme activities in *Ganoderma* species using the chromogenic reaction

Species	β -glucosidase	Cellulase	Avicelase	Pectinase	Xylanase	Protease	Amylase	Ligninase
<i>G. neo-japonicum</i> (GBGN-01)	S	W	S	W	M	W	W	M
<i>G. lucidum</i> (ASI 7039)	M	M	M	W	W	W	W	W
<i>G. lucidum</i> (GBGL-01)	M	W	M	W	W	W	W	W
<i>Saccharomyces</i>	N	N	N	N	N	N	N	N
<i>Trichoderma</i>	S	S	S	S	S	S	W	W

S, strong activity group (1.0~1.5 cm); W, weak activity group (0.1~0.5 cm); M, moderate activity group (0.5~1.0 cm); N, no activity group (<0.1 cm).

**Fig. 1.** Examples of β -glucosidase activity on chromogenic media by different *Ganoderma* species. Bars indicate clear zones.**Fig. 2.** Examples of ligninase activity formed on chromogenic media by different *Ganoderma* species. Bars indicates clear zones.**Fig. 3.** Examples of avicelase activity formed on chromogenic media by different *Ganoderma* species. Bars indicates clear zone.

the enzymes secreted by the fungi and the chromogenic substrates. The clear zone was measured from the end of the fungal colony to the end of the color change zone and was divided into the following four groups: no activity group (N, 0~0.1 cm), weak activity group (W, 0.1~0.5 cm), moderate activity group (M, 0.5~1.0 cm), and a strong activity group (S, 1.0~1.5 cm). These tests were repeated three times.

The results of the extracellular enzyme activity testing for *G. neo-japonicum* and *G. lucidum* are shown in Table 1. Among the eight tested enzymes, β -glucosidase had more activity than that of the other enzymes. In particular, *G. neo-japonicum* showed significantly strong activity. Fig. 1 shows several examples of β -glucosidase detection on chromogenic media. Only *G. neo-japonicum* showed activity in the lignase assay (Fig. 2). Strong activity for avicelase

lase was only observed in *G. neo-japonicum*, whereas the other species showed moderate activity (Fig. 3). In contrast, pectinase, amylase, and cellulose tended to show weak activity. *G. neo-japonicum* had moderate xylanase activity, and *G. lucidum* ASI 7039 showed moderate cellulase activity.

When we compared the *Ganoderma* species for β -glucosidase and avicelase activity, only *G. neo-japonicum* had strong β -glucosidase activity and a strong ability to produce avicelase. However, the *Ganoderma* species showed moderate activity. In conclusion, we tested *G. neo-japonicum* and two *G. lucidum* isolates for eight extracellular enzyme activities using chromogenic media. There appeared to be differences in the production of these enzymes among the tested *Ganoderma* species. In most cases, they showed high activity for enzymes related to degrading cellulose such as β -glucosidase and avicelase. Studies of the biological, chemical, pharmacological, and clinical applications of *Ganoderma* have been extensively reported, but there is limited information on industrial applications such as the use of extracellular enzyme activity. Thus, these data will be useful to apply high-quality enzymes derived from an edible mushroom such as *G. neo-japonicum* to industries, including food processing, brewery, biofuels, and bioremediation.

Acknowledgements

This study was supported by a National Joint Agricultural Research Project of the RDA (Project No. 20100301-302-093-001-06-00), Republic of Korea.

References

1. Park WH, Kim TH, Ro IH. Studies on enzymes of the higher fungi of Korea (II): identification of cellulolytic enzyme in *Lenzites betulina*. Kor J Mycol 1986;14:225-9.
2. Chang ST, Buswell JA. Mushroom nutraceuticals. World J Microb Biotechnol 1996;12:473-6.
3. Ying J, Mao X, Ma Q, Zong Y, Wen H. Icones of medicinal fungi from China. Beijing: Science Press; 1987.
4. Abraham L, Hoffman B, Gao Y, Breuil C. Action of *Ophiostoma piceae* proteinase and lipase on wood nutrients. Can J Microbiol 1998;44:698-701.
5. Shin DS, Lee HH, Lim KP, Cho NS, Cho BM. Chemistry of forest product. Seoul: Haeng Mun Sa; 1991. p. 121-2.
6. Hong JS, Uhm TB, Jung GT, Lee KB. Studies on the enzymes produced by *Pleurotus sojor-caju* (1): the production of cellulolytic enzymes. Kor J Mycol 1984;12:59-64.
7. Hashimoto K. Biochemical studies on the mushroom. Toyo Shokuhin Kenkyusho Kenkyu Hokokusho 1972;10:163.
8. Ro IH. Studies on protease activity of *Fomes fermentarius* (Fr.) Kicky. Theses Collect Sookmyoung Univ Sci 1984;25:475-85.
9. Min TJ, Lee SY, Kim JW. Purification and properties of protease from the *Pleurotus cornucopiae* (Per.) Rolland (2). Korean Biochem J 1985;18:142-6.
10. Lee JS, Suh DS. Production and enzymatic properties of laccase from *Flammulina velutipes*. Kor J Mycol 1985;13:111-4.
11. Castro GR, Ferrero MA, Méndez BS, Sineriz F. Screening and selection of bacteria with high amylolytic activity. Acta Biotechnol 1993;13:197-201.
12. Hejgaard J, Gibbons GC. Screening for α -amylase in cereals: improved gel-diffusion assay using a dye-labelled starch substrate. Carlsberg Res Commun 1979;44:21-5.
13. Jo WS, Bae SH, Cho DH, Park SD, Yoo YB, Park SC. Optimal medium conditions for the detection of cellulolytic activity in *Ganoderma lucidum*. Mycobiology 2009;37:313-6.