

Two New Records of the Lichen Genus *Placynthiella* Elenkin in South Korea

Yogesh Joshi¹, Thi Thuy Nguyen¹, László Lőkös², Young Jin Koh¹ and Jae-Seoun Hur^{1*}

¹Korean Lichen Research Institute, Suncheon National University, Suncheon 540-742, Korea

²Department of Botany, Hungarian Natural History Museum, Budapest 222, Hungary

(Received September 28, 2010. Accepted October 21, 2010)

This study describes two new records of the lichen genus *Placynthiella* (*P. hyporhoda* and *P. icmalea*) from South Korea. A brief taxonomic description and comments are provided for the new records. An artificial key is also provided for known species of this genus in South Korea.

KEYWORDS: Biodiversity, New records, Taxonomy, Trapeliaceae

The lichen genus *Placynthiella*, with seven species worldwide, belongs to the family Trapeliaceae [1]. The genus is characterized by crustose, effuse, granular-verrucose or isidiate-granular, brownish to blackish thallus; biatorine to lecideine, red-brown to black apothecia; pseudoparenchymatous exciple; dark brown epihymenium; colorless to pale brown hymenium; brown hypothecium; *Trapelia*-type asci with 8 ascospores that are simple (rarely 1-septate), hyaline, ellipsoid; simple to abundantly branched paraphyses with dark brown to red-brown apically swollen tips.

A single species of this genus [*P. uliginosa* (Schrad.) Coppins & P. James] has been reported from South Korea [2]. After examining the herbarium material housed at the Korean Lichen Research Institute (KoLRI), we found two additional taxa belonging to this genus: *P. hyporhoda* (Th. Fr.) Coppins & P. James and *P. icmalea* (Ach.) Coppins & P. James. A brief taxonomic description along with the chemistry, ecological data, and illustrations are provided. A key to all known taxa of *Placynthiella* in South Korea is also provided.

Specimens were examined using standard microscopical techniques and were hand-sectioned under a Nikon C-PS 1068908 dissecting microscope (Nikon, Tokyo, Japan). All measurements were performed on material mounted in water, and lactophenol cotton blue was used only as a stain. Anatomical descriptions based on these preparations were made under a Nikon Eclipse E 200 compound microscope. Measurements of thallus layers, apothecia, and ascospores were made at $\times 400$ and $\times 1,000$ magnifications. Spot test reactions were performed on hand sections of thalli and apothecia under a microscope (BX 50; Olympus, Tokyo, Japan). Secondary metabolites were identified by standard thin layer chromatography, as described by Orange *et al.* [3] using solvent system C.

Taxonomic Treatment of the Species

***Placynthiella hyporhoda* (Th. Fr.) Coppins & P. James (Fig. 1A)**

Lichenologist 16: 244 (1984).

Diagnostic characters. *Thallus* terricolous, compact to verruculose, of irregular granules that coalesce to form a continuous to \pm areolate crust, subgelatinous, dark brown. Apothecia usually abundant, often coalescing, rounded to slightly deformed, sessile or immersed among verrucules, 0.2–0.3 (~0.4) mm in diameter, disc blackish (even when moist), flat to weakly convex, margin soon excluded. Epiphytenium brown. Hymenium pale to dark brown. Hypothecium dark brown. Asci 8-spored, ascospores hyaline, ellipsoid, simple, $9.5\text{--}12 \times 4\text{--}5 \mu\text{m}$.

Chemistry. Spot tests: thallus K⁻, C⁻, KC⁻, Pd⁻. Hymenium I⁺ reddish-orange. Hypothecium K⁺ purple-violet. Secondary metabolites: none detected.

Ecology. This species was found growing on acidic soil at an elevation of 550 m.

Geographical distribution. Europe, Scandinavia, North America [4, 5].

Remarks. This species is characterized by a C⁻, subgelatinous, non-coralloid, granular thallus; numerous dark black apothecia and a deep brown-red hypothecium that reacts K⁺ purple-violet. *Placynthiella icmalea* and *P. uliginosa*, the other known *Placynthiella* species from South Korea, should not be confused with *P. hyporhoda*. The K⁺ reddish-brown reaction of the hypothecium in case of *P. uliginosa* separates it from *P. hyporhoda*, whereas presence of isidioid granules, C⁺ red reaction of the thallus, and secondary metabolites in *P. icmalea* separates it from

*Corresponding author <E-mail : jphong20@rda.go.kr>

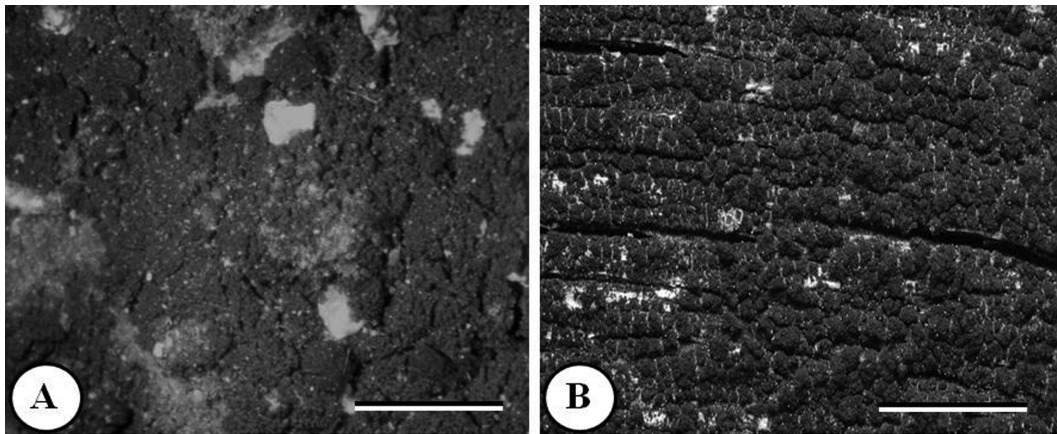


Fig. 1. Habits of *Placynthiella hyporhoda* (Th. Fr.) Coppins & P. James (scale bar = 1.5 mm) (A) and *Placynthiella icmalea* (Ach.) Coppins & P. James (scale bar = 1 mm) (B).

P. hyporhoda.

Specimen examined. South Korea, Jeollanam Prov., Jangheung Co., Gwansan-eup, Mt. Cheongwan, 34°32'09.1" N, 126°55'32.3" E, alt. 550 m, on soil, October 6, 2005, L. Lökös, 050652 (BP, KoLRI).

***Placynthiella icmalea* (Ach.) Coppins & P. James (Fig. 1B)**

Lichenologist 16: 244 (1984).

Diagnostic characters. *Thallus* corticolous, continuous, effuse, composed of isidiate to minutely coralloid-elongated granules, greenish- or blackish-brown. Apothecia common, scattered, rarely crowded and confluent, sessile or immersed among granules, 0.2–0.3 (~0.4) mm in diameter, disc brownish-black (even when moist), flat, margin paler than the disc, thin. Epithemium brown. Hymenium pale brown. Hypothecium pale brown. Asci 8-spored, ascospores hyaline, ellipsoid, simple, 8–12 × 4–5 μm.

Chemistry. Spot tests: thallus K–, C+ red, KC+ red, Pd–. Hymenium I+ reddish-orange. Hypothecium K–. Secondary metabolites: gyrophoric acid.

Ecology. This species was found growing between elevations of 115 to 970 m on *Zelkova* bark and dead wood.

Geographical distribution. Antarctica, Europe, Macaronesia, North America, Asia, Africa, Australia [4, 6, 7].

Remarks. This species is characterized by a wide-spreading brown, isidiate crust growing among other lichens. It is easily demarcated from other known South Korean *Placynthiella* species by bearing isidiate-coralloid gonocysts and the C+ red reaction of the thallus due to presence of gyrophoric acid.

Specimens examined. South Korea, Jeollanam Prov., Jangheung Co., Gwansan-eup, Mt. Cheongwan, 34°32'47.2" N, 126°55'39.6" E, alt. 300 m, on *Zelkova* bark, October 6, 2005, L. Lökös, 050641 (BP, KoLRI); Suncheon City, Maegok-dong, Sunchon National University, 34°58'00.4" N, 127°28'32.9" E, alt. 115 m, on dead wood, October 8, 2005, L. Lökös, 050673 (BP, KoLRI). Kangwon Prov., Taebaek City, Mungoksodo-dong, Mt. Taebaek, Danggol-Manggyeong-sa, 37°06'08.3" N, 128°57'05.4" E, alt. 970 m, on bark, October 14, 2005, L. Lökös, 050732 (BP, KoLRI).

Artificial key of the lichen genus *Placynthiella* in South Korea

(species highlighted in bold are new to South Korea)

1. Thallus composed of isidioid granules, C+ red; apothecial margin persistent, paler than disc; gyrophoric acid, lecanoric acid and 5-*O*-methylhiascic acid present ***P. icmalea***
- 1a. Thallus otherwise, C–; apothecial margin soon excluded, concolorous with the disc; lichen substances absent 2
2. Hypothecium K+ reddish brown; apothecia often coalescing, pinkish-brown to dark red-brown (rarely blackish), margin soon disappearing, discs becoming strongly convex *P. uliginosa*
- 2a. Hypothecium K+ purple-violet; apothecia blackish (even when wet), with prominent incurved margins and concave discs that later become plane or slightly convex ***P. hyporhoda***

Acknowledgements

This work was supported by grants from the Korea National Research Resource Center Program (2010-0000660) through the National Research Foundation of Korea (NRF), from

the Korean Forest Service Program (KNA 2010) through the Korea National Arboretum, and from the Hungarian Scientific Research Fund (OTKA K81232). We are grateful to Dr Edit Farkas (MTA ÖBKI, Vácrátót, Hungary), who made the Fig. 1A photograph.

References

1. Kirk PM, Cannon PF, Minter DW, Stalpers JA. Ainsworth and Bisby's dictionary of the fungi. 10th ed. Wallingford: CAB International; 2008.
2. Moon KH. Lichens of Mt. Sorak in Korea. *J Hattori Bot Lab* 1999;86:187-220.
3. Orange A, James PW, White FJ. Microchemical methods for the identification of lichens. 2nd ed. London: British Lichen Society; 2010.
4. Hitch CJ, Purvis OW. *Placynthiella*. In: Smith CW, Aptroot A, Coppins BJ, Fletcher A, Gilbert OL, James PW, Wolseley PA, editors. The lichens of Great Britain and Ireland. London: Natural History Museum Publication and British Lichen Society; 2009. p. 712-4.
5. Printzen C, Knudsen K. *Placynthiella*. In: Nash TH 3rd, Gries C, Bungartz F, editors. Lichen flora of the Greater Sonoran Desert region, Vol. III. Tempe: Lichens Unlimited and Arizona State University; 2007. p. 391.
6. Ryan BD, Hertel H, Lendemer JC. *Placynthiella*. In: Nash TH 3rd, Ryan BD, Diederich P, Gries C, Bungartz F, editors. Lichen flora of the Greater Sonoran Desert region, Vol. II. Tempe: Lichens Unlimited and Arizona State University; 2004. p. 419-22.
7. Øvstedal DO, Smith RI. Lichens of Antarctica and South Georgia: a guide to their identification and ecology. Cambridge: Cambridge University Press; 2001.