

# 송담 실버타운

## Silvertown Songdam

우홍직 / 정회원 건축사사무소 프로세스

Architects / Woo, Hong-jig, KIRA

배경 및 장소 \_ 동해의 외로운섬 울릉도...

유일하게 노인복지시설이 없는 곳이었다. 하지만 울릉도의 고령화 속도는 다른 시군에 비해 빠르게 진행되고 실제 고령의 독거 노인들이 많이 살고 있다.

울릉도는 국토의 막내동이 독도(울릉도 동쪽으로 87km)와 더불어 우리나라 동해바다를 지키고 있는 대표적인 섬이다. 포항으로부터 217km 강원도 동해로부터 161km 떨어진 곳에 위치하고 있으며 현재 인구는 1만5천여명이 거주하며 성인봉(해발 983.6m)을 중심으로 전체 해안선이 56.5km에 달한다.

배치, 구성 \_ 우리 부지는 서면 태하리의 일주도로에 면한 서쪽 해안가의 '학포'라는 작은 어촌마을에 자리 잡은 곳으로 바다쪽이 확트인 약 20m이상 레벨을 가진 경사지였다.

경사지 극복이 배치계획의 관건이었으며, 해결방안으로 해안가 지형에서 많이 볼 수 있는 다랭이 배치로 여섯개의 넓은 단의 마당을 만들어 Mass를 형성하였다. 옥지와 가장 가까운 곳이라 맑은 날이면 옥지가 어렴풋이 보인다고 한다. 섬사람들의 옥지는 가고싶은 동경의 대상으로 건물 Mass(전망대)를 점진적으로 돌출시켜 한걸음 한걸음 옥지에 가고싶은 '그리움'을 표현하였다.

재료 \_ 외장은 노출콘크리트와 붉은 벽돌을 이용하여 자연친화적이며, 건물 주변에 많은 옹기 된장단지 건축주가 울릉도의 깨끗한 바닷물(심해수)로 호박된장을 개발하는 중이다. 그런데 이것이 주변 환경과 조화가 되어 특별한 경관을 형성하여 관광객들에게 많은 호응을 받는다고 한다.

예산과 거리상 감리업무의 한계로 일부재료와 디테일이 의도와 다르게 변형된 것이 아쉬움으로 남는다.

### Background and Place

Ulleungdo, a solitary island in the East Sea of Korea was the only region which had not had any welfare facility for the aged in Korea. However, aging rate of Ulleungdo is more rapidly increasing compared with other cities and counties and in fact, many old people live in this island.

Ulleungdo is one of the representative islands which keep its own position firmly in our East Sea along with Dokdo, the island belonging to our last territory [87km far from the east of Ulleungdo]. It is located 217km and 161km far from Pohang city and the east sea of Gangwon-do each and has 15,000 inhabitants, and its total coastline length amounts to 56.5km centering around [Mt.] Seonginbong (which is 983.6m above the sea)

### Arrangement and Composition

Our building site was a slope with the level of over 20m which has open sea as the place that has been located at a sea village called "Hakpo," on the west seashore facing a running road of Taeha-ri, Seo-myeon. Overcoming a slope was a key for our arrangement plan, and formed a mass by making six yards with wide raised ground using 'Daraengi arrangement' which can be easily seen in topographies of seaside as its solution. It is said that land can be seen dimly on a clear day because it is the closest by land. Its composition expresses "yearning" that makes them wish to go to land step by step by gradually bringing the building mass into prominence as land is a longing object of islanders to which they want to go.

### Materials

This silver town is nature-friendly because exposed concrete and red bricks were used as its facing materials, and many pottery soybean paste pots contain pumpkin doenjang which is being developed using clear seawater [deep water] of Ulleungdo by an owner who constructed its building. It is said that this building is loved by many tourists since it is in harmony with surroundings and forms special scenery.

We feel something wanting because its some materials and details was transformed in unintended way due to the limitations of construction supervision service in terms of budget and distance. ■

Project Team Cho, Seung-oh · Seo, Won-duck · Bak, Han-jeong · Kang, Ju-yeon

Client Social Welfare Corporation Youngbulwon

Location Gyeongsangbuk Ulleung-gun Seo-myeon Taehari 450

Site Area 5,359m<sup>2</sup>

Building Area 1,509.55m<sup>2</sup>

Gross Floor Area 2,458.54m<sup>2</sup>

Building to Land Ratio 28.17%

Floor Area Ratio 43.58%

Structure R.C

Structural Engineer Beom Structural(Jang, Woo-hyuk)

Electrical Engineer Hankook Engineering

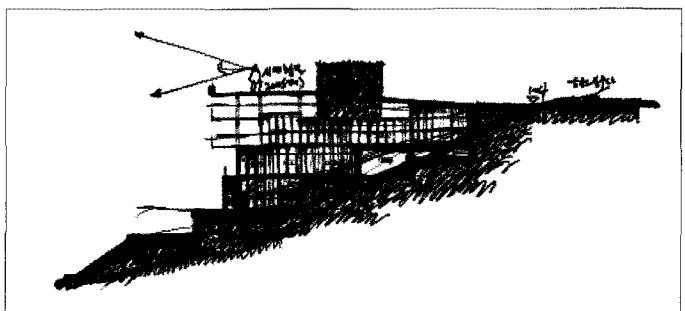
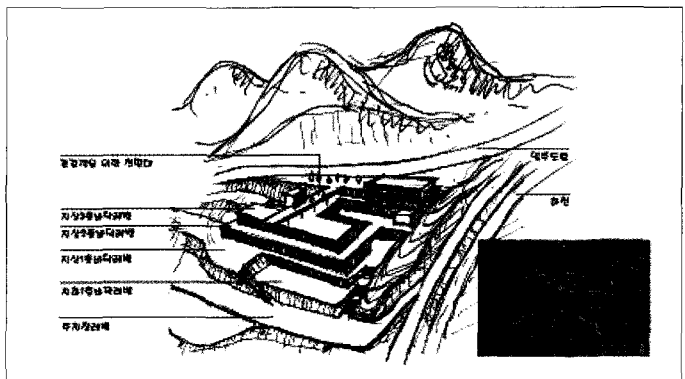
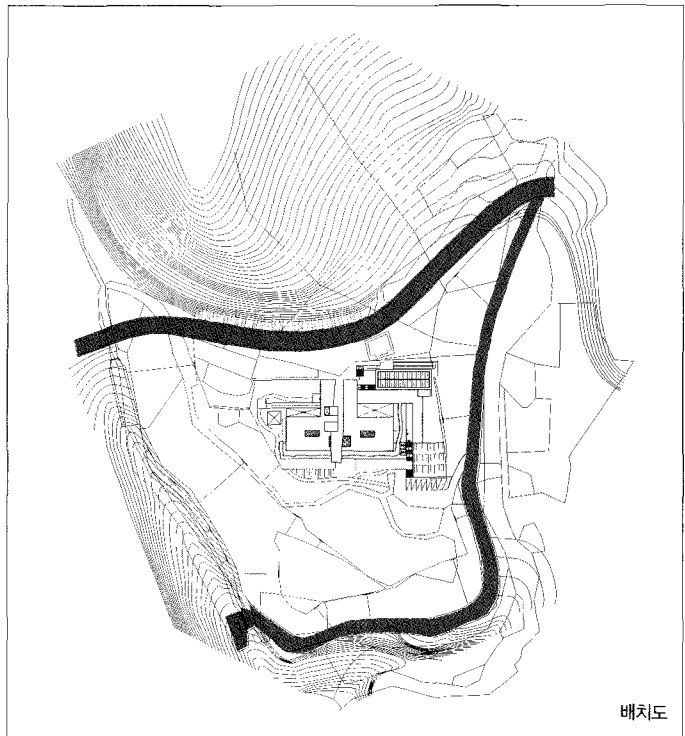
General Contractor Julie corporation

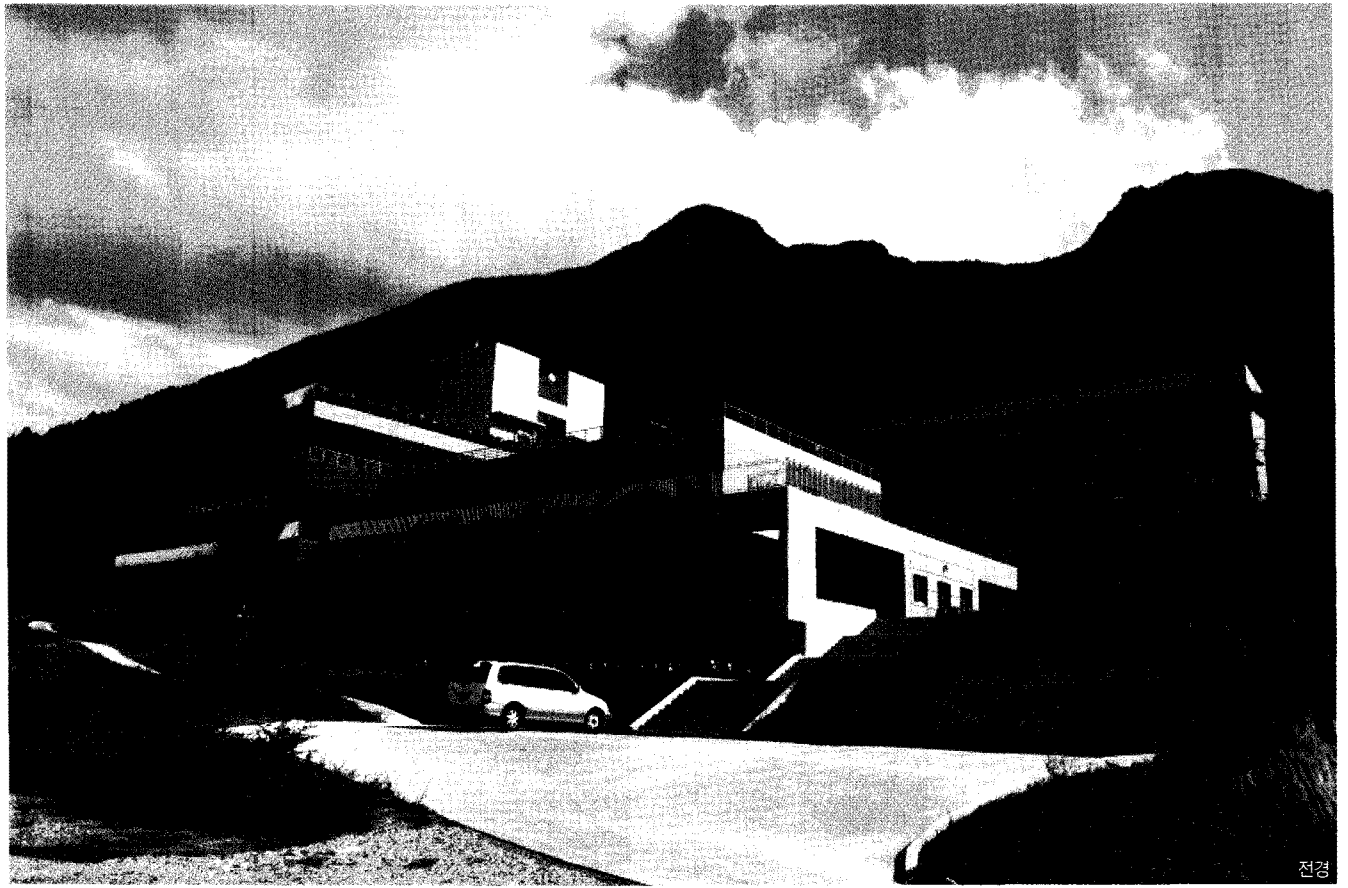
Building Scope B1, 3F

Finishing Materials Exposed Concrete, Copper Fold

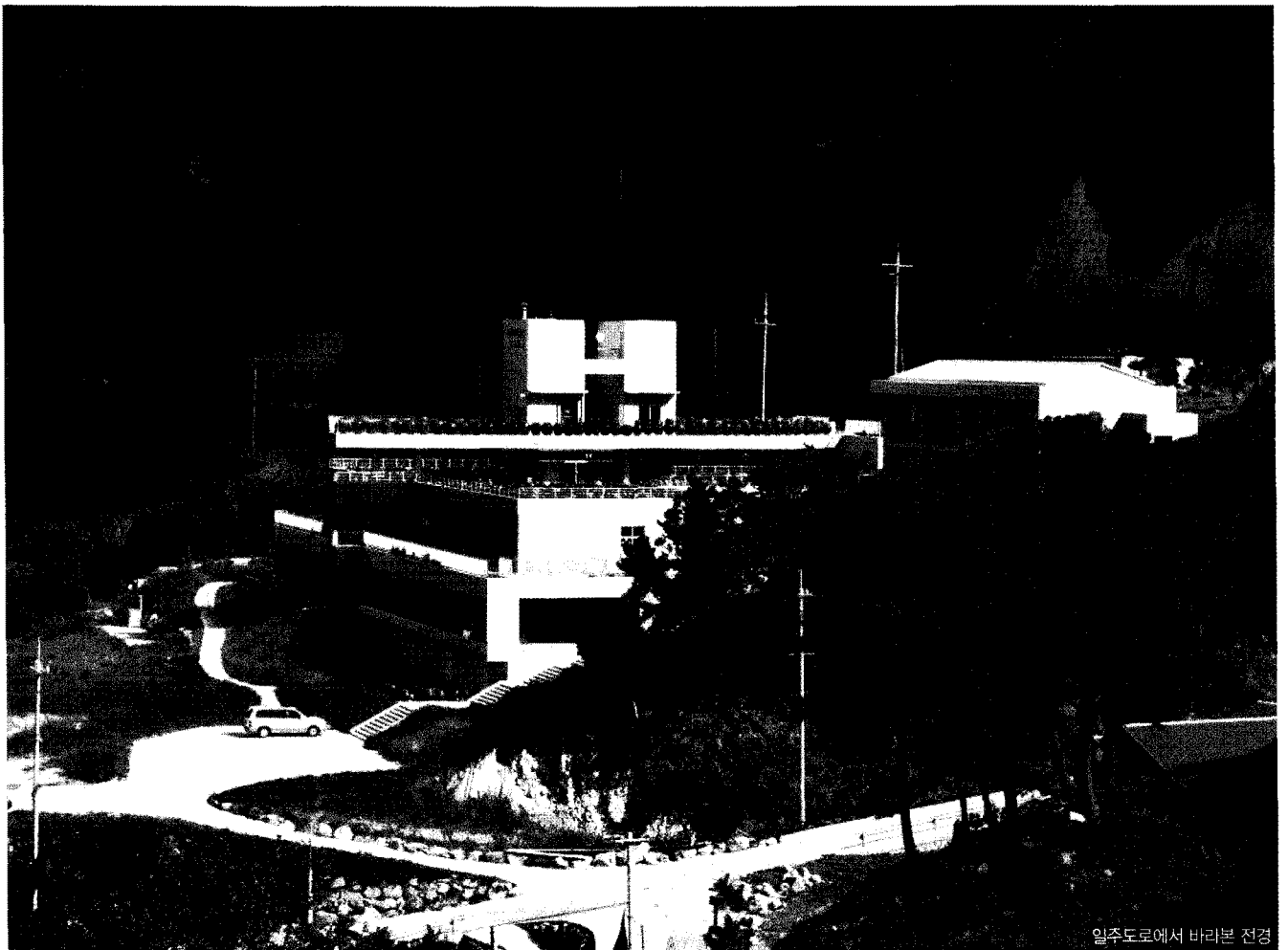
Photographer not disclosed

Cost not disclosed

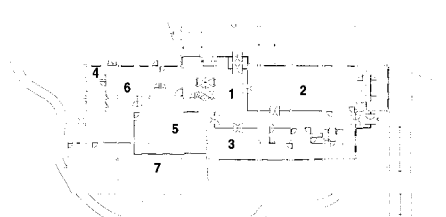




전경

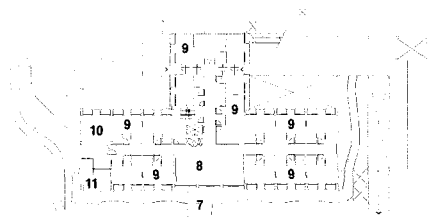


일주도로에서 바라본 전경

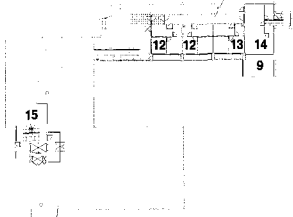


0 1 3 5m

1층 평면도

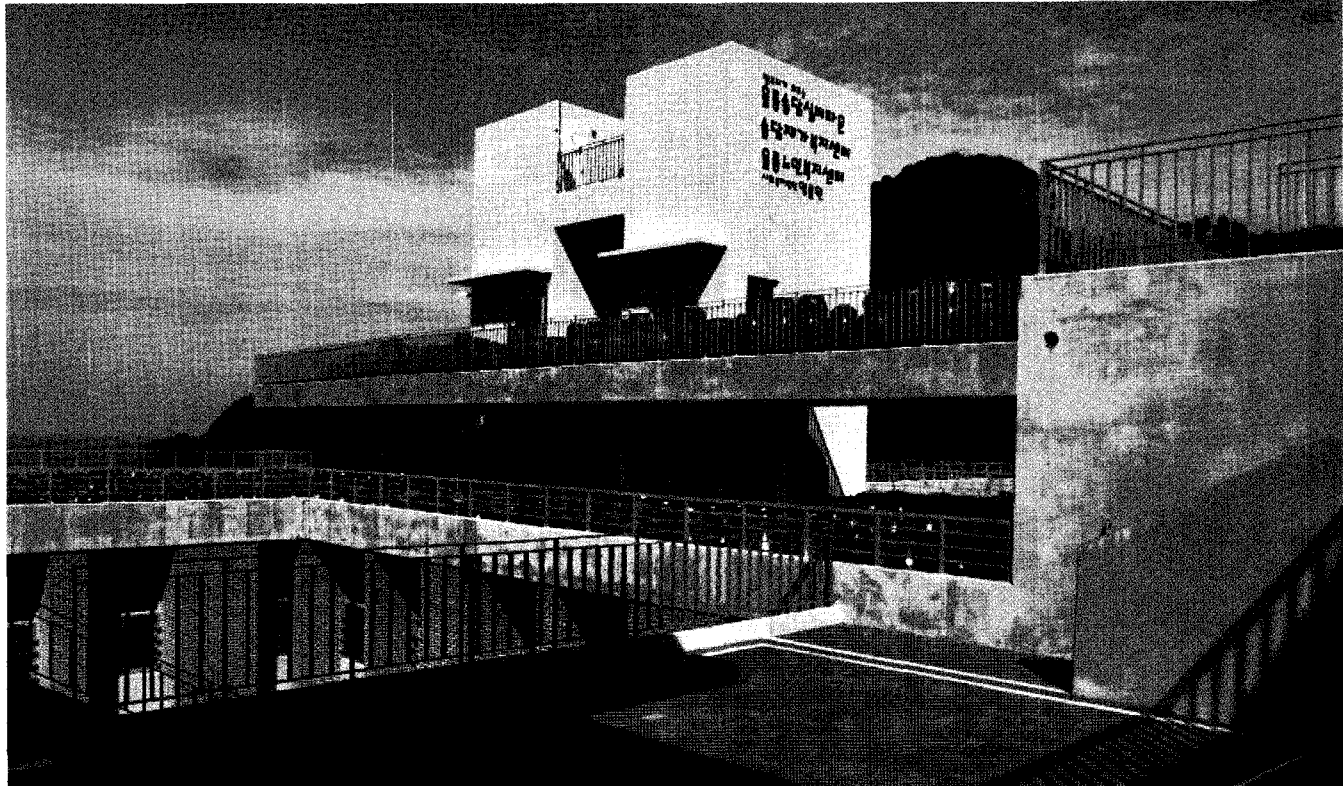
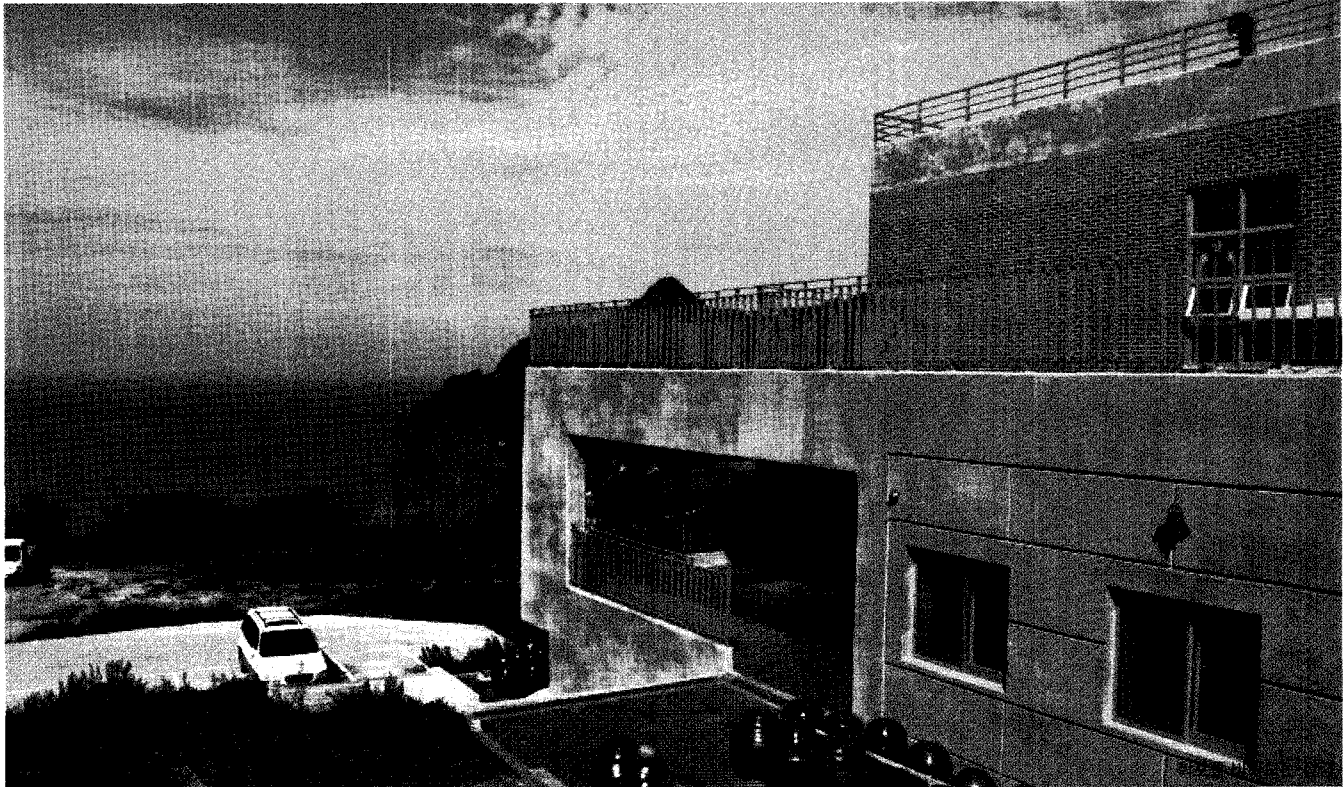


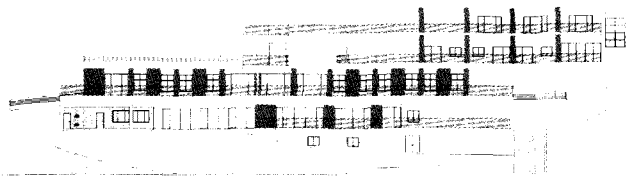
A동 2층 B동 PIT층 평면도



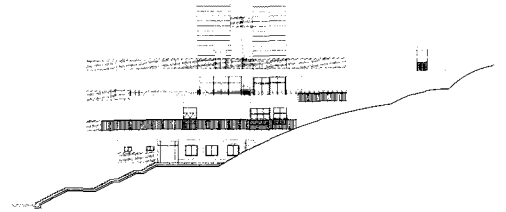
A동3층, B동1층평면도

- |          |       |         |         |                  |
|----------|-------|---------|---------|------------------|
| 01_홀     | 04_방  | 07_테라   | 10_물리교실 | 13_의료실 및 간호사실    |
| 02_프로그램실 | 05_식당 | 08_배회거실 | 11_의무실  | 14_직업 및 일상동작 훈련실 |
| 03_회의실   | 06_주방 | 09_거실   | 12_침실   | 15_일광욕실          |

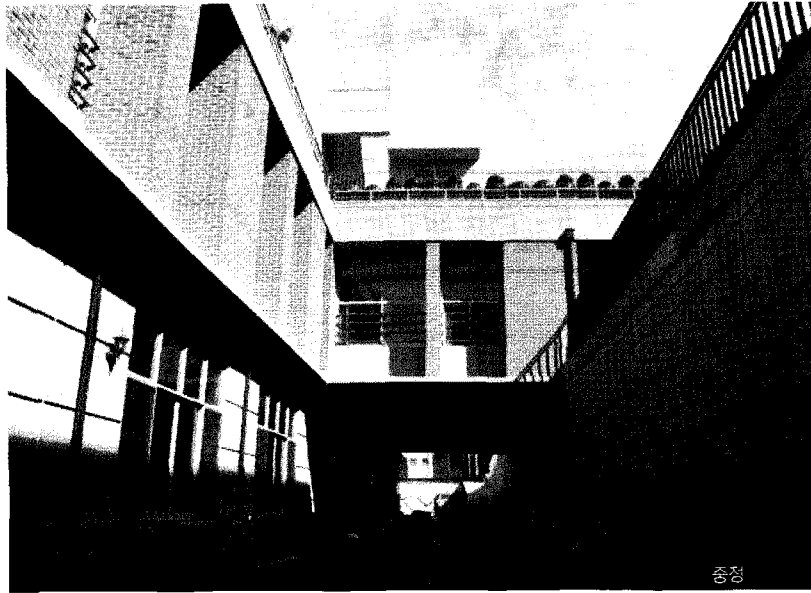




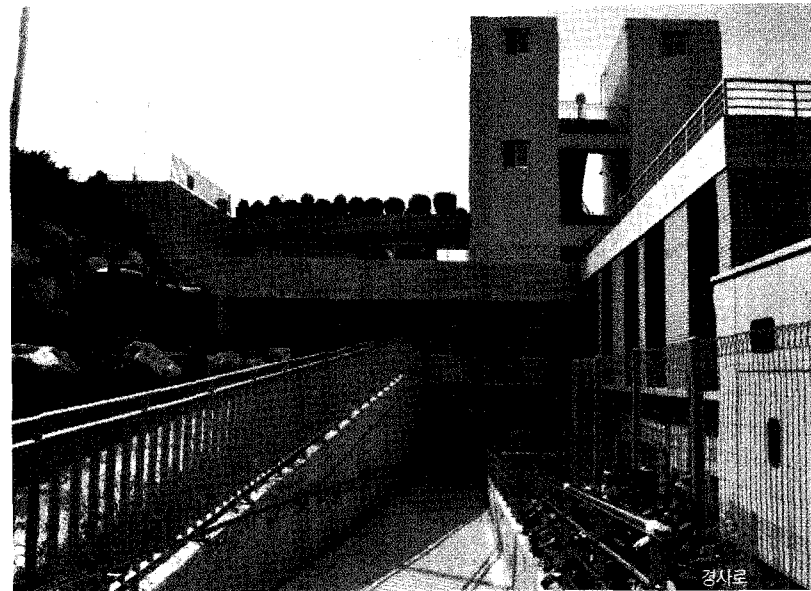
정면도



우측면도

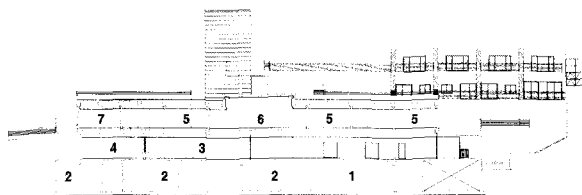


중정

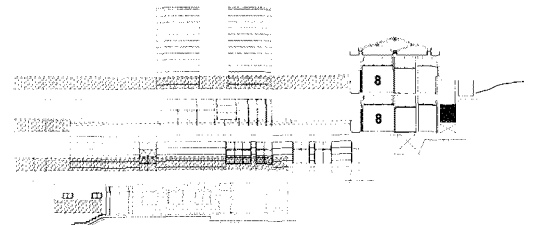


경사로

- 01\_ 기계실      04\_ 주방      07\_ 물리치료실
- 02\_ 물탱크실    05\_ 거실      08\_ 침실
- 03\_ 식당
- 06\_ 배회거실



횡단면도



중단면도