

Priority Based Interface Selection for Overlaying Heterogeneous Networks

Mostafa Zaman Chowdhury* *Regular Member*, Yeong Min Jang* *Lifelong Member*

ABSTRACT

Offering of different attractive opportunities by different wireless technologies trends the convergence of heterogeneous networks for the future wireless communication system. To make a seamless handover among the heterogeneous networks, the optimization of the power consumption, and optimal selection of interface are the challenging issues. The access of multi interfaces simultaneously reduces the handover latency and data loss in heterogeneous handover. The mobile node (MN) maintains one interface connection while other interface is used for handover process. However, it causes much battery power consumption. In this paper we propose an efficient interface selection scheme including interface selection algorithms, interface selection procedures considering battery power consumption and user mobility with other existing parameters for overlaying networks. We also propose a priority based network selection scheme according to the service types. MN's battery power level, provision of QoS/QoE and our proposed priority parameters are considered as more important parameters for our interface selection algorithm. The performances of the proposed scheme are verified using numerical analysis.

Key Words : Heterogeneous networks, battery power, interface selection, CAC, overlaying networks

I. Introduction

The tremendously increasing of the use of wireless networks has been seen in the recent years and it will continue in the future. Different wireless technologies have been developed due to huge demands, varieties of user types, and varieties of user's requirement. The future wireless networks will be the convergence of these heterogeneous networks. These network technologies vary widely in terms of bandwidths, Quality of Service (QoS) provisioning, security mechanisms, price, coverage area and etc. Suppose, the complementary characteristics of WLANs and Universal Mobile Telecommunications System (UMTS) based cellular networks make them attractive for integration. This integration offers the best of both technologies.

Thus, a mobile node (MN) with multiple wireless interfaces has become increasingly popular in recent years^[1]. In heterogeneous overlay network, the MN can select one interface that is best or suitable in terms of price, QoS, Quality of Experience (QoE), throughput or other parameters. During connection, changes in the availability or characteristics of an access network may result in a situation where already established connections should be moved from one interface to another. This change of interface should be performed efficiently and seamlessly. The goal of the next generation network is to integrate multiple wireless access technologies to provide seamless mobility for the mobile users with high-speed wireless connectivity^[2]. Seamless handover, resource management, and CAC to support QoS and multiple interface management to

* This research was supported by the MKE (Ministry of Knowledge and Economy), Korea, under the ITRC (Information Technology Research Center) support program supervised by the IITA (Institute of Information Technology Assessment) (IITA-2009-C1090-0902-0019).

* Kookmin University, Korea, (mzceee@kookmin.ac.kr, yjang@kookmin.ac.kr)

논문번호 : KICS2009-12-613, 접수일자 : 2009년 12월 10일, 최종논문접수일자 : 2010년 7월 5일

reduce power consumption in MN are the most important issues for overlaying networks. A MN, especially a battery-operated device with multiple wireless interfaces, power consumption is one of the critical problems^[1].

For traditional overlay network, the handover decision depends on several parameters like the signal strength, the available bandwidth, the price of the link, the security level, and the coverage radius^[3]. As the user mobility and power of the battery are very important issues, these parameters should be considered as important parameter for suitable interface selection. Also for different applications, different parameters are important. Hence, for an efficient interface selection scheme, the weight of different parameters should be different for different applications. The power management issue can be added to IEEE 802.21 Media Independent Handover (MIH)^[4,5] for interface selection in overlay network. For our proposed interface selection algorithm, user mobility, MN's battery level and provision of QoS/QoE in the target interface have been considered as important parameters with other existing parameters for our interface selection scheme. The consideration of user mobility reduces some unnecessary handovers. Thus the proposed scheme will provide better QoS as required by various applications.

The rest of the paper is organized as follows. Section 2 provides the related study about the power management issues and interface selection schemes. Our proposed interface selection scheme is presented in Section 3. In Section 4, we demonstrate the numerical results for the proposed algorithm. We give our conclusion in Section 5.

II. Related Works

Figure 1 shows one example that the users can be connected with multiple interfaces. However, the battery power consumption for the multiple interfaces is more than that of use single interface. Also, the access of different network interface causes different level of power consumption. Thus, an efficient mechanism and algorithm are needed for

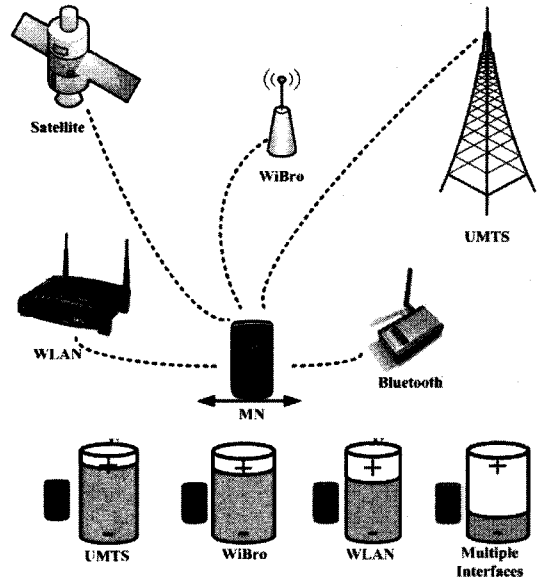


Fig. 1. Effect of battery power consumption for the use of different interfaces

the selection of best interface.

For the existing interface selection mechanism, several parameters are used for handover decision matrix. The interface selection procedure is a Multiple Attribute Decision Making (MADM) problem where alternative options are possible by multiple numbers of links (interfaces). Best handover decision depends on how the parameters are selected and how these parameters are used for interface selection algorithm. There are several works already done for this area. Different researchers^[1,3,5-9,12] assume different parameters for their interface selection algorithm but no one assume the status of MN's battery or battery profile, user mobility, and provision of QoS/QoE in the target interface as their interface selection algorithm. The authors in [3] used six parameters for each interface; signal strength, bit rate, power consumption, price, coverage and security. They made weight vector or profile for the interface selection algorithm. Simple Additive Weighting and Weighted Product proposed in [3] for the measurement of each property. They did not consider user mobility and battery profile for their interface selection algorithm.

Authors in [10] proposed cost function based model for interface selection algorithm. Signal

strength (s), cost of using the network access technology (c) and client power consumed for the particular access technology (p) are used as input parameters for their algorithm. They used just linear equation for the network selection algorithm. According to their algorithm, the score function (SF) for interface selection is

$$SF_i = (w_{sf} f_{s,i}) + (w_{pf} f_{p,i}) + (w_{cf} f_{c,i}) \quad (1)$$

According to [9] the power consumption for a specific application in WLAN C_w and power consumption in UMTS C_u are given by

$$C_w = (P_{tw} C_{tw} + P_{rw} C_{rw} + P_{lw} C_{lw} + P_{sw} C_{sw}) T \quad (2)$$

$$C_u = (P_{tu} C_{tu} + P_{ru} C_{ru} + P_{pu} C_{pu} + P_{su} C_{su}) T \quad (3)$$

In equation (2) and (3) C_{tw} , C_{rw} , C_{lw} , and C_{sw} represents the power consumption in transmit, receive, idle and sleep state respectively for WLAN, while P_{tw} , P_{rw} , P_{lw} , and P_{sw} are the probabilities of being in any of the respective communication state. C_{tu} , C_{ru} , C_{su} , and C_{pu} represent the power consumption in transmit, receive, signaling and power-saving state respectively for UMTS, while P_{tu} , P_{ru} , P_{su} , and P_{pu} are the probabilities of being in any of the respective communication state. Hence, power consumption depends on mode of operations.

III. Proposed Network Selection Scheme

3.1 Proposed Interface Selection Algorithm

The interface selection mechanism considers different parameters to select the best interface. The weight of all the parameters should not same to make a best selection. The algorithm should make a big weight for some higher priority parameters to emphasis those parameters. The traditional existing network selection algorithms^[2-4,7,8] do not consider different priority parameters for different applications. They also do not consider the user mobility and normal or battery power saving mode for the interface selection algorithm. In our proposed

algorithm we divide all the m number of interface selection parameters into two groups. One group takes more priority than another group for interface selection decision. The weight (w_i) of each parameter is different. We have N numbers of available interfaces. Suppose, battery power level (P_{bat}) and other M number of parameters for interface selection. Among the M , q number of parameters have less priority than other remaining ($M-q$) parameters, then the score (S) of the measurement is presented as

$$S = f_1(P_{bat}) [f_2(w_1, w_2, \dots, w_q) + f_3(w_{q+1}, w_{q+2}, \dots, w_M)] \quad (4)$$

For the network selection algorithm, current level or status of MN's battery condition should be considered as well with other traditional parameters. We introduce some new parameters compared to traditional scheme. We consider three factors such as power saving/normal mode, low priority parameters, and higher priority parameters by three functions in (4). The function for the power saving/normal mode enhances the score to select the lower power consuming interface. The function for higher priority parameters enhances the score to select the interface which provide better service in terms of higher priority parameters. For our proposed algorithm we consider battery power level and other eight parameters ($M=8$); signal strength, throughput, power consumption, cost, cell coverage, QoS/QoE level, security, and user's mobility. Equation (4) measures the total score for each interface. We consider two modes of operation for network selection. Only for the power saving mode operation, we consider the MN's battery condition.

Suppose w_m and S_m indicates the weight and scaling factor of m-th interface selection parameter respectively. If P_{bat} indicates the battery power level of the MN, then the score of i-th interface among N interfaces can be calculated as:

The weight of each parameter is

$$0 \leq w_m \leq 1 \quad (5)$$

The summation of the scaling factors of all the interface selection parameters can be presented as

$$\sum_{m=1}^M S_m = 1 \tag{6}$$

From (5) and (6), we find that

$$0 \leq \sum_{m=1}^M w_m S_m \leq 1 \tag{7}$$

The available N numbers of interfaces are ranked (R) according to the power consumption by each available interface. R is nothing but just ranking value of an interface in terms of power consumption. This ranking order may change if the position of the user is changed. The lower received signal by MN from the base station or access point causes higher battery power consumption of the MN. For lowest power consuming interface, $R=1$ and highest power consuming interface $R=N$. By measuring the received signal (RSSI), the rank is done. The function $f_1(P_{bat})$ that is related to MN's battery is expressed by

$$f_1(P_{bat}) = \begin{cases} \frac{1}{\exp(1)} & \text{normal mode} \\ \frac{1}{\exp(1)\log(10R)} & \text{power saving mode} \end{cases} \tag{8}$$

where $1 \leq R \leq N$ for N numbers of available interfaces.

The score for the lower priority interface selection parameters is calculated as

$$f_2(w_1, w_2, \dots, w_q) = \sum_{m=1}^q w_m S_m = 1 \tag{9}$$

The linear function does not enhance the weight of higher priority parameters sufficiently. We use exponential function instead of linear function for the higher priority parameters. The exponential function is used to give more emphasis for the higher priority parameters. The weight for the higher priority interface selection parameters is calculated as

$$f_3(w_{q+1}, w_{q+2}, \dots, w_M) = \exp\left(\sum_{m=q+1}^M w_m S_m\right) \tag{10}$$

In (8), we use exponential function to limit the total maximum score to one. Equations (4) to (10) are used to calculate the score of each candidate interface for the network selection. Equation (8) introduces battery power level condition in the interface selection algorithm. Thus, the MN will be operated in power saving mode if the battery level of the MN is insufficient or below a threshold level. Lower than threshold level means, the battery power level is going to be worst condition and thus the MN should select an interface that consumes lower power. Equation (8) is the function of power saving/normal mode. The term $\frac{1}{\log(10R)}$ for the power saving mode reduces the total score by the factor $\log(10R)$. Thus for the higher consuming interface, the score become less.

The impact of R in the interface selection algorithm may be changed by the designer as required. The lower priority and higher priority parameters are divided according the service type. In our proposal, we considered many parameters.

All parameters are not equally important for every service. The lower priority and higher priority

Table 1. Proposed classified priority parameters for interface selection

| Type of service | Lower priority parameters (m=1 to q) | Higher priority parameters (m=q+1 to M) |
|-----------------|--|---|
| Real-time voice | Throughput, and power consumption. | Signal strength, cost, cell coverage, QoS/QoE level, security, and user's mobility. |
| Streaming video | Power consumption, cell coverage, QoS/QoE level, security, and user's mobility. | Signal strength, throughput, and cost |
| Command/control | Throughput, cost, power consumption, cell coverage, and user's mobility. | Signal strength, QoS/QoE level, and security. |
| Background | Signal strength, power consumption, cell coverage, QoS/QoE level, security, and user's mobility. | Throughput and cost. |

parameters are divided according the service type. In (10), the exponential function gives more emphasize on more important parameters to select that interface which provide better services in terms of those parameters.

Based on the service nature and specified QoS requirement for various services the proposed classified priority parameters for interface selection are shown in Table 1. In case of more than two services, the algorithm will calculate the score for the individual service and then it will make an average to select a interface.

3.2 Interface Selection Procedure

The proposed interface selection steps are shown in Figure 2. The cross layer information for different network interfaces are collected, and then, these information and some pre-defined policies for interface selection are checked using proposed algorithm. The algorithm calculates total score for each interface. According to the result of the algorithm, all the available N interfaces are ranked. For example best interface is ranked as 1 and the

worst one is ranked as N . Thus, MN will try to handover to best selected network. If resources are available in the best selected interface, then the MN handover to that interface otherwise it will try for the next ranked interface. This process will continue until $(N-1)$ ranked interface.

The decision module collects information from user interface, battery profile, policy module, MIHF, and link information module. User interface provides information about the type of application, access technology, user's QoS/QoE requirement, and etc. Battery profile provides the information about battery power level. Policy module provides the pre-defined policies and interface selection algorithm. The link information module observes different layers condition and combine these information using cross layer optimization and then forward these information to decision module. The decision module selects a best interface according to the policies, and then forwards the decision to handover execution module. The decision module also makes a rank for the available interfaces according to the total weight. The handover execution module executes the handover.

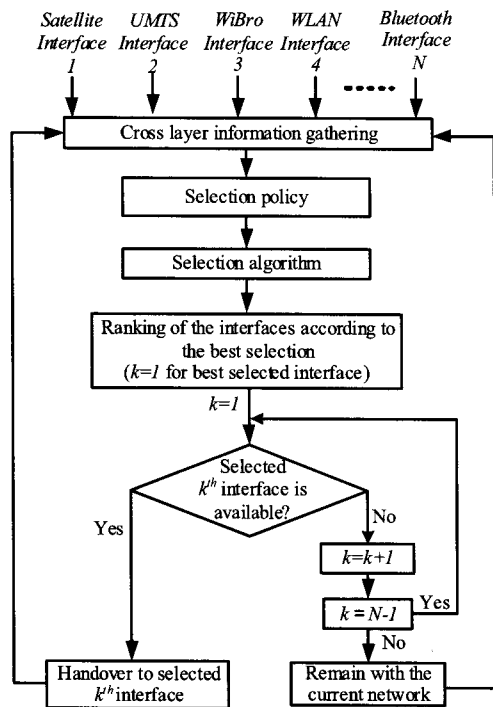


Fig. 2. Proposed steps for the execution of interface selection scheme

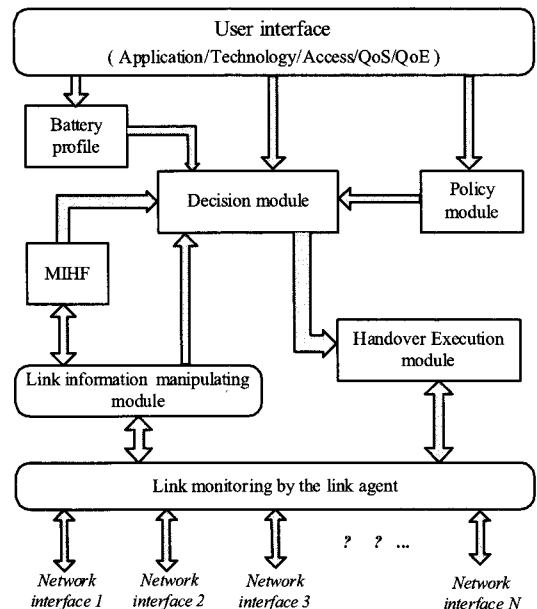


Fig. 3. Proposed functional architecture and procedure for the interface selection

IV. Numerical Analysis

The performance of the proposed scheme is verified using numerical analysis. We consider background data traffic and real-time voice traffic in UMTS/WLAN overlaying networks. The Okumura-Hata model^[11] for path loss is considered. Table 2 shows all other basic assumptions for our analysis. Based on the importance of each parameter, the assumed scaling factor (S_m) of each parameter is given here.

The weight ratio (w_m) of each interface is assumed according to their capabilities to provide level of services. The S_m and w_m may vary for different network condition and user requirement. In our assumption, we give emphasis on the cost and throughput. However, for power saving mode, we also give emphasis on battery power consumption. In our numerical analysis, we assume requested bandwidth is available in both the interfaces whenever the user requests for a call. From the path loss model, we calculate that the battery power

consumption of a MN for UMTS interface is less than the WLAN interface if the distance of MN from UMTS BS is less than 1700m. However, the coverage area of UMTS base station (BS) is 2280m. If the distance of MN from WLAN AP is constant whatever the distance of the MN from the macro-cellular BS, the received signal strength from the WLAN AP can be considered as same value for every WLAN environment. Hence, the score of WLAN interface is almost constant for normal operating condition. But with the increasing the distance between UMTS BS and MN, the received signal level decreases and also battery power consumption increases. The numerical results show that the total score of each interface for interface selection vary according to type of applications and environment. The results in four figures are taken for four different environments.

Figure 4 shows the total score of WLAN and UMTS interfaces both for the background data traffic and real-time voice traffic in normal operating mode. As the distance between the WLAN AP and the MN is considered constant, the total score for WLAN interface is constant both for the data and voice services. It shows that WLAN is better due to lower cost, higher throughput and better signal quality in home environment. A data or voice user in WLAN coverage area where the received signal from WLAN AP is very good condition, will select a UMTS interface only if the resource of WLAN is

Table 2. Basic assumptions for the performance analysis

| Parameters for path loss model | | |
|-----------------------------------|--------------------------|-------------------------|
| UMTS | Transmit power | 1.5 kw |
| | Height of BS | 100 m |
| | Frequency | 900 MHz |
| WLAN | Transmit power | 100 mW |
| | Frequency | 2.5 G Hz |
| | Height of AP | 2 m |
| | Coverage area | 30 m |
| Assumptions for weight parameters | | |
| Parameter | Scaling factor (S_m) | Weight ratio (w_m) |
| Cost | 0.35 | UMTS(0.1) : WLAN(1) |
| Throughput | 0.15 | UMTS(0.1) : WLAN(1) |
| QoS/QoE | 0.1 | UMTS(1) : WLAN(0.25) |
| Mobility | 0.1 | UMTS(1) : WLAN(0.01) |
| Signal strength | 0.1 | Depends on the distance |
| Power Consumption | 0.08 | Depends on the distance |
| Security Level | 0.07 | UMTS(1) : WLAN(0.25) |
| Cell coverage | 0.05 | UMTS(1) : WLAN(0.01) |

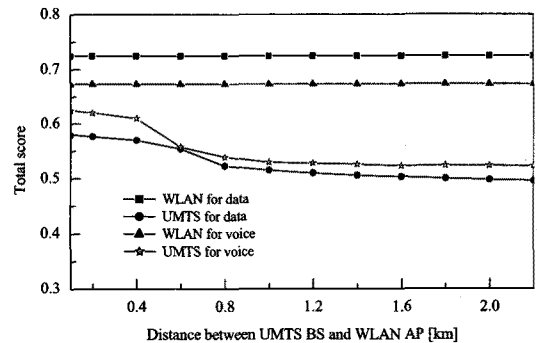


Fig. 4. The score of each interface whenever the MN has sufficient battery power level and changing UMTS signal environment. The distance between the MN and the WLAN AP is always 10m. The user is assumed to be zero velocity.

not available. For zero user velocity, the choice of WLAN interface will be cost effective for the user. Our algorithm also selects the WLAN. The selection of the WLAN interface for both the voice and data users enhances the throughput and reduces the cost.

Whenever the battery level of the MN is not sufficient, it will operate on the power saving mode. Figure 5 shows the total score of interface selection whenever battery power level is not sufficient. At this moment saving of power is more important. Thus, the MN can connect with the wireless link for longer time using power saving mode. In this condition, the interface selection algorithm gives more emphasis on that interface which consumes less power. Figure 5 also shows that the score of UMTS interface became very small after reaching 1700m distance between the MN and the UMTS BS. Because of cell edge, UMTS causes more power consumption. At this distance, the total score of WLAN interface became high to emphasize the WLAN interface. In the power saving mode of operation, UMTS is an optimal choice whenever the distance between the MN and the BS is small. Even lower throughput and higher cost causes by the UMTS interface for the user, but the selection of this interface reduces the battery power consumption if the distance between the user and the UMTS BS is less than 1700m. However, the data user selects WLAN for the distance between 600m and 1700m because throughput is more important for data user

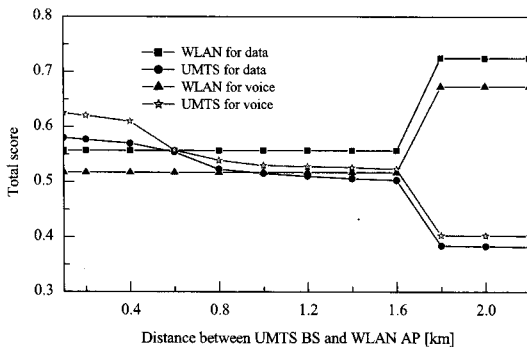


Fig. 5. Total score of a interface whenever the MN has insufficient battery power level and changing UMTS signal environment. The distance between the MN and the WLAN AP is always 10m. The user is assumed to be zero velocity.

compare to saving of power. The selection of WLAN for the distance more than 1700m causes higher throughput, lower cost and saving of power for both the voice and data users.

Figure 6 shows the interface selection results for the changing WLAN signal environment with zero user velocity. In this condition, after 20m distance between MN and WLAN AP, the voice user selects UMTS interface due to degraded WLAN signal level. However, data user still uses the WLAN interface due to lower cost and higher throughput. The data user can tolerate the QoS level. Thus, the data user selects the WLAN interface until the receiver is capable to receive the WLAN signal. Hence, the interface selection provides sufficient QoS level for the voice users. Here the selection of WLAN by data user causes higher throughput, lower cost. The selection of WLAN by voice user for less than 20m distance between the WLAN AP and MN causes better signal quality, higher throughput, lower cost, and saving of battery power. However, the distance more than 20m causes bad signal quality and causes higher power consumption. Hence the selection of UMTS interface can longer the battery lifetime of voice user for this condition. The performances for the mobile users with different velocity are shown in Figure 7. The interface selection prominences the UMTS interface for the user with higher velocity. Especially for voice user, the score of the UMTS interface increases rapidly

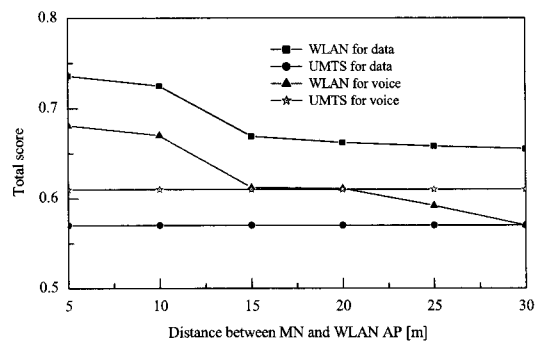


Fig. 6. Total score of each interface whenever the MN has insufficient battery power level and changing WLAN signal environment. The distance between the MN and the UMTS BS is always 400m. The user is assumed to be zero velocity.

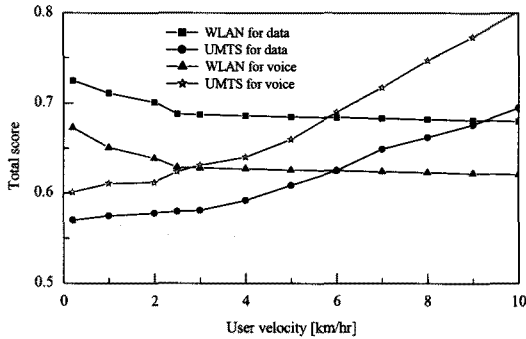


Fig. 7. Total score of each interface whenever the MN has insufficient battery power level and changing the user mobility environment. The distance between the MN and the WLAN AP is always 10 m. The WLAN AP and the UMTS BS are 400m away.

with increasing user velocity. The higher velocity causes more handovers in the system, higher dropping probability of call, and degrades the QoS level. The selection of the UMTS selection for higher velocity users improve the QoS/QoE level even though the selection of UMTS causes lower the throughput and higher cost.

All the numerical results in Fig. 4 to 7 show that the proposed scheme always selects the best interface to provide sufficient QoS with cheaper price whatever the environment. The proposed scheme chooses WLAN interface for normal conditions to increase the throughput. However, the proposed algorithm chooses the UMTS interface for the higher mobility condition. In normal condition, users always give more preference for cost and then throughput. In our assumption, we also gave more preference for cost and throughput. Then, in our numerical results in Fig. 4 to 7, we proved that our algorithm is also cost effective and provide better throughput. For the battery power saving mode, our algorithm also emphasis that interface which consume less power. For the higher mobility case, our algorithm emphasis that interface which support higher mobility. These results are also feasible with the assumption. Thus our algorithm considers different condition. It can also be proved, suppose if we give more preference for security (for example in internet banking), then our algorithm will make more score for UMTS interface. Because, the UMTS

provides better security level than WLAN. Thus, the proposed scheme is a promising scheme for the interface selection in multi-radio environment.

V. Conclusion

Multiple choices of interfaces are good opportunities to access multiple access networks with the suitable price and better QoS/QoE level as required. In this paper we proposed priority based interface selection parameters. Based on the application types and user mobility, the more priority parameters are focused for the interface selection algorithm. The current battery power level has also been considered as the interface selection parameter for the interface selection algorithm. Thus, for lower battery level environment, the MN will operate in the power saving mode to select the low power consuming interface. We also considered QoS and QoE level in the interface selection algorithm. The proposed functional architecture for interface selection can provide a best handover decision for overlaying network. The numerical results show that the proposed algorithm is capable to select appropriate interface in both the normal operating mode and power saving mode. The algorithm gives more preference for that that interface which can provide better services in terms the higher scaling factor parameter. The MN will support the seamless services for longer time by the proposed power saving mode operation. The reduction of unnecessary handovers for the higher velocity users enhances the QoS level.

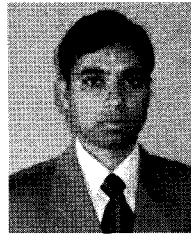
References

- [1] S. L. Tsao and E. Cheng, "Energy-Conserving Always-On Schemes for A Mobile Node with Multiple Interfaces in All-IP Network," IEEE International Symposium on PIMRC, Sept. 2007.
- [2] D. Niyato and E. Hossain, "Dynamics of Network Selection in Heterogeneous Wireless Networks: An Evolutionary Game Approach," IEEE Trans. on Vehicular

Tech., May 2009.

- [3] J. Puttonen and G. Fekete, "Interface Selection for Multi-homed Mobile Hosts," IEEE International Symposium on PIMRC, Sept. 2006.
- [4] G. Lampropoulos, A. K. Salkintzis, and N. Passas, "Media-Independent Handover for Seamless Service Provision in Heterogeneous Networks," IEEE Comm. Mag., Jan. 2008.
- [5] Ching-Lun, L. J. Y. Pan, and C. H. Ho, "Hand-Off Evolution with Multiple Interfaces," IEEE Computer Society, Sept./Oct. 2008.
- [6] L. Li, H. Peilin, and L. Hancheng, "Mobile IPv6 with Multiple Interfaces in Heterogeneous Networks," IEEE Conf. on Comm. and Networking, 2006.
- [7] J. Yitalo, T. Jokikyyny, T. Kauppinen, A. J. Tuominen, and J. Laine, "Dynamic Network Interface Selection in Multihomed Mobile Hosts," Proc. of the HICSS, 2003.
- [8] S. Lee and N. Golmie, "Power-Efficient Interface Selection Scheme using Paging of WWAN for WLAN in Heterogeneous Wireless Networks," IEEE International Conf. on Comm., June 2006.
- [9] G. Lampropoulos, A. Kaloxylos, N. Passas, and L. Merakos, "A Power Consumption Analysis of Tight-Coupled WLAN/UMTS Networks," IEEE International Symposium on PIMRC, Sept. 2007
- [10] S. Devi M.K. and P. Agrawal, "Dynamic Interface Selection in Portable Multi-interface Terminals," IEEE International Conf. on Portable Information Devices, May 2007.
- [11] K. Pahlavan and P. Krishnamurthy, Principles of Wireless Networks, Prentice Hall PTR, New Jersey, 2002.
- [12] D. Niyato and E. Hossain, "Dynamics of Network Selection in Heterogeneous Wireless Networks: An Evolutionary Game Approach," IEEE Trans. on Vehicular Technology, May 2009.

Mostafa Zaman Chowdhury Regular Member

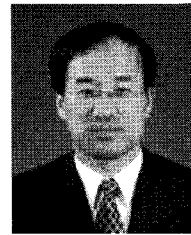


He received B.Sc. in EEE from Khulna University of Engineering and Technology (KUET), Bangladesh in 2002. Then, he joined as Lecturer and Assistant Professor in EEE department of KUET, in

2003 and 2006 respectively. He completed his MS in Electronics Engineering from Kookmin University, Korea in 2008. Currently he is continuing his Ph.D. studies in Kookmin University. His current research interests focus on convergence networks, QoS provisioning, mobility management, and femtocell networks.

Yeong Min Jang

Lifelong Member



He received the B.E. and M.E. degree in Electronics Engineering from Kyungpook National University, Korea, in 1985 and 1987, respectively. He received the PhD degree in Computer Science from the

University of Massachusetts, USA, in 1999. He worked for ETRI between 1987 and 2000. Since Sept. 2002, he is with the School of Electrical Engineering, Kookmin University, Korea. His research interests are IMT advanced, LED Communication, radio resource management, and Multi Screen convergence networks.