

Control of an invasive alien species, *Ambrosia trifida* with restoration by introducing willows as a typical riparian vegetation

Chang Seok Lee^{1,*}, Yong Chan Cho², Hyun Cheol Shin², Gyung Soon Kim² and Jeong Hoon Pi²

¹Faculty of Environment and Life Sciences, Seoul Women's University, Seoul 139-774, Korea

²Department of Biology, Graduate School of Seoul Women's University, Seoul 139-774, Korea

We evaluated the restoration effect by introducing willows as a means of controlling invasions of giant ragweed (*Ambrosia trifida* L.) on a riparian site. Our preliminary survey demonstrated that a problematic exotic species, giant ragweed and the representative riparian species, *Salix koreensis* are in competitive exclusive relationship. We planted willows at 1 m intervals on the bank of the Dongmun stream at Munsan, Paju, in Central Western Korea as an experimental restoration practice. We installed two 50 m × 5 m sized restored and non-restored for this experimental study. The non-restored plots were located on river banks, which were covered with concrete blocks and left in itself without any treatment. The height of willow was measured after each of three consecutive growing seasons and compared with the height of the giant ragweed. Although the height of *Salix gracilistyla* did not achieve the height of the giant ragweed, the height of *S. koreensis* surpassed that of giant ragweed in the third year after introduction. The results were also reflected in the relative light intensity on the herb layer of willow stand, and thereby the relative light intensities of stands, which were dominated by *S. koreensis* or restored by introducing *S. koreensis*, 1.99 ± 0.33 (% , mean \pm SD) and 1.92 ± 0.50 (% , mean \pm SD), respectively were lower than those in the stands treated by *S. gracilistyla*, 3.01 ± 0.43 (% , mean \pm SD). The giant ragweed stands receive full sunlight as there are no any vegetation layers higher than the herb layer formed by the giant ragweed. As the result of Detrended Correspondence analysis ordination based on naturally established vegetation, the stands dominated by willows and giant ragweed showed different species composition between both stands. The species composition of the restoratively treated sites resembled the reference sites more than the non-treated sites. The species diversity (H') of the sites restored by introducing *S. koreensis* and *S. gracilistyla* was higher than the non-restored site dominated by *A. trifida*. On the basis of our results, the restoration of riparian vegetation equipped with integrated features could contribute not only to the control of exotic plants including giant ragweed but also to ensure the diversity and stability of riverine ecosystems.

Key words: *Ambrosia trifida*, control, exotic species, restoration, *Salix*

INTRODUCTION

River floodplains and riparian forests throughout the world have been modified by human development, inducing losses of biological diversity and ecological function and increasing the probability of invasion of invasive alien species (Naiman et al. 1988, Naiman and

Decamps 1990, Petts 1990, National Research Council 1992). The need to develop rivers and their water resources continues to intensify owing to the increasing demands of rapidly growing populations, and the likely increase in per capita resource demands. Some species

© This is an Open Access article distributed under the terms of the Creative Commons Attribution Non-Commercial License (<http://creativecommons.org/licenses/by-nc/3.0/>) which permits unrestricted non-commercial use, distribution, and reproduction in any medium, provided the original work is properly cited.

Received 11 February 2010, Accepted 22 March 2010

*Corresponding Author

E-mail: leecs@swu.ac.kr
Tel: +82-2-970-5666

of flora and fauna have disappeared; exotic species have invaded; the functional characteristics of river systems have been disrupted; and clear reductions in landscape quality and losses of wilderness areas have occurred (Salinas and Guirado 2002).

In Asian countries including Korea where people depend on rice as a food source, most floodplains of rivers were transformed into rice fields in the past. More recently, many rice fields were transformed into urban areas. In such continuing transformation processes, riverside communities have degenerated profoundly or been destroyed by tree cutting, the introduction of exotic species, the diversion and channeling of water for agriculture, and the use of river beds and shores for cultivation or roads. Therefore, riparian landscapes, including a river ecosystem and its surrounding environment, hardly maintain original features (Lee et al. 2005, 2006). In consequence, the riparian zone is known in one of the sites, where the exotic plants appear in the most frequently and vigorously (National Institute of Environmental Research 1995, 1996).

Ambrosia trifida (giant ragweed) is growing along rivers and roads or around agricultural fields (Korean Association for Nature Conservation 1999, Ministry of Environment 2006). In Korea, it was first found near the DMZ, which is located on the central region of the Korean Peninsula. The distributional range of the plant is now expanded from this central region of Korea. The results suggest that this central region played the role of invasion window of the plant in the Korean Peninsula. This plant grows to a stature more than 3 m although it is an herb. This species suppresses other plants in the site that they established, and thereby diminishing biological diversity.

Most studies on the invasive alien species (IAS) carried out in Korea have focused on listing up or describing the distribution range. But the expansion of IAS has already become worldwide problem and the effects of their spread are getting extended (McNeely et al. 2001). This point highlights the urgent need for new approaches to deal with IAS, particularly as a strategy to inhibit new invasion and expansion.

Strategy for invasive alien plant infestations include mowing, herbicide application, grazing, cultivation, burning, shading, flooding, and mechanical barriers (Kim et al. 2006). Giant ragweed grows well in the open spaces without canopy of normal vegetation such as riparian forest. However, the development of a dense canopy of riparian forest can greatly reduce the establishment of giant ragweed. Artificial shading decreased the biomass of exotic plants (Maurer and Zedler 2002, Perry and Gala-

towitsch 2003) and restorative treatment contributed to reduce biomass of an exotic plant (Kim et al. 2006).

This study aims to clarify restoration effect in terms of the control of the exotic species invasion. In order to confirm the provability, we first carried out a preliminary survey by comparing the abundance of *A. trifida* between sites with and without *Salix* spp., dominant species of riparian vegetation in the naturally established vegetation. Furthermore, we practiced a restorative treatment by introducing *Salix* spp. as the representative element of riparian vegetation and clarified the effect in terms of the inhibition of exotic species invasion by comparing the abundance of the exotic species, species composition, and species diversity between the restored and non-restored sites.

MATERIALS AND METHODS

Study area

The field survey and experiment were carried out in the Dongmun stream located in Munsan-eub, Paju-si, Gyunggi province in Central Western Korea. "Eub" and "si" are the administrative units, which correspond to "town" and "city", respectively. Although the bank of the Dongmun stream was covered with concrete blocks, the natural space where willow stand and grassland are interwoven in mosaic pattern, are remained in the rest parts including floodplain remaining in natural state in some areas. Although willow stand and grassland are dominated by *Salix koreensis* and *Phragmites communis*, respectively, an invasive alien plant, *A. trifida* is emerging as a new dominant species as they expand their range rapidly in recent years (Lee et al. 2005, Lee et al. 2007). Experimental restoration was practiced on the bank covered with concrete blocks. Although the old bank, which was constructed several years ago, was covered with *A. trifida* of dense cover, the newly constructed bank is a barren slope where only herbaceous plants appear sparsely.

The Suip stream, which is located in Bangsan-myun, Yanggu-gun, Gangwon province in eastern Korea ("myun" and "gun" are the administrative units, which correspond to "town" and "county", respectively) was selected as a reference stream, as the stream was left to follow natural processes for approximately 50 years after the Korean War.

Methods

This study was carried out for four years from 2002 to

2005. A preliminary vegetation survey for clarifying the relationship between the representative exotic species of this area, *A. trifida* and the typical riparian plants, *Salix* spp. was carried out in 2002 with 20 plots; 10 m × 10 m sized 8 plots for willow dominated stands and 5 m × 5 m sized 12 plots for giant ragweed dominated stands. Restorative treatment by introducing willows to test a hypothesis obtained from the preliminary survey, restoration introducing *Salix* spp. can control exotic plant such as *A. trifida*, was practiced in 2002.

The bank of the Dongmun stream was covered with concrete blocks in order to maintain the physical stability of the stream. Treatment for the control of giant ragweed was practiced by introducing two willow species of *S. koreensis* and *Salix gracilistyla* to holes (10 cm in diameter, 15 cm in depth) on the concrete blocks. Sample plants cultivated in textile pots (10 cm diameter, 15 cm height) with Terra Cotte as a soil improving gel were planted in holes made at 1 m interval on the concrete block used for waterfront protection. Experimental treatments to clarify the restoration effect were performed in two 50 m × 5 m plots of the restored and the non-restored.

Monitoring for the restoratively treated plots was conducted for three years since the current years of restorative treatment. Monitoring was carried out by measuring the height growth of introduced plants for restoration and exotic plant, giant ragweed, and by surveying vegetation structures including species composition and diversity. The height growth of sample plants was measured with tape ruler with mm-level precision.

The vegetation survey was conducted by the relevé method (Barbour et al. 1999). 2 m × 2 m sized quadrats were used for the vegetation survey. All plant species growing in each plot were identified, following Lee (1985), Park (1995), and the Korean Plant Names Index (2003). The survey for monitoring on the restored plots was accomplished in August every year to reduce bias from different survey periods.

The dominance of each species in each plot was estimated by Braun-Blanquet (1964) scale, and each ordinal scale was converted to the median value of the percent cover range in each cover class. The relative coverage (Curtis and McIntosh 1951) determined by multiplying 100 to the fraction of each species cover to the summed cover of all species in each plot was used for comparison and then subjected to Detrended Correspondence Analysis (DCA) (Hill 1979) for ordination with MVSP 3.1 (Kovach 2004). Species diversity was compared using rank-abundance curves, which graphically depict the patterns of species diversity and dominance, and the Shannon

Wiever Diversity Index (H') (Magurran 2003).

Relative light intensity (%) was determined as the percentage of light intensity under vegetation relative to that on the bare ground. The light intensity under vegetation was measured on the herb layer for comparison between the herbaceous and the woody plants-dominated stands. The light intensities were measured with a lux meter (LX-1332; CUSTOM, Tokyo, Japan). Measurements were carried out simultaneously in both sites to reduce variation from measurement time.

RESULTS

Relative light intensity

Relative light intensity in the naturally established willow stand, which was dominated by *S. koreensis*, was 1.99 ± 0.33 (%), (mean ± SD). The willow stands treated restoratively by introducing *S. koreensis* was similar to that in the natural willow stand as 1.92 ± 0.50 (%), (mean ± SD), whereas that in the stands treated with *S. gracilistyla* was higher than that as 3.01 ± 0.43 (%), (mean ± SD) (Fig. 1).

Height of willows and giant ragweed

The heights of giant ragweed measured in August, 2003, 2004, and 2005 were 38.8 ± 25.3 , 265.9 ± 54.7 , and 285.3 (cm, mean ± SD), respectively. The height of *S. koreensis* was lower than that of giant ragweed in the second year but surpassed giant ragweed in the third year (Fig. 2). However, the height of *S. gracilistyla* was lower than that of giant ragweed except for the first year.

Relative coverage of willows and giant ragweed

The relative coverage of *S. koreensis* and *A. trifida* appeared in 20 quadrats arranged randomly in the naturally established vegetation showed antagonistic distribution depending on the site (Fig. 3). Such a distribution means that both species are in competitive exclusive relationship. From the result of this preliminary survey, we could a provability of controlling *A. trifida*, a problematic exotic species by introducing willow as a restorative treatment.

On the basis of data collected from the restoratively treated and non-treated sites, the occurrence of *S. koreensis*, *S. gracilistyla* and *A. trifida* were expressed as Fig. 4. Similarly to the result from the naturally established vegetation, the coverage of *A. trifida* showed the antagonistic distribution to those of *Salix* spp. From this result,

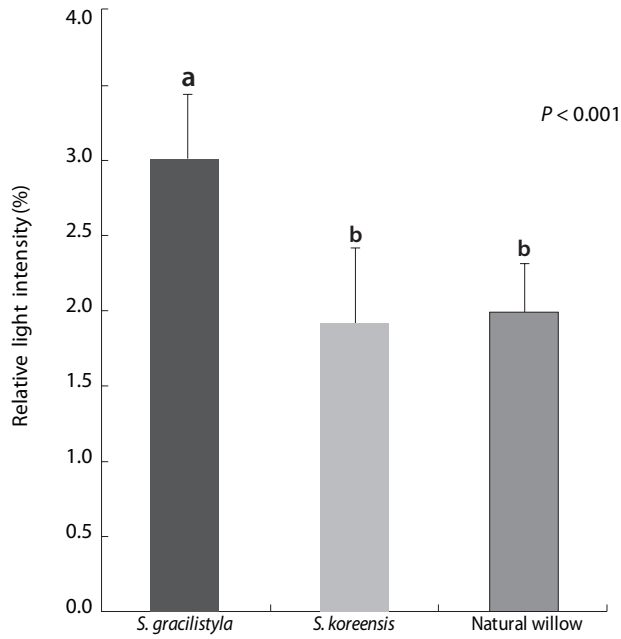


Fig. 1. A comparison of relative light intensity among the restored stands by introducing *Salix gracilistyla* and *Salix koreensis*, respectively and natural willow stands dominated by *S. koreensis*.

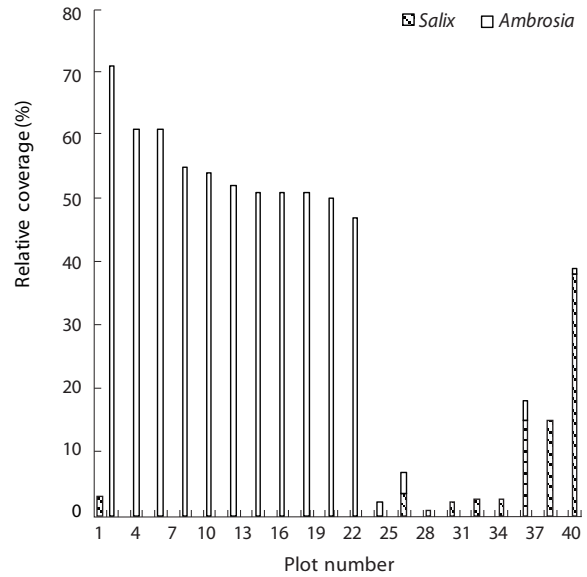


Fig. 3. A comparison of the presence status of two plant species in 20 study plots arranged randomly in stands established naturally in the Dongmun stream, Central Western Korea. *Salix*, *Salix koreensis*; *Ambrosia*, *Ambrosia trifida*.

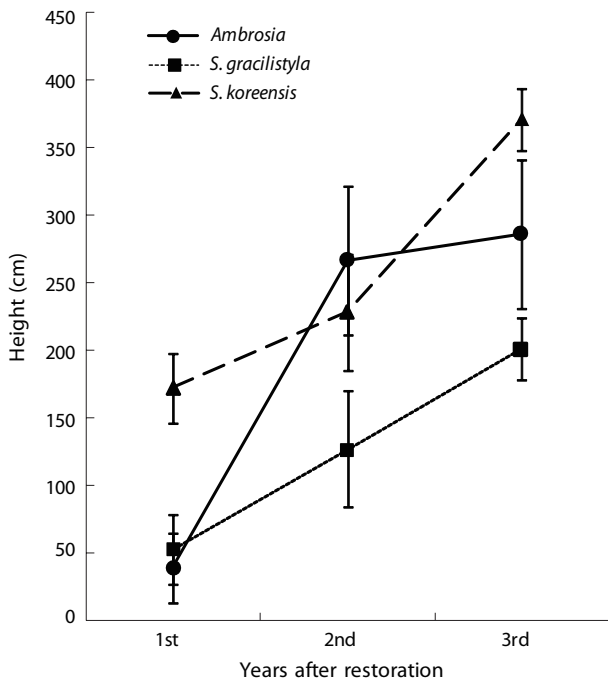


Fig. 2. Changes of height of *Salix gracilistyla* and *Salix koreensis* introduced to restore riparian vegetation, and *Ambrosia trifida*, a dominant exotic plant over years after restorative treatment.

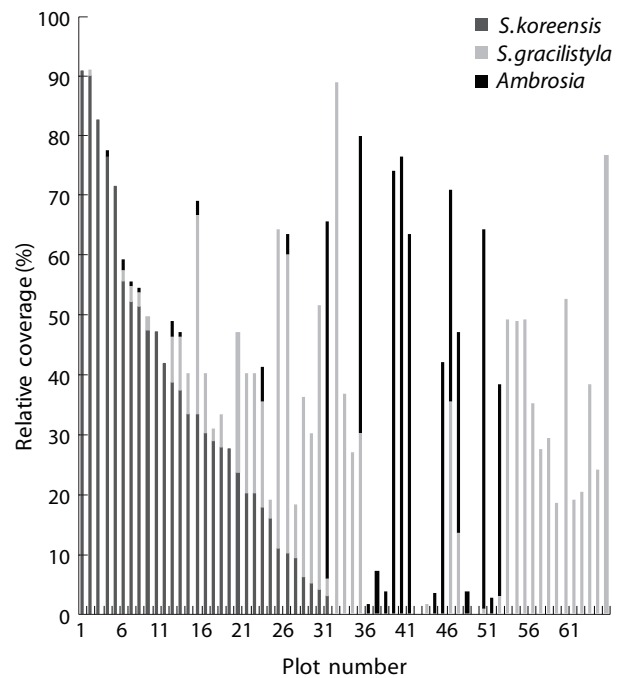


Fig. 4. A comparison of the presence status of three plant species in 25 restored and 39 non-restored plots in the Dongmun stream, Central Western Korea. Restoration was practiced by introducing *Salix koreensis* and *Salix gracilistyla* and therefore plots with *S. koreensis* and/or *S. gracilistyla* mean the restored plot. *Ambrosia*, *Ambrosia trifida*.

we could confirm that the restorative treatment played a role in inhibiting the expansion of the exotic species.

Species composition

As the result of DCA ordination based on the naturally established vegetation, the willow-dominated and the giant ragweed-dominated stands showed clearly segregated distribution with each other, and thereby revealed different species compositions between both stands (Fig. 5).

The result of ordination based on the vegetation data collected from those of the restoratively treated and the non-treated sites, and a reference site, which maintains a relatively healthy state, demonstrated that the treated sites were arranged closer to the reference sites than to the non-treated sites. This result means that restorative treatment caused not only inhibition of expansion of exotic species but also whole change of species composition (Fig. 6).

Species diversity

The species diversity (H') of the sites restored by introducing *S. koreensis* and *S. gracilistyla* was higher than that of the non-restored site dominated by *A. trifida* (Fig. 7). The species diversity of the restored sites showed similar values to the reference site. On the basis of Shannon-Wiener indices, the species diversity of the sites restored by introducing *S. gracilistyla* was higher than that of the reference sites but that of sites restored by introducing *S. koreensis* was lower than that of the reference sites. However, the results based on species rank-dominance curves showed opposite trend (Fig. 7).

DISCUSSION

Impact of giant ragweed

Vegetation dominated by the giant ragweed showed differences in terms of both species composition and diversity from the typical riparian vegetation and that restored by introducing willows as dominant species of riparian vegetation (Figs. 5 and 6). These results can be viewed as evidence that the invasion of giant ragweed generally influences on riparian ecosystems. In reality, the giant ragweed produces rhizomes although it is an annual plant, induces shading by extending many branches, and inhibits the establishment of the other plants by

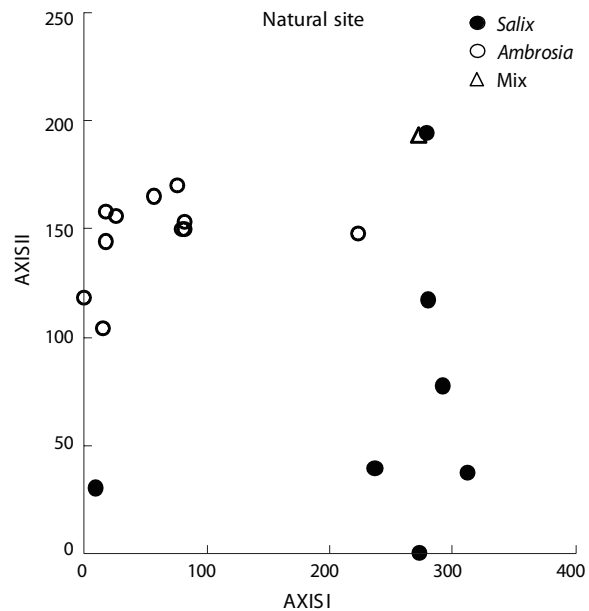


Fig. 5. Stand ordination of vegetation established naturally in the Dongmun stream, Central Western Korea. *Salix*, stands dominated by *S. koreensis*; *Ambrosia*, stands dominated by *A. trifida*; Mix, stands that *S. koreensis* and *A. trifida* co-dominate.

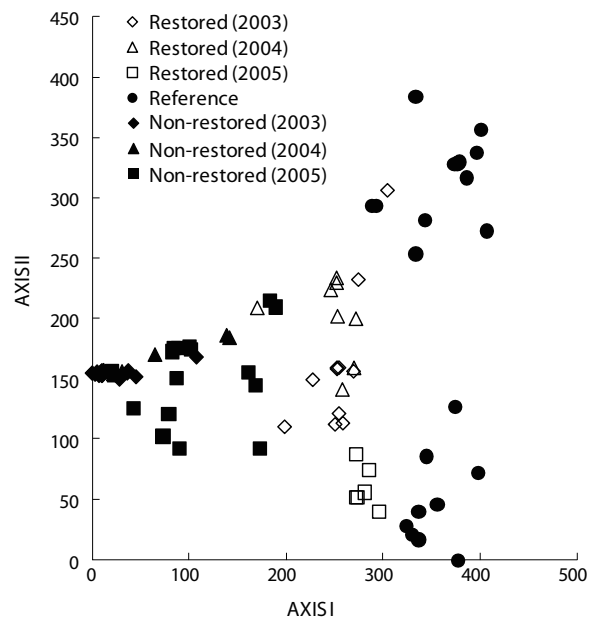


Fig. 6. Stand ordination of the restored, non-restored, and reference stands. Restored (2003), restored stands surveyed in 2003; restored (2004), restored stands surveyed in 2004; restored (2005), restored stands surveyed in 2005; non-restored (2003), non-restored stands surveyed in 2003; non-restored (2004), non-restored stands surveyed in 2004; non-restored (2005), non-restored stands surveyed in 2005. Reference: data collected in the Suip stream, a natural stream, which was left in its natural process for approximately 50 years after the Korean War.

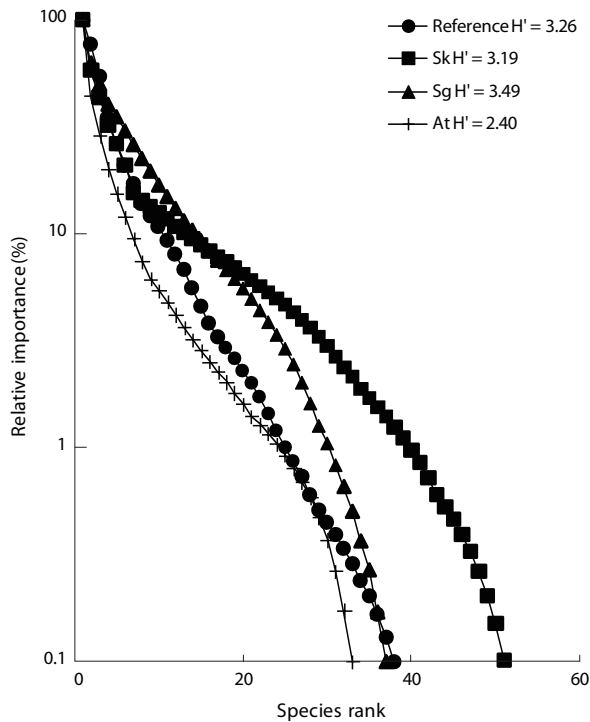


Fig. 7. A comparison of species rank-dominance curves among sites restored by introducing *Salix koreensis* (Sk) and *Salix gracilistyla* (Sg), non-restored sites dominated by *Ambrosia trifida* (At), and reference sites. Reference: data collected in the Suip stream, a natural stream, which was left in its natural process for approximately 50 years after the Korean War.

secreting allelochemic substances (Korean Association for Nature Conservation 1999, Ministry of Environment 2006). Therefore, species diversity of the sites that this plant established was quite low (Fig. 7). In addition, the pollen of the plant acts as severe allergy inducing material and thereby causes trouble for humans. Therefore, Ministry of Environment of Korea manages this plant by designating as one of the wild animals and plants, which disturbs ecosystems (Korean Association for Nature Conservation 1999, Ministry of Environment 2006).

In these regards, it is imperative to restore riparian ecosystems, many of which have deteriorated into relatively poor states due to excessive human use (Baird 1989, Berger 1993). Further, our results, which confirmed a provability that restorative treatment by introducing willows results in significant control of the giant ragweed, have significant meaning.

Competition between giant ragweed and willows

The giant ragweed typically forms dense stands in open areas such as riparian zones. The plant showed an

antagonistic relationship with *S. koreensis* in zones of naturally established riparian vegetation (Fig. 3). This distributional relationship also remained in the restoratively treated site by introducing willows (Fig. 4).

The relative light intensity on the herb layer of *S. koreensis* stands was very low as $1.99 \pm 0.33\%$ and the giant ragweed appeared there extremely sparsely, if at all. The relative light intensity on the herb layer of stands restored by introducing *S. koreensis* showed similar values similar to those of the natural stands, but the restored sites by introducing *S. gracilistyla* showed a little higher than that. The giant ragweed hardly appeared also in the restored sites but the sites restored by introducing *S. koreensis* suppressed the plant more clearly than those by *S. gracilistyla*.

The height of *S. koreensis* grown for three years after introduction was higher than that of the giant ragweed, and thus, could effectively control the plant. However, the height of *S. gracilistyla* did not grow to the height of the giant ragweed, an herbaceous plant, and thus may difficult to control the plant. Therefore, restoration by introducing trees such as *S. koreensis* rather than shrubs such as *S. gracilistyla* would be desirable for the effective control of the giant ragweed.

Willow species were shown in dominant species in the majority of riparian zones in Korea (Lee CS unpublished). Hence, the results of our study point to a successful technique for the management of giant ragweed in riparian sites where willows and giant ragweed co-exist.

Restoration as biological control

Invasive species provide a serious challenge to environmental managers because of their explosive growth (Kangas 2004, Correll 2005). The giant ragweed displays vigorous growth and prolific seed production, which facilitates the spread of this species, particularly along river and stream sides, where significant barriers to dispersal may exist. Moreover, the giant ragweed can reach a height of approximately 5 m, even though it is a kind of herbaceous plants (Korean Association for Nature Conservation 1999, Ministry of Environment 2006). Thus, the control of giant ragweed in natural areas has been fairly difficult to achieve. Even though so, our results indicate that restoration by introducing *S. koreensis* can effectively control the giant ragweed within three growing seasons. Our results suggest that planting of the willow can help restoring riparian areas that have been overtaken by giant ragweed. In addition, willows can function in nurse crop for other understory plants by ameliorating high

light, temperature, and soil moisture conditions (Dulohery et al. 2000, McLeod et al. 2001). Willows may benefit the riparian community within and near willows by virtue of such functions. Lower coverage of giant ragweed may continue to increase abundance of other species. The decline in the dominance of giant ragweed owing to willow shading may serve to increase plant diversity in this restored riparian ecosystem. Other riparian woody species may also have a possibility for the control of the giant ragweed by competition. More long-term studies will be necessary to determine whether the willows favor other riparian species over the giant ragweed and examine whether other woody species except willows are effective to manage the giant ragweed

CONCLUSION

Vegetation dominated by giant ragweed dominated showed different species composition and lower species diversity compared with the typical and the restored riparian vegetation. The coverage of invasive alien plants including the giant ragweed was reduced significantly by a restoration introducing willows. The relative light intensity on the herb layer of *S. koreensis* stands was quite low and the giant ragweed hardly appeared there. The relative light intensity on herb layer of stands restored by introducing *S. koreensis* showed values similar to those of the natural stands, but the sites restored by introducing *S. gracilistyla* showed values slightly higher than that. Giant ragweed hardly appeared also in the restored sites but the sites restored by introducing *S. koreensis* suppressed the plant more clearly than the sites restored by *S. gracilistyla*. The height of *S. koreensis* grown for three years after introduction was higher than that of the giant ragweed, and thus could effectively control the plant. However, the height of *S. gracilistyla* was lower than that of the giant ragweed, and thus introduction of *S. gracilistyla* may not be a good method for the control the plant. On the basis of our results, we have concluded that the restoration by introducing trees such as *S. koreensis* rather than shrubs such as *S. gracilistyla* would be desirable method for the control of the giant ragweed.

ACKNOWLEDGMENTS

This work was supported by a grant (Code # '06 CTIP B-01) from the Construction Technology Innovation Program (CTIP) funded by the Ministry of Land, Transport

and Maritime Affairs of Korean government.

LITERATURE CITED

- Baird K. 1989. High quality restoration of riparian ecosystems. *Restor Manage Notes* 7: 60-64.
- Barbour MG, Burk JH, Pitts WD, Gilliam FS, Schwartz MW. 1999. *Terrestrial Plant Ecology*. Addison Wesley Longman, New York.
- Berger JJ. 1993. Ecological restoration and nonindigenous plant species: a review. *Restor Ecol* 1: 74-82.
- Braun-Blanquet J. 1964. *Pflanzensoziologie: Grundze der Vegetationskunde*. Springer-Verlag, Wien.
- Correll DL. 2005. Principles of planning and establishment of buffer zones. *Ecol Eng* 24: 433-439.
- Curtis JT, McIntosh RP. 1951. An upland forest continuum in the prairie-forest border region of Wisconsin. *Ecology* 32: 476-496.
- Dulohery CJ, Kolka RK, McKevelin MR. 2000. Effects of a willow overstory on planted seedlings in a bottomland restoration. *Ecol Eng* 15(Suppl 1): S57-S66.
- Hill MO. 1979. DECORANA: a FORTRAN Program for Detrended Correspondence Analysis and Reciprocal Averaging. Cornell University, Ithaca, New York.
- Kangas PC. 2004. *Ecological Engineering: Principles and Practice*. Lewis Publisher, Boca Raton, FL.
- Kim KD, Ewing K, Giblin DE. 2006. Controlling *Phalaris arundinacea* (reed canarygrass) with live willow stakes: a density-dependent response. *Ecol Eng* 27: 219-227.
- Korean Association for Nature Conservation. 1999. Distribution and ecology of harmful exotic animals and plants designated by Ministry of Environment (in Gangwondo). Korean Association for Nature Conservation, Seoul.
- Korean Plant Names Index. 2003. <http://www.koreaplants.go.kr:9090/>. Accessed 17 January 2010.
- Kovach W. 2004. *Muti-Variate Statistical Package (MVSP)*. Kovach Computing Services, Pentraeth.
- Lee CS, Cho YC, Shin HC, Lee SM, Cho HJ. 2007. Effects of partial habitat restoration by a method suitable for riverine environments in Korea. *J Ecol Field Biol* 30: 171-177.
- Lee CS, Moon JS, Woo HS, Ahn HG, Cho GH, Bae YS, Byun HG. 2006. An analysis on landscape structure and biodiversity of the Bokha stream as a model to restore the degraded urban stream. *J Ecol Field Biol* 29: 113-124.
- Lee CS, Cho YC, Shin HC, Moon JS, Lee BC, Bae YS, Byun HG, Yi H. 2005. Ecological response of streams in Korea under different management regimes. *Water Eng Res Int J KWRA* 6: 131-147.

- Lee CS, Moon JS, Woo HS, Ahn HG, Cho GH, Bae YS, Byun HG. 2006. An analysis on landscape structure and biodiversity of the Bokha stream as a model to restore the degraded urban stream. *J Ecol Field Biol* 29:113-124.
- Lee CS, Cho YC, Shin HC, Lee SM, Cho HJ. 2007. Effects of partial habitat restoration by a method suitable for riverine environments in Korea. *J Ecol Field Biol* 30: 171-177.
- Lee TB 1985. *Illustrated Flora of Korea*. Hyangmoonsa, Seoul. (in Korean)
- Magurran AE. 2003. *Measuring Biological Diversity*. Blackwell Publishing, New York.
- Maurer DA, Zedler JB. 2002. Differential invasion of a wetland grass explained by tests of nutrients and light availability on establishment and clonal growth. *Oecologia* 131: 279-288.
- McLeod KW, Reed MR, Nelson EA. 2001. Influence of a willow canopy on tree seedling establishment for wetland restoration. *Wetlands* 21: 395-402.
- McNeely JA, Mooney HA, Naville LE, Schei P, Waage JK. 2001. *Global Strategy on Invasive Alien Species*. IUCN, Gland and Cambridge.
- Ministry of Environment. 2006. *Construction of Monitoring System and Study on Management Plan on Ecosystem Disturbing Species*. Ministry of Environment, Gwacheon.
- Naiman RJ, Decamps H. 1990. *The Ecology and Management of Aquatic-Terrestrial Ecotones*. Parthenon Publishing, Carnforth.
- Naiman RJ, Johnston CA, Kelley JC. 1988. Alteration of North American streams by beaver. *Bioscience* 38: 753-762.
- National Institute of Environmental Research. 1995. *Survey for Ecological Impact by Naturalized Organisms (I)*. National Institute of Environmental Research, Seoul.
- National Institute of Environmental Research. 1996. *Survey for Ecological Impact by Naturalized Organisms (II)*. National Institute of Environmental Research, Seoul.
- National Research Council. 1992. *Restoration of Aquatic Ecosystems: Science, Technology, and Public Policy*. National Academy Press, Washington, DC.
- Park SH. 1995. *Colored Illustrations of Naturalized Plants of Korea*. Ilchokak, Seoul. (in Korean)
- Perry LG, Galatowitsch SM. 2003. A test of two annual cover crops for controlling *Phalaris arundinacea* invasion in restored sedge meadow wetlands. *Restor Ecol* 11: 297-307.
- Petts GE. 1990. Forested river corridors: a lost resource? In: *Water Engineering and Landscape* (Cosgrove D, Petts GE, eds). Belhaven Press, London, pp 12-34.
- Salinas MJ, Guirado J. 2002. Riparian plant restoration in summer-dry riverbeds of Southeastern Spain. *Restor Ecol* 10: 695-702.