



갈색무늬병(초기병징)

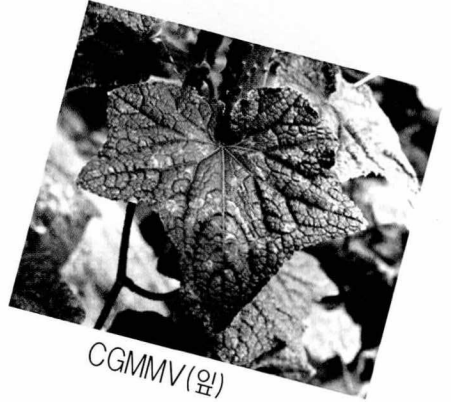


갈색무늬병(후기병징)

화보

오이 주요병해

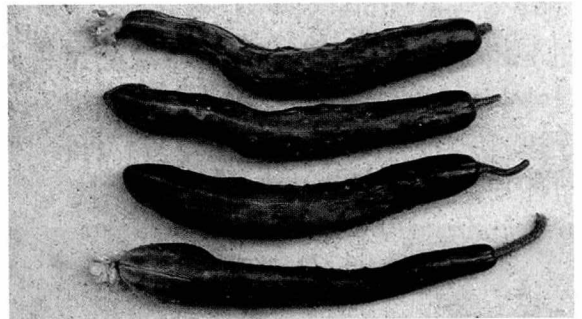
- 농업과학기술원 농업생물부 식물병리과
- 전라남도농업기술원 채소연구시험장



CGMMV(잎)



CGMMV(열매)



ZYMV(열매)



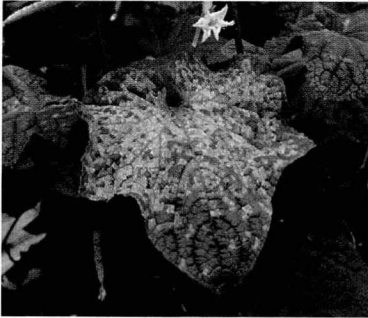
ZYMV(잎)



세균성모무늬병(잎)



세균성모무늬병(열매)



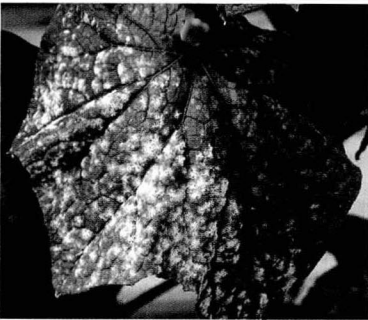
노균병



검은별무늬병(잎)



검은별무늬병(열매)



흰가루병



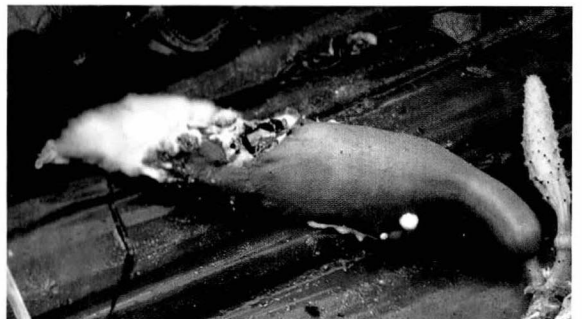
흰빛곰팡이병(잎)



흰빛곰팡이병(열매)



균핵병(줄기)



균핵병(열매)