

# A vestibular Approach to Hard and Soft Tissue Graft for Esthetic Zone

(A New Approach to Bone Graft for Esthetic Zone)

M.H.LEE(이명호), E.J.PARK(박은주), J.H.AN(안지현)

Myung In Dental clinic,  
Jeonju-si, Jeonbuk, Korea.

In case of most bone defect situation, immediate provisionalization would not provide predictable outcome. Therefore other approaches are recommended, which are the bone and soft tissue graft surgery performed in advance to the placement of implant fixture or simultaneous approach of implant and graft with submerged type surgery. However these approaches would make the operators complicate to manage the soft tissue. It is not easy to preserve the existing soft tissue when any kind of surgery is intervened.

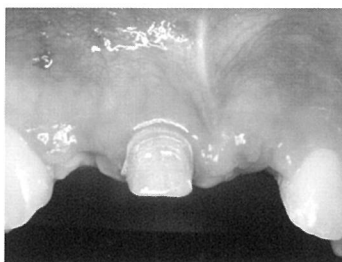


Fig1. Labial view



Fig2. Occlusal view



Fig3. Vestibular horizontal incision

In this presentation, the vestibular approach at the labial mucosal level is demonstrated to preserve and improve the existing soft tissue. Bone graft and connective tissue graft were done with the vestibular approach for implant placement. Implant provisionalization were performed at the same time. In short time of observation, clinical outcomes are predictable in esthetic point of view. Further observation will be done to evaluate the value of this approach.



Fig4. Dehiscence defect



Fig5. Xive D 3,8/L 18 Implant insertion

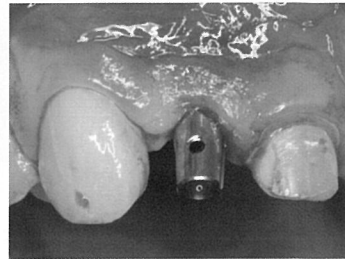


Fig6. Post connection

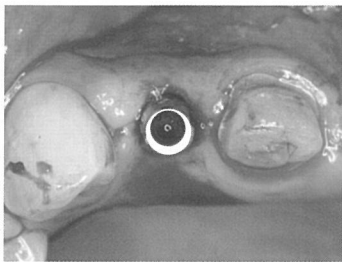


Fig7. Occlusal view with post



Fig8. Decortication

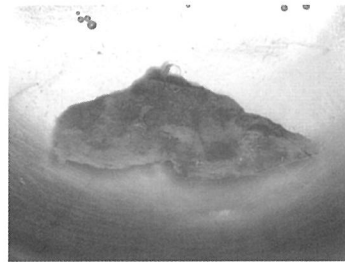


Fig9. Connective tissue with poor platelet (PPP)

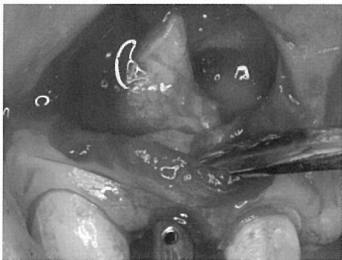


Fig10. Connective tissue graft using absorbable suture material

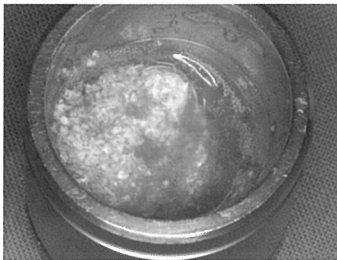


Fig11. PRP(platelet rich plasma). Particulate auto bone, Bio-oss, Thrombin, calcium chloride.

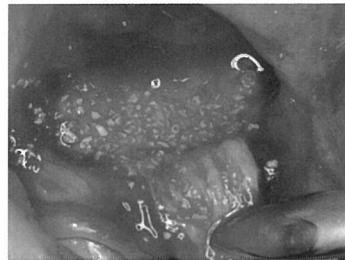


Fig12. Bone graft



Fig13. PPP(platelet poor plasma) gelation insertion



Fig14. Suture

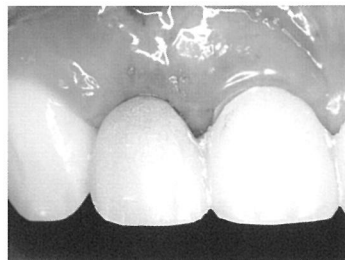


Fig15. Temporary crown restoration on surgery

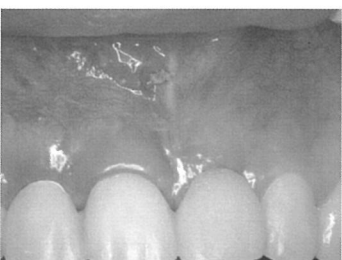


Fig16. 2 weeks after surgery