

SDP : STRUCTURAL DESIGN PROCESSOR



1.

가

< 1> 5 ,  
4,600 ,  
가 가

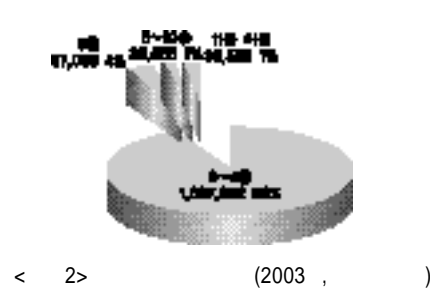
< 2> 가  
(2003 ) 1 419 가  
2 5 97% 2005  
,1-2

2005 7 1 3 ,  
1,000<sup>2</sup> 가 ,  
6 가

피해지역 즉자카르타서 진앙까지 겨우 25km

## 내진 설계 안 된 가옥들 “와르르”

... (text continues) ...



< 1>

/	/
194	232
31	7

< 1> 2005 5



, < 1 > 2005

SDP

가

가

가

가

SDP

/

가

가

2.

SDP

가

가

SDP(Structural Design Processor)

SDP

가

< 3 > 18 SDP

SDP

SDP

SDP(Structural Design Processor)

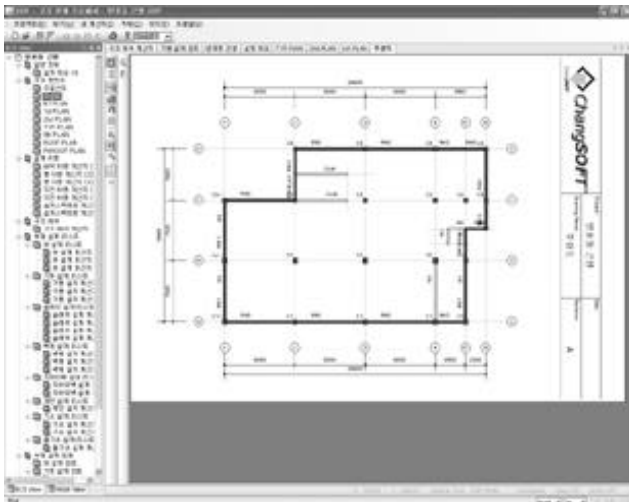
.SDP



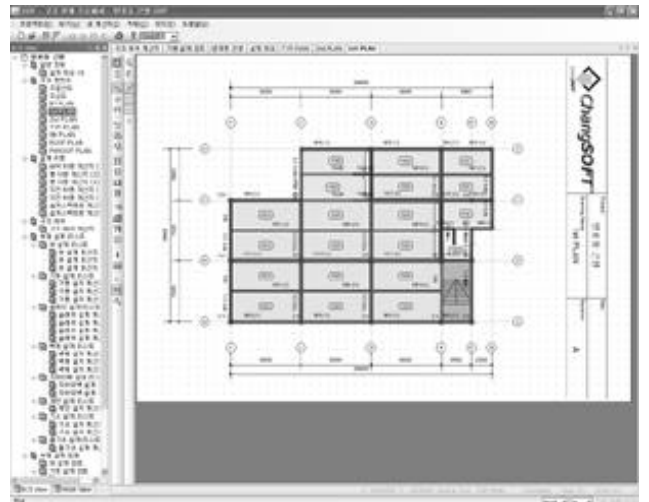
< 3 >



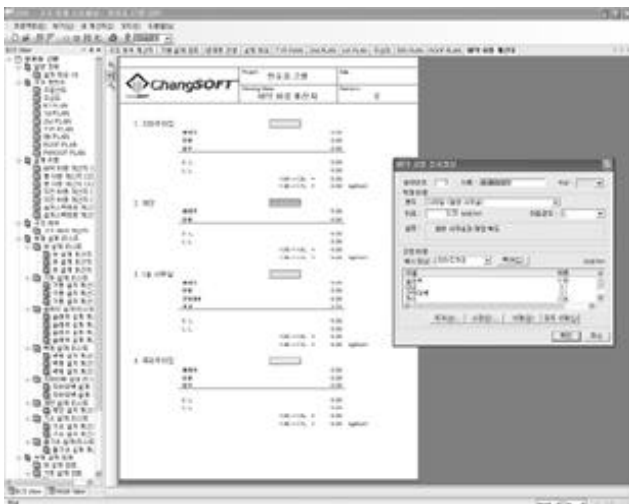
< 4 >



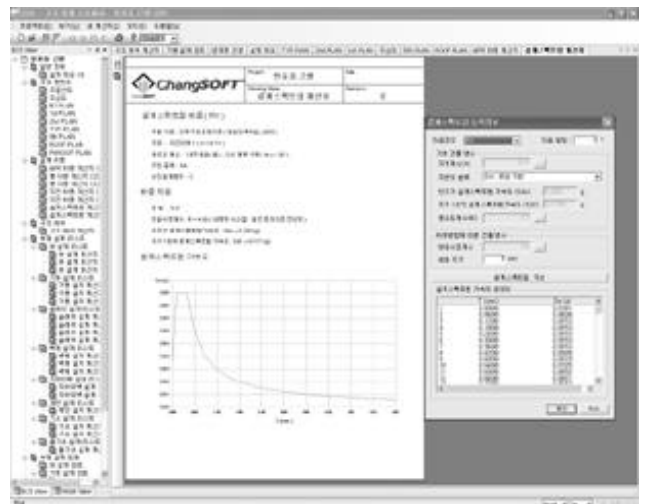
< 5>



< 6>



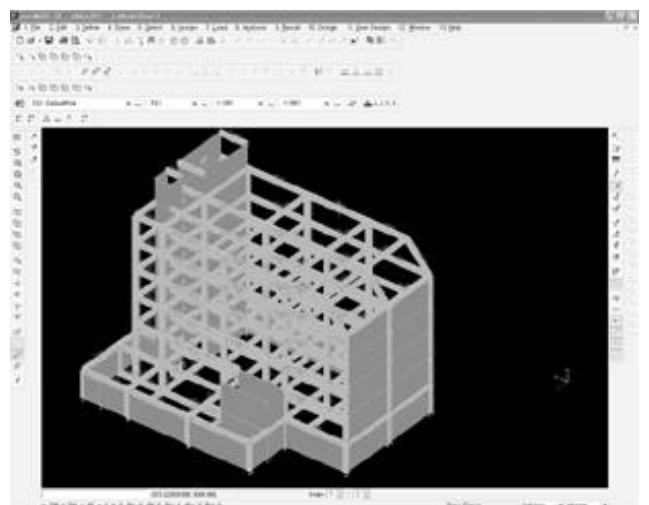
< 7>



< 8>

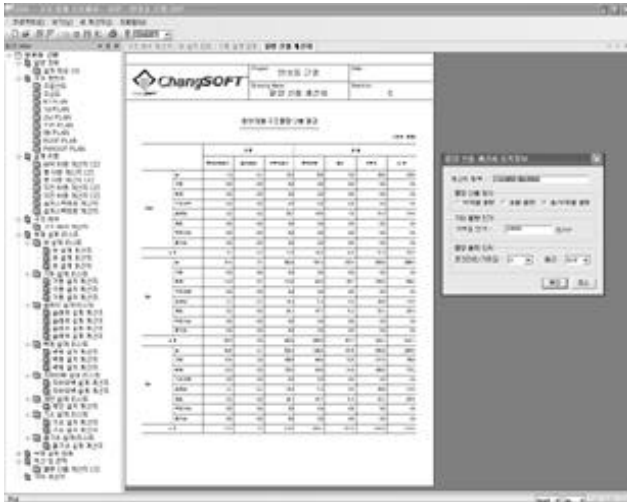


< 9>

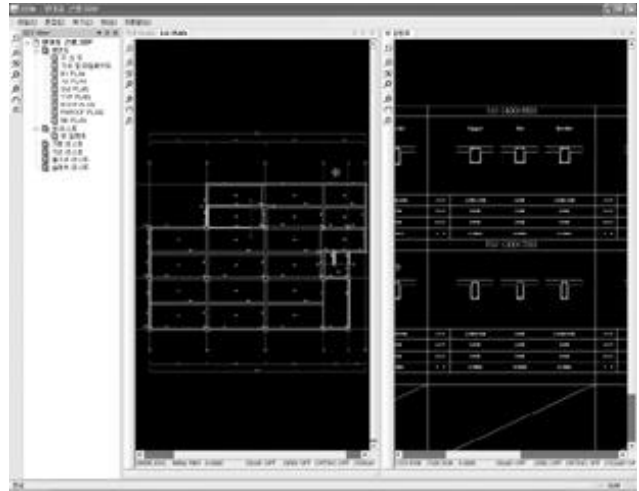


< 10>

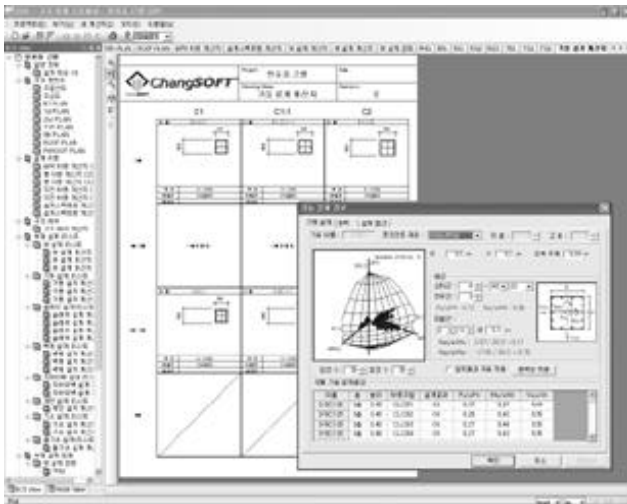
(NeoMAX 3D)



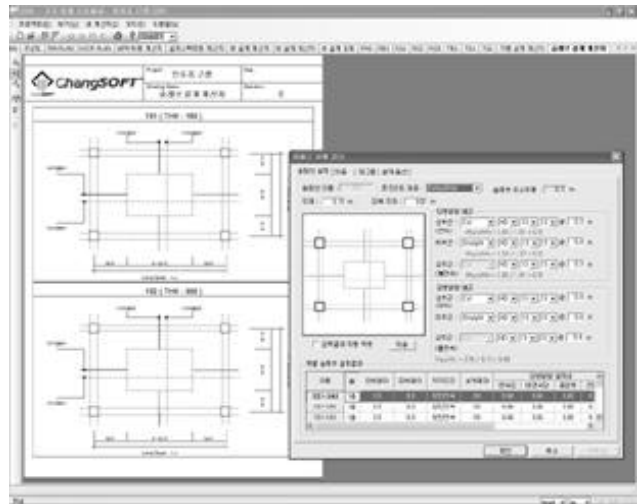
< 11>



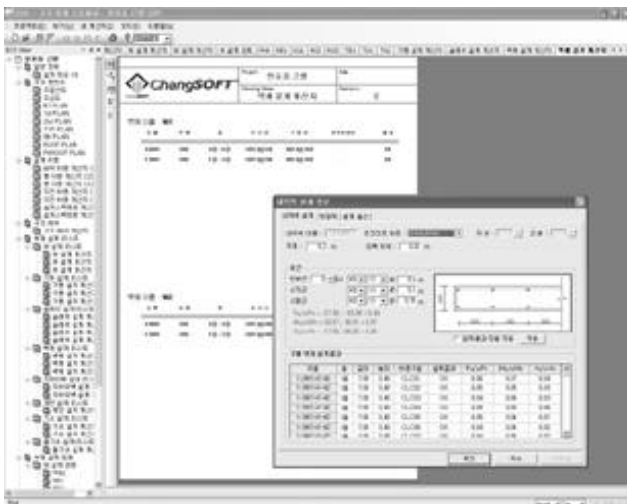
< 12>



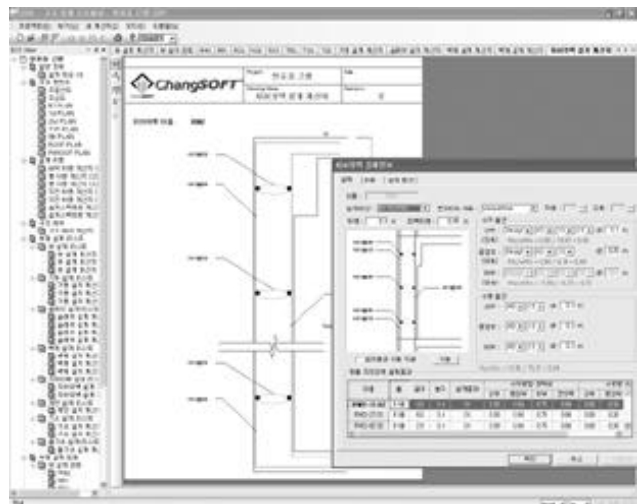
< 13>



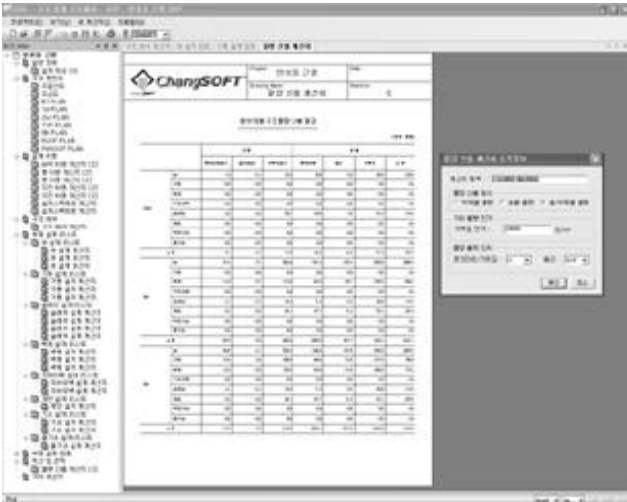
< 14>



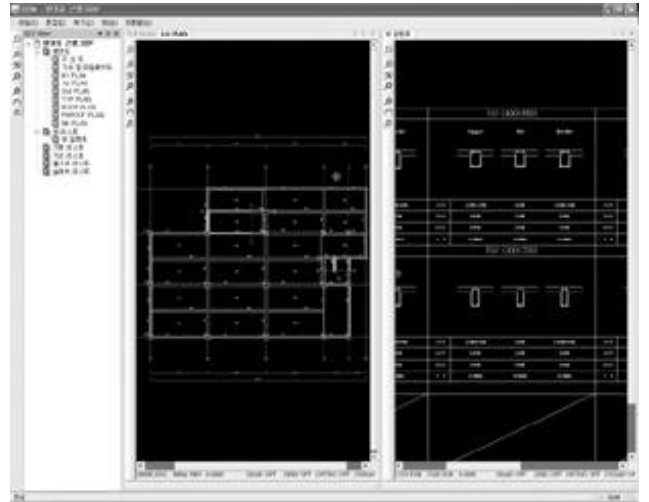
< 15>



< 16>



< 17>



< 18> SDM(Structural Drawing Master)

3-18 SDP

가

SDP 가 가 BLACK-BOX

SDP

가

SDP

가가

.SDP

NeoMAX 3D, MIDAS/Gen, SAP2000

가

SDP

SDP

SDP2000

가

가

SDP

CD

SDP

가가

Object Oriented Method

C++

가

SDP

가가



4)

SDP

### 3. SDP

15 2 4

2

SDP

4

( , , ), ,

SDP

가

가 .<

1)

7>

가 ,< 3>

5)

( , , )

(revision)

가

가

< 3>

SDP

가

.< 8>

가

2)

( , , )

6)

3)

.SDP

가가

.<

9>

SDP

SDP

.< 5>

.< 10> NeoMAX 3D

7)

< 11>

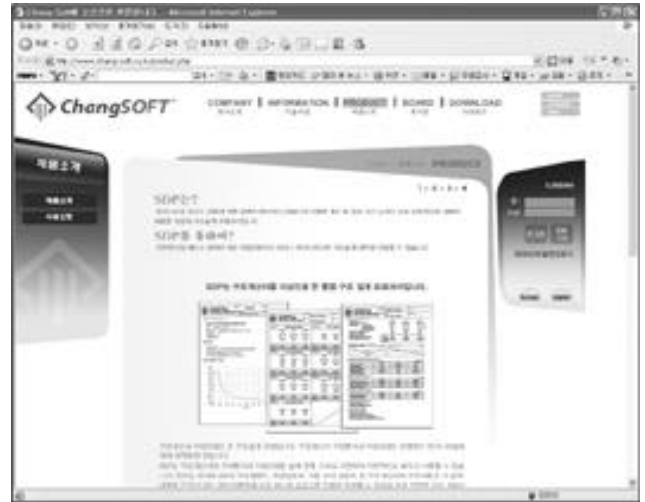
,SDP

(G1,G2,

C1,C2,W1,W2 )

< 12>

< 13-16>



< 19> ChangSOFT

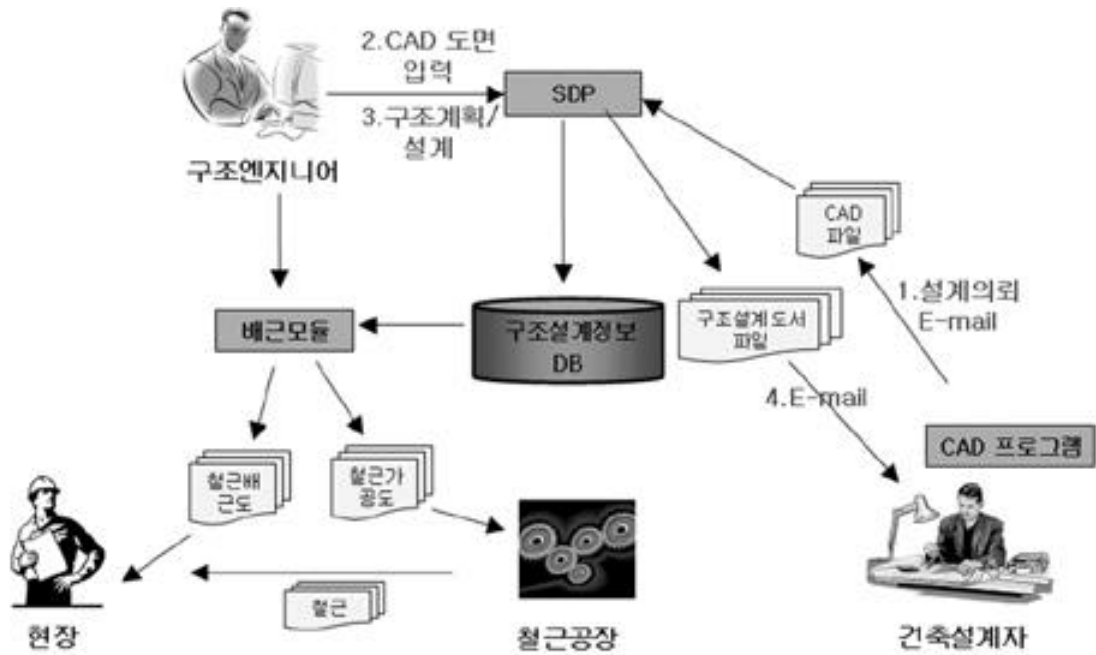
(www.chang-soft.co.kr)

8)

< 17>

18>

가  
가



< 20> SDP



4.

3 SDP 1 ,  
5 .90%  
4-5 , SDP가

SDP 가  
가 SDP  
가 가  
SDP

ASP(Application Service Provider)  
SDP ChangSOFT  
( < 19> , www.chang-soft.co.kr) SDP  
ChangSOFT 가  
SDP SDP  
SDP가

1  
SDP 20 SDP  
가 CAD  
,SDP CAD  
가 SDP , ,

SDP SDP  
가  
가

5.

SDP ,