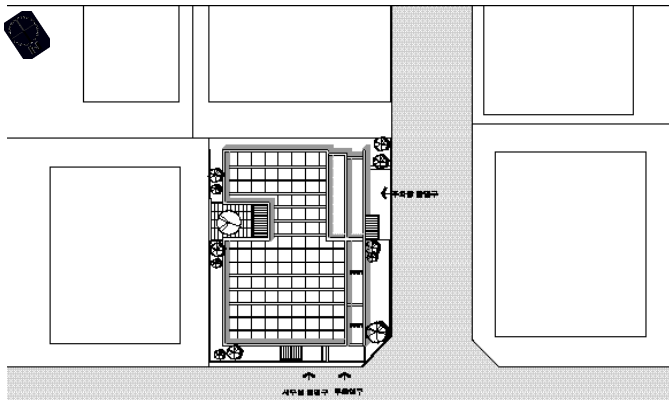


Bangbae Hanultari



879-18

208.95㎡
124.92㎡
606.66㎡
59.78%
225.27%

가
1, 4

, T24, T8
, 가, 가, 가 / ,
()



Location 879-18, Bangbae-dong, Seocho-gu, Seoul, Korea
Site area 208.95㎡
Bldg area 124.92㎡
Gross floor area 606.66㎡
Bldg coverage ratio 59.78%
Gross floor ratio 225.27%
Structure S.R.C
Bldg. Scale B1, F4



project

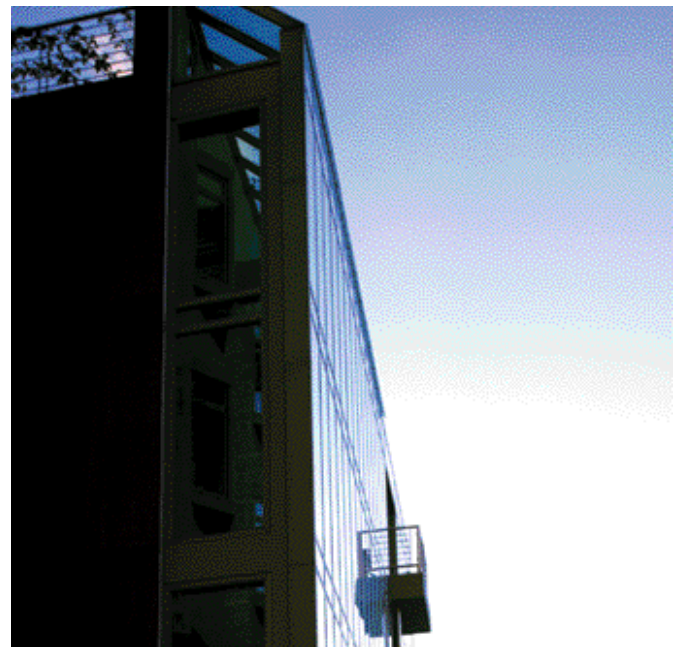
가
가
가 ,
가

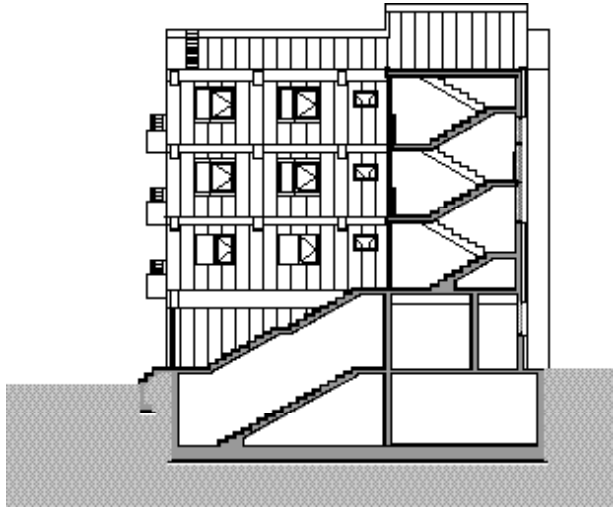
가 ,

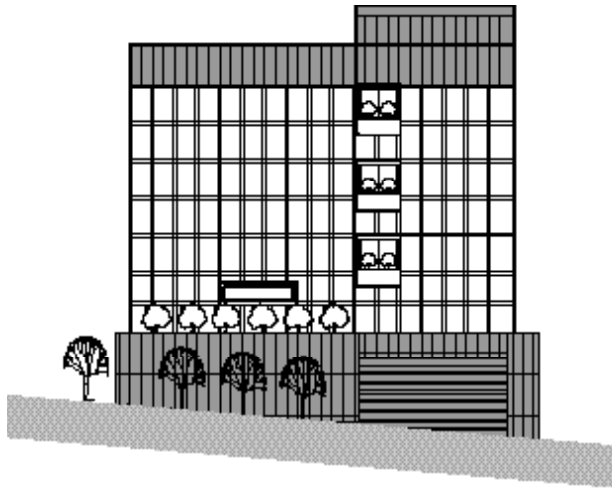
가 ,

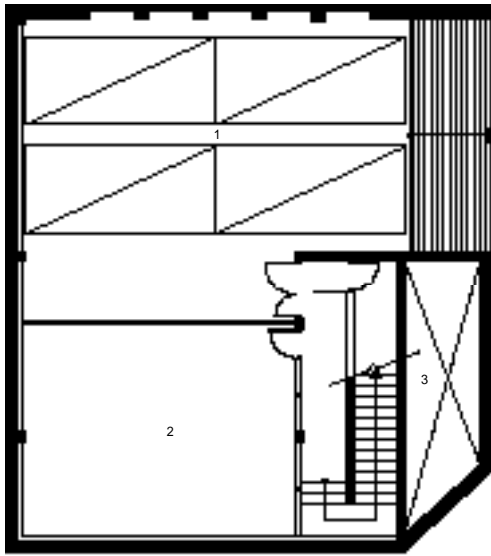
.가

.圖



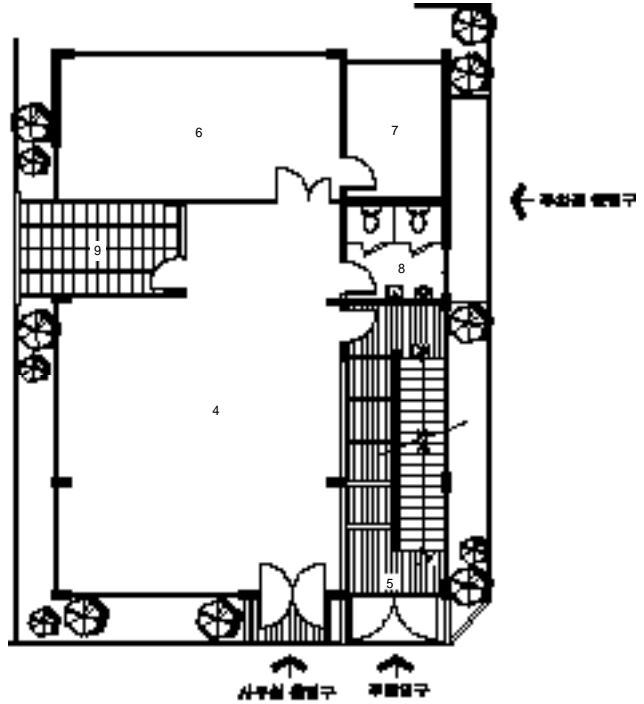






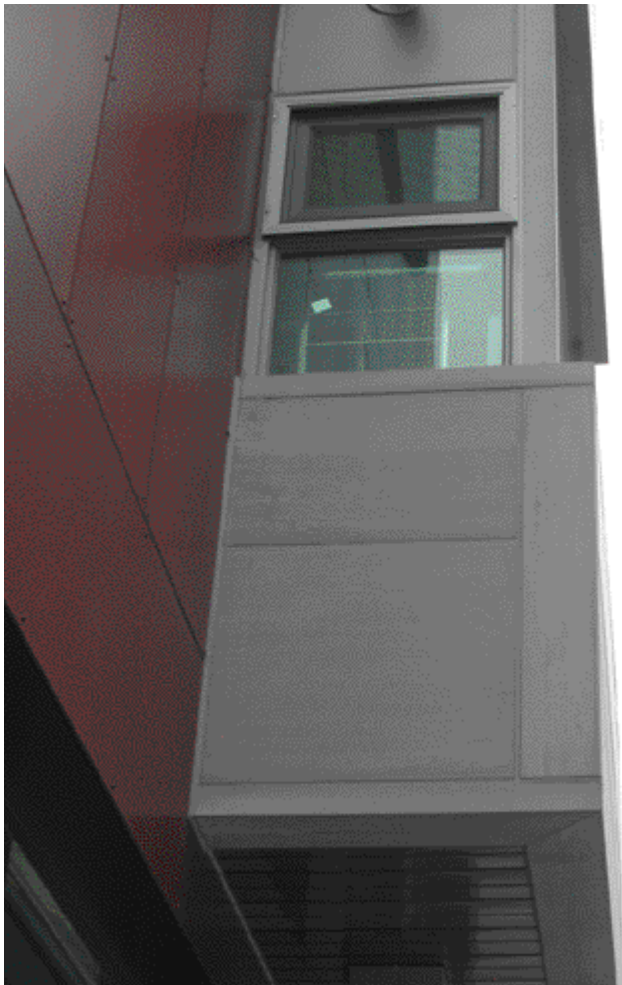
0 1 1.5 3m

1



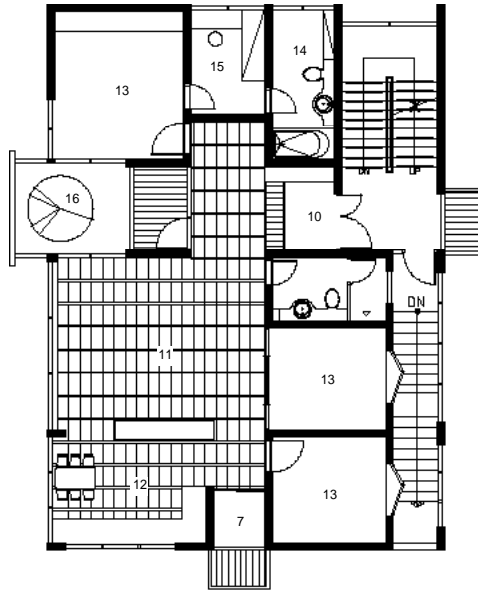
사무실 출입구 주요출입구

1

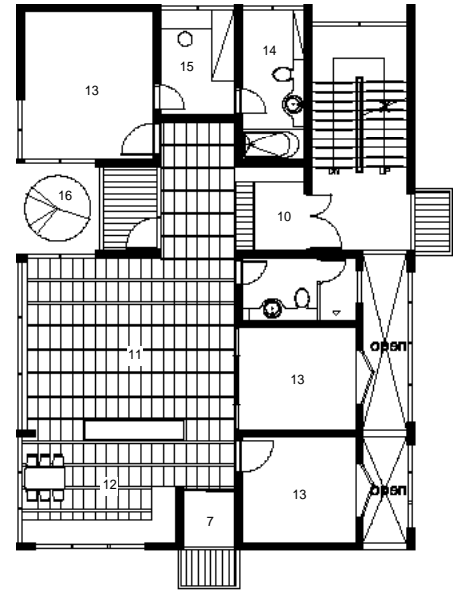


- 01_
- 02_
- 03_
- 04_
- 05_
- 06_
- 07_
- 08_
- 09_
- 10_
- 11_
- 12_
- 13_
- 14_
- 15_
- 16_

가



2



3-4

- | | | | |
|---|---|---|---|
| 1 | 2 | 3 | 4 |
|---|---|---|---|
- 1.
 - 2.
 - 3.
 - 4.

