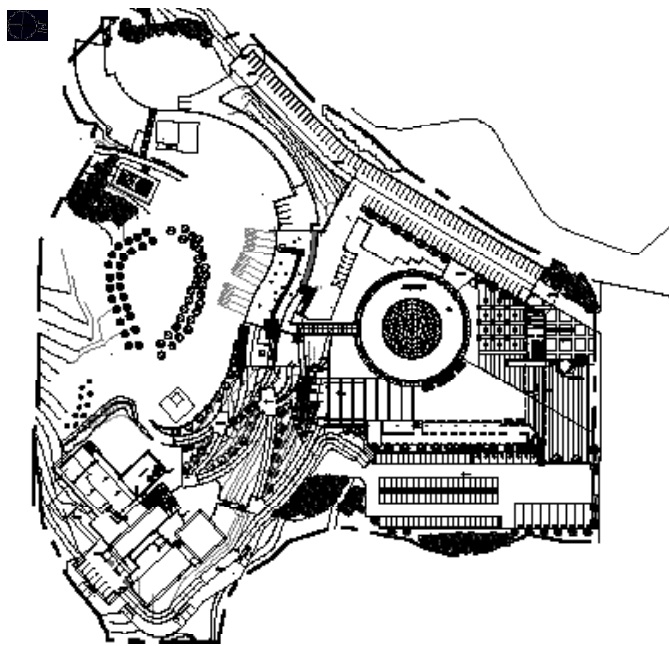


Clayarch Gimhae Museum

<2006 / 2006 5 >



0 5 10 20m

3

42,162.0㎡
4,831.9㎡
8,824.7㎡
11.46%
15.90%

1 , 3

(American White oak),
(가)
, THK16mm

ENC,

2001.6 ~ 2005.12
2003.01 ~ 2006.03



Location 3 Songjeong-ri, Jillye-myeon, Gimhae-si, Gyeongsangnam-do, Korea

Site area 42,162.00㎡

Bldg. area 4,831.97㎡

Gross floor area 8,824.77㎡

Bldg. coverage ratio 11.46 %

Gross floor ratio 15.90 %

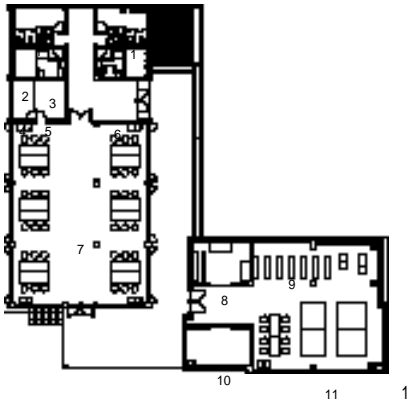
Structure RC

Bldg. Scale B1, F3

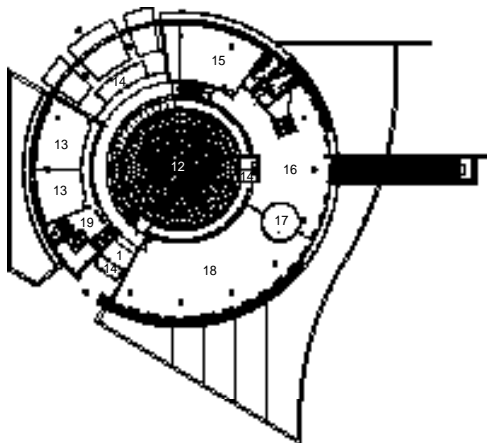
Design period 2001.6 ~ 2005.12

Construction period 2003.01 ~ 2006.03





- | | |
|-------|-----------|
| 01_ | 14_ |
| 02_ | 15_ |
| 03_ | 16_ |
| 04_ | 17_ |
| 05_ | 18_ |
| 06_ | 19_ |
| 07_ | 20_ |
| 08_ / | 21_ |
| 09_ | 22_ ELVE. |
| 10_ | 23_ 가 |
| 11_ 가 | 24_ |
| 12_ | 25_ |
| 13_ | |



0 10 20m

