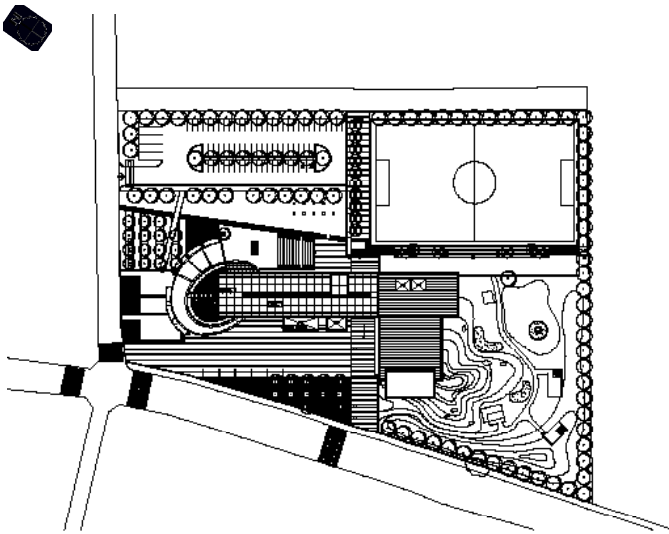


Cheorwon Culture & Welfare Center

<2006

>



693

29,940.00㎡
3,233.45㎡
7,240.75㎡
2,479㎡
10.80%
17.88%
76
1 , 4
23.80m

()



Location 693, Hwaji-ri, Cheorwon-eup, Cheorwon-gun, Gangwon-do, Korea

Site area 29,940.00㎡
Bldg area 3,233.45㎡
Gross floor area 7,240.75㎡
Bldg coverage ratio 10.80%
Gross floor ratio 17.88%
Structure S.R.C
Bldg. Scale B1, F4



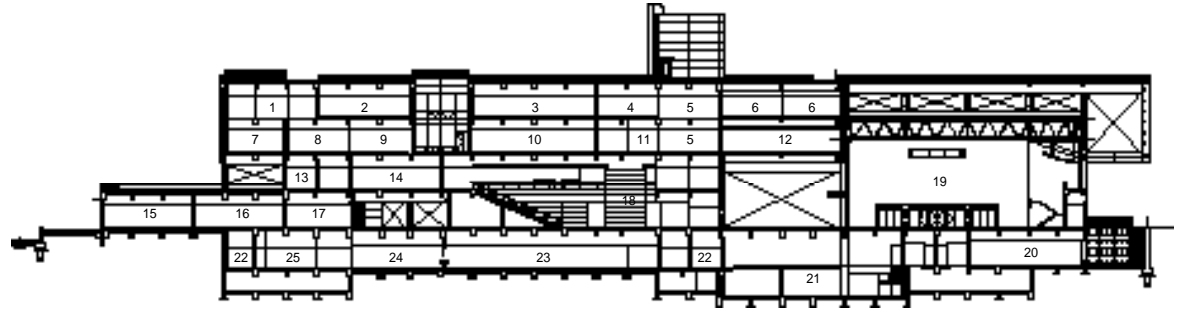


가 3
 , 가 .
 .
 가 가 가 .
 , 가 3 , 3
 .
 가 3 .
 , ,
 ()
 ()
 , “
 ?” “
 가 ”
 ,
 , 3 가 가
 , 3 가
 . 3 가
 가 .
 , .
 . 圖



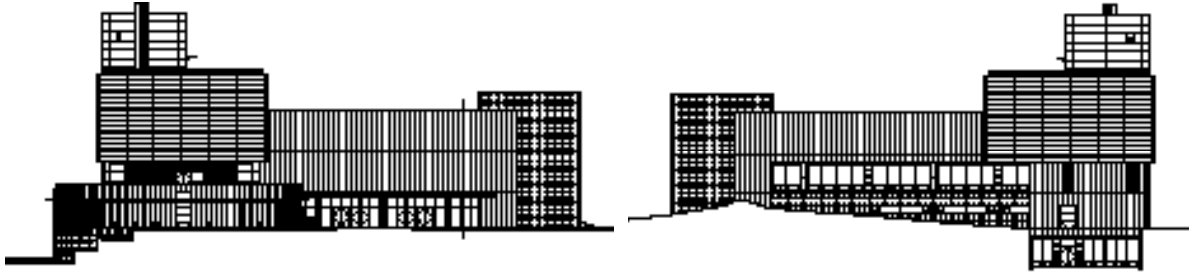
- 01.
- 02.
- 03.
- 04.
- 05.
- 06.
- 07.
- 08.
- 09.
- 10.
- 11.
- 12.
- 13.
- 14.
- 15.
- 16.
- 17.
- 18.
- 19.
- 20.
- 21.
- 22.
- 23.
- 24.
- 25.

()



- 1.
 - 2.
 - 3.
 - 4.
 - 5.
 - 6.
- 가

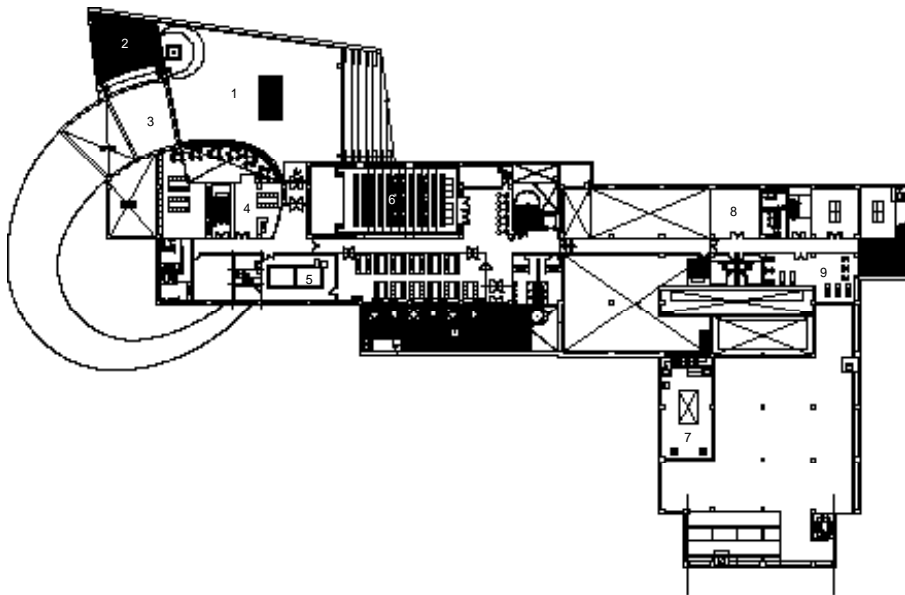
1	3	4
2	5	6





1	2
3	4

- 1_
- 2_
- 3_
- 4_



1

01
02
03
04
05
06
07
08
09
10
11
12
13
14
15
16
17
18
19
20
21
22
23
24
25
26
27
28
29
30

