

Ascend : Mookbangri Residence

(2006 06)

O.C.A



0 10 20 30m

284-4, 21-10

1,586㎡

194.09㎡

251.1㎡

12.24%

13.6%

1, 2

, ,

, T24 ,

(project designer),

()

()

(:)

2004. 5~10

2004. 11~2005. 7



Location 284-4, Mukbang-ri, Naesu-eup, Cheongwon-gun, Chungcheongbuk-do, Korea

Site area 1,586㎡

Bldg area 194.09㎡

Gross floor area 251.1㎡

Bldg. coverage ratio 12.24%

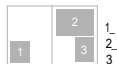
Gross floor ratio 15.90%

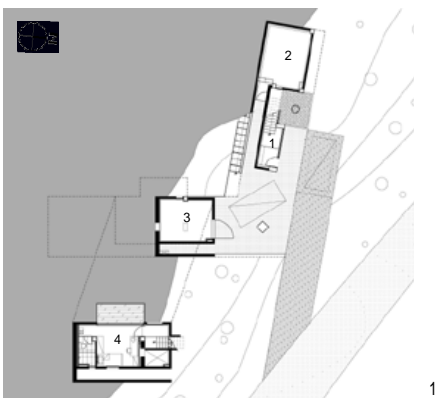
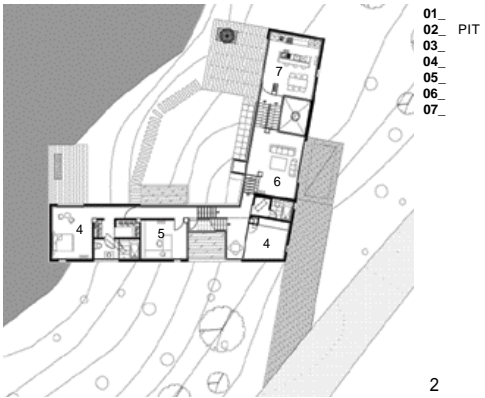
Structure R.C

Bldg. Scale B1, F2

Design period 2004. 5~10

Construction period 2004. 11~2005. 7





0 12.4m
 []

