

BPCR

Bonded Partial Ceramic Restoration: A conservative approach

맹명호
가은치과병원 대표 원장

▣ Introduction

Bonded ceramic restorations used for enhancing dental esthetics may be classified into the following categories; ceramic veneers, ceramic inlays/onlays, and all ceramic crowns. These ceramic materials exhibit far superior properties in terms of shade and luster absence of polymerization shrinkage to composite materials. 1, 2 These ceramic restorations also provide with a predictable bonding to enamel and dentin using current bonding systems.³ However, the majority of provide dental technician with adequate space to create appropriate forms and colors of restorations.

These ceramic veneers made without or with minimum tooth preparation may be called bonded partial ceramic restoration(BPCR) to distinguish it from conventional ceramic veneers which usually require certain amount of tooth reduction. BPCR is a reversible treatment modality and may provide patient with a predictable anterior dental esthetics while preserving tooth structure and pulp vitality. BPCR may also enable to use more predictable bonding to enamel. It may be used for many clinical situations when color and shade of teeth are appropriate but their shapes forms should be modified, for example, diastemas, fractured teeth. It may should be modified, for example, diastemas, fractured teeth. It may also be utilized for enhancement of teeth with inappropriate shapes or contours.

Bonded Ceramic Restorations

- Conventional Porcelain Veneer
Reduction of labial and incisal surface
- All ceramic crown
Reduction of coronal tooth structure
- Partial Bonded Ceramic Restoration
No or Minimal tooth reduction
(Fusayama, W. Geller, M. Pascal, U. Bessler)

|| 그림 1.

Partial Bonded Ceramic Restorations

Advantages

1. Requires no or minimal tooth reduction
2. Bond on to Enamel
3. Porcelain-No discoloration
4. Do not lose luster
5. Can match shape and color

|| 그림 2.

Partial Bonded Ceramic Restorations

Disadvantages

1. Cost
2. Extra visit
3. Difficult to position and cement
4. Junction area-contour and cement interface
5. Very fragile - extremely thin Porcelain
6. lab technique sensitive

|| 그림 3.

Partial Bonded Ceramic Restorations

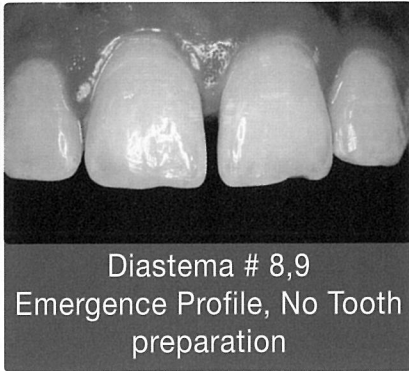
Indications

- Diastema
- Fractured tooth
- Poor tooth contour
- Peg tooth

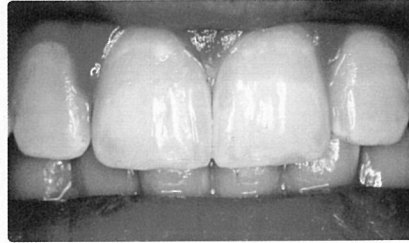
Contra-Indications

- Tooth Color to be changed-tetracyclin
- Severly mutilated tooth

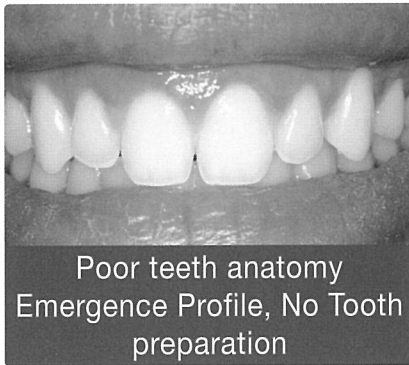
|| 그림 4.



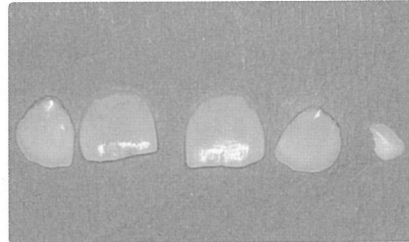
|| 그림 5.



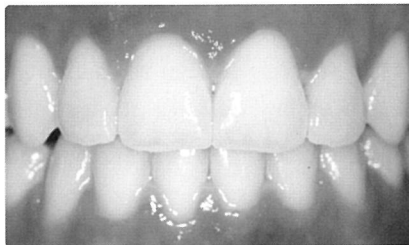
|| 그림 6.



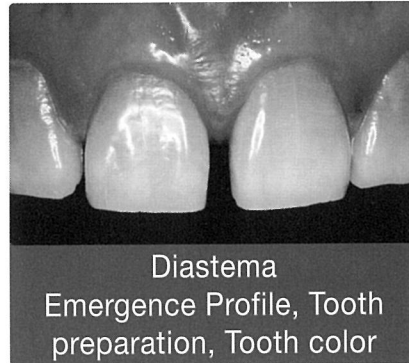
|| 그림 7.



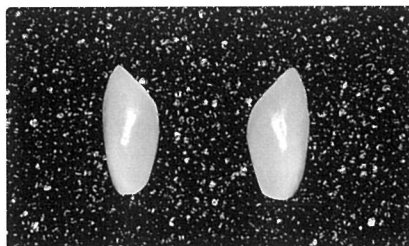
|| 그림 8.



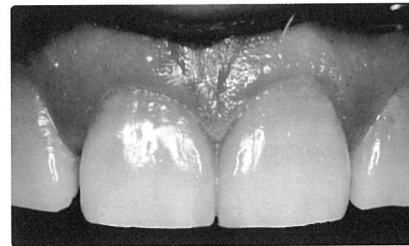
|| 그림 9.



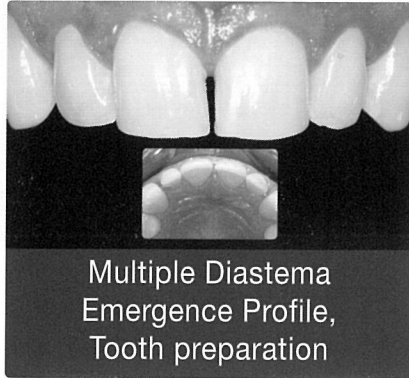
|| 그림 10.



|| 그림 11.



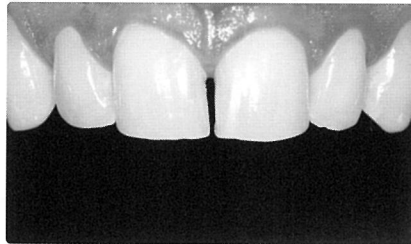
|| 그림 12.



|| 그림 13.



|| 그림 14.



|| 그림 15.



|| 그림 16.

▣ Summary

A technique is presented through clinical cases for restoring anterior teeth to enhance dental esthetics using bonded partial ceramic restorations (BPCRs) without or with minimum reduction of tooth structures. These restorations offer the advantages of the superior properties of ceramic materials and the conservative nature of a direct composite restoration at the same time.