

- 2 -

가 가 , * , †

. . . * . † . .

가 , .
 , 2

: , , ,

(neurilemmoma)
 Schwann

, , , 1
 가

, 35 4
 가 (叢

狀, plexiform) . 가

가 ¹⁾. 가 ,
 (peripheral nerve sheath tumor) (café-au-lait)
 (neurofibromatosis)

1/3
 2.5 cm

2 . Tinel

:
 가 ² 가

Tel: 032) 340-2260, Fax: 032) 340-2671, E-mail: sosaos@hfh.cuk.ac.kr
 2005 29

1/3

10 cm

가

3.5 cm

Tinel

가

1 cm

(Target sign). T1

Gadolinium

2.8x2.1 cm

가

2.1

(Fig.2A-B).

(target sign)가

(Fig.1A-B).

3x2x2 cm

가

가

가

2.3x

1.5x1.5 cm

10 ml

(Fig.1C-D).

(Fig.2C-D).

(plexiform neurilemmoma)

1970

Antoni A

Masson

" Plexiform

Antoni B

schwannogliosiš

²⁾, 1978 Harkin

(Fig.1E-F),

(pallisading)

" Benign plexiform schwannoma "

가

6

³⁾.

S-100

가

(conventional

neurilemmoma) 5%

(plexiform neurilemmoma)

⁴⁾.

2

51

20

(dermis)

(subcutis)

7

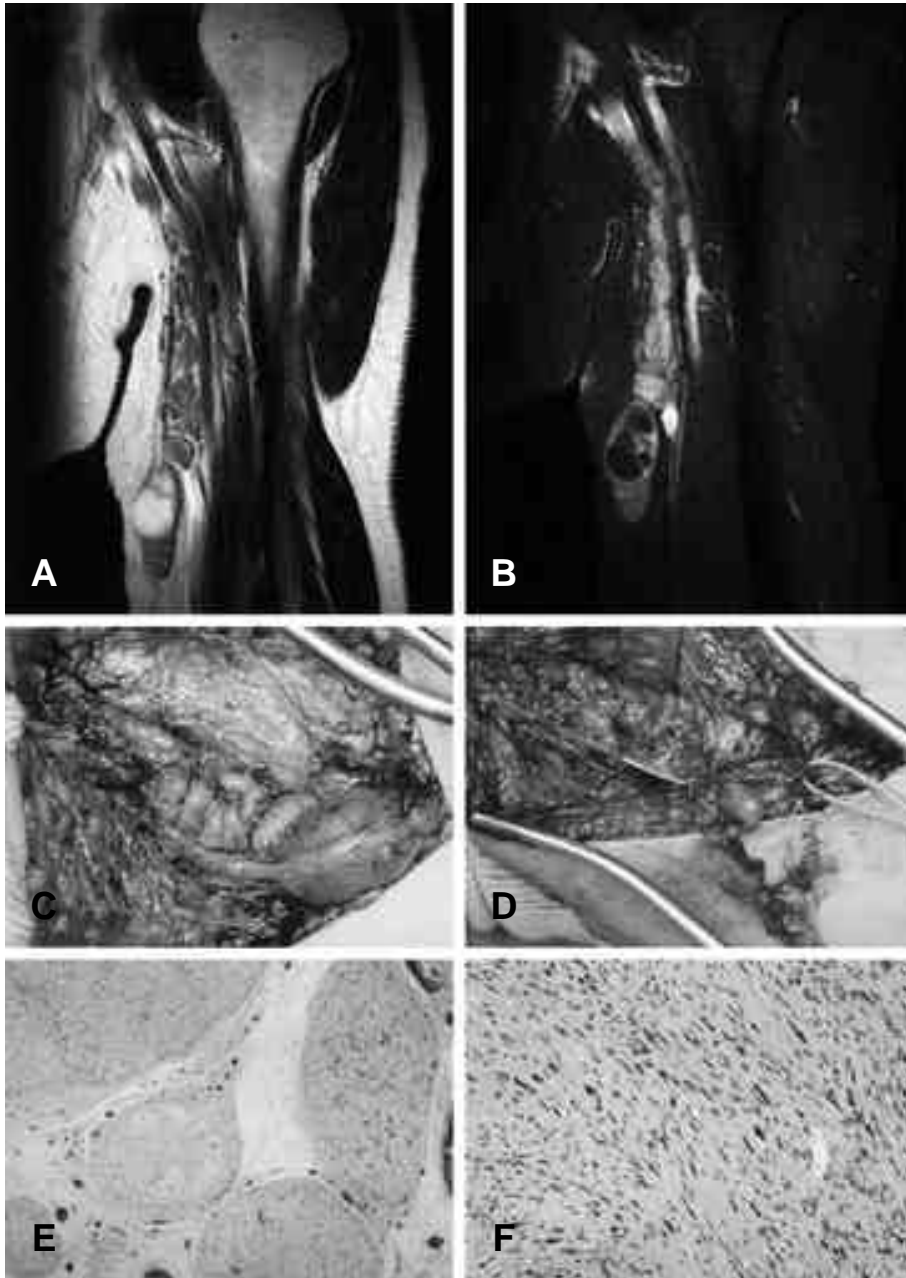


Fig. 1. 35 year old woman with plexiform neurofibroma in left arm. (A) Coronal T2-weighted MR image showed multinodular masses with intermediate signal intensity in medial aspect of left arms. The largest mass showed high signal intensity. (B) Gadolinium enhanced T1-weighted image with fat suppression showed strong enhancement of the masses except for the largest one. (C) The yellowish-white colored, multinodular masses were encapsulated in the subcutaneous layer and linked each other like a cluster of grapes. (D) The masses had adhesion with the cutaneous branch of median nerve and measured up to 10 ml in volume (E) Each circumscribed, grape-like nodule was surrounded by a thin fibrous capsule. (HE stain, $\times 40$) (F) The tumor was composed of Antoni A and Antoni B elements. (HE stain, $\times 100$)

— : - 2 - —

가 , Antoni B ,
⁵⁾ 가 Antoni A

, T1 ⁸⁾
가 가 , T2

T1
가 가 ⁹⁾
(Target sign)가 ^{6,7)}

Antoni A Antoni B ¹⁰⁾
가 ,

Antoni A

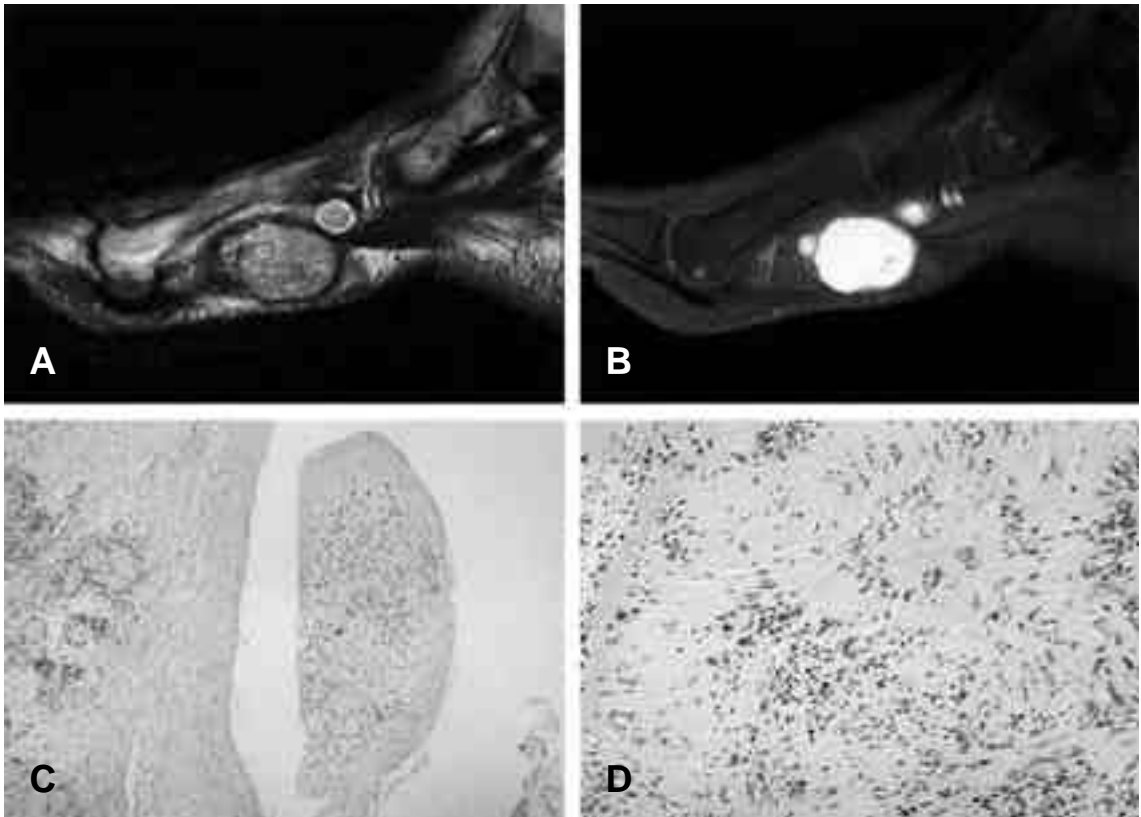


Fig. 2. 51 year old woman with plexiform neurilemmoma in right foot (A) Coronal T2-weighted MR image showed four nodular masses with intermediate signal intensity in the flexor hallucis longus & brevis muscle of right foot. (B) Gadolinium enhanced T1-weighted image showed strong enhancement of the masses. (C) A nodule was composed of cellular tissue separated by fibrous capsule. (HE stain, $\times 40$) (D) The tumor showed Antoni A and Antoni B elements also. (HE stain, $\times 100$)

(叢状)

35

1 51

1

(叢状)

REFERENCES

- 1) **Ikushima K, Ueda T, Kudawara I, Nakanishi K and Yoshikawa H.** Plexiform schwannoma of the foot. *Eur Radiol* 1999;9:1653-1655.
- 2) **Masson P.** Human tumors: histology, diagnosis, and technique. 2nd edn, translated by Kobernick SD. Wayne State University Press, Detroit 1970:1103.
- 3) **Harkin JC, Arrington JH and Reed RJ.** Benign plexiform schwannoma, a lesion distinct from plexiform neurofibroma (abstract). *J Neuropathol Exp Neurol* 1978;37:622.
- 4) **Rongioletti F, Drago F and Robora A.** Multiple cutaneous plexiform schwannomas with tumors of

the central nervous system. *Arch Dermatol* 1989;125:431-432.

- 5) **Keiichi K, Akira O, Tetsuo H, Hiroshi H, Hiroyuki K, Hajime U and Naoto E.** Plexiform schwannoma of the forearm. *Skeletal Radiol* 2003;32:719-723.
- 6) **Varma DGK, Moulopoulos A and Sara AS.** MR imaging of extracranial nerve sheath tumors. *J Comput Assist Tomogr* 1992;16:448-453.
- 7) **Bhargava R, Parham DM, Laster OE, Chari RS, Chen G and Fletcher BD.** MR imaging differentiation of benign and malignant peripheral nerve sheath tumors: use of target sign. *Pediatr Radiol* 1997;27:124-129.
- 8) **Ogose A, Hotta T, Morita T, Yamamura S, Hosaka N, Kobayashi H and Hirata Y.** Tumors of peripheral nerves: correlation of symptoms, clinical sign, imaging features, and histologic diagnosis. *Skeletal Radiol* 1999;28:183-188.
- 9) **Fletcher CDM and Davies SE.** Benign plexiform (multinodular) schwannoma: a rare tumour unassociated with neurofibromatosis. *Histopathology* 1986;10: 971-980.
- 10) **MacCollin M, Woodfin W, Kronn D and Short MP.** Schwannomatosis. A clinical and pathologic study. *Neurology* 1996;46:1072-1079.

**Plexiform Neurilemmoma Unassociated with Neurofibromatosis
- 2 Cases Report -**

**Kee Haeng Lee, M.D., Youn Soo Kim, M.D.,
Chang Hoon Jeong, M.D., Mi Sook Sung, M.D.*,
Jeana Kim, M.D.[†], Seung Woog Choi, M.D., Hyoung Min Kim, M.D.**

Department of Orthopedic Surgery, Radiology and Pathology[†],
Holy Family Hospital, The Catholic University of Korea*

Both neurilemmoma and neurofibroma are originated from Schwann cell. Plexiform tumor was mostly neurofibroma but Neurilemmoma which has plexiform is extremely rare. So it is important to differentiate plexiform neurilemmoma from plexiform neurofibroma, because plexiform neurilemmoma appears to have neither a significant association with neurofibromatosis nor a propensity for malignant transformation. We report two cases of plexiform neurilemmoma involving the left arm and right foot

Key Words: Arm, Foot, Plexiform neurilemmoma, Neurofibromatosis

Address reprint requests to

Hyoung Min Kim, M.D.

Department of Orthopedic Surgery, Holy Family Hospital, The Catholic University of Korea,
2 Sosa-dong, Wonmi-gu, Bucheon 420-717, Korea

TEL: 82-32-340-2260, Fax: 82-32-340-2671, E-mail: sosaos@hfh.cuk.ac.kr