

가

— Abstract —

Internal Fixation with Plate and Bone Graft of Mid-shaft Clavicle Nonunion

Sang-Hun Ko, M.D., Sung-Do Cho, M.D., Moon-Soo Park, M.D.,
Kwang-Hwan Jung, M.D., Jong-Ken Woo, M.D.,
Chae-Chil Lee, M.D., Ji-Young Jeong, M.D.

*Department of Orthopedic Surgery, Ulsan University Hospital
University of Ulsan College of Medicine, Ulsan, Korea*

Purpose: The causes of twelve cases of the mid-shaft clavicle nonunion and the results of internal fixation with plate and bone graft were investigated.

Materials and method: From August 1997 to March 2003, twelve cases of the mid-shaft clavicle nonunion were operated with internal fixation with plate and bone graft. The duration of follow-up was average 13 months.

Results: The causes of the mid-shaft clavicle nonunion included severe associated injury, severe initial displacement of the fracture fragments and insecure fixation. All cases were operated with internal fixation with plate and bone graft. According to the factor for evaluations of results, using a rating scale of excellent (no apparent factors), good (one factor), fair (two factors), poor (more than three factors), the results showed 10 excellent, 1 good and 1 poor. Screw loosening was developed in only one case.

Conclusion: The internal fixation with plate and bone graft of the mid-shaft clavicle nonunion after failed conservative treatment achieved excellent results and seemed to be the procedure of choice for mid-shaft clavicle nonunion.

Key Words: Clavicle, Nonunion, Bone graft, Internal fixation with plate.

:

290-3

Tel: 052) 250-7129, Fax: 052) 235-2823, E-Mail: khjung2007@hanmail.net

— . 8 1 —

12 1 11

가 .

5 ~ 10% 12 8

8

0.1 ~ 1.9% 6 ~ 10 5.3(3 ~ 10)

6). 12 가

가

3). 1995 8 2003 3 12

가

가 , 가 , 가 , 가

1997 8 2003 3 (80%), 1 (6.7%) 10

682 12 (13.3%) 11 (Fig. 1)

1 1 (3 ~ 30) 1,2,3). 가

. 12 가 7 , 가 5 가 3 (metal failure)가 1

, 30 60 가 11 (Fig. 4).

18

5 가

4

12 8 (66%) 2 가 80% 가 1/3

3 , , 가 1/3 가

9 , 4 , 가 가

7 , 1 , 5%

2 가 . 10% 3,6), 8

Sakellari데가 1)

0.1 ~ 1.9% 3,5,6,8)

12 9

2 ,1 . 682 12 가

1.75% : 가 —

Rhieneland⁷⁾ Wilkins⁸⁾

4 8

Sakellari⁹⁾ 가 Wilkins¹⁰⁾ 가

8 (75%) 6 12 11 12

4 1 가 8 가 11 12 11

(66%) 가 가

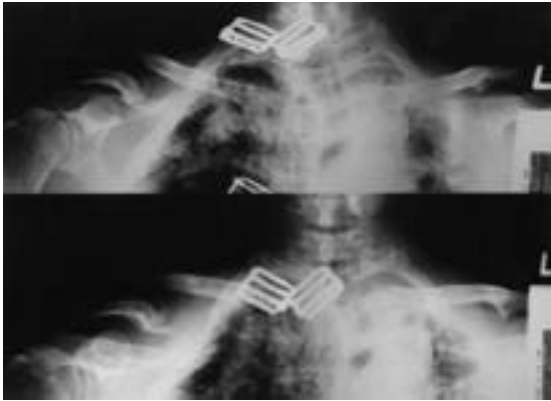


Fig. 1. Fracture of mid-shaft clavicle nonunion in 31-year-old man. Pre-op posteroanterior (PA) and lordotic view shows wide separation of fracture fragment with sclerotic margin.



Fig. 2. Post-op PA and lordotic view



Fig. 3. Post-op 6 months after operation, PA and lordotic view shows good union.



Fig. 4. In 45-year-old man with alcoholic abuse, 3 months after operation, metal failure developed in PA and lordotic view.

가 가 , (13.3%) 11 (Metal Failure)가 1
가 가

1) , 2)
가

REFERENCES

^{2,4)} Wilkins Johnson¹⁰⁾
75%

1) , , , :
19-2 : 367-372, 1984.

가 가
12 (Recon-
struction plate) 가 1
11 3

- 2) , :
, 22 : 1127-1131, 1978.
3) **Johnson EW Jr and Collins HR**: Nonunion of the clavicle. *Arch Surg*,87:963-966, 1963.
4) **Manske DJ and Szabo RM**: The operative treatment of mid-shaft clavicular non-unions. *J Bone Joint Surg*, 67(9):1367-1371, 1985.
5) **Marsh HO and hazarian E**: Pseudoarthrosis of the Clavicle. In Proceeding of the American, British, Canadian, Australian, new Zealand and South African Orthopedic Association. *J Bone and Joint Surg*, 52 : 739, 1970.
6) **Neer CS**: Nonunion of the clavicle. *J Am Med Assn*, 172:1006-1011. 1960.
7) **Rhineland FW**: Tibial blood supply in relation to fracture healing. *Clin Orthop*, 105:34-81, 1974.
8) **Rockwood CA**: Fracture, 3rd ed, Philadelphia, JB Lippincott Co: 945-983, 1991.
9) **Sakellarides H**: Pseudoarthrosis of the Clavicle. *J Bone and Joint Surg*, 43: 130-138, 1961.
10) **Wilkins RM and Johnston RM**: Ununited fractures of the clavicle. *J Bone Joint Surg*, 65(6):773-778,1983.

semitubular plate small DCP
Reconstruction plate
가

1995 8 2003 3
682 12
10 (80%), 1 (6.7%) 1