

2004



, NISTEP(National Institute of Science and Technology Policy) 73 (2004 5)
) ' Science and Technology Indicators 2004 '
 , ' Patent 21() '

If you use our report, please write National Institute of Science & Technology Policy
 Science & Technology Indicators : 2004(NISTEP REPORT No.73)

2가

1 .

2 .

3 .

4 .

1) 1991 1 「
 (Science & Technology Indicators」
 , 5 . 「 」

가
 . 1990 21
 가

가

1995
 , 1996 1
 2 . 2001

1) www.nistep.go.jp - National Institute of Science and Technology Policy



5 .

6 .

7 . (Performance)

8 . 가

9 . 가 가

10 . :

11 . 가

2 가

12 .

13 .

‘ : 2004 (Science & Technology Indicators : 2004)²⁾ , 7 .

가

가

가 가

가 , 가 가

가 가

가 가

가

가 가()

Cross border 1990 가 . [1] WIPO 가

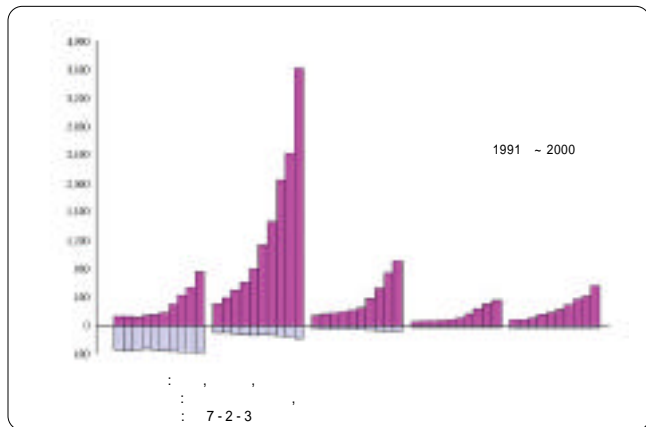
2) Science & Technology Indicators 2004 : NISTEP Report No 73



2000 () 22

3.6% 7.6% 22 50.4%

3



< 3. (1991~2000) >

가 가 2.2%

13

22 31.2%

PCT (%)		가 (%)	
56,586	7.6	79,990	2.2
26,621	11.2	78,559	4.4
24,219	14.4	76,031	6.5
21,724	17.4	76,000	8.6
21,721	20.3	75,783	10.7
21,693	23.2	75,779	12.8
21,553	26.1	75,742	14.9
21,535	29.0	48,765	16.2
21,268	31.8	48,245	17.5
20,772	34.6	48,234	18.9
20,122	37.3	47,969	20.2
19,759	40.0	47,875	21.5
19,477	42.6	45,920	22.8
18,496	45.1	40,143	23.9
14,291	47.0	39,715	25.0
5,519	47.8	37,706	26.1
4,451	48.4	33,987	27.0
3,358	48.8	31,303	27.9
2,898	49.2	30,806	28.7
2,888	49.6	30,400	29.6
2,868	50.0	29,809	30.4
2,843	50.4	29,718	31.2
369,270	49.6	2,490,533	68.8
743,932	100.0	3,620,012	100.0

< 4. >

5] 5 가 .[

가 ,

가가

80.0%

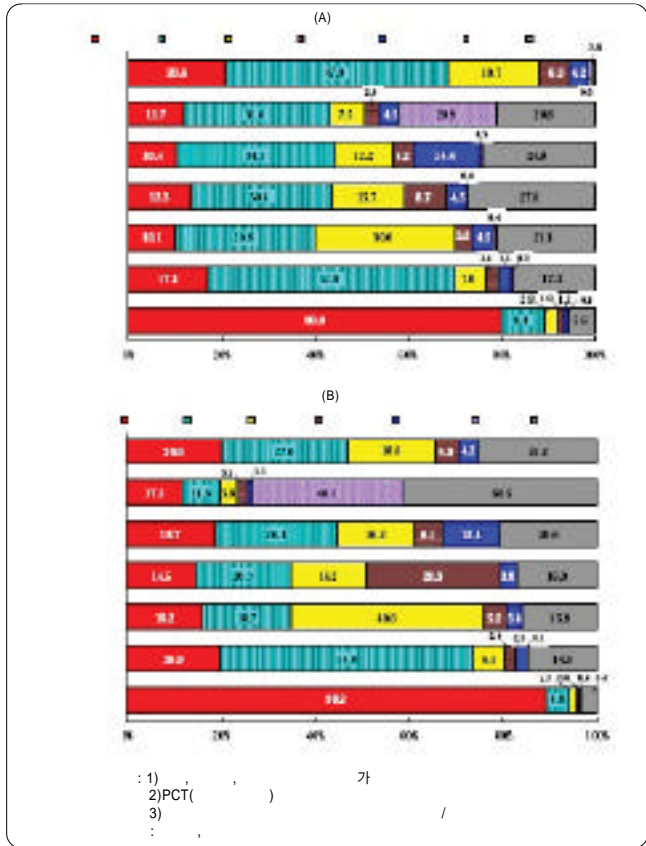
가 가 17.1% () 20.6% (47.9%) 2

10%

가 가 50%가

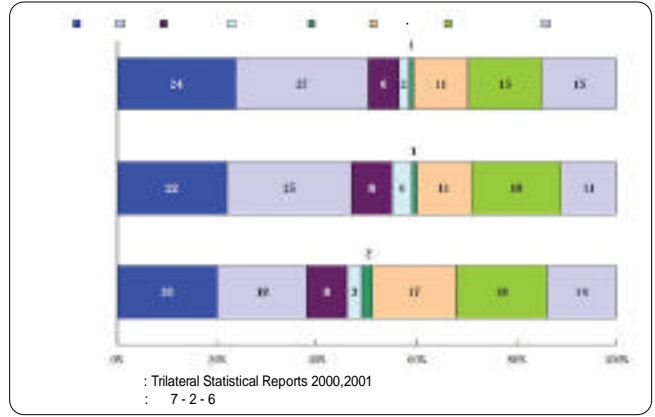
가

가



1) PCT() 가
 2) PCT() 가
 3) 가
 < 5. 가 (2000) >

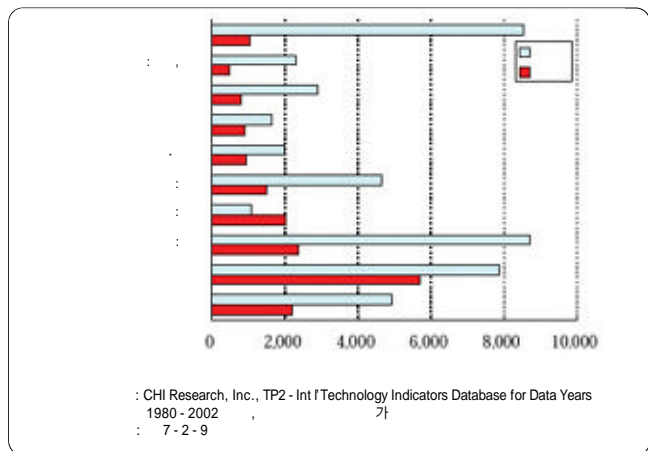
(「3 」) 3
 「 」
 「 」
 「 」
 「 」



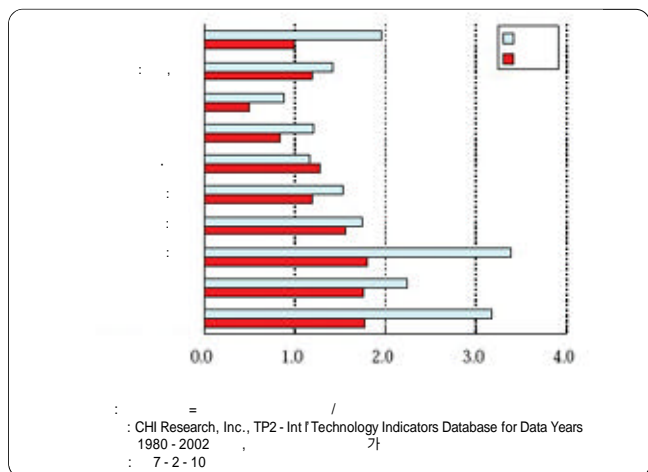
< 6. (2001 : 2000) > [7]

1980 가 , 1980
 가 가 . 1990
 , 2001
 2002 가
 2
 1988 가
 1993 가 , 1996
 2002 50%
 , 1990 , 2000
 가
 가
 () 가
 가

3) EPO(European Patent Office), JPO(Japanese Patent Office), USPTO(U.S. Patent and Trademark Office) 1983
 Trilateral Cooperation

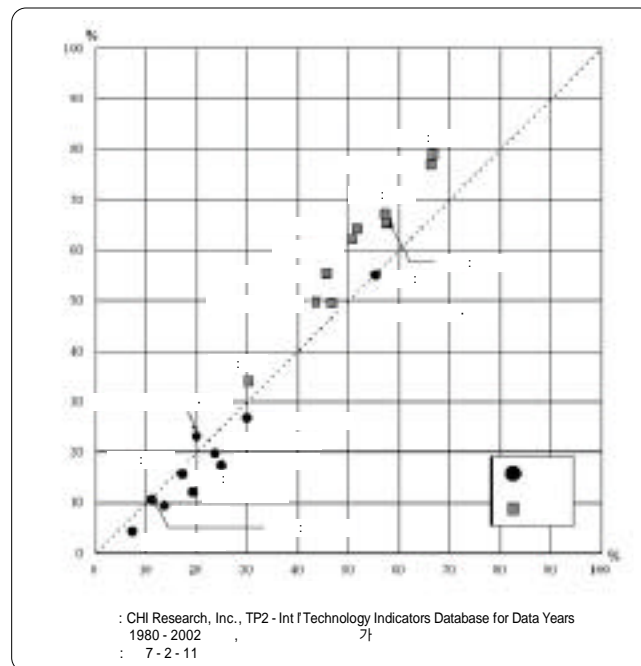


< 9. (2002)>



< 10. (2002)>

10
가 , [8]
10
가



< 11. (1998~2002)>
가

가 가 가

[11]⁵⁾ 10

가

가 1

1

가

OECD

가



5) 1