

# 각종 사료에 의한 녹용의 생화학 성분의 비교

김영식 교수 / 서울대학교 천연물과학연구소

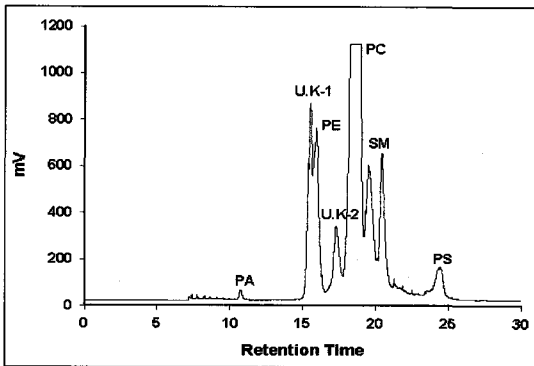


Fig. 7. 녹용이 포함하고 있는 인지질의 고성능 액체 크로마토그래프.

(High-performance liquid chromatography of phospholipids from antler.)

PA : phosphatidic acid, PE : phosphatidyl ethanolamine, PC : phosphatidyl choline, SM : sphingomyelin, PS : phosphatidyl serine, U.K-1,2 : unknown peak-1,2

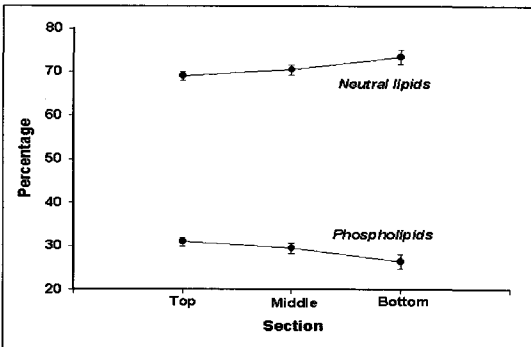


Fig. 8. 녹용의 부위(상대, 중대, 하대)에 따른 인지질과 중성지질의 상대적인 함량의 변화.

(Alteration of relative amount according to each section.)

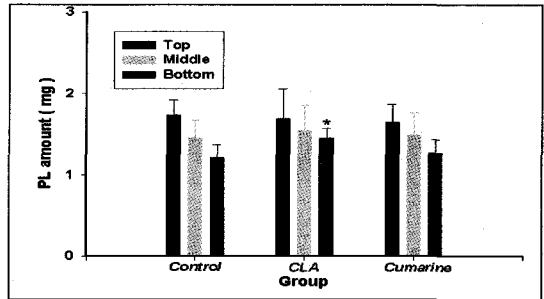


Fig. 9. 총지질(10mg)중 인지질의 함량. (The amount of phospholipids in total lipids (10mg).)

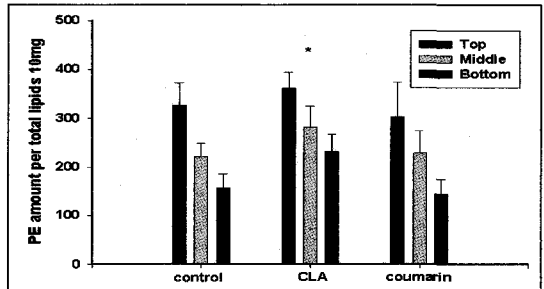


Fig. 10. 특정사료 투여후의 녹용의 상대부위의 포스파티딜 에탄올아민의 함량비교. (Comparison of the amount of phosphatidyl ethanolamine in the antler after treatment of the special fodder.)

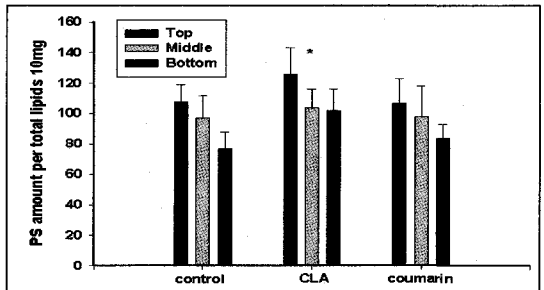


Fig. 10. 특정사료 투여후의 녹용의 상대부위의 포스파티딜 에탄올아민의 함량비교. (Comparison of the amount of phosphatidyl ethanolamine in the antler after treatment of the special fodder.)



**Table 1. 녹용의 화학성분과 함량.**  
(Weights and Chemical Analysis of antlers.)

group	Item Section	Lipid	UA	GAGs	SA	Ash	Ca	Mg	P
Con	T	2.81±0.13a	1.52±0.02a	2.34±0.08a	0.16±0.00a	27.56±0.83a	48.80±0.00b	1.18±0.00b	21.10±0.00b
	M	2.63±0.19a	0.77±0.00a	0.23±0.13a	0.10±0.00a	33.83±0.40a	59.60±0.00b	1.24±0.00b	23.90±0.00b
	B	1.92±0.09a	0.72±0.03a	0.51±0.13a	0.03±0.00a	52.73±2.33a	108.0±0.00b	2.31±0.00b	46.20±0.00b
A	T	3.30±0.29a	1.16±0.08a	1.83±0.08a	0.16±0.01a	32.18±0.39a	22.92±0.00b	0.46±0.00b	11.92±0.00b
	M	2.16±0.15a	0.29±0.03a	0.46±0.06a	0.10±0.00a	47.78±2.07a	36.36±0.01b	0.70±0.00b	18.08±0.00b
	B	1.74±0.13a	0.15±0.04a	0.27±0.06a	0.03±0.00a	61.89±0.71a	38.38±0.00b	0.79±0.00b	19.49±0.00b
B	T	3.76±0.63a	1.89±0.02a	3.78±0.32a	0.29±0.04a	22.19±0.78a	13.23±0.89b	0.39±0.03b	8.05±0.61b
	M	2.53±0.57a	0.24±0.09a	0.40±0.14a	0.09±0.01a	39.05±3.47a	23.87±4.47b	0.58±0.06b	15.01±1.99b
	B	2.10±0.64a	0.13±0.09a	0.22±0.16a	0.04±0.01a	53.99±1.20a	39.86±3.83b	0.89±0.13b	22.55±4.97b
C	T	3.74±0.92a	1.33±0.14a	1.98±0.13a	0.20±0.05a	24.38±5.21a	16.32±5.63b	0.45±0.10b	11.60±2.75b
	M	2.83±0.62a	0.21±0.02a	0.39±0.04a	0.10±0.01a	36.47±2.77a	26.29±1.88b	0.61±0.04b	14.04±1.06b
	B	1.84±1.08a	0.26±0.02a	0.52±0.06a	0.05±0.01a	51.52±8.91a	37.90±5.20b	0.87±0.10b	20.44±3.08b

UA : 우론산(uronic acid), SA : 시알산(sialic acid), T : 상대(top section), M : 중대(middle section), B : 하대(bottom section). <sup>a</sup> % (건물시료) [% of dry material] <sup>b</sup> mg/g (건물시료) [<sup>b</sup>mg / (g of dry material) ]

**Table 2. 녹용의 각 부위별 지방산의 조성.**  
(Fatty acid composition of each section of Antlers.)

단위(%)

group	Con			A			B			C		
	T	M	B	T	M	B	T	M	B	T	M	B
F.A												
C14:0	2.53	3.59	3.83	6.86	6.14	5.31	3.27	5.45	6.27	5.00	7.02	6.75
C15:0	1.99	3.06	3.50	7.65	6.89	5.54	3.28	5.75	6.84	6.68	9.19	8.55
C16:1	2.83	1.24	2.22	1.89	1.98	2.19	3.34	1.24	2.00	4.02	3.80	3.94
C16:0	31.00	39.03	37.65	18.46	19.27	22.61	25.29	26.39	24.65	20.70	17.57	21.74
C17:0	1.90	2.32	3.01	5.3	5.16	3.84	2.04	3.32	4.99	5.38	7.28	6.18
C16:0 <sup>a</sup>	4.80	13.27	12.78	18.31	15.34	13.18	12.07	16.54	15.76	11.17	12.52	11.73
C18:2	10.04	4.93	5.93	5.84	3.63	6.50	9.78	6.18	6.21	9.19	6.02	7.38
C18:1	22.42	10.23	8.99	12.29	14.66	14.57	21	8.10	7.37	13.33	9.25	10.33
C18:0	18.42	16.35	16.87	10.32	11.73	12.54	13.06	12.91	10.27	11.04	9.63	11.86
C19:0	1.15	1.87	1.03	3.58	5.05	5.39	1.64	4.45	3.94	3.86	5.87	5.00
C20:0	0.89	1.27	1.38	3.36	3.62	3.35	1.72	3.10	2.71	3.70	4.22	2.08
C21:0	1.31	2.19	2.20	4.69	4.97	3.59	2.67	4.88	4.40	3.89	4.61	3.11
C22:0	0.58	0.57	0.56	1.38	1.53	1.37	0.76	1.59	1.84	1.92	2.92	1.29

The content is expressed as the percentage of total fatty acid.

a : 2-hydroxy-hexadecanoic acid T : 상대, M : 중대, B : 하대

<끝>