

- 2 -

가
2 가 , 1 10 가 1
:

가 , 1
2 가 8
7)
1958 Jaffe ³⁾ 6 가 2,4,5,8)
12 가
2 가 가
1 10 가 ,
1 14 mm x 17 mm

: 1

Tel: 02) 958-8369, Fax: 02) 964-3865, E-mail: CShan1129@khmc.or.kr

. 1994 9

14

(Fig. 3).

(cartilagenous cap)

2

(Fig. 1).

(Fig. 2). 1 5

10 가 2

가

, 가

1996 2

가 ,



Fig. 1. The postoperative anterior (A) and lateral (B) roentgenography of the left knee of 5 year-old male patient.

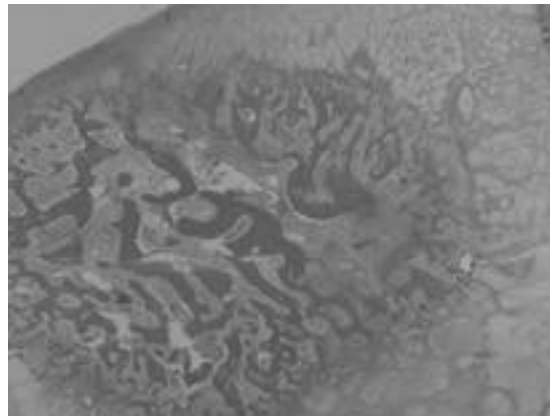


Fig. 2. The pathologic findings of biopsy specimen: Microscopic study of the mass showed typical finding of osteochondroma (x 40, H&E).



Fig. 3. Anterior and lateral radiographys of left knee at last follow up.



Fig. 4. Preoperative plain radiographys of right knee joint. Lateral projection showed the definite inhomogenous bony mass projecting from distal femur.

10

30 mm x 20 mm
(Fig. 4).

3

(portal)

(hard mass)

가

가

30 mm x 20 mm

(Fig. 5, 6).

(Fig. 7)

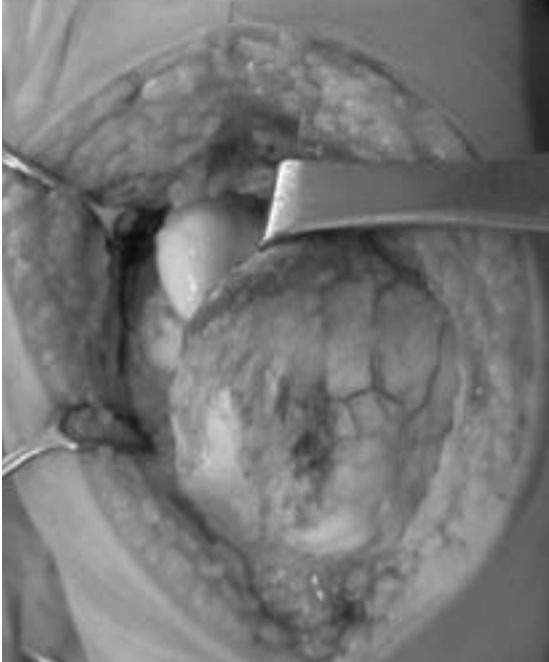


Fig. 5. Photograph of intra-articular mass arising from the distal condyle of femur.



Fig. 6. Gross finding of the excised mass shows oval shaped, whitish colored, hard mass (size, 3 x 2 cm).

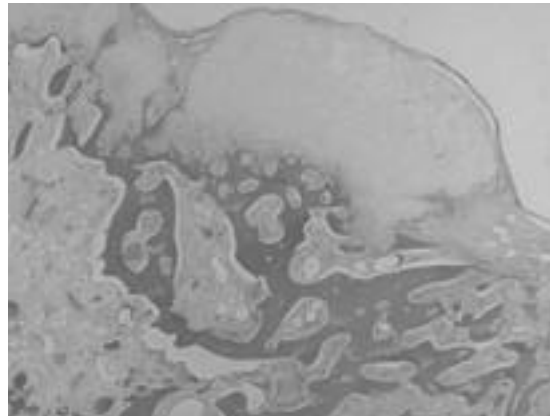


Fig. 7. The pathologic findings of biopsy specimen: Microscopic study of the mass showed typical finding of osteochondroma (x 40, H&E).

(cartilage metaplasia and proliferation)

가

(enchodral ossifica-

가

tion)가

가

1

2

⁴⁾

가

. 10

가

. 1958

Jaffe ³⁾

6

Mosher ⁶⁾

3

가

. 3

가

20

60%

. Sarmiento ⁸⁾

2 , 10

1

Bles

2

hman ¹⁾

1

1984

⁹⁾

5

1

REFERENCES

⁶⁾

가

가

2 , 10

2

가

2

가

- 1) **Bleshman MH, Levy RM:** An unusual location of an osteochondroma. *Radiology*: 127-456, 1978.
- 2) **Das AK, Mukherjee DR:** Giant osteochondral loose body of the knee joint. A case report. *J Bone Joint Surg*, 60-A(4): 559-560, 1978.
- 3) **Jaffe, HL:** Tumors and Tumorous Conditions of the Bones and joints. *Philadelphia, Lea and Febiger*: 558-597, 1958
- 4) **Milgram JW, Dunn EJ:** Para-articular chondromas and osteochondromas: a report of three cases. *Clin Orthop*, 148: 147-151, 1980.
- 5) **Milgram JW, Jasty M:** Case report 238: para-articular osteochondroma of the knee. *Skeletal Radiol*, 10(2): 121-125, 1983.
- 6) **Mosher JF Jr, Kettelkamp DB, Campbell CJ:** Intracapsular or para-articular chondroma. A report of three cases. *Bone Joint Surg*, 48(8)-A: 1561-1569, 1966.
- 7) **Reith JD, Bauer TW, Joyce MJ:** Paraarticular osteochondroma of the knee: report of 2 cases and review of the literature. *Clin Orthop*, 334: 225-232,

1997.
8) **Sarmiento A, Elkins RW**: Giant intra-articular osteochondroma of the knee. *J Bone Joint Surg*, 57-A(4): 560-561, 1975.

9) **Myung Sang Moon, Young Kyun Woo, Seung Uk Yang**: Intra-Articular Osteochondroma of the Knee -A Case Report-. *J Korean Orthop Assoc*, 19: 735-737, 1984.

Abstract

Intra-Articular Osteochondroma of the Knee -2 Cases Report-

Chung Soo Han, M.D., Bi O Jeong, M.D., Dong Hyuk So, M.D.

Department of Orthopaedic Surgery, School of Medicine, Kyung Hee University, Seoul, Korea

Conventional osteochondroma is common bone lesion usually originated near the end of a long bone. But intra-articular osteochondromas are very rare and have been reported less than a dozen cases.

The authors experienced two cases of intra-articular osteochondroma of the knee joint. Histology as well as gross finding were consistent with osteochondroma.

The tumor was excised surgically, and symptoms were relieved.

Key Words: Knee, Intra-articular osteochondroma.

Address reprint requests to

Chung Soo Han, M.D.

Department of Orthopaedic Surgery, School of Medicine, Kyung Hee University, Seoul, Korea

#1 Hoeki-dong, Dong Dae Mun-Ku, Seoul 130-702, Korea

TEL: 82-2-958-8369, Fax: 82-2-964-3865, E-mail: CSHan1129@khmc.or.kr