

SE 프로세스를 지원하는 Telelogic의 통합 솔루션

www.telelogic.com
Senior consultant
younghae Jung
younghae.jung@telelogic.com

목차

- 제품 소개
- V모델 접근에 따른 역할
- 역할 기반의 도구 데모
 - The Analyst(분석)
 - The Architect(구조)
 - The Developer(개발)
 - Technical Reference(기술 참조)
- 효과

소개
: DOORS-요구관리 시스템
및 TTD(분석, 설계, 자동 Code 생성)

어플리케이션 개발 생명 주기에 대한 텔레로직 솔루션

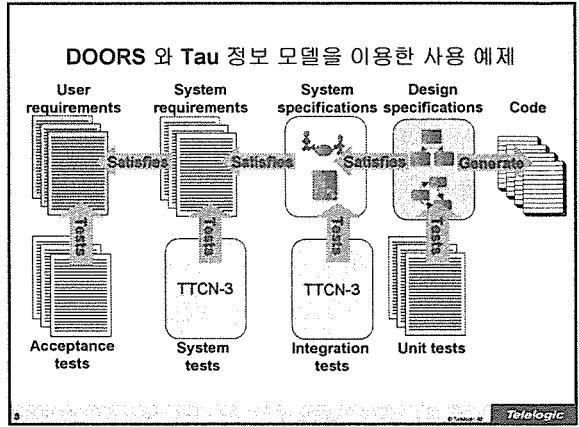
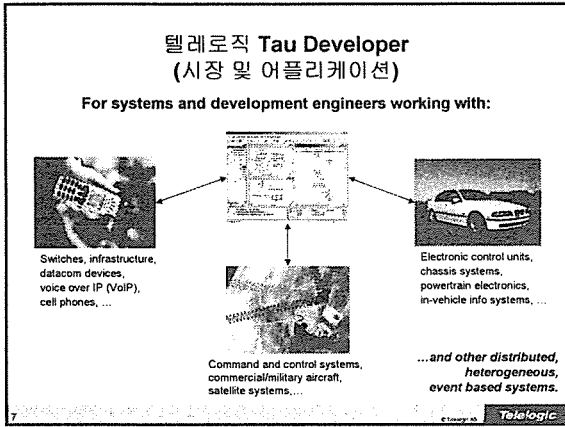
시스템과 소프트웨어 공학의 확장 추적성

- Traditional Requirements Management
 - can ensure formal two-way traceability between layers of requirements
 - but usually not for engineering artifacts
- Formal traceability between requirements and UML enables
 - Traceability across the life cycle
 - Requirements ↔ UML
 - UML ↔ UML and UML to code

DOORS에서의 추적성

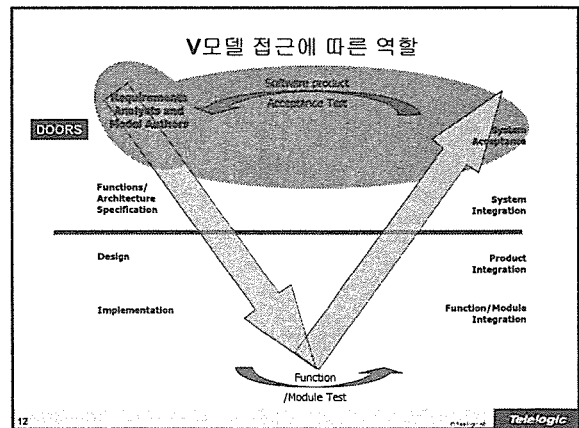
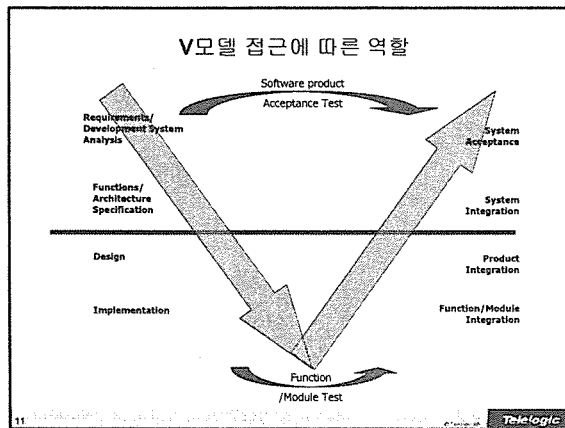
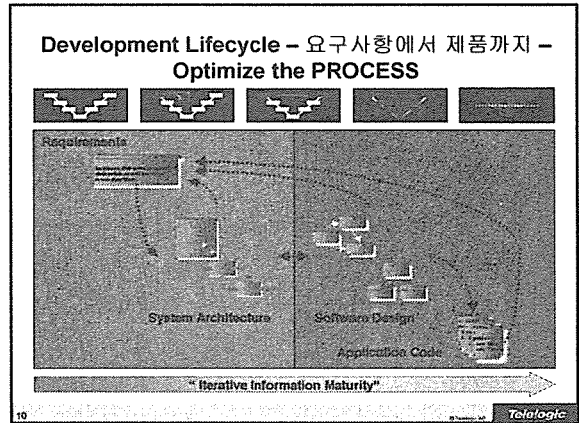
User Reqts Technical Reqts Design Test Cases

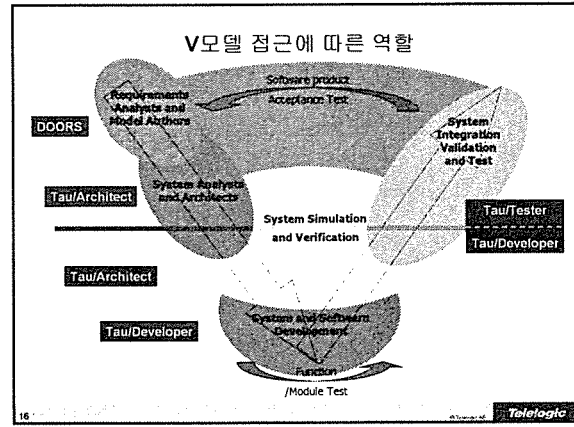
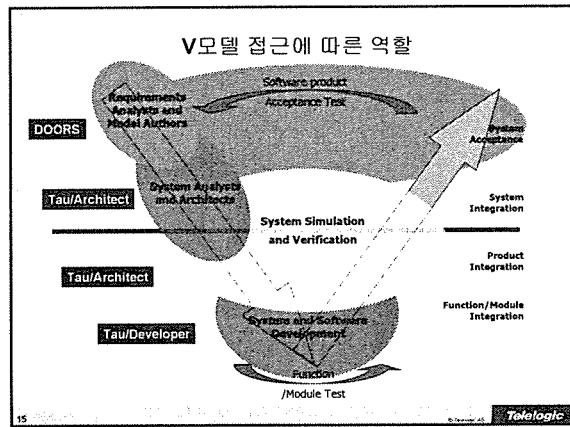
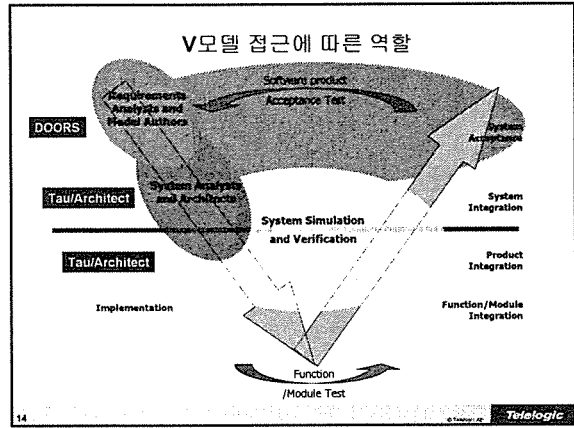
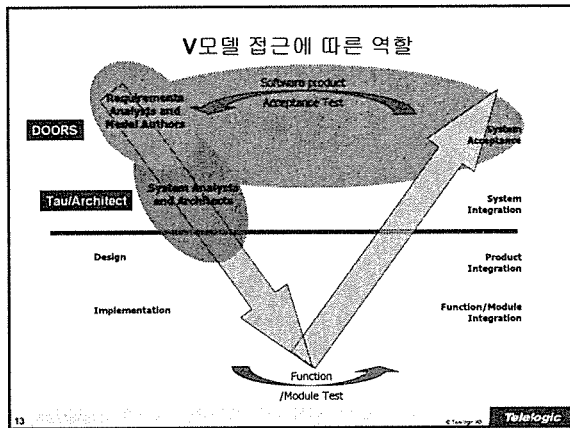
End-to-end visual validation in a single view



V모델 접근에 따른 역할

9 © 2000-06 Telelogic





역할에 따른 제품 사용

Requirements Analyst and Model Author	DOORS	Tau G2	Tau G2
System Analyst and Architect	DOORS	Tau G2	Tau G2
System Simulation and Verification	DOORS	RapidPL US	Tau G2
System & Software Development	Tau G2	Tau G2	Tau G2
System Integration, Validation and Test	DOORS	Tau G2	Tau G2

17

역할 기반의 도구 데모

18

역할 기반의 도구 데모

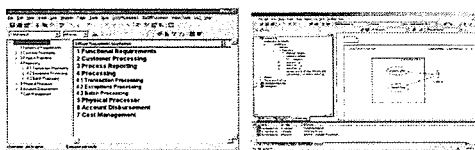
- Demonstration focus
 - Collaboration between roles and role activities
 - The Analyst
 - The Architect
 - The Developer
 - Role input, role activities, and role output
- Traceability
 - Between requirements
 - Between model and requirements
 - Between model phases
 - Analysis of requirements coverage and requirements change impact
- Example used is the Coffee Vending Machine system
 - User inserts 5 cent coins and selects coffee or tea
 - Vending machine returns a cup of coffee or a cup of warm water

19

Telelogic

The Analyst - Overview

- Requirements management
- Requirements modeling
- Provide traceability



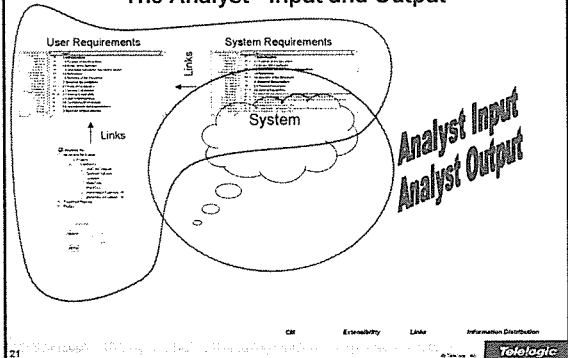
DOORS

Tau/Architect

20

Telelogic

The Analyst - Input and Output

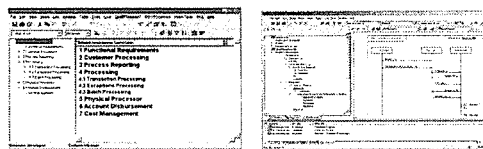


21

Telelogic

The Architect - Overview

- Requirements management
- Architectural modeling and verification
- Provide traceability



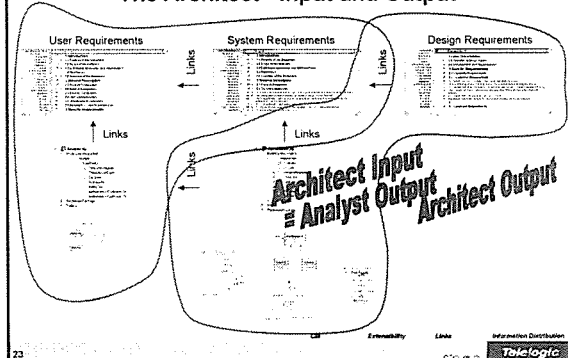
DOORS

Tau/Architect

22

Telelogic

The Architect - Input and Output

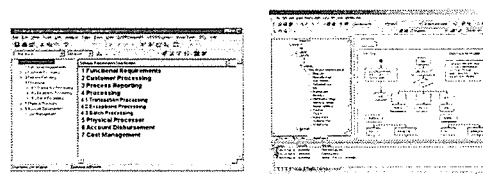


23

Telelogic

The Developer - Overview

- Design modeling and verification
- Provide traceability
- Build and deploy

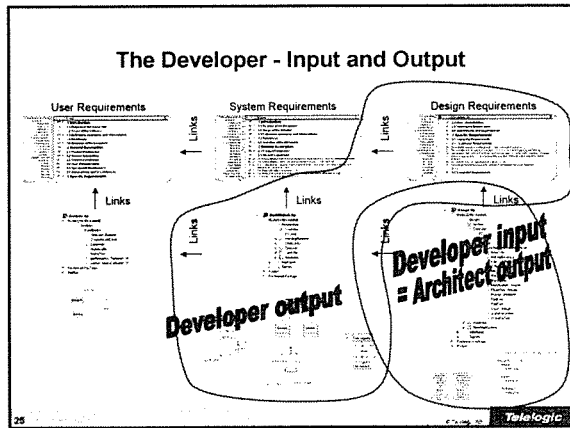


DOORS

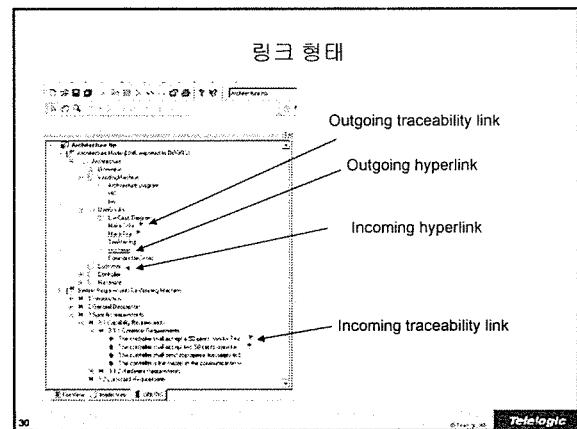
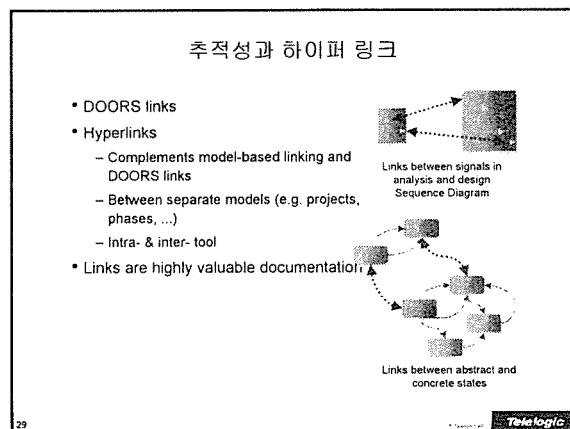
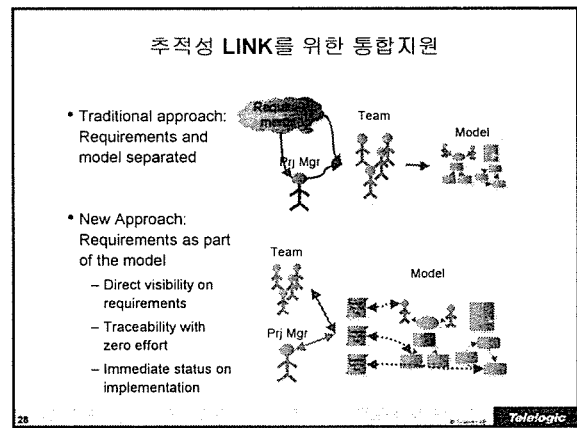
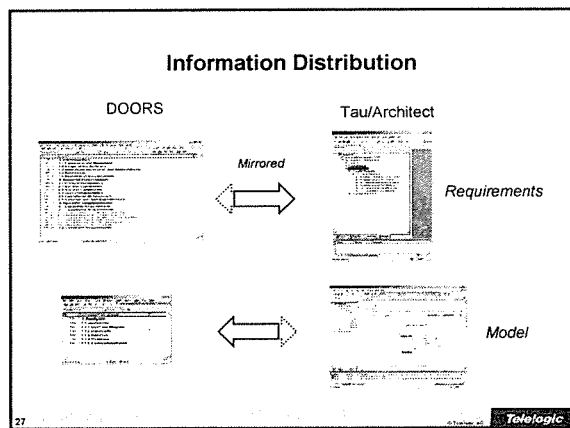
Tau/Developer

24

Telelogic

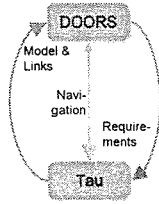


기술 참조



TTD - DOORS 통합

- Role-based approach
 - Tau as a 'window' into DOORS ensures visibility on requirements
 - Easy access to UML from inside DOORS
- Easy installation, set-up and connection between DOORS and Tau
- Fine-grained traceability to UML models
- Easy link creation and direct bi-directional navigation between DOORS and Tau
- Smooth integration:
 - Navigate directly from Tau to requirement in DOORS
 - Possibility to read and link to requirements without starting DOORS



31

Telelogic

효과

효과

- Quality
- TTM
- Cost
- Maintenance

33

Telelogic