

The conservation Treatment and examples of
Sangyangmun in a wooden building

李惠閔 · 鄭容在 · 李奎植 · 韓成熙¹⁾

Hye Yun Lee, Yong Jae Chung, Kyu Shik Lee and Sung Hee Han

ABSTRACT

Sangyangmun is a written record which inform the date, time, history and reason of constructing a wooden building. We have conserved Sangyangmun which was discovered during the repairment and restoration of wooden building.

From 1998 to 2002, We have completed the conservation of 27 pieces of 13 cases, for example Daeung-jeon, Bongjeonsa-Temple.

First We investigated the material or damage condition of Sangyangmun, and carried out fumigation in order to prevent insects and fungi. Then Sangyangmun must be sealed hermetically using escal film in order to prevent the second damage.

1)

(Curatorial Office, National Museum of Contemporary Art)

.

(工役) , , ,

, ,

,

(上樑文) .1) ()

,

.

.

.2)

가 .

가 .

.

.

가

.3)

1991

, 1998

.2)

13 27

,

,

,

,

,

.

1.

1991 11 2002 10 38

Table 1

2.

가 2 가

2-1

가 .4) , , ,

2-2

가 가 가

가

2-3

가

가

가

가

가

가

(Methyl bromide)

(Ethylene oxide), (Tymol)

86:14

.5)

2-4

가

가

가

가

가

.6)

가

가

3.

3-1

(812)

4 (1395)

4 (1867)

. 2000 9

2

가.

- : 1200cm × 78cm, :

- “水”字

- “水”字 가 5

.(“森”字 가 .)

- “水”字 6字

Table 1-1. (1991 ~ 2002)

1991. 11		1	96cm × 62cm			
1992. 7		1	32cm × 620cm			
1992. 11		1	34cm × 224cm			
1992. 11		1	34cm × 185cm			
1992. 12	()	2 (1 , 1)	76.5cm × 228cm () 37.5cm × 234cm ()	:		
1992. 12	()	2 (1 , 1)	76.5cm × 333cm () 39cm × 235cm ()	:		
1993. 5		1	30cm × 450cm			
1993. 7		1	34cm × 390cm			
1993. 7		1	34cm × 390cm			
1993. 7		1	34cm × 390cm			
1993. 7		1	34cm × 390cm			
1993. 5	.	2 (1 , 1)	—	:		
1993. 11		1	—			
1993. 11	()	3 (1 , 2)	—	:		
1994. 3		1	33.6cm × 156.5cm			
1995. 12		3	105cm × 120cm 95cm × 110cm 60cm × 105cm			
1996. 1		1	36cm × 225cm			
1996. 9		1	—			
1997. 4		1	—			
1997. 4		1	—			

Table 1-2. (1991 ~ 2002)

1997. 4		1	—			
1997. 4		1	—			
1997. 4		1	—			
1997. 4		1	—			
1998. 4		2	—			
1998. 9		1	—			
2000. 6		1	32cm × 19cm			
2000. 9		1	78cm × 1200cm			
2001. 1		3	77cm × 1356cm 36.5cm × 790cm 77cm × 149cm			
2001.11		4	56.6cm × 67cm 85.9cm × 45cm 23.7cm × 45cm 46.5cm × 44.5cm			
2002. 3		3	—			
2002. 7		2	105cm × 35cm 202cm × 84cm			
2002. 7		3	80cm × 70cm 38cm × 65cm 38cm × 80cm			
2002. 8		3	23cm × 101cm 29.5cm × 159cm 55.5cm × 172.5cm			
2002. 8		4	58.5cm × 385cm 46cm × 154cm 95cm × 164cm 51.5cm × 103cm			
2002. 9		1	36cm × 58.4cm			
2002.10		1	7cm × 70cm			
2002.10		1	98cm × 657cm			

- “水字
99.5% (銀) , “水字 (Ag)
(Au)
- “水字
, Ethyl
Alcohol
Ethyl Alcohol 2 40% Paraloid
NAD-10
3-2 (223)
, 4 (1867)
130 (木構造)
, 2001 1
(6)
(Photo 1).



Photo 1.

(勤政殿上樑文) 1 , “水”字
 5 , (營建都監監董都堤調) 1 ,
 (興宣大院君大院君閣下奉) 1 , “龍” 2 , “水”
 1 (Photo 2).

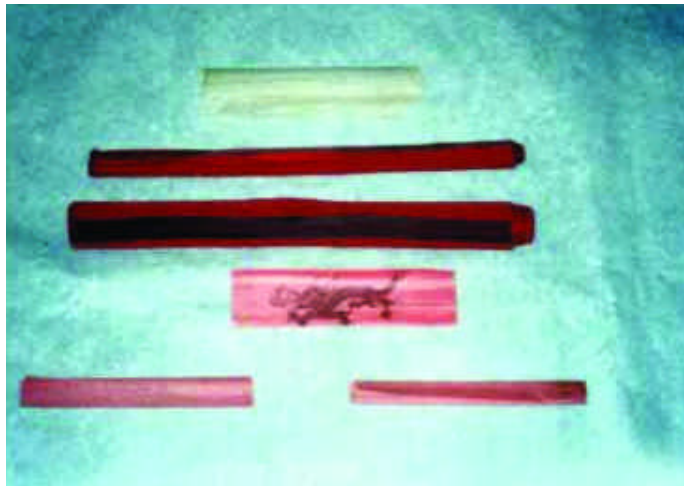


Photo 2.

(6)

가.

(勤政殿上樑文) : 1

- : 770×13,560mm, :
- “水”字가 5

“水”字 (2)

- : 35.0×36.3cm, 0.13mm
- : 34.8×35.7cm, 0.10mm
- 가 .

(“森”字가)

(營建都監監董都堤調) : 1 , : 365×7,900mm,

:

(興宣大院君大院君閣下奉) : 1

- : 770×1,490mm, :

“水”字紋 : 2

- 1003 982 “龍”字 “水”字

- “水”字紋 No.1 (: 383×445mm,) : 1003 “龍”字

- “水”字紋 No.2 (: 385×440mm,) : 982 “龍”字

“龍”紋樣 : 1 , : 383×270mm, :

“水”字

- (5) 1 6 “水”字が

(銀)

“水”字 (Ag) (Au)

((Photo 3, Table 2) .

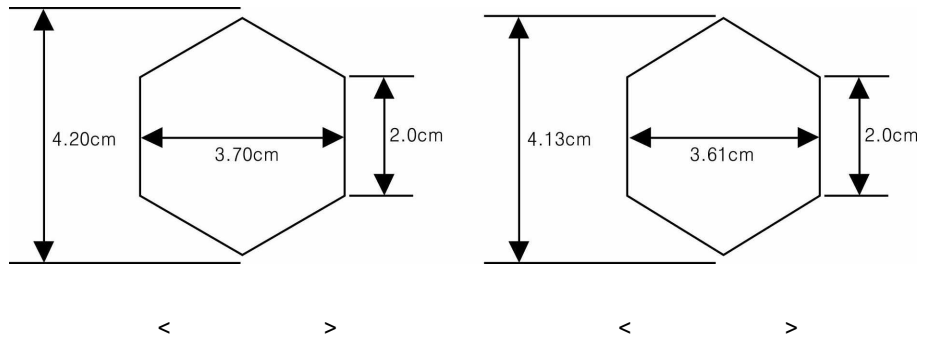


Photo 3.
“水”字

Table 2.

	(銀)	(:2cm)	4.20cm	3.70cm	3.1mm	37.35g
	(銀)	(:2cm)	4.13cm	3.61cm	3.1mm	37.12g

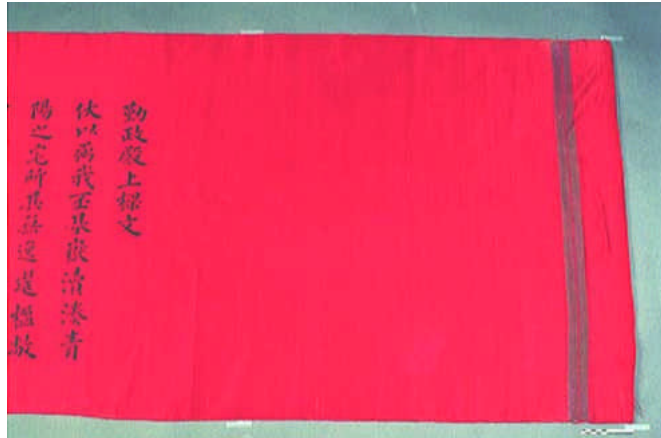


Photo 4.

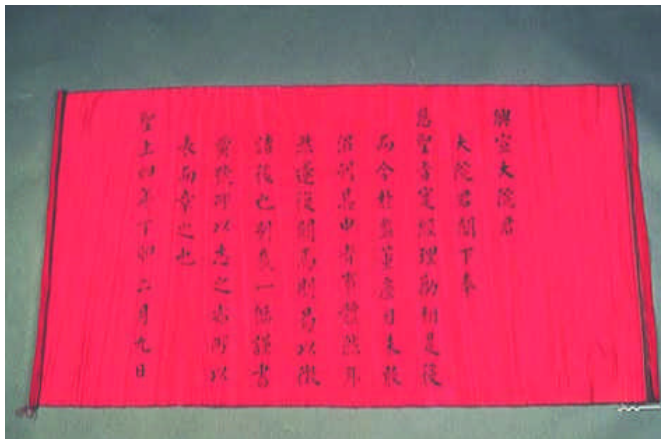


Photo 5.

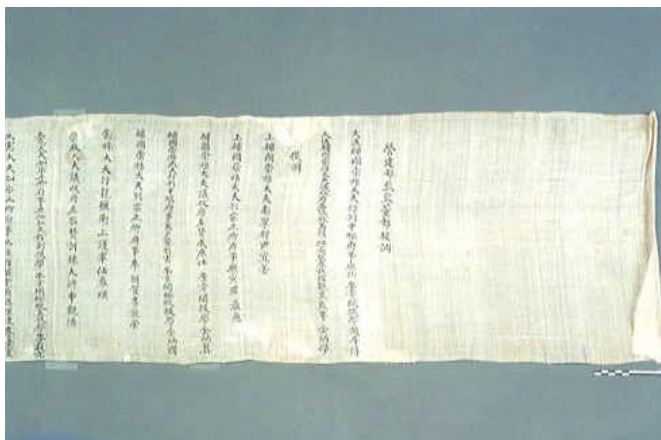
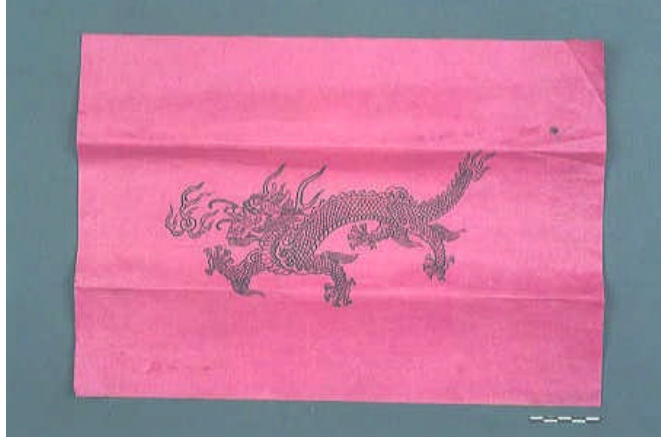


Photo 6.

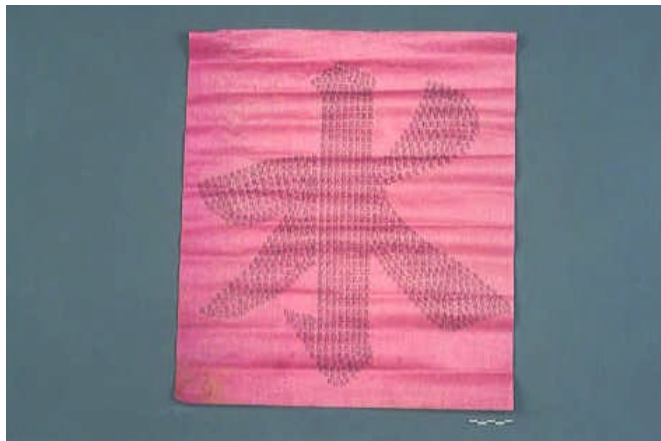
“龍”文様

Photo 7.



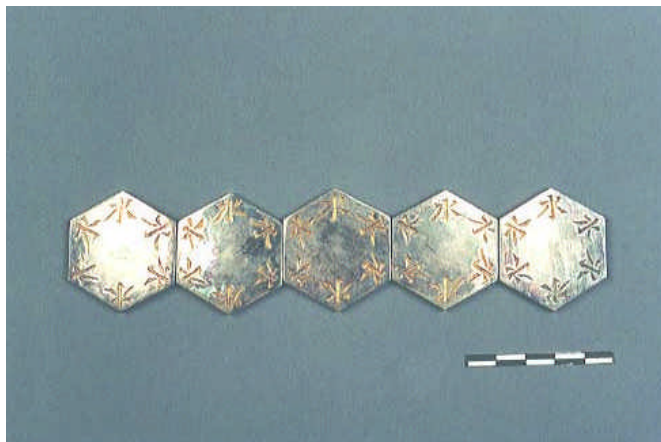
“水”文様

Photo 8.



“水字”

Photo 9.



가 .
 (86:14) 36
 ()
 가 가 (Photo 10).
 “水字 5 5
 가 , 가
 (Photo 11).
 “水字
 (Photo 12).
 “龍 ” “水 ” , “水字

3-3 (616)
 17 (1435) , 8 (1513)
 가 , 14 (1662)
 , 7
 2001 11

가.
 (大成殿重建時小錄) 1 , : 56.6cm × 37cm
 (大成殿重修上樑文) 1 , : 85.9cm × 45cm
 (別書小錄) 1 , : 23.7cm × 45cm
 (天啓二年朴墩誌) 1 , : 46.5cm × 44.5cm



Photo 10.
(6)

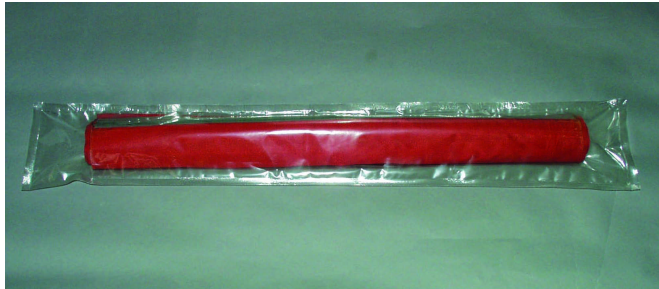


Photo 11.

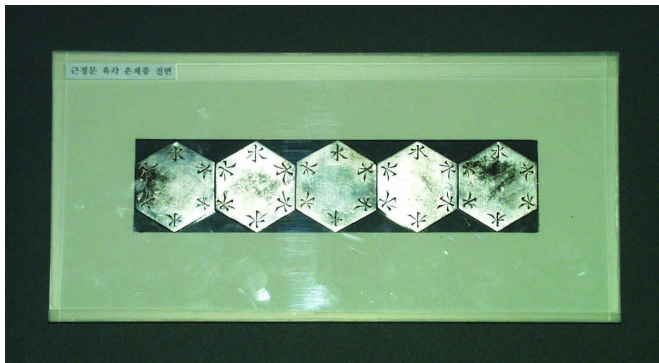


Photo 12.

“水字”

- () ,
 , 1987

(大成殿重建時小錄) 4 ,
 (大成殿重修上樑文) (別書小錄), (天
 啓二年朴暎誌) 3 .

- 4 . ()
) 12 , ()

3-4 (15)
 (文武王) 12年(672) (義湘祖師)가
 (重修) ,
 가
 2002 8 .

가.
 (極樂殿上樑記) 1 , : 가 23cm × 101cm
 (極樂殿重修記) 1 , : 가 29.5cm × 159cm
 (金剛經塔印經紙) 1 , : 가 55.5cm × 172.5cm
 (,) 2
 (5 , 10 , 50) 3
 (1 , 5 , 10 , 50 , 100 , 500) 6

- ,
 .
 3 ,

1. , , 1976 ; 868.
2. , , 1989 ; vol 11 ;476~477.
3. . . , , , 1998 ;
255 ~ 274.
4. , , , 1995 ; 175 ~ 184.
5. . . , ,
, 2000 ; vol 21 ; 5~55.
6. , RP SystemIM , 1997.