

사례보고

# 진단방사선과 검사실의 환경개선이 환자에게 미치는 영향에 관한 연구

A Study on the Effect of the Environmental Improvement  
in the Diagnostic Radiography Room on Patients

Dae Cheol Kweon, Sung Man Hong<sup>1)</sup>, Dong Sung Kim, Peom Park<sup>1)</sup>  
Department of Diagnostic Radiology, Seoul National University Hospital  
Department of Industrial & Information Systems Engineering, Ajou University<sup>1)</sup>

## Abstract

**Background** : This study was attempted to provide us with basic data on how to environmental improvement with patients for examination, and to offer

---

\* : , 28 ,  
Tel) 02-760-3603, E-mail) yoojookweon@yahoo.co.kr

them better treatment. This study was performed to compare the patients, perception between before and after improvement in the diagnostic radiography room.

**Methods** : The data was collected by interviewing 75 patients who underwent the radiography under the diagnostic radiology at Seoul National University Hospital in Korea. The interview ran from August 9 to October 18, 1999. Data were analyzed by percentage and paired t - test. SD(Semantic Differential) method was composed of adjective 13 words.

**Results** : Patients were attending the elementary schools in the Seoul residents. There was no significant difference in kindness unkindness dimension and were significant differences in other dimensions. The mean score of response level to present room was 3.67 and that of improvement room was 2.16.

**Conclusions** : The results of this study suggest a radiography room plan which is considering emotional aspect of children.

**Key Words** : Radiology department, Health facility, Environment

I.

II.

24

가

가

1985

15

(1).

(2,3)

1.

(4),

가

(brainstorming)

Brainstorming

1989

가 가  
가

가

가

가

가

가

가

가 가

가

가

가

가

가

가

가

가

2.

3.

1999 8 9 10 18

Film cassette

가 가

가

가

Munsell system

9B 7.5/5.5

80

가

5

75

foot switch가

SD

(Semantic Differential;

)

SD

13

Film

cassette

가 가

5

(1 ),

(2 ),

(3 ),

(4 ),

foot switch가

(5 )

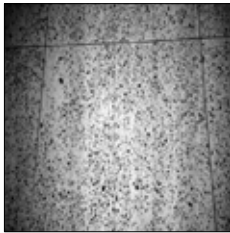
가

가 . 4 , 5 . 1  
 , SD 가 .

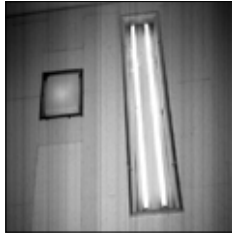
III.

Cronbach's Alpha=0.94  
 SPSSwin 7.0 paired t-test

1 , 8 가 10 13.3%, 9 14  
 18.6%, 10 12 16%, 11 13  
 17.3%, 12 11 14.6%, 13 15  
 20% 가 40 53.3%,  
 가 35 46.7% .  
 가 ( 2).



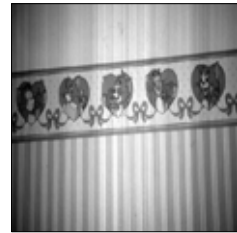
a



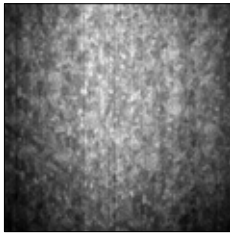
c



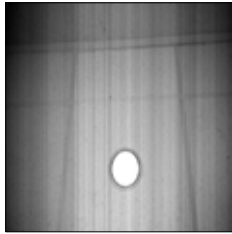
e



g



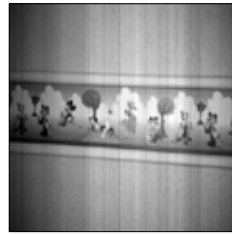
b



d



f



h

1.

- a.
- b.
- c.
- d.
- e.
- f.
- g.
- h.



a



b



c



d

2.

a.

b.

c.

d.



a



b



c

3.

a. Film cassette

b. Pediatric unit

c.



4.



5.

1.

---



---

Air conditioner

(9B 7.5/5.5)

Foot switch

---

	SD		2.12
13		3.85	”
“			1.87,
2.12,	3.12	3.75	.”
“			2.18,
2.62,	3.87	3.75,	”
.	”	2.12,	3.62, “
2.02,		”	2.37,
3.95	.”	3.87	.”

2.

(N=75)

	( )	(%)
8	10	13.3%
9	14	18.6%
10	12	16.0%
11	13	17.3%
12	11	14.6%
13	15	20.0%
	40	53.3%
	35	46.7%

IV.

3.75, “ ” 2.25, 2.52  
 2.37, “ ” 2.03,  
 3.95, “ ” , ,  
 2.21, 3.76, “ ,  
 ” 1.75,  
 3.98 .  
 13 .  
 2.16, 3.67  
 0.83 0.85 , , , , , , ,  
 , 가 ,  
 , , , 가  
 3  
 paired t-test , 가  
 12 가 ( <0.05), ,

3. SD (N=75)

SD					
1	2.12	0.77	3.12	0.85	<0.05
2	2.62	0.98	3.87	0.96	<0.05
3	2.02	0.79	3.95	0.93	<0.05
4	2.12	0.77	3.85	0.87	<0.05
5	1.87	0.82	3.75	0.79	<0.05
6	2.18	0.88	3.75	0.79	<0.05
7	2.12	0.77	3.62	0.75	<0.05
8	2.37	0.94	3.87	0.82	<0.05
9	2.25	0.75	3.75	0.79	<0.05
10	2.37	0.95	2.52	0.76	>0.05
11	2.03	0.79	3.95	0.94	<0.05
12	2.21	0.92	3.76	0.81	<0.05
13	1.75	0.68	3.98	0.94	<0.05
	2.16	0.83	3.67	0.85	



가

가

가 (2).

air conditioner

2 4% 가 가 (9)가

가 가

가 (10).

(5). 가

(11)

6 10% (11),

가 7

QC (12).

가 (6,7).

QC

(8), 가

가

modeling

(13).

brain-

storming

QA

(5),

, foot switch,

(14).

1. 가

(15).

1997;27(1):178-188

2.

1994;1(2):173-191

가

3.

1995;25(4):641-652

가가

4.

1996;29(1):1-14

가

5.

QA 1998;5(2):324-334

6. Russel D. Preventive Maintenance Quality Assurance. Journal of Clinical Engineering 1992; 17(4):321-325

가

7. Lavovitz GH. The total quality health care revolution. Quality Progress 1991;9:45-47

V.

8.

QI QA

가

1998;5(2):190-201

가

9.

1999;19:144-150

10. Birren F. Human response to color and light. 13. .  
Hospitals 1979;16:93-96 .
11. , . , 1998  
1999;19:76-82
12. , , , , , . 14. , , .  
3(1):378-93 QA 1996;  
1991;10(1):29-40 15. .  
1991;5(1):35-48