

## Contribution to the Staphylinid Fauna (Coleoptera, Staphylinidae) of Korea

Cho, Young Bok, German Sh. Lafer\*, Jong Cheol Paik\*\* and Jong Kyun Park\*\*\*

(Natural History Museum, Hannam University, Daejeon, 306-791, South Korea

\*Laboratory of Entomology, Institute of Biology and Pedology, Far East Branch,  
Russian Academy of Sciences, Vladivostok-22, 690022 Russia

\*\*Department of Agricultural Biology, College of Agriculture of National University of Suncheon, Suncheon, 540-742, Korea

\*\*\*Department of Sericulture &amp; Entomology Resources Sangju National University, Sangju, 742-71, Korea)

## 한국산 반날개류 (딱정벌레목, 반날개과)에 관한 조사

조영복 · German Sh. Lafer\* · 백종철\*\* · 박종균\*\*\*

(한남대학교 자연사박물관, \*Laboratory of Entomology, Institute of Biology and Pedology, Far East Branch,  
Russian Academy of Sciences, Russia, \*\*순천대학교 농생물학과, \*\*\*상주대학교 감사곤충자원학과)

## ABSTRACT

This paper deals with Korean Staphylinids fauna investigated in Korea by G. Lafer during 1994, 1995 and 1998. 38 species of rove beetles were recognized and among them, four species (*Atheta weisei*, *Bolitobius setiger*, *Lesteva plagiata*, and *Sepedophilus germanus*) are reported herein from Korea for the first time.

**Key words :** Staphylinidae, fauna, new records, Korea

## INTRODUCTION

The fauna of rove beetles in Korea is revealed yet insufficient, about 280 species was recorded hitherto (Cho et Ahn 2001). In this paper, an annotated list of rove beetles (Coleoptera : Staphylinidae) is given collected by G. Sh. Lafer during co-operative coleopterological investigations together with Drs. J.C. Paik and J.K. Park in 1994, 1995 and 1998 at some localities in the south of Korea : 1) Jeju Island; 2) the Suncheon University, Suncheon, and its vicinities including Mt. Jogyesan and Mt. Baekunsan; 3) vicinities of Daegu including Mt. Palgongsan and Mt. Bohyeonsan; 4) vicinity of Sangju University, Sangju.

Preliminary study including the investigation of male genitalia of almost species and the identification of the beetles were fulfilled by G. Sh. Lafer but then all species were checked and finally identified by Dr. Y.B. Cho.

As a result, 38 species of rove beetles were recognized. Among them, Four species (*Atheta weisei*, *Bolitobius setiger*, *Lesteva plagiata*, and *Sepedophilus germanus*) are reported herein from Korea for the first time and one species is undetermined. Studied specimens are deposited in Natural History

Museum, Hannam University, Korea.

## FAMILY STAPHYLINIDAE

## Aleocharinae

## Myrmedoniini

**1. *Atheta weisei* Bernhauer, 1907** 좁쌀바수염반날개  
(신칭) (Fig. 1)

*Atheta weisei* Bernhauer, 1907. Verh. zool.-bot. Ges. Wien, 57 : 408 (type-locality: Japan).

*Atheta weisei* : Shibata, 1985 : 319 [Hokkaido, Honshu], Pl. 56, fig. 20.

**Material.** About 100 ex. : Sangju University, Sangju, Gyeong-sangbuk-do, at ridge of hill, 200-250 m alt., forest of mainly *Pinus thunbergii*, *Alnus* spp. and *Quercus* spp. (several species), in lamellate mushrooms, 1. VIII 1998, G. Sh. Lafer leg. 1 ex. : the same place, in lamellate mushrooms, 9. VIII 1998, G. Sh. Lafer leg.

**Distribution.** Korea, Japan (Hokkaido, Honshu).

**Note.** This species is reported herein from the first time in

Korea. Up to now from Korea, six species of the genus *Atheta* were reported (Cho and Ahn 2001) : *A. atramentaria* (Gyllenhal), *A. japonica* Bernhauer, *A. koreana* Bernhauer, *A. transfuga* (Sharp), *A. Sordida* Marsham and *A. yokkaichiana* Bernhauer.

### Aleocharini

**2. *Aleochara curtula* (Goeze, 1777)** 홍딱지바수염반날개  
*Aleochara curtula* : Kim *et al.*, 1994 : 144. Ahn *et al.*, 2000 : 246. Cho et Ahn, 2001, 30 [Korea].

**Material.** 4 ex. : Mt. Palgongsan (20 km NE of Daegu), 23. VII 1994, G. Sh. Lafer leg.

**Distribution.** Holarctic species. In the Far East it is known from Amurskaya oblast', Khabarovskij Kray, Primorskij Kray; Japan (Hokkaido, Honshu, Shikoku), Korea, Japan, Europe, North America.

### Omaliinae Omaliini

**3. *Lesteva plagiata* Sharp, 1889** 줄가슴네 눈반날개 (신칭)  
(Fig. 3)  
*Lesteva plagiata* Sharp, 1889. Annl. Mag. nat. Hist., (6), 3 : 472 (orig. descr.). Watanabe, 1990 : 155 [Japan].

**Material.** 1 ♀ : Mt. Hallasan, 900 m alt., Jeju Is., 17. VII 1994, G. Sh. Lafer leg.

**Distribution.** Korea\*, Japan (Honshu, Kyushu).

**Notes.** This genus and species are reported herein from Korea for the first time.

### Oxytelinae Oxytelini

**4. *Thinodromus sericatus* (Sharp, 1889)** 굽은줄반날개  
*Thinodromus sericatus* : Watanabe, 1985 : 273 [Japan], Pl. 48, fig. 1. Kim *et al.*, 1994 : 140. Cho and Ahn, 2001 : 43 [Korea].  
*Trogophloeus* (*Thinodromus*) *sericatus* : Tikhomirova, 1973 : 144 [Japan].

**Material.** 1 ♂ : Mt. Hallasan, 900 m alt., Jeju Is., 17. VII 1994, G. Sh. Lafer leg.

**Distribution.** Korea, Japan (Honshu, Shikoku).

### 5. *Platysthetus operosus* Sharp, 1874

 강변반날개

*Platysthetus operosus* : Watanabe, 1985 : 273 [Japan], Pl. 48, fig. 7. Kim *et al.*, 1994 : 140. Cho and Ahn, 2001 : 43 [Korea].  
*Platysthetus* (*Platysthetus*) *operosus* : Tikhomirova, 1973 : 146 [Japan].

**Material.** 1 ♂ : Mt. Hanlasan, 900 m alt., Jeju Is., 17. VII 1994, G. Sh. Lafer leg. 1 ex. : Donnaeko, 300 m alt., Jeju Is., 17. VII 1994, G. Sh. Lafer leg. 1 ex. : Biostation of the Sangju University, Sangju, Gyeongsangbuk-do, at foot of a hill, on wet soil at mulberry plantation, 9. VIII 1998, G. Sh. Lafer leg.

**Distribution.** Korea, Japan (Hokkaido, Honshu).

### Paederinae Pinophilini

**6. *Pinophilus lewisius* Sharp, 1874** 수중다리반날개  
*Pinophilus lewisius* : Jacobson, 1909 : 485 [Japan]. Adachi, 1955 : 13, 1957 : 190. Shibata, 1977 : 17. Watanabe, 1985 : 281 [Honshu, Kyushu, Jaku; Taiwan], Pl. 49, fig. 24. Cho, 2000b : 66-67 [Korea, Japan, Taiwan].

**Material.** 1 ♂ : Suncheon University, at light, 10. VII 1998, G. Sh. Lafer leg.

**Distribution.** Korea, Japan (Honshu, Kyushu, Jaku), Taiwan.

**Notes.** This species was identified by the data of Watanabe, 1985 and Cho, 2000b. Two species, *Pinophilus lewisius* Sharp and *P. rufipennis* are known from Korea up to now (Cho 2000b).

### Paederini

**7. *Astenus porosus* (Sharp, 1889)** 검은곰보개미반날개  
*Sunius porosus* Sharp, 1889 : 322 (orig. descr.).  
*Astenus porosus* : Jacobson, 1909 : 489 [Japan]. Bernhauer et Schubert, 1912 : 218. Adachi, 1955 : 19, 1957 : 12. Shibata, 1977 : 36. Watanabe, 1985 : 282 [Honshu], Pl. 49, fig. 32. Cho, 2000a : 121, 123-124 [Korea : Central, South, Chejudo].

**Material.** 1 ex. : Biostation of the Sangju University, Sangju, Gyeongsangbuk-do, bank of river, 3 m from water, on clay soil among thick and tall grasses and *Salix* bushes, 9. VIII 1998, G. Sh. Lafer leg.

**Distribution.** Korea, Japan (Honshu).

Contribution to Korean Staphylinidae

8. *Paederus fuscipes* Curtis, 1823 청딱지개미반날개

*Paederus fuscipes* : Watanabe, 1985 : 282 [Hokkaido, Honshu, Shikoku, Kyushu, Jaku, Ryukyu etc.], Pl. 49, fig. 28.

*Paederus (Heteropaederus) fuscipes* : Kim *et al.*, 1994 : 141. Cho et Ahn, 2001 : 48 [Korea].

**Material.** 1 ♂ : Suo-Daem (9 km SE of Mt. Baekunsan), Jeonlanam-do, bank of waterbody, 8. VII 1995, G. Lafer leg. 1 ♂ : Biostation of the Sangju Univerity, Sangju, Gyeongsangbuk-do, boggy bank of river, 3 m from water, on clay soil

among thick and tall grasses and *Salix* bushes, 1. VIII 1998 G. Sh. Lafer leg.; 1 ♀ : the same place, 9. VIII 1998, G. Sh Lafer leg.

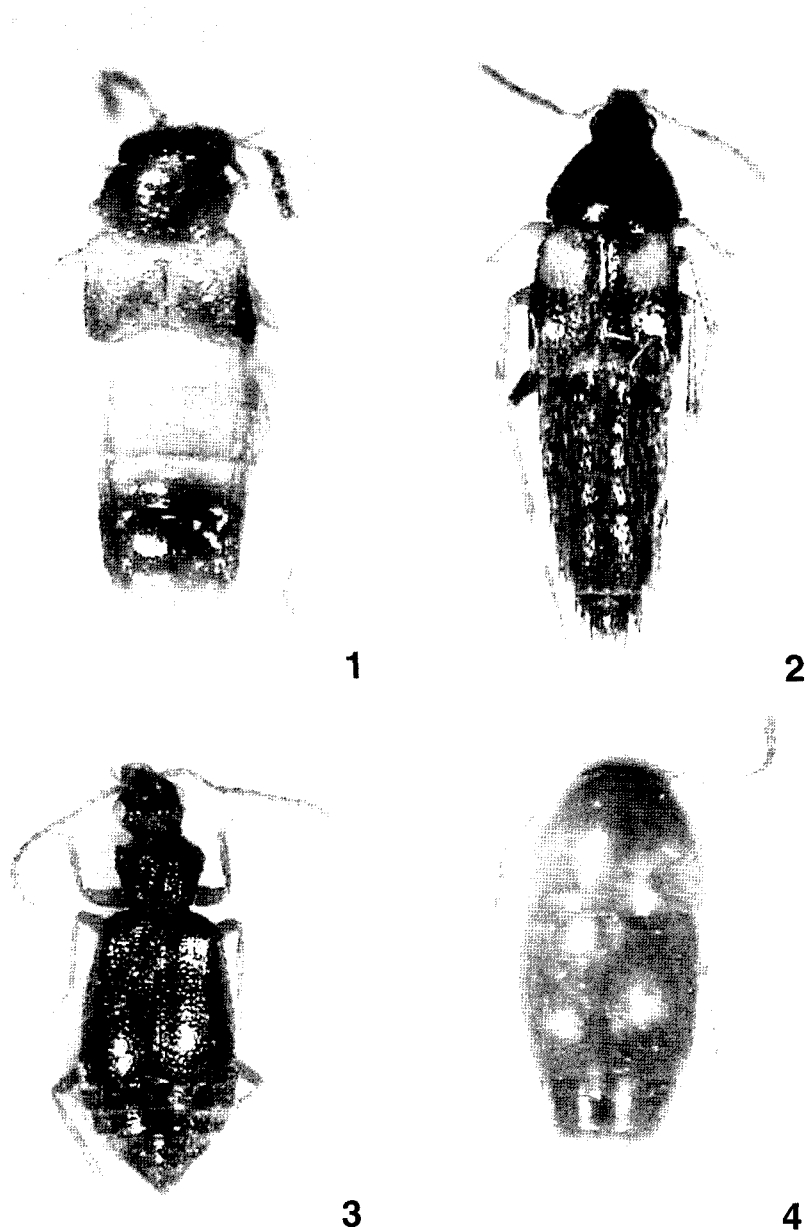
**Distribution.** Korea, Japan (throughout), China, Cosmopolitan except America.

9. *Rugilus rufescens* (Sharp, 1874) 가는목반날개

*Stilicus rufescens* Sharp, 1874 : 61 (orig. descr.).

*Stilicus rufescens* : Jacobson, 1909 : 490 [Japan].

*Rugilus rufescens* : Watanabe, 1985 : 285 [Hokkaido, Honshu



Figs. 1-4. Habitus : 1. *Atheta weisei*; 2. *Bolitobius setiger*; 3. *Lesteva plagiata*; 4. *Sepedophilus germanus*.

Shikoku, Kyushu, Tsushima, Jaku; Korea, Eastern Siberia etc.], Pl. 50, fig. 7. Kim *et al.*, 1994 : 141. Cho et Ahn, 2001 : 49 [Korea].

**Material.** 1 ex. : Sangju Univerity, Sangju, Gyeongsangbuk-do, at ridge of hill, 200-250 m alt., forest of mainly *Pinus thunbergii*, *Alnus* spp. and *Querus* spp. (several species), in lamellate mushrooms, 9. VIII 1998, G. Sh. Lafer leg.

**Distribution.** Korea, Russia (Primorskij Kray), Japan (throughout), China, Southern and South-Eastern Asia.

#### 10. *Lathrobium coreanum* Watanabe, 2000

좁막지긴개미반날개 (신칭)

*Lathrobium coreanum* Watanabe, 2000 : 323 [Korea]. (orig. descr.).

**Material.** 1 ♂, 1 ♀ : Mt. Jogyesan, vicinity of Songgwangsa Temple, Jeonlanam-do, 10. VII 1994, G. Sh. Lafer leg. 2 ♂ : Mt. Jogyesan, vicinity of Songgwangsa Temple, Jeonlanam-do, edges of forest, 9. VII 1995, G. Sh. Lafer leg. 1 ♀ : the same place, Mt. Jogyesan, 700 m. alt., under stons and lumps of soil in dryed drains, 9. VII 1995, G. Sh. Lafer leg. 1 ♀ : Mt. Hallasan, Jejudo, 900 m alt., in a gutter along road, 17. VII 1994, G. Sh. Lafer leg.

**Distribution.** Korea.

#### 11. *Domene curtipennis* Sharp, 1889

검붉은딱지왕개미반날개

*Domene curtipennis* Sharp, 1889 : 261 (orig. descr.).

*Domene curtipennis* : Adachi, 1955 : 28. Shibata, 1977 : 62 [Japan]. Cho et Ahn, 2001 : 45 [Korea].

**Material.** 1 ♀ : Mt. Hanlasan, Jejudo, 1250 m alt. under stones along mountain stream, 16. VII 1994, G. Sh. Lafer leg. 1 ♂, 1 ♀ : Mt. Hanlasan, 900 m alt., in a gutter along road, 17. VII 1994, G. Sh. Lafer leg.

**Distribution.** Korea, South of Khabarovskij Kray, Primorskij Kray.

### Proteininae

#### Proteinini

#### 12. *Megarthus hemipterus* Illiger, 1974 큰넓적반날개

*Megarthus hemipterus* Illiger, 1974 : 597 (orig. descr.).

*Megarthus heterops* K. Sawada, 1962 [Japan] : Tikhomirova, 1973 : 136 [Japan] : Watanabe, 1985 : 264 [Japan], Pl. 46, fig. 21. Kim *et al.*, 1994 : 139. Cho and Ahn, 2001 : 51

[Korea].

**Material.** 1 ex. : Sangju University, Sangju, Gyeongsangbuk-do, at ridge of hill, forest of mainly *Pinus thunbergii*, *Alnus* spp. and *Querus* spp. (several species), in lamellate mushrooms, 9. VIII 1998, G. Sh. Lafer leg.

**Distribution.** Korea, Russia, Japan, China, Europe.

**Notes.** Two species, *M. heterops* K. Sawada (= *M. hemipterus*) (Kim *et al.* 1994) and *M. japonicus* Sharp (Paik 1986, List from Jejudo 1995) were recorded hitherto from Korea.

### Staphylininae

#### Philonthini

#### 13. *Bisnius parvus* Sharp, 1874 작은좁반날개

*Philonthus parvus* Sharp, 1874 : 40 (orig. descr.).

*Philonthus* (*Philonthus*, sect. *Gefyrobis*) *parvus* : Jacobson, 1909 : 506 [Japan].

*Philonthus parvus* : Tikhomirova, 1973 : 183 [Japan]. Shibata, 1985 : 292 [Hokkaido, Honshu; Mongolia, Europe etc.], Pl. 51, fig. 24, text-fig. 28A (aedeagus).

*Philonthus* (*Philonthus*) *parvus* : Kim *et al.*, 1994 : 142 [Korea].

**Material.** 1 ♀ : Mt. Jogyesan, vicinity of Songgwangsa Temple, Jeonlanam-do, 10. VII 1994, G. Sh. Lafer.

**Distribution.** Transpalaeart. In the Far East this species is known only from Korea, Japan (Hokkaido, Honshu), and China.

#### 14. *Neobisnius pumilus* (Sharp, 1874) 홍딱지호리반날개

*Neobisnius pumilus* : Jacobson, 1909 : 503 [Japan]. Tikhomirova, 1973 : 182 [Korea, Japan]. Shibata, 1985 : 290-291 [Hokkaido, Honshu, Sado, Kyushu, Tsushima], Pl. 51, fig. 15. Cho et Ahn, 2001 : 70 [Korea].

**Material.** 1 ex. : Sangju University, Sangju, Gyeongsangbuk-do, at ridge of hill, 200-250 m alt., forest of mainly *Pinus Thunbergii*, *Alnus* spp. and *Querus* spp. (several species), in lamellate mushrooms, 1. VIII 1998, G. Sh. Lafer leg.

**Distribution.** Korea, Japan (almost throughout).

#### 15. *Philonthus rectangulus* Sharp, 1874 모난좁반날개

*Philonthus rectangulus* Sharp, 1874, 42 (orig. descr.).

*Philonthus rectangulus* : Kryzhanovskij *et al.*, 1973 : 149 [Primorskij Kray, Palearctica]. Shibata, 1985 : 294 [Hokkaido, Honshu, Sado, Kyushu, Tsushima, Jaku, Ryukyu; China, Taiwan; Europe, North America], Pl. 51, fig. 30, text-fig.

30A (aedeagus). Cho et Ahn, 2001 : 78 [Korea].

*Philonthus (Philonthus) rectangulus* : Tikhomirova, 1973 : 183 [Holarctic Reg., South America]. Kim *et al.*, 1994 : 142 [Korea].

**Material.** 4 ♂♂, 3 ♀♀ : Mt. Gabjongsan, Sangju, Gyeong-sangbuk-do, in the valley of mountain stream, 100-200 m alt., at light screen, 3. VIII 1998, G. Sh. Lafer leg. 1 ♀ : Biostan-tion of Sangju University, at light near bank river, 11. VIII 1998, G. Sh. Lafer leg.

**Distribution.** Holarctic species. In the Far East it is known from Korea, Pimorskij Kray (Russia) and Japan (throughout).

**16. *Philonthus tardus* Kraatz, 1859** 붉은테좁반날개

*Philonthus tardus* Kraatz, 1859 : 84 (orig. descr.).  
*Philonthus tardus* : Kim *et al.*, 1994 : 142. Cho et Ahn, 2001 : 80 [Korea].  
*Philonthus solidus* : Shibata, 1985 : 297 [Honshu, Sado, Shi-koku, Kyushu, Tsushima, Jaku; China], Pl. 52, fig. 2.

**Material.** 2 ♀♀ : Mt. Jogyesan, vicinity of Songgwangsa Temple, Jeonlanam-do, 10. VII 1994, G. Sh. Lafer.

**Distribution.** Korea, Japan (Honshu, Sado, Shikoku, Kyu-shu, Tsushima, Jaku), China, Taiwan, Sri Lanka, East India.

**17. *Philonthus sericans* Sharp, 1874** 비단좁반날개

*Philonthus sericans* : Shibata, 1985 : 297 [Honshu, Shikoku, Kyushu, Jaku], Pl. 52, fig. 4, text-fig. 31B (aedeagus). Cho et Ahn, 2001 : 79 [Korea].  
*Philonthus (Philonthus) sericans* : Kim *et al.*, 1994 : 142 [Korea].

**Material.** 1 ♂ : Suncheon University, Jeonlanam-do, in just dried pool, 8. VII 1994, G. Sh. Lafer. 1 ♂ : Mt. Jogyesan, vicinity of Songgwangsa Temple, Jeonlanam-do, 10. VII 1994, G. Sh. Lafer.

**Distribution.** Korea, Japan (Honshu, Shikoku, Kyushu, Jaku), China.

**18. *Philonthus spadiceus* Sharp, 1889** 긴빨좁반날개

*Philonthus spadiceus* : Shibata, 1985 : 298 [Japan]. Kim *et al.*, 1994 : 142. Cho et Ahn, 2001 : 79 [Korea].

**Material.** 1 ♂, 3 ♀♀ : Mt. Hanlasan, 900 m alt., Jejudo Is., 17. VII 1994, G. Sh. Lafer leg.

**Distribution.** Korea, Japan (Hokkaido, Honshu).

**19. *Philonthus havelkai* Dvorák, 1958** 길쪽좁반날개

*Philonthus havelkai* Dvorák, 1958 : 140 (orig. descr.).  
*Philonthus (Philonthus) havelkai* : Shibata, 1983 : 103 [Japan]. Kim *et al.*, 1994 : 142 [Korea].  
*Philonthus havelkai* : Cho et Ahn, 2001 : 76 [Korea].

**Material.** 1 ♂ : Cheongsogol (10 km N of Suncheon), Jeon-lanam-do, 15. VII 1995, G. Lafer leg. 2G : Suncheon Univer-sity, Jeonlanam-do, on light, 19. VII 1998, G. Sh. Lafer. 1G : Suncheon University, on light, 26. VII 1998, G. Sh. Lafer.

**Distribution.** Korea, Japan.

**20. *Philonthus numata* Dvorák, 1958** 호리좁반날개

*Philonthus numata* Dvorák, 1958 : 139 (orig. descr.).  
*Philonthus numata* : Cho, 1999 : 207. Cho et Ahn, 2001 : 78 [Korea].  
*Philonthus (Philonthus) numata* : Shibata, 1983 : 111 [Japan].

**Material.** 1 ♂ : Suncheon University, Jeonlanam-do, 7. VIII 1994, G. Sh. Lafer.

**Distribution.** Korea, Japan, China.

**21. *Gabrius unzennensis* (Bernhauer, 1939)**

봉홀쪽좁반날개

*Philonthus (Gabrius) unzennensis* Bernhauer, 1939 : 153 (orig. descr.).  
*Philonthus (Gabrius) unzennensis* : Adachi, 1957 : 183 [Japan].  
*Gabrius unzennensis* : Cho et Lee, 1997 : 272 [Korea].

**Material.** 1 ♂ : Mt. Hallasan, 900 m alt., 17. VII 1994, G. Sh. Lafer leg.

**Distribution.** Korea, Japan (Honshu, Kyushu), China.

**Notes.** Up to now 4 species of this genus from Korea are reported by Cho & Ahn (2001).

**Staphylinini**

**22. *Platydracus brevicornis* (Motschulsky, 1860)**

홍딱지반날개

*Staphylinus brevicornis* Motschulsky, 1860 : 11 (orig. descr.).  
*Staphylinus paganus* Sharp, 1874 : 30. Shibata, 1984 : 85 [Japan].  
*Platydracus paganus* : Adachi, 1957 : 181 [Japan]. Kim *et al.*, 1994 : 143 [Korea]  
*Platydracus brevicornis* : Cho et Ahn, 2001 : 81 [Korea].

**Material.** 1 ♂, 1 ♀ : Mt. Bibong, near ridge of Suncheon

University, Jeonlanam-do, mixed forest, in bait trap, 5. VII 1994, G. Sh. Lafer.

**Distribution.** Korea, Russia, Japan, China.

### 23. *Platydracus* sp.

**Material.** 2 ex. : Mt. Bohyeonsan, Gyeongsangbuk-do, broad-leaved forest at slope, in traps, 25. VII 1994, G. Sh. Lafer leg.

### 24. *Ocypus weisei* Harold, 1877 노랑털검정반날개

*Ocypus weisei* : Shibata, 1985 : 302 [Hokkaido, Honshu, Shikoku, Kyushu, Tsushima], Pl. 53, fig. 7. Cho et Ahn, 2001 : 72 [Korea].

*Ocypus (Xanthocypus) weisei* : Tikhomirova, 1973 : 186 [Japan]. Kim *et al.*, 1994 : 143 [Korea].

**Material.** 1 ex. : Mt. Hallasan, Jeju-do, 900 m, in a gutter along road, 17. VII 1994, G. Lafer leg.

**Distribution.** Korea, Japan (throughout), China.

### 25. *Ontholestes gracilis* (Sharp, 1874) 녹슬은반날개

*Leistrotrophus gracilis* Sharp, 1874 : 28 (orig. descr.).

*Ontholestes gracilis* : Jacobson, 1909 : 514 [Japan, ?Yuzhno-Ussur. Reg.]. Kirscheblat, 1936 : 522 [Yuzhno-Ussuriyskij Kray, Japan], 554. Kryzhanovskij *et al.*, 1973 : 150 [Primorskij Kray, Japan]. Tikhomirova, 1973 : 187. Shibata, 1985 : Hokkaido, Honshu, Sado, Oki, Shikoku, Kyushu], Pl. 53, fig. 9. Kim *et al.*, 1994 : 143. Cho et Ahn, 2001 : 73 [Korea].

**Material.** 1 ♀ : Mt. Jogyesan, vicinity of Songgwangsa Temple, Jeonlanam-do, edges of forest, 9. VII 1995, G. Sh. Lafer.

**Distribution.** Korea, Russia (Primorskij Kray), Japan (throughout), China.

**Notes.** This species was identified with Kirscheblat's key and by comparing with specimens in Filatova's collection. Five species are known from Primorskij Kray, one species from Korea and three species from Japan (Kirscheblat 1936, Jacobson 1909, Tikhomirova 1973).

### 26. *Creophillus maxillosus* (Linnaeus, 1758) 황반날개

*Staphylinus maxillosus* Linnaeus, 1758 : 421 (orig. descr.).

Type loc. : Europe.

*Creophillus maxillosus* : Jacobson, 1909 : 514, Pl. 14, fig. 10. Kryzhanovskij *et al.*, 1973 : 150 [Primorskij Kray, Holarctic,

South Asia]. Tikhomirova, 1973 : 188 [Holarctic, South Asia]. Shibata, 1985 : 304 [Hokkaido, Honshu, Shikoku, Kyushu, Jaku], Pl. 53, fig. 19. Naomi, 1988 : 129-131 [Hokkaido, Honshu, Shikoku, Kyushu, Amami Is., Ishigaki Is., Iriomote Is., Yonagumi Is.; Palaearctic Reg.]. Kim *et al.*, 1994 : 142. Cho et Ahn, 2001 : 66 [Korea].

**Material.** 1 ♂ : Undong Villiage, 7 km S of Mt. Baekunsan, Jeonlanam-do, bank of river, under stones, 8. VII 1995, G. Sh. Lafer leg.

**Distribution.** Holarctic Region, South Asia. In the Far East this species is known from Amurskaya oblast', Khabarovskij Kray, Primorskij Kray (ssp. *ciliaris* Stephens), Kamchatka, Kuril Islands (ssp. *arcticus* Er.), Korea, Japan (throughout) and China.

**Notes.** Monotypic genus (Jacobson 1909 : 514) containing a single species *Creophillus maxillosus* (Linnaeus 1758) with some subspecies.

### 27. *Algon grandicollis* Sharp, 1874 가슴반날개

*Algon grandicollis* Sharp, 1874 : 23 (orig. descr.).

*Algon grandicollis* : Jacobson, 1909 : 515 [Japan]. Tikhomirova, 1973 : 188 [China, Japan]. Naomi, 1983 : 589-591 [Hokkaido, Honshu, Shikoku, Kyushu; China]. Shibata, 1985 : 307 [Hokkaido, Honshu, Sado, Shikoku, Kyushu, Tsushima, Jaku; China], Pl. 53, fig. 7. Kim *et al.*, 1994 : 143. Cho et Ahn, 2001 : 65 [Korea].

**Material.** 1 ♂ : Suncheon University, Jeonlanam-do, open slope of Mt. Bibong, 50 m alt., in drain gutter, 5. VII 1998, G. Lafer leg.

**Distribution.** Korea, Russia (Kuril Islands (Kunashir)), Japan (throughout), China.

## Steninae

### 28. *Stenus cicindeloides* (Schaller, 1883)

북쪽알락딱부리반날개

*Stenus cicindeloides* : Kryzhanovskij *et al.*, 1973 : 147 [Primorskij Kray, Palearctic]. Puthz, 1979 : 122 [North Korea : Tesson, 35 km SW Pyeogyang]. Watanabe, 1985 : 279 [Honshu, Shikoku, Kyushu; China etc.], Pl. 49, fig. 14.

*Stenus (Hypostenus) cicindeloides* : Naomi, 1990 : 201 [Key]. Kim *et al.*, 1994 : 140. Cho et Ahn, 2001 : 86 [Korea].

**Material.** 2 ♀ : Biostation of the Sangju University, Sangju, Gyeongsangbuk-do, boggy bank of river, 3 m from water, on

clay soil among thick and tall grasses and *Salix* bushes, 9. VIII 1998, G. Sh. Lafer leg.

**Distribution.** Palaearctic and Oreintal region. In the Far East this species is known from Primorskij Kray (Russia), Korea, Japan (Honshu, Shikoku, Kyushu), China.

**Notes.** About 90 species of this genus are known from Russian Far East and about 150 species from Japan but only 27 species are reported up to now from Korea (Kim *et al.* 1994, Insect of Quelpart Island 1995).

**29. *Stenus melanarius* Stephens, 1832** 줄딱부리반날개

*Stenus melanarius* ssp. *verecundus* : Kryzhanovskij *et al.*, 1973 : 148 [Primorskij Kray, Japan, Palearctic].

*Stenus melanarius* : Watanabe, 1985 : 279 [Honshu], Pl. 49, fig. 12.

*Stenus (Nestus) melanarius* : Naomi, 1989 : 41 [Key], fig 1E [aedeagus]. Kim *et al.*, 1994 : 140 [Korea].

**Material.** 1 ♀ : Biostation of the Sangju Univerity, Sangju, Gyeongsangbuk-do, boggy bank of river, 3 m from water, on clay soil among thick and tall grasses and *Salix* bushes, 1. VIII 1998, G. Sh. Lafer leg.

**Distribution.** Palaearctic Region. In the Far East this species is represented by ssp. *verecundus* Sharp, 1874 and is known from Primorskij Kray (Russia), Japan (Honshu, Shikoku, Kyushu), Korea, China.

**30. *Stenus puberulus* Sharp, 1874** 자란딱부리반날개

*Stenus puberulus* Sharp, 1874 : 83 (orig. descr.).

*Stenus (Nestus) puberulus* : Jacobson, 1908 [Japan]. Naomi, 1989 : 41 [Key], fig. 1D [aedeagus]. Kim *et al.*, 1994 : 140 [Korea].

**Material.** 1 ♂ : Biostation of the Sangju Univerity, Sangju, Gyeongsangbuk-do, boggy bank of river, 3 m from water, on clay soil among thick and tall grasses and *Salix* bushes, 1. VIII 1998, G. Sh. Lafer leg.

**Distribution.** Korea, Russia (Primorskij Kray), Japan (Hokkaido, Honshu, Shikoku, Kyushu), China.

**31. *Stenus distans* Sharp, 1889** 검은무릎딱부리반날개

*Stenus distans* Sharp, 1889 : 327 (orig. descr.).

*Stenus (Stenus) distans* : Jacobson, 1908 : 480 [Japan]. Puthz, 1974 : 437, fig. 2 (aedeagus). Watanabe, 1985 : 278-279 [Honshu, Shikoku, Kyushu], Pl. 49, fig. 10. Naomi, 1988 : 66 [key]. Kim *et al.*, 1994 : 141 [Korea].

*Stenus (Stenus) ? lentus* Sharp : Ryvkin, 1989 : 9 [manuscript;

Japan, Korea, China].

**Material.** 1 ♂, 1 ♀ : Biostation of the Sangju Univerity, Sangju, Gyeongsangbuk-do, boggy bank of river, 3 m from water, on clay soil among thick and tall grasses and *Salix* bushes, 9. VIII 1998, G. Sh. Lafer leg.

**Distribution.** Korea, Russia (Khabarovskij Kray, Primorskij Kray), Japan (Honshu, Shikoku, Kyushu).

**32. *Stenus pilosiventris* Bernhauer, 1915**

털배딱부리반날개

*Stenus (Tesusus) pilosiventris* : Puthz, 1979 : 121 [North Korea]. Kim *et al.*, 1994 : 141 [Korea].

**Material.** 1 ex. : Biostation of the Sangju Univerity, Sangju, Gyeongsangbuk-do, South Korea, boggy bank of river, 3 m from water, on clay soil among thick and tall grasses and *Salix* bushes, 1. VIII 1998, G. Sh. Lafer leg. 1 ex. : the same place, 9. VIII 1998, G. Sh. Lafer leg.

**Distribution.** Korea, Russia (Khabarovskij Kray, Primorskij Kray), North-Eastern China.

**Tachyporinae**  
**Bolitobiini**

**33. *Bolitobius setiger* (Sharp, 1874)** 어깨무늬뽕족반날개 (신칭) (Fig. 2)

*Bryocharis setigera* : Jacobson, 1909 : 523 [Japan]. Tikhomi-rova, 1973 : 149 [Japan].

*Bolitobius setiger* : Shibata, 1985 : 312 [Hokkaido, Honshu, Kyushu], Pl. 55, fig. 13.

**Material.** 1 ex. : Sangju Unuversity, Sangju, Gyeongsangbuk-do, at ridge of hill, forest of mainly *Pinus thunbergii*, *Alnus* spp. and *Quercus* spp. (several species), in lamellate mushrooms, 9. VIII 1998, G. Sh. Lafer leg.

**Distribution.** Korea, Japan (Hokkaido, Honshu, Kyushu), China.

**Notes.** This genus and species are reported herein from Korea for the first time.

**34. *Lordithon simplex* (Sharp, 1888)** 버섯반날개

*Lordithon simplex* : Adachi, 1957 : 178 [Japan]. Kim *et al.*, 1994 : 143. Cho and Ahn, 2001 : 92 [Korea].

**Material.** 2 ex. : Sangju Unuversity, Sangju, Gyeongsangbuk-do, at ridge of hill, forest of mainly *Pinus Thunbergii*,

*Alnus* spp. and *Querus* ssp. (several species), in lamellate mushrooms, 9. VIII 1998, G. Sh. Lafer leg.

**Distribution.** Korea, Japan (Honshu, Kyushu). China.

**Notes.** Two species of this genus, *L. bicolor* Grav. and *L. simplex* (Sharp) were recorded hitherto from Korea.

### Tachyporini

#### 35. *Sepedophilus germanus* (Sharp, 1874)

갈색알뽕족반날개 (신칭) (Fig. 4)

*Sepedophilus germanus* Sharp, 1874 : 17 (orig. descr.).

*Conosoma germanus* : Jacobson, 1909 : 524 [Japan].

*Conosoma germanus* : Kryzhanovskij *et al.*, 1973 : 147 [Primorskij Kray, Japan]. Tikhomirova, 1973 : 149 [Far East, Japan].

*Sepedophilus germanus* : Shibata, 1985 : 313 [Hokkaido, Honshu, Kyushu, Tsushima, Jaku], Pl. 55, fig. 20.

**Material.** 1 ex. : Mt. Bohyeonsan, Gyeongsangbuk-do, 25. VII 1994, G. Sh. Lafer leg.

**Distribution.** Korea\*, Primorskij Kray, Japan (almost throughout).

**Notes.** This species is reported herein from Korea for the first time. This genus contains about 330 species; 10 species are known from Primorskij Kray, about 20 species from Japan and 8 species were reported hitherto from Korea (Kim et Ahn 2000a).

#### 36. *Sepedophilus varicornis* (Sharp, 1888)

붉은어깨알뽕족반날개

*Conosoma varicorne* : Watanabe, 1961 : 354 [Japan].

*Sepedophilus varicornis* : Kim et Ahn, 2000a : 261. Cho et Ahn, 2001 : 94 [Korea].

**Material.** 1 ex. : Mt. Hanlasan, 1250 m alt., Jeju-do Is., along mountain stream, 16. VII 1994, G. Sh. Lafer leg.

**Distribution.** Korea, Japan, China.

#### 37. *Tachinus nigriceps* Sharp, 1888 꼬마뽕족반날개

*Tachinus nigriceps* Sharp, 1888 : 384 (orig. descr.).

*Tachinus nigriceps* : Jacobson, 1909 : 526 [Japan]. Shibata, 1985 : 314 [Hokkaido, Honshu, Kyushu, Tsushima, Jaku], Pl. 55, fig. 35. Kim et Ahn, 2000b : 127. Cho et Ahn, 2001 : 95 [Korea].

*Tachinus nigrinus* (? sic) : Tikhomirova, 1973 : 150 [Japan].

**Material.** 1 ♂ : Mt. Jogyesan, vicinity of Songgwangsa

Temple, Jeonlanam-do, edges of forest, 9. VII 1994, G. Sh. Lafer. 1 ex. : Mt. Jogyesan, vicinity of Songgwangsa Temple, Jeonlanam-do, 10. VII 1994, G. Sh. Lafer.

**Distribution.** Korea, Japan (Hokkaido, Honshu, Kyushu, Tsushima, Jaku).

**Notes.** Twelve species was reported earlier from Russian Far East, 14 species from Japan and 5 species from Korea by Kim et Ahn, 2000b.

### Deropsini

#### 38. *Derops coreanus* (Watanabe, 1969) 굴수염반날개

*Derops coreanus* Watanabe, 1969 : 627 (orig. descr.).

*Derops coreanus* : Kim *et al.*, 1994 : 139. Cho et Ahn, 2001 : 92 [Korea].

**Material.** 1 ex. : Mt. Palgongsan, 23. VII 1994, G. Sh. Lafer leg. 1 ex. : Mt. Bohyeonsan, 25. VII 1994, G. Lafer leg.

**Distribution.** Korea, Japan, China.

**Notes.** Four species are known from Far East : two in Japan, one in Korea and one in Primorskij Kray.

### 적 요

G. Lafer에 의해 조사된 한국산 반날개류에 대한 조사 내용을 보고한다. 조사된 반날개류는 38종이 동정되었고, 이들 중 4종이 (*Atheta weisei*, *Bolitobius setiger*, *Lesteva plagiata*, and *Sepedophilus germanus*) 한국산 미기록종으로 밝혀졌다.

### REFERENCES

- Adachi, T. 1955. Systematic study on the subfamily Paederinae of Staphylinidae of Japan (Eleventh Contribution to the knowledge of Staphylinidae of Japan). *J. Toyo Univ.* 7 : 1-36.
- Adachi, T. 1957. The staphylinid fauna of Japan. *J. Toyo Univ.* 11 : 1-35.
- Ahn, K.J., M.J. Jeon and H.J. Kim. 2000. New records of intertidal *Aleochara* Gravenhorst species and key to the species in Korea (Coleoptera, Staphylinidae, Aleocharinae). *Korean J. Entomology* 30(4) : 243-247.
- Bernhauer, M. and K. Schubert. 1912. Staphylinidae III.-In Junk & Schenkling, Coleoperorum Catalogus, pars 40. Berlin : 191-288.
- Bernhauer, M. and K. Schubert. 1914. Staphylinidae. IV.-In Junk & Schenkling, Coleoperorum Catalogus, pars 57. Berlin : 289-408.
- Cho, P.S. 1963. Insects of Quelpart Island (Cheju-do). *Bull. Hum. & Nat. Sci, Korea Univ.* 6 : 159-242 (In Korean).
- Cho, Y.B. 1999. Four species of genus *Philonthus* Stephens from Korea (Insecta, Coleoptera, Staphylinidae). *Korean J. of Envir. Biology* 17(2) : 205-208.



## Contribution to Korean Staphylinidae

- Cho, Y.B. 2000a. Taxonomic review of the subtribe Asteninae (Coleoptera, Staphylinidae) from Korea. *Korean J. of Envir. Biology* **18**(1) : 121-124.
- Cho, Y.B. 2000b. A Taxonomic study of the tribe Pinophilini (Coleoptera, Staphylinidae) in Korea. *The Korean J. of systematic Zoology* **6**(1) : 65-68.
- Cho, Y.B. and K.J. Ahn. 1999. A review of the subfamily Osoriinae (Coleoptera, Staphylinidae) in Korea. *The Korean J. of systematic Zoology* **15**(2) : 175-181.
- Cho, Y.B. and K.J. Ahn. 2001. Coleoptera (Silphidae, Staphylinidae). Economic insects of Korea 11. *Insecta Koreana suppl.* **18** : 167.
- ESK & KSAE (The Entomological Society of Korea & the Korean Society of Applied Entomology), 1994. Order 23. Coleoptera.-In : Check List of Insects from Korea. Kon-kuk Univ. Press., Seoul. pp. 117-214.
- Filatova, L.D. 1978. Occurrence of the rove beetle of the genus *Osorius* Latr (Coleoptera, Staphylinidae) in the south of Far East with description of a new subspecies. *Entomol. obozr.* **58**(3) : 568-569 (In Russian).
- Filatova, L.D. and G. Sh. Lafer. 1978. Contribution to the Staphylinid fauna (Coleoptera, Staphylinidae) of Iturup Islands. Aktual'nye Voprosy Okhrany Prirody na Dal'nem Vostoke Vladivostok : 148-153 (In Russian).
- Filatova, L.D. 1981. New species of Staphylinidae (Coleoptera) from southern Far East. *Entomol. obozr.* **60**(1) : 119-121 (In Russian).
- Filatova, L.D. 1981. Contribution to the fauna of subfamily Oxytelinae (Coleoptera, Staphylinidae) from Primorskij Krai with description of a new species.-Morphologia i systematika nasekomykh Dal'nego Vostoka. Trudy Zool. institute AN USSR, Vol. 92. Leningrad : 17-19. (In Russian).
- Gusarov, V.I. 1992. New and little-known palaeartic Staphylinids (Coleoptera, Staphylinidae). 4. *Vestnik S-Petersburg Gos. Univ.* Ser 3, **1**(3) : 11-25 (In Russian).
- Insect of quelpart Island. 1995. Chejudo Folklore and Natural History Museum. pp. 375-379.
- Jacobson, G.G. 1905-1915. The Beetles of Russia, West Europe and Adjacent Countries. St.-Peterbourg : Devrien. 1024 p., 83 Pls.
- Kim, H.J. and K.J. Ahn. 2000a. The Korean species of the genus *Sepedophilus* Gistel (Coleoptera : Staphylinidae : Tachyporinae). *Ins. Koreana* **17** : 251-264.
- Kim, H.J. and K.J. Ahn. 2000b. A taxonomic review of the genus *Tachinus* Gravenhorst in Korea (Insecta : Coleoptera : Staphylinidae). *Korean J. Environ. Biol.* **18**(1) : 125-131.
- Kim, J.I., Y.J. Kwon, J.C. Paik, S.M. Lee, S.L. Ahn, H.C. Park and H.Y. Chu. 1994. Order 23. Coleoptera. -In : Check List of Insects from Korea. (The Entomological Society of Korea & Korean Society of Applied Entomology, Ed.) Kon-kuk Univ. Press., Seoul. 117-214.
- Kim, W.T. and H.S. Oh. 1990. Faunistic study of Insect of the inhabited islets near coast of Cheju Islands.-Report on the academic survey of the inhabited islets of the Cheju Island, pp. 94-134. Munhwa Broadcasting Co & Cheju-Do (In Korean).
- Kirschenblat, Ya.D. 1936. Revue of Palaeartic species of the genus *Ontholestes* Ganglb (Coleoptera, Staphylinidae). *Trans. Zool. Inst. Acad. Sci. SSSR, III.* Leningrad : 551-566 (In Russian).
- Kryzhanovskij, O.L., A.L. Tikhomirova and L.D. Filatova. 1973. The rove beetles (Coleoptera, Staphylinidae) of southern Primorie. *Ecologie pochvemykh bespozvonochnykh* Moscow : 144-173 (In Russian).
- Matsumura, S. 1931. 6000 illustrated insects of Japan Empire. 1497+191 pp (In Japanese).
- Murayama, J. 1938. Recherches sur les Insects ches la Terre des *P. pini* res ans la Core. *Bull. Forest Exp. Sta.* **29** : 1-86 (In Japanese).
- Nakane, T. 1963. Staphylinidae. In Nakane T. *et al.*, Icon. Ins. Japon. col. nat. **2** : 81-100.
- Naomi, S. 1986. Taxonomic study on the subfamily Osoriinae (Coleoptera, Oxytelidae) from Japan. I. *Elytra Tokyo* **14**(2) : 33-42.
- Naomi, S. 1987. Taxonomic study on the subfamily Osoriinae (Coleoptera, Oxytelidae) from Japan. II. *Elytra Tokyo* **15**(1/2) : 12-18.
- Naomi, S. 1988. Studies on the Subfamily Steninae from Japan. IV. New or little known species of the Subgenus *Stenus* s. str. of the Genus *Stenus* Latreille (Coleoptera, Oxyporidae). *Trans. Shikoku Ent. Soc.* **19**(1/2) : 55-62.
- Naomi, S. 1989. Study on the Subfamily Steninae (Coleoptera, Oxyporidae) from Japan. V. Subgenus *Tesnus* of the Genus *Stenus* Latreille, with a Key to the Species of the Subgenera *Tesnus* and *Nestus*. *Proc. Jpn. Soc. syst. Zool.* **N 39** : 37-42.
- Naomi, S. 1990. Study on the Subfamily Steninae (Coleoptera, Oxyporidae) from Japan. XV. Subgenus *Hypostenus* of the Genus *Stenus* Latreille, Part 7. *Elytra Tokyo* **18**(2) : 197-207.
- Naomi, S. 1996a. Taxonomic study on the Subfamily Osoriinae (Coleoptera, Staphylinidae) from Japan. VI. *Nat. Hist. Res.* **4**(1) : 49-55.
- Naomi, S. 1996b. Revision of the genera *Lispinus* Erichson and *Neolosus* Blackwelder (Coleoptera, Staphylinidae) from Japan. *Jpn. J. Ent.* **64**(4) : 762-771.
- Naom, S. 1997. A Revision of the Genus *Nacaues* Blackwelder (Coleoptera, Staphylinidae) from Japan. *Jpn. J. Ent.* **65**(1) : 127-142.
- Newton, A.F. 1990. Insecta : Coleoptera, Staphylinidae, Adult and Larvae (Chapter 38). In Dindal D.L. (ed.), Soil biology guide. John Wiley & Sons, New York : 1137-1174.
- Occidentale IV. Suppl. la Nouv. Rev. Ent. , 12(4). Toulouse. 440 pp.
- Paik, W.H. 1986. Staphylinidae of Quelpart Island. *Corentomon* **2**(1) : 2-11 (In Korean).
- Puthz, V. 1968a. On some East Palearctic Steni, particularly from Japan (Coleoptera, Staphylinidae). *Ent. Rev. Japan* **20** : 41-51.
- Puthz, V. 1968b. Die *Stenus*- und *Megalopinus*-Arten Motschulskys und Bemerkungen das Subgenus *Tesnus* Rey, mit einer Tabelle der palarktischen Vertreter (Coleoptera, Staphylinidae). *Notul. ent.* **48** : 197-219.
- Puthz, V. 1974. Weitere *Stenus*-Arten von Korea (Coleoptera : Staphylinidae). *Ann. Hist. nat. Mus. Nat. Hung.* **66** : 159-162.
- Puthz, V. 1979. Weitere *Stenus*-Arten von Korea (Coleoptera : Staphylinidae). *Folia Ent. Hung.* (Ser. nova), **32**(1) : 121-122.
- Ryvkin, A.B. 1987. Six new species of *Stenus* Latreille 1796 in the N-Paleartic, with notes on *Stenus sibiricus* Sahlberg 1880 (Insecta : Coleoptera : Staphylinidae). *Senkenb. biol.* (1986) : 263-275. (In Russian).
- Ryvkin, A.B. 1987. New species of staphylinids (Coleoptera, Staphylinidae) from Siberia and Far East. *Ent. Obozr.* **66**(1) : 123-128 (In Russian).
- Sawada, K. 1965. New species of Staphylinidae, mainly from Mt. Jonei the Japan Alps, (1). *Ent. Rev. Japan* **18**(1) : 11-18.
- Seok, D.M. 1970. The insect fauna of the Is. Quelpart. 186 pp. Po-Chin-Chai (In Korean).
- Sharp, D. 1874. The Staphylinidae of Japan. *Trans. ent. Soc. Lond.* : 1-103.
- Sharp, D. 1888. The Staphylinidae of Japan. *Ann. Mag. Nat. Hist.* (ser. 6) : 277-377.
- Sharp, D. 1889. The Staphylinidae of Japan. *Ann. Mag. Nat. Hist.* (ser. 6) **3** : 319-334.
- Scheerpeltz, O. 1933. Staphylinidae. VII.-In Junk & Schenckling, Coleopterorum Catalogus, Vol. 6, pars 129. Berlin.
- Shibata, Y. 1976. Provisional check list of the family Staphylinidae of

- Japan. I. (Insecta : Coleoptera). *Ann. Bull. Nichidai Sanko Tokyo* **19** : 77-212.
- Shibata, Y. 1977. Provisional check list of the family Staphylinidae of Japan. II (Insecta : Coleoptera). *Ann. Bull. Nichidai Sanko Tokyo* **20** : 16-83.
- Shibata Y. 1983. Provisional check list of the family Staphylinidae of Japan. III. (Insecta : Coleoptera). *Ann. Bull. Nichidai Sanko Tokyo* **21** : 67-140.
- Shibata, Y. 1985. Staphylinidae (Xantholininae, Staphylininae, Tachyporinae, Aleocharinae).-In : S.-I. Ueno, Y. Kurosawa et M. Sato (eds.) The Coleoptera of Japan in Color. Osaka. 2 : 289-321, Pls. 51-56. (In Japanese).
- Tikhomirova, A.L. 1973. Morphological peculiarities and phylogenese of rove beetles (with a check list of fauna of USSR). Moscow. 192 p. (In Russian).
- Tikhomirova, A.L. 1976. New species of rove beetles of the genus *Lathrobium* Grav. (Coleoptera, Staphylinidae) from fauna of USSR. *Entomol. obozr.* **55**(3) : 610-619.
- Yuh, J.H., W.A. Paik and Y.J. Kwon. 1985. Check list of rove beetles of Korea (Coleoptera, Staphylinidae). *Insecta Koreana* **5** : 223-255.
- Watanabe, Y. 1985. Staphylinidae.-In : S.-I. Ueno, Y. Kurosawa et M. Sato (eds.) The Coleoptera of Japan in Color. *Osaka* **2** : 261-289, Pls. 46-50 (In Japanese).
- Watanabe, Y. 1990. A taxonomic study on the subfamily Omaliinae from Japan (Coleoptera, Staphylinidae). *Memoirs of the Tokyo University of Agriculture*.
- Watanabe, Y. 2000. A new species of the group of *Lathrobium monticola* (Coleoptera, Staphylinidae) from South Korea. *Elytra Japan* **28**(2) : 323-326.