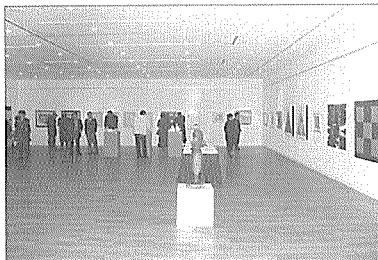


전시회

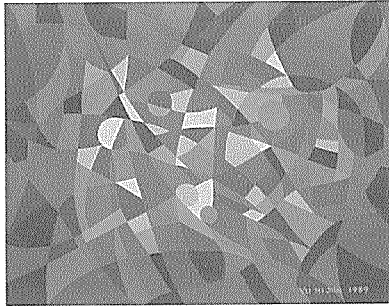
제10회 건축가미술전 2001

The 10th Art Exhibition by Architects

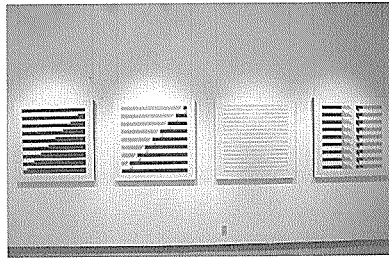
기간 : 2001. 12. 3~12. 11
 장소 : 대한건축사협회 Architect's
 Gallery



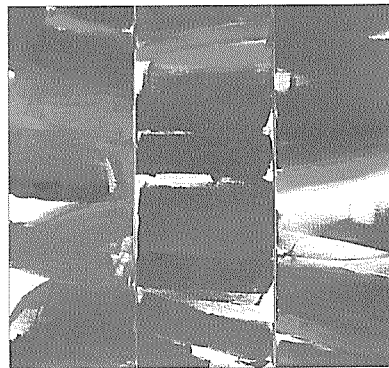
전시회 광경



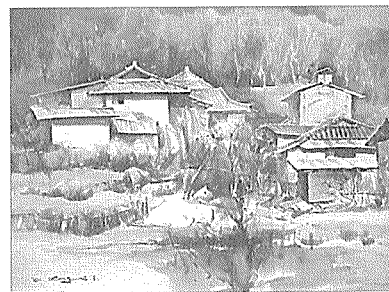
유희준 | PAINTING(for peace of mind) |
 Acrylic on canvas | 32×41cm | 1989



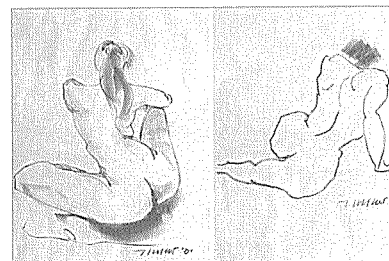
조성렬 | 유비증 그래픽 | 그래픽 | 2001



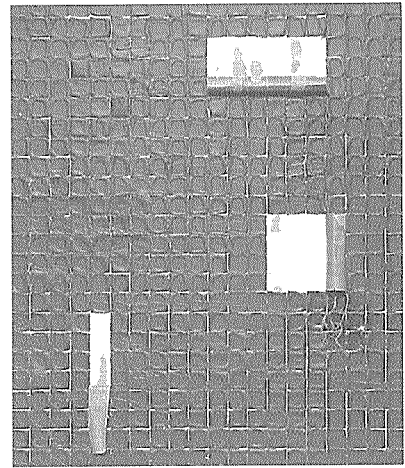
손석진 | Touch Five | Acrylic | 90×90cm | 2001



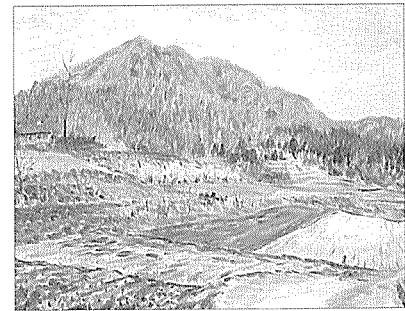
강성익 | 수채화 | 72×53cm | 2001



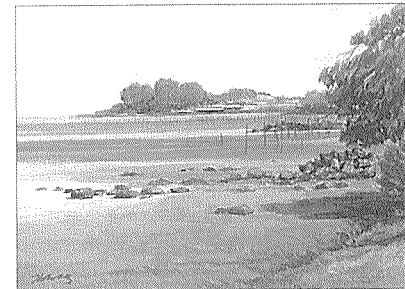
김낙동 | 크로키 | 59.4×42cm | 2001



김낙중 | AURA의 해체-Ⅱ | paper and acrylic |
 60×70cm | 2001



김석환 | 대지의 불기운 | 유화 | 2001



김용집 | 모항갯벌 | 수채화 | 53×40.9cm | 2001



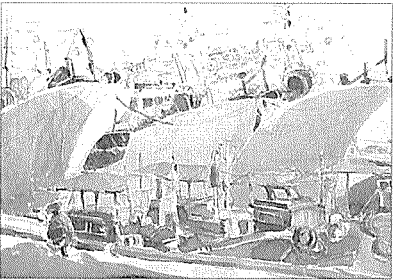
김재열 | 항구 | 수채화 | 20호 | 2001



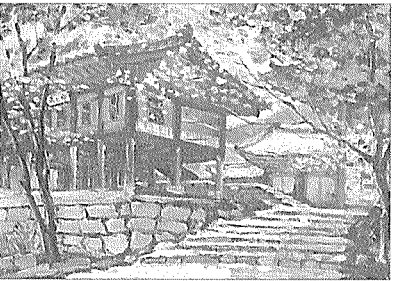
김호경 | Human's Relation III | 수채화 | 75×50cm | 2001



이상은 | 백령도 해변 | 12F | 2001



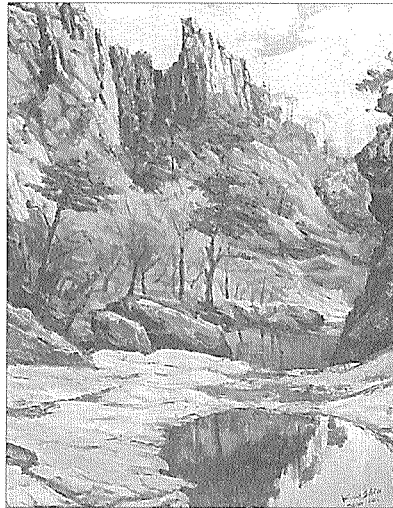
이관직 | 주문진향 | 수채화 | 49.5×34cm | 2001



이기범 | 回歸(佛岩寺 入口에서) | 유화 | 53.5×45.7cm | 2001



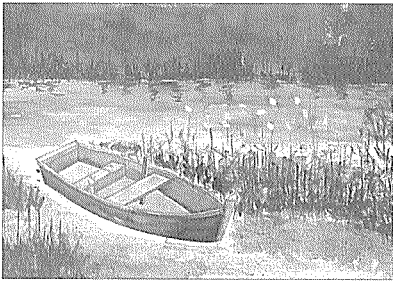
최영권 | 치악산의 가을 | 수채화 | 12F | 2001



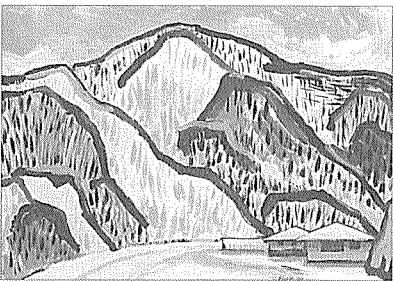
신길웅 | 단풍계곡 | 서양화 | 10P | 2001



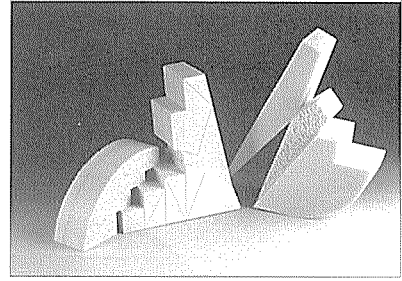
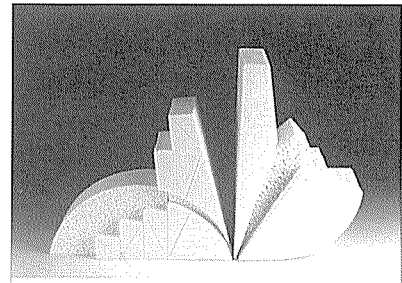
김용환 | 밀정사의 미소 | 수채화 | 74×54cm | 2001



이원희 | 구월 | 수채화 | 2001



함정도 | 겨울산 | 서양화 | 60×42cm | 2001



이호진 | 건축과 도예 | 1300℃ 환원소성, 백자 | 580×100×350cm | 2001



이호진 | 건축과 도예 | 1300℃ 환원소성, 백자 | 580×100×350cm | 2001



최종문 | 문경할매 | 서양화 | 40F | 2001