

2

- -

. . . .

0.2 ~ 2%

1.9%

2

1

38

2

가

2

2

:

, 2

dysplasia)
 ma)

(nonossifying fibro-
 ma)

38

2

가

1

20%

0.2 ~ 2%

^{2,6,7)}

38

1

2

Mayo Clinic Unn³⁾

1.9%

20

가

(fibrous

,

10

:

1

Tel : 02) 958-8364, Fax : 02) 964-3865, E-mail : cshan29@netsgo.com



Fig. 1. Preoperative radiograph showed large trabeculated and lobulated intraosseous lesion in proximal phalanx of the second toe. The cortical penetrating lesion was seen.



Fig. 3. Mass resection and autogenous bone graft using rib was done and K-wires were fixed.



Fig. 2-A,B. Whole body bone scan showed apparent increased uptake in proximal phalanx of the second toe.

— : 2 —

2 가

(atypia) (spindle cell)
(collagen fibrous stroma) (Fig. 4-A,B).

1 × 1.5cm

2 (Fig. 5).

(Fig. 1).

가 , 1

(Fig. 2-A,B).

K- 50%

(Fig. 3).

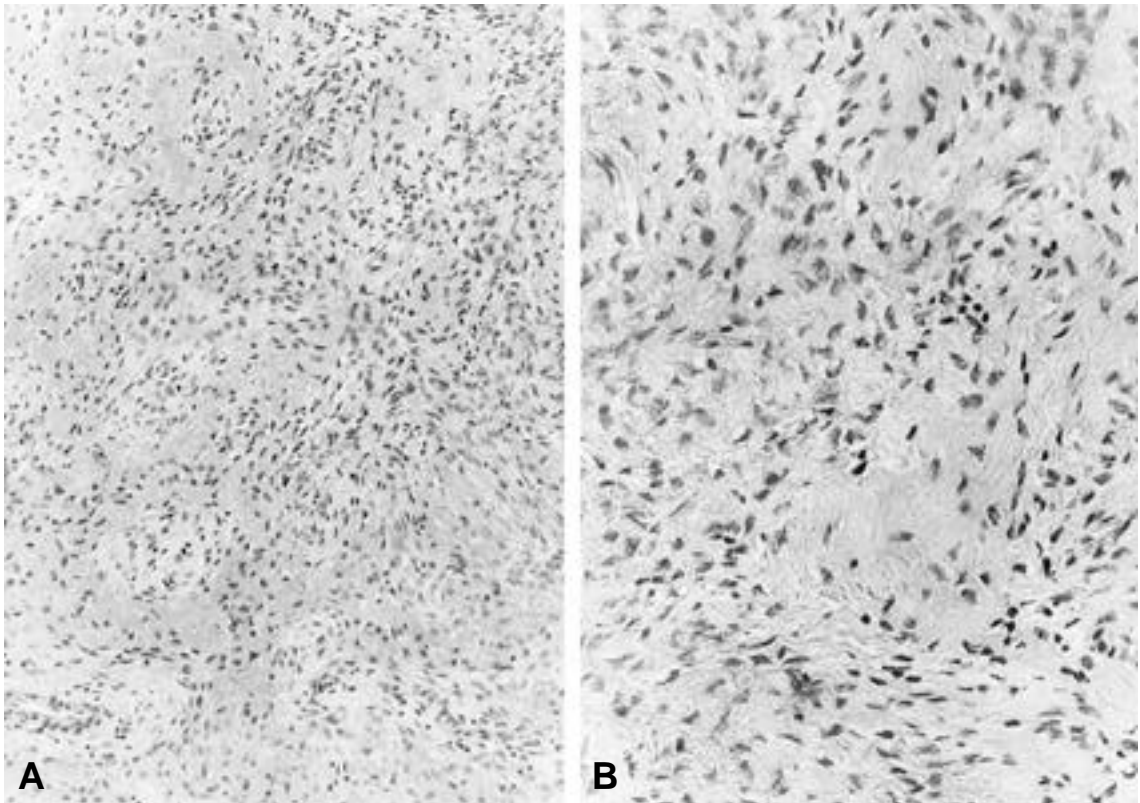


Fig. 4-A. Pathologic finding shows bundles of spindle cells arranged in an interlacing pattern (Hematoxyline & Eosin stain × 100).

B. Spindle cells with indistinct cytoplasm borders embedded in loose fibrous stroma have a few irregular shaped atypical nuclei and occasional mitotic figures (Hematoxyline & Eosin stain × 400).



Fig. 5. Second postoperative radiograph shows wide resection state in proximal phalanx of the second toe.

Unni¹⁾ Dahlin²⁾

1.9%

가

1,8)

가

8)

가

(hyperchromic)

가

(storiform)

가

가

20%

4). Unni⁶⁾

Choong³⁾

Wu⁷⁾

0.2 ~ 2%

. Choong³⁾

, Unni⁶⁾

52

1

Biscaglia²⁾

10

2

20 ~ 30

가

3)

1

38

5)

2

1

가

1

REFERENCES

- 1) **Bertoni F, Bacchini P, Fabbri N, Mercuri M and Picci P** : Osteosarcoma. Low-grade intraosseous type osteosarcoma, histologically resembling parosteal osteosarcoma, fibrous dysplasia, and desmoplastic fibroma. *Cancer*, 71:338-345, 1993.
- 2) **Biscaglia R, Gasbarrini A, Bohling T, Bacchini P, Bertoni F and Picci P** : Osteosarcoma of the bones of the foot: an easily misdiagnosed malignant tumor. *Mayo Clin Proc*, 73:842-847, 1998.
- 3) **Choong FM, Qureshi, AA, Sim FH and Unni KK** : Osteosarcoma of the foot: a review of 52 patients at the Mayo Clinic. *Acta Orthop Scand*, 70(4):361-364, 1999.
- 4) **Dahlin DC and Unni KK** : Bone tumors. 4th ed. Springfield, *Thomas*, 1986.
- 5) **Kurt AM and Unni KK** : Low-grade intraosseous osteosarcoma. *Cancer*, 65:1418-1428, 1990.
- 6) **Unni KK** : Osteosarcoma in Dahlin's bone tumors. Lippincott-Raven, *Philadelphia*, 143-84, 1996.
- 7) **Wu KK** : Osteogenic sarcoma of the tarsal navicular bone. *J Foot Surg*, 28:363-369, 1989.
- 8) **YK Park, MH Yang, WS Choi and YJ Lim** : Well differentiated, low grade osteosarcoma of the clivus. *Skeletal Radiol*, 24:386-388, 1995.

Abstract

**Low Grade Osteosarcoma in Proximal Phalanx of the Second Toe
- A Case Report-**

**Chung Soo Han, M.D., Duck Hwan Chung, M.D., Dong Jun Shin, M.D.,
Yang Sun Lim, M.D., Chan Jong Jung, M.D.**

Department of Orthopaedic Surgery, School of Medicine, Kyung Hee University, Seoul, Korea

The reported incidence of osteosarcoma of the foot varies between 0.2-2% of all osteosarcoma. Low grade osteosarcoma of the long bone represents only 1.9% of all osteosarcoma. A 38-year-old female had suffered painful mass in the proximal phalanx of the second toe for 1 year. Radiographic finding showed enlarged osteolytic mass which had penetrated thin cortex of the second toe and apparent increased uptake in bone scan was seen. Mass resection with autogenous bone graft using rib was performed. Histologically, the tumor was compatible with "low grade osteosarcoma". Second stage wide resection was performed. Because low grade osteosarcoma located in the proximal phalanx of the second toe is very rare, we report this unusual case with review of literature.

Key Words : Low grade osteosarcoma, Proxiaml phalanx of the second toe

Address reprint requests to

Chung Soo Han, M.D.

Department of Orthopaedic Surgery, School of Medicine, Kyung Hee University

#1 Hoegi-dong, Dongdaemun-gu, Seoul, Korea

Tel : 82-2-958-8364, Fax : 82-2-964-3865, E-mail : cshan29@netsgo.com