

# (Korea Enhanced Observing Period : KEOP)

1.

가 80km  
 (Korea  
 Enhanced Observing Period) (KEOP-2001  
 ) 2001 9 23 10 6  
 KEOP- 2001 KEOP-2001  
 AWS 403.5MHz  
 404.5MHz

2. KEOP

2.1

10 PC

Fig. 1

GPS



Fig. 1

2.2

PC

Fig. 1. Observational principles of Aerosonde

GPS

가 가

. Fig. 2

KEOP- 2001 가

가

PC

2.3

KEOP-2001 8 110

, 2001 9 27 19

125.5

31.5

4

300m

5000m

. 2001 9 30 19

300m

5000m

10 3

. 2001

가

125.5 , 31.5

가

. 2001 10 5 6

2001 9 27

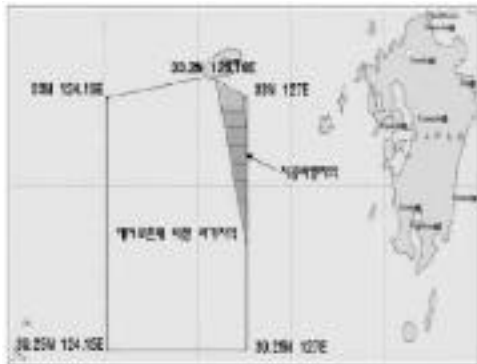


Fig. 2. The admitted area for aerosonde flight during the KEOP-2001.



Fig. 3. Surface Analysis Chart at 12UTC on Sep. 27 2001

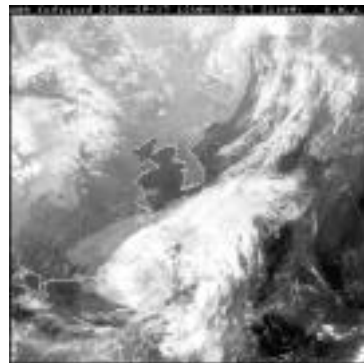


Fig. 4. GMS IR image at 12UTC on Sep. 27 2001

Fig.3

19

, KEOP-2001

Fig.4

GMS  
가

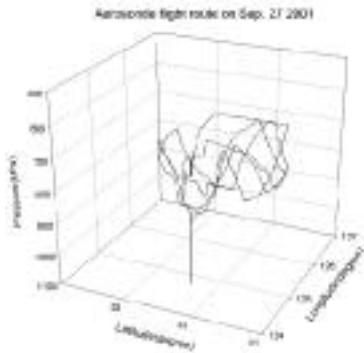


Fig. 5. The flight route of the Sep. 27th aviation

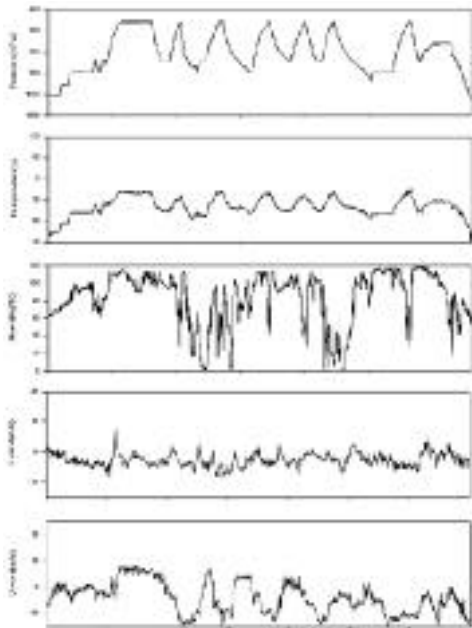


Fig. 6. The time series of pressure, temperature, humidity, north-south wind and east-west wind of the aerosonde observation from 05UTC Sep. 27 2001 to 02UTC Sep. 28 2001

Fig.5

Fig.6

가

가

3.

2001

(KEOP-2001)  
(target)

Nagazawa

( : 02-834-5920, choch@metri.re.kr)